



In cooperation with the
Naval Air Station Patuxent River

Hydrogeology and Ground-Water Quality of the Piney Point-Nanjemoy and Aquia Aquifers, Naval Air Station Patuxent River and Webster Outlying Field, St. Marys County, Maryland

Water-Resources Investigations Report 01-4029



U.S. Department of the Interior
U.S. Geological Survey

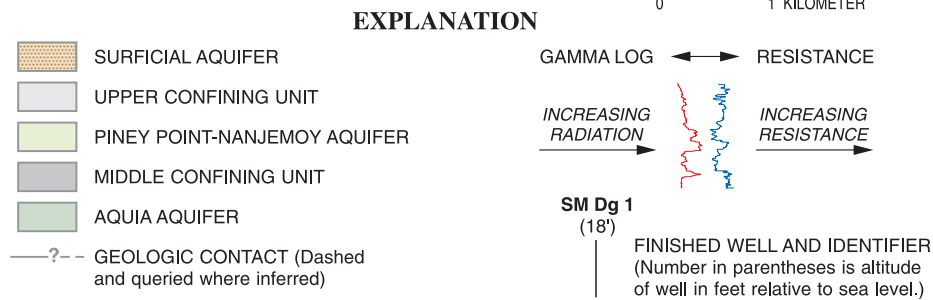
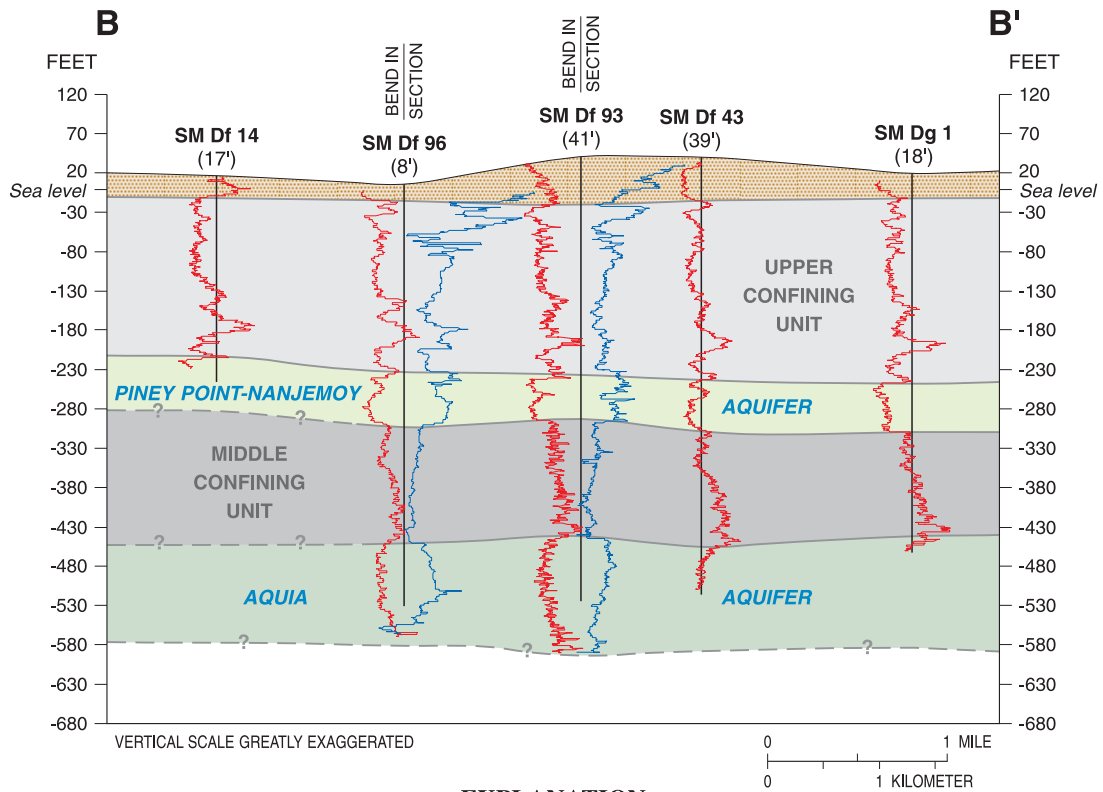
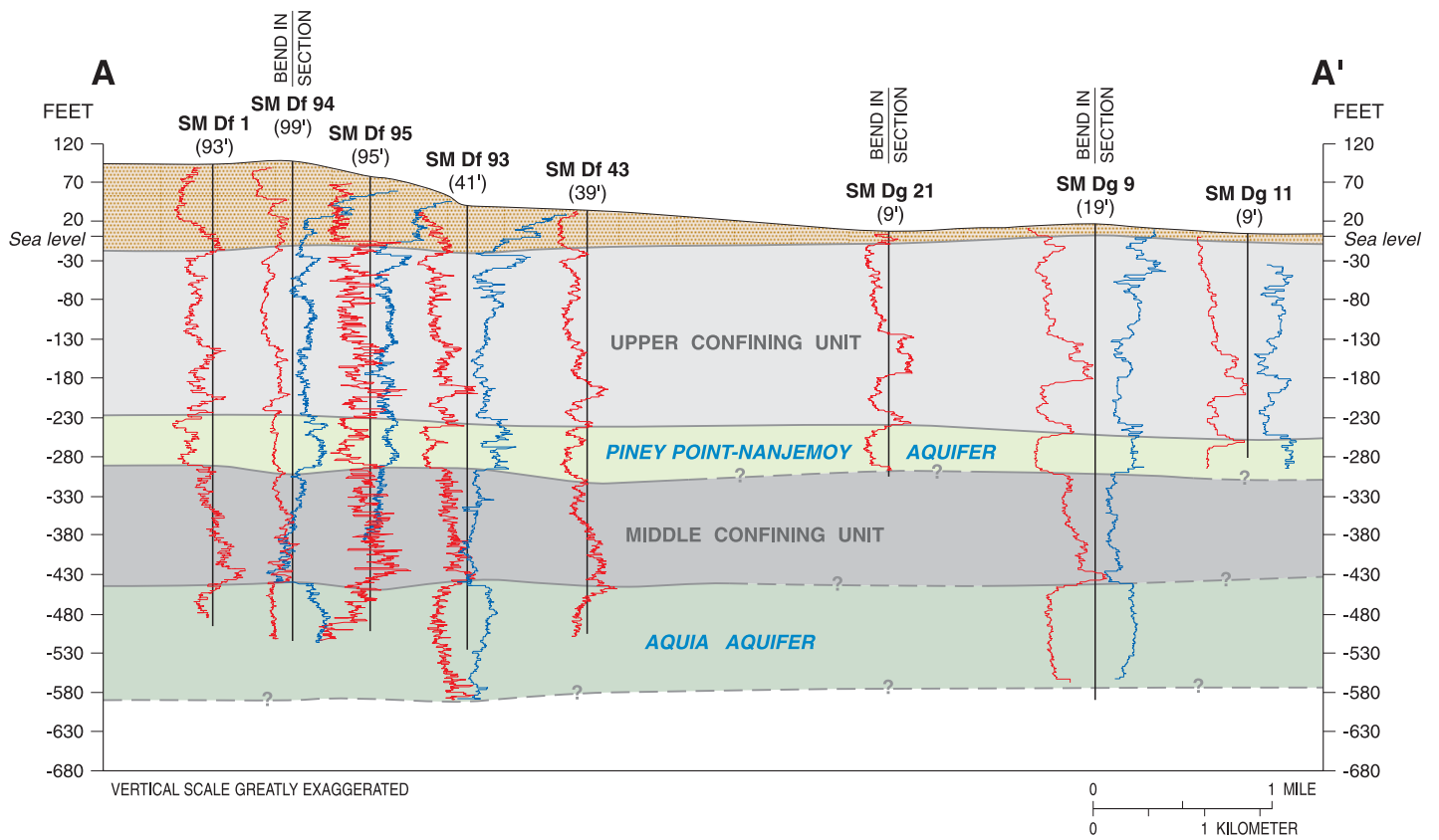


Figure 6. Hydrogeologic sections A-A' and B-B' at Naval Air Station Patuxent River, Maryland.