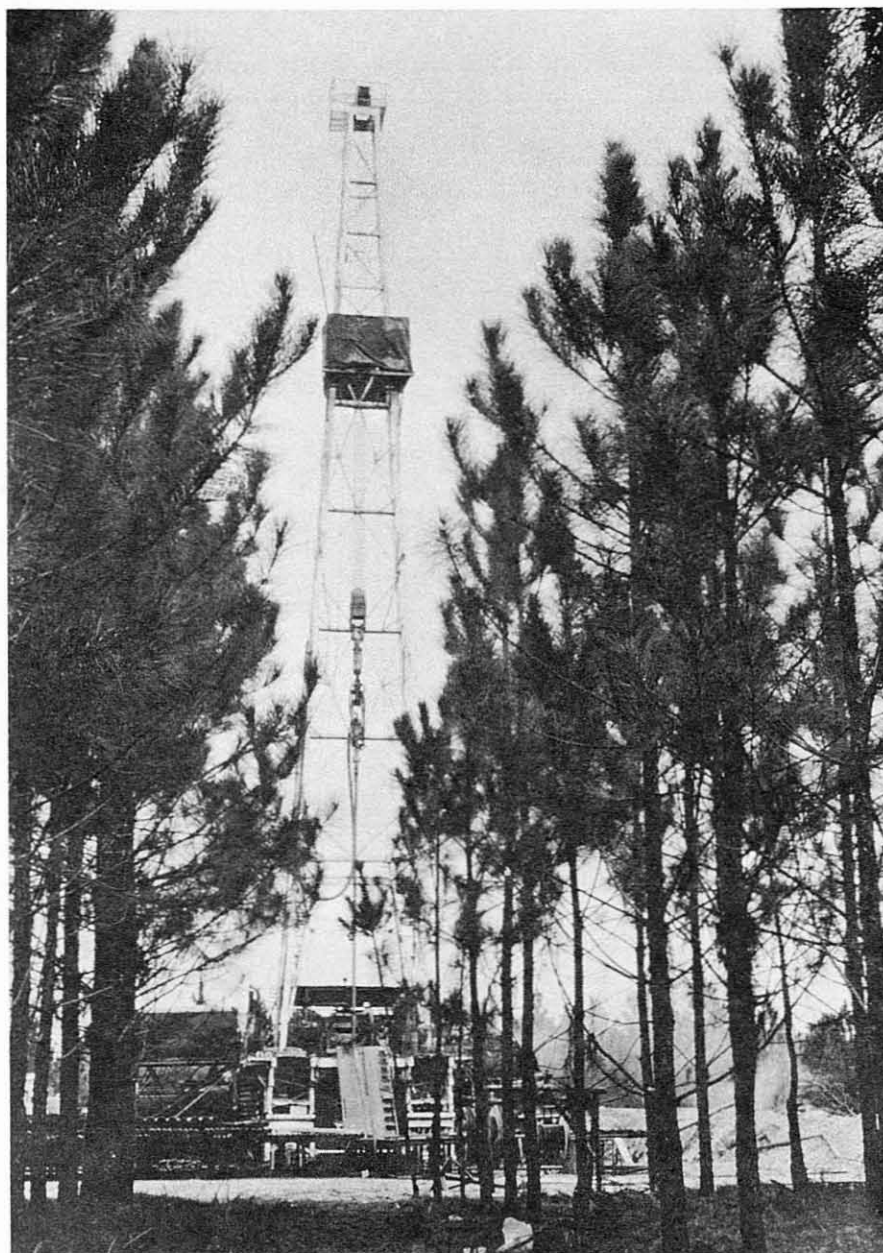


# PETROLEUM EXPLORATION IN GEORGIA

Compiled by William E. Marsalis



THE GEOLOGICAL SURVEY OF GEORGIA  
DEPARTMENT OF MINES, MINING AND GEOLOGY  
JESSE H. AUVIL JR., DIRECTOR

ATLANTA      NOVEMBER 1970

Remarks: I. E. S. log, Baroid log (lithologic and drilling rate) and samples 90-3200 ft.

#### TREUTLEN COUNTY

Operator: F. W. McCain and John Becsi  
Landowner: James Gillis No. 1  
Location: 1.5 mi. N. of Soperton, Ga. and  
330 ft. E. of Hwy. 221; GMD 1386

G.G.S. No. D.P. No. 75  
Elevation: 358 ft. G.L.  
Total Depth: 3100 ft.  
Completed: 1967

#### TWIGGS COUNTY

Operator: R. O Haubelt and W.W. Walke  
Landowner: Cline B. Patrick No. 1  
Location: 330 ft. S.E. of public rd. and 330 ft.  
N.W. of S.W. line of L.L. 16, L.D. 27,  
"Hammock" GMD 1322

G.G.S. No. D.P. No. 59  
Elevation:  
Total Depth: 300 ft.  
Completed: 1960

#### WALKER COUNTY

Operator: T. P. Posey  
Landowner: Vernon Close No. 1  
Location: 225 ft. E. and 660 ft. S. of N.W.  
corner of L.L. 5, L.D. 7

G.G.S. No. 382 D.P. No. 28  
Elevation: 870 ft. G. L.  
Total Depth: 1925 ft.  
Completed: August 11, 1953

Description	Depth
Mississippian (Fort Payne Ch.)	0- 160
No samples	160- 185
In Devonian (Chattanooga Sh.)	185- 235
Silurian	235-1040
Ordovician (Maysville-Trenton Ls.)	1040-1925

Remarks: Samples 10-1920 ft. Formational tops by Vaux Owen Jr.

#### WALKER COUNTY

Operator: H. L. Chapman  
Landowner: J. H. Fitzpatrick No. 1  
Location: 330 ft. S. and 330 ft. E. of N.W.  
corner of L.L. 251, L.D. 26

G.G.S. No. 344 D.P. No. 29  
Elevation: 900 ft. D.F.  
Total Depth: 2064 ft.  
Completed: December 24, 1954

Description	Depth
Mississippian (Floyd Sh.)	0- 990
Mississippian (Gasper-St. Genevieve Ls.)	0- 780
Mississippian (St. Louis Ls.)	780- 892
Mississippian (Fort Payne Ch.)	892- 990
Devonian (Chattanooga Sh.)	990-1008
Devonian (Armuchee Ch.)	1008-1046
Silurian (Red Mountain Fm.)	1046-1106
Samples not worked	1106-1384

Remarks: Samples 42-1384 ft.

#### WALKER COUNTY

Operator: T. O. Posey	G.G.S. No.	D.P. No. 32
Landowner: Vernon Close No. 1-B	Elevation:	815 ft.
Location: 250 ft. S. and 880 ft. W. of N.E. corner of L.L. 33, LD. 7, sect. 4	Total Depth:	3008 ft.
	Completed:	April 5, 1954

Remarks: Radioactivity log.

#### WALKER COUNTY

Operator: T. O. Posey	G.G.S. No. 477	D.P. No. 37
Landowner: Calvin Fowler No. 1	Elevation:	830 ft. G.L.
Location: 1250 ft. S. 250 ft. E. of N.W. corner of L.L. 270, L.D.7	Total Depth:	2490 ft.
	Completed:	October 14, 1954

Remarks: Samples 10-2490 ft.

#### WARE COUNTY

Operator: Waycross Oil and Gas Co.	G.G.S. No. 63	D.P. No.
Landowner: Fredel No. 1	Elevation:	130 ft. G.L.
Location: 10 mi. S. of Waycross, Georgia, at Fredel, Georgia, in L.L. 443, L.D. 8	Total Depth:	3040 ft.
	Completed:	March, 1918

Remarks: Driller's log, lithologic log and samples 100-3000 ft.

#### WARE COUNTY

Operator: Merica Oil Co.	G.G.S. No.	D.P. No.
Landowner:	Elevation:	135 ft. G. L.
Location: 600 ft. S. and 600 ft. E. of N.W. corner of L.L. 465, L.D.8	Total Depth:	4200 ft.
	Completed:	1957

#### WASHINGTON COUNTY

Operator: Middle Georgia Oil & Gas Co.	G.G.S. No. 223	D.P. No.
Landowner: Lillian B. No. 1	Elevation:	480 ft. G. L.
Location: 12 mi. N.W. of Sandersville, Ga.	Total Depth:	605 ft.
	Completed:	January 1, 1921