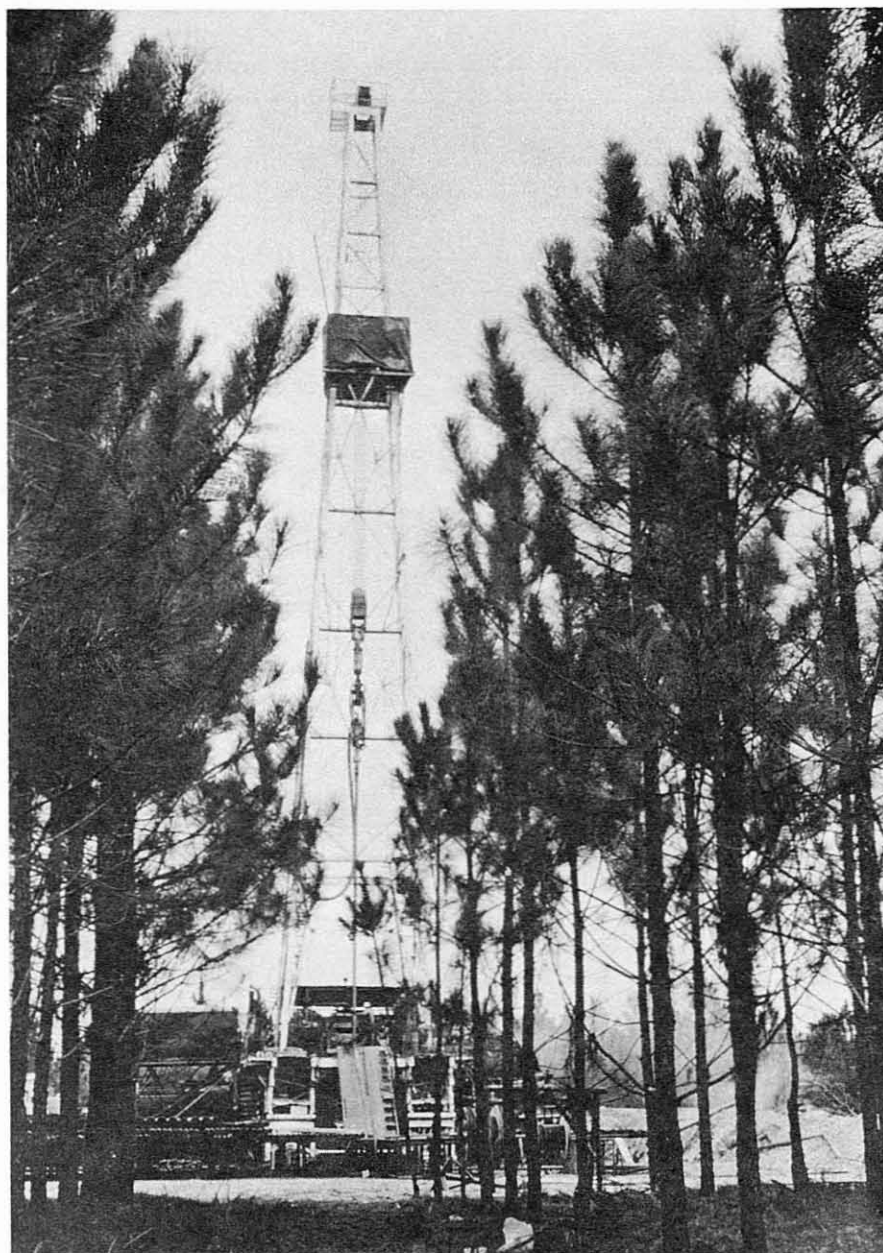


PETROLEUM EXPLORATION IN GEORGIA

Compiled by William E. Marsalis



THE GEOLOGICAL SURVEY OF GEORGIA
DEPARTMENT OF MINES, MINING AND GEOLOGY
JESSE H. AUVIL JR., DIRECTOR

ATLANTA NOVEMBER 1970

In U. Cretaceous (Tuscaloosa Fm.)	2900-3590
L. Cretaceous ? (Comanche series ?)	3590-4008

Remarks: Electric log, hycalog (lithologic log and drilling rate) and samples 30-4000 ft. Formational tops by Dr. S. M. Herrick. Top of U. Cretaceous, as based on electric log, probably at approximate depth of 1870 ft.

TOOMBS COUNTY

Operator: Tropic Oil Co.	G.G.S. No. 95	D.P. No.
Landowner: Gibson No. 1	Elevation: 198 ft. G.L.	
Location: 4.5 mi. S. of R.R. in Lyons, Ga. via U. S. Hwy. 1, 1.4 mi. W. of U. S. Hwy 1 via E. W. dirt road on N. side of said road at top of prominent hill	Total Depth: 3681 ft.	Completed: June, 1945

Description	Depth
No samples	0- 375
In Miocene	375- 448
Oligocene	448- 486
No samples	486- 506
In U. Eocene (Ocala Ls.)	506- 760
M. Eocene (Lisbon Fm.)	760-1090
M. Eocene (Tallahatta Fm.)	1090-1310
In L. Eocene ? (Wilcox Gp.)	1310-1455
Paleocene (Clayton Fm.)	1455-1700
U. Cretaceous ?	1700-1851
U. Cretaceous (post-Tuscaloosa Fm.)	1851-2670
U. Cretaceous (Tuscaloosa Fm.)	2670-3510
L. Cretaceous ? (Comanche series ?)	3510-3663
Basement complex	3663-3681

Remarks: Electric log and samples 375-3661 ft. Formational tops by Dr. S. M. Herrick.

TOOMBS COUNTY

Operator: Tropic Oil Co.	G.G.S. No. 146	D.P. No. 6
Landowner: B. M. Brown No. 1	Elevation: 198 ft. G. L.	
Location: 8 mi. S.E. of Vidalia, Ga.; GMD 1536	Total Depth: 3185 ft.	Completed: September 25, 1947

Description	Depth
No samples	0- 30
In Miocene	30- 655
Oligocene	655- 795
U. Eocene (Ocala Ls.)	795-1020
M. Eocene (Claiborne Gp.)	1020-1350
L. Eocene (Wilcox-Midway Gp.)	1350-1935
U. Cretaceous	1935-3145
U. Cretaceous (possible L. Taylor Age)	2400-2855
U. Cretaceous (in possible Eagle Ford Age)	2855-3100
U. Cretaceous (Tuscaloosa Fm.)	3100-3145

Remarks: Samples 30-3145 ft. Formational tops by Dr. S. M. Herrick.

TOOMBS COUNTY

Operator: Paul B. Guenzel
 Landowner: T. M. and W. B. Green No. 1
 Location: 1905 ft. S. and 1774 ft. W. of N.E.
 corner of Green lease; GMD 1536
 and 1823

G.G.S. No. D.P. No. 73
 Elevation: 241 ft. G.L.
 Total Depth: 3665 ft.
 Completed: January 9, 1964

TREUTLEN COUNTY

Operator: Rose and Ray
 Landowner: James Fowler No. 1
 Location: 6 mi. W. of Soperton, Ga.;
 L.L. 221, GMD 1386

G.G.S. No. 127 D.P. No.
 Elevation: 291 ft.
 Total Depth: 2125 ft.
 Completed: October? 1940

Description	Depth
No samples	0-765
In M. Eocene (Claiborne Gp.)	765-1085
L. Eocene (Wilcox Gp.)	1085-1255
Paleocene (Clayton Fm.)	1255-1315
In U. Cretaceous (post-Tuscaloosa Fm.)	1315-2005
No samples	2005-2035
In U. Cretaceous (Tuscaloosa Fm.)	2035-2125

Remarks: Lithologic log, samples 765-2125 ft. Formational tops by Dr. S. M. Herrick.

TREUTLEN COUNTY

Operator: Barnwell Drilling Co.
 Landowner: James Gillis No. 1
 Location: 1950 ft. N. and 14 deg. E. of
 N.E. corner of intersection of
 Hwy. 46 and Hwy 227, Soper-
 ton GMD 1386

G.G.S. No. 730 D.P. No. 67
 Elevation: 351 ft. G.L.
 Total Depth: 3240 ft.
 Completed: August 24, 1961