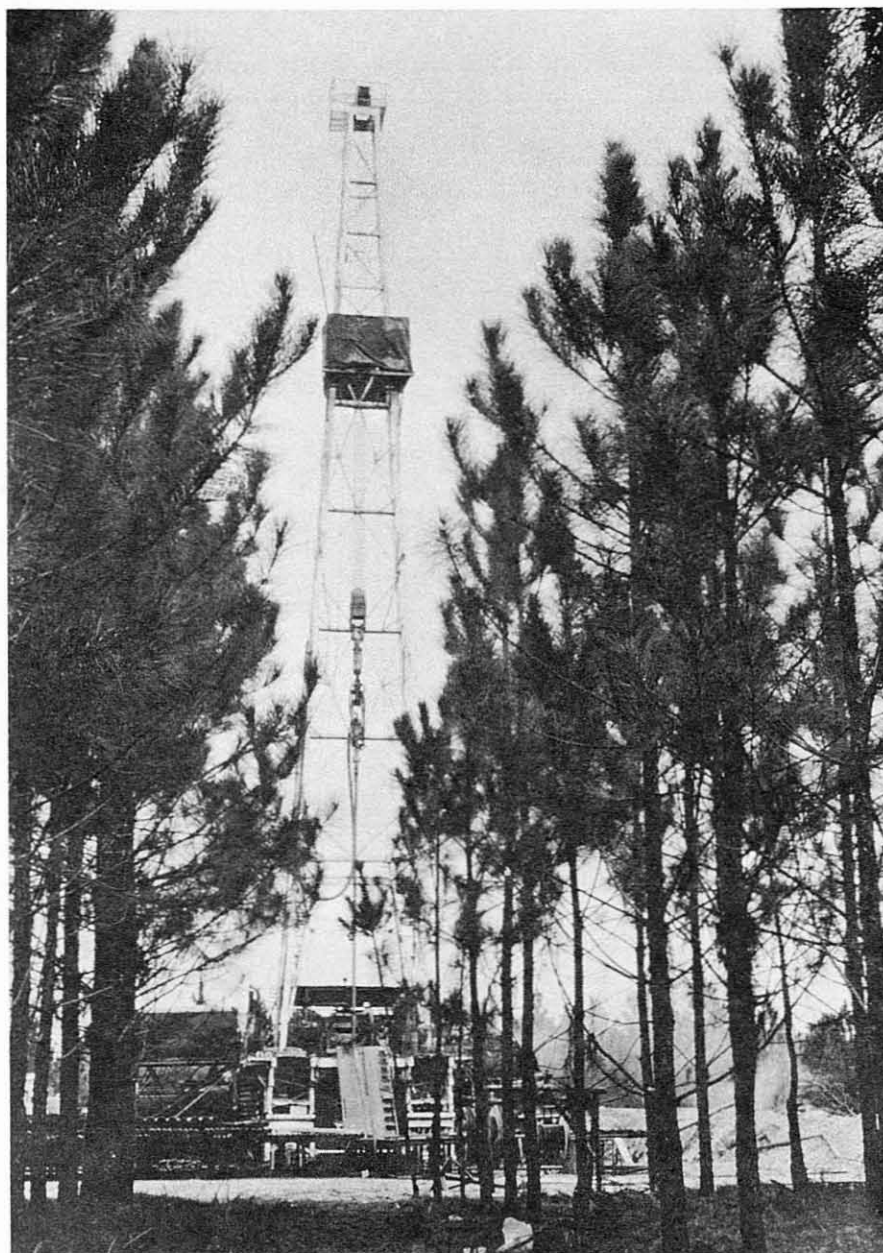


# PETROLEUM EXPLORATION IN GEORGIA

Compiled by William E. Marsalis



THE GEOLOGICAL SURVEY OF GEORGIA  
DEPARTMENT OF MINES, MINING AND GEOLOGY  
JESSE H. AUVIL JR., DIRECTOR

ATLANTA      NOVEMBER 1970

U. Eocene (Ocala Ls.)	465-1040
M. Eocene (Lisbon Fm.)	1040-1435
M. Eocene (Tallahatta Fm.)	1435-1505
L. Eocene (Wilcox Gp.)	1505-1840
Paleocene (Clayton Fm.)	1840-2280
U. Cretaceous (post-Eutaw Fm.)	2280-3470
U. Cretaceous (Eutaw Fm., restricted)	3470-3615
U. Cretaceous (Tuscaloosa Fm.)	3615-4250
Basement complex	4250-4254

Remarks: Electric log, gamma ray log, and samples 0-4254 ft. Formational tops by Dr. S. M. Herrick

#### MACON COUNTY

Operator: Merica Oil Co.	G.G.S. No.	D.P. No. 39
Landowner: J. F. Forhand No. 1	Elevation:	290 ft. D.F.
Location: 500 ft. S. and 600 ft. E. of N.W. corner of L.L. 182, L.D. 1	Total Depth:	2140 ft.
	Completed:	July 23, 1954

Description	Depth
No samples	0- 100
In Paleocene	100- 340
U. Cretaceous	340-1510
U. Cretaceous (Eutaw Fm.)	520- 765
U. Cretaceous (Tuscaloosa Fm.)	765-1510
L. Cretaceous (Comanche series)	1510-2130
No samples	2130-2139
In Basement complex	2139-2140

Remarks: Electric log. Formational tops by Mrs. Katherine H. Keene.

#### MARION COUNTY

Operator: Lee Oil and Natural Gas Co.	G.G.S. No. 476	D.P. No. 44
Landowner: J. S. Bergin No. 1	Elevation:	600 ft. G.L.
Location: 1716 ft. S. and 1441 ft. E. of N.W. corner of L.L. 207, L.D. 31.	Total Depth:	1770 ft.
	Completed:	April 19, 1956

Description	Depth
Paleocene (Clayton Fm.)	0- 10
No samples	10- 20
In U. Cretaceous (Providence Sand)	20- 180