

SFC.

STATE		Georgia		COUNTY		Early	
TOWNSHIP		G.G.S. 2135		SURVEY		R.E. McLaughlin.	
WELL NO.		6250'-7295'		LEASE			
COMPANY				CASING RECORD		182' G.L.	
I. PROD.							

FORM 797 - For sale by Ross-Martin Co., Tulsa

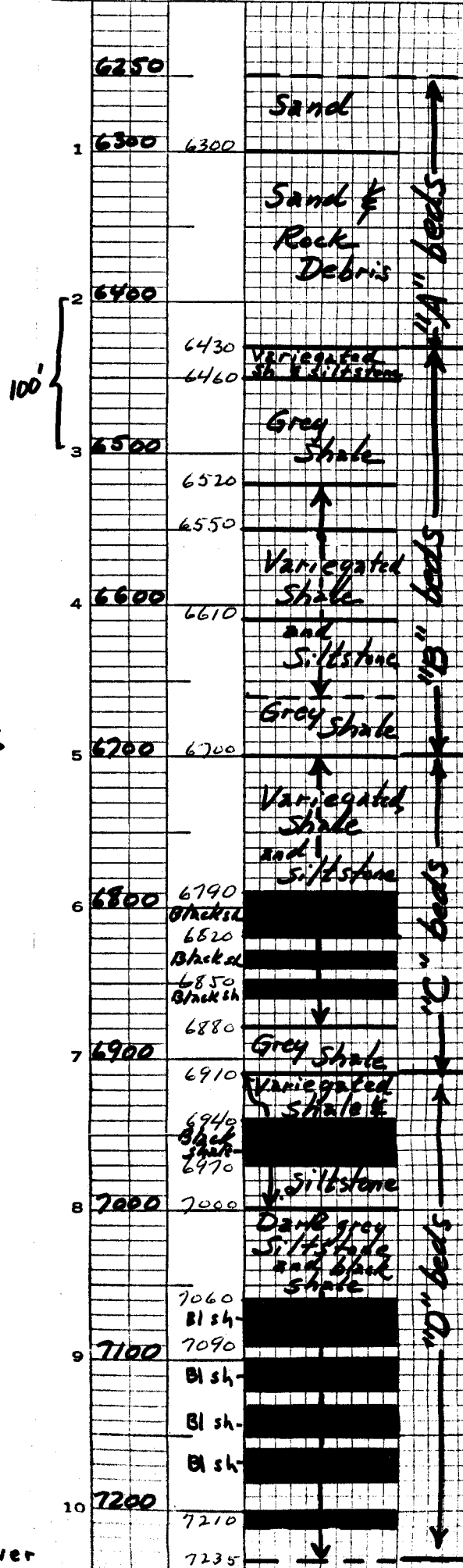
G.G.S. 2135

- "A" beds: 6250'-6430' = 180'
- "B" beds: 6430'-6700' = 270'
- "C" beds: 6700'-6910' = 210'
- "D" beds: 6910'-7235' = 325'
- "E" beds: 7235'-7286' = 51'
- "F" beds: 7286'-7295' = 9'

Note:

GGS 2135: 182' G.L.
 GGS 1145: 190' G.L.

Black shale drawn in at approximate stratigraphic position & thickness.



over

