

WELL SCHEDULE

SITE NAME 14FF50 OTHER IDENTIFIER Maltbie Street #2 WELL NUMBER 335740083594401Latitude 33° 57' 40.32" Longitude -83° 59' 43.13" Ground Elevation 1019.33 NGVD 29OWNER City of Lawrenceville Casing Elevation 1023.31 NGVD 29

WELL CONSTRUCTION DESCRIPTION

Name of Aquifer: metamorphic - crystalline rock

TYPE OF DRILLING

 Rotary Total Depth 387 Percussion Static Water Level (bls) Bored Level 22.21 @
10/31/2001 10:52:00 AM

DRILL HOLE DIAMETER

Size 16 in, from 0 ft to 50.8 ftSize 14.7 in, from 50.8 ft to 77.5 ftSize 10 in, from 77.5 ft to 275 ftSize 6 in, from 275 ft to 387 ft

CASING RECORD

Type material steelSize 10 in, from 0 ft to 77.5 ft

Size _____ in, from _____ ft to _____ ft

Size _____ in, from _____ ft to _____ ft

WELL SCREEN

Type material open hole

Size _____ in, from _____ ft to _____ ft

Size _____ in, from _____ ft to _____ ft

Size _____ in, from _____ ft to _____ ft

Date drilled 2/17/1998 2/19/1998Driller Atlanta Drilling and ExplorationGROUTING YES NOType cement groutFrom 0 ft to 50.8 ftFrom 50.8 ft to 77.5 ft

From _____ ft to _____ ft

TEST PUMP DATA

Pumped Bailed _____Estimated 300 (air-lift yield)Date tested 2/22/1999 2/27/1999

Pump rated _____ gal/min _____ HP

Test yield 600.0 gal/min After 116 hrsWater level before test 22.39 ft btocDrawdown 82.3 ftSpecific Capacity 7.3 gal/min/ft

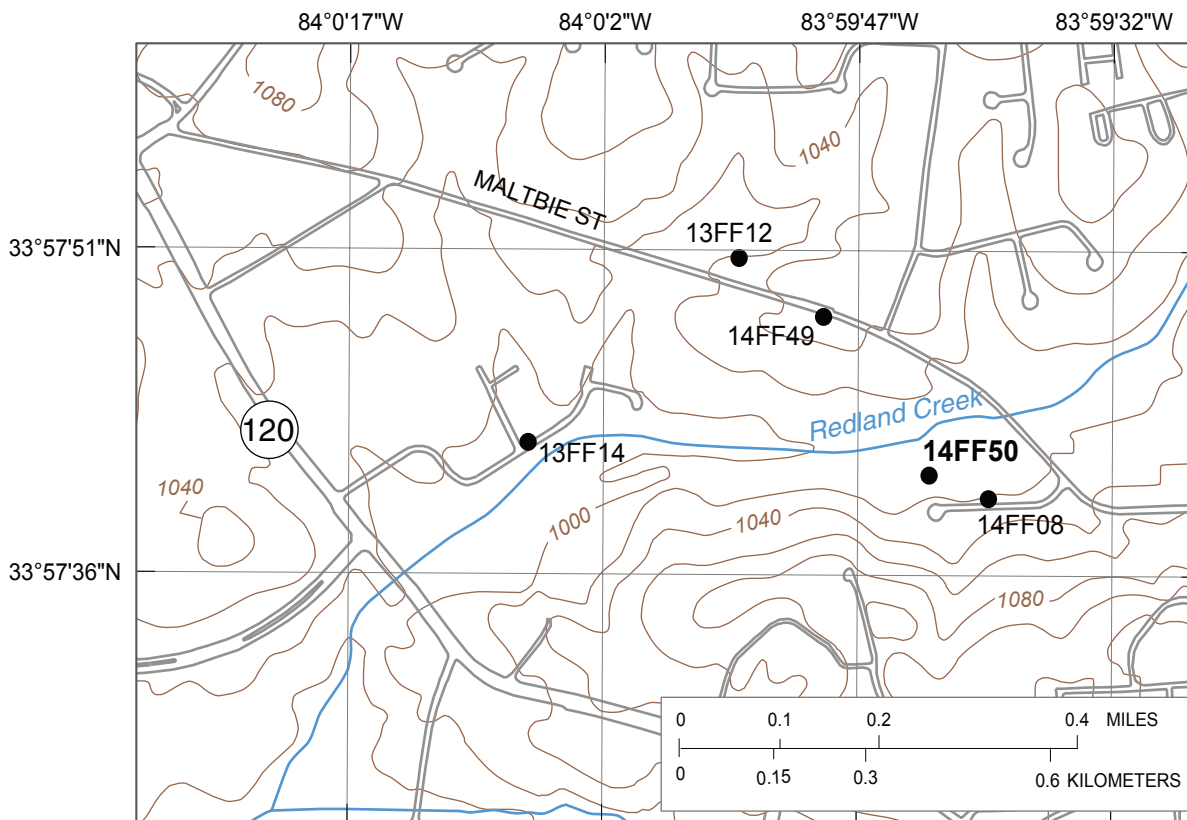
Altitudes are in reference to NGVD 29

Latitude/longitude in NAD 83

Depths are in feet below land surface (bls)

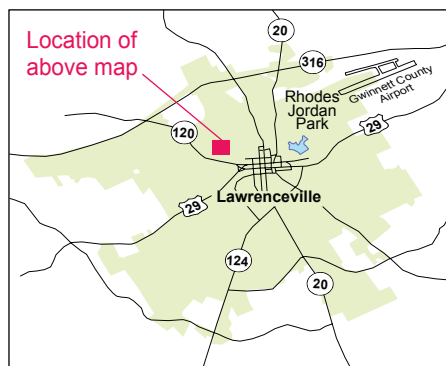
Feet below top of casing (ft btoc)

Comments: Well drilled near older historic well 14FF08; drilling oversight by Zuhair F. Rammo of E&CIntegration Services; from geophysical logging: major fracture openings at 185.5-187.5', 210.5-212.5', 213.5-214.5'; air-lift yield (300 gal/min) only checked at bottom of hole,



Base from U.S. Geological Survey 1:24,000-scale, Luxomni Roads from City of Lawrenceville 1999 digital data

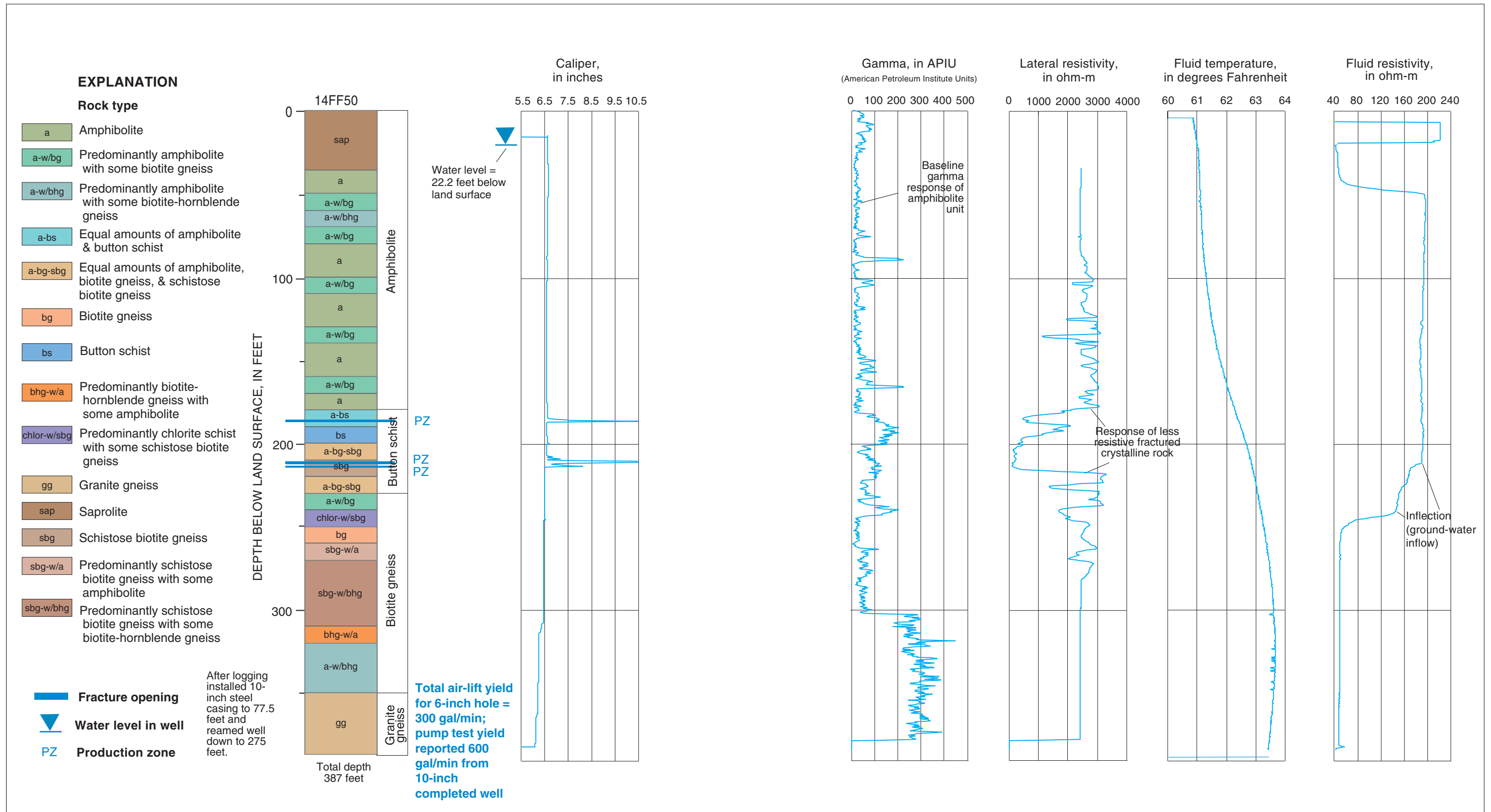
14FF50 ● **EXPLANATION**
 Observation well and site name



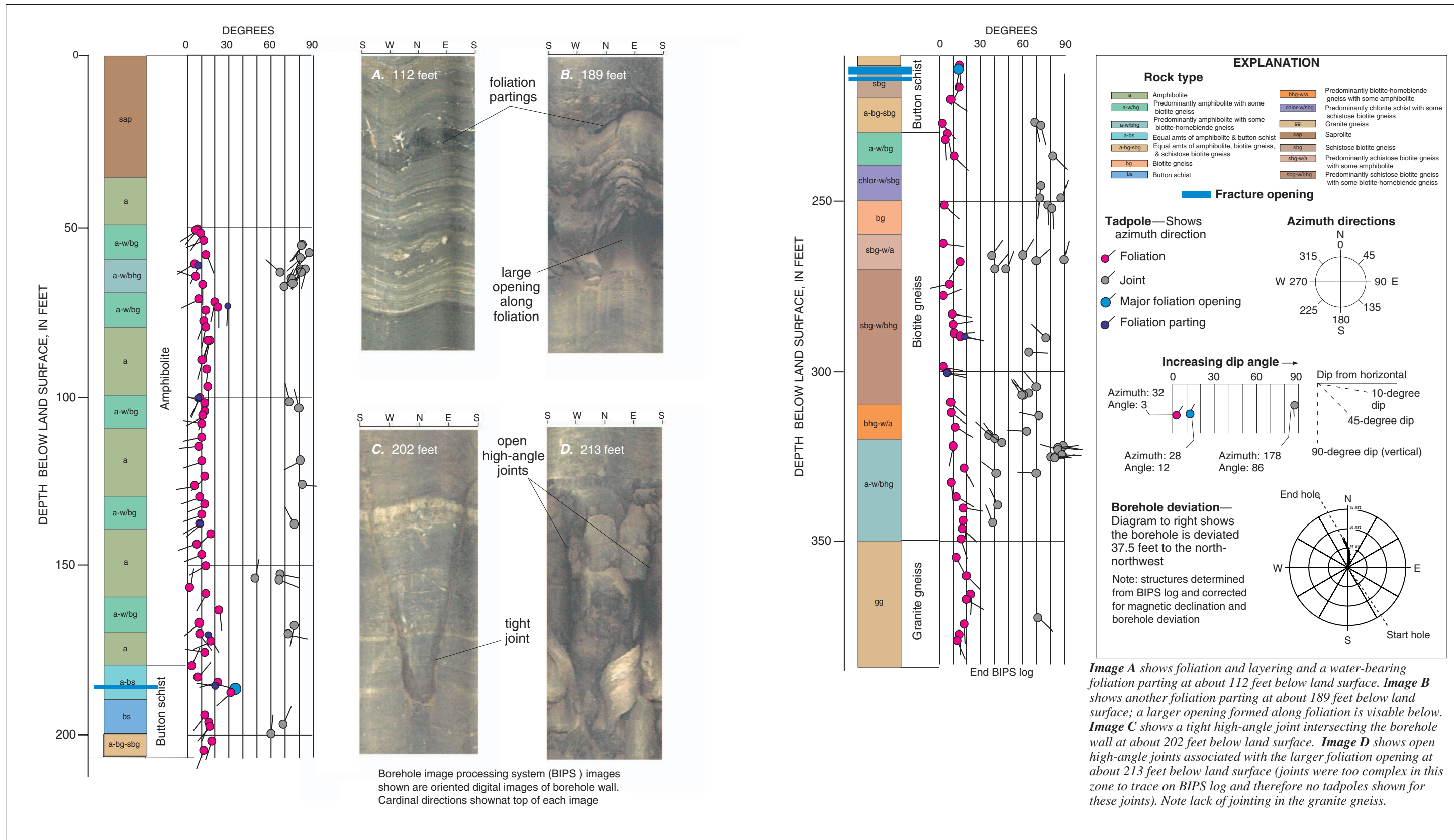
Geophysical log files for well 14FF50 [contained on CD in Supplemental_data\log_archive\logs.zip; ft bls, feet below land surface]

File Name	Type	Date	Start Depth (ft bls)	Stop Depth (ft bls)
14FF50.19980505.ZE01	Combination Tool ¹	05/05/98	0	384.9
14FF50.19980810.AT01	Acoustic Televiwer ²	08/10/98	58.51	385.76
14FF50.19980505.CT01	Caliper, Three Arm	05/05/98	15	383.6
14FF50.19980506.ZI01	Gamma and EM Induction	05/06/98	0	385.1

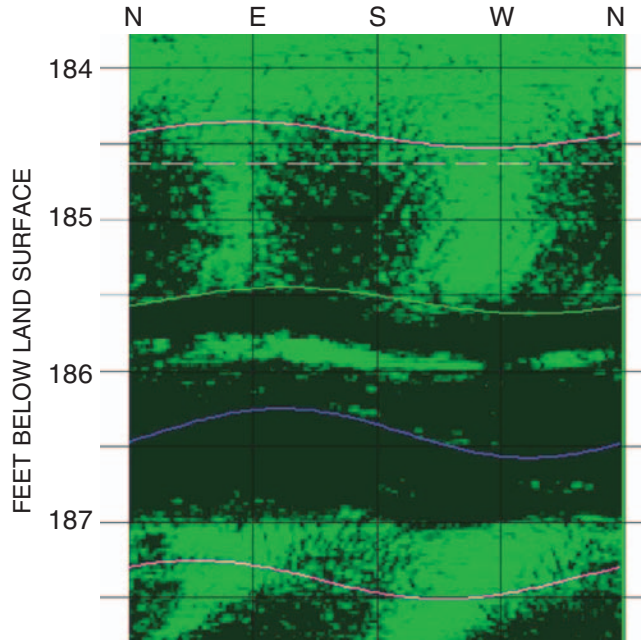
^{1/} Includes gamma, long/short normal resistivity, spontaneous potential, single-point resistance, fluid resistivity, and temperature
^{2/} Does not include trace data, original log is provided in Century binary format under the same file name with extension ".log"



Lithology and borehole geophysical logs for well 14FF50 (Maltbie Street #2 well), Lawrenceville, Georgia.



Structural tadpole plot and BIPS images for well 14FF50 (Maltbie Street #2 well), Lawrenceville, Georgia.



Projected acoustic televiewer image of borehole wall from well 14FF50. Purple line traces rock foliation. Green line traces foliation just above an opening formed parallel to foliation and compositional layering. Blue line traces the center of a large opening formed parallel to foliation and compositional layering (aperture is approximately 10.3 inches).