

WELL SCHEDULE

SITE NAME 14FF47 OTHER IDENTIFIER Boys Girls Club WELL NUMBER 335633083494201
 Latitude 33° 56' 34.71" Longitude -83° 59' 43.20" Ground Elevation 1004.21 NGVD 29
 OWNER City of Lawrenceville Casing Elevation 1006.07 NGVD 29

WELL CONSTRUCTION DESCRIPTION

Name of Aquifer: metamorphic - crystalline rock

TYPE OF DRILLING

Rotary Total Depth 300
 Percussion Static Water Level (bls)
 Bored 5.86 @

10/31/20019:34:00 AM

DRILL HOLE DIAMETER

Size 8 in, from 0 ft to 39.5 ft
 Size 6 in, from 39.5 ft to 300 ft
 Size _____ in, from _____ ft to _____ ft

CASING RECORD

Type material PVC
 Size 6 in, from 0 ft to 39.5 ft
 Size _____ in, from _____ ft to _____ ft
 Size _____ in, from _____ ft to _____ ft

WELL SCREEN

Type material open hole
 Size _____ in, from _____ ft to _____ ft
 Size _____ in, from _____ ft to _____ ft
 Size _____ in, from _____ ft to _____ ft

Date drilled 11/4/1997 11/5/1997

Driller Atlanta Drilling and Exploration

GROUTING YES NO

Type bentonite

From 0 ft to 39.5 ft

From _____ ft to _____ ft

From _____ ft to _____ ft

TEST PUMP DATA

Pumped Bailed _____

Estimated 25 (air-lift yield)

Date tested _____

Pump rated _____ gal/min _____ HP

Test yield _____ gal/min After _____ hrs

Water level before test _____ ft btoc

Drawdown _____ ft

Specific Capacity _____ gal/min/ft

Altitudes are in reference to NGVD 29

Latitude/longitude in NAD 83

Depths are in feet below land surface (bls)

Feet below top of casing (ft btoc)

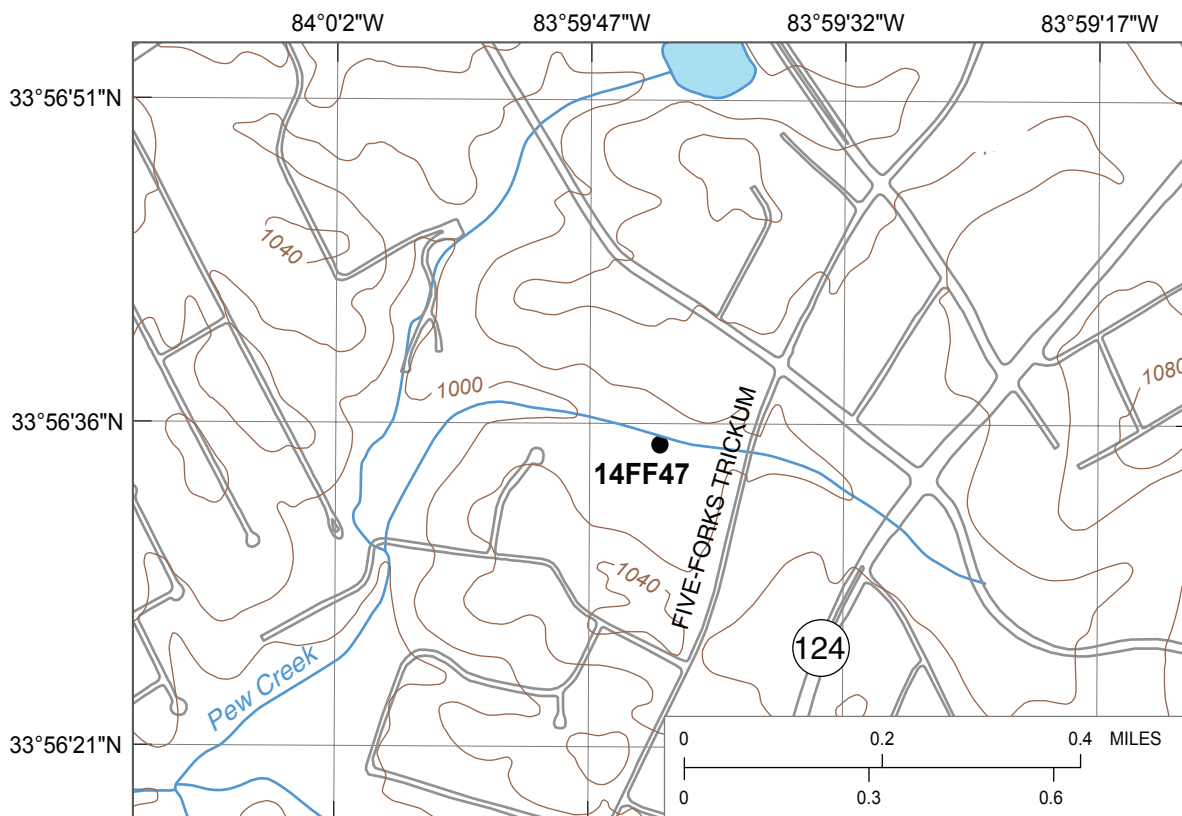
Comments: Well part of city ground-water exploration effort; drilling oversight by Zuhair F. Rammo of E&C

Integration Services; from geophysical logging: openings at 26-35', 51-52' correlate to increases

in air-lift yield from this interval (11 gal/min); openings at 172.5-176', 204-205' are possible

production zones, fracture opening at 235.5-236.5' correlates to increase in air-lift yield in this interval and is

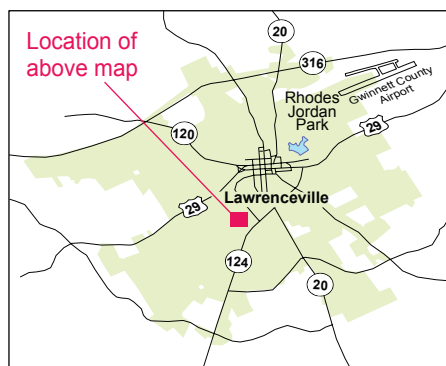
interpreted to be the main water-producing zone; opening at 274-275' is a possible water-bearing zone



Base from U.S. Geological Survey 1:24,000-scale, Luxomni Roads from City of Lawrenceville 1999 digital data

EXPLANATION

● Observation well and site name
14FF47

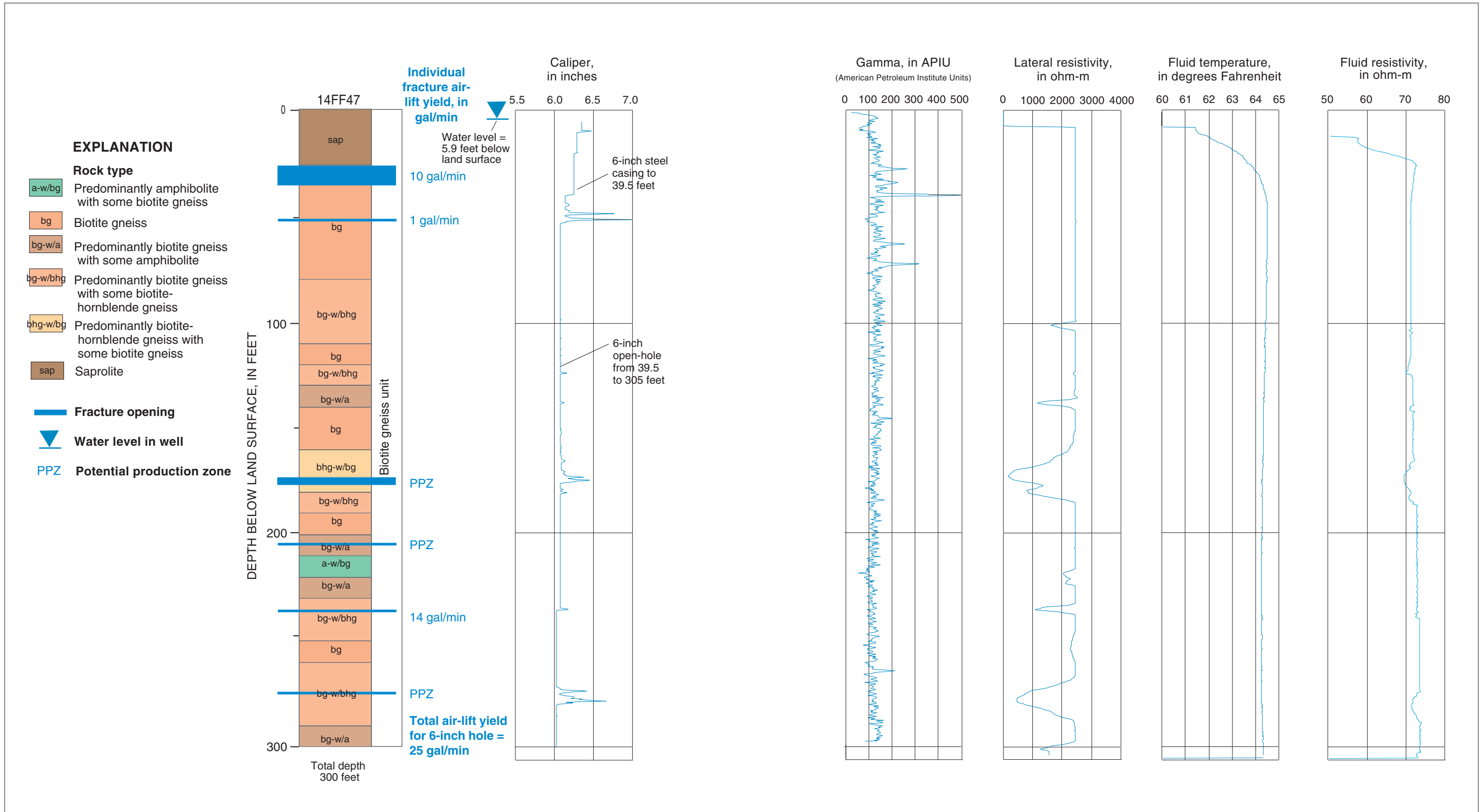


Geophysical log files for well 14FF47 [contained on CD in Supplemental_data\log_archive\logs.zip; ft bls, feet below land surface]

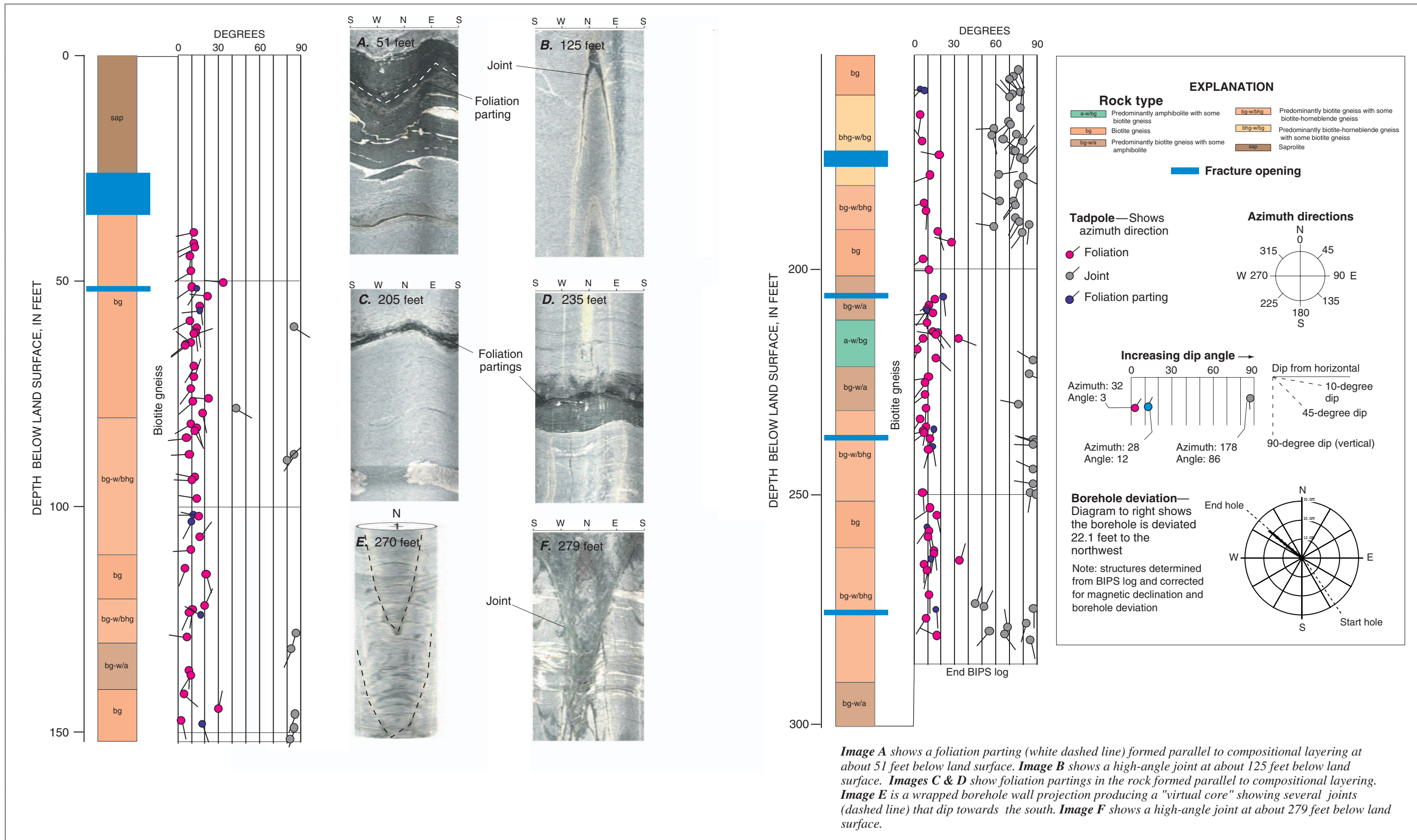
File name	Type	Date	Start depth (ft bls)	Stop depth (ft bls)
14FF47.19980128.ZE01	Combination Tool ¹	01/28/98	0.7	300
14FF47.19980812.AT01	Acoustic Televiewer ²	08/12/98	42.25	295.32
14FF47.19980121.CT01	Caliper, Three Arm	01/21/98	5.2	300
14FF47.19980128.ZI01	Gamma and EM Induction	01/28/98	0.7	300

^{1/} Includes gamma, long/short normal resistivity, spontaneous potential, single-point resistance, fluid resistivity, and temperature

^{2/} Does not include trace data, original log is provided in Century binary format under the same file name with extension ".log"



Lithology and borehole geophysical logs for well 14FF47 (Boys and Girls Club well), Lawrenceville, Georgia.



Structural tadpole plot and BIPS images for well 14FF47 (Boys and Girls Club well), Lawrenceville, Georgia.