

## WELL SCHEDULE

SITE NAME 14FF46 OTHER IDENTIFIER North City Lake WELL NUMBER 335752083584801Latitude 33° 57' 52.51" Longitude -83° 58' 47.58" Ground Elevation 1022.9 NGVD 29OWNER City of Lawrenceville Casing Elevation 1028.46 NGVD 29

## WELL CONSTRUCTION DESCRIPTION

Name of Aquifer: metamorphic - crystalline rock

## TYPE OF DRILLING

 Rotary Total Depth 301 Percussion Static Water Level (bls) Bored 0.65 @  
12/31/1999 3:30:00 PM

## DRILL HOLE DIAMETER

Size 12 in, from 0 ft to 9 ftSize 6 in, from 9 ft to 301 ft

Size \_\_\_\_\_ in, from \_\_\_\_\_ ft to \_\_\_\_\_ ft

## CASING RECORD

Type material steelSize 6 in, from 0 ft to 9 ft

Size \_\_\_\_\_ in, from \_\_\_\_\_ ft to \_\_\_\_\_ ft

Size \_\_\_\_\_ in, from \_\_\_\_\_ ft to \_\_\_\_\_ ft

## WELL SCREEN

Type material open hole

Size \_\_\_\_\_ in, from \_\_\_\_\_ ft to \_\_\_\_\_ ft

Size \_\_\_\_\_ in, from \_\_\_\_\_ ft to \_\_\_\_\_ ft

Size \_\_\_\_\_ in, from \_\_\_\_\_ ft to \_\_\_\_\_ ft

Date drilled 11/3/1997 11/4/1997Driller Drilling and Exploration, Inc.GROUTING  YES  NOType groutFrom 0 ft to 9 ft

From \_\_\_\_\_ ft to \_\_\_\_\_ ft

From \_\_\_\_\_ ft to \_\_\_\_\_ ft

## TEST PUMP DATA

Pumped  Bailed \_\_\_\_\_Estimated 70 (air-lift yield)

Date tested \_\_\_\_\_

Pump rated \_\_\_\_\_ gal/min \_\_\_\_\_ HP

Test yield \_\_\_\_\_ gal/min After \_\_\_\_\_ hrs

Water level before test \_\_\_\_\_ ft btoc

Drawdown \_\_\_\_\_ ft

Specific Capacity \_\_\_\_\_ gal/min/ft

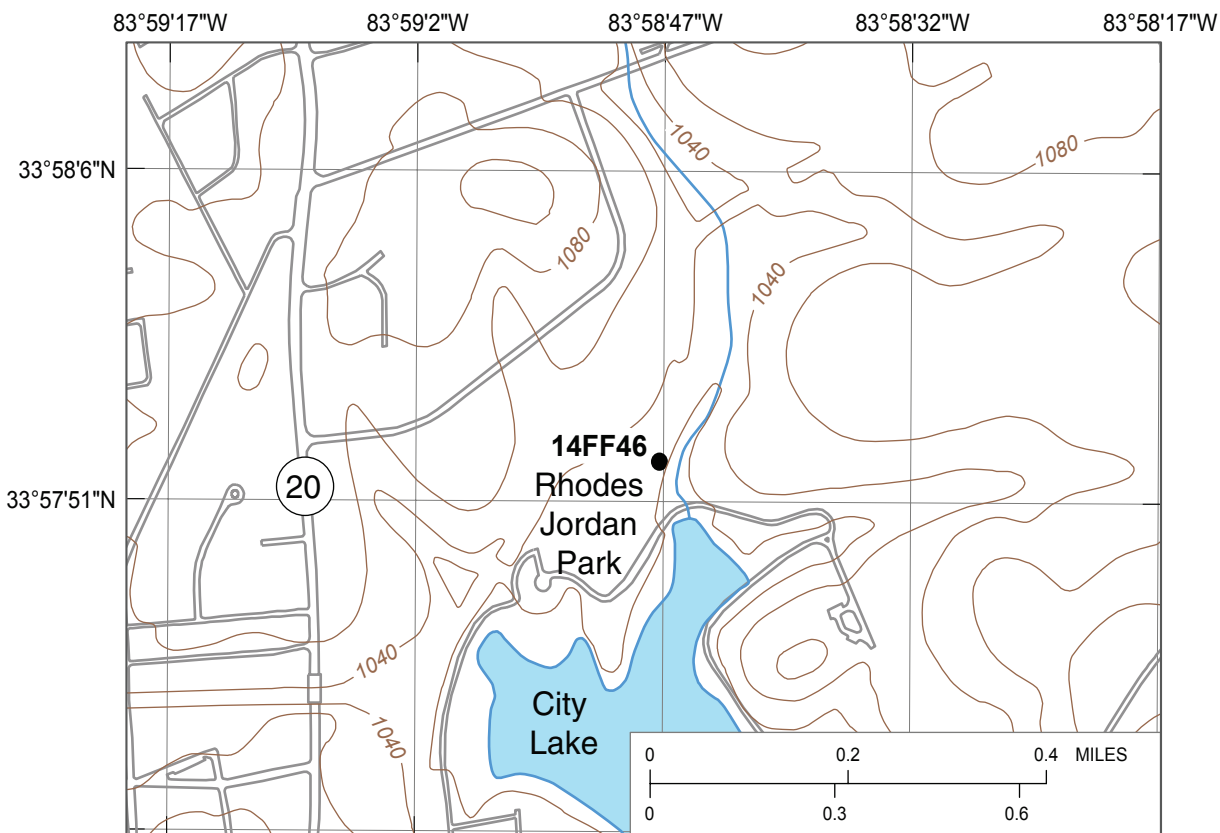
Altitudes are in reference to NGVD 29

Latitude/longitude in NAD 83

Depths are in feet below land surface (bls)

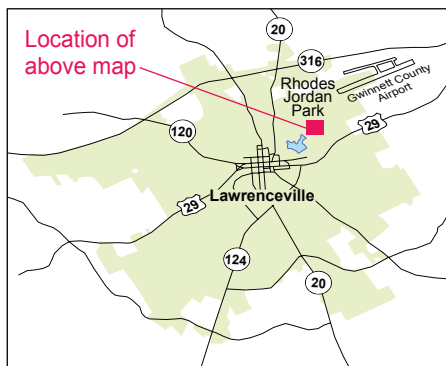
Feet below top of casing (ft btoc)

Comments: Well part of city ground-water exploration effort; drilling oversight by Zuhair F. Rammo of E&CIntegration Services; opening at 10-11' is water bearing based on air-lift yield increase during drilling;major water-bearing zones at 62-63' and 145.5-146.5'; possible production zone at 227-228'



Base from U.S. Geological Survey 1:24,000-scale, Luxomni  
Roads from City of Lawrenceville 1999 digital data

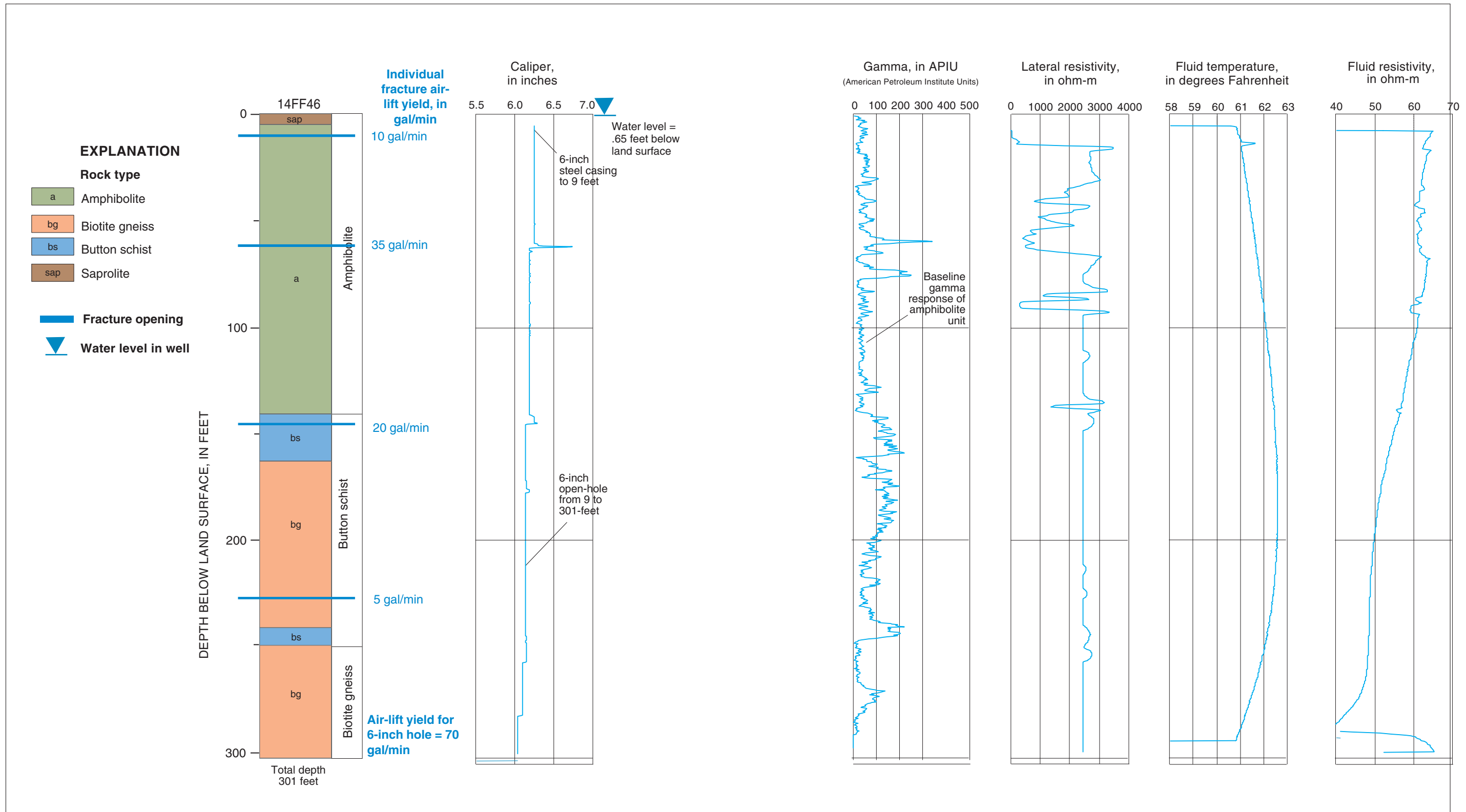
**14FF46** ● **EXPLANATION**  
Observation well  
and site name



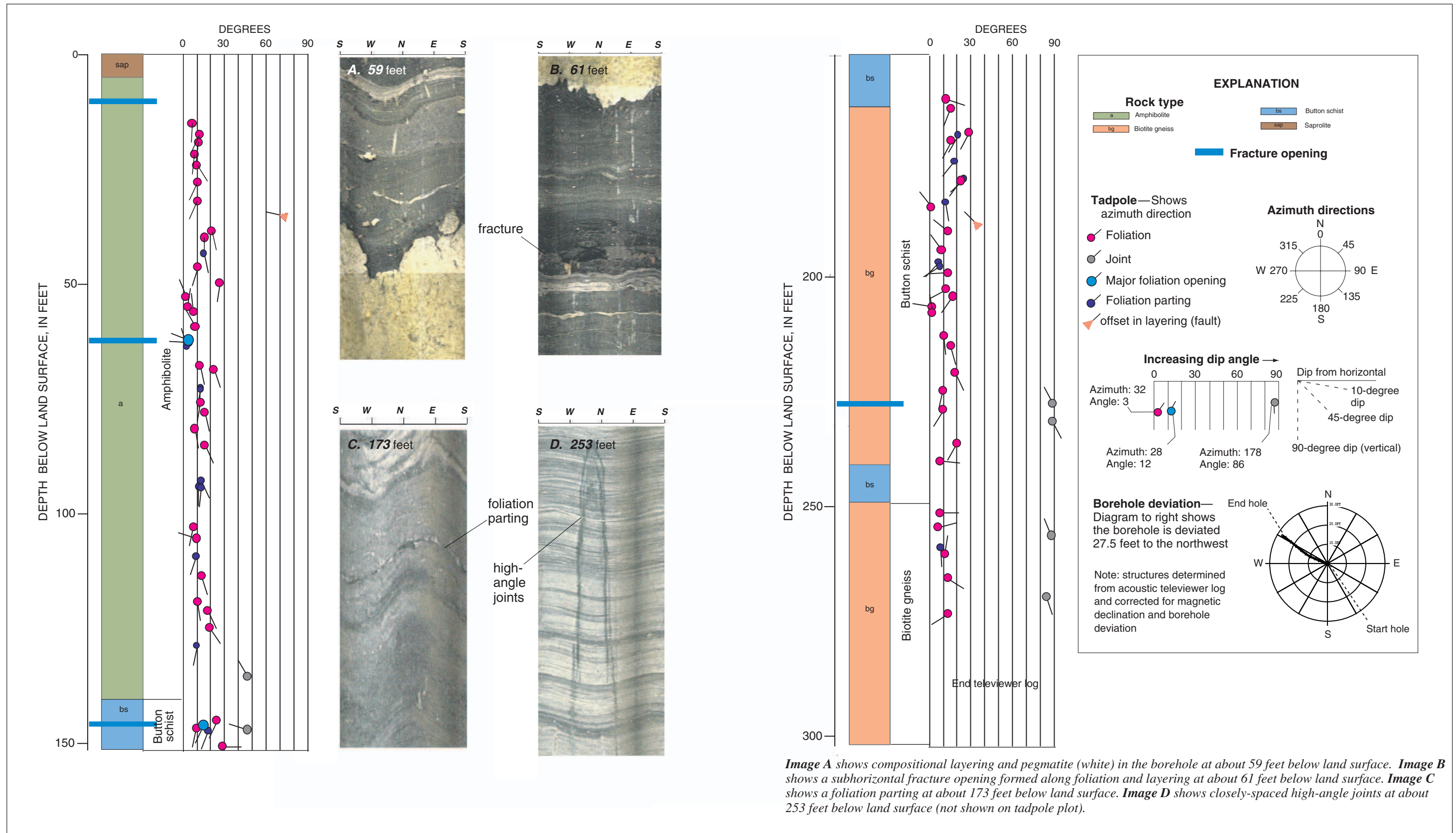
Geophysical log files for well 14FF46 [contained on CD in Supplemental\_data\log\_archive\logs.zip;  
ft bls, feet below land surface]

File name	Type	Date	Start depth (ft bls)	Stop depth (ft bls)
14FF46.19980121.ZE01	Combination Tool <sup>1</sup>	01/21/98	0.7	301
14FF46.19980401.AT01	Acoustic Televierer <sup>2</sup>	04/01/98	6.2	288.3
14FF46.19980811.AT01	Acoustic Televierer <sup>2</sup>	08/11/98	17.95	288.53
14FF46.19980121.CT01	Caliper, Three Arm	01/21/98	5.1	301
14FF46.19980121.ZI01	Gamma and EM Induction	01/21/98	0.8	296.5

<sup>1</sup>/ Includes gamma, long/short normal resistivity, spontaneous potential, single-point resistance, fluid resistivity, and temperature  
<sup>2</sup>/ Does not include trace data, original log is provided in Century binary format under the same file name with extension ".log"



Lithology and borehole geophysical logs for well 14FF46 (North City Lake well), Lawrenceville, Georgia.



**Image A** shows compositional layering and pegmatite (white) in the borehole at about 59 feet below land surface. **Image B** shows a subhorizontal fracture opening formed along foliation and layering at about 61 feet below land surface. **Image C** shows a foliation parting at about 173 feet below land surface. **Image D** shows closely-spaced high-angle joints at about 253 feet below land surface (not shown on tadpole plot).

Structural tadpole plot and BIPS images for well 14FF46 (North City Lake well), Lawrenceville, Georgia.