

## WELL SCHEDULE

SITE NAME 14FF39 OTHER IDENTIFIER City Park 14FF39 WELL NUMBER 335733083584502

Latitude 33° 57' 34.12" Longitude -83° 58' 44.81" Ground Elevation 993.37 NGVD 29

OWNER City of Lawrenceville Casing Elevation 996.09 NGVD 29

## WELL CONSTRUCTION DESCRIPTION

Name of Aquifer: metamorphic - crystalline rock

## TYPE OF DRILLING

Rotary Total Depth 180  
 Percussion Static Water Level (bls)  
 Bored pumping in well field

## DRILL HOLE DIAMETER

Size 12 in, from 0 ft to 36 ft  
 Size 6 in, from 36 ft to 180 ft  
 Size \_\_\_\_\_ in, from \_\_\_\_\_ ft to \_\_\_\_\_ ft

## CASING RECORD

Type material steel  
 Size 6 in, from 0 ft to 36 ft  
 Size \_\_\_\_\_ in, from \_\_\_\_\_ ft to \_\_\_\_\_ ft  
 Size \_\_\_\_\_ in, from \_\_\_\_\_ ft to \_\_\_\_\_ ft

## WELL SCREEN

Type material open hole  
 Size \_\_\_\_\_ in, from \_\_\_\_\_ ft to \_\_\_\_\_ ft  
 Size \_\_\_\_\_ in, from \_\_\_\_\_ ft to \_\_\_\_\_ ft  
 Size \_\_\_\_\_ in, from \_\_\_\_\_ ft to \_\_\_\_\_ ft

Date drilled October 1995

Driller USGS

GROUTING  YES  NO

Type cement grout

From 0 ft to 36 ft

From \_\_\_\_\_ ft to \_\_\_\_\_ ft

From \_\_\_\_\_ ft to \_\_\_\_\_ ft

## TEST PUMP DATA

Pumped  Bailed \_\_\_\_\_

Estimated 150 (air-lift yield)

Date tested \_\_\_\_\_

Pump rated \_\_\_\_\_ gal/min \_\_\_\_\_ HP

Test yield \_\_\_\_\_ gal/min After \_\_\_\_\_ hrs

Water level before test \_\_\_\_\_ ft btoc

Drawdown \_\_\_\_\_ ft

Specific Capacity \_\_\_\_\_ gal/min/ft

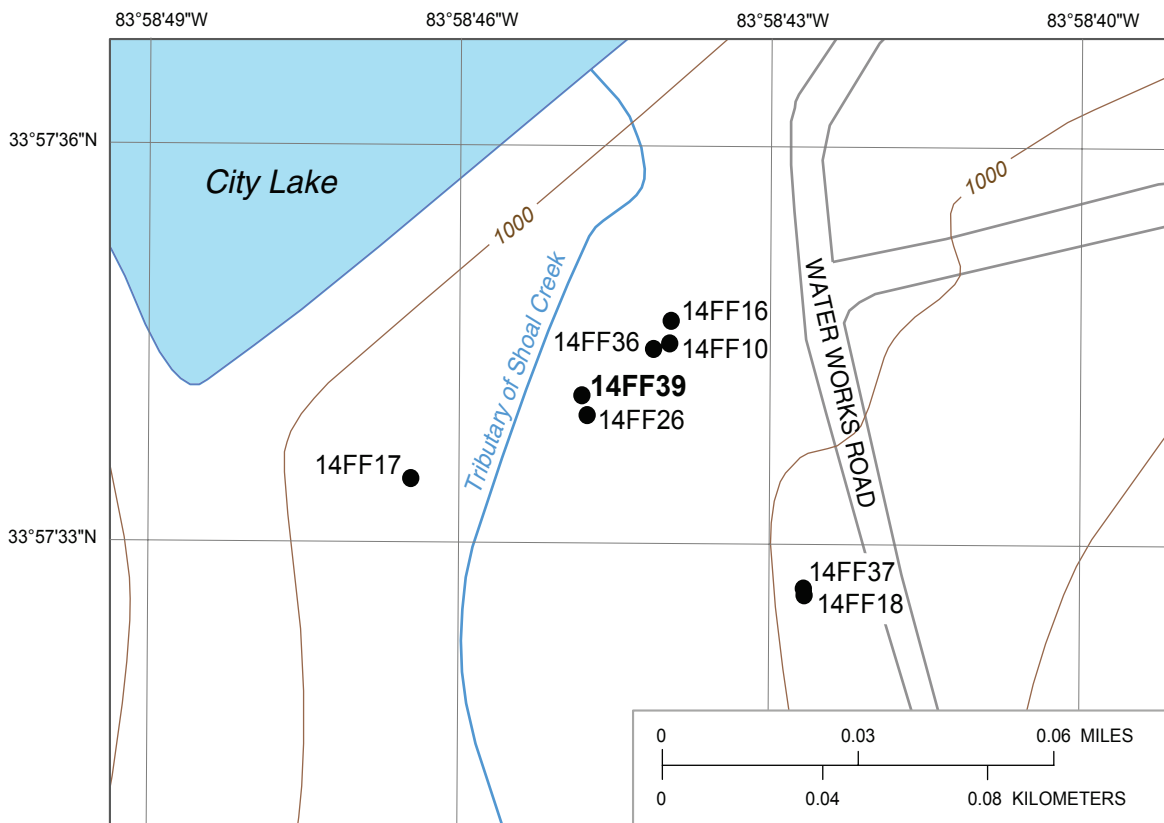
Altitudes are in reference to NGVD 29

Latitude/longitude in NAD 83

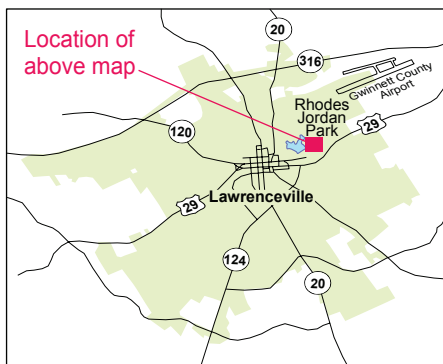
Depths are in feet below land surface (bls)

Feet below top of casing (ft btoc)

Comments: Drilled as part of USGS test-drilling program; located next to core hole (14FF26)



Base from U.S. Geological Survey 1:24,000-scale, Luxomni Roads from City of Lawrenceville 1999 digital data

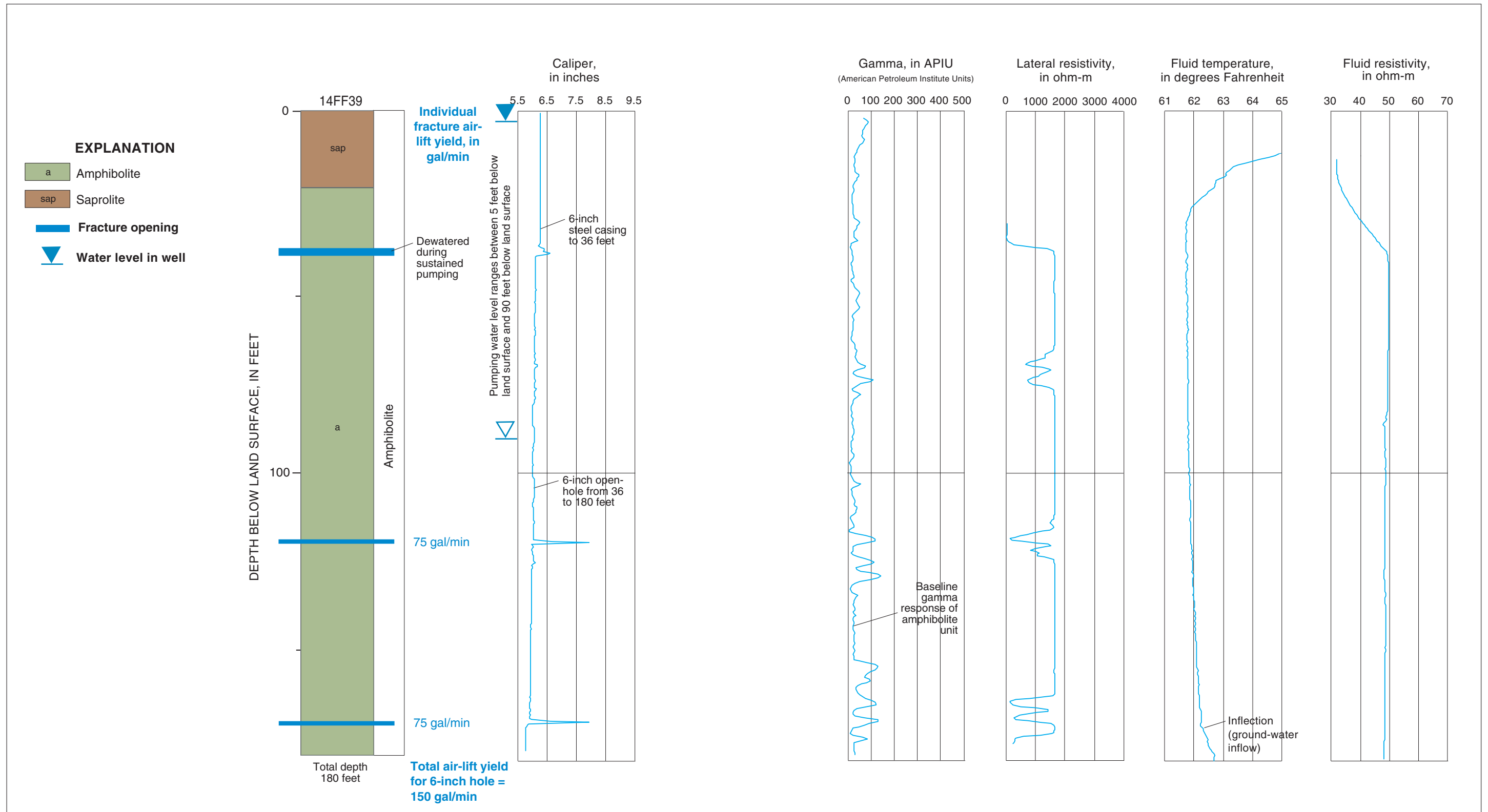


**14FF39** **EXPLANATION**  
 ● Observation well and site name

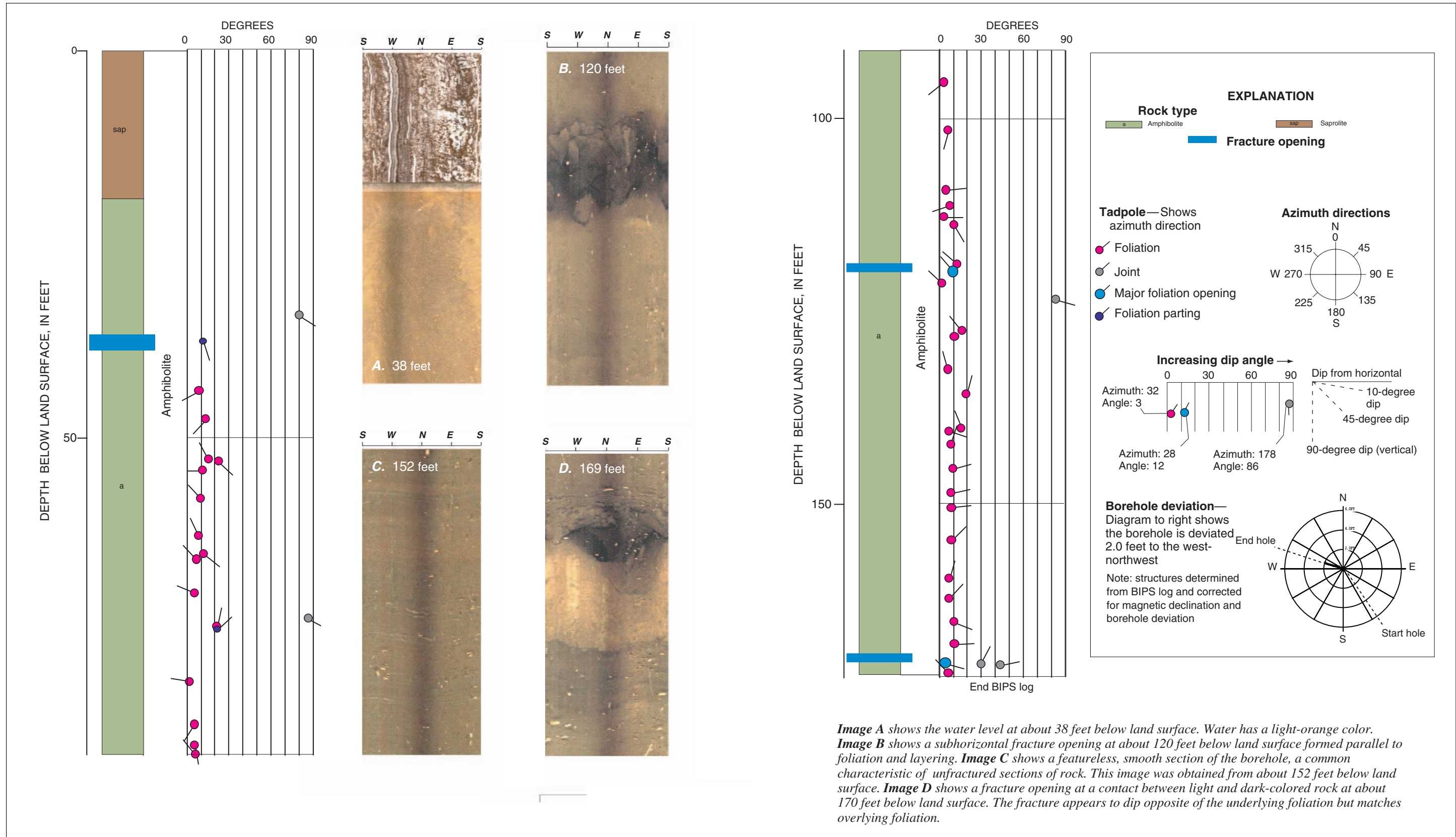
Geophysical log files for well 14FF39 [contained on CD in Supplemental\_data\log\_archive\logs.zip; ft bls, feet below land surface]

File name	Type	Date	Start depth (ft bls)	Stop depth (ft bls)
14FF39.20011103.ZE01	Combination Tool <sup>1</sup>	11/3/01	-1.9	177
14FF39.20011103.AT01	Acoustic Televiewer <sup>2</sup>	11/3/01	139.92	176.45
14FF39.19951024.WD01	Borehole Deviation	10/24/95	4	179.4
14FF39.19951024.CT01	Caliper, Three Arm	10/24/95	-2	179.4
14FF39.20011103.CT01	Caliper, Three Arm	11/3/01	2.5	176.5
14FF39.19951024.FR01	Fluid Resistivity	10/24/95	10	180
14FF39.19951024.FT01	Fluid Temperature	10/24/95	0	180
14FF39.19951024.EF01	Focused Resistivity	10/24/95	0	177.2
14FF39.19951024.NG01	Gamma	10/24/95	0	180
14FF39.19951024.EL01	Long-normal Resistivity	10/24/95	38.5	180
14FF39.19951024.ES01	Short-normal Resistivity	10/24/95	38.5	180
14FF39.19951024.ER01	Single-point Resistance	10/24/95	0	180
14FF39.19951024.ER02	Single-point Resistance	10/24/95	0.2	180
14FF39.19951024.EP01	Spontaneous Potential	10/24/95	38.5	180

<sup>1/</sup> Includes gamma, long/short normal resistivity, spontaneous potential, single-point resistance, fluid resistivity, and temperature  
<sup>2/</sup> Does not include trace data, original log is provided in Century binary format under the same file name with extension ".log"



Lithology and borehole geophysical logs for well 14FF39 (Rhodes Jordan Wellfield), Lawrenceville, Georgia.



Structural tadpole plot and BIPS images for well 14FF39 (Rhodes Jordan Wellfield), Lawrenceville, Georgia.