

## WELL SCHEDULE

SITE NAME 14FF18 OTHER IDENTIFIER City Park 14FF18 WELL NUMBER 335732083584301

Latitude 33° 57' 32.62" Longitude -83° 58' 42.65" Ground Elevation 999.3 NGVD 29

OWNER City of Lawrenceville Casing Elevation 1001.09 NGVD 29

## WELL CONSTRUCTION DESCRIPTION

Name of Aquifer: metamorphic - crystalline rock

## TYPE OF DRILLING

Rotary Total Depth 180  
 Percussion Static Water Level (bls)  
 Bored varies because of  
pumping in wellfield

## DRILL HOLE DIAMETER

Size 12 in, from 0 ft to 24 ft  
Size 6 in, from 24 ft to 180 ft  
Size \_\_\_\_\_ in, from \_\_\_\_\_ ft to \_\_\_\_\_ ft

## CASING RECORD

Type material \_\_\_\_\_  
Size 6 in, from 0 ft to 24 ft  
Size \_\_\_\_\_ in, from \_\_\_\_\_ ft to \_\_\_\_\_ ft  
Size \_\_\_\_\_ in, from \_\_\_\_\_ ft to \_\_\_\_\_ ft

## WELL SCREEN

Type material \_\_\_\_\_ open hole steel  
Size \_\_\_\_\_ in, from \_\_\_\_\_ ft to \_\_\_\_\_ ft  
Size \_\_\_\_\_ in, from \_\_\_\_\_ ft to \_\_\_\_\_ ft  
Size \_\_\_\_\_ in, from \_\_\_\_\_ ft to \_\_\_\_\_ ft

Date drilled 11/8/1990

Driller Va. Supply and Well Co.

GROUTING  YES  NO

Type cement grout

From 0 ft to 24 ft

From \_\_\_\_\_ ft to \_\_\_\_\_ ft

From \_\_\_\_\_ ft to \_\_\_\_\_ ft

## TEST PUMP DATA

Pumped  Bailed \_\_\_\_\_

Estimated 100 (air-lift yield)

Date tested \_\_\_\_\_

Pump rated \_\_\_\_\_ gal/min \_\_\_\_\_ HP

Test yield \_\_\_\_\_ gal/min After \_\_\_\_\_ hrs

Water level before test \_\_\_\_\_ ft btoc

Drawdown \_\_\_\_\_ ft

Specific Capacity \_\_\_\_\_ gal/min/ft

Altitudes are in reference to NGVD 29

Latitude/longitude in NAD 83

Depths are in feet below land surface (bls)

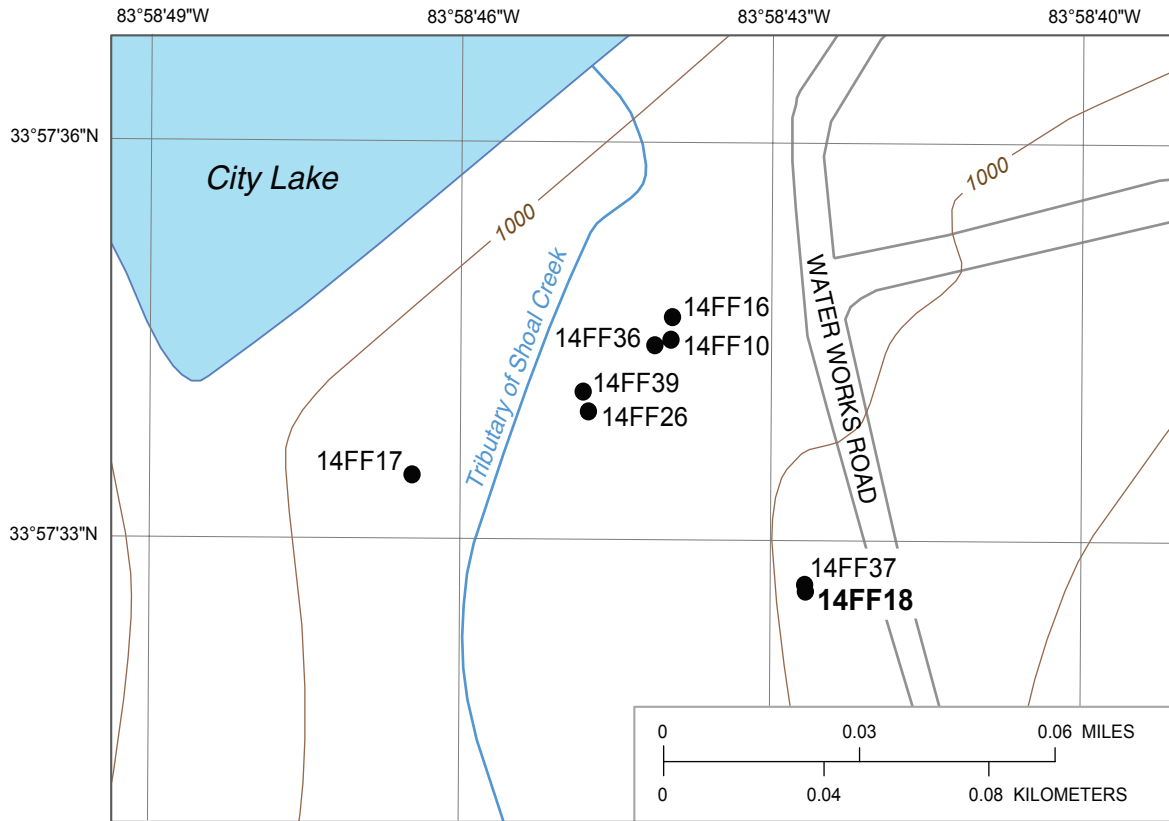
Feet below top of casing (ft btoc)

Comments: Drilled as part of the Special Environmental Services' evaluation of the Rhodes Jordan Wellfield

refurbishment; well used for monitoring a pumping test; from geophysical logging: openings at

30.5-32.5', 51-52' (these dewatered during sustained pumping); major water-producing

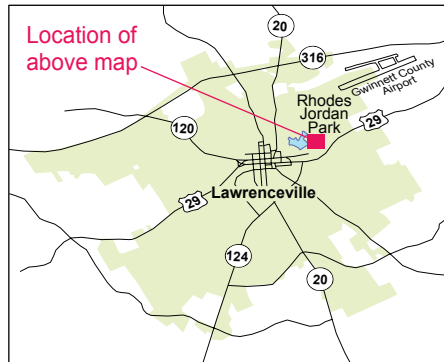
fractures at 105.5-106', 149.5-151'



Base from U.S. Geological Survey 1:24,000-scale, Luxomni Roads from City of Lawrenceville 1999 digital data

**EXPLANATION**

● **14FF18** Observation well and site name

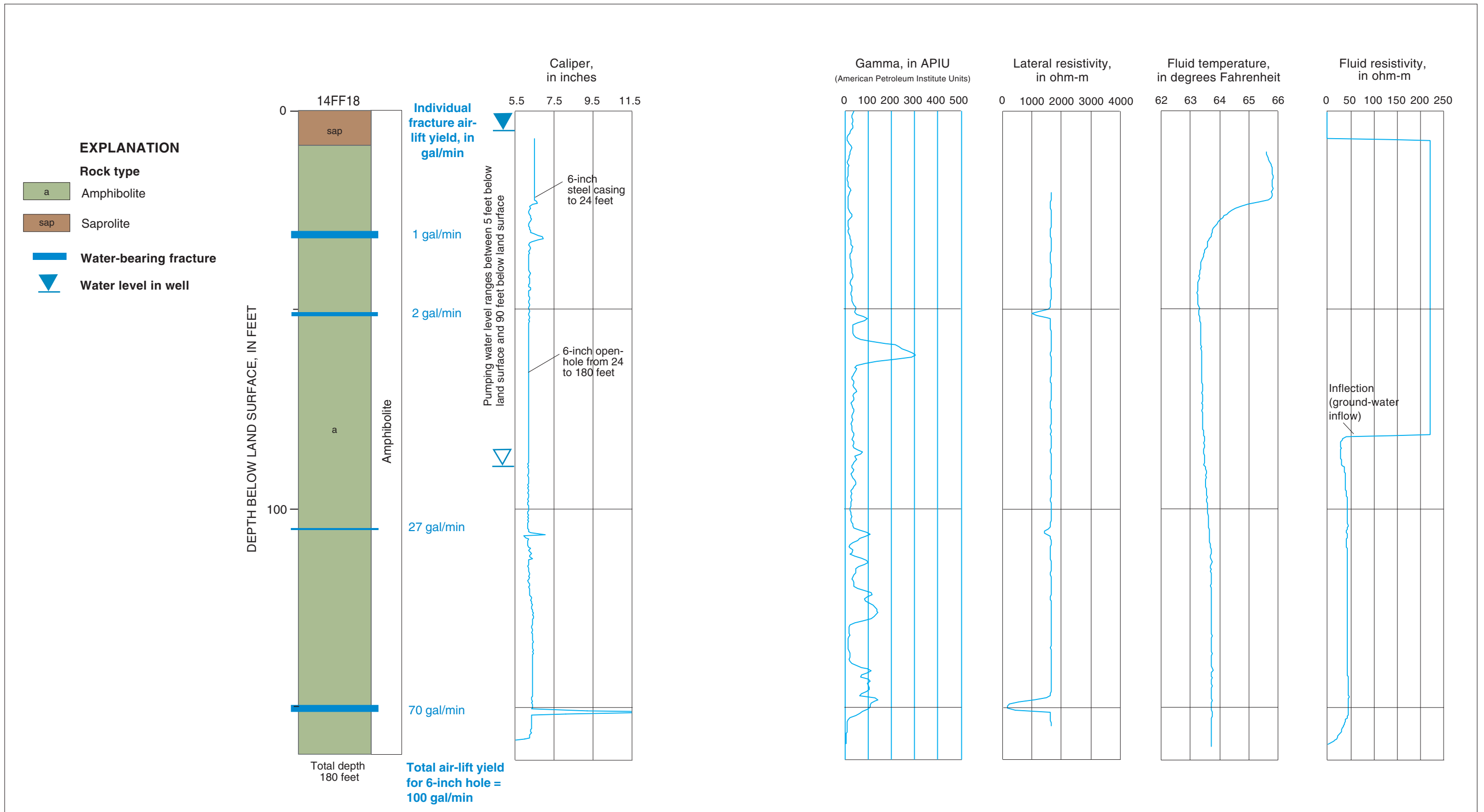


Geophysical log files for well 14FF18 [contained on CD in Supplemental\_data\log\_archive\logs.zip; ft bls, feet below land surface]

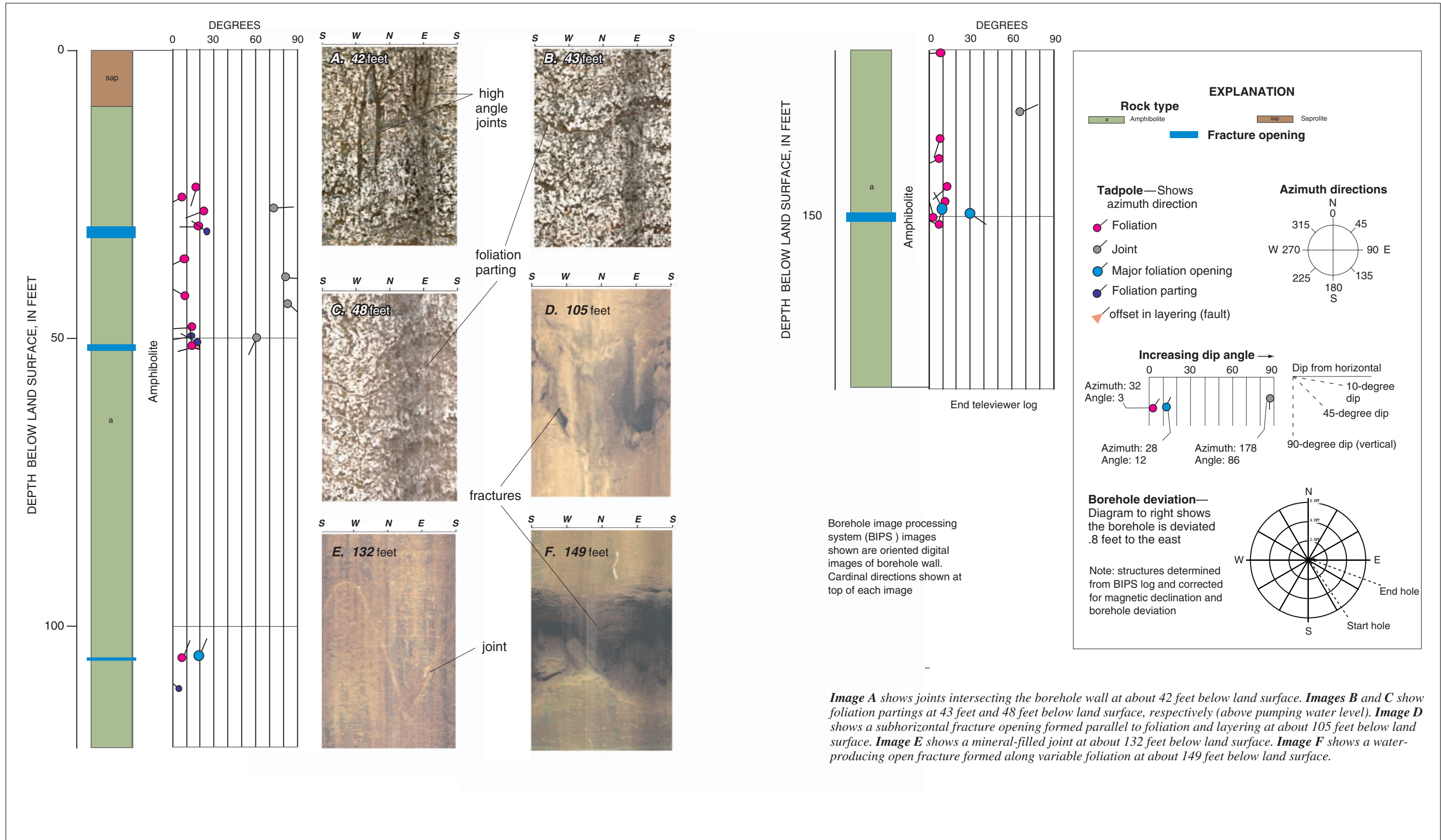
| File name            | Type                            | Date    | Start depth (ft bls) | Stop depth (ft bls) |
|----------------------|---------------------------------|---------|----------------------|---------------------|
| 14FF18.19980608.ZE01 | Combination Tool <sup>1</sup>   | 6/8/98  | 0.7                  | 158                 |
| 14FF18.19980610.ZE01 | Combination Tool <sup>1</sup>   | 6/10/98 | 0                    | 158.1               |
| 14FF18.19980810.AT01 | Acoustic Televiwer <sup>2</sup> | 8/10/98 | 71                   | 112.75              |
| 14FF18.19941205.AV01 | Acoustic Velocity               | 12/5/94 | 20                   | 152                 |
| 14FF18.19941205.CT01 | Caliper, Three Arm              | 12/5/94 | 6.5                  | 157.7               |
| 14FF18.19980608.CT01 | Caliper, Three Arm              | 6/8/98  | 5.9                  | 158.4               |
| 14FF18.19980610.CT01 | Caliper, Three Arm              | 6/10/98 | 4.5                  | 158.7               |
| 14FF18.19941205.FR01 | Fluid Resistivity               | 12/5/94 | 21                   | 158.5               |
| 14FF18.19941205.FT01 | Fluid Temperature               | 12/5/94 | 10                   | 159                 |
| 14FF18.19941205.EF01 | Focused Resistivity             | 12/5/94 | 20                   | 154                 |
| 14FF18.19941205.NG01 | Gamma                           | 12/5/94 | 0                    | 158                 |
| 14FF18.19980608.ZI01 | Gamma and EM Induction          | 6/8/98  | 1.1                  | 155.8               |
| 14FF18.19980610.ZI01 | Gamma and EM Induction          | 6/10/98 | -0.2                 | 155.7               |
| 14FF18.19941205.EL01 | Long-normal Resistivity         | 12/5/94 | 23                   | 159                 |
| 14FF18.19941205.ES01 | Short-normal Resistivity        | 12/5/94 | 23                   | 159                 |
| 14FF18.19941205.EP01 | Spontaneous Potential           | 12/5/94 | 23                   | 159                 |

<sup>1/</sup> Includes gamma, long/short normal resistivity, spontaneous potential, single-point resistance, fluid resistivity, and temperature

<sup>2/</sup> Does not include trace data, original log is provided in Century binary format under the same file name with extension ".log"



Lithology and borehole geophysical logs for well 14FF18 (Rhodes Jordan Wellfield), Lawrenceville, Georgia.



Structural tadpole plot and BIPS images for well 14FF18 (Rhodes Jordan Wellfield), Lawrenceville, Georgia.