

WELL SCHEDULE

SITE NAME 14FF10 OTHER IDENTIFIER City Park 14FF10 WELL NUMBER 335735083584501

Latitude \_\_\_\_\_ Longitude \_\_\_\_\_ Ground Elevation 994.2 NGVD 29  
 OWNER City of Lawrenceville Casing Elevation 996.09 NGVD 29

WELL CONSTRUCTION DESCRIPTION

Name of Aquifer: metamorphic - crystalline rock

TYPE OF DRILLING

Rotary Total Depth 386  
(blocked at 177 ft)  
 Percussion Static Water Level (bls)  
 Bored \_\_\_\_\_

DRILL HOLE DIAMETER

Size \_\_\_\_\_ in, from 0 ft to 20 ft  
 Size 6 in, from 20 ft to 177 ft  
 Size \_\_\_\_\_ in, from \_\_\_\_\_ ft to \_\_\_\_\_ ft

CASING RECORD

Type material steel  
 Size 8 in, from 0 ft to 20 ft  
 Size \_\_\_\_\_ in, from \_\_\_\_\_ ft to \_\_\_\_\_ ft  
 Size \_\_\_\_\_ in, from \_\_\_\_\_ ft to \_\_\_\_\_ ft

WELL SCREEN

Type material open hole  
 Size \_\_\_\_\_ in, from \_\_\_\_\_ ft to \_\_\_\_\_ ft  
 Size \_\_\_\_\_ in, from \_\_\_\_\_ ft to \_\_\_\_\_ ft  
 Size \_\_\_\_\_ in, from \_\_\_\_\_ ft to \_\_\_\_\_ ft

Date drilled 1912

Driller \_\_\_\_\_

GROUTING  YES  NO

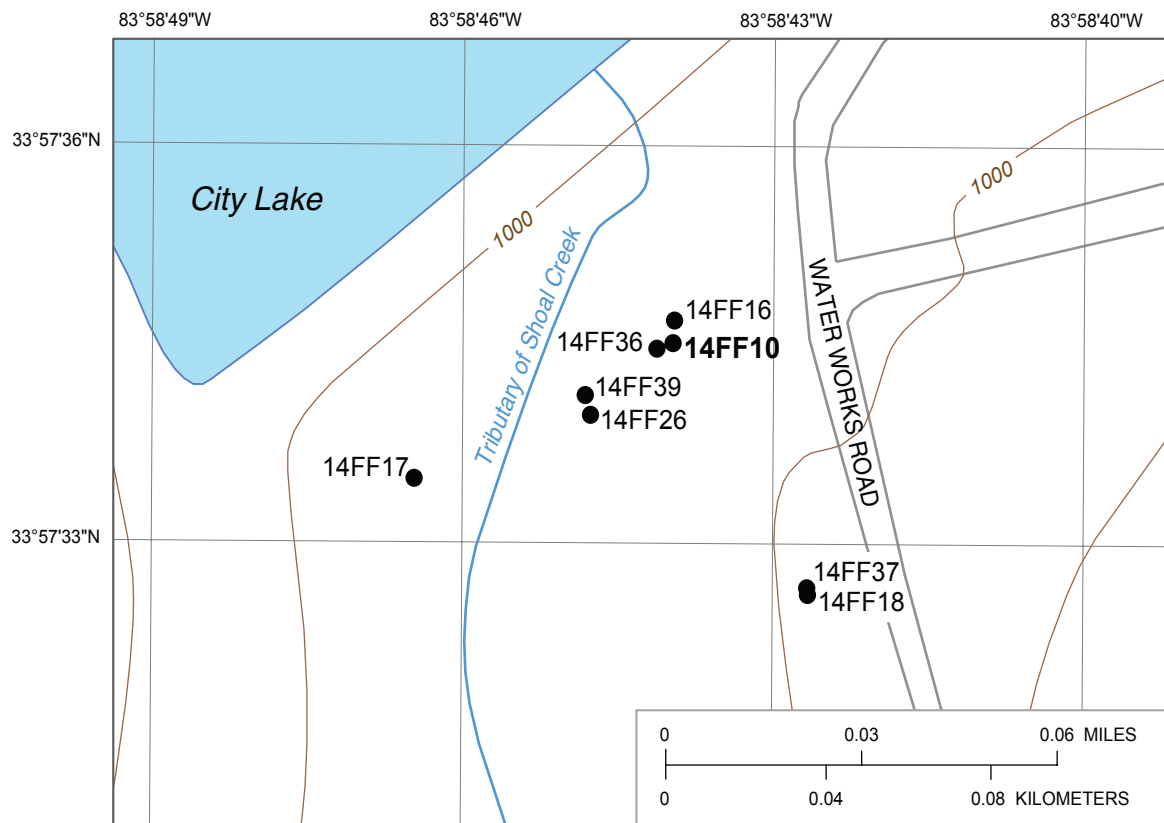
Type grout  
 From 0 ft to 20 ft  
 From \_\_\_\_\_ ft to \_\_\_\_\_ ft  
 From \_\_\_\_\_ ft to \_\_\_\_\_ ft

TEST PUMP DATA

Pumped  Bailed \_\_\_\_\_  
 Estimated \_\_\_\_\_  
 Date tested \_\_\_\_\_  
 Pump rated \_\_\_\_\_ gal/min \_\_\_\_\_ HP  
 Test yield 270 gal/min After \_\_\_\_\_ hrs  
 Water level before test \_\_\_\_\_ ft btoc  
 Drawdown \_\_\_\_\_ ft  
 Specific Capacity \_\_\_\_\_ gal/min/ft

Pumping records between 1995 and 2001 indicate a long-term sustainable yield of about 100 gal/min  
 Altitudes are in reference to NGVD 29  
 Latitude/longitude in NAD 83  
 Depths are in feet below land surface (bls)  
 Feet below top of casing (ft btoc)

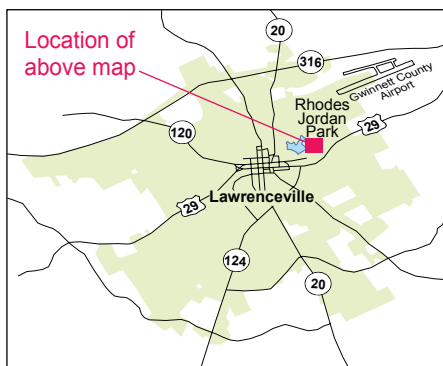
Comments: Historic public-supply well (used in Rhodes Jordan Wellfield since 1995); some data obtained from USGS well records; this well is pumped as an alternate to 14FF16;  
from logging: openings at 24-30', 37-39', 88-89.5' (these are dewatered during sustained pumping);  
major water-producing fractures at 107-108', 129-131', 175.5-178'



Base from U.S. Geological Survey 1:24,000-scale, Luxomni Roads from City of Lawrenceville 1999 digital data

**EXPLANATION**

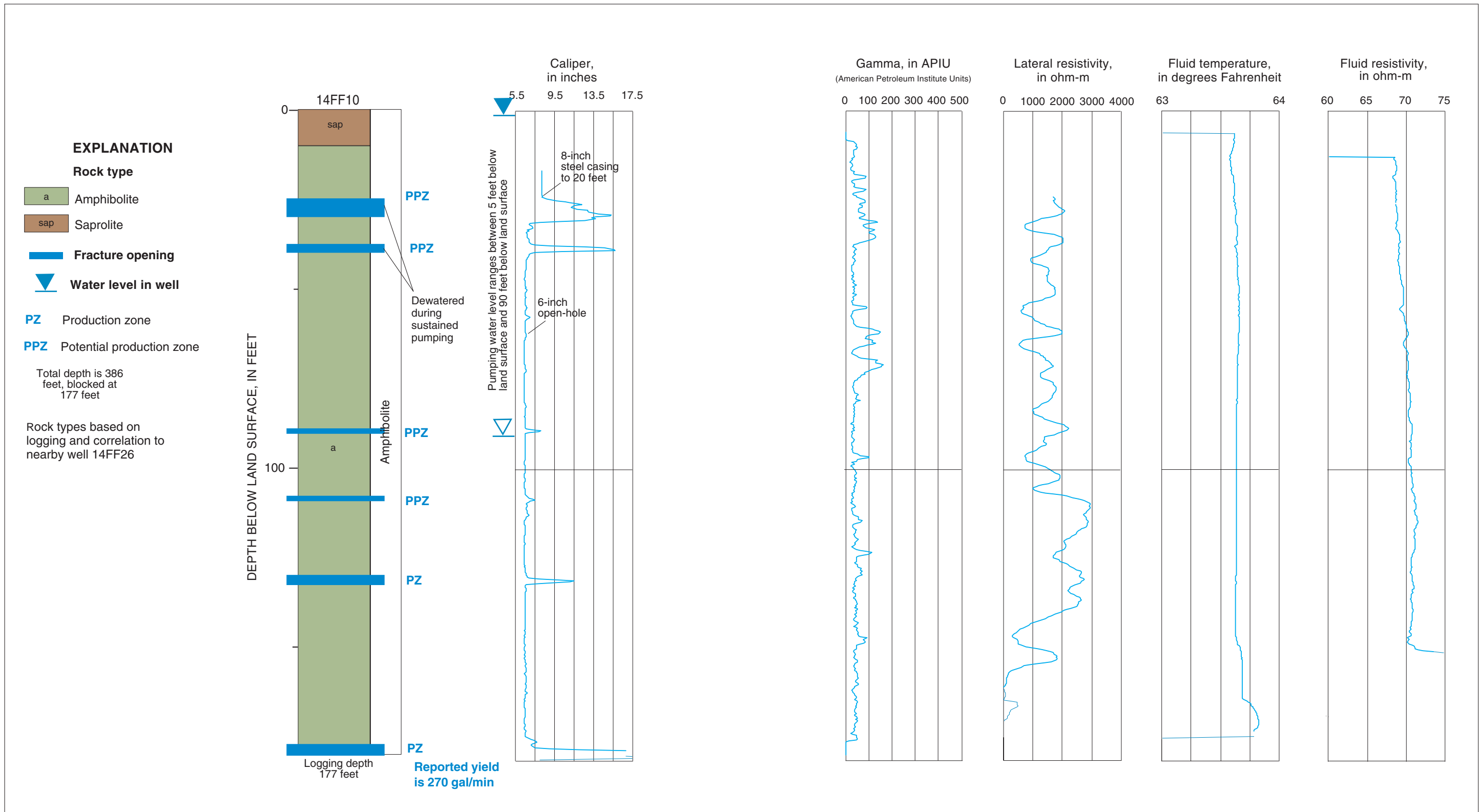
- **14FF10** Observation well and site name



Geophysical log files for well 14FF10 [contained on CD in Supplemental\_data\log\_archive\logs.zip; ft bls, feet below land surface]

File name	Type	Date	Start depth (ft bls)	Stop depth (ft bls)
14FF10.19941011.ZE01	Combination Tool <sup>1/</sup>	10/11/1994	5.600	178.600
14FF10.19941011.CT01	Caliper, Three Arm	10/11/1994	5.600	178.600

<sup>1/</sup> Includes gamma, long/short normal resistivity, spontaneous potential, single-point resistance, fluid resistivity, and temperature



Lithology and borehole geophysical logs for well 14FF10 (Rhodes Jordan Wellfield), Lawrenceville, Georgia.