

WELL SCHEDULE

SITE NAME 13FF16 OTHER IDENTIFIER Hurricane Shoals Road WELL NUMBER 335743084003901Latitude 33° 57' 44.97" Longitude -84° 0' 39.10" Ground Elevation 1004.7 NGVD 29OWNER City of Lawrenceville Casing Elevation 1006.32 NGVD 29

WELL CONSTRUCTION DESCRIPTION

Name of Aquifer: metamorphic - crystalline rock

TYPE OF DRILLING

 Rotary Total Depth 605 Percussion Static Water Level (bls) Bored 8.2 @10/31/2001 11:10

DRILL HOLE DIAMETER

Size 14 in, from 0 ft to 32 ftSize 10 in, from 32 ft to 252 ftSize 6 in, from 252 ft to 605 ft

CASING RECORD

Type material steelSize 10 in, from 0 ft to 32 ftSize in, from ft to ftSize in, from ft to ft

WELL SCREEN

Type material open holeSize in, from ft to ftSize in, from ft to ftSize in, from ft to ftDate drilled 7/2/1999Driller Middle Ga Water SystemsGROUTING YES NOType portland type IFrom 0 ft to 32 ftFrom ft to ftFrom ft to ft

TEST PUMP DATA

Pumped Bailed Estimated 75Date tested 2/1/2000 2/2/2000Pump rated gal/min HPTest yield 75.0 gal/min After 24 hrsWater level before test 15.45 ft btocDrawdown 123.52 ftSpecific Capacity 0.6 gal/min/ft

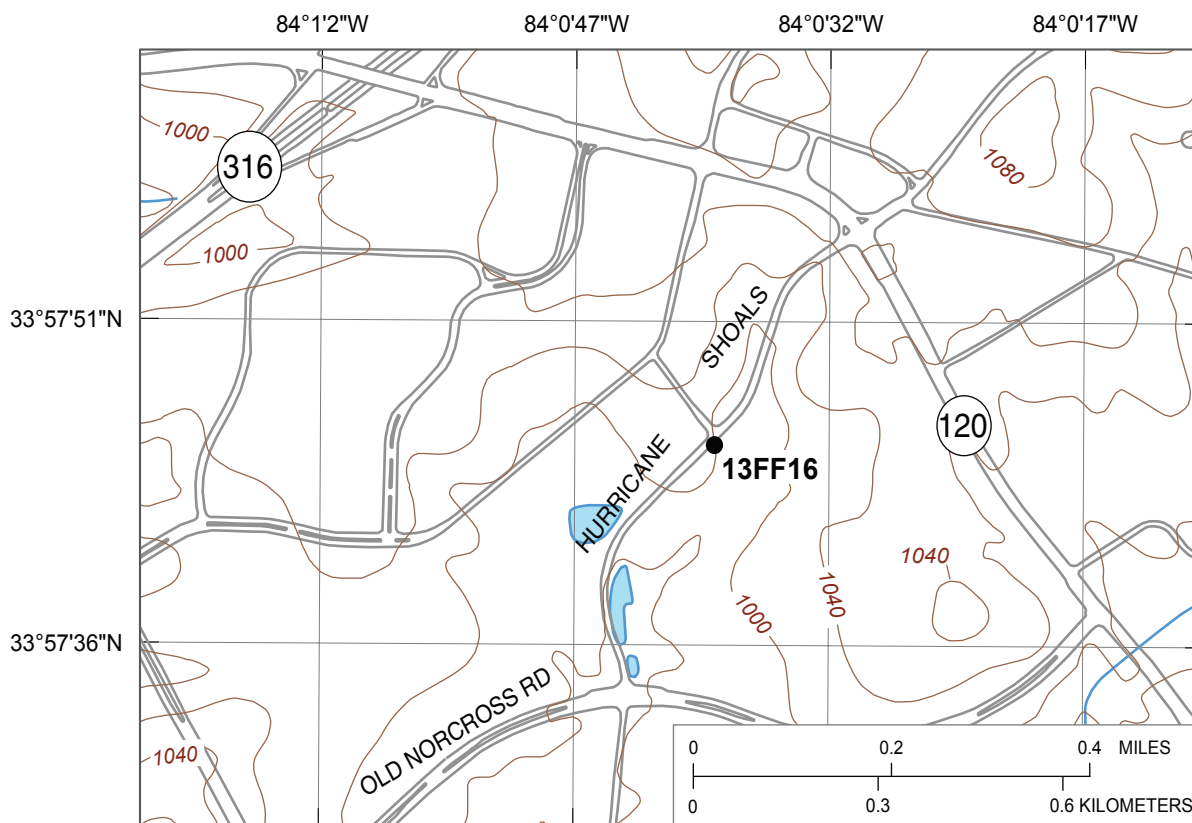
Altitudes are in reference to NGVD 29

Latitude/longitude in NAD 83

Depths are in feet below land surface (bls)

Feet below top of casing (ft btoc)

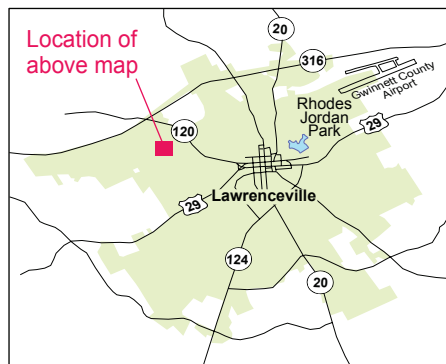
Comments: Major water-bearing fracture at 179.5 - 180.5 feet; test hole drilled 7/2/99 and logged byM.J. Chapman; after reaming hole and setting permanent casing air-lift yield approx. 75 gal/min



Base from U.S. Geological Survey 1:24,000-scale, Luxomni Roads from City of Lawrenceville 1999 digital data

EXPLANATION

13FF16 ● Observation well and site name

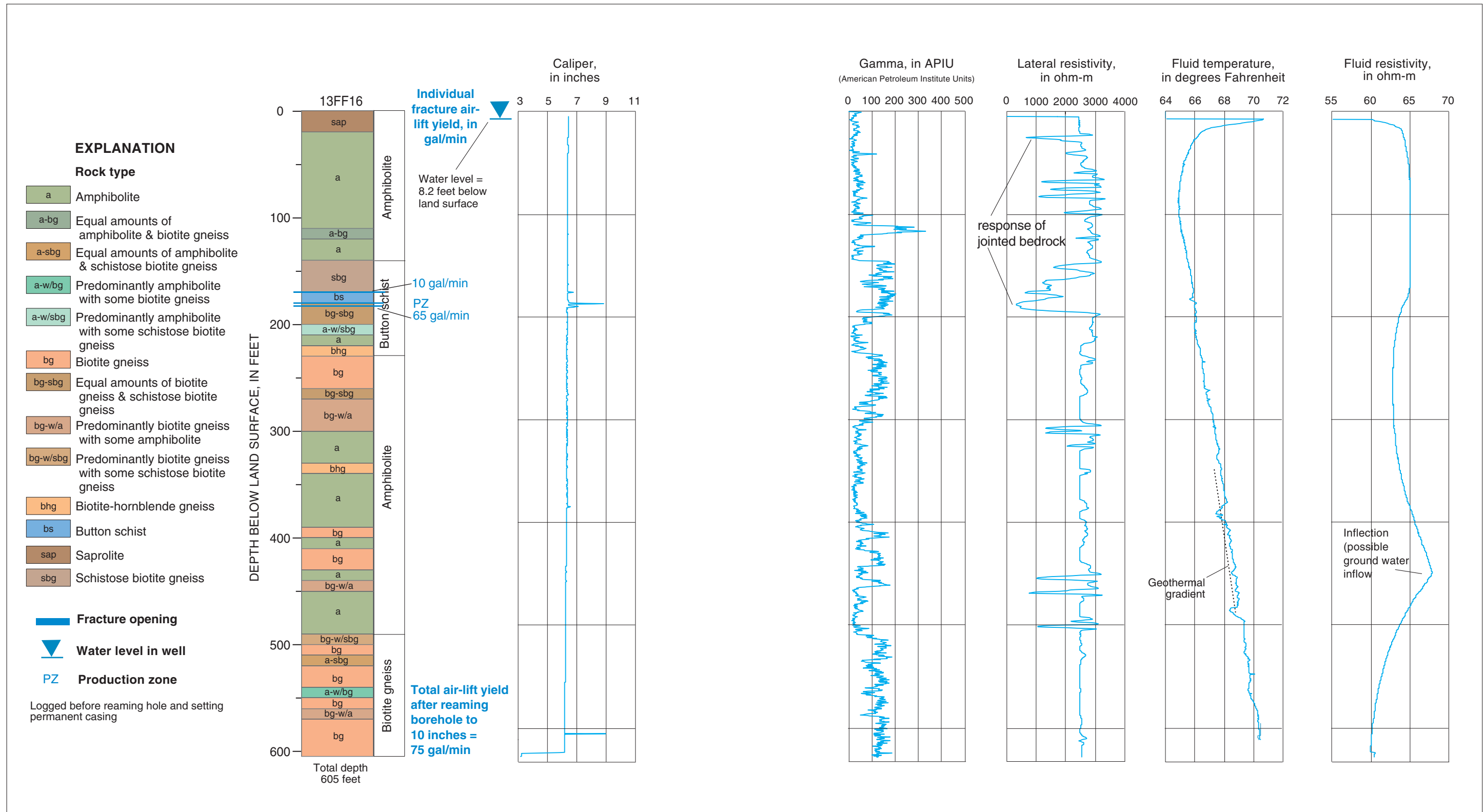


Geophysical log files for well 13FF16 [contained on CD in Supplemental_data\log_archive\logs.zip; ft bls, feet below land surface]

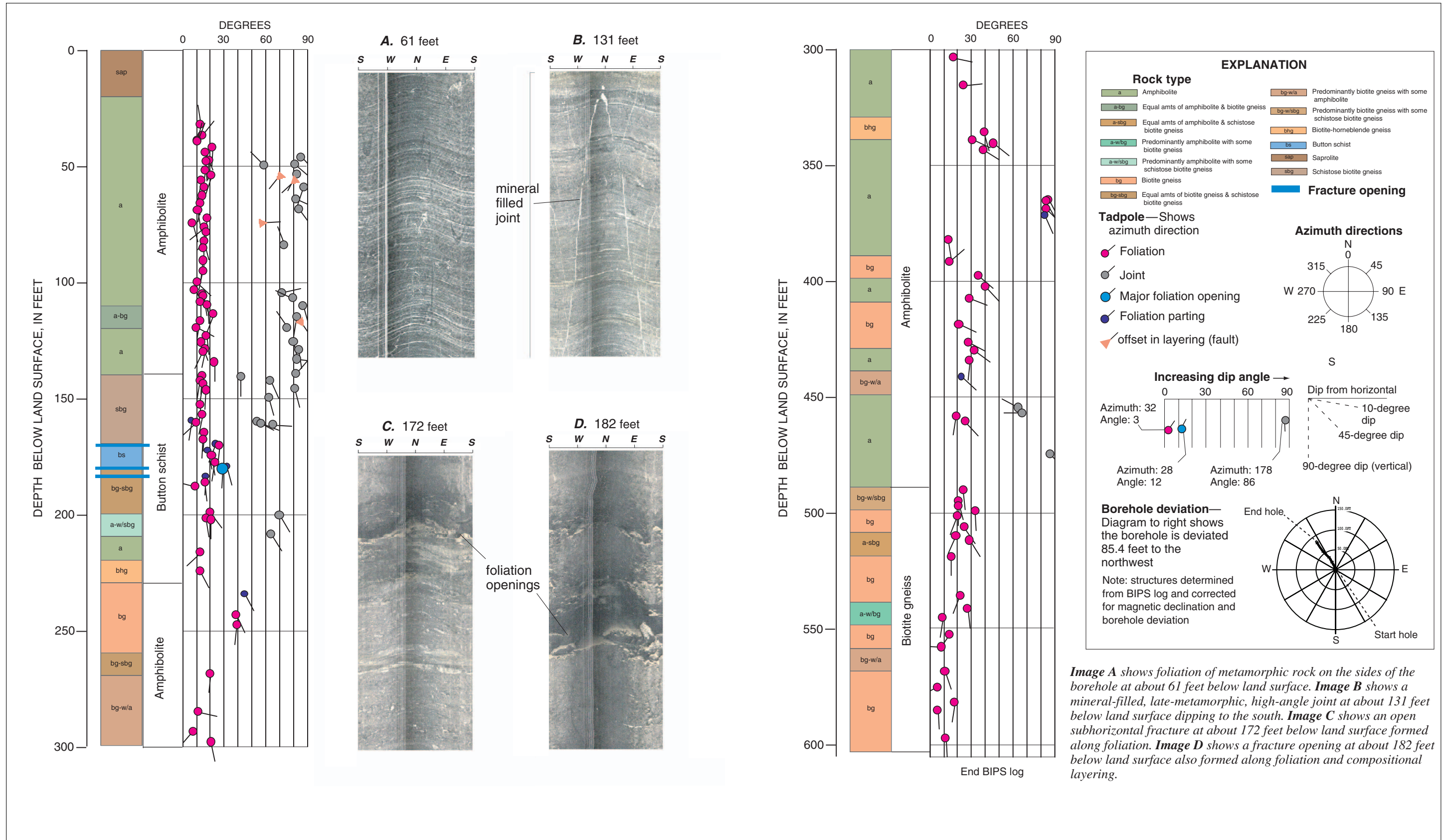
File name	Type	Date	Start depth (ft bls)	Stop depth (ft bls)
13FF16.19990707.ZE01	Combination Tool ¹	07/07/99	0.3	605
13FF16.19990816.AT01	Acoustic Televiwer ²	08/16/99	22.65	605
13FF16.20000501.CT01	Caliper, Three Arm	05/01/00	3	605
13FF16.19990707.CT01	Caliper, Three Arm	07/07/99	4.7	605

^{1/} Includes gamma, long/short normal resistivity, spontaneous potential, single-point resistance, fluid resistivity, and temperature

^{2/} Does not include trace data, original log is provided in Century binary format under the same file name with extension ".log"



Lithology and borehole geophysical logs for well 13FF16 (Hurricane Shoals well), Lawrenceville, Georgia.



Structural tadpole plot and BIPS images for well 13FF16 (Hurricane Shoals well), Lawrenceville, Georgia.