

## WELL SCHEDULE

SITE NAME 13FF15 OTHER IDENTIFIER Walther Road WELL NUMBER 335814084002601  
 Latitude 33° 58' 12.01" Longitude -84° 0' 24.10" Ground Elevation 1053.16 NGVD 29  
 OWNER City of Lawrenceville Casing Elevation 1054.61 NGVD 29

## WELL CONSTRUCTION DESCRIPTION

Name of Aquifer: metamorphic - crystalline rock

## TYPE OF DRILLING

Rotary Total Depth 605  
 Percussion Static Water Level (bls)  
 Bored 54.05 @

10/31/200110:4

## DRILL HOLE DIAMETER

Size 12 in, from 0 ft to 55 ft  
 Size 10 in, from 55 ft to 250 ft  
 Size 6 in, from 250 ft to 605 ft

## CASING RECORD

Type material steel  
 Size 10 in, from 0 ft to 55 ft  
 Size        in, from        ft to        ft  
 Size        in, from        ft to        ft

## WELL SCREEN

Type material open hole  
 Size        in, from        ft to        ft  
 Size        in, from        ft to        ft  
 Size        in, from        ft to        ft

Date drilled 7/2/1999

Driller Middle Ga Water Systems

GROUTING  YES  NO

Type portland cement

From 0 ft to 55 ft

From        ft to        ft

From        ft to        ft

## TEST PUMP DATA

Pumped  Bailed       

Estimated 250 (air-lift yield)

Date tested 11/15/1999 11/19/2001

Pump rated        gal/min        HP

Test yield 177 gal/min After 96 hrs

Water level before test 56.59 ft btoc

Drawdown 153.9 ft

Specific Capacity 1.1 gal/min/ft

Altitudes are in reference to NGVD 29

Latitude/longitude in NAD 83

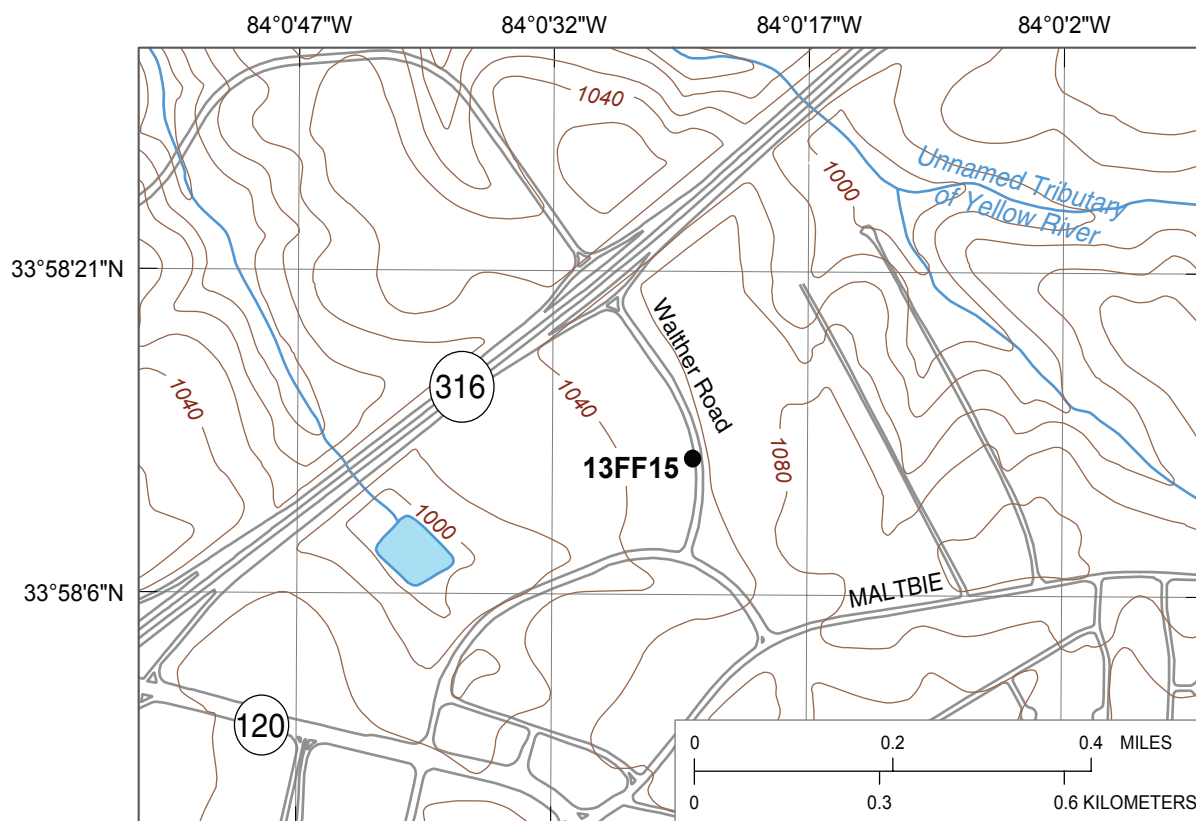
Depths are in feet below land surface (bls)

Feet below top of casing (ft btoc)

Comments: Major water-bearing fracture at 199.5 - 201 feet; test hole drilled 7/2/99 logged by

M. Chapman; after reaming and setting permanent casing air-lift yield 250 gal/min; only about

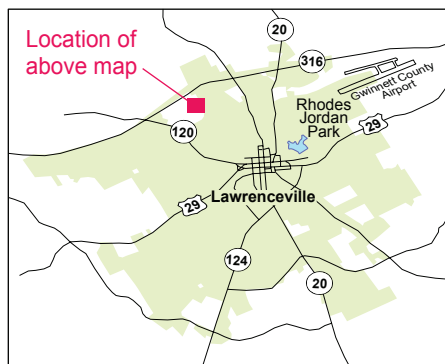
10 gpm combined yield coming from fractures at 115' and 139'



Base from U.S. Geological Survey 1:24,000-scale, Luxomni Roads from City of Lawrenceville 1999 digital data

#### EXPLANATION

**13FF15** ● Observation well and site name

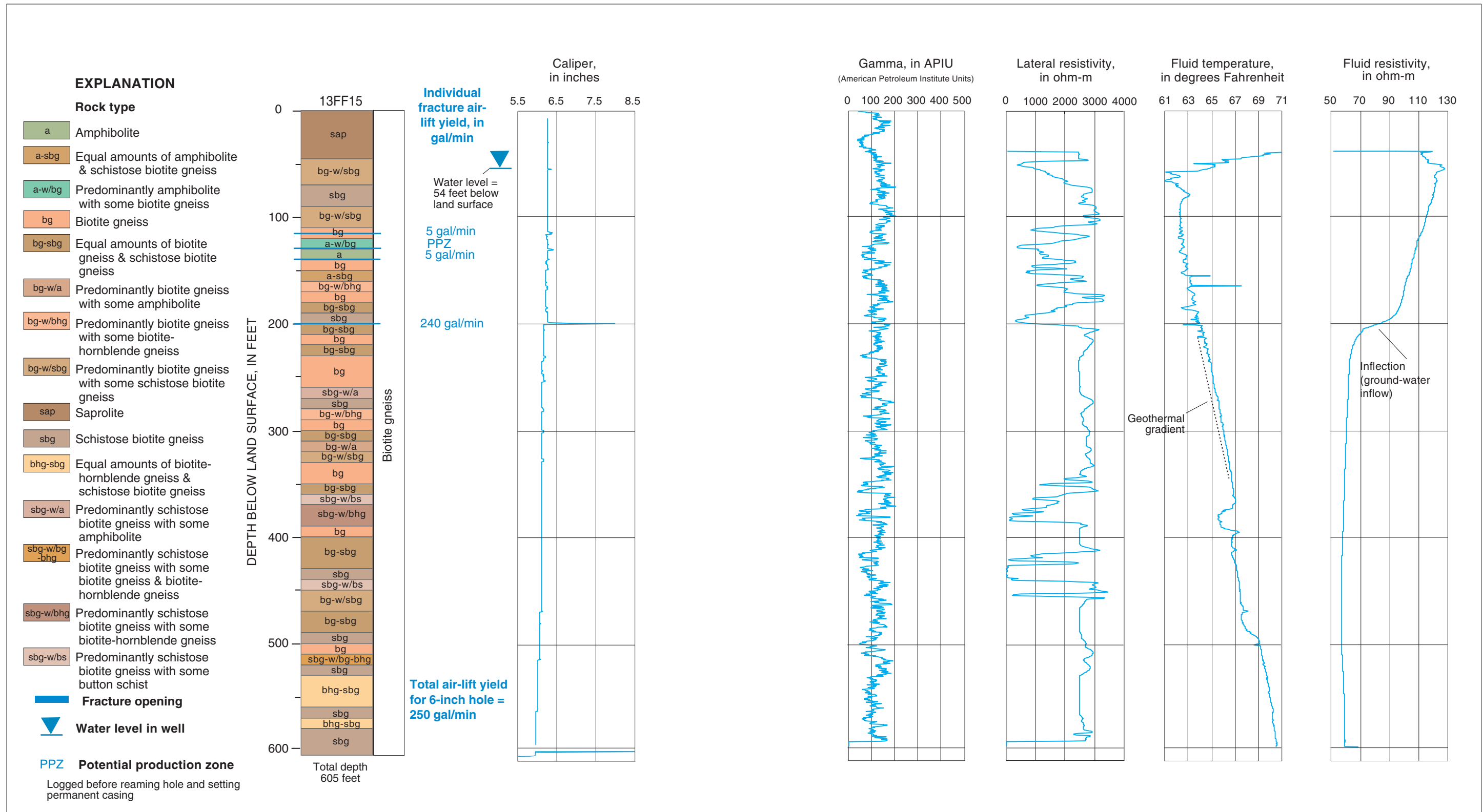


Geophysical log files for well 13FF15 [contained on CD in Supplemental\_data\log\_archive\logs.zip; ft bls, feet below land surface]

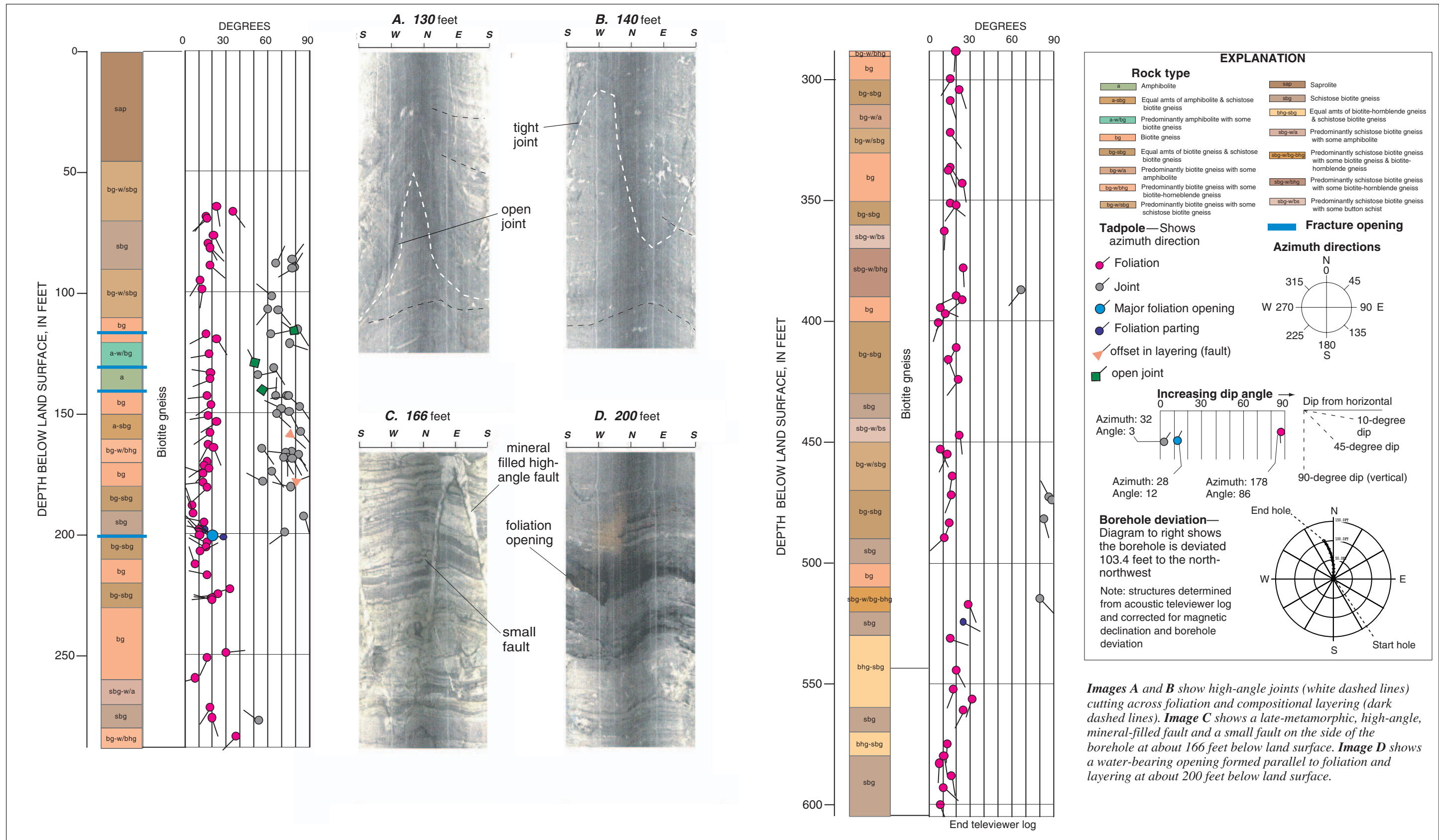
File name	Type	Date	Start depth (ft bls)	Stop depth (ft bls)
13FF15.19990706.ZE02	Combination Tool <sup>1/</sup>	07/06/99	312.1	600.1
13FF15.19990706.ZE01	Combination Tool <sup>1/</sup>	07/06/99	-0.3	600
13FF15.19990806.AT01	Acoustic Televiewer <sup>2/</sup>	08/06/99	45.05	605
13FF15.20000501.CT01	Caliper, Three Arm	05/01/00	14.3	250.6
13FF15.19990706.CT01	Caliper, Three Arm	07/06/99	6.2	605

<sup>1/</sup> Includes gamma, long/short normal resistivity, spontaneous potential, single-point resistance, fluid resistivity, and temperature

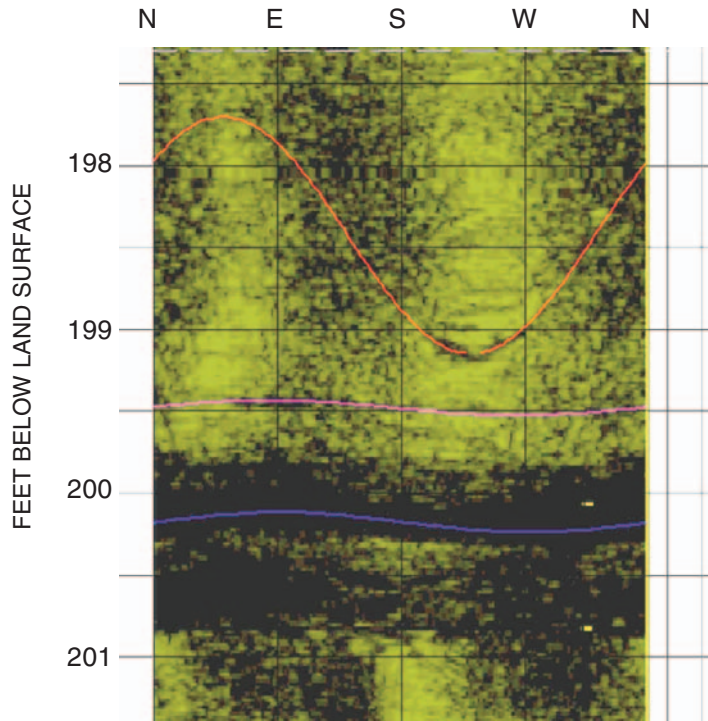
<sup>2/</sup> Does not include trace data, original log is provided in Century binary format under the same file name with extension ".log"



Lithology and borehole geophysical logs for well 13FF15 (Walther Road well), Lawrenceville, Georgia.



Structural tadpole plot and BIPS images for well 13FF15 (Walther Road well), Lawrenceville, Georgia.



Projected acoustic televiwer image of borehole wall from well 13FF15. Red line traces a joint cutting across rock foliation and layering. Purple line traces rock foliation. Blue line traces the center of an opening formed parallel to foliation and compositional layering (dark area is the opening).