

## WELL SCHEDULE

SITE NAME 13FF13 OTHER IDENTIFIER Dogwood WELL NUMBER 335721084002601Latitude 33° 57' 21.06" Longitude -84° 0' 24.96" Ground Elevation 972.3 NGVD 29OWNER City of Lawrenceville Casing Elevation 976.13 NGVD 29

## WELL CONSTRUCTION DESCRIPTION

Name of Aquifer: metamorphic - crystalline rock

## TYPE OF DRILLING

 Rotary Total Depth 448 Percussion Bored

Static Water Level (bls)

6.98 @10/31/2001 8:27:

## DRILL HOLE DIAMETER

Size 8 in, from 0 ft to 19 ftSize 6 in, from 19 ft to 448 ft

Size \_\_\_\_\_ in, from \_\_\_\_\_ ft to \_\_\_\_\_ ft

## CASING RECORD

Type material PVCSize 6 in, from 0 ft to 19 ft

Size \_\_\_\_\_ in, from \_\_\_\_\_ ft to \_\_\_\_\_ ft

Size \_\_\_\_\_ in, from \_\_\_\_\_ ft to \_\_\_\_\_ ft

## WELL SCREEN

Type material open hole

Size \_\_\_\_\_ in, from \_\_\_\_\_ ft to \_\_\_\_\_ ft

Size \_\_\_\_\_ in, from \_\_\_\_\_ ft to \_\_\_\_\_ ft

Size \_\_\_\_\_ in, from \_\_\_\_\_ ft to \_\_\_\_\_ ft

Date drilled January 1998Driller Atlanta Drilling and ExplorationGROUTING  YES  NOType bentoniteFrom 0 ft to 19 ft

From \_\_\_\_\_ ft to \_\_\_\_\_ ft

From \_\_\_\_\_ ft to \_\_\_\_\_ ft

## TEST PUMP DATA

Pumped  Bailed \_\_\_\_\_Estimated 35 (air-lift yield)

Date tested \_\_\_\_\_

Pump rated \_\_\_\_\_ gal/min \_\_\_\_\_ HP

Test yield \_\_\_\_\_ gal/min After \_\_\_\_\_ hrs

Water level before test \_\_\_\_\_ ft btoc

Drawdown \_\_\_\_\_ ft

Specific Capacity \_\_\_\_\_ gal/min/ft

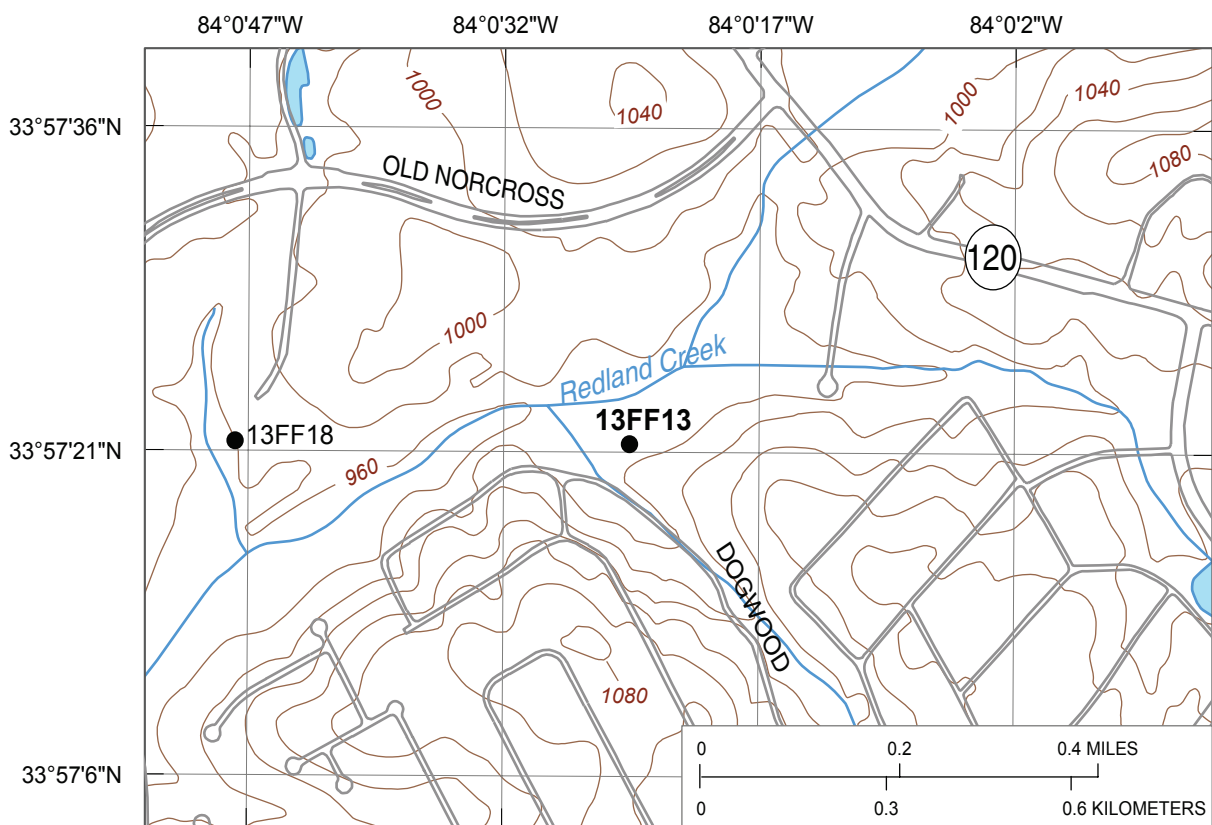
Altitudes are in reference to NGVD 29

Latitude/longitude in NAD 83

Depths are in feet below land surface (bls)

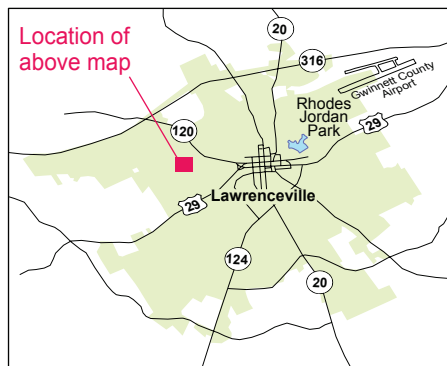
Feet below top of casing (ft btoc)

Comments: Well part of city ground-water exploration effort; drilling oversight by Zuhair F. Rammo of E&CIntegration Services; from geophysical logs, major water-bearing fractures at 87.2-88.2', 380-381.5'



Base from U.S. Geological Survey 1:24,000-scale, Luxomni Roads from City of Lawrenceville 1999 digital data

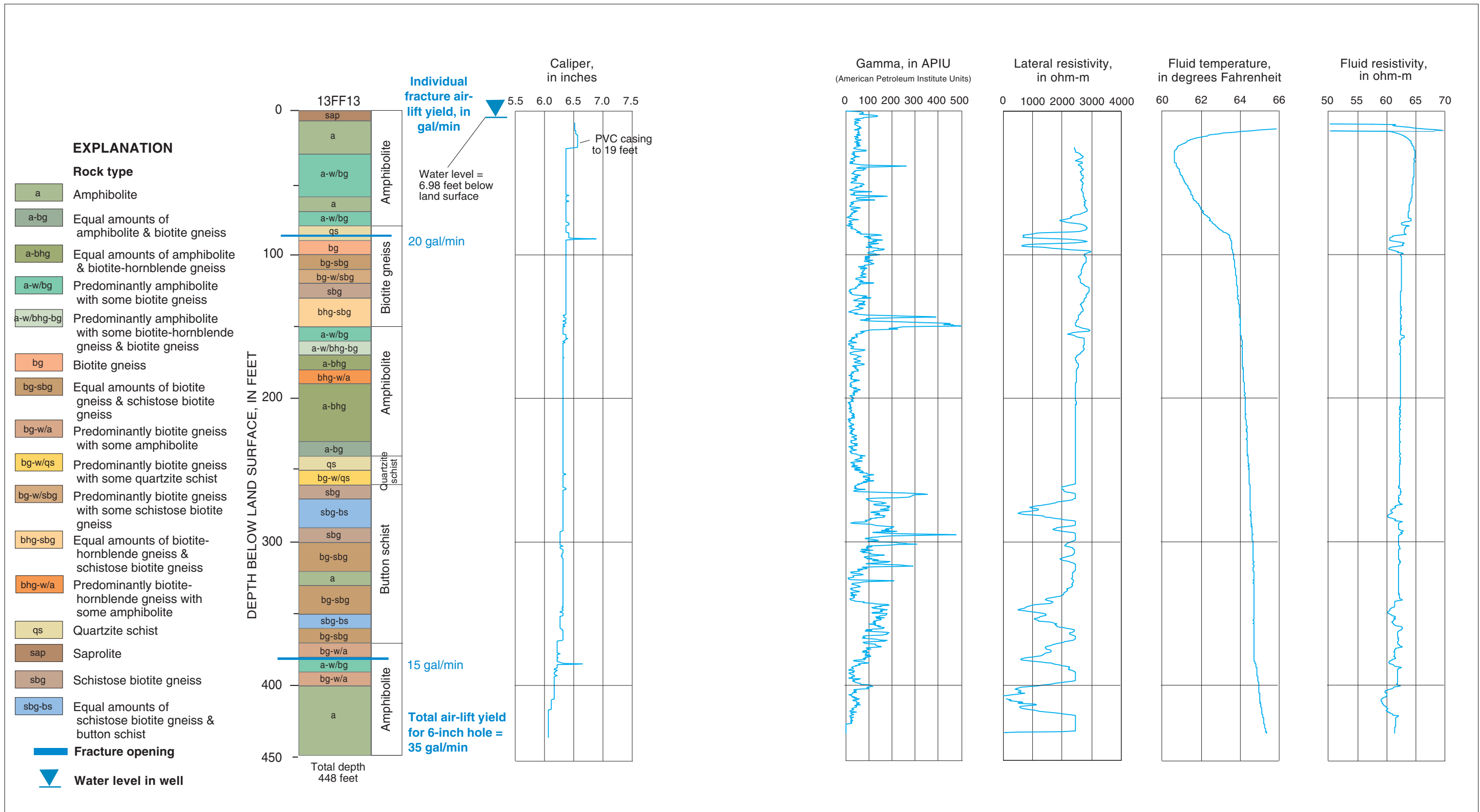
● **13FF13** **EXPLANATION**  
 Observation well and site name



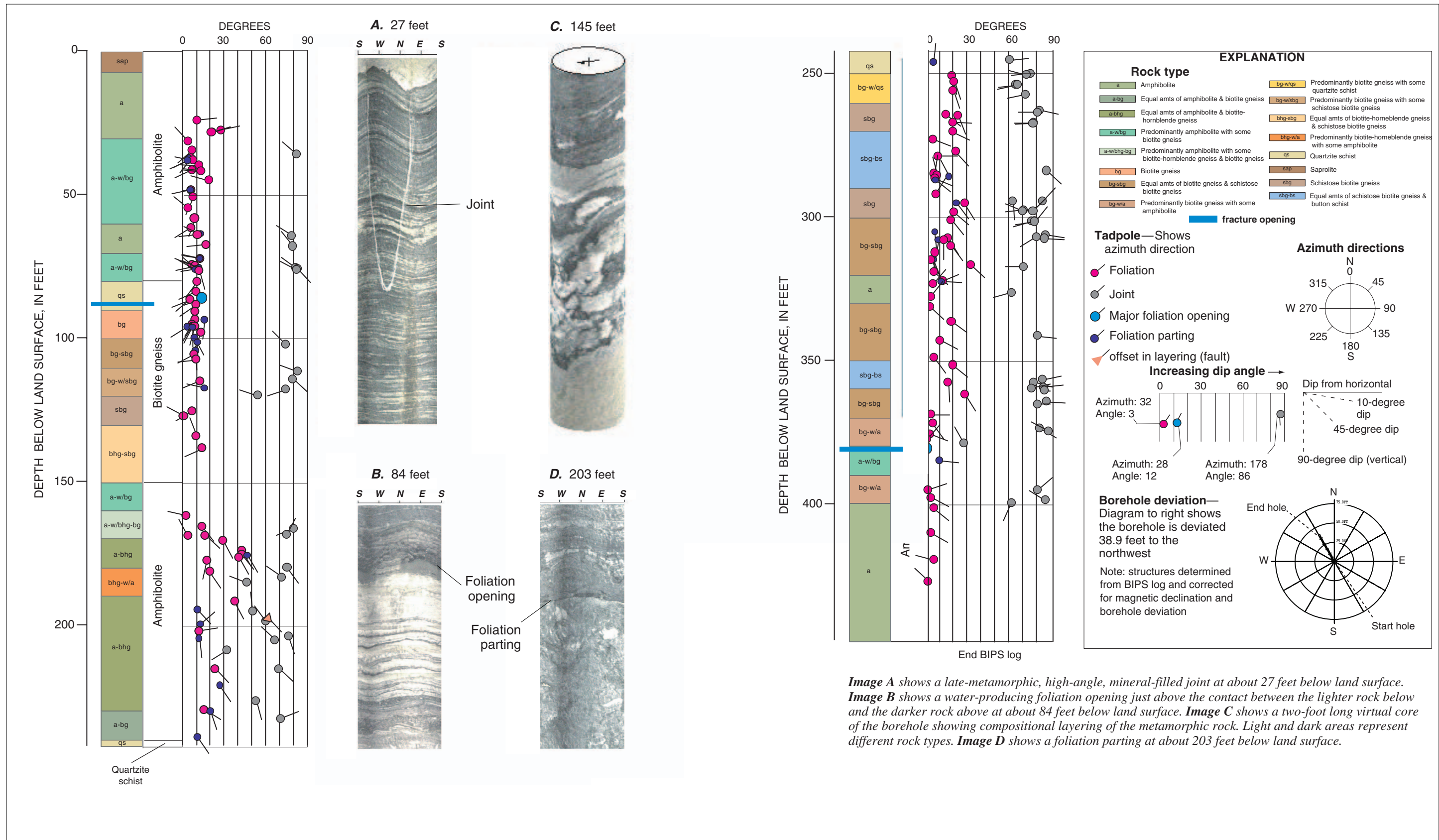
Geophysical log files for well 13FF13 [contained on CD in Supplemental\_data\log\_archive\logs.zip; ft bls, feet below land surface]

File name	Type	Date	Start depth (ft bls)	Stop depth (ft bls)
13FF13.19980702.ZE01	Combination Tool <sup>1/</sup>	07/02/98	-0.9	428.8
13FF13.19980811.AT01	Acoustic Televiwer <sup>2/</sup>	08/11/98	24.14	431.09
13FF13.19980702.CT01	Caliper, Three Arm	07/02/98	7.1	431.8
13FF13.19980702.ZI01	Gamma and EM Induction	07/02/98	5	426.2

<sup>1/</sup> Includes gamma, long/short normal resistivity, spontaneous potential, single-point resistance, fluid resistivity, and temperature  
<sup>2/</sup> Does not include trace data, original log is provided in Century binary format under the same file name with extension ".log"



Lithology and borehole geophysical logs for well 13FF13 (Dogwood Drive well), Lawrenceville, Georgia.



Structural tadpole plot and BIPS images for well 13FF13 (Dogwood Drive well), Lawrenceville, Georgia.