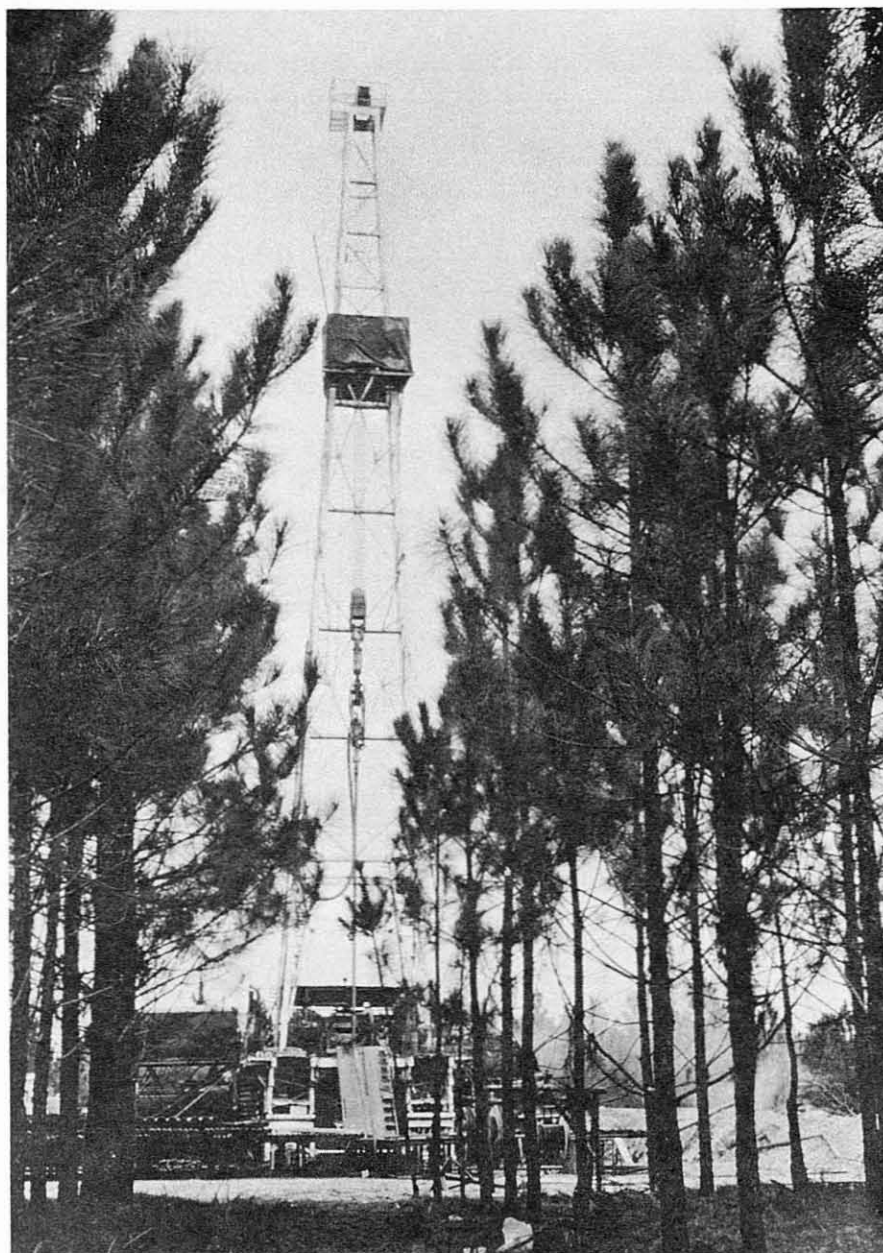


PETROLEUM EXPLORATION IN GEORGIA

Compiled by William E. Marsalis



THE GEOLOGICAL SURVEY OF GEORGIA
DEPARTMENT OF MINES, MINING AND GEOLOGY
JESSE H. AUVIL JR., DIRECTOR

ATLANTA NOVEMBER 1970

DECATUR COUNTY

Operator: H. H. Chapman (Calvary Development Co.)
 Landowner: W. P. Scott No. 1
 Location: 660 ft. N. and 990 ft. E. of S.W. corner
 of L.L. 25, L.D. 22

G.G.S. No. 206 D.P. No. 23
 Elevation: 270 ft. G.L.
 Total Depth: 4200 ft.
 Completed: June 17, 1950

Remarks: Electric log and samples 0-4200 ft.

DECATUR COUNTY

Operator: J. R. Sealy
 Landowner: J. R. Sealy No. 1
 Location: 183 ft. S. and 1677 ft. W. of N.E.
 corner of L.L. 247, L.D. 21

G.G.S. No. 387 D.P. No. 27
 Elevation: 78 ft. D.F.
 Total Depth: 3005 ft.
 Completed: April 17, 1953

Remarks: Lithologic log, gas analysis and samples 1120-3005 ft.

DECATUR COUNTY

Operator: J. R. Sealy
 Landowner: Spindle Top No. 2
 (Ruth Rambeau No. 1)
 Location: 330 ft. S. and 330 ft. W. of N.E.
 corner of L.L. 235, L.D. 21

G.G.S. No. 832 D.P. No. 30
 Elevation: 70 ft. G.L.
 Total Depth: 4005 ft.
 Completed: 1954

Remarks: Electric log and samples 990-3394 ft. This well was re-
 entered in 1954 and renamed Spindle Top No. 2.

DECATUR COUNTY

Operator: Renwar Oil Co.
 Landowner: G. E. Dollar No. 1
 Location: 1183 ft. S. and 1183 ft. E. of N.W.
 corner of L.L. 111, L.D. 15

G.G.S. No. 540 D.P. No. 52
 Elevation: 124 ft. G.L.
 Total Depth: 5000 ft.
 Completed: April 7, 1957

Remarks: Electric log and samples 0-2180 ft.

DOOLY COUNTY

Operator: Merica Oil Co.
 Landowner: B. F. Hill No. 1
 Location: 330 ft. N. and 330 ft. W. of S.E. corner
 of L.L. 74, L.D. 1

G.G.S. No. D.P. No. 38
 Elevation: 371 ft. D.F.
 Total Depth: 2319 ft.
 Completed: July 3, 1954

Description	Depth
No samples	0- 100
In Paleocene	100- 510

U. Cretaceous	510-1730
U. Cretaceous (Eutaw Fm.)	655- 940
U. Cretaceous (Tuscaloosa Fm.)	940-1730
L. Cretaceous (Comanche series)	1730-2300
No samples	2300-2317
In Basement complex	2317-2319

Remarks: Electric log and lithologic log. Formational tops by Mrs. Katherine H. Keene.

DOOLY COUNTY

Operator: Georgia-Florida Drilling Co.	G.G.S. No. 619 D.P. No. 57
Landowner: H. E. Walton No. 1	Elevation: 443 ft. D.F.
Location: 811 ft. S. and 1333 ft. W. of N.E. corner of L.L. 163, L.D. 6; 9 mi. E.S.E. of Vienna, Ga.	Total Depth: 3748 ft. Complectec: June 3, 1960

Description	Depth
Miocene	0- 110
No samples	110- 640
In L. Eocene (Wilcox Gp.)	640- 724
Paleocene (Clayton Fm.)	724- 827
U. Cretaceous (post-Eutaw)	827-2138
U. Cretaceous (Eutaw Fm.)	2138-2210
U. Cretaceous (Tuscaloosa Fm.)	2210-2952
L. Cretaceous ? (Comanche series)	2952-3512
Basement complex	3512-3748

Remarks: Electric log, neutron log, petrographic analysis of core material from 3740-3748 ft. and samples 0-3748 ft. Formational tops by Dr. S. M. Herrick.

DOUGHERTY COUNTY

Operator: J. R. Sealy	G. G. S. No. 11 D. P. No.
Landowner: Reynolds Lumber Co. No. 1	Elevation: 197 ft. G. L.
Location: 330 ft. N. and 330 ft. W. of S.E. corner of L.L. 116, L.D.2	Total Depth: 5012 ft. Completed: March 24, 1942

Description	Depth
No samples	0- 280
In M. Eocene (Tallahatta Fm.)	280- 465
L. Eocene (Wilcox Gp.)	465- 558
No samples	558- 575
In Paleocene (Clayton Fm.)	575- 770
U. Cretaceous (Providence Sd. & Ripley Fm.)	770-1100
U. Cretaceous (Cusseta Sd. & Blufftown Fm.)	1100-2365