



YOUNGQUIST BROTHERS, Inc
GEOPHYSICAL LOGGING DIVISION

FLUID CONDUCTIVITY TEMPERATURE LOG

RECEIVED - D.S.P.
APR 15 2008
SOUTH DISTRICT
GOLDEN GATE

Company **ARCADIS**
Well **IW-1**
Field **GOLDEN GATE**
County **COLLIER**
State **FL**

Company **ARCADIS**
Well **IW-1**
Field **GOLDEN GATE**
County **COLLIER**
State **FLORIDA**

Location	Permanent Datum	Elevation	Other Services SEE COMMENTS
	Log Measured From	GL	
	Drilling Measured From	GL	

Date	5-APRIL-2008		
Run Number	TWO		
Depth Driller	1634'		
Depth Logger	1635'		
Bottom Logged Interval	1635'		
Top Log Interval	CASING		
Open Hole Size	12.25"		
Type Fluid	WATER		
Density / Viscosity	NA		
Max Recorded Temp.	NA		
Estimated Cement Top	NA		
Time Well Ready	0100		
Time Logger on Bottom	0130		
Equipment Number	103		
Location	FT. MYERS		
Recorded By	CATHEY		
Witnessed By	L. KWAPINSKI		
	Borehole Record		P. NOLAN
Run Number	Bit	From	To
ONE	46.5"	SURFACE	494'
TWO	12.25"	CASING	1634'
	Size	Wd/Ft	Top
Casing Record	48"	375' W.T.	SURFACE
Surface String	36"	375' W.T.	SURFACE
Prod. String			54'
Production String			490'
Liner			

<<< Fold Here >>>

All interpretations are opinions based on inferences from electrical or other measurements and we cannot and do not guarantee the accuracy or correctness of any interpretation, and we shall not, except in the case of gross or willful negligence on our part, be liable or responsible for any loss, costs, damages, or expenses incurred or sustained by anyone resulting from any interpretation made by any of our officers, agents or employees. These interpretations are also subject to our general terms and conditions set out in our current Price Schedule.

Comments

OTHER SERVICES:

 X-Y CALIPER / GAMMA RAY
 BOREHOLE COMPENSATED SONIC
 BOREHOLE TELEVIEWER
 FLOWMETER
 DUAL INDUCTION

 DYNAMIC FLOWRATE = 305 GPM

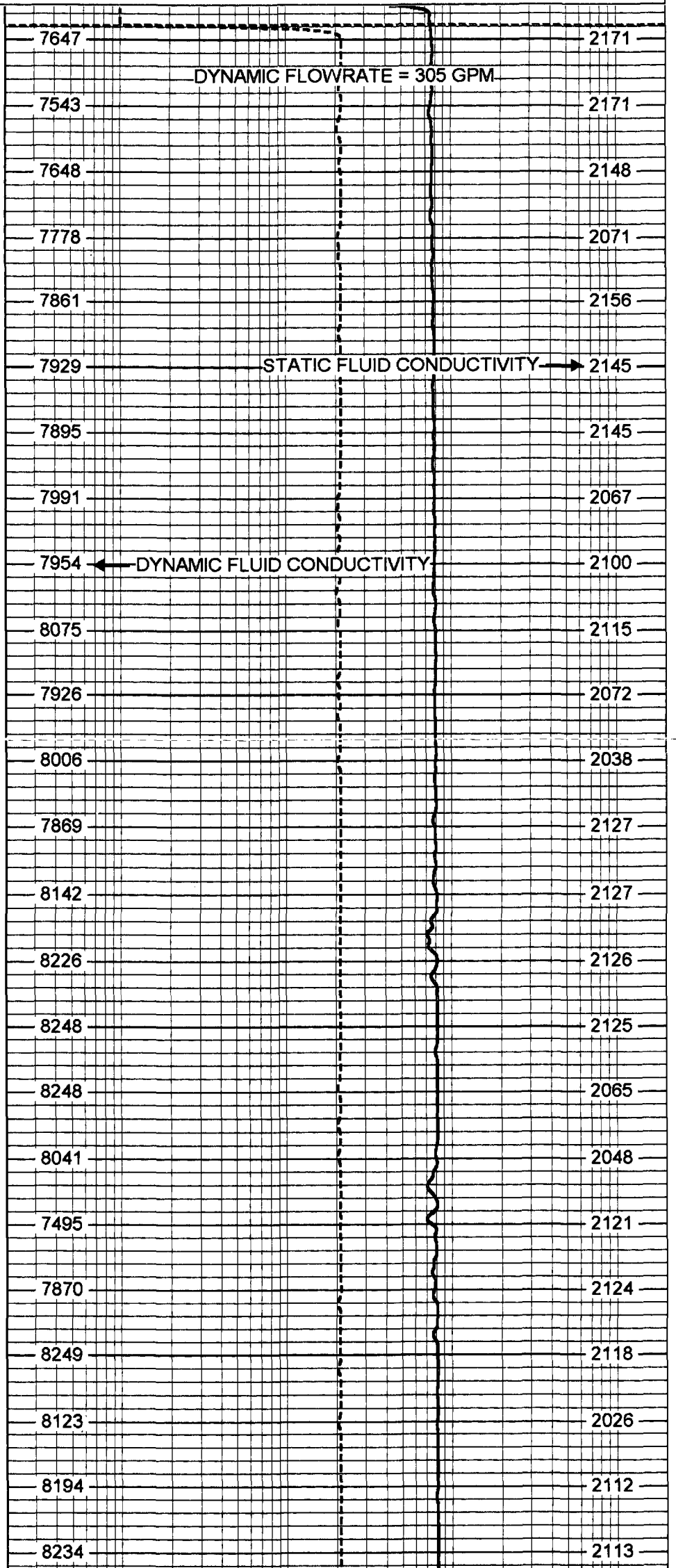
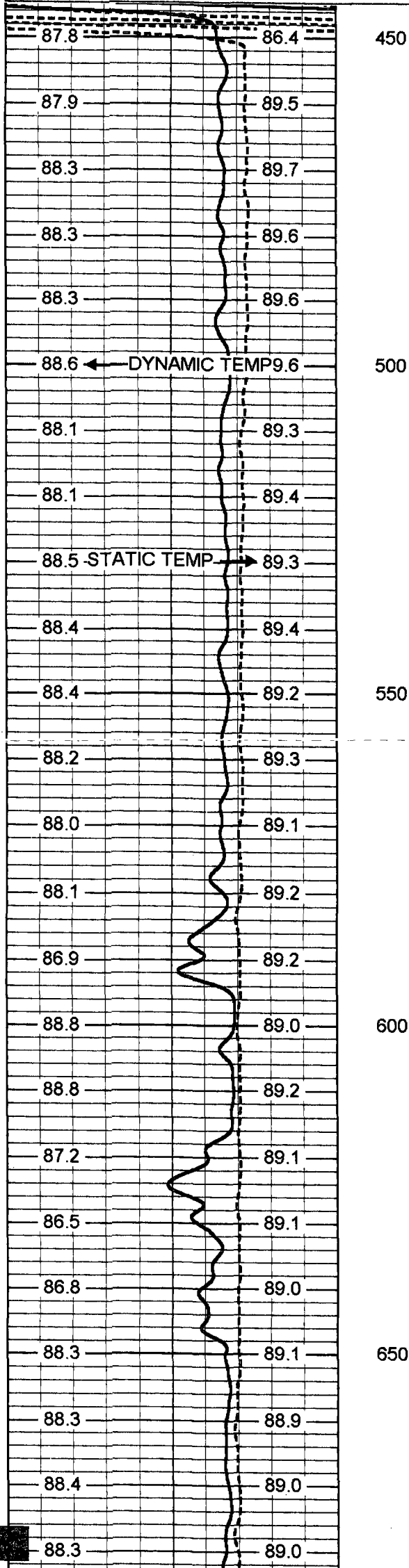


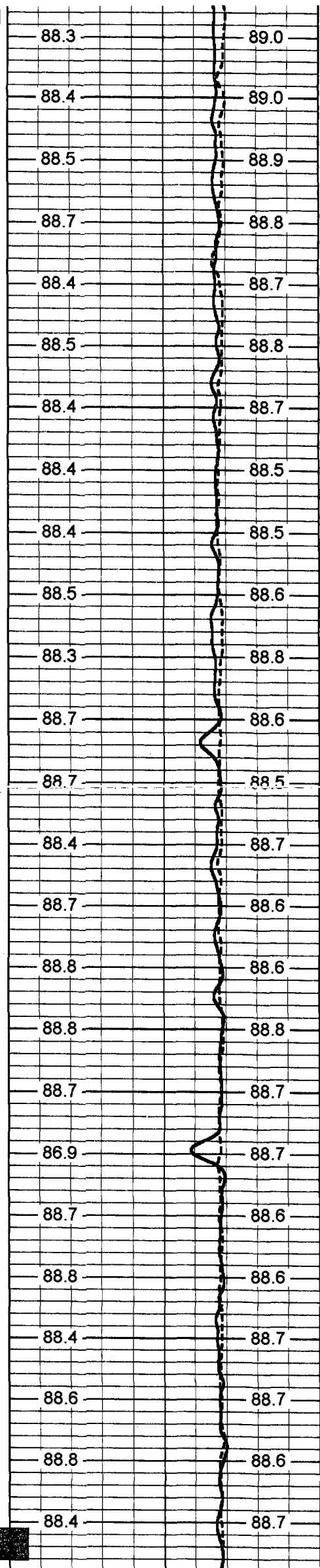
MERGED FCT

Database File: golgtiw1.db
 Dataset Pathname: run2/pass12
 Presentation Format: frt_mg
 Dataset Creation: Sat Apr 05 10:17:21 2008 by Log 6.2_B4
 Charted by: Depth in Feet scaled 1:240

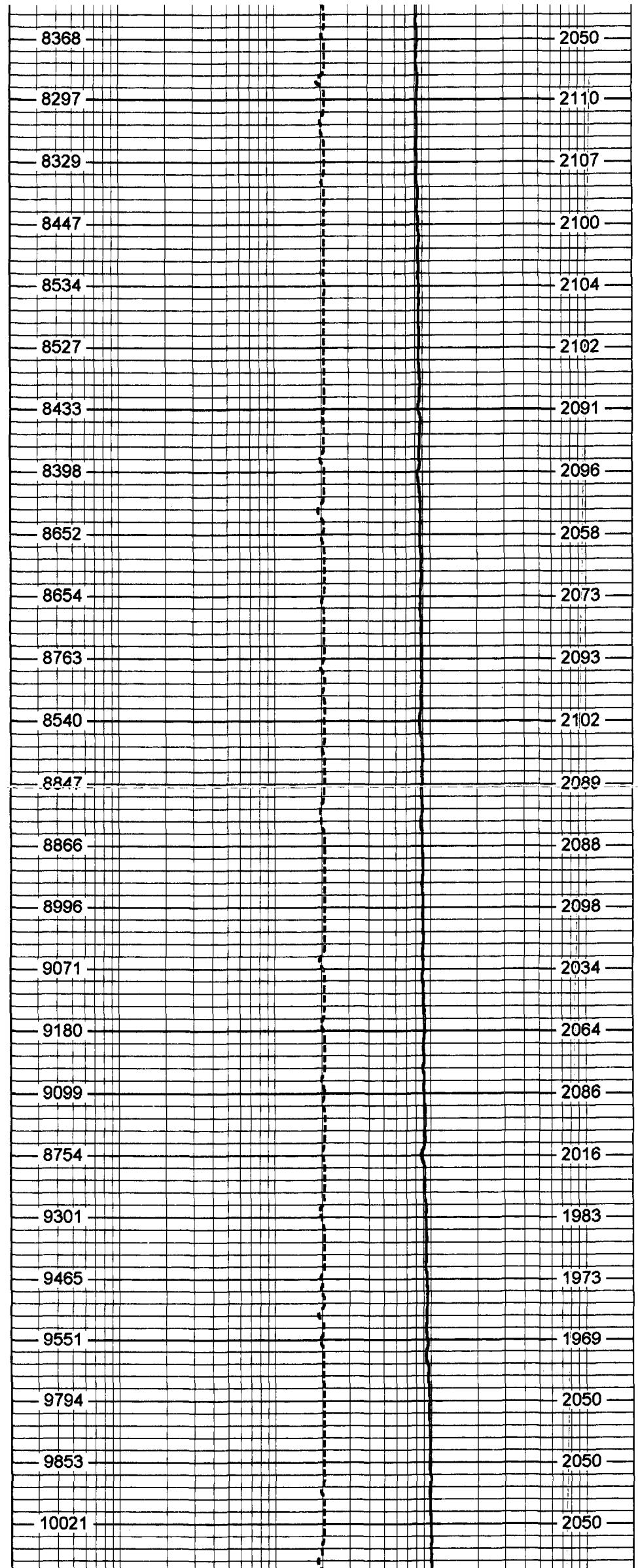
75	DYNAMIC TEMP (degF)	95
75	STATIC TEMP (degF)	95

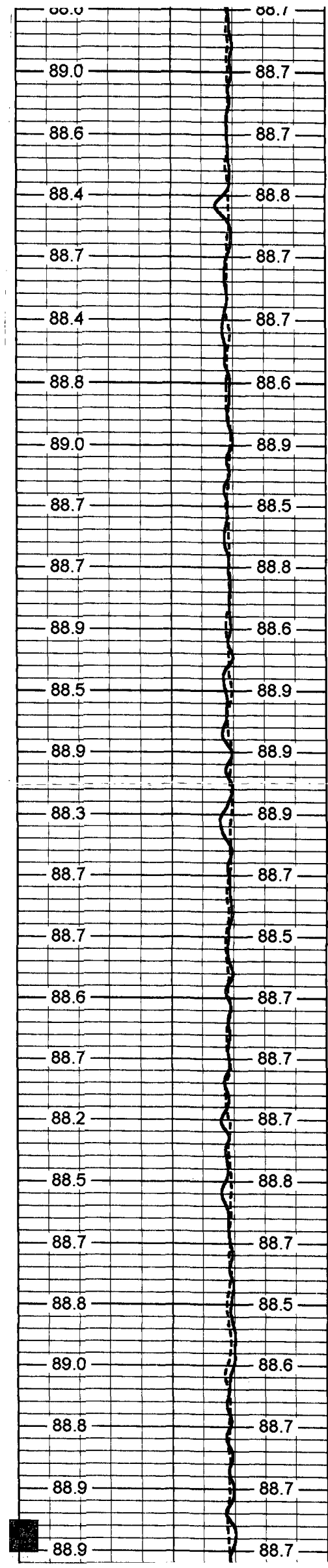
20	DYNAMIC FLUID CONDUCTIVITY (uS)	200000
20	STATIC FLUID CONDUCTIVITY (uS)	200000



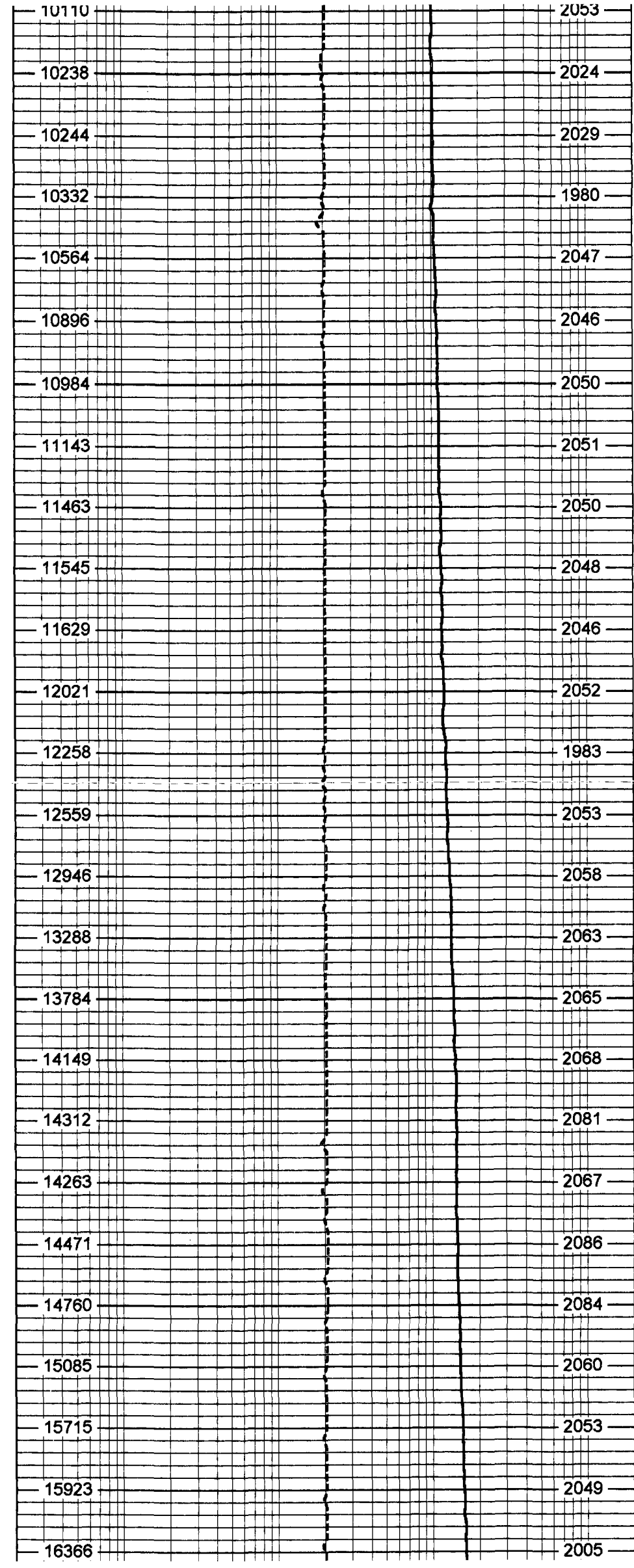


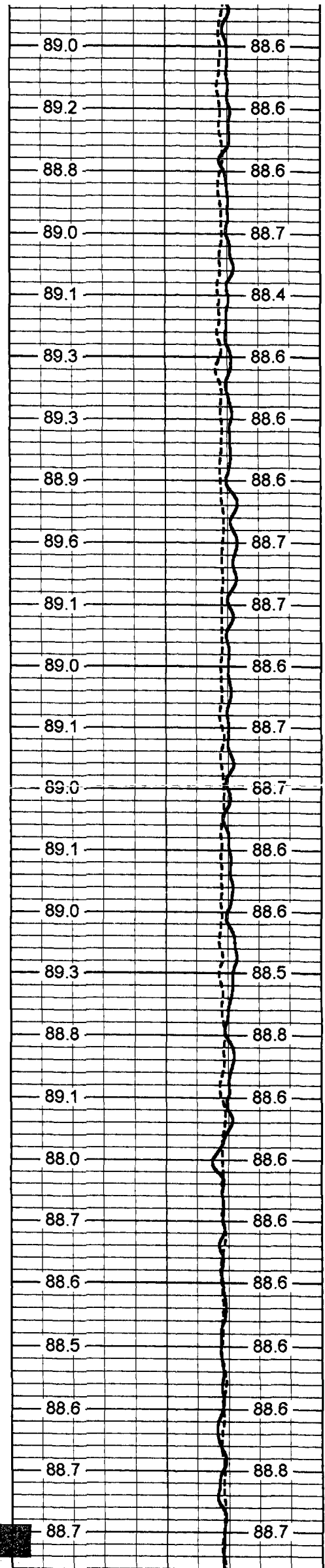
700
750
800
850
900



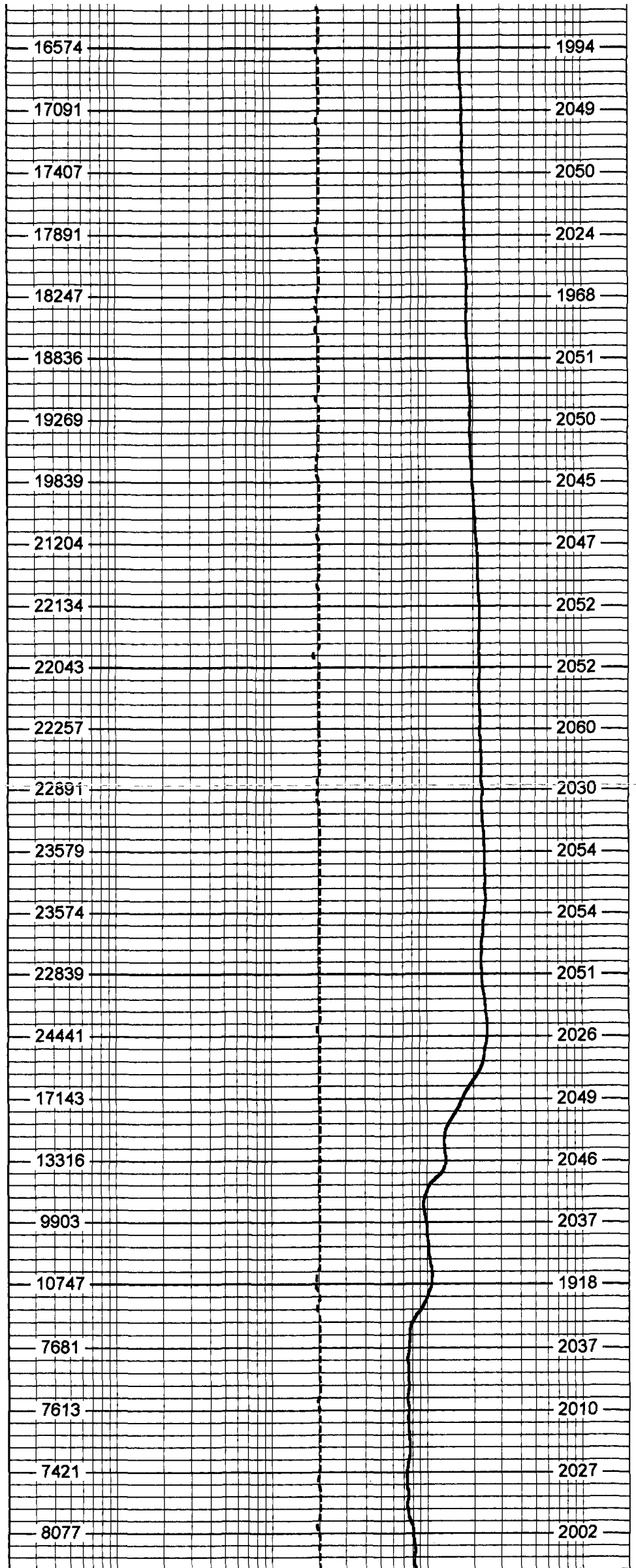


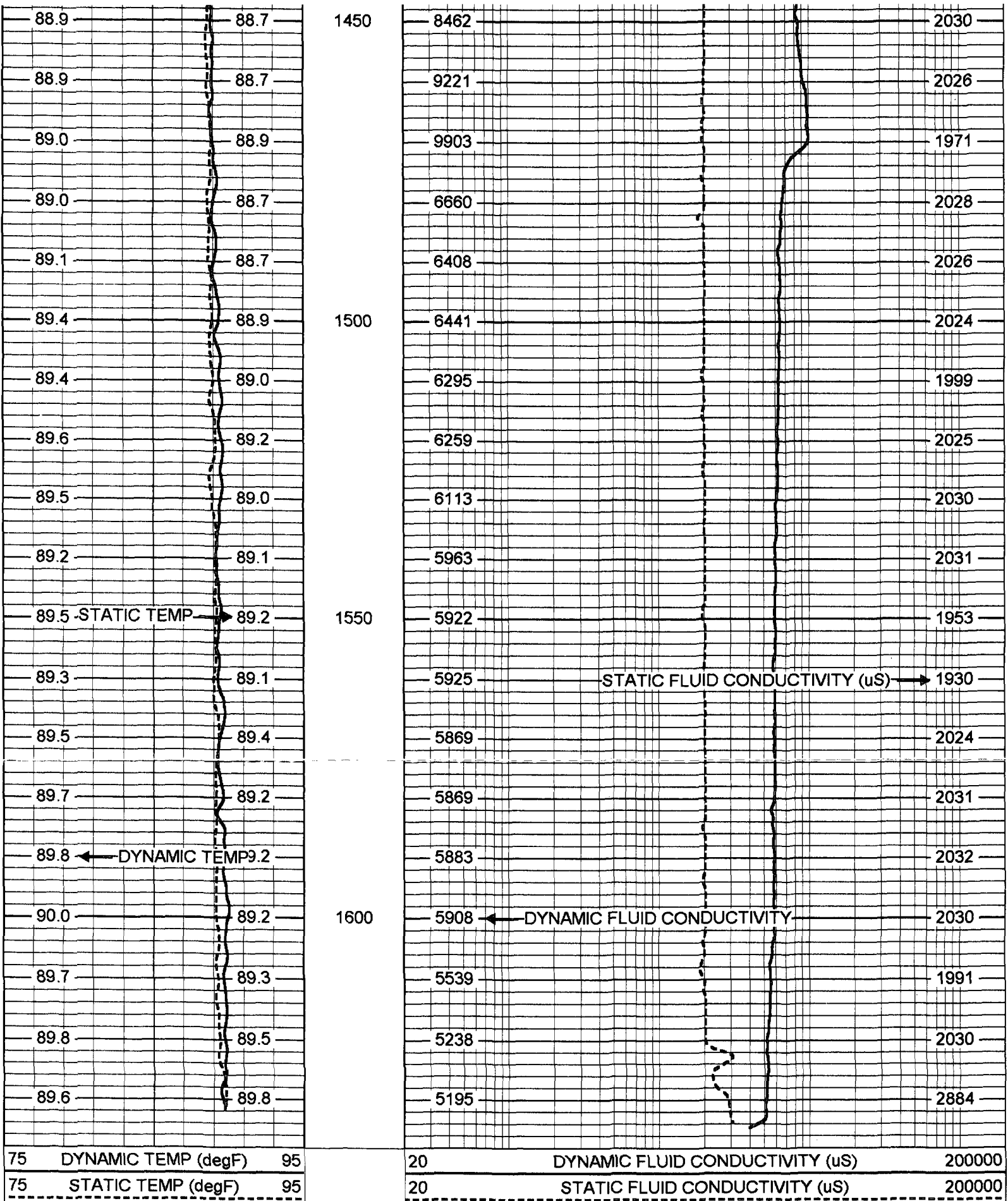
950
1000
1050
1100
1150





1200
1250
1300
1350
1400





75	DYNAMIC TEMP (degF)	95	20	DYNAMIC FLUID CONDUCTIVITY (uS)	200000
75	STATIC TEMP (degF)	95	20	STATIC FLUID CONDUCTIVITY (uS)	200000

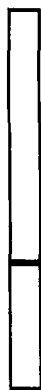
FRT Calibration Report			
Serial Number:		31	
Tool Model:		SONDEX	
Performed:		Wed Jul 12 08:38:31 2006	
Point #	Reading		Reference
1	30.817	cps	1000.000
2	171.328	cps	10000.000
3	448.517	cps	25000.000
4	965.887	cps	50000.000

Temperature Calibration Report

Serial Number: 31
Tool Model: SONDEX
Performed: Tue Feb 27 11:21:18 2007

Point #	Reading		Reference	
1	128.595	cps	41	degF
2	265.492	cps	70	degF
3	697.392	cps	156	degF

TEMP 0.70 ft
FRES 0.50 ft



TEMP-SONDEX (31)
10.00 lb 1.62 in OD 1.20 ft

FRT-SONDEX (31)
10.00 lb 1.69 in OD 0.60 ft

Dataset: run2/pass12
Total Length: 1.80 ft
Total Weight: 20.00 lb
O.D.: 1.69 in