

**HIGH RESOLUTION
TEMPERATURE
LOG**

Company **ARCADIS**
Well **IW-1**
Field **GOLDEN GATE**
County **COLLIER**
State **FL**

Company **ARCADIS**
Well **IW-1**
Field **GOLDEN GATE**
County **COLLIER** State **FLORIDA**

Location	Permanent Datum	GL	Elevation	Other Services RTS
	Log Measured From	GL		
	Drilling Measured From	GL		

Date	20-AUG-2008			
Run Number	RTS			
Depth Driller	3108'			
Depth Logger	2870'			
Bottom Logged Interval	2870'			
Top Log Interval	SURFACE			
Open Hole Size	18"			
Type Fluid	WATER			
Density / Viscosity	NA			
Max. Recorded Temp.	NA			
Estimated Cement Top	NA			
Time Well Ready	0700			
Time Logger on Bottom	0830			
Equipment Number	102			
Location	FT. MYERS			
Recorded By	CATHEY			
Witnessed By	L. KWAPINSKI			

Run Number	Borehole Record		Run Number	Borehole Record		To
	Bit	From		From	To	
ONE	46.5"	SURFACE	494'	FIVE	12.25"	3205'
TWO	12.25"	CASING	1634'	SIX	26.5"	2468'
THREE	34.5"	CASING	1585'	SEVEN	18"	3108'
FOUR	34.5"	CASING	1566'			

Casing Record	Size	Wgt/Ft	Top	Bottom
Casing String	48"		375" W.T.	54'
Casing String	36"		375" W.T.	490'
Casing String	28"		375" W.T.	1580'
Casing String	18"		500" W.T.	2472'
Injection Tubing	12"	FRP		2462'

<<< Fold Here >>>

All interpretations are opinions based on inferences from electrical or other measurements and we cannot and do not guarantee the accuracy or correctness of any interpretation, and we shall not, except in the case of gross or willful negligence on our part, be liable or responsible for any loss, costs, damages, or expenses incurred or sustained by anyone resulting from any interpretation made by any of our officers, agents or employees. These interpretations are also subject to our general terms and conditions set out in our current Price Schedule.

Comments

TEMPERATURE

Charted by:

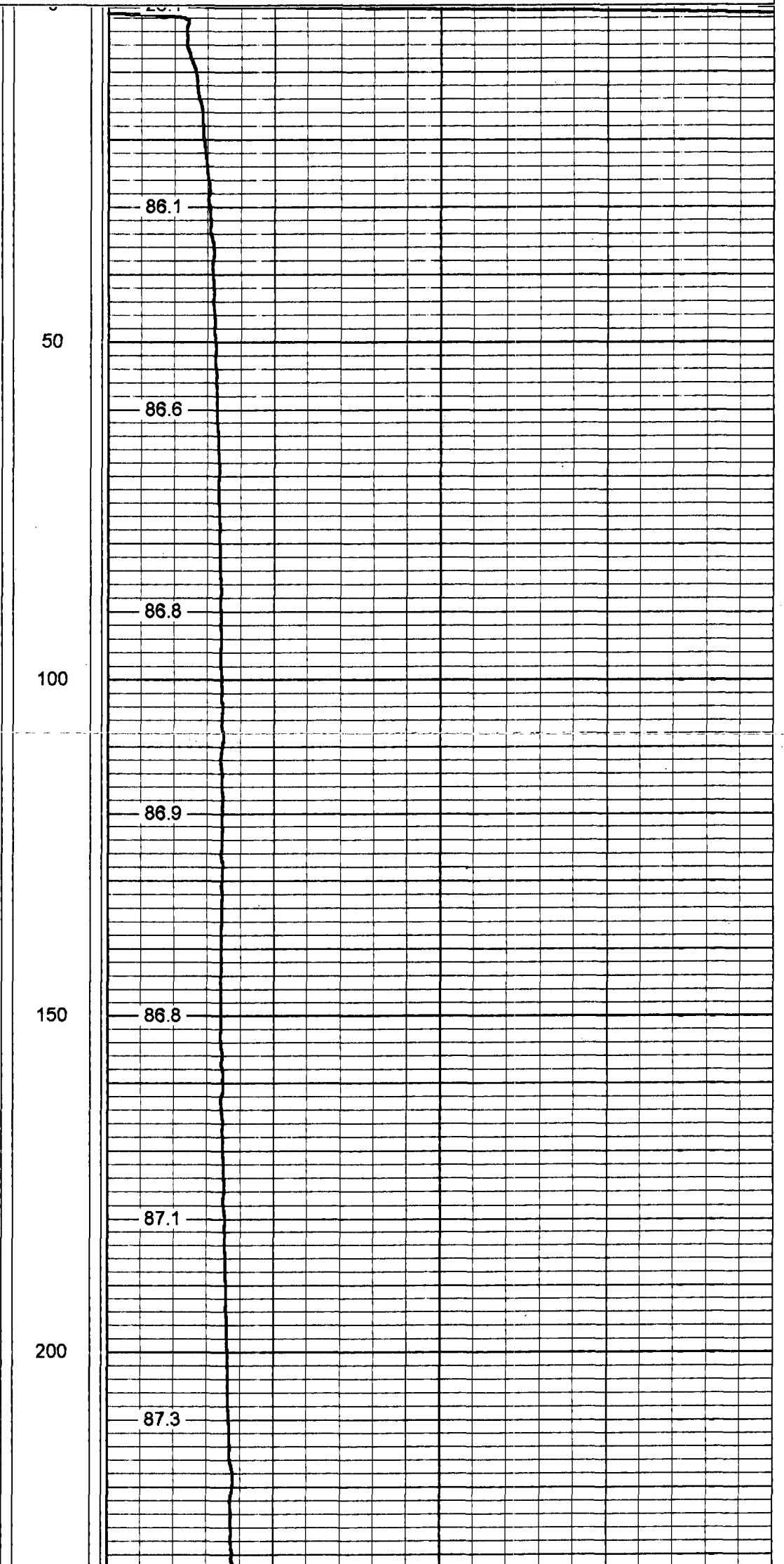
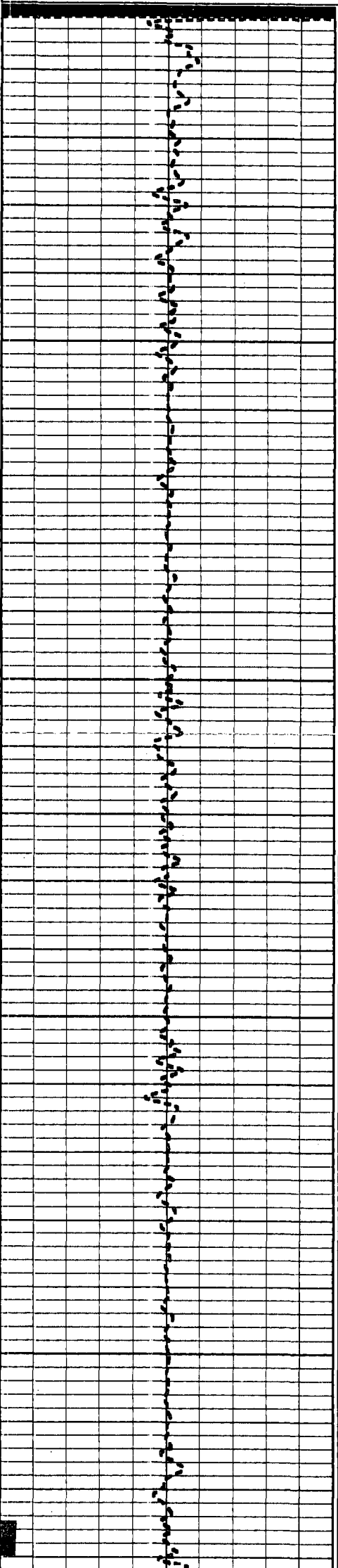
Depth in Feet scaled 1:240

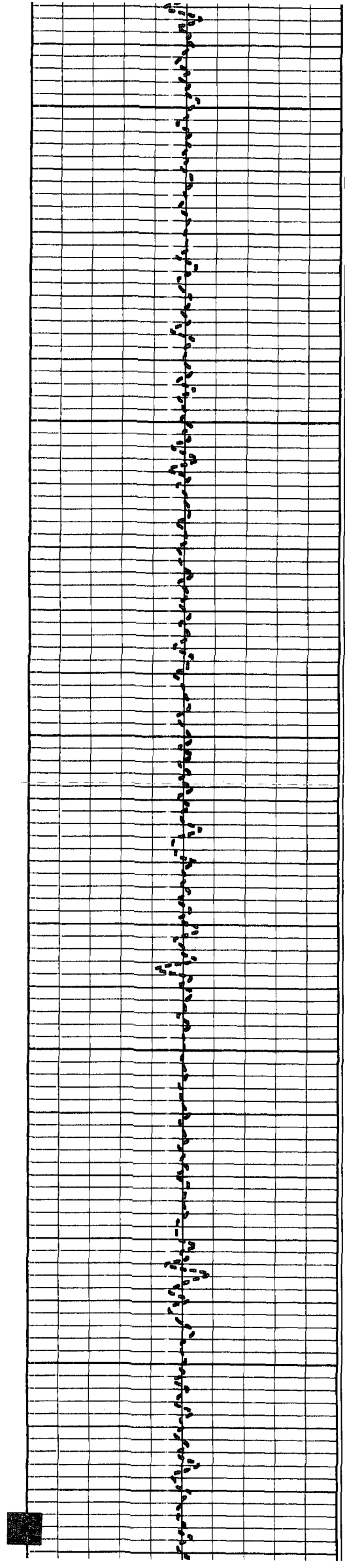
-1 Delta Temperature (degF) 1

80

Temperature (degF)

120





250

300

350

400

450

87.6

87.7

87.7

87.7

87.9

88.1

88.4

88.6

88.7



500

88.8

550

88.9

89.1

600

89.3

89.3

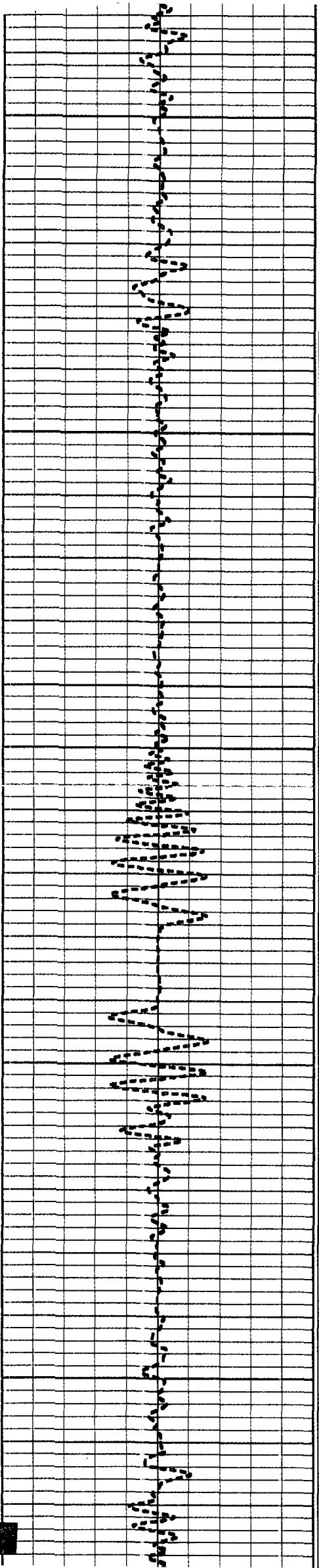
650

89.6

700

89.8

90.0



750

90.2

90.3

800

90.7

90.9

850

91.0

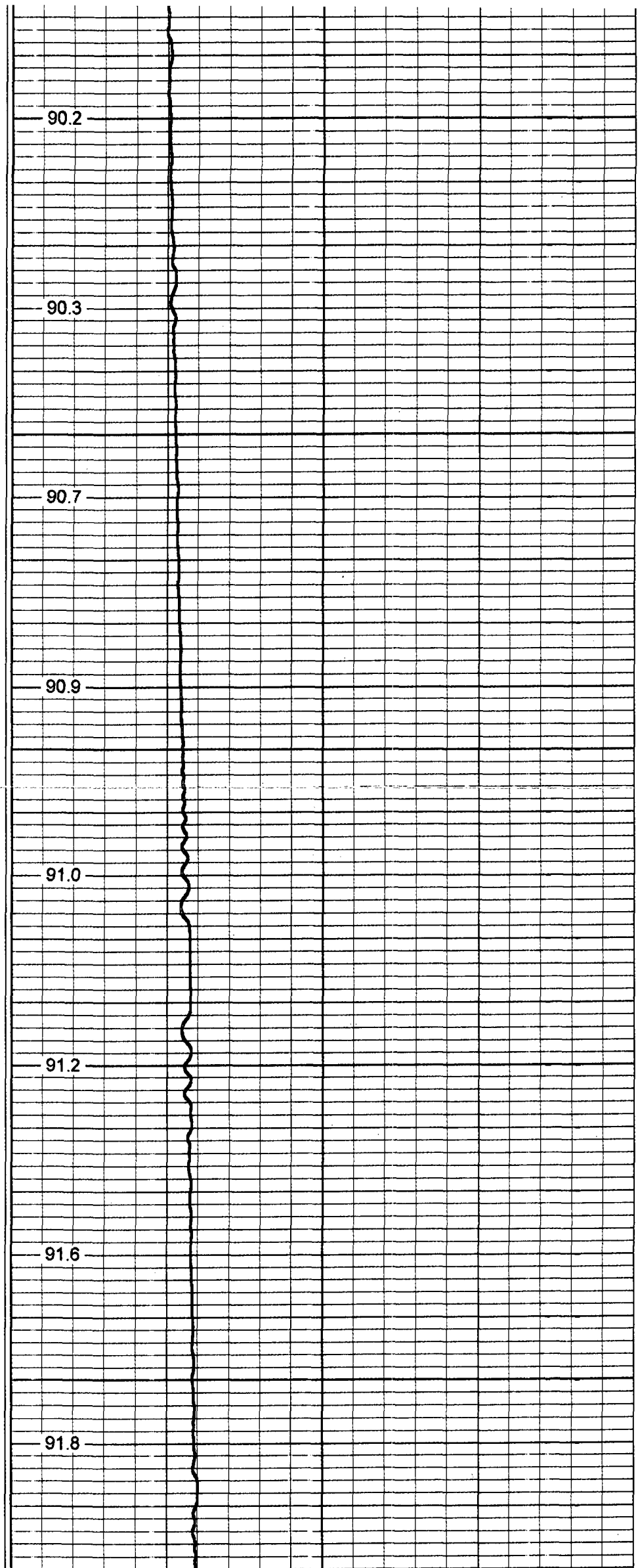
900

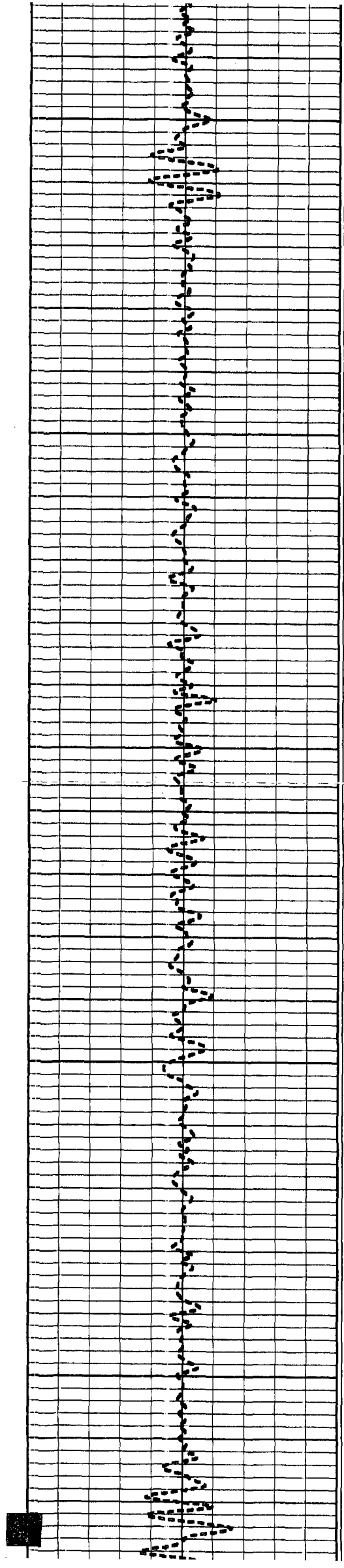
91.2

91.6

950

91.8





1000

91.9

92.1

1050

92.2

92.1

1100

92.5

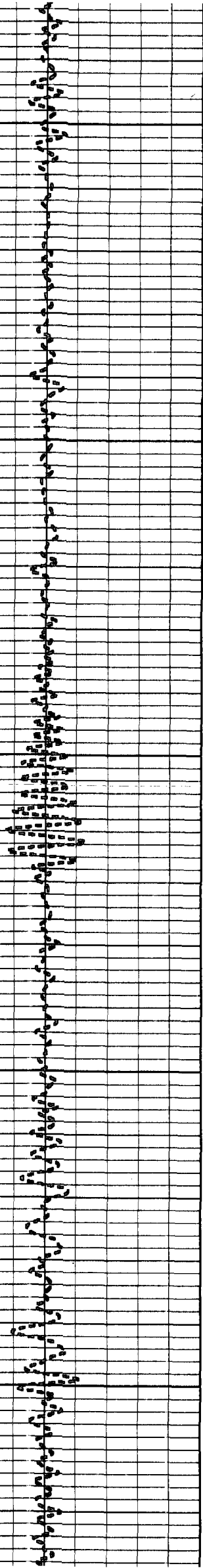
92.7

1150

92.8

1200

93.2



1250

93.4

1300

93.5

1350

93.9

93.9

1400

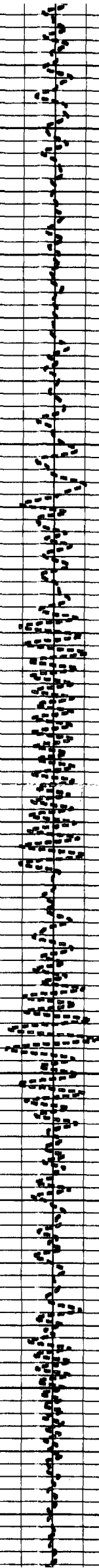
94.1

94.3

1450

94.5

94.6



1500

94.8

1550

95.0

95.3

1600

95.3

95.2

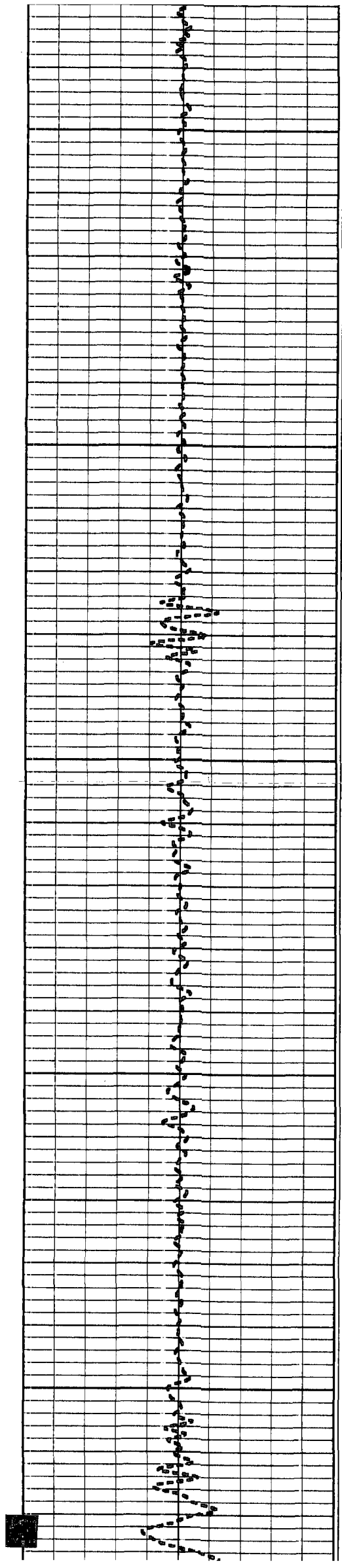
1650

95.1

95.2

1700

95.4



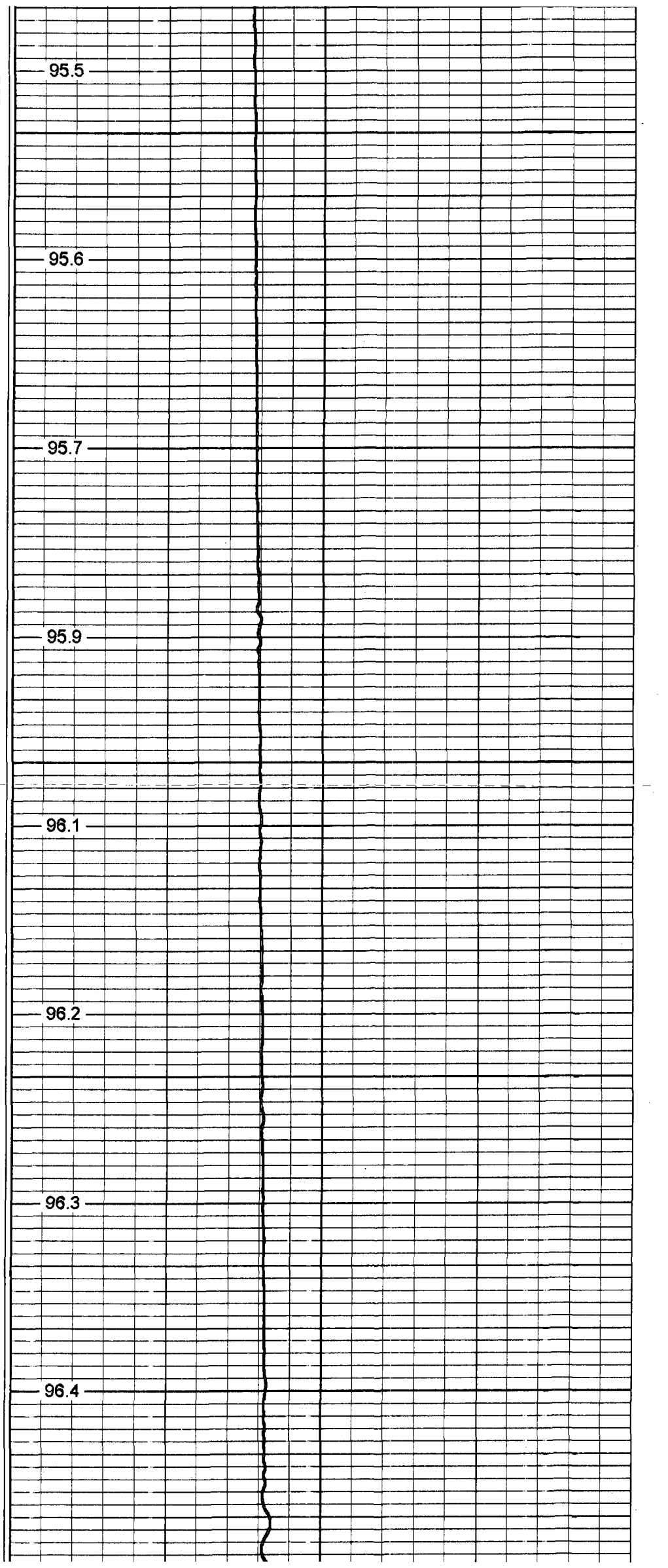
1750

1800

1850

1900

1950



95.5

95.6

95.7

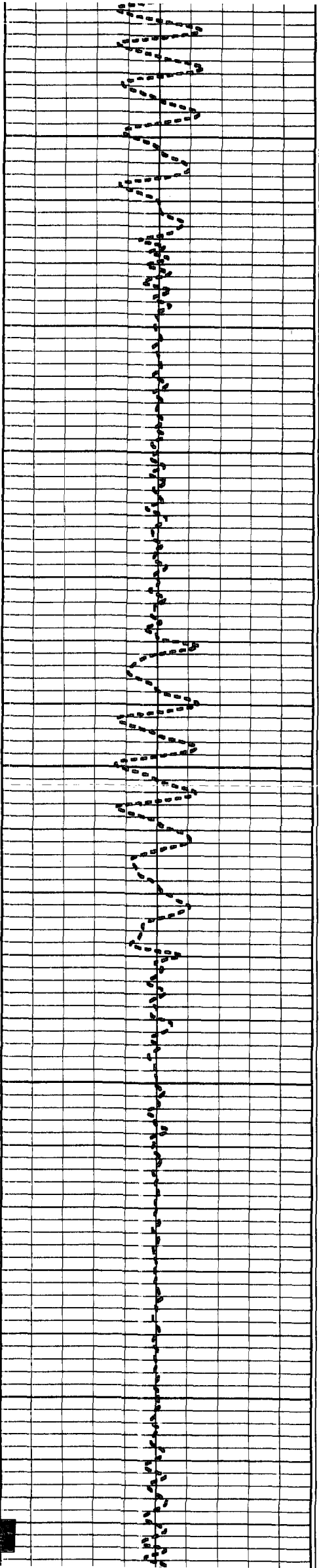
95.9

96.1

96.2

96.3

96.4



2000

2050

2100

2150

2200

96.5

96.3

96.6

96.6

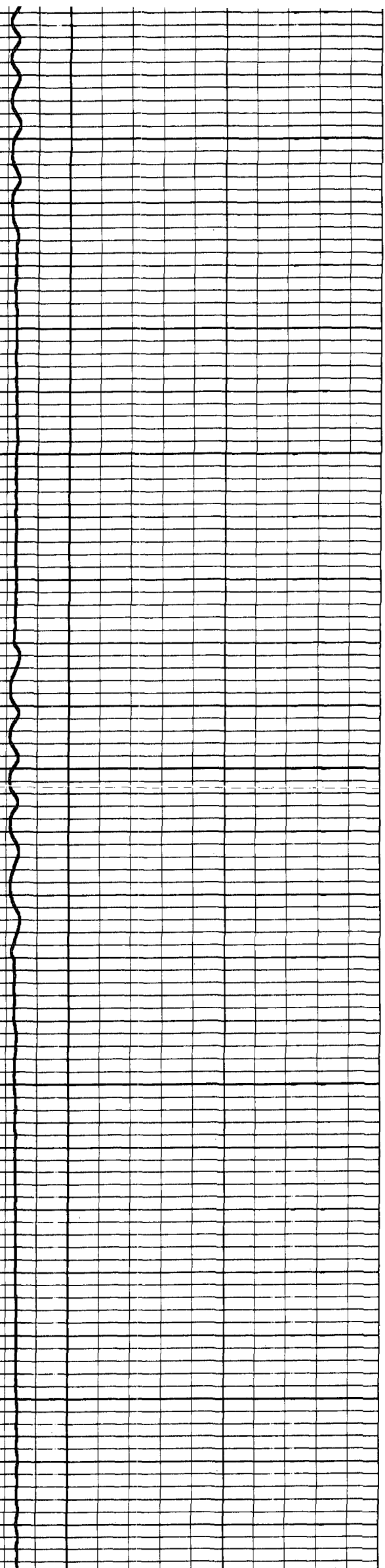
96.5

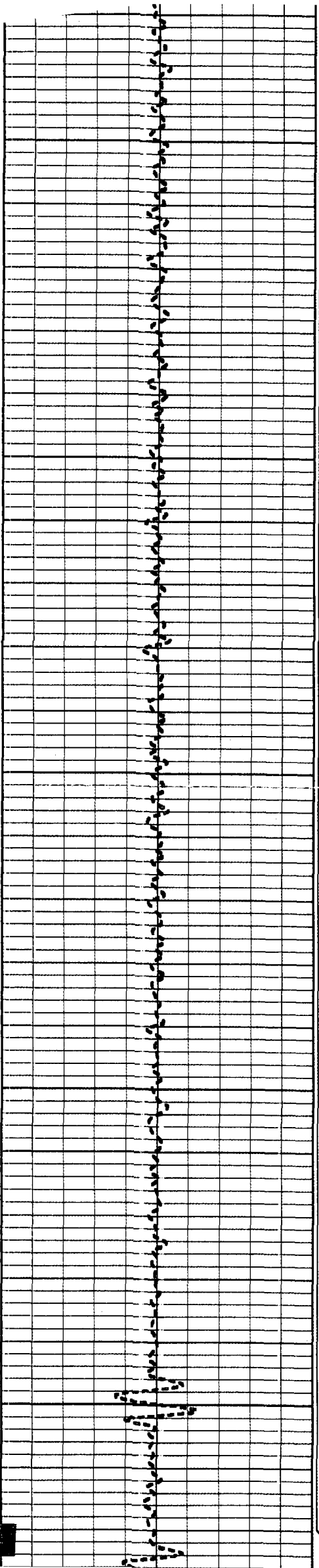
96.5

96.6

96.7

96.8





2250

96.8

96.9

2300

97.0

96.9

2350

97.0

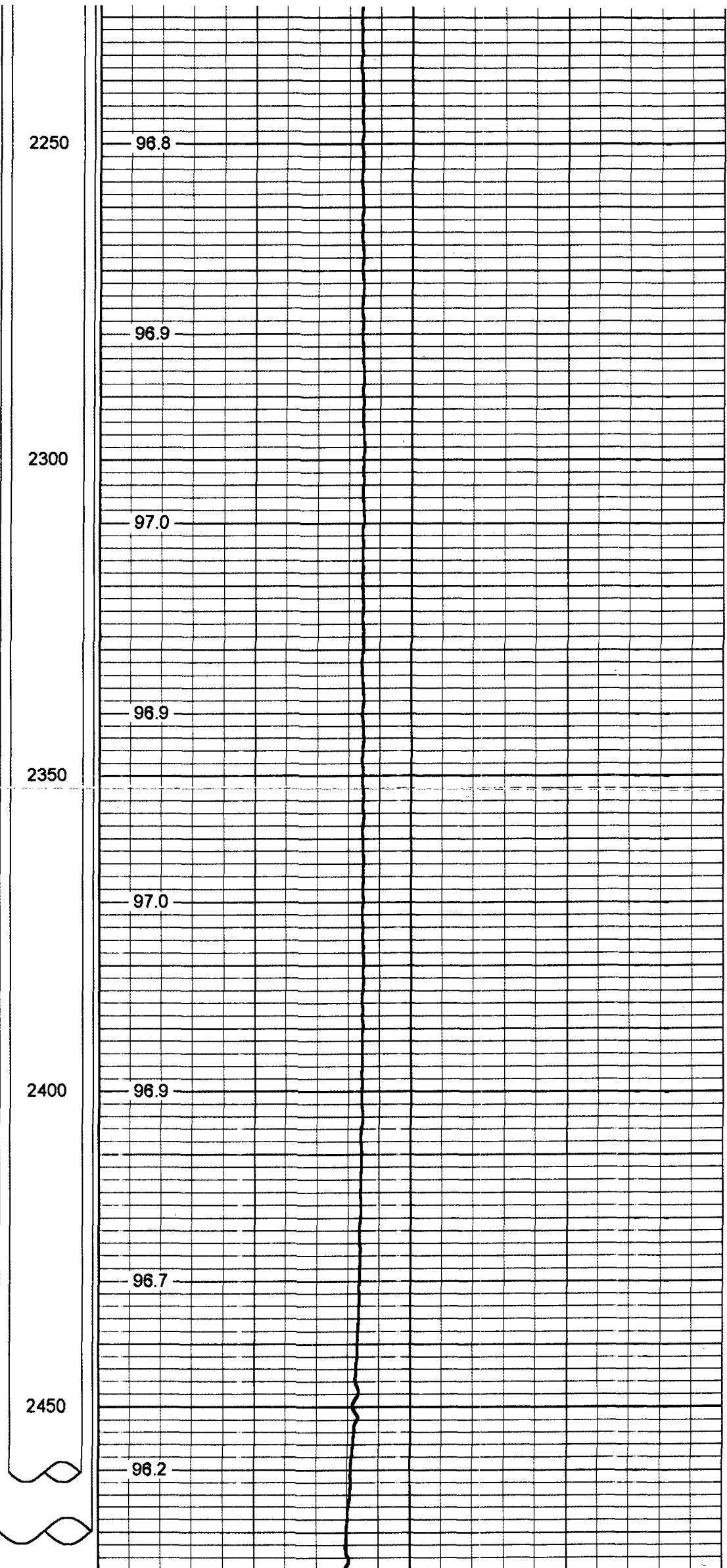
2400

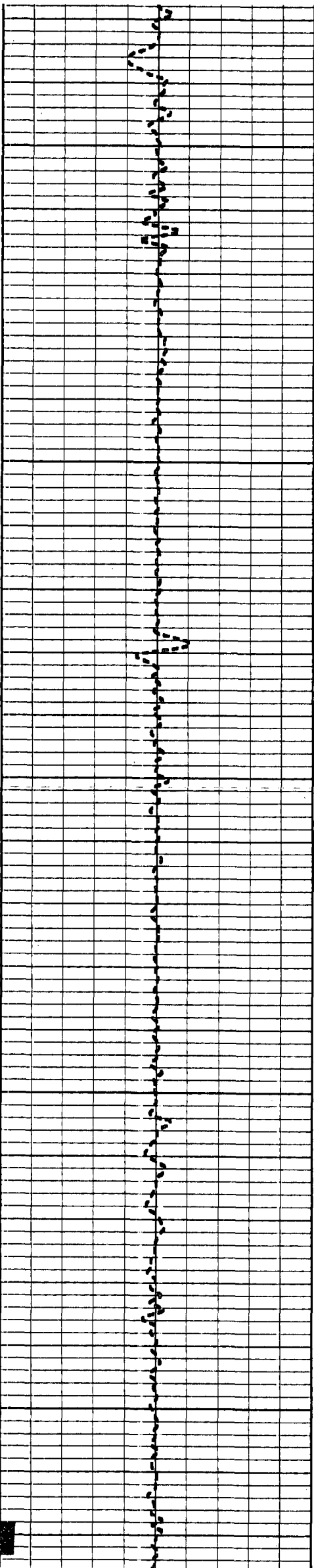
96.9

96.7

2450

96.2





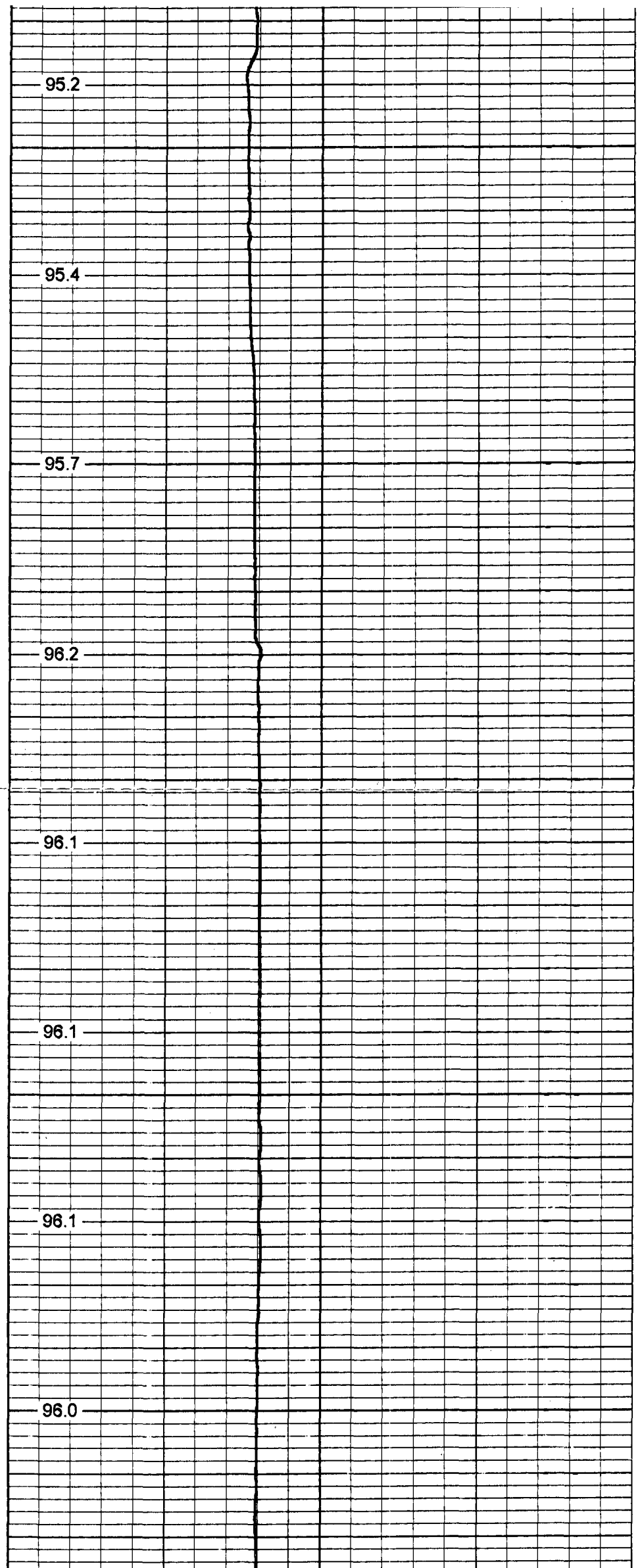
2500

2550

2600

2650

2700



95.2

95.4

95.7

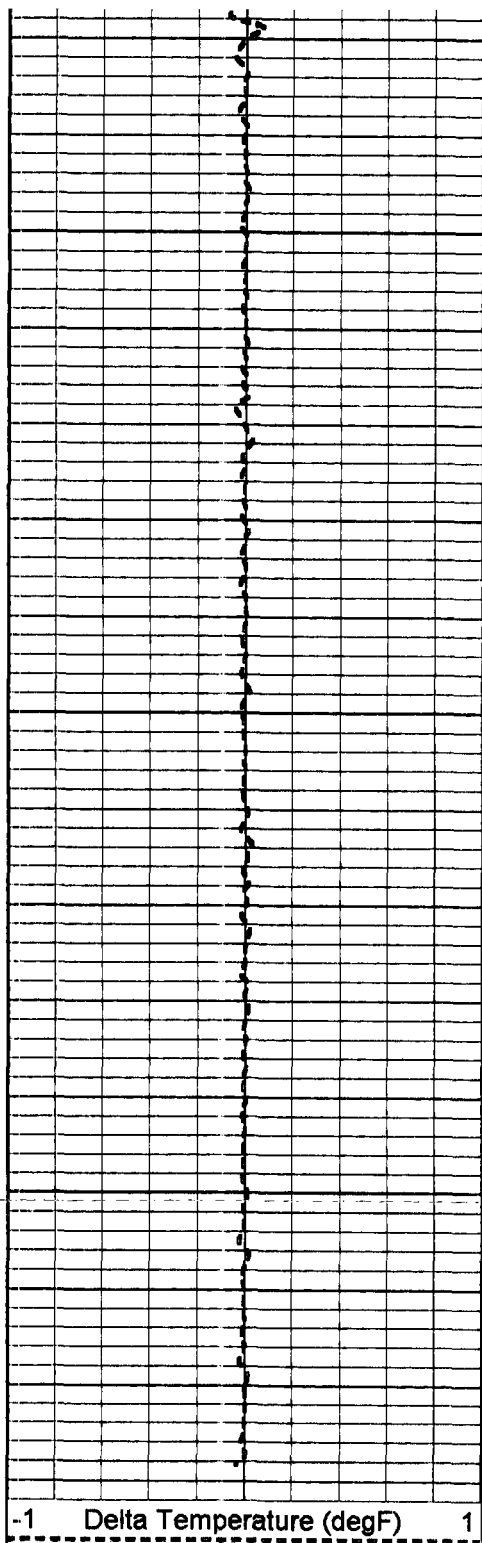
96.2

96.1

96.1

96.1

96.0

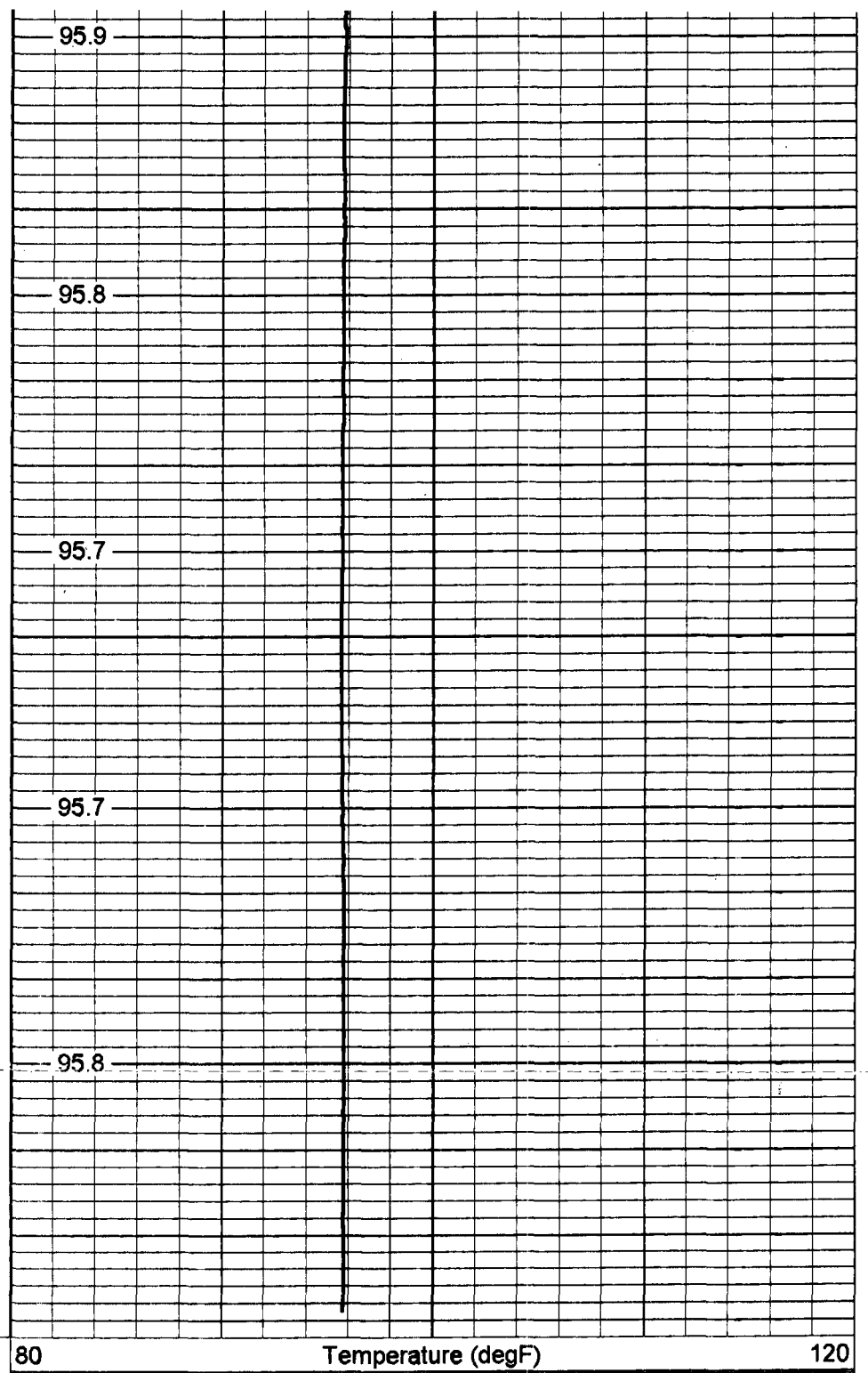


2750

2800

2850

-1 Delta Temperature (degF) 1



95.9

95.8

95.7

95.7

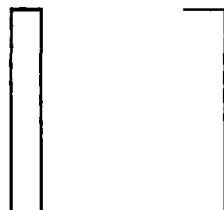
95.8

80 Temperature (degF) 120

Temperature Calibration Report

Serial Number: 954
 Tool Model: RTS
 Performed: Tue Jun 06 16:26:48 2006

Point #	Reading		Reference	
1	342.2	cps	34	degF
2	865.2	cps	86	degF
3	1553.28	cps	152	degF



TEMP-RTS (954)
70.00 lb 1.69 in OD 25.50 ft

TEMP 0.10 ft

Dataset:	RTS/pass1
Total Length:	25.50 ft
Total Weight:	70.00 lb
O.D.	1.69 in