

TEMPERATURE LOG

FLORIDA DISTRICT
JUL 21 2008

Company FGUA
Well DEEP INJECTION WELL #1
Field LEHIGH ACRES W.T.P.
County LEE
State FL

Company FGUA
Well DEEP INJECTION WELL #1
Field LEHIGH ACRES W.T.P.
County LEE
State FL
Location FLORIDA GOVERNMENTAL UTILITY AUTHORITY

Permanent Datum PAD
Log Measured From PAD
Drilling Measured From PAD
Elevation PAD
Other Services SEE COMMENTS
K.B.
D.F.
G.L.

Date	1-FEB-2008
Run Number	EIGHT
Depth Driller	3200'
Depth Logger	3200'
Bottom Logged Interval	3200'
Top Log Interval	CASING
Open Hole Size	12.25"
Type Fluid	WATER
Density / Viscosity	N/A
Max. Recorded Temp.	N/A
Estimated Cement Top	N/A
Time Well Ready	ON ARRIVAL
Time Logger on Bottom	1700
Equipment Number	103
Location	FT MYERS
Recorded By	CATHEY
Witnessed By	M. REGON

Run Number	Borehole Record			Run No.	Borehole Record		
	Bit	From	To		Bit	From	To
ONE	12.25"	SURFACE	1201'	SIX	12.25"	CASING	3200'
TWO	52"	57'	1185'				
FOUR	12.25"	1185'	1810'				
FIVE	40.50"	CASING	1805'				
Casing Record		Size	Wd/Ft		Top	Bottom	
Surface String	54"	375" W.T.		SURFACE	57'		
Prod. String	42"	375" W.T.		SURFACE	1180'		
Production String	34"	375" W.T.		SURFACE	1800'		
Liner							

<<< Fold Here >>>

All interpretations are opinions based on inferences from electrical or other measurements and we cannot and do not guarantee the accuracy or correctness of any interpretation, and we shall not, except in the case of gross or willful negligence on our part, be liable or responsible for any loss, costs, damages, or expenses incurred or sustained by anyone resulting from any interpretation made by any of our officers, agents or employees. These interpretations are also subject to our general terms and conditions set out in our current Price Schedule.

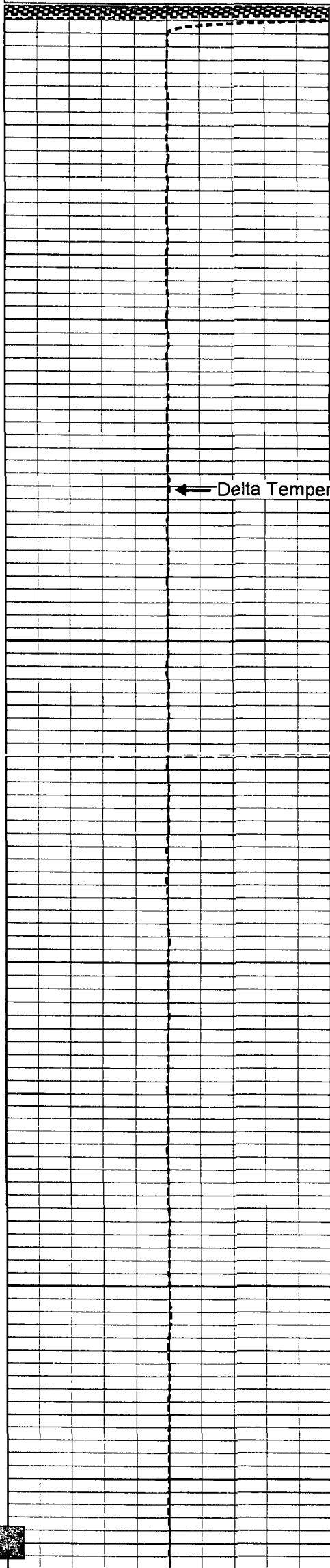
Comments

OTHER SERVICES:
X-Y CALIPER / GAMMA RAY
DUAL INDUCTION
BOREHOLE COMPENSATED SONIC
VIDEO



TEMPERATURE

Database File: lehiiw1.db
Dataset Pathname: run8/pass1
Presentation Format: temp
Dataset Creation: Fri Feb 01 16:47:36 2008 by Log 6.2_B4
Charted by: Depth in Feet scaled 1:240

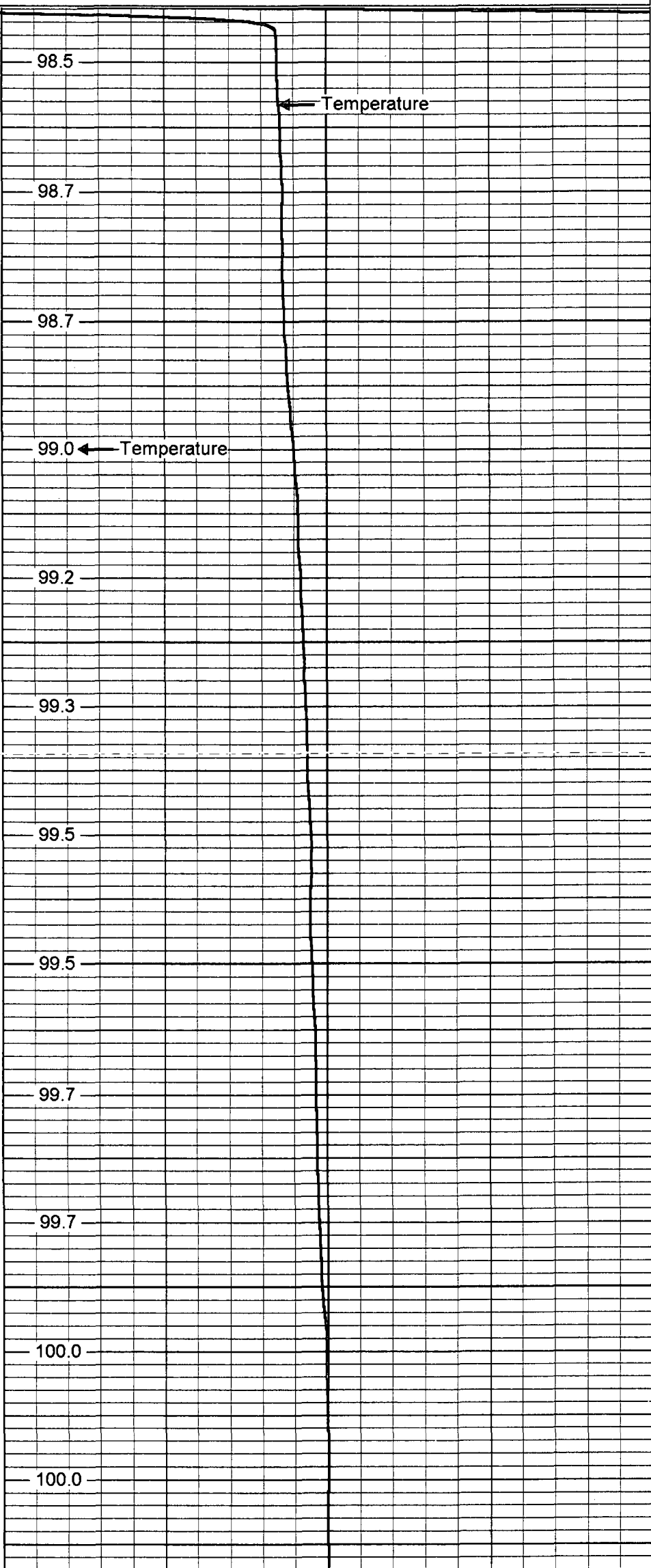


1800

1850

1900

1950



98.5

98.7

98.7

99.0

99.2

99.3

99.5

99.5

99.7

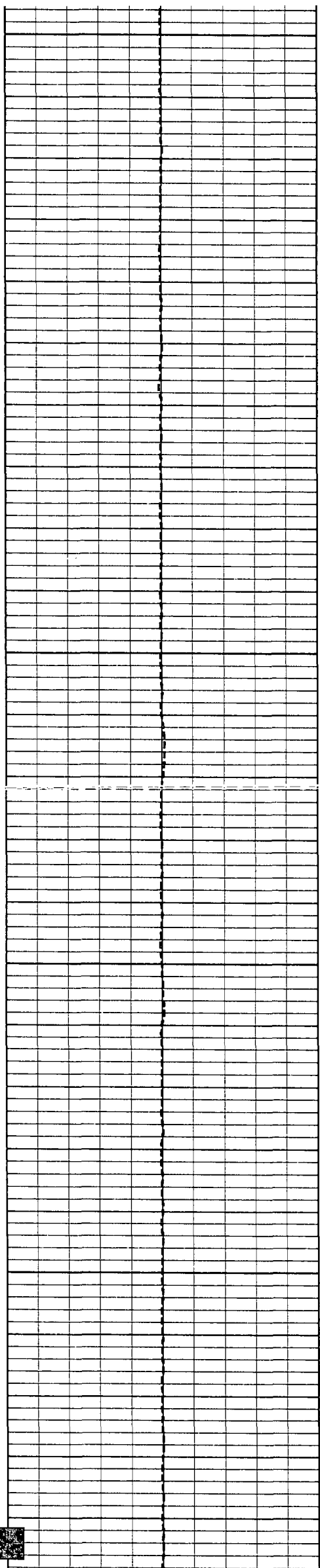
99.7

100.0

100.0

Temperature

Temperature



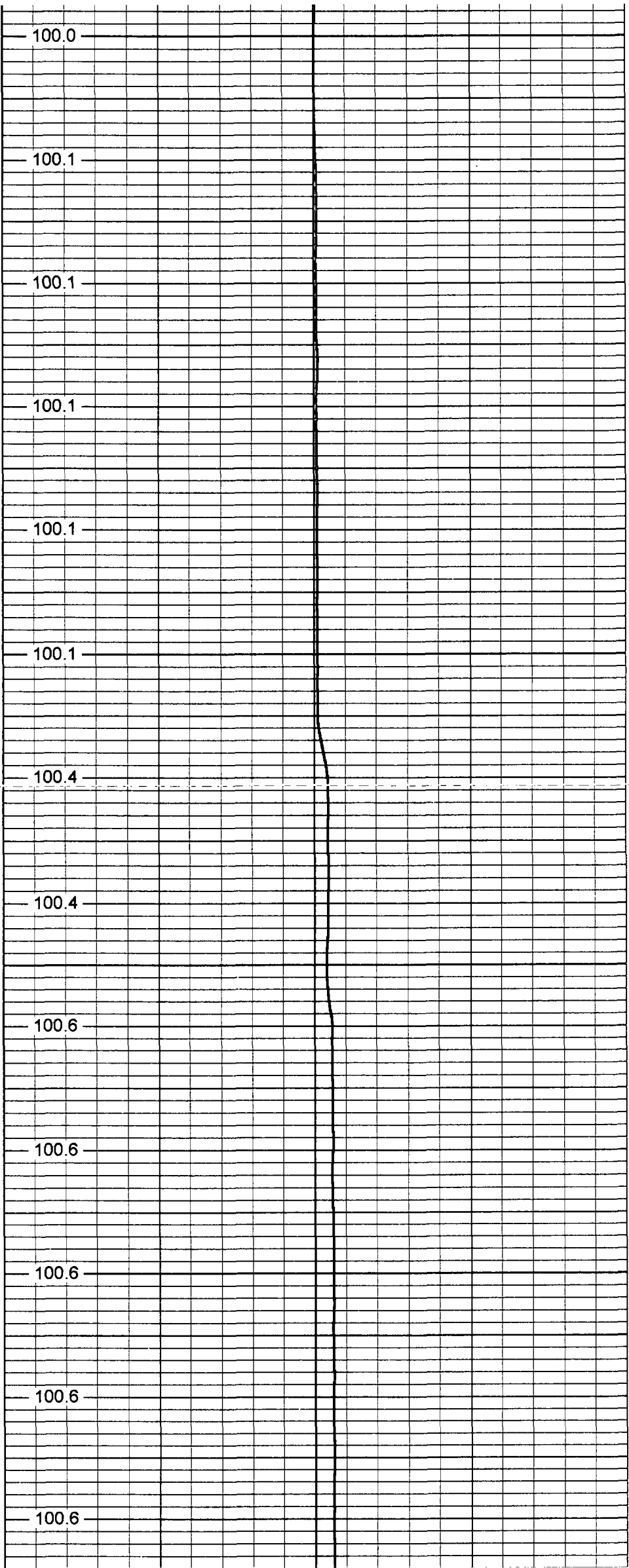
2000

2050

2100

2150

2200



100.0

100.1

100.1

100.1

100.1

100.1

100.4

100.4

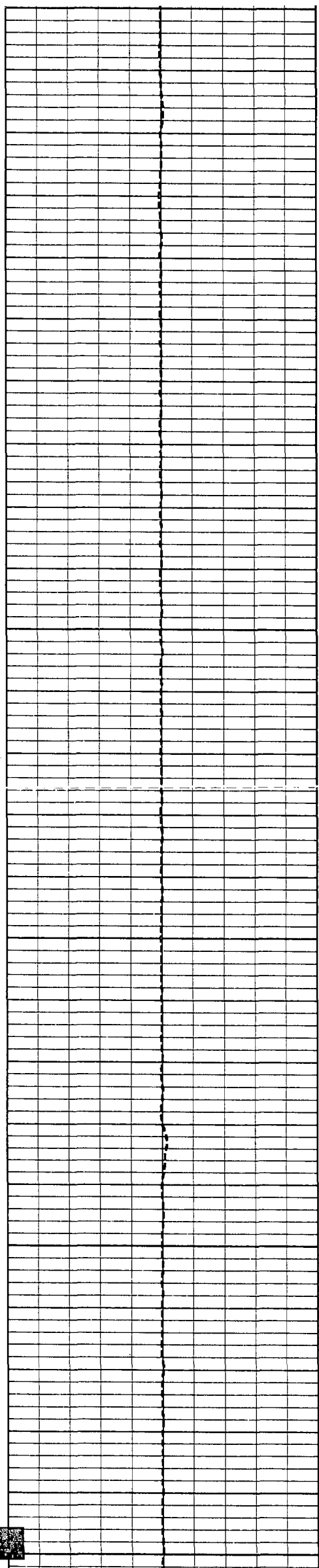
100.6

100.6

100.6

100.6

100.6



2250

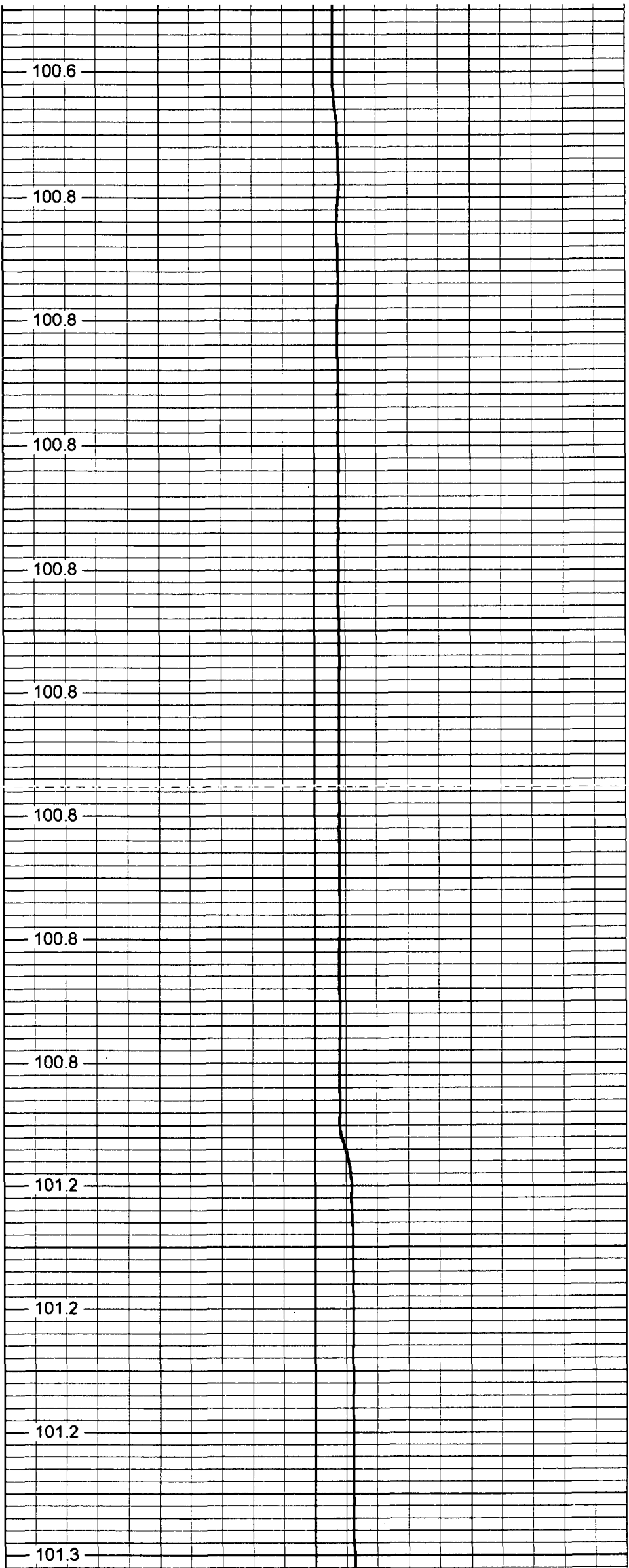
2300

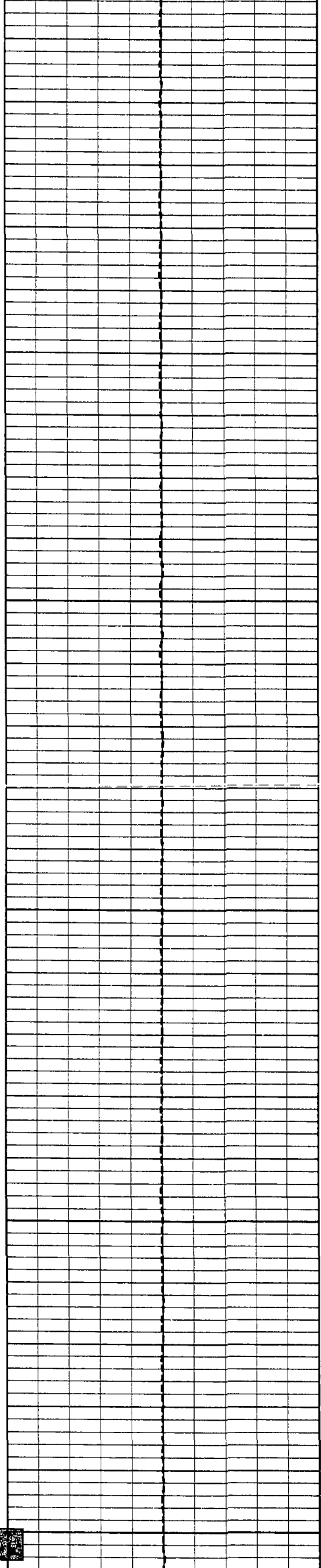
2350

2400

2450

2500





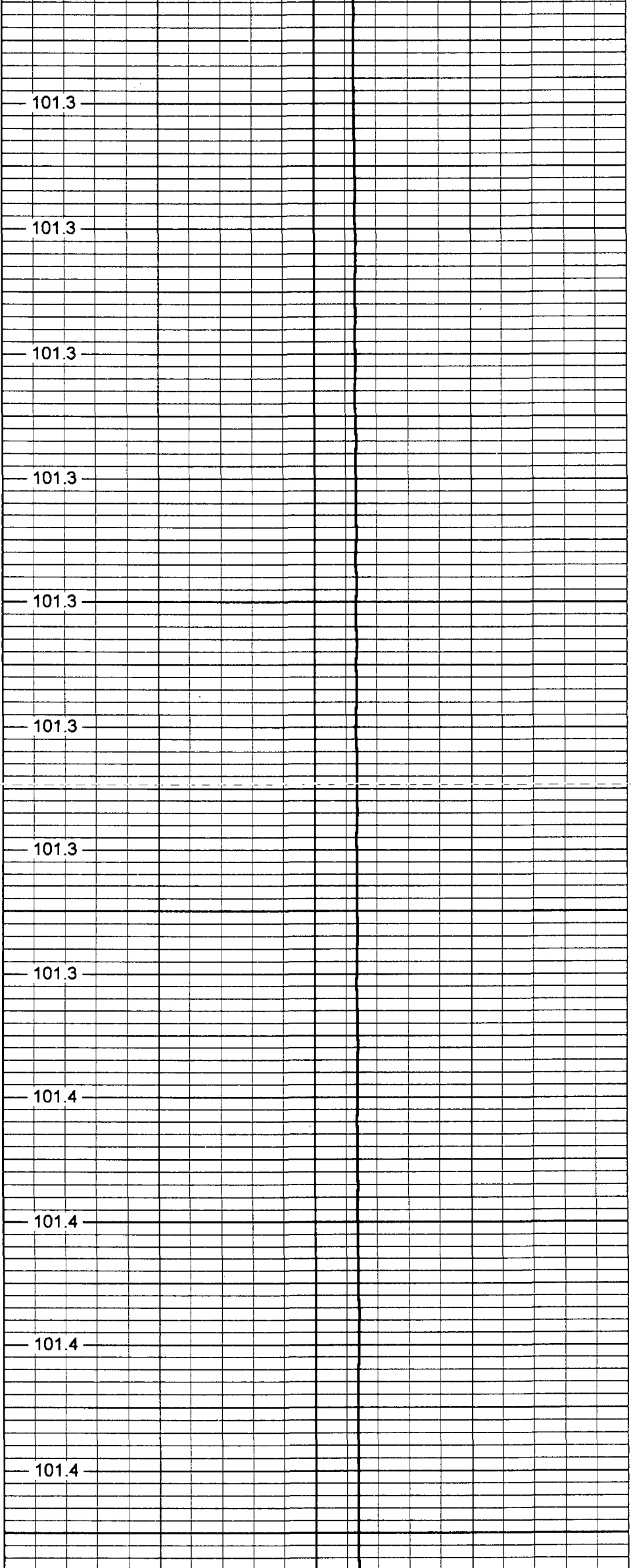
2550

2600

2650

2700

2750



101.3

101.3

101.3

101.3

101.3

101.3

101.3

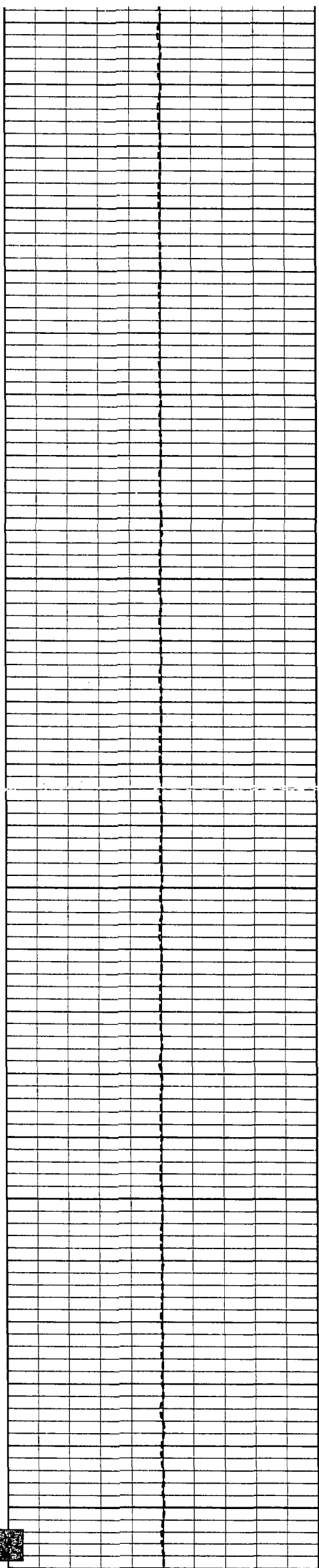
101.3

101.4

101.4

101.4

101.4



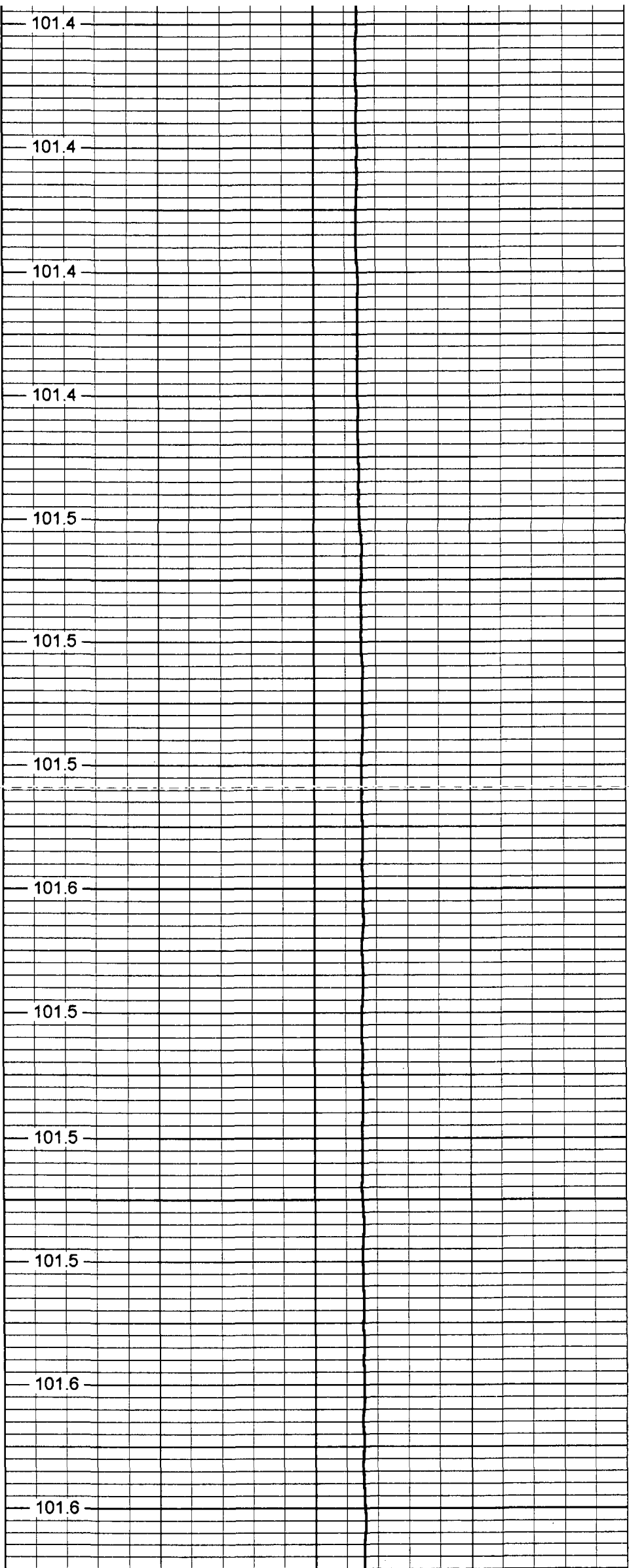
2800

2850

2900

2950

3000



101.4

101.4

101.4

101.4

101.5

101.5

101.5

101.6

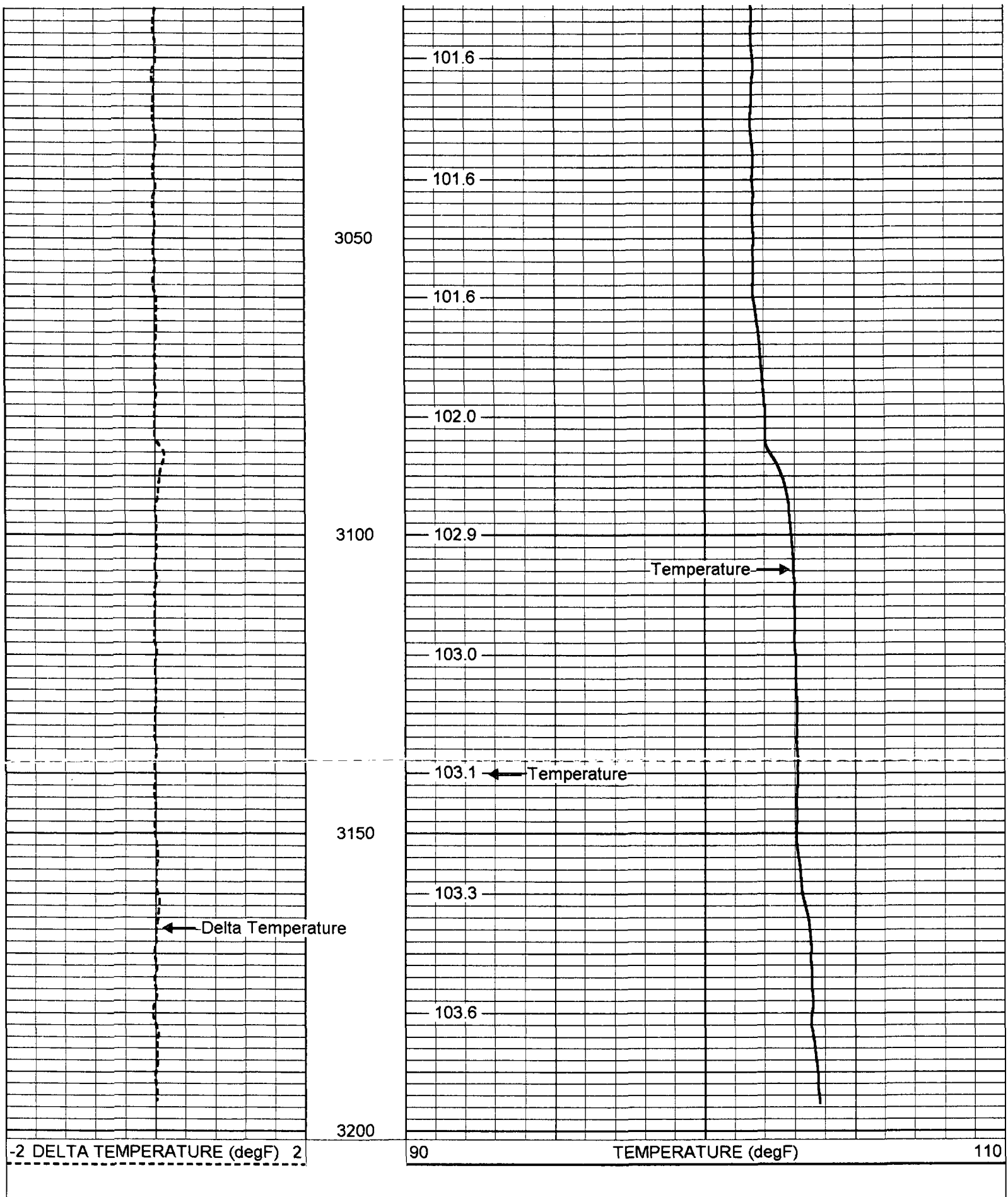
101.5

101.5

101.5

101.6

101.6



FRT Calibration Report

Serial Number: 31
 Tool Model: SONDEX
 Performed: Wed Jul 12 08:38:31 2006

Point #	Reading		Reference
1	30.817	cps	1000.000
2	171.328	cps	10000.000
3	448.517	cps	25000.000
4	965.867	cps	50000.000
5		cps	

Temperature Calibration Report

Serial Number: 31
Tool Model: SONDEX
Performed: Tue Feb 27 11:21:18 2007

Point #	Reading		Reference	
1	128.595	cps	41	degF
2	265.492	cps	70	degF
3	697.392	cps	156	degF

TEMP 0.70 ft
FRES 0.50 ft



TEMP-SONDEX (31)
10.00 lb 1.62 in OD 1.20 ft

FRT-SONDEX (31)
10.00 lb 1.69 in OD 0.60 ft

Dataset: run8/pass1
Total Length: 1.80 ft
Total Weight: 20.00 lb
O.D.: 1.69 in