

**YOUNGQUIST**  
**BROTHERS**  
 GEOPHYSICAL LOGGING DIVISION  
 RECEIVED - D.E.P. TEMPERATURE LOG  
 MAR 21 2008  
 SOUTH BEND, INDIANA

Company FGUA  
 Well DEEP INJECTION WELL #1  
 Field LEHIGH ACRES W.T.P.  
 County LEE  
 State FL

Company FGUA  
 Well DEEP INJECTION WELL #1  
 Field LEHIGH ACRES W.T.P.  
 County LEE  
 State FL

Location: API #:  
 FLORIDA GOVERNMENTAL UTILITY AUTHORITY

SEC TWP RGE  
 Permanent Datum PAD  
 Log Measured From PAD  
 Drilling Measured From PAD

Other Services  
 SEE COMMENTS  
 Elevation  
 K.B.  
 D.F.  
 G.L.

|                        |             |  |
|------------------------|-------------|--|
| Date                   | 31-MAR-2008 |  |
| Run Number             | MIT08       |  |
| Depth Driller          | 3200'       |  |
| Depth Logger           | 2370'       |  |
| Bottom Logged Interval | 2370'       |  |
| Top Log Interval       | SURFACE     |  |
| Open Hole Size         | 22.5"       |  |
| Type Fluid             | WATER       |  |
| Density / Viscosity    | N/A         |  |
| Max. Recorded Temp.    | 102 DEGF.   |  |
| Estimated Cement Top   | NA          |  |
| Time Well Ready        | ON ARRIVAL  |  |
| Time Logger on Bottom  | 0900        |  |
| Equipment Number       | 102         |  |
| Location               | FT MYERS    |  |
| Recorded By            | LEE         |  |
| Witnessed By           | M. REGON    |  |

| Borehole Record |                | Borehole Record |         |          |       |
|-----------------|----------------|-----------------|---------|----------|-------|
| Run Number      | Bit From       | To              | Run No. | Bit From | To    |
| ONE             | 12.25" SURFACE | 1201'           | SIX     | 12.25"   | 3200' |
| TWO             | 52" 57"        | 1185'           | SEVEN   | 32.5"    | 2370' |
| FOUR            | 12.25" 1185'   | 1810'           | EIGHTH  | 25"      | 2374' |
| FIVE            | 40.50" CASING  | 1805'           | NINE    | 22.5"    | 3200' |

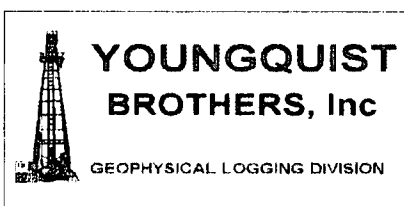
| Casing Record     | Size | Wd/Ft     | Top     | Bottom |
|-------------------|------|-----------|---------|--------|
| Surface String    | 54"  | 375" W.T. | SURFACE | 57'    |
| Prot. String      | 42"  | 375" W.T. | SURFACE | 1180'  |
| Production String | 34"  | 375" W.T. | SURFACE | 1800'  |
| Liner             | 24"  | 5 W.T.    | SURFACE | 2370'  |

All interpretations are opinions based on inferences from electrical or other measurements and we cannot and do not guarantee the accuracy or correctness of any interpretation, and we shall not, except in the case of gross or willful negligence on our part, be liable or responsible for any loss, costs, damages, or expenses incurred or sustained by anyone resulting from any interpretation made by any of our officers, agents or employees. These interpretations are also subject to our general terms and conditions set out in our current Price Schedule.

Comments

EJECTOR 13.5' FROM TOOL BOTTOM.

HRT  
 DHTVS

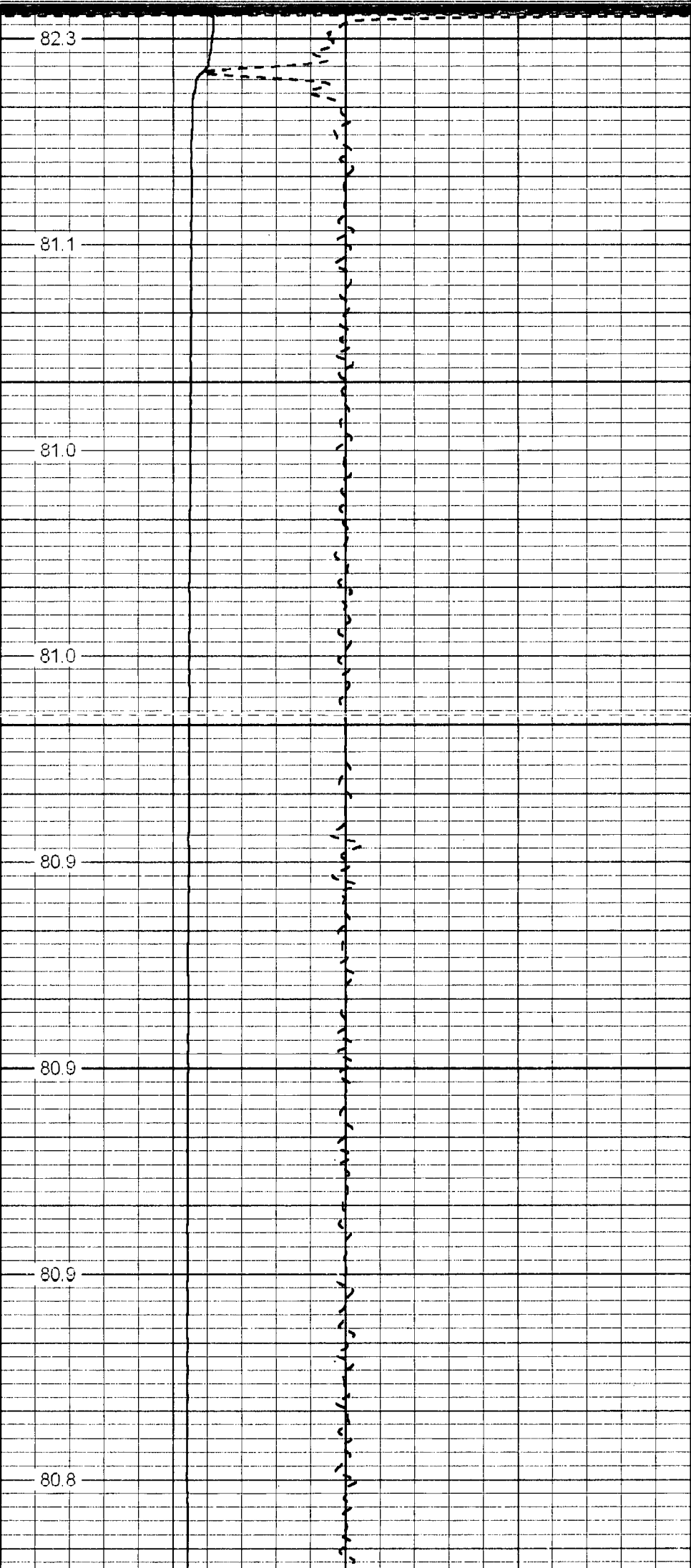
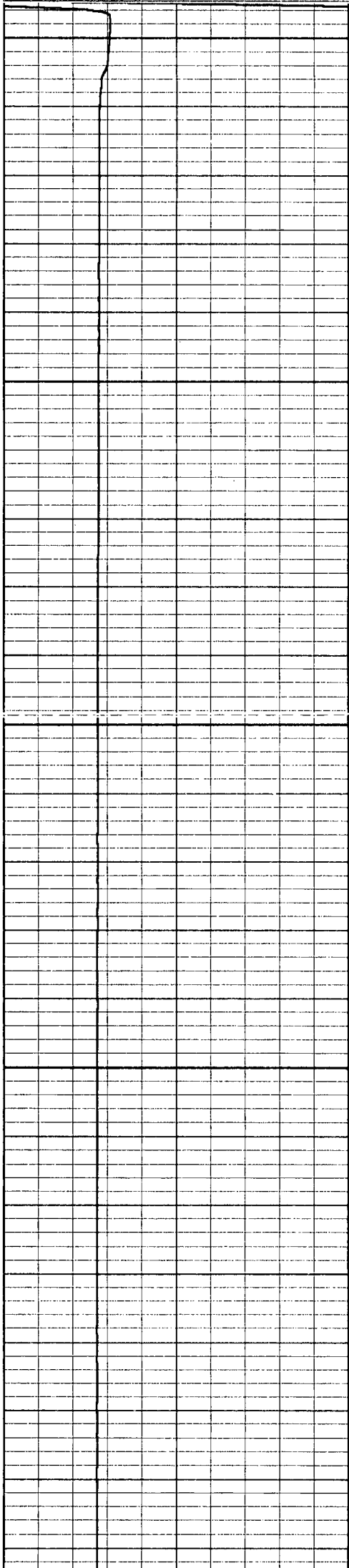


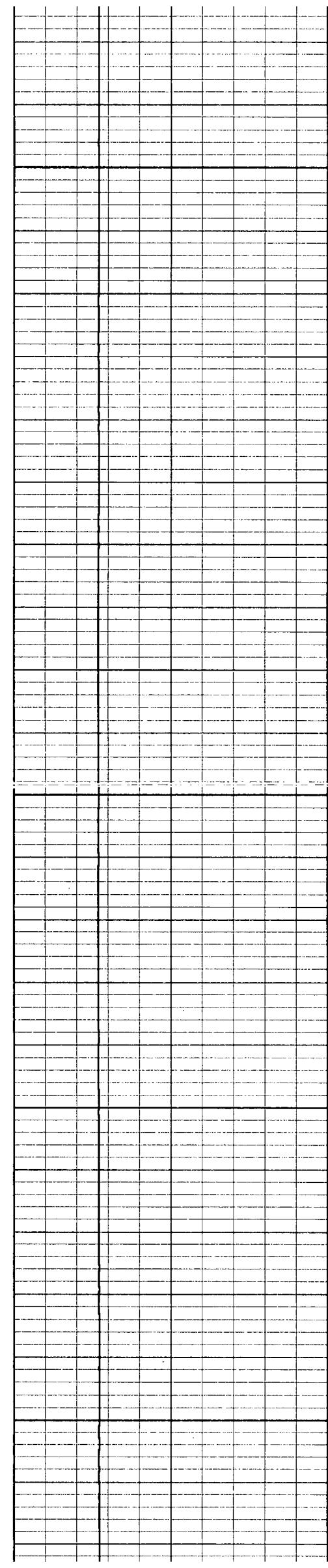
# TEMPERATURE

Database File: lehirts.db  
 Dataset Pathname: TEMP  
 Presentation Format: temp  
 Dataset Creation: Mon Mar 31 16:01:01 2008 by Log 6.2\_B4  
 Charted by: Depth in Feet scaled 1:240

-1 Delta Temperature (degF) 1

Temperature (degF)





250

80.9

80.8

300

80.8

80.8

350

80.8

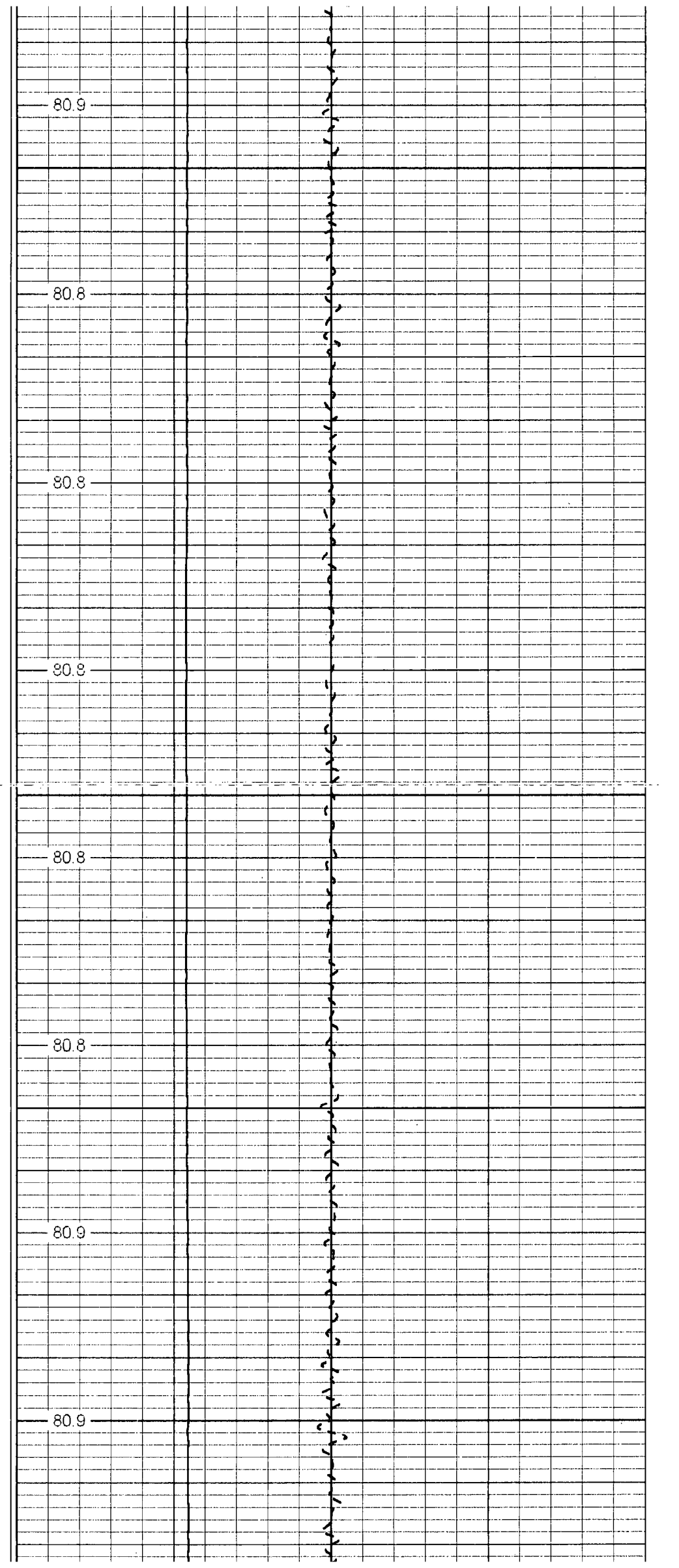
80.8

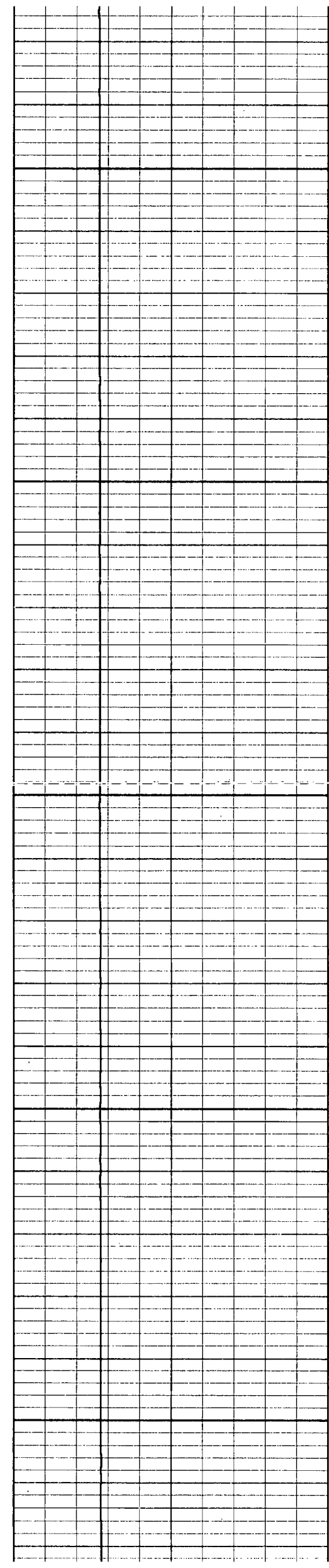
400

80.9

450

80.9





500

80.9

81.0

550

81.0

81.0

600

81.0

81.1

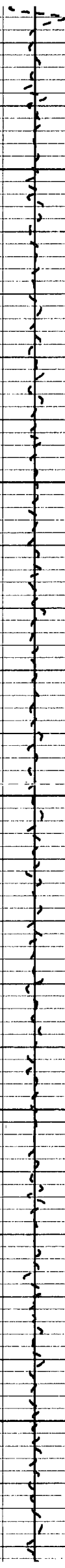
650

81.1

700

81.1

81.2





750

81.1

800

81.2

81.2

850

81.3

81.3

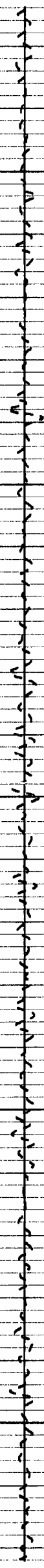
900

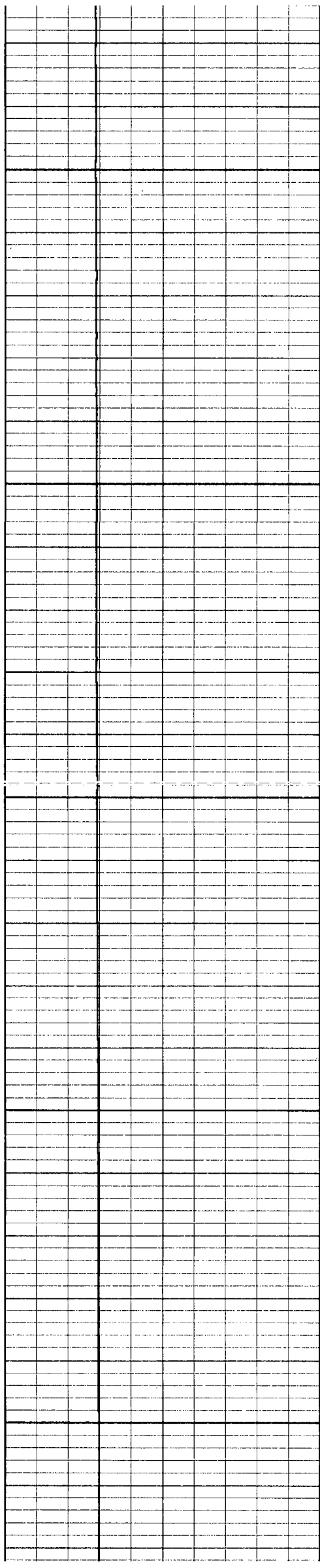
81.4

81.4

950

81.5





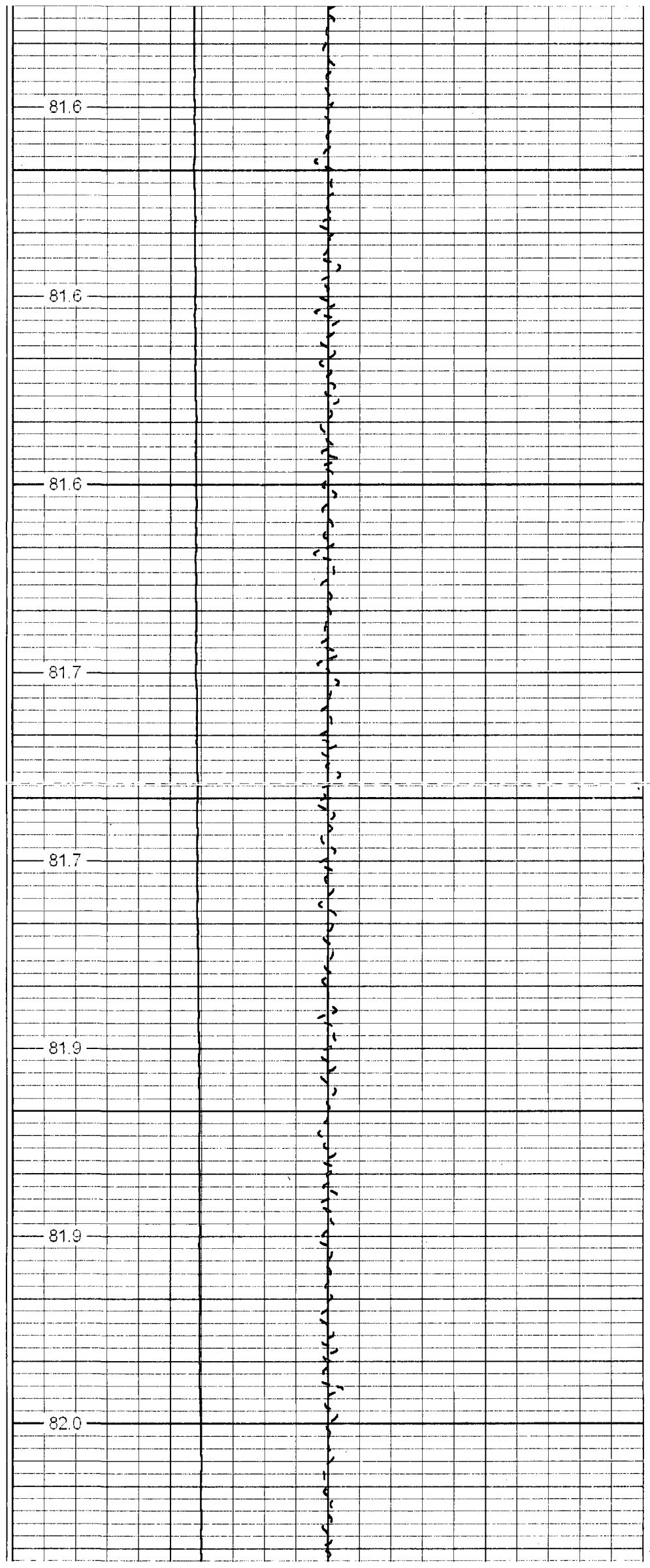
1000

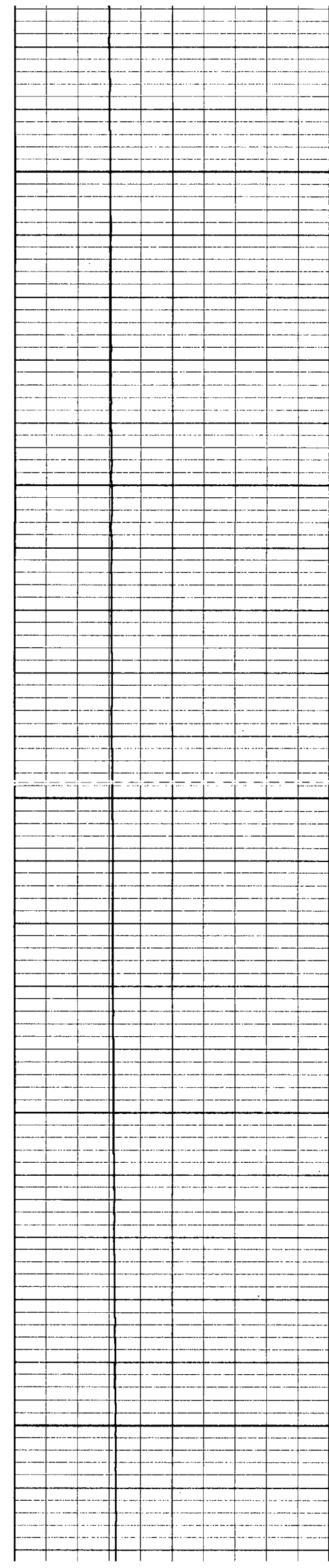
1050

1100

1150

1200





1250

82.0

82.2

1300

82.2

82.3

1350

82.5

82.5

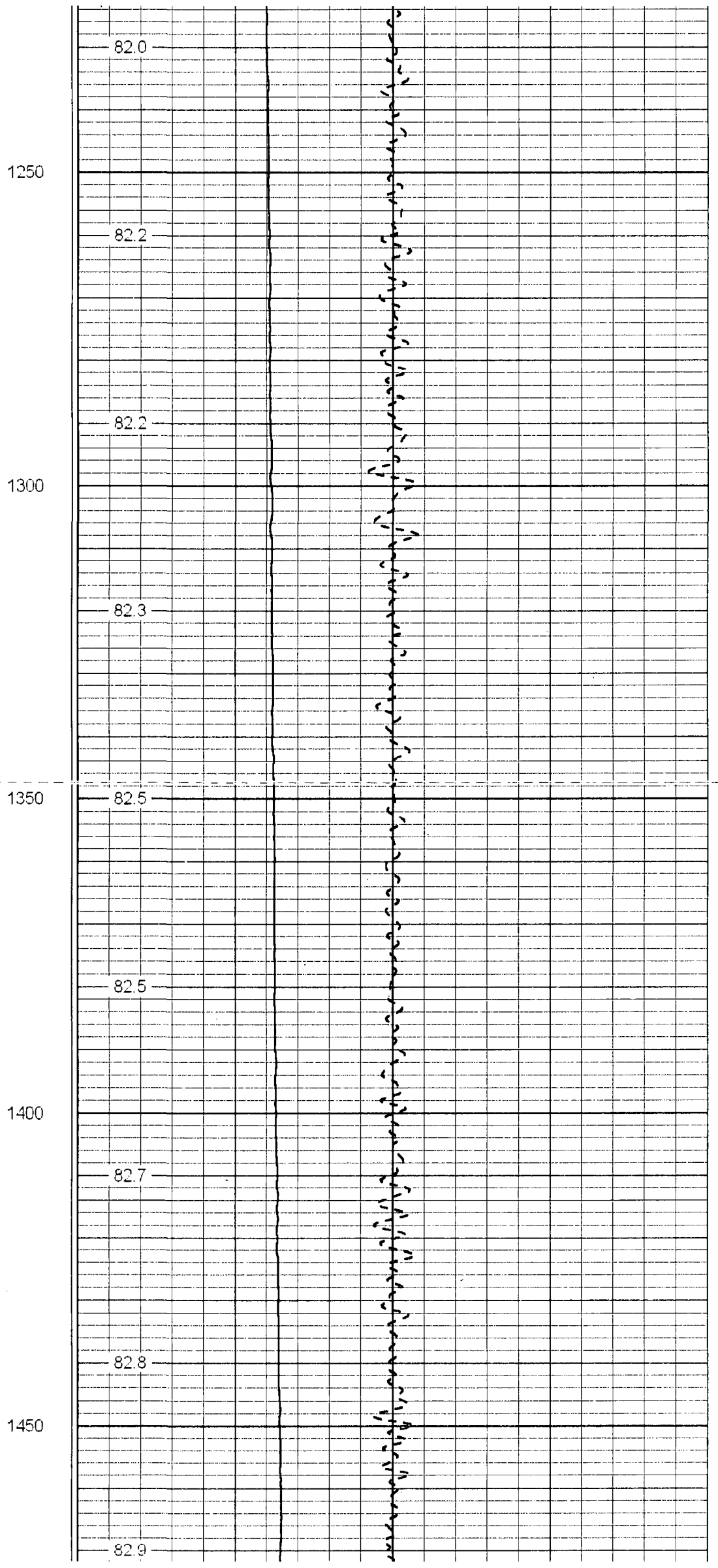
1400

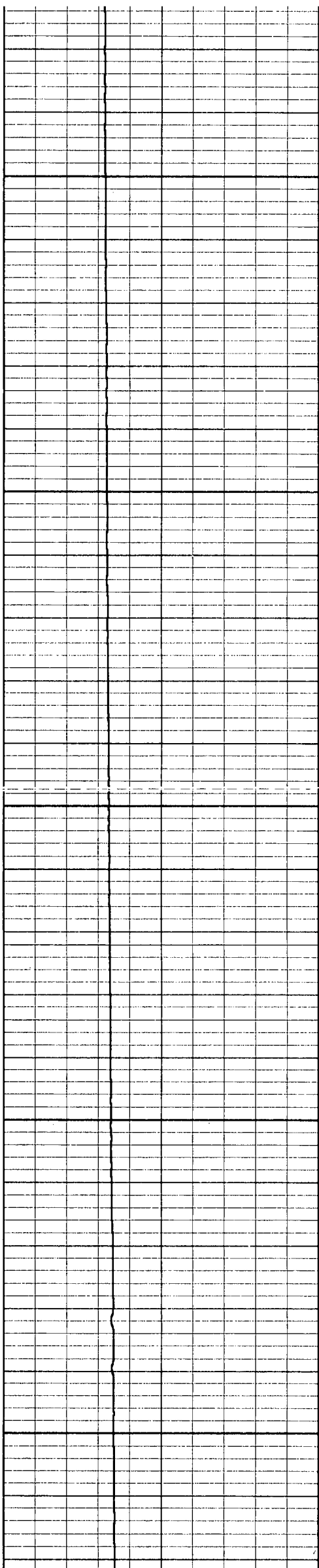
82.7

82.8

1450

82.9





1500

82.9

83.1

1550

83.2

83.4

1600

83.5

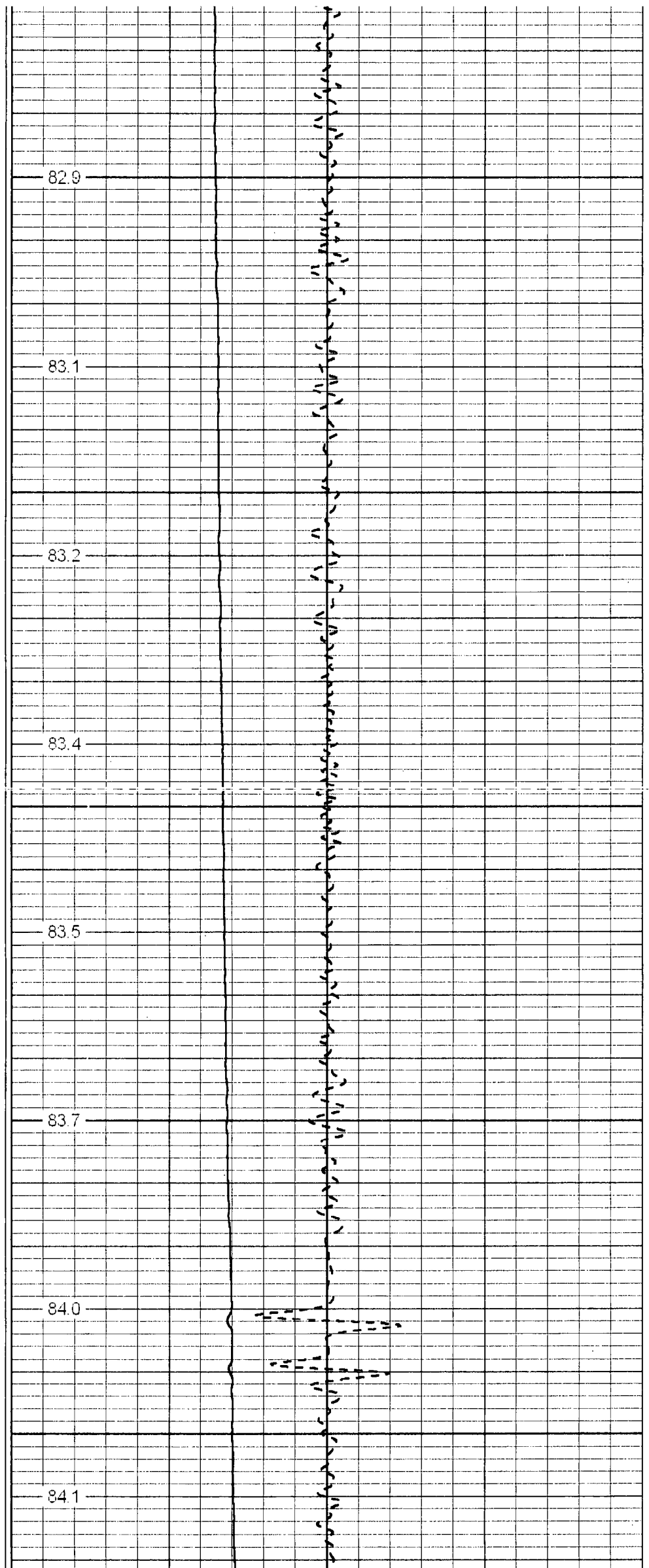
1650

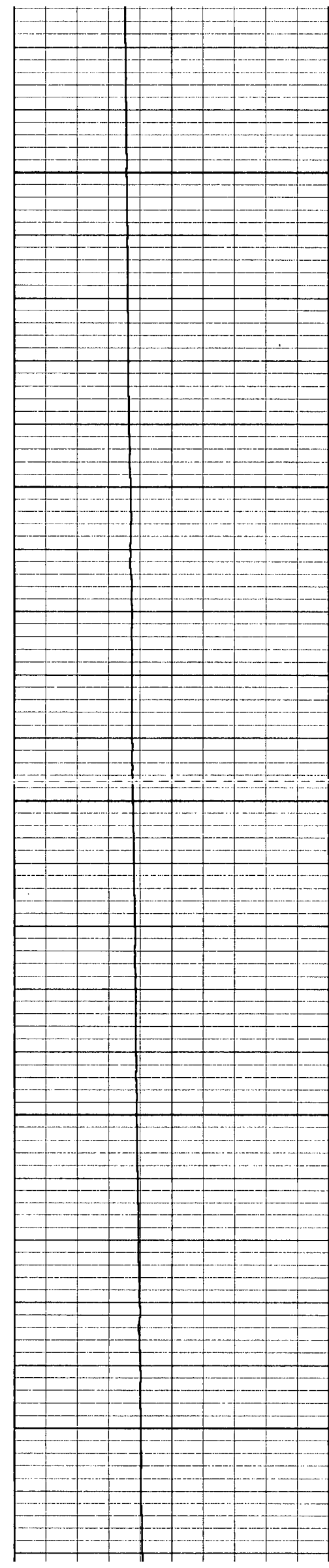
83.7

84.0

1700

84.1





1750

84.3

84.5

1800

84.8

85.0

1850

85.3

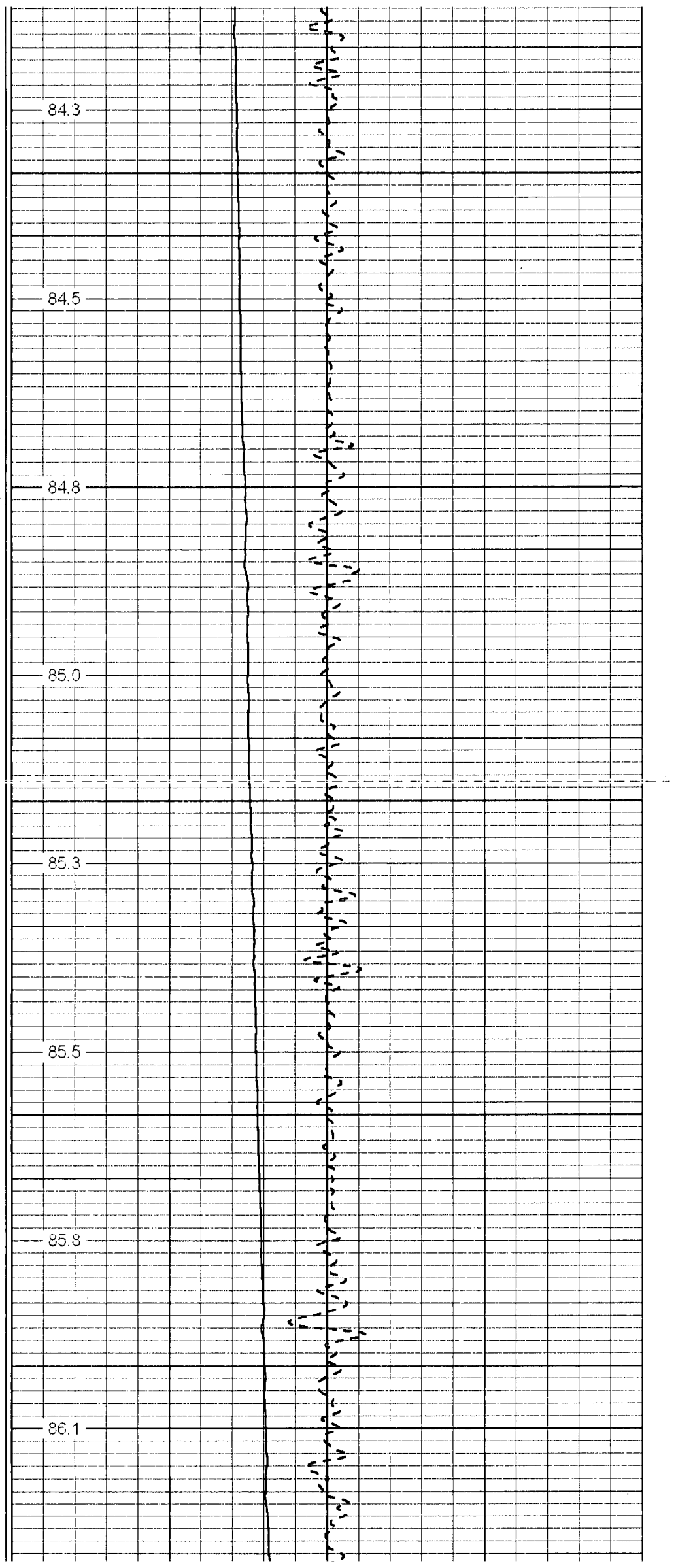
85.5

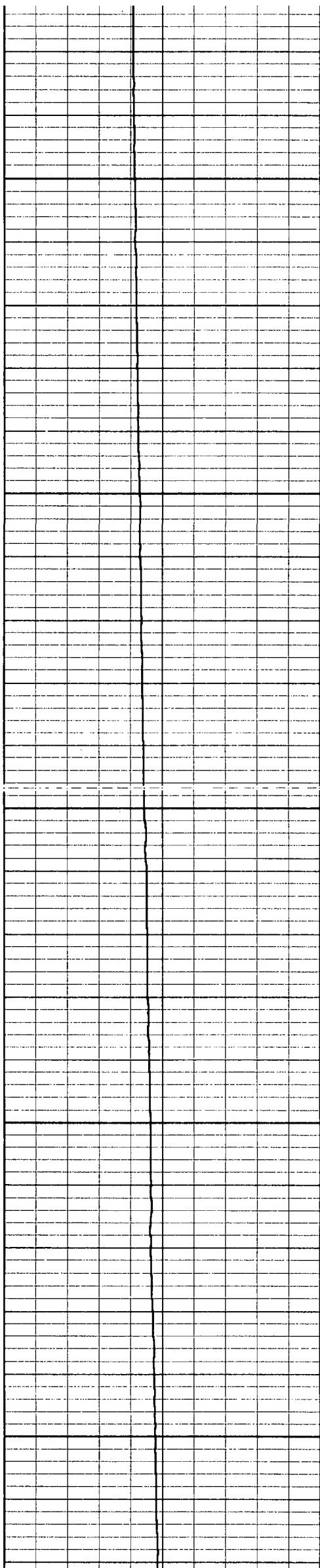
1900

85.8

1950

86.1





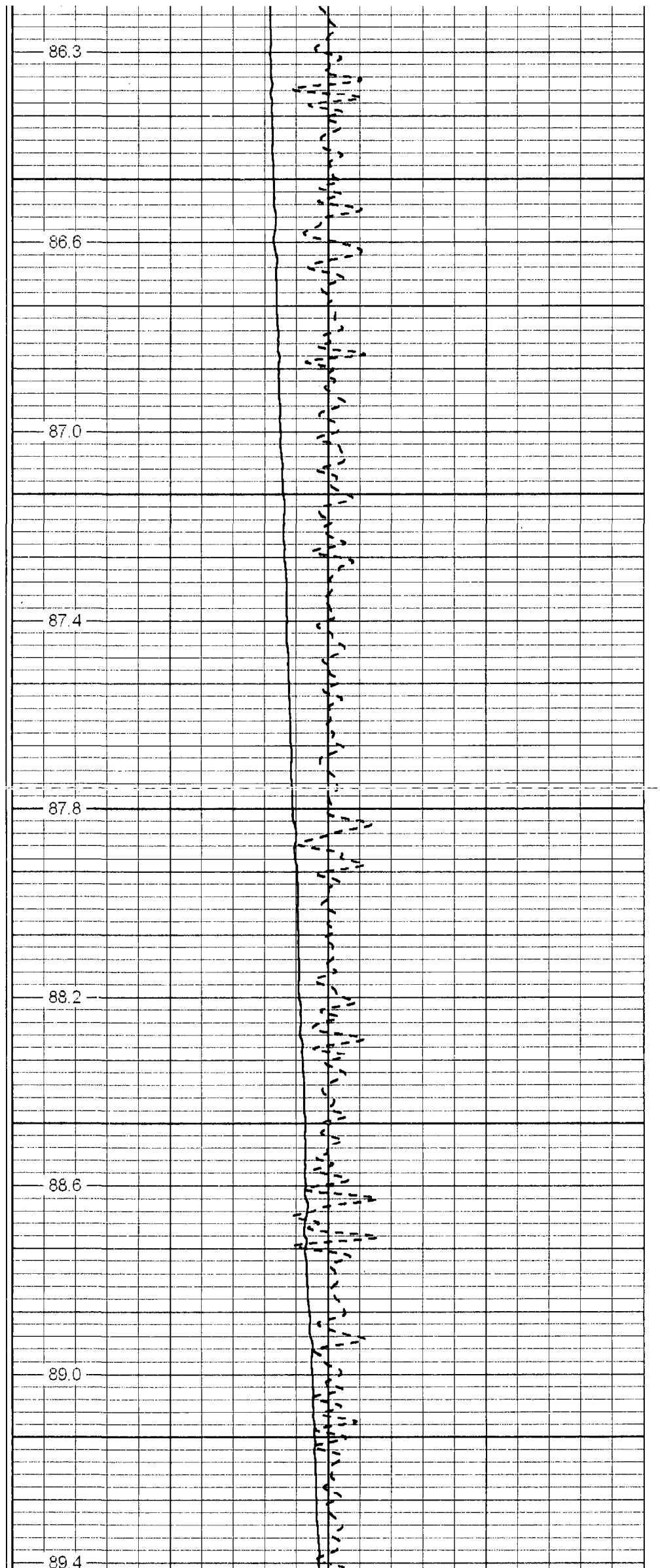
2000

2050

2100

2150

2200



86.3

86.6

87.0

87.4

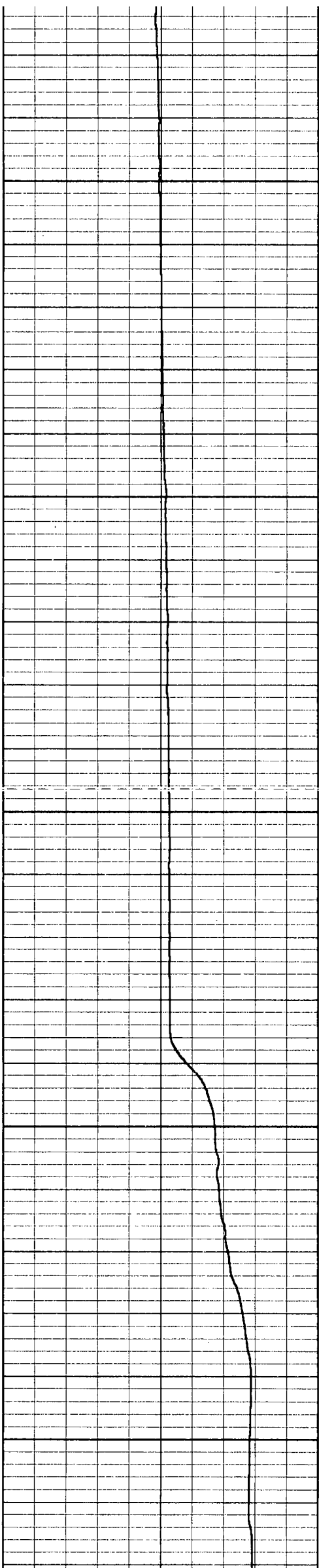
87.8

88.2

88.6

89.0

89.4



2250

2300

2350

2400

2450



89.8

90.2

90.8

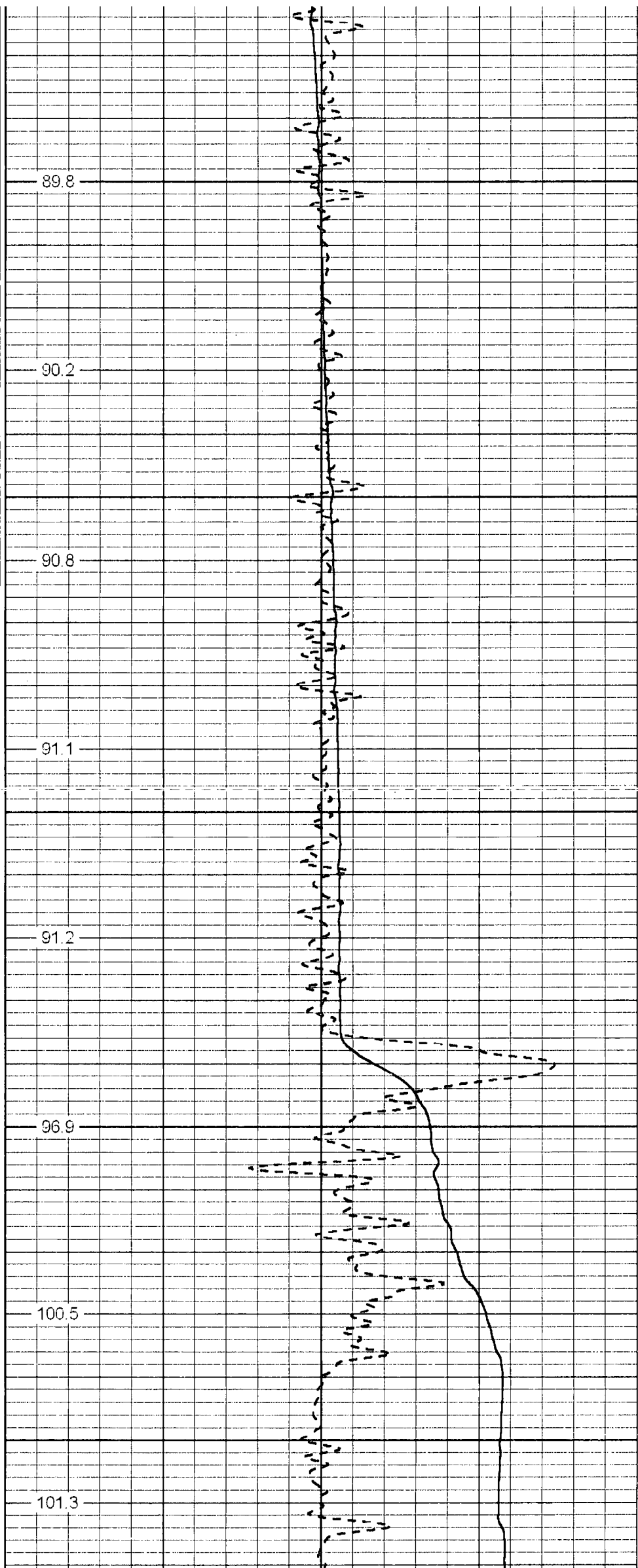
91.1

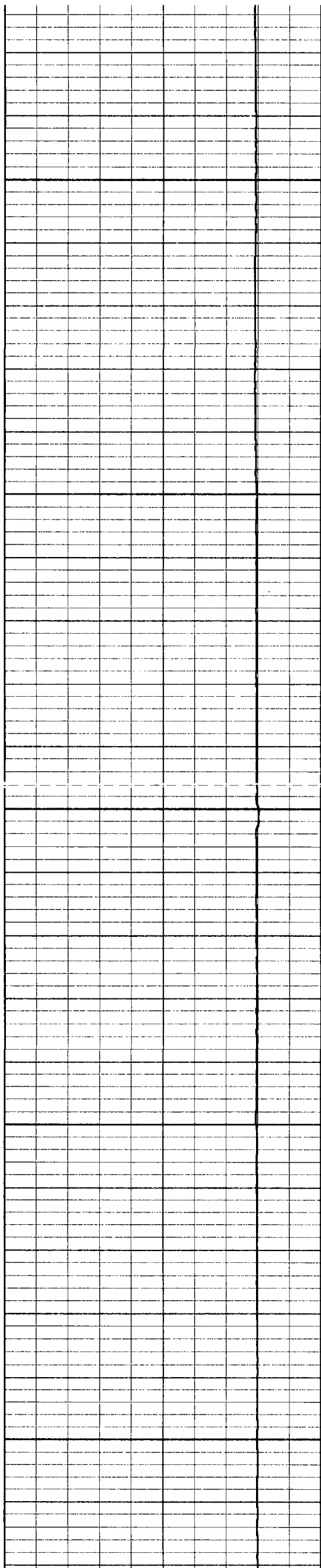
91.2

96.9

100.5

101.3





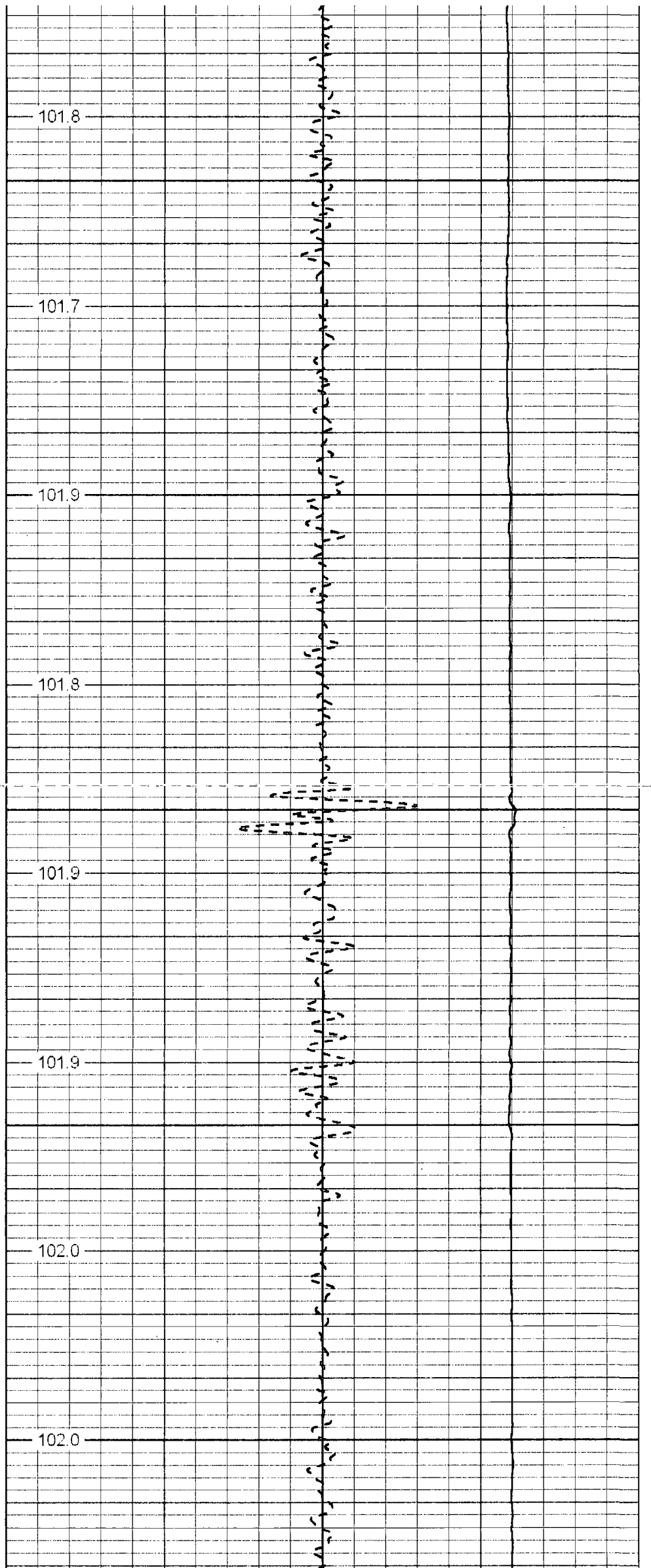
2500

2550

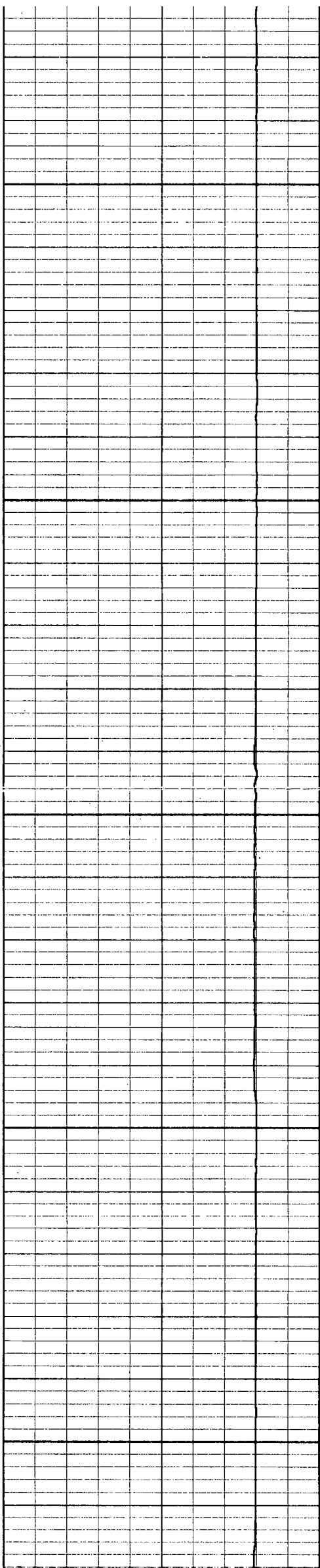
2600

2650

2700







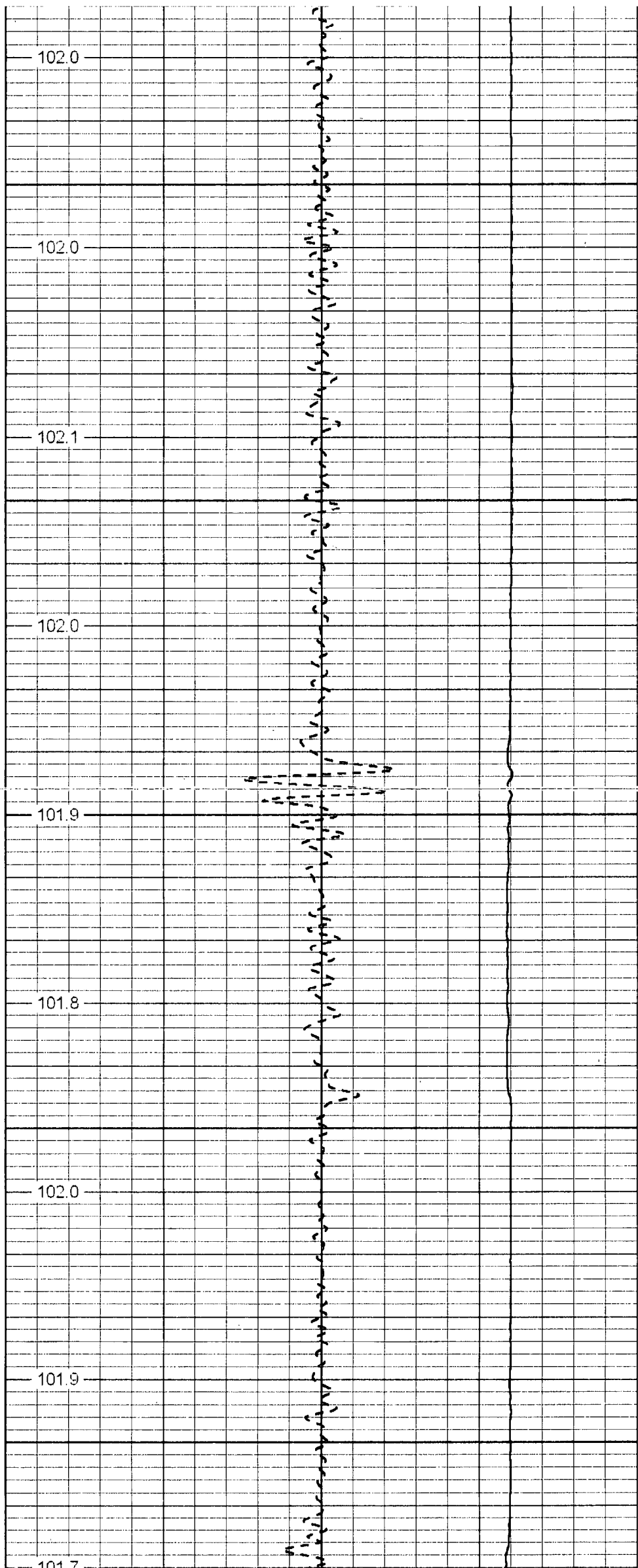
2750

2800

2850

2900

2950



102.0

102.0

102.1

102.0

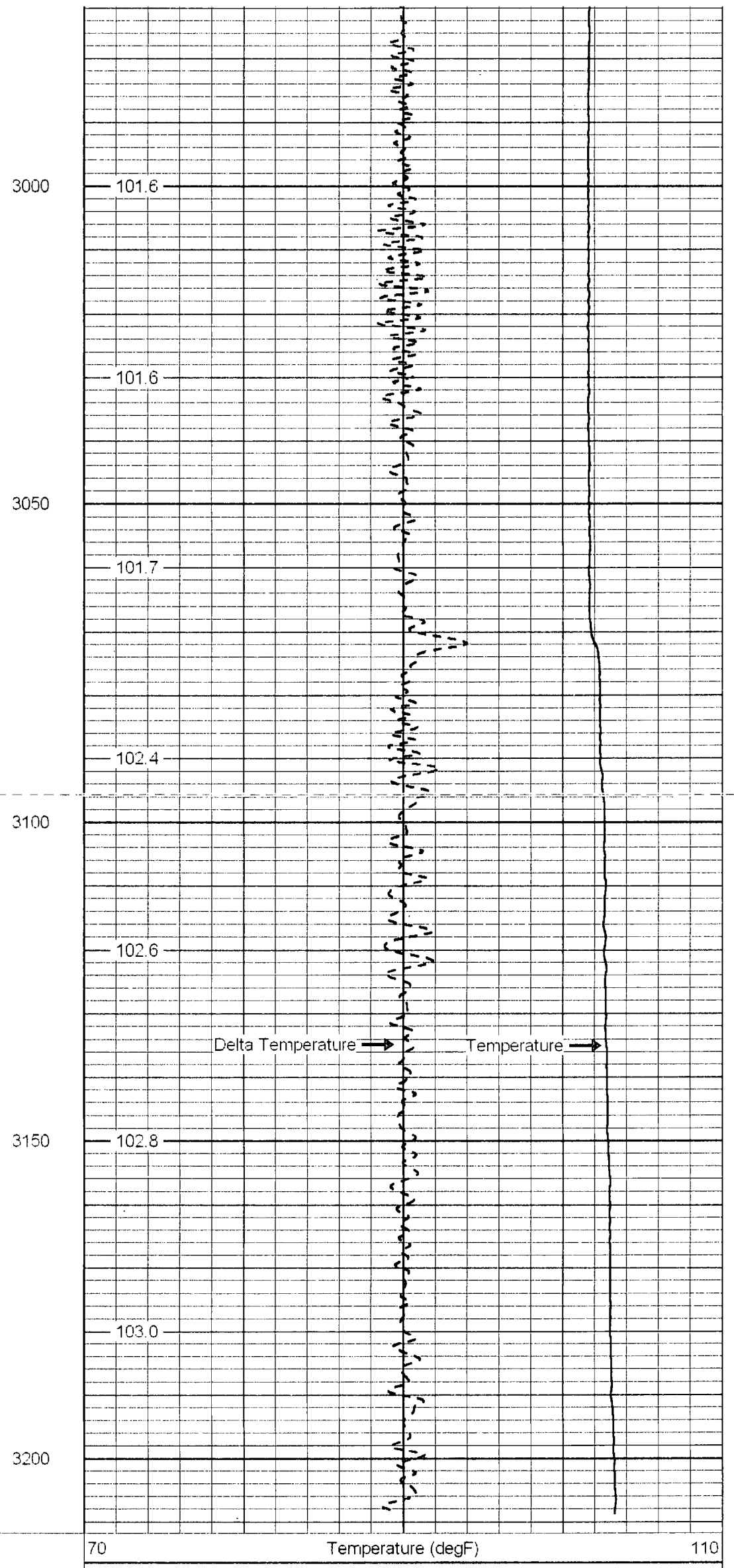
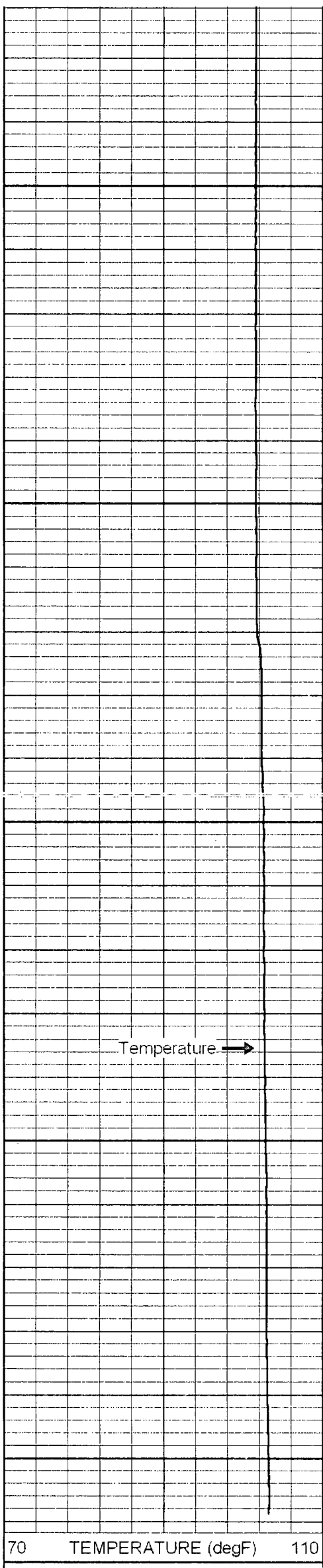
101.9

101.8

102.0

101.9

101.7



Temperature  
(degF)

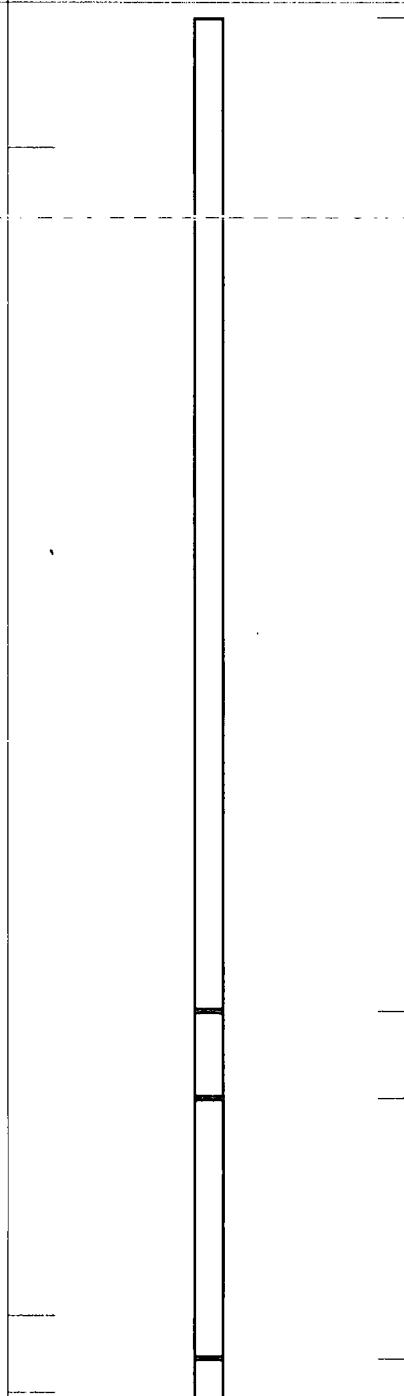
Calibration Report

Database File: lehirts.db  
 Dataset Pathname: TEMP  
 Dataset Creation: Mon Mar 31 16:01:01 2008 by Log 6.2\_B4

Temperature Calibration Report

Serial Number: 952  
 Tool Model: RTS  
 Performed: Tue May 31 07:53:57 2005

| Point # | Reading |     | Reference |      |
|---------|---------|-----|-----------|------|
| 1       | 421     | cps | 42        | degF |
| 2       | 831.5   | cps | 83        | degF |
| 3       | 1472.5  | cps | 147       | degF |
| 4       |         | cps |           | degF |
| 5       |         | cps |           | degF |
| 6       |         | cps |           | degF |
| 7       |         | cps |           | degF |
| 8       |         | cps |           | degF |
| 9       |         | cps |           | degF |
| 10      |         | cps |           | degF |

| Sensor | Offset (ft) | Schematic  | Description         | Len (ft) | OD (in) | Wt (lb) |
|--------|-------------|--|---------------------|----------|---------|---------|
| GR#3   | 24.00       |  | GR #3 -RTST (952T)  | 11.50    | 1.69    | 30.00   |
|        |             |  | TREJCT-A (952)      | 1.00     | 1.69    | 10.00   |
|        |             |  | GR #2 -RTSM (952M)  | 3.00     | 1.69    | 10.00   |
| GR#2   | 10.50       |  |                     |          |         |         |
| CCL    | 9.60        |  | CCL-1.68GRRTS (952) | 0.75     | 1.69    | 10.00   |

GR

1.20



GR-RTSB (952B)

9.25

1.69

10.00

Dataset: lehirts.db: field/well/run1/RTSFIN  
Total Length: 25.50 ft  
Total Weight: 70.00 lb  
O.D.: 1.69 in

