



**FLUID RESISTIVITY
/ TEMPERATURE
LOG**

Company **WELL WATER SYS., INC.**
Well **WINKLER AVE. ASR WELL**
Field **FT. MYERS**
Country **LEE**
State/Prv **FLORIDA**

Company **WELL WATER SYSTEMS, INC.**
Well **WINKLER AVENUE ASR WELL**
Field **FT. MYERS**
Country **LEE**
State/Prv **FLORIDA**

Location
WINKLER AVENUE STORAGE TANK

Flowmeter
**DIL/LL3/SP
FLOW, DHTV**

Permanent Datum	G.L.	Elevation	K.B.
Log Measured From	G.L.		D.F.
Drilling Measured From	G.L.		G.L.

Date	9-JUNE-99 S	
Run Number	FIVE	
Depth Driller	647'	
Depth Logger	644'	
Bottom Logged Interval	643'	
Top Log Interval	0'	
Open Hole Size	9.625"	
Type Fluid	WATER	
Density / Viscosity	N/A/N/A	
Max. Recorded Temp.	86 degF	
Estimated Cement Top	NA	
Time Well Ready	09:00 6-9	
Time Logger on Bottom	12:00 6-9	
Equipment Number	MVGS-1	
Location	FT.MYERS	
Recorded By	MILLER/VINCENT	
Witnessed By	M.SCHILLING/B.NORRIS	

Borehole Record				Tubing Record			
Run Number	Bit	From	To	Size	Weight	From	To
ONE	9.625"	SURFACE	121.75'	FIVE	9.625"	CSG 453'	647'
TWO	28"	SURFACE	94'				
THREE	9.625"	91' SCG	554'				
FOUR	19"	CSG 91'	457'				

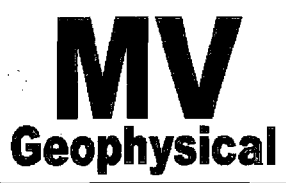
Casing Record	Size	Wgt/Ft	Top	Bottom
Surface String	20"	375"	SURFACE	554'
Prot. String	12" OD		11" ID	
Production String			SURFACE	
Liner				

<<< Fold Here >>>

All interpretations are opinions based on inferences from electrical or other measurements and we cannot and do not guarantee the accuracy or correctness of any interpretation, and we shall not, except in the case of gross or willful negligence on our part, be liable or responsible for any loss, costs, damages, or expenses incurred or sustained by anyone resulting from any interpretation made by any of our officers, agents or employees. These interpretations are also subject to our general terms and conditions set out in our current Price Schedule.

Comments

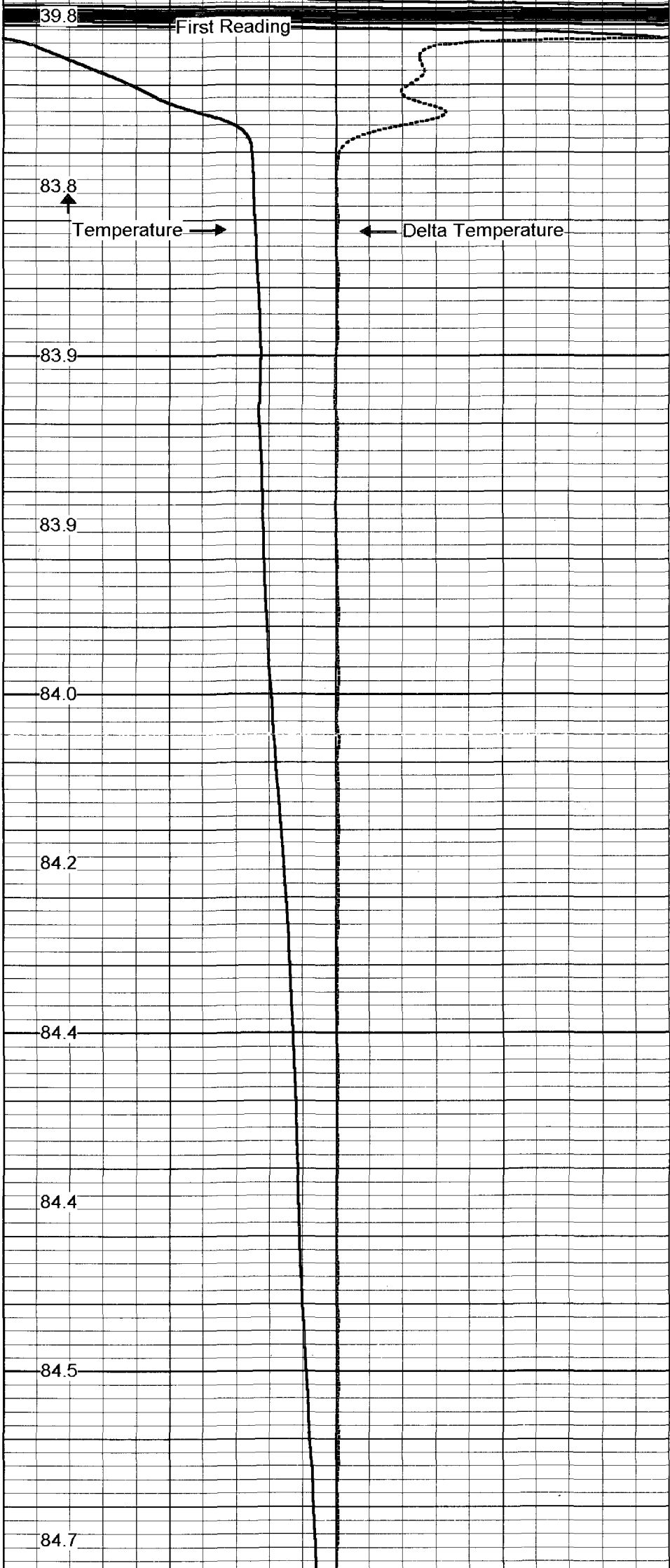
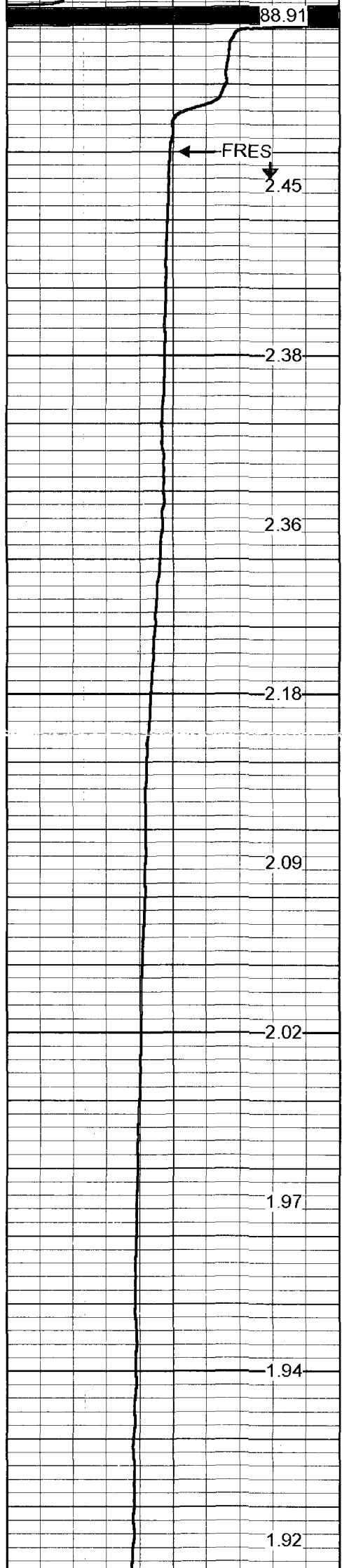
FLUID RESISTIVITY/TEMPERATURE data collected logging down.
Well Status: STATIC 6/9/99
Rm=2.44 ohm-m @ 78.5 degF (6/9/99)

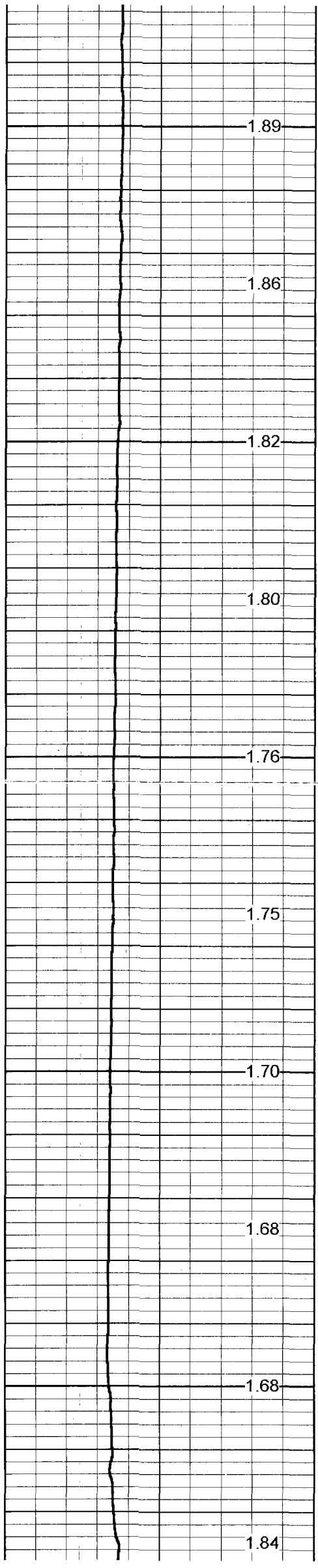


MAIN PASS

Database File: ftmasr.db
Dataset Pathname: run5/pass1.1
Presentation Format: fritemp.prs
Dataset Creation: Wed Jun 09 14:52:39 1999 by Calc VER_5.3
Charted by: Depth in Feet scaled 1:240

Data collected logging down

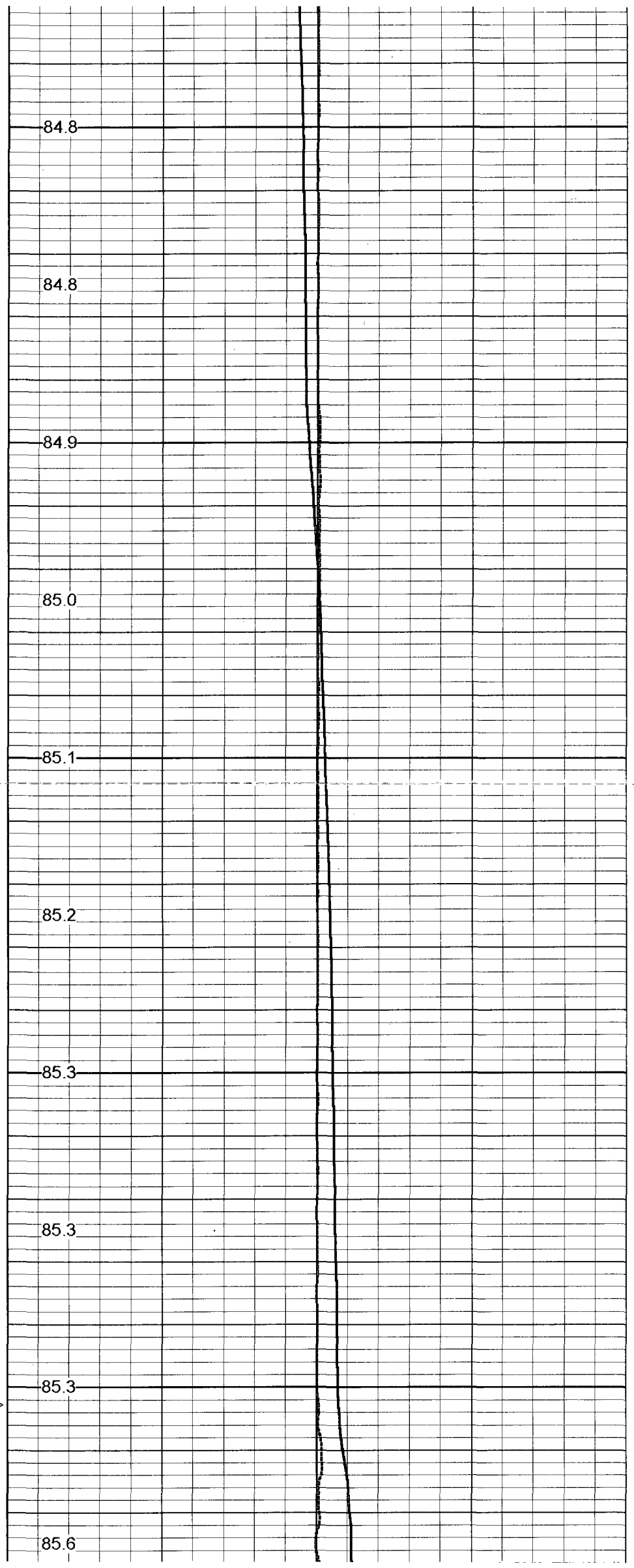


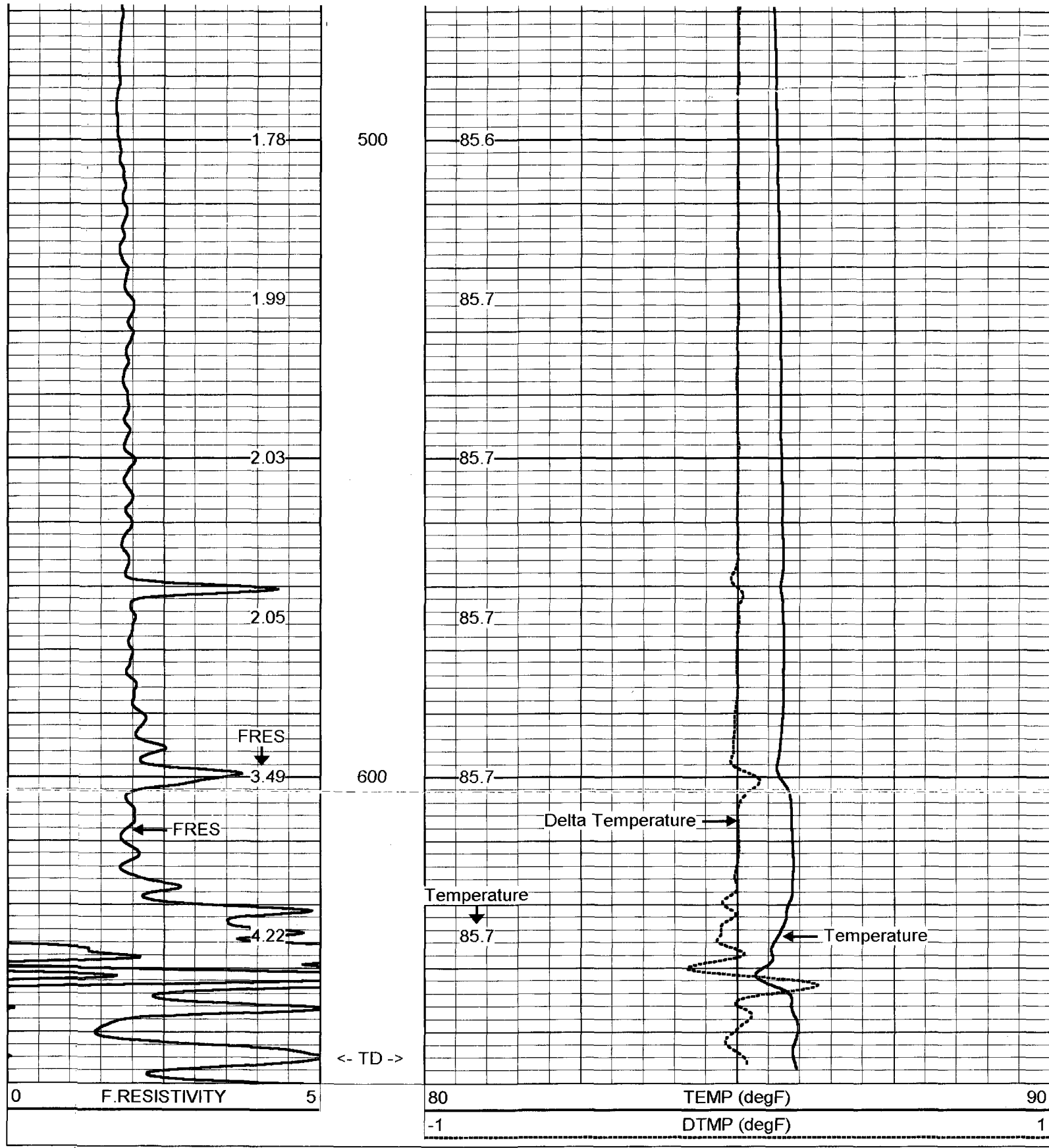


300

400

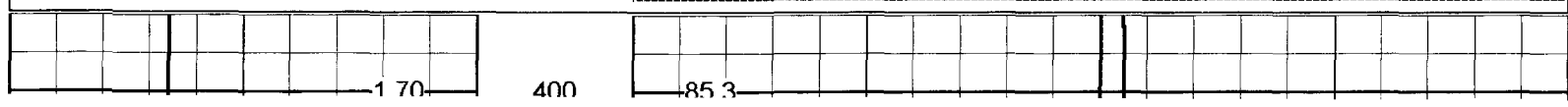
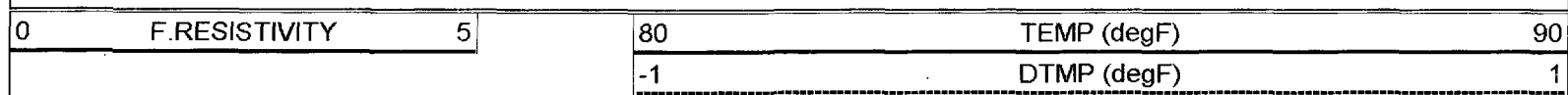
<- CSG ->

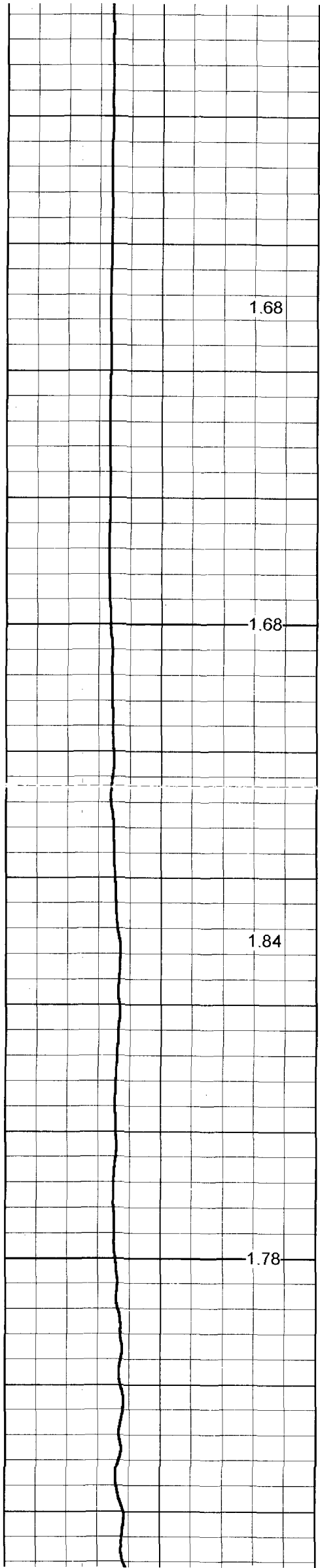




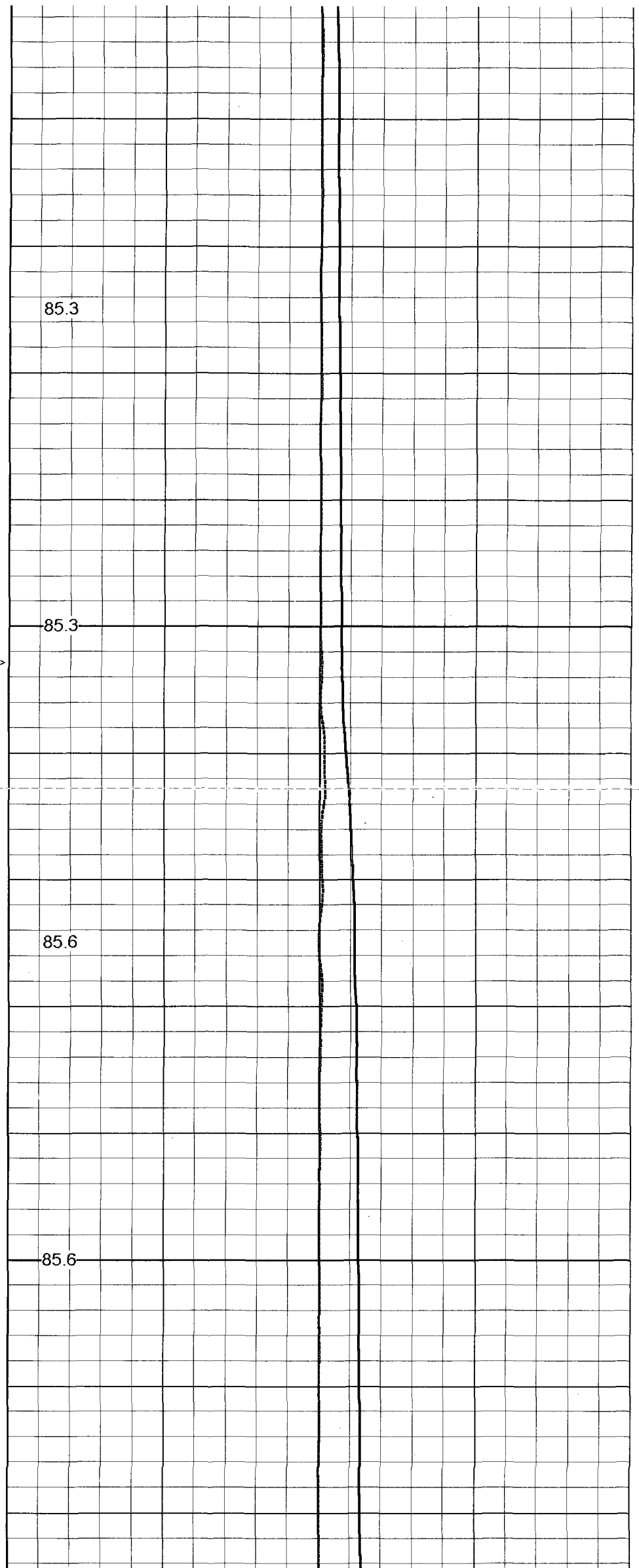
MAIN PASS

Database File: ftmasr.db
 Dataset Pathname: run5/pass1.1
 Presentation Format: frttemp.prs
 Dataset Creation: Wed Jun 09 14:52:39 1999 by Calc VER_5.3
 Charted by: Depth in Feet scaled 1:120

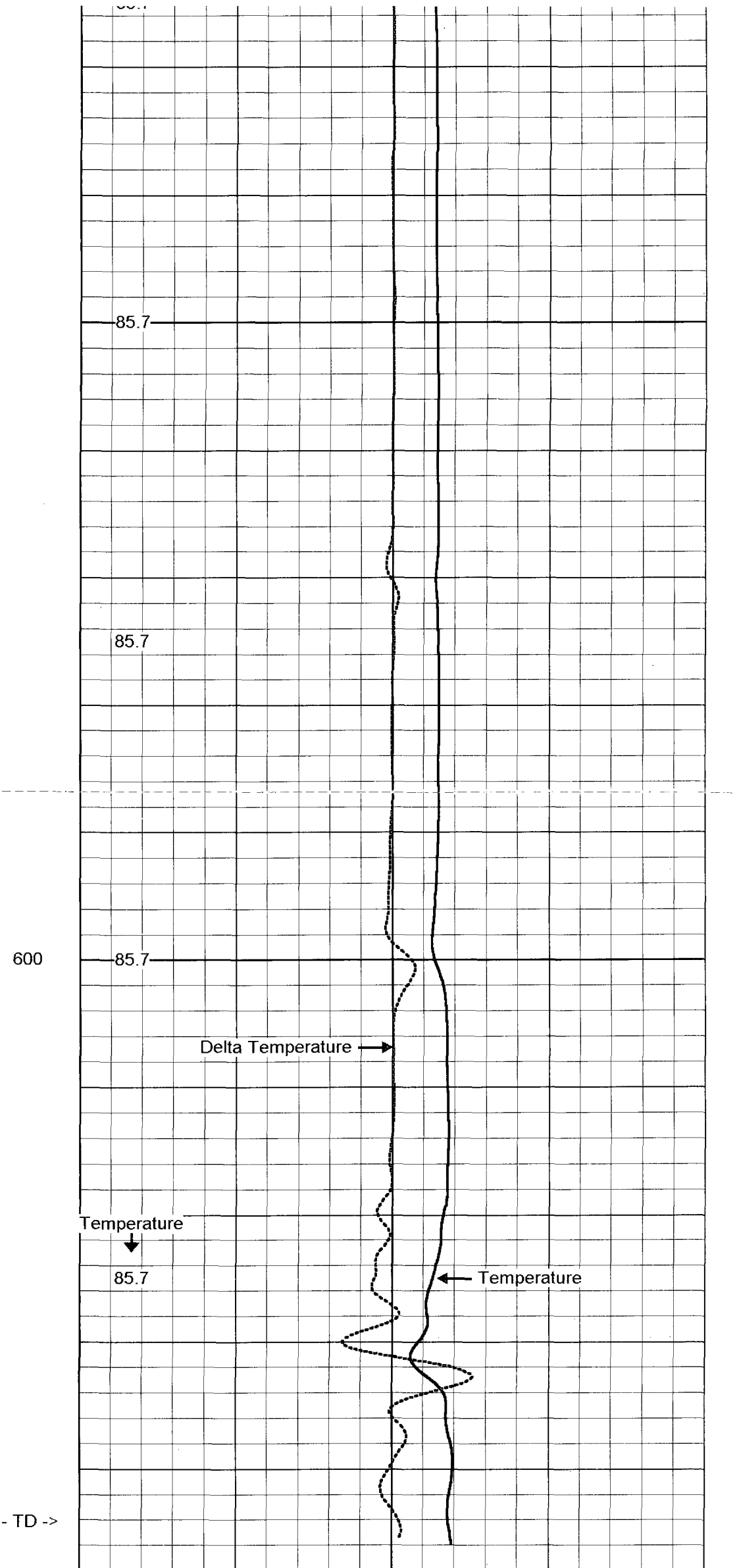
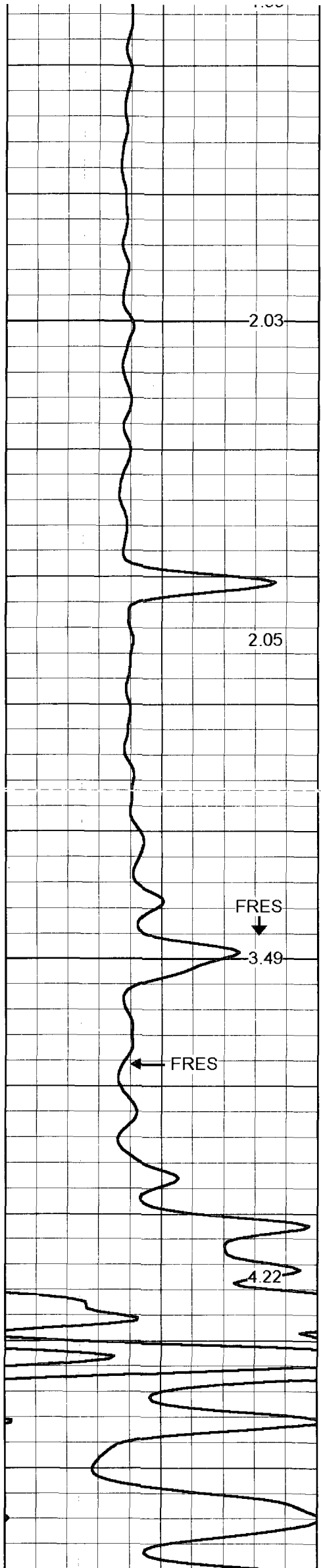




< - CSG - >



500



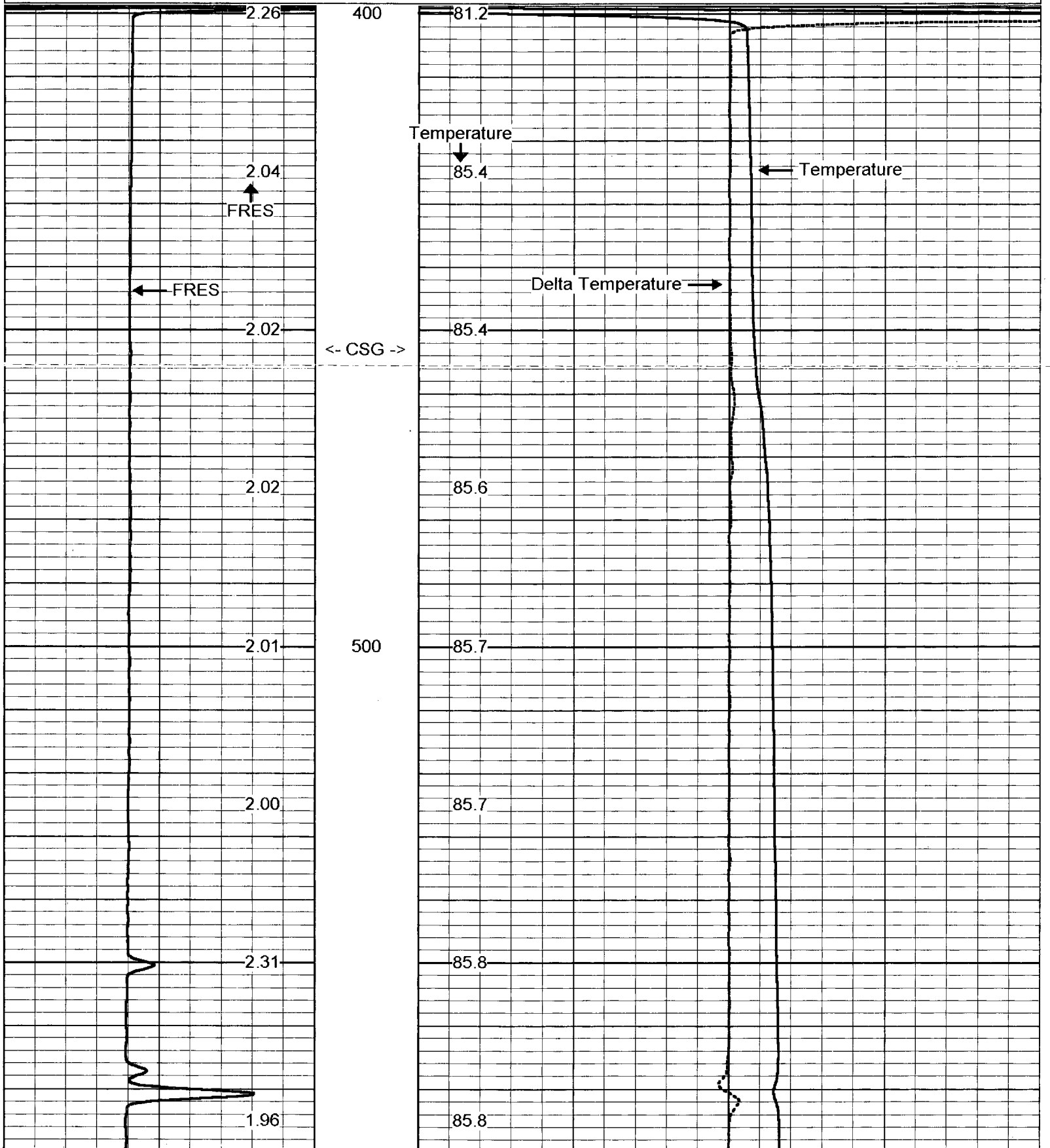
<- TD ->

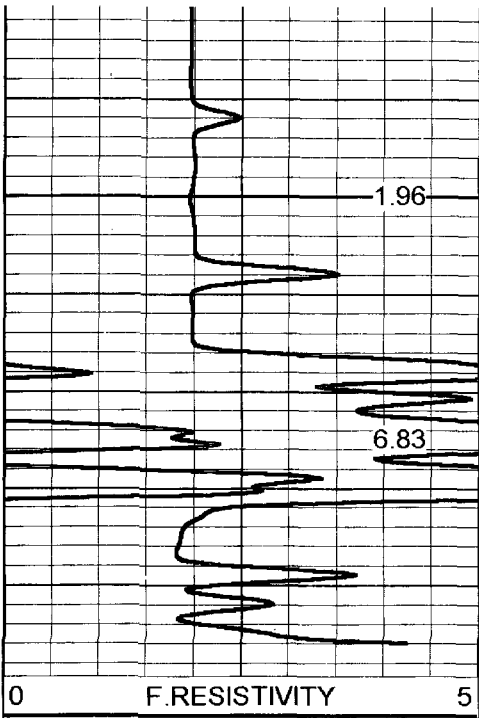


REPEAT SECTION

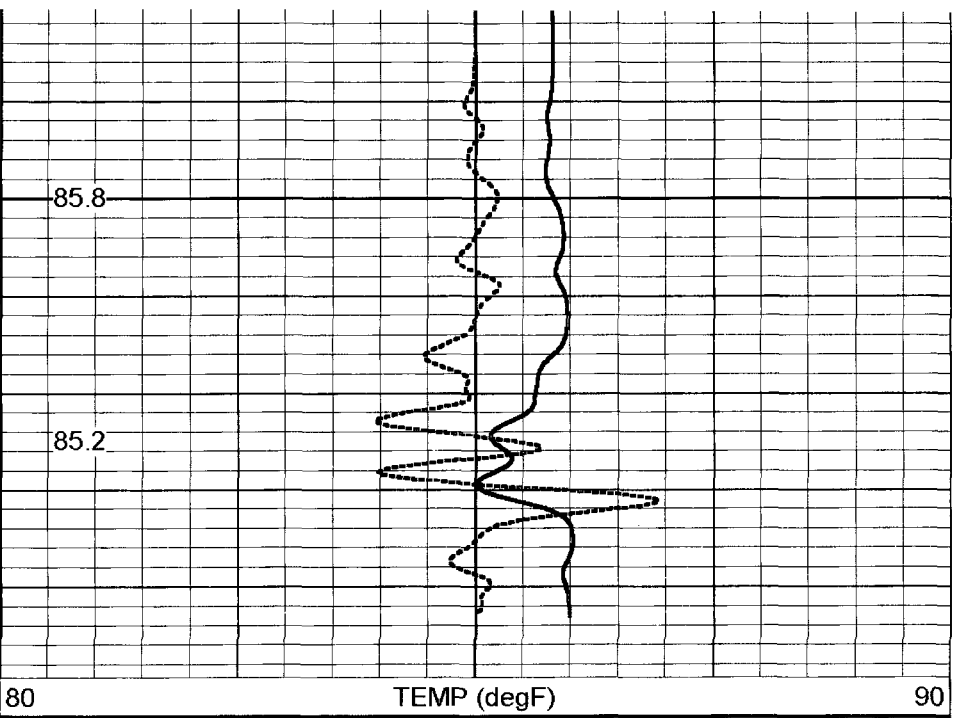
Database File: ftmasr.db
 Dataset Pathname: run5/pass3.2
 Presentation Format: frttemp.prs
 Dataset Creation: Wed Jun 09 15:08:07 1999 by Calc VER_5.3
 Charted by: Depth in Feet scaled 1:240

0 F.RESISTIVITY 5 80 TEMP (degF) 90
 -1 DTMP (degF) 1





600
6.83
-< TD ->



80 85.2 85.8
TEMP (degF) 90
-1 DTMP (degF) 1

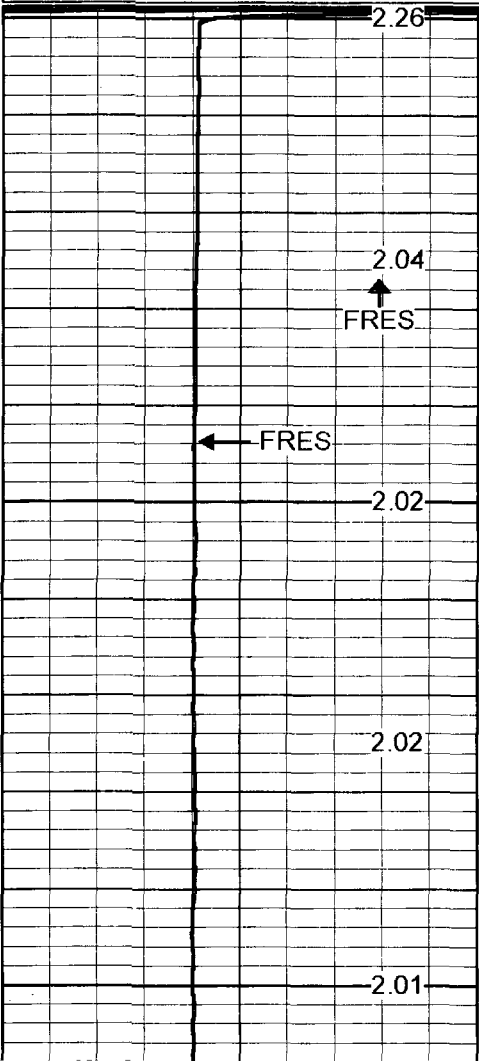


REPEAT SECTION

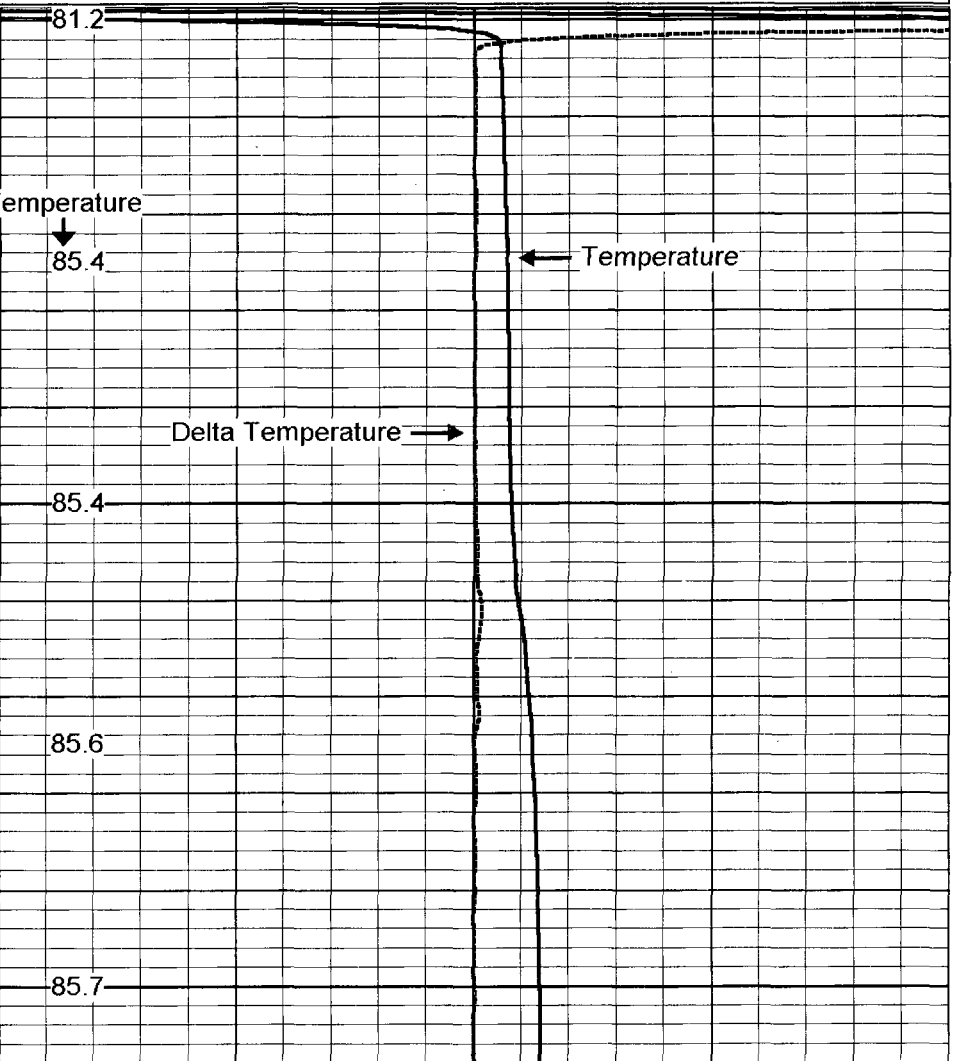
Database File: ftmasr.db
 Dataset Pathname: run5/pass3.2
 Presentation Format: frttemp.prs
 Dataset Creation: Wed Jun 09 15:08:07 1999 by Calc VER_5.3
 Charted by: Depth in Feet scaled 1:240

0 F.RESISTIVITY 5

80 TEMP (degF) 90
-1 DTMP (degF) 1



400
500
-< CSG ->



Temperature
81.2
85.4
85.4
85.6
85.7
Delta Temperature
Temperature

