

**YOUNGQUIST BROTHERS, Inc**  
**RECEIVED**  
**TEMPERATURE LOG**

GEOPHYSICAL LOGGING DIVISION

SEP 2 2 2005  
 D.B.P. - SOUTH DISTRICT

Company **WATER RESOURCES**  
 Well **DZMW #1 (LM-8100)**  
 Field **LCU - PINEWOODS**  
 County **LEE**  
 State **FLORIDA**

Company **WATER RESOURCE SOLUTIONS**  
 Well **DZMW #1 (LM-8100)**  
 Field **LCU - PINEWOODS**  
 County **LEE** State **FLORIDA**

Location **NE NE S25 T46S R25E**

Permanent Datum **PAD** Elevation  
 Log Measured From **PAD**  
 Drilling Measured From **PAD**

Other Services  
**SEE COMMENTS**

Elevation  
 K.B. D.F. 22.75' est  
 G.L. 19'

Date	NOV 28, 2004	
Run Number	THREE	
Depth Driller	1570'	
Depth Logger	1570'	
Bottom Logged Interval	1570'	
Top Log Interval	950'	
Open Hole Size	12.25"	
Type Fluid	WATER	
Density / Viscosity	NA	
Max. Recorded Temp.	NA	
Estimated Cement Top	NA	
Time Well Ready	0600	
Time Logger on Bottom	0600	
Equipment Number	103	
Location	FT. MYERS FERGUSON J. BAGGETT	
Recorded By	D. ACQUAVIVA	
Witnessed By		

Borehole Record		Tubing Record					
Run Number	Bit	From	To	Size	Weight	From	To
ONE	26"	CASING	675'				
TWO	12.25"	CASING	1340'				
THREE	12.25"	CASING	1508'				
FOUR	9"	1508'	1570'				
Casing Record		Size	Wd/Lt			Top	Bottom
Surface String	30"		.375" W.T.			SURFACE	55'
Prod. String	18"		.375" W.T.			SURFACE	670'
Production String							
Liner							

Entered into  
**OCULUS**  
 South District

<<< Fold Here >>>

All interpretations are opinions based on inferences from electrical or other measurements and we cannot and do not guarantee the accuracy or correctness of any interpretation, and we shall not, except in the case of gross or willful negligence on our part, be liable or responsible for any loss, costs, damages, or expenses incurred or sustained by anyone resulting from any interpretation made by any of our officers, agents or employees. These interpretations are also subject to our general terms and conditions set out in our current Price Schedule.

Comments

DUAL INDUCTION  
 BOREHOLE COMPENSATED SONIC  
 X-Y CALIPER  
 FLOWMETER



**TEMPERATURE**

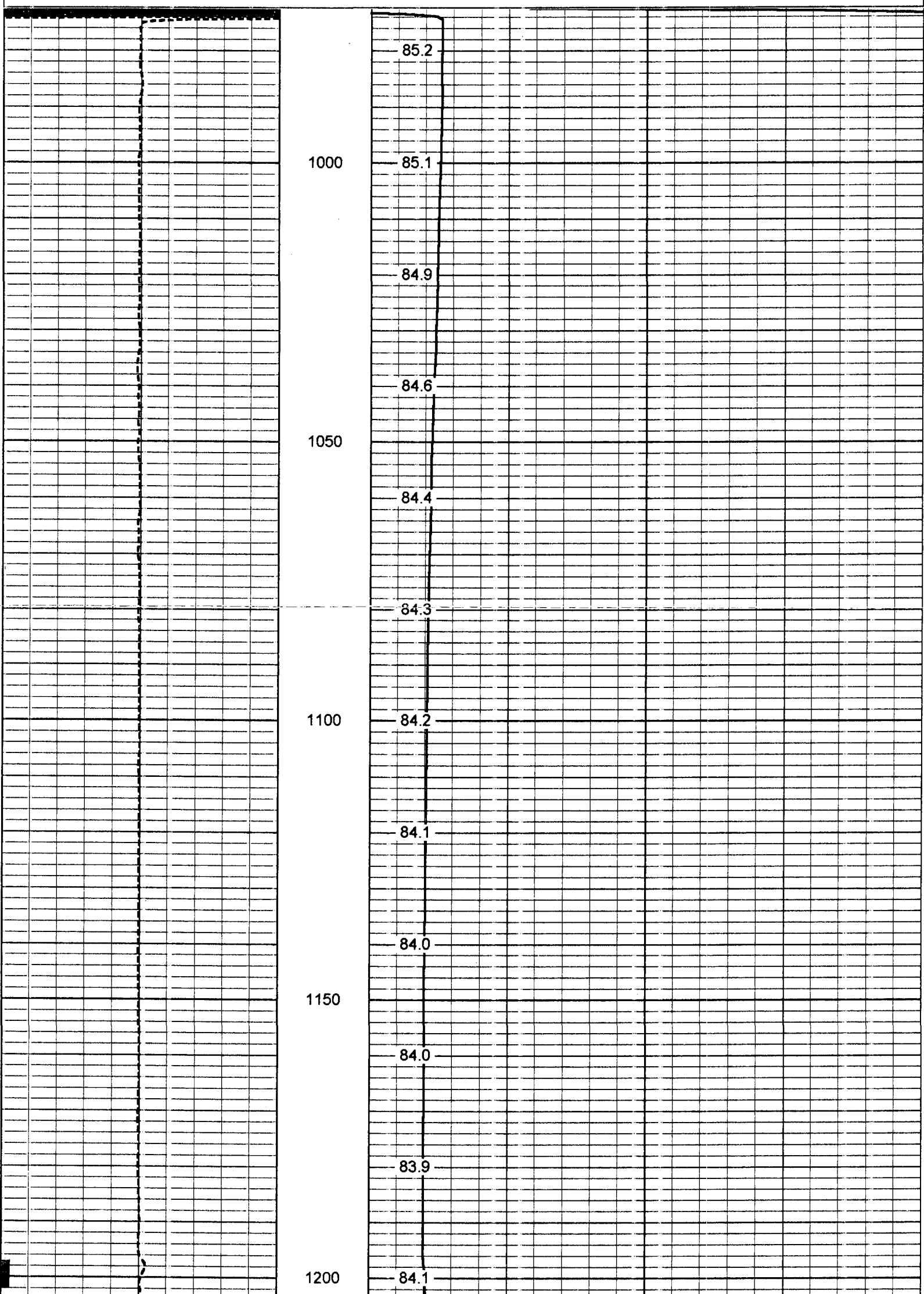
Database File: pwoodmw.db  
 Dataset Pathname: run3/pass1  
 Presentation Format: temp

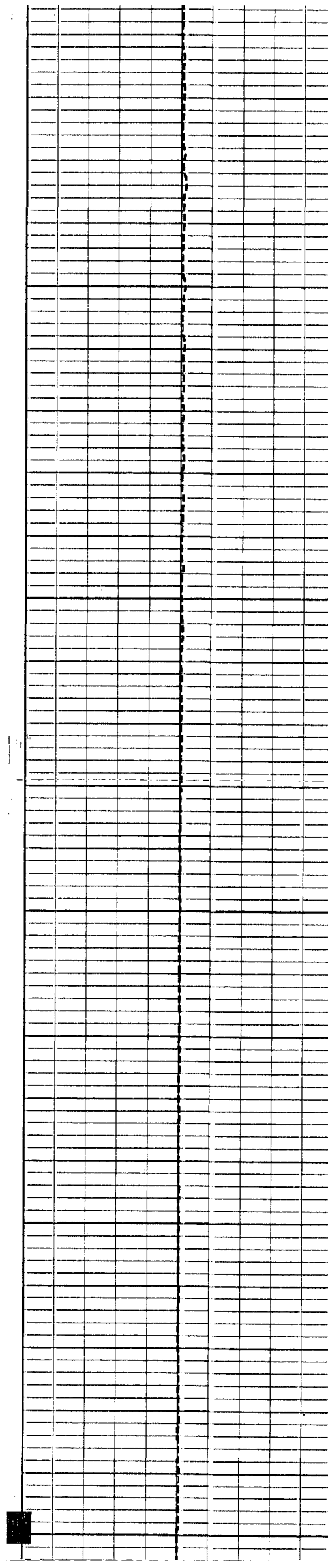
-1 DELTA TEMPERATURE (degF) 1

80

TEMPERATURE (degF)

120





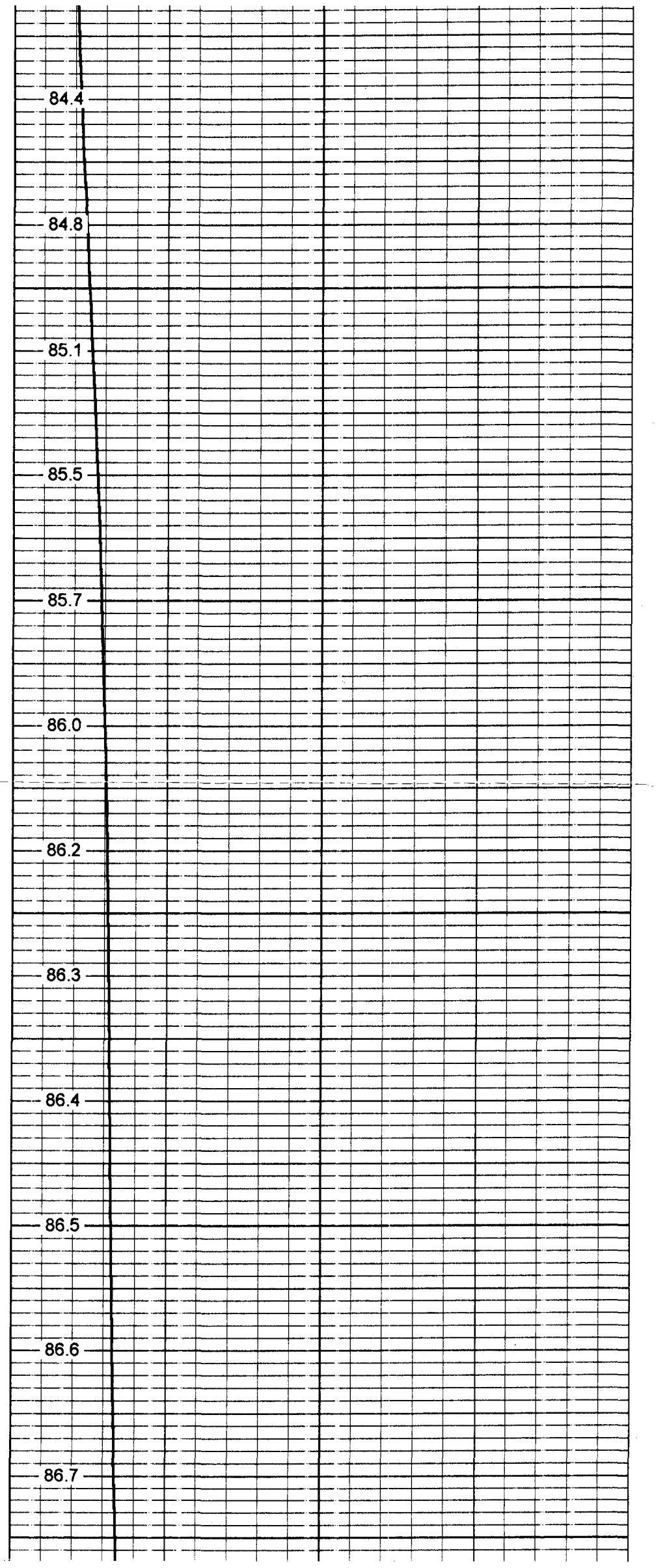
1250

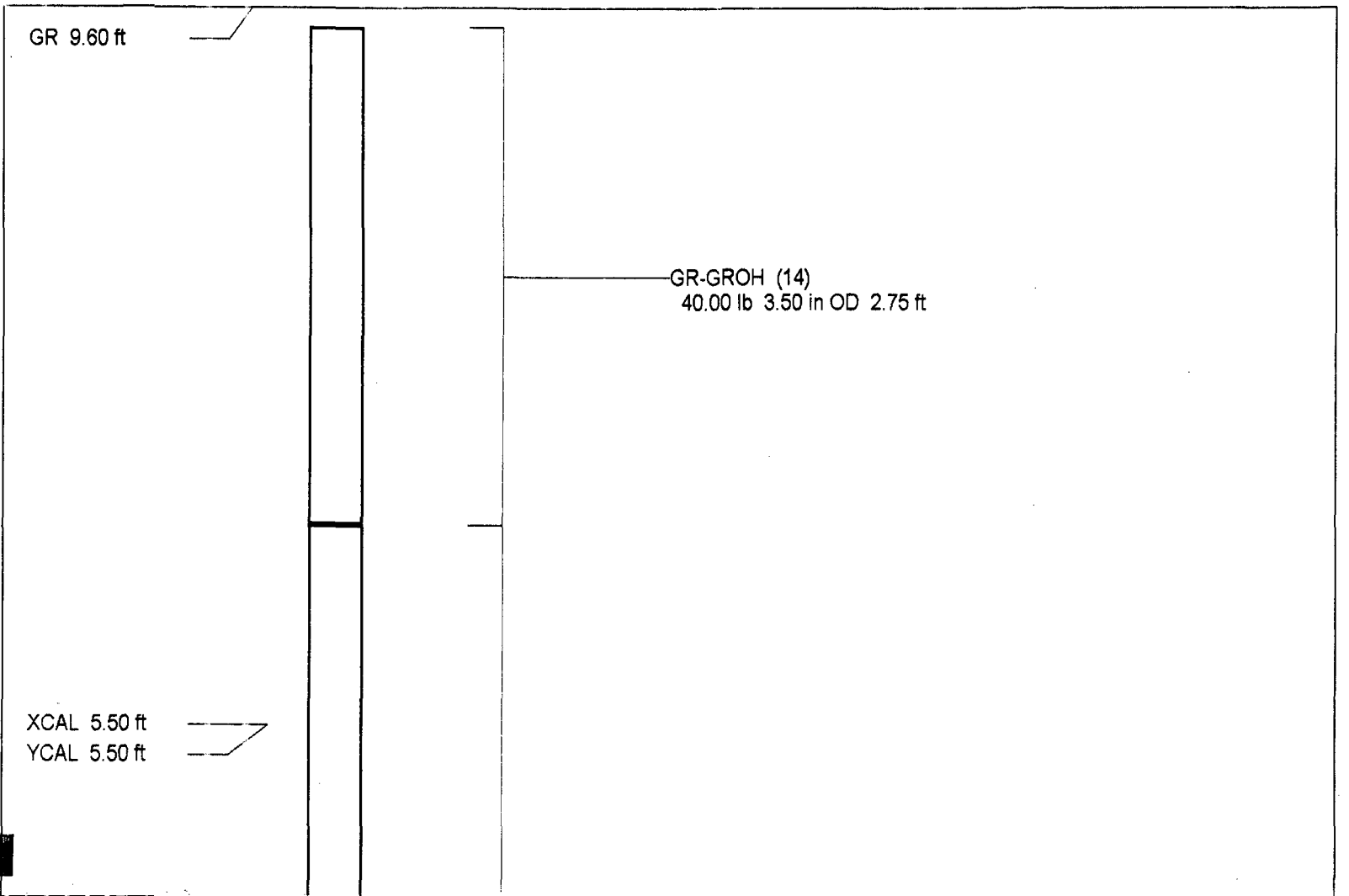
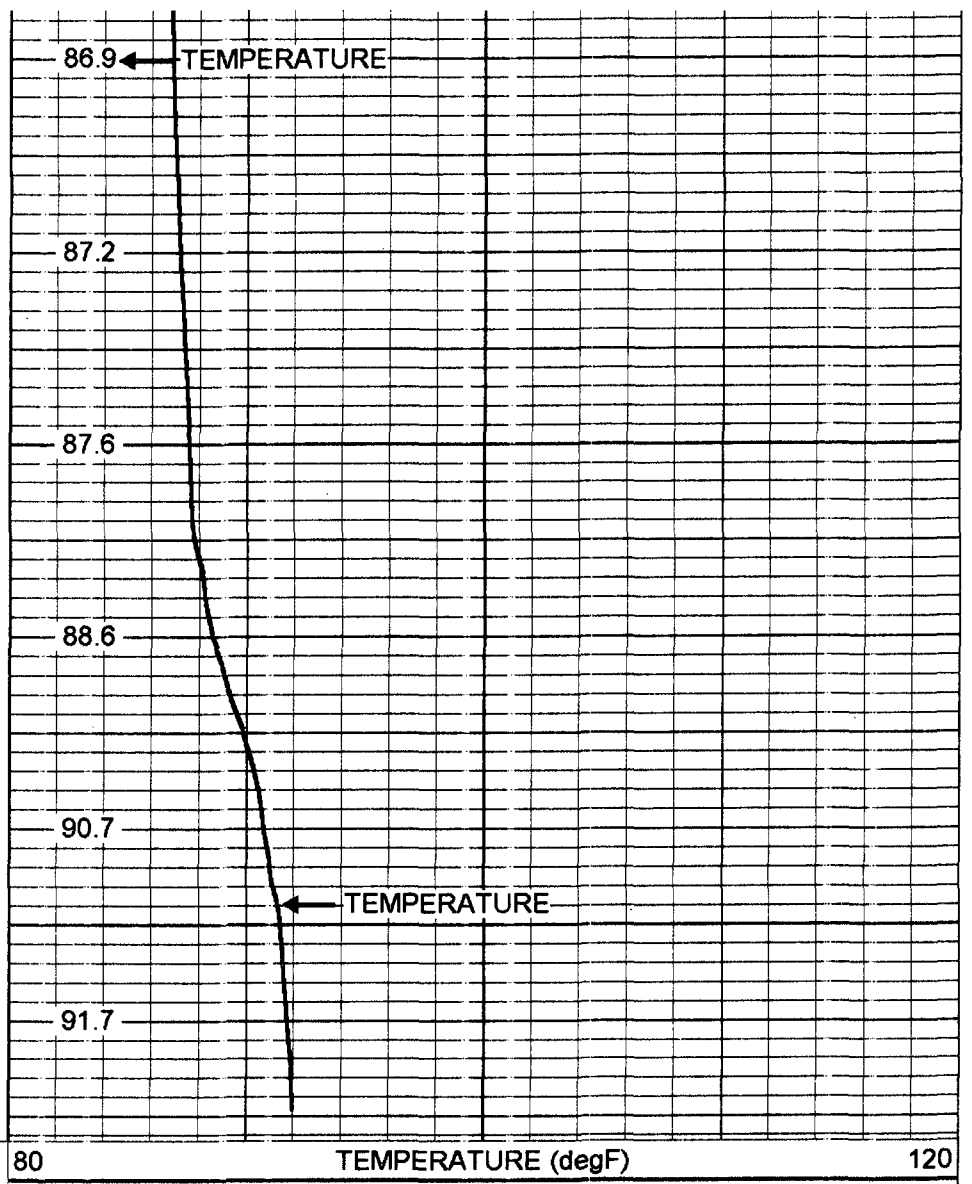
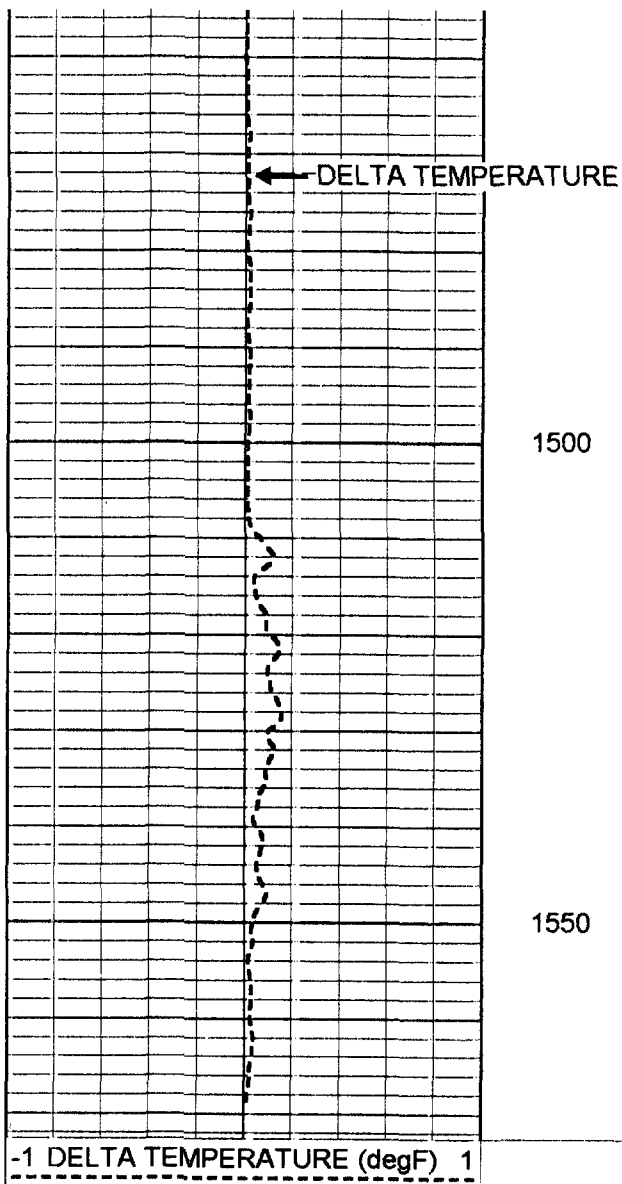
1300

1350

1400

1450





XYC-XYCSM (06SM)  
87.00 lb 3.50 in OD 6.60 ft

Dataset: run3/pass2  
Total Length: 9.35 ft  
Total Weight: 127.00 lb  
O.D. 3.50 in

### Temperature Calibration Report

Serial Number: 17  
Tool Model: MLS  
Performed: Thu Apr 22 12:56:07 2004

Point #	Reading		Reference	
1	320.1	cps	32	degF
2	700.1	cps	70	degF
3	2000.1	cps	200	degF