

**FLUID CONDUCTIVITY
TEMPERATURE
LOG**

Company MWH
Well DEEP INJECTION WELL #1
Field LEE COUNTY - THREE OAKS
County LEE
State FLORIDA

Company MWH
Well DEEP INJECTION WELL #1
Field LEE COUNTY - THREE OAKS
County LEE
State FLORIDA

Location	Elevation	Other Services SEE COMMENTS
Permanent Datum	PAD	Elevation K.B. D.F. G.L.
Log Measured From	PAD	
Drilling Measured From		

Date	FEB. 21, 2005
Run Number	THREE
Depth Driller	1830'
Depth Logger	1810'
Bottom Logged Interval	1810'
Top Log Interval	CASING
Open Hole Size	12.25"
Type Fluid	WATER
Density / Viscosity	NA
Max. Recorded Temp.	104 F
Estimated Cement Top	NA
Time Well Ready	1900
Time Logger on Bottom	2000
Equipment Number	103
Location	FT. MYERS CATHY R. WALTHER
Recorded By	
Witnessed By	

Borehole Record				Tubing Record			
Run Number	Bit	From	To	Size	Weight	From	To
ONE	12.25"	SURFACE	510'				
TWO	48.5"	SURFACE	495'				
THREE	12.25"	SURFACE	1830'				

Casing Record	Size	Wd/Ft	Top	Bottom
Surface String	40"	375' W.T.	SURFACE	490'
Prod. String				
Production String				
Liner				

<<< Fold Here >>>

All interpretations are opinions based on inferences from electrical or other measurements and we cannot and do not guarantee the accuracy or correctness of any interpretation, and we shall not, except in the case of gross or willful negligence on our part, be liable or responsible for any loss, costs, damages, or expenses incurred or sustained by anyone resulting from any interpretation made by any of our officers, agents or employees. These interpretations are also subject to our general terms and conditions set out in our current Price Schedule.

Comments

OTHER SERVICES:

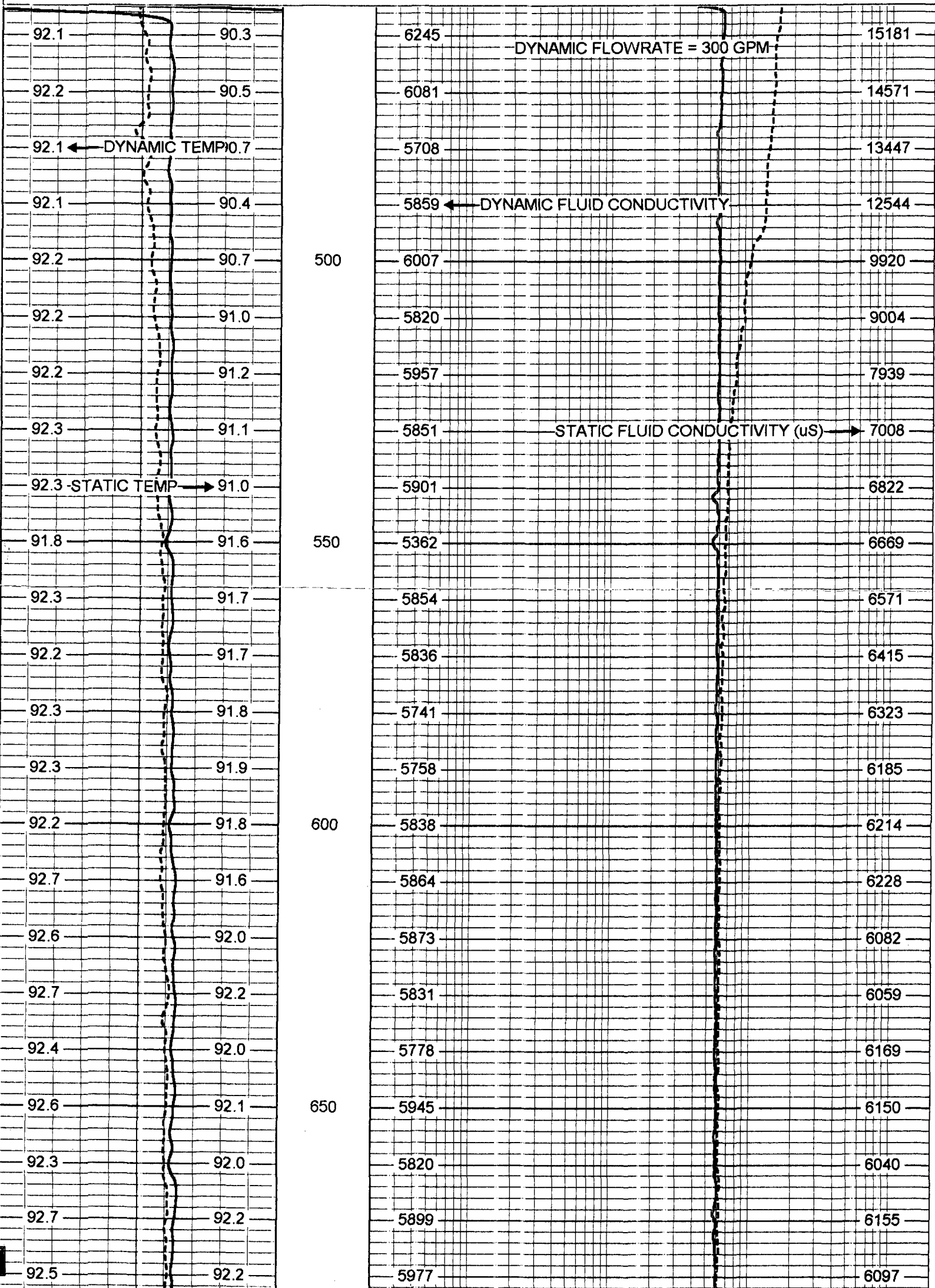
FLOWMETER
X-Y CALIPER / GAMMA RAY
DUAL INDUCTION
BOREHOLE TELEVIEWER
SONIC

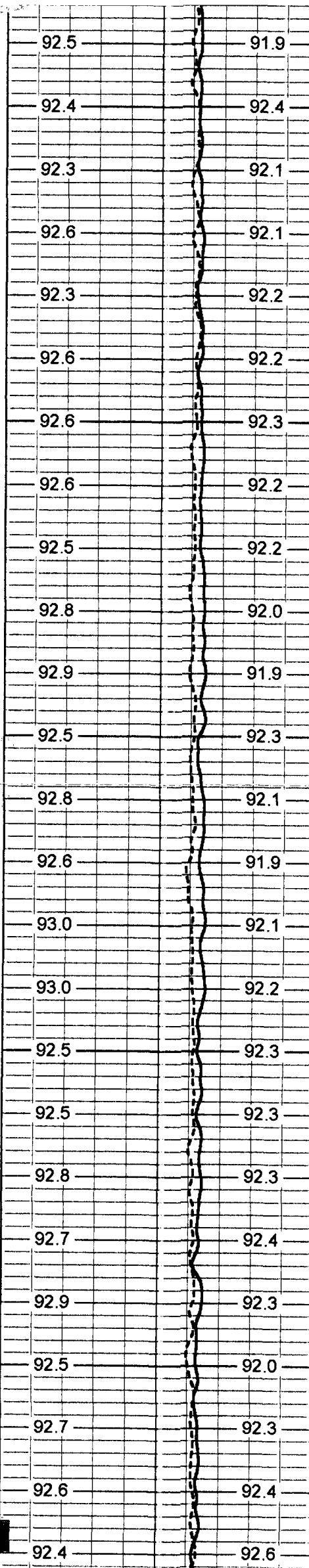
DYNAMIC FLOWRATE = 300 GPM

Charted by: Depth in Feet scaled 1:240

80	DYNAMIC TEMP (degF)	100
80	STATIC TEMP (degF)	100

20	DYNAMIC FLUID CONDUCTIVITY (uS)	200000
20	STATIC FLUID CONDUCTIVITY (uS)	200000





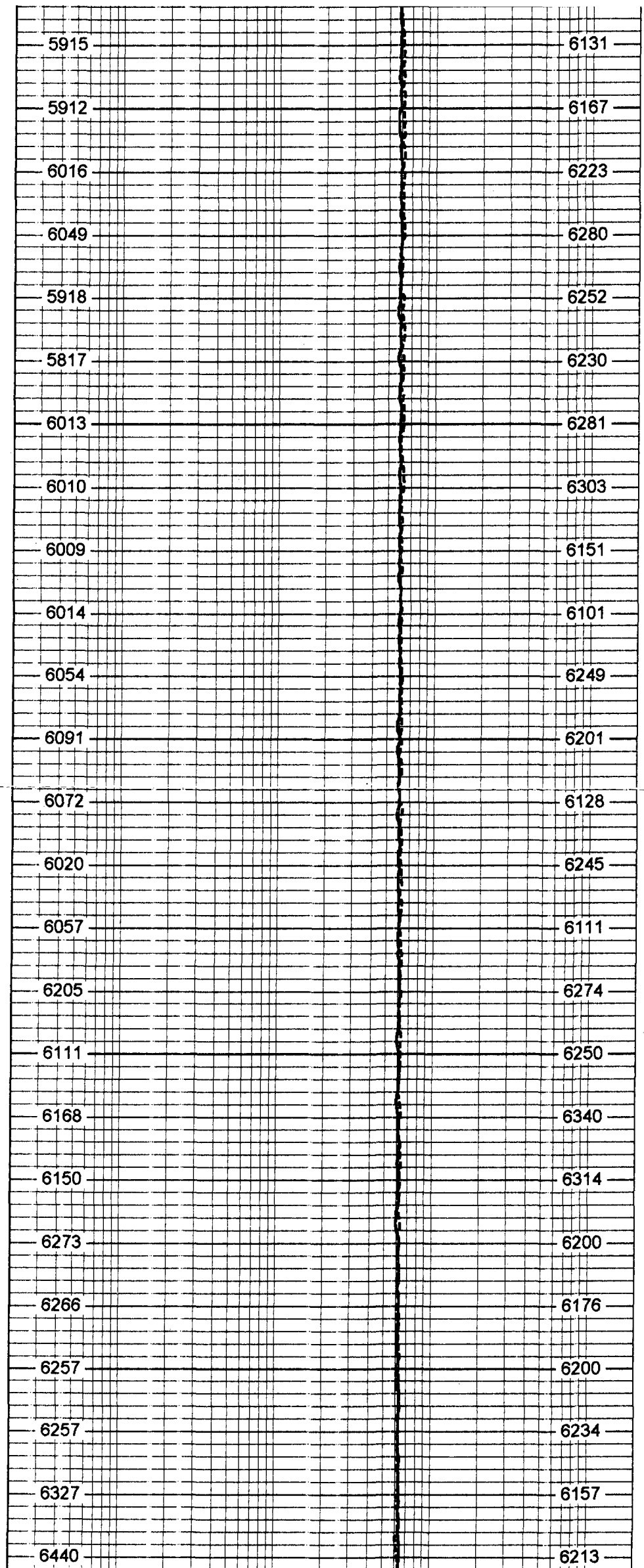
700

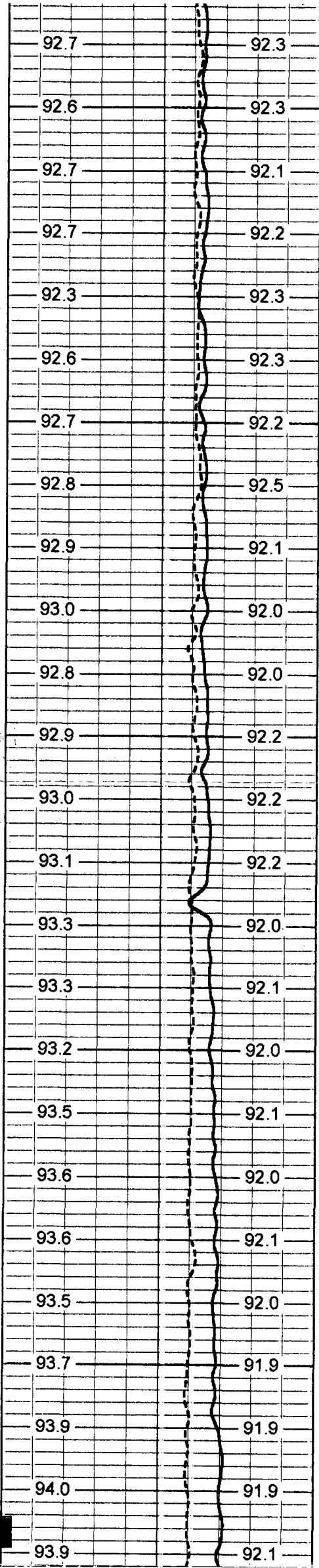
750

800

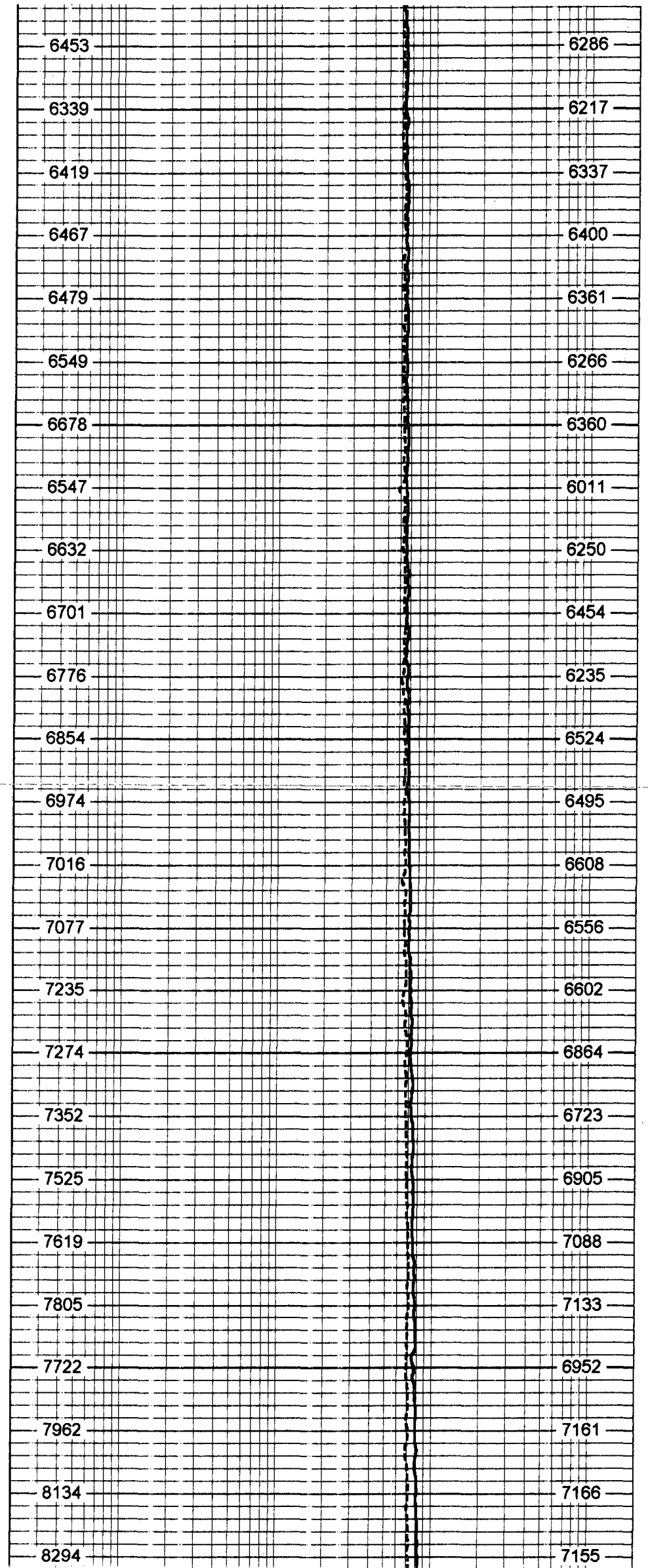
850

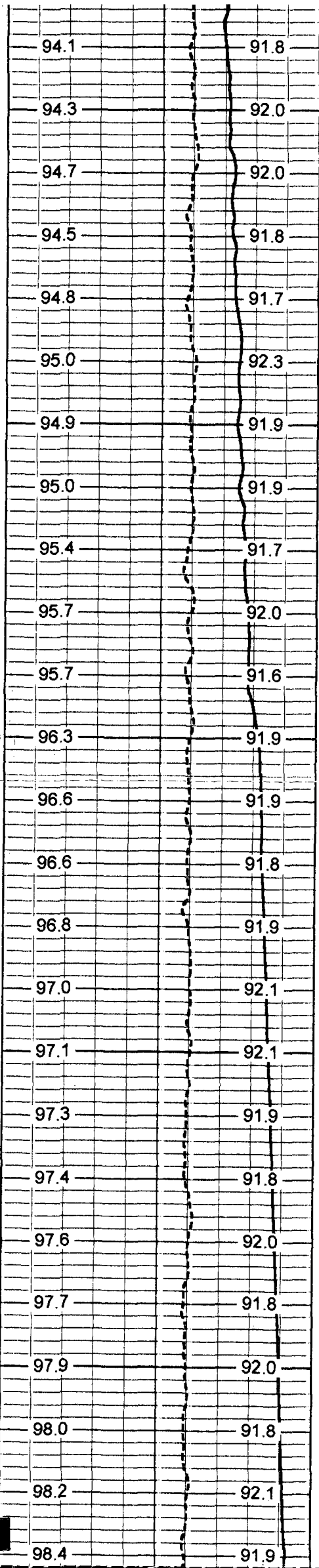
900



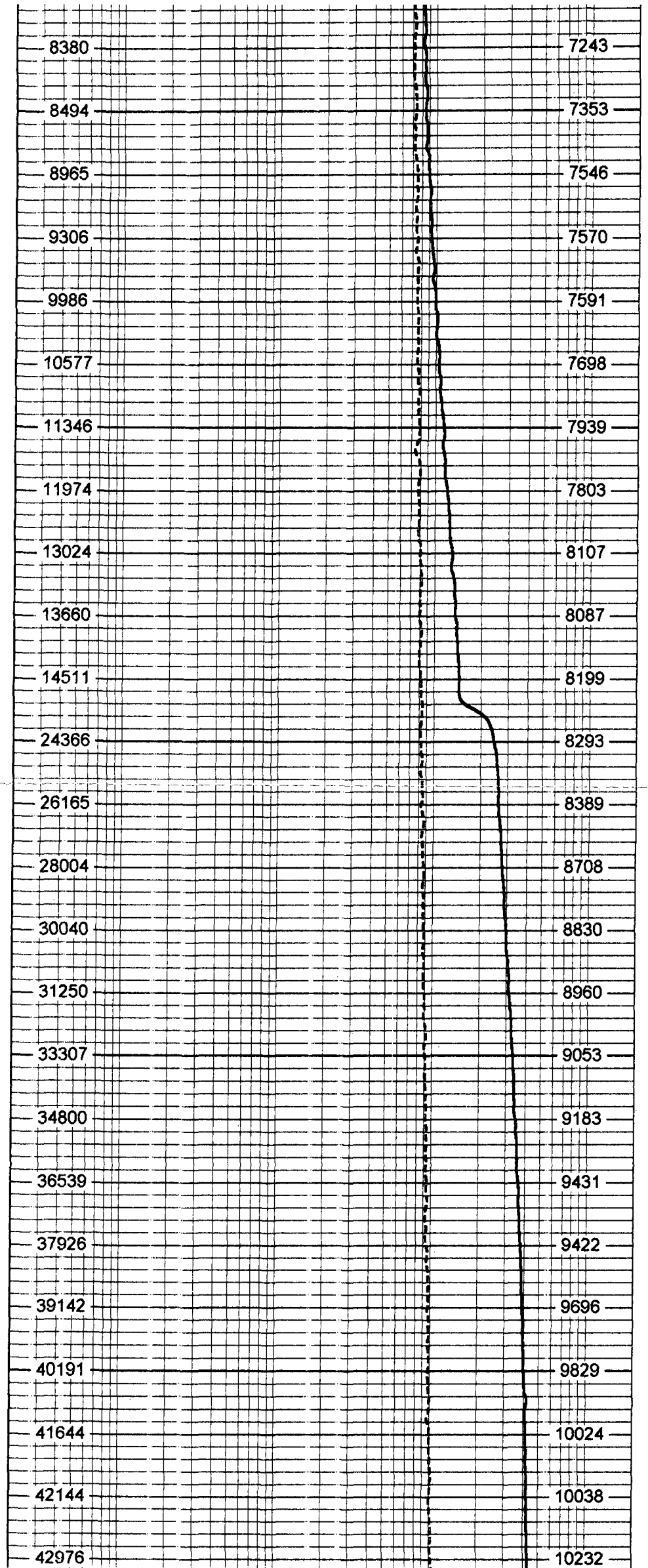


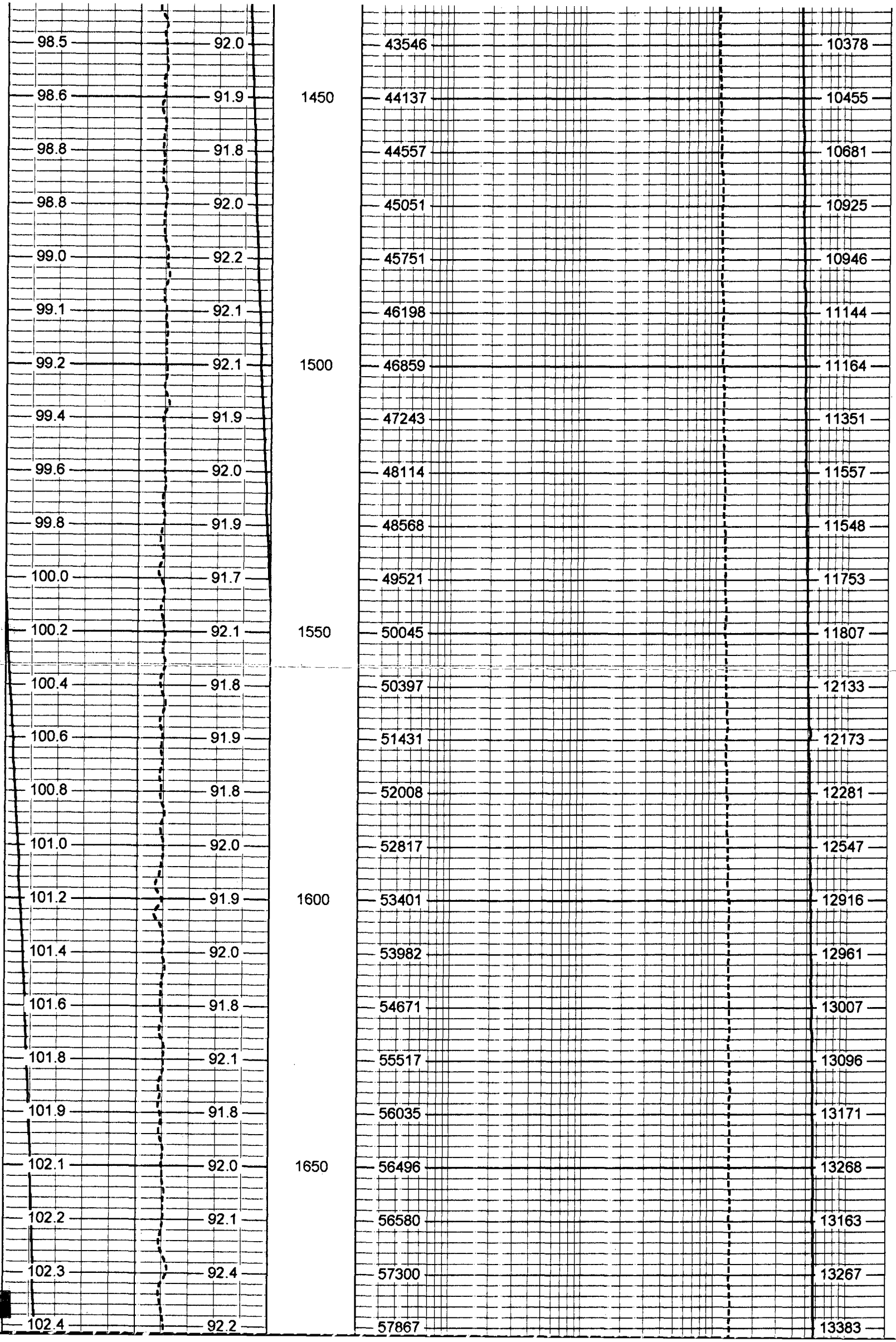
950
1000
1050
1100
1150





1200
1250
1300
1350
1400





98.5

92.0

43546

10378

98.6

91.9

1450

44137

10455

98.8

91.8

44557

10681

98.8

92.0

45051

10925

99.0

92.2

45751

10946

99.1

92.1

46198

11144

99.2

92.1

1500

46859

11164

99.4

91.9

47243

11351

99.6

92.0

48114

11557

99.8

91.9

48568

11548

100.0

91.7

49521

11753

100.2

92.1

1550

50045

11807

100.4

91.8

50397

12133

100.6

91.9

51431

12173

100.8

91.8

52008

12281

101.0

92.0

52817

12547

101.2

91.9

1600

53401

12916

101.4

92.0

53982

12961

101.6

91.8

54671

13007

101.8

92.1

55517

13096

101.9

91.8

56035

13171

102.1

92.0

1650

56496

13268

102.2

92.1

56580

13163

102.3

92.4

57300

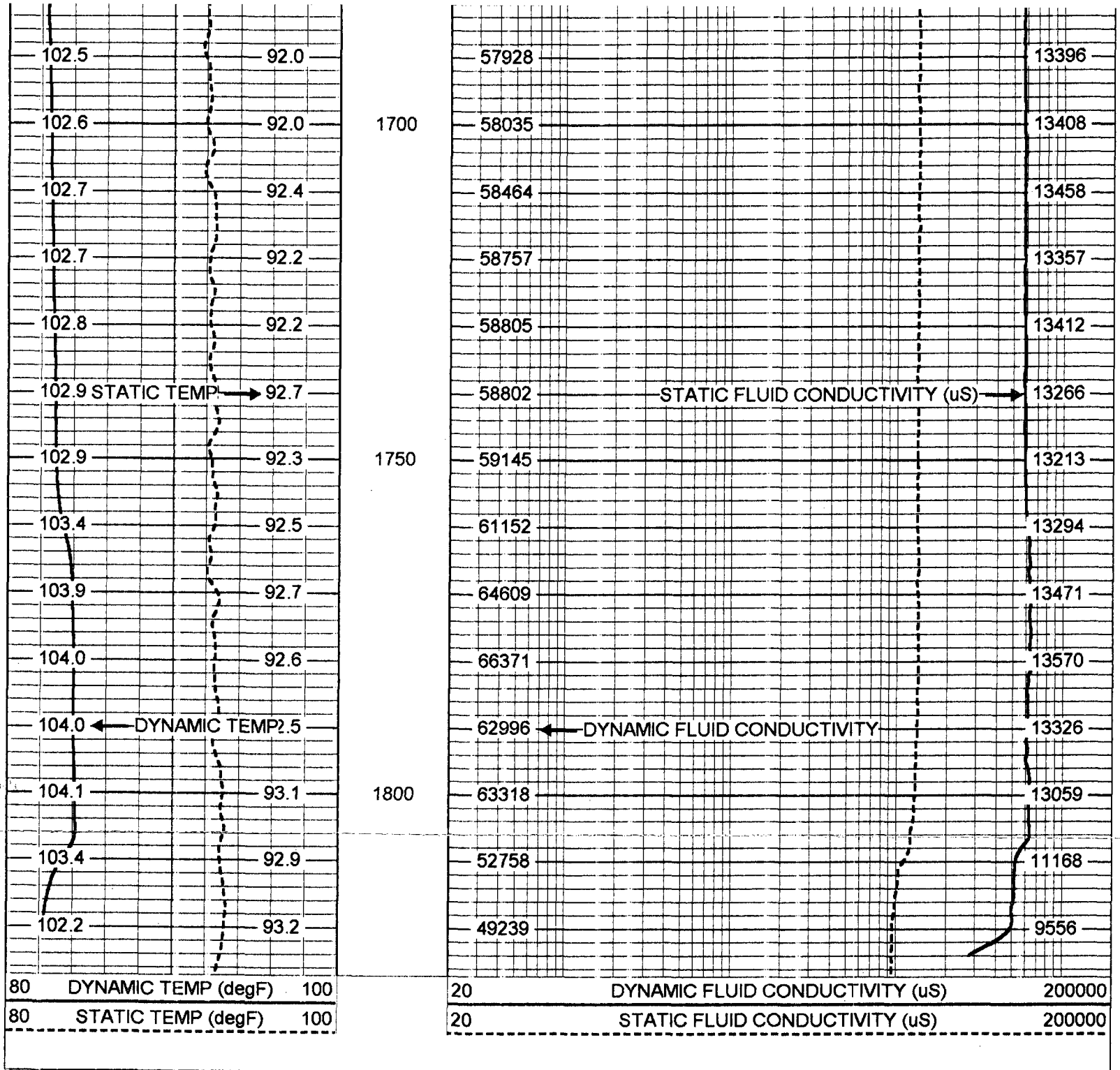
13267

102.4

92.2

57867

13383



FRT Calibration Report

Serial Number: 31
 Tool Model: SONDEX
 Performed: Thu Apr 22 09:03:45 2004

Point #	Reading	Reference
1	30.817 cps	1000.000
2	171.328 cps	10000.000
3	445.517 cps	25000.000
4	965.867 cps	50000.000
5	cps	
6	cps	

Temperature Calibration Report

Serial Number: 31
 Tool Model: SONDEX
 Performed: Thu Apr 22 09:31:10 2004

Point #	Reading	Reference
1	128.595 cps	41 degF
2	265.557 cps	70 degF

