



YOUNGQUIST BROTHERS, Inc

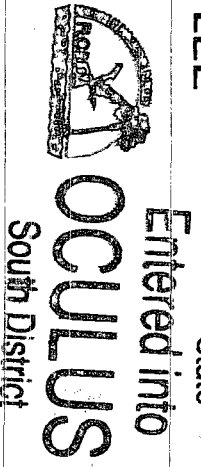
GEOPHYSICAL LOGGING DIVISION

D.B.P. - South District

HIGH RESOLUTION TEMPERATURE LOG

Company MWH
Well DEEP INJECTION WELL #1
Field LEE COUNTY - THREE OAKS
County LEE
State FLORIDA

Company MWH
Well DEEP INJECTION WELL #1
Field LEE COUNTY - THREE OAKS
County LEE
State FLORIDA



Entered into South District

Permanent Datum PAD
Log Measured From PAD
Drilling Measured From PAD
Elevation
Other Services RTS

Date 1-AUG-2005
Run Number RTS
Depth Driller 2860'
Depth Logger 2853'
Bottom Logged Interval SURFACE
Top Log Interval SURFACE
Open Hole Size 18.5"
Type Fluid WATER
Density / Viscosity NA
Max. Recorded Temp. 110 F
Estimated Cement Top NA
Time Well Ready 0700
Time Logger on Bottom 0800
Equipment Number 103
Location FT. MYERS
Recorded By CATHEY
Witnessed By FRATARCANGELI

Run Number	Borehole Record		Tubing Record		To
	Bit	From	Weight	From	
ONE	12.25"	SURFACE	510'	FIVE	3015'
TWO	48.5"	SURFACE	495'	SIX	2100'
THREE	12.25"	SURFACE	1830'	SEVEN	2860'
FOUR	38.5"	CASING	1535'		

Record	Size	Wgt/Ft	Top	Bottom
Casing Record	40"	37.5" W.T.	SURFACE	490'
Surface String	30"	3.75 W.T.	SURFACE	1530'
Prot. String	20"	5" WT	SURFACE	2100'
Production String	14.5" ID	FRP	SURFACE	2095'

<<< Fold Here >>>

All interpretations are opinions based on inferences from electrical or other measurements and we cannot and do not guarantee the accuracy or correctness of any interpretation, and we shall not, except in the case of gross or willful negligence on our part, be liable or responsible for any loss, costs, damages, or expenses incurred or sustained by anyone resulting from any interpretation made by any of our officers, agents or employees. These interpretations are also subject to our general terms and conditions set out in our current Price Schedule.

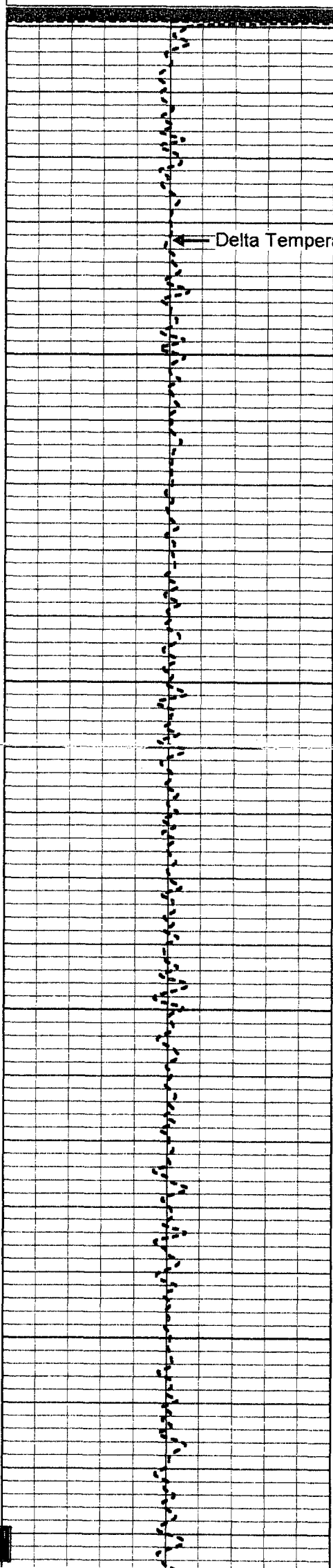
Comments



YOUNGQUIST BROTHERS, Inc
GEOPHYSICAL LOGGING DIVISION

TEMPERATURE

Database File: 3oaksrts.db
Dataset Pathname: TEMP
Presentation Format: temp
Dataset Creation: Mon Aug 01 07:21:07 2005 by Log 6.2_B4
Charted by: Depth in Feet scaled 1:240



Delta Temperature

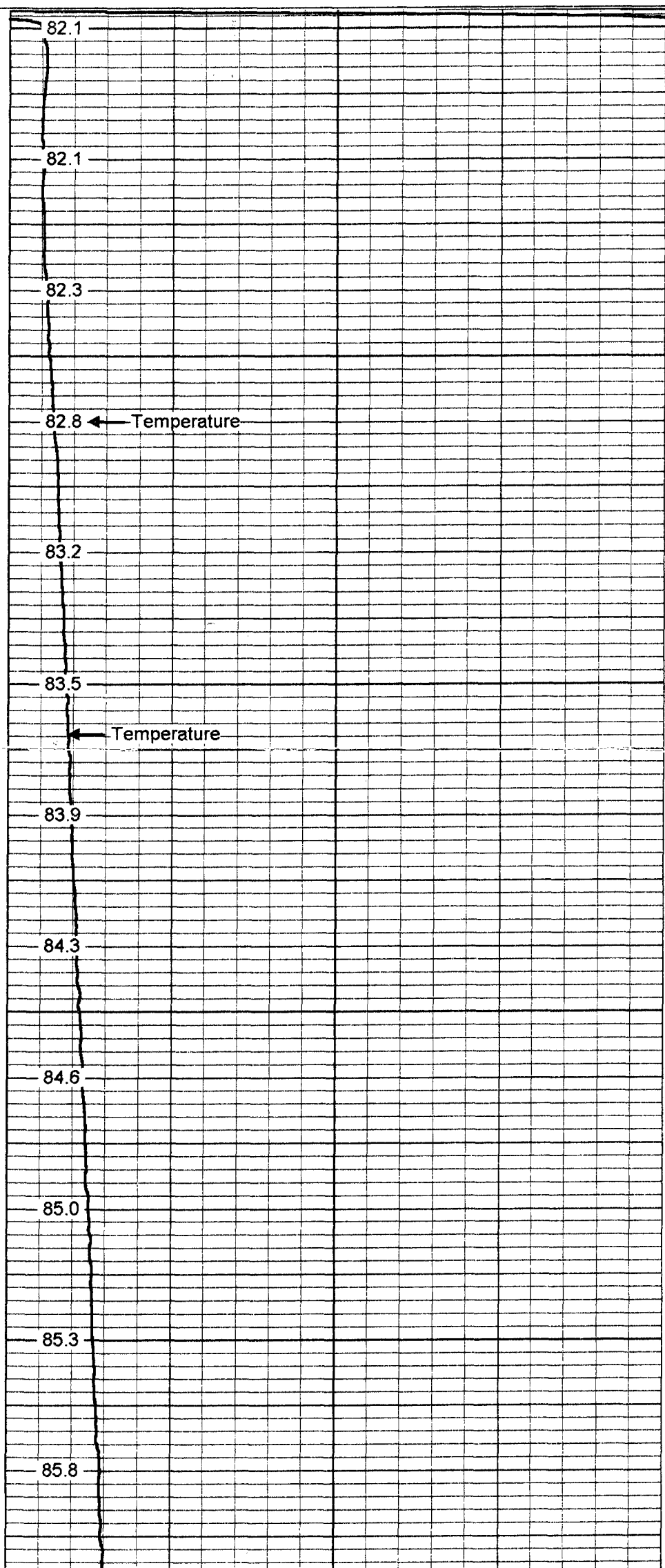
0

50

100

150

200



82.1

82.1

82.3

82.8

83.2

83.5

83.9

84.3

84.6

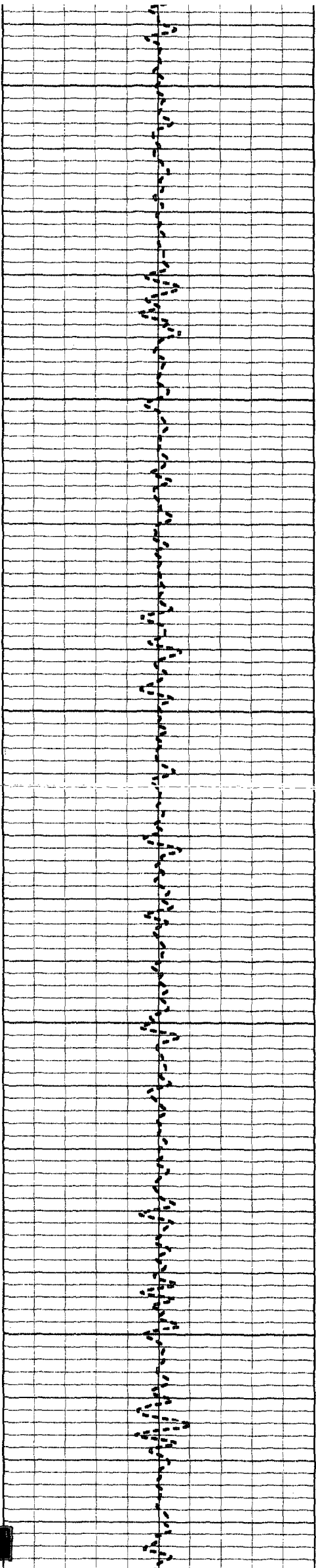
85.0

85.3

85.8

Temperature

Temperature



250

300

350

400

450

86.0

86.3

86.8

87.2

87.6

87.8

88.2

88.5

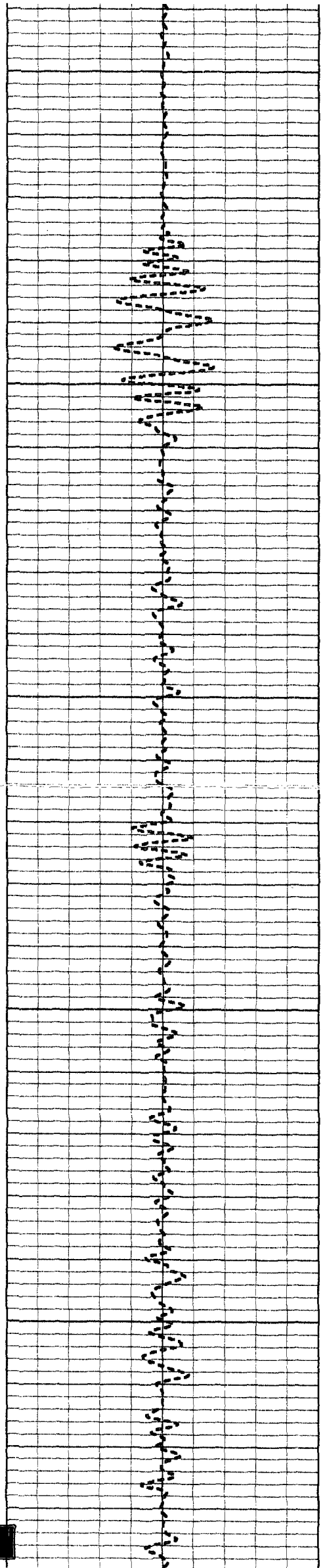
88.8

89.1

89.5

89.7

90.0



500

550

600

650

700

90.2

90.4

90.7

90.9

91.1

91.3

91.5

91.6

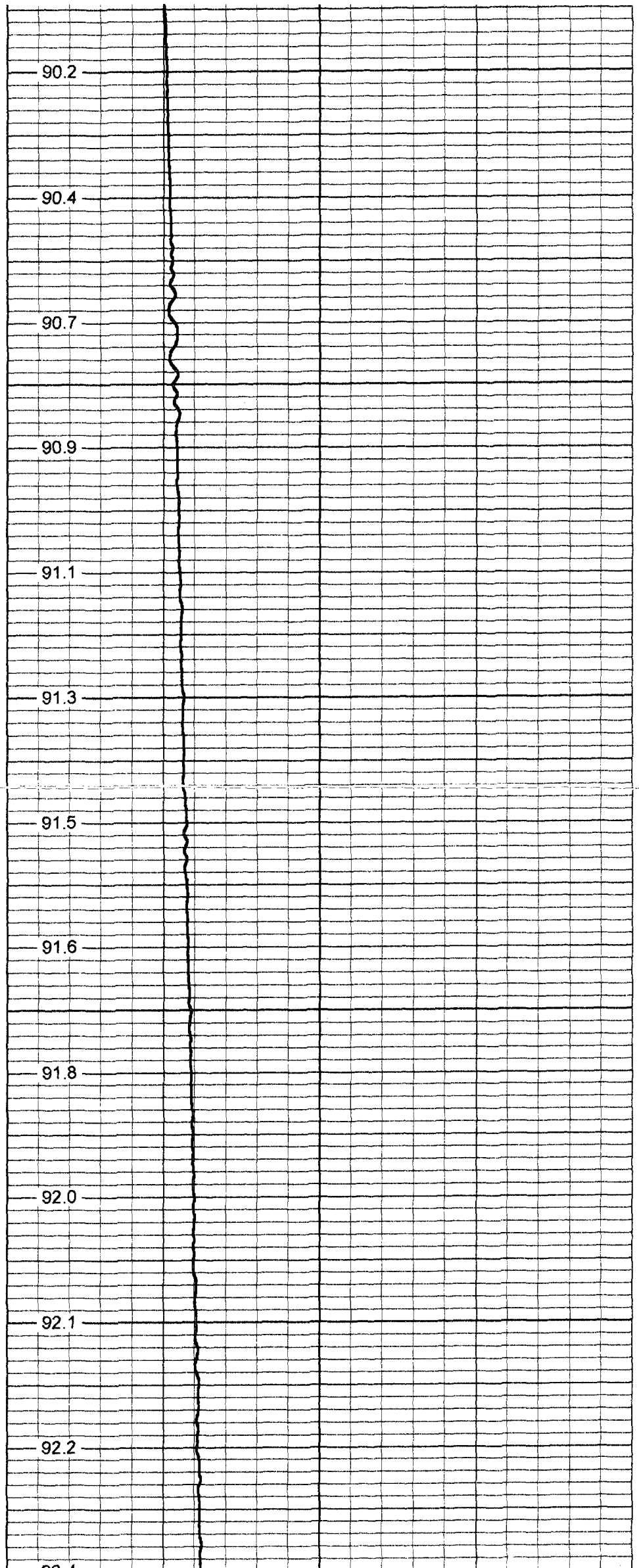
91.8

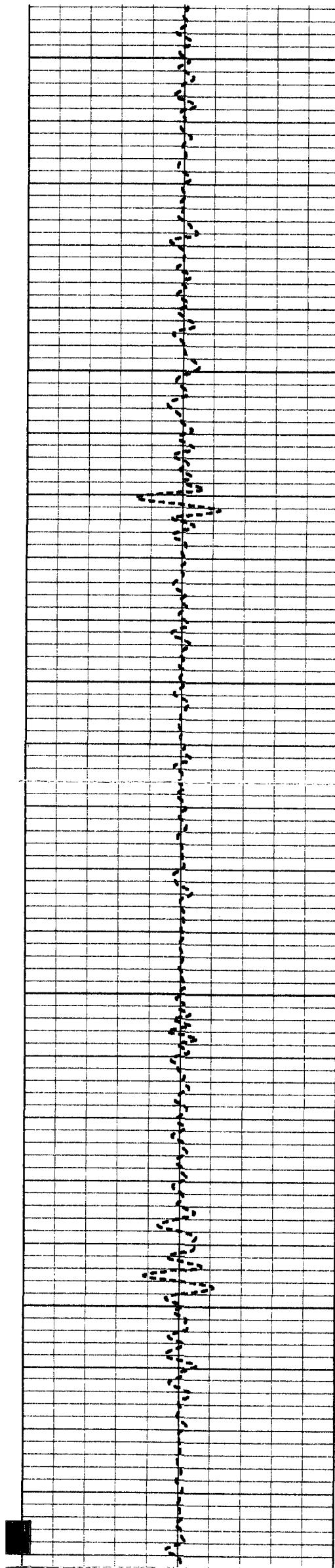
92.0

92.1

92.2

92.3





750

92.5

92.5

800

92.8

92.9

92.8

850

92.9

93.1

900

93.3

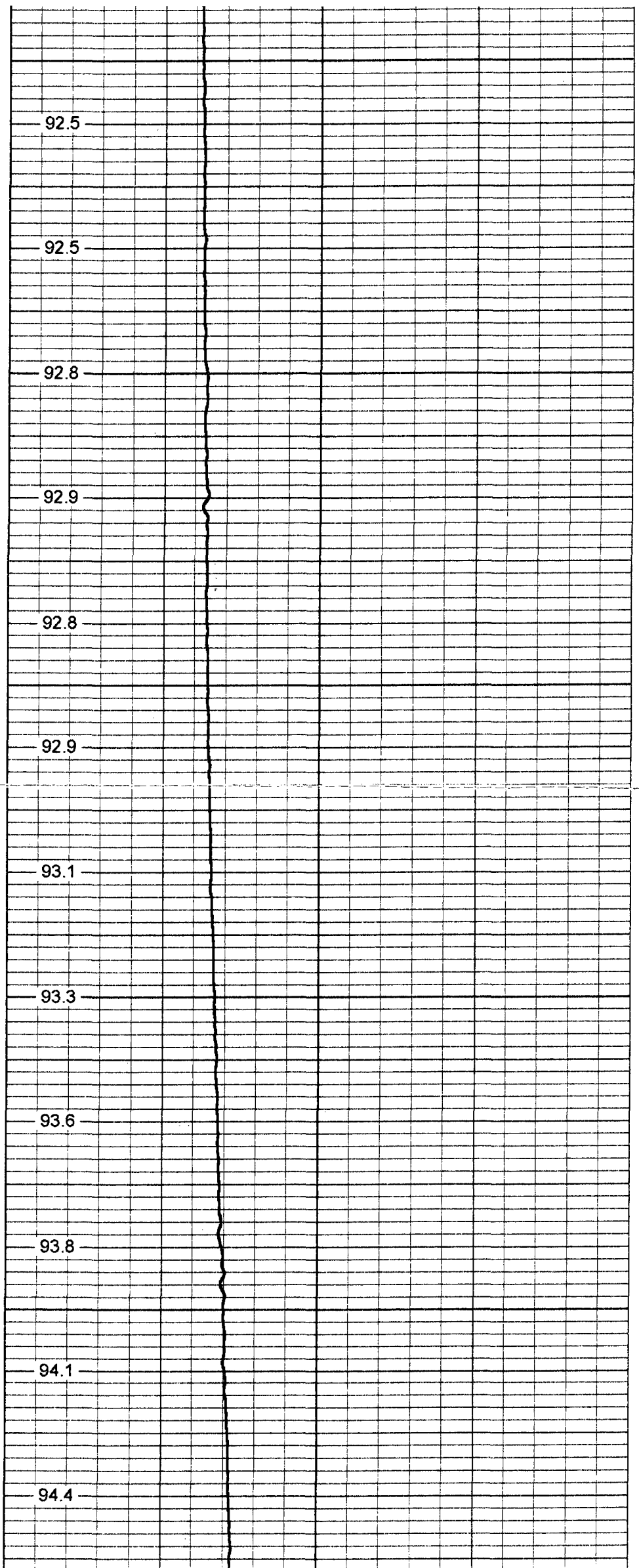
93.6

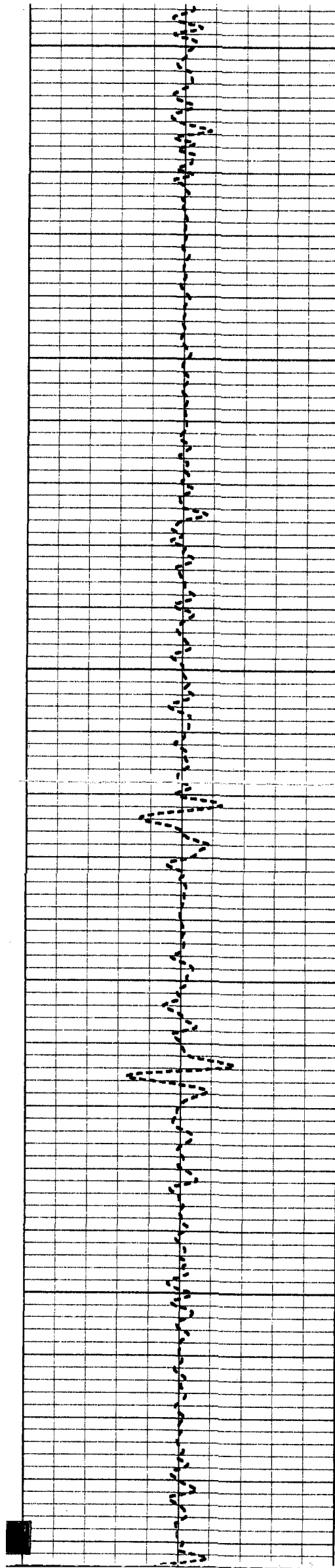
93.8

950

94.1

94.4





1000

1050

1100

1150

1200

94.7

94.8

94.9

95.2

95.3

95.5

95.8

96.1

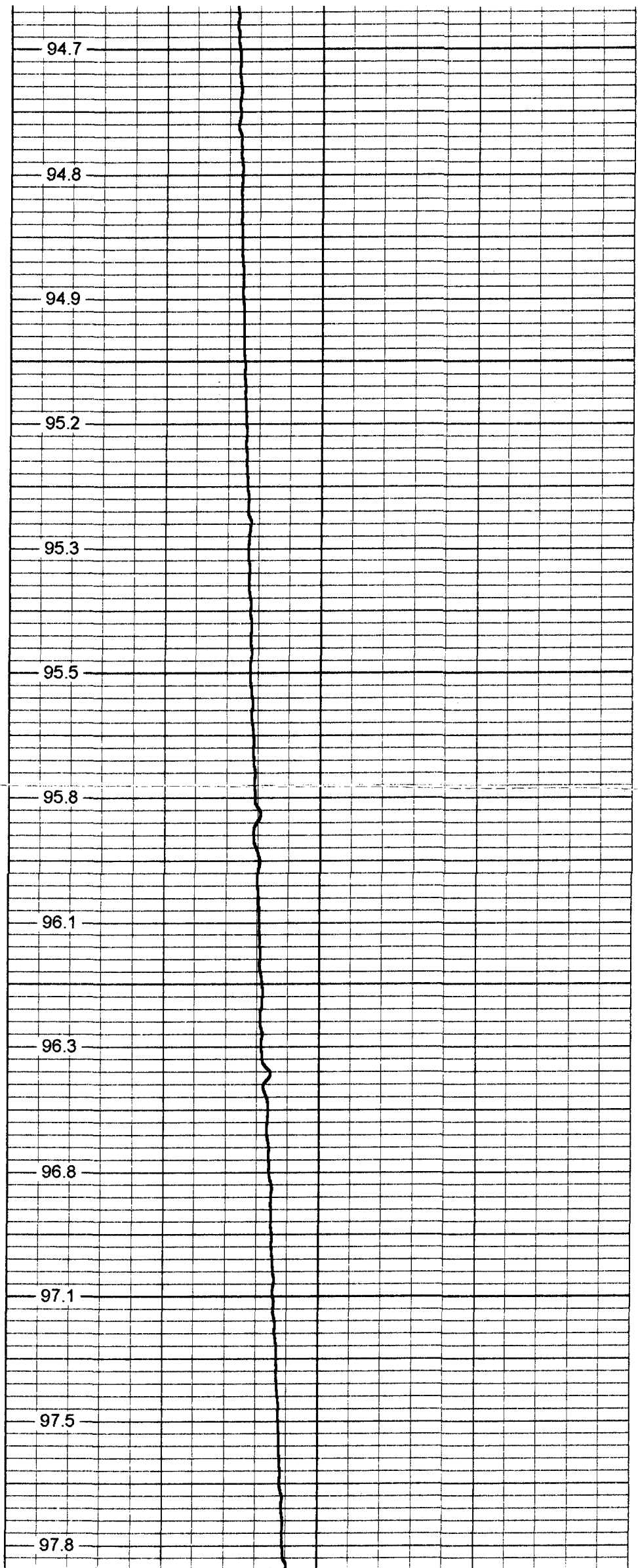
96.3

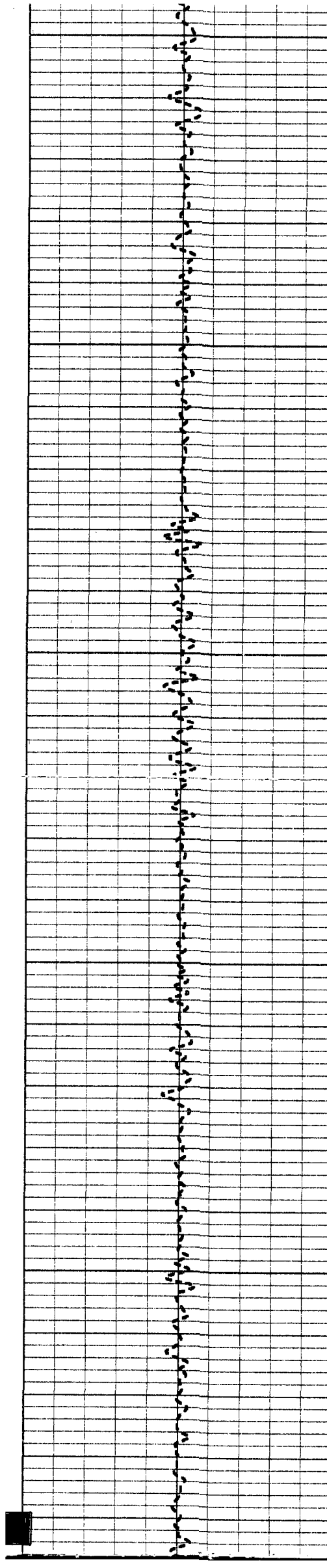
96.8

97.1

97.5

97.8





1250

98.1

98.4

1300

98.8

99.0

99.3

1350

99.5

99.8

1400

100.1

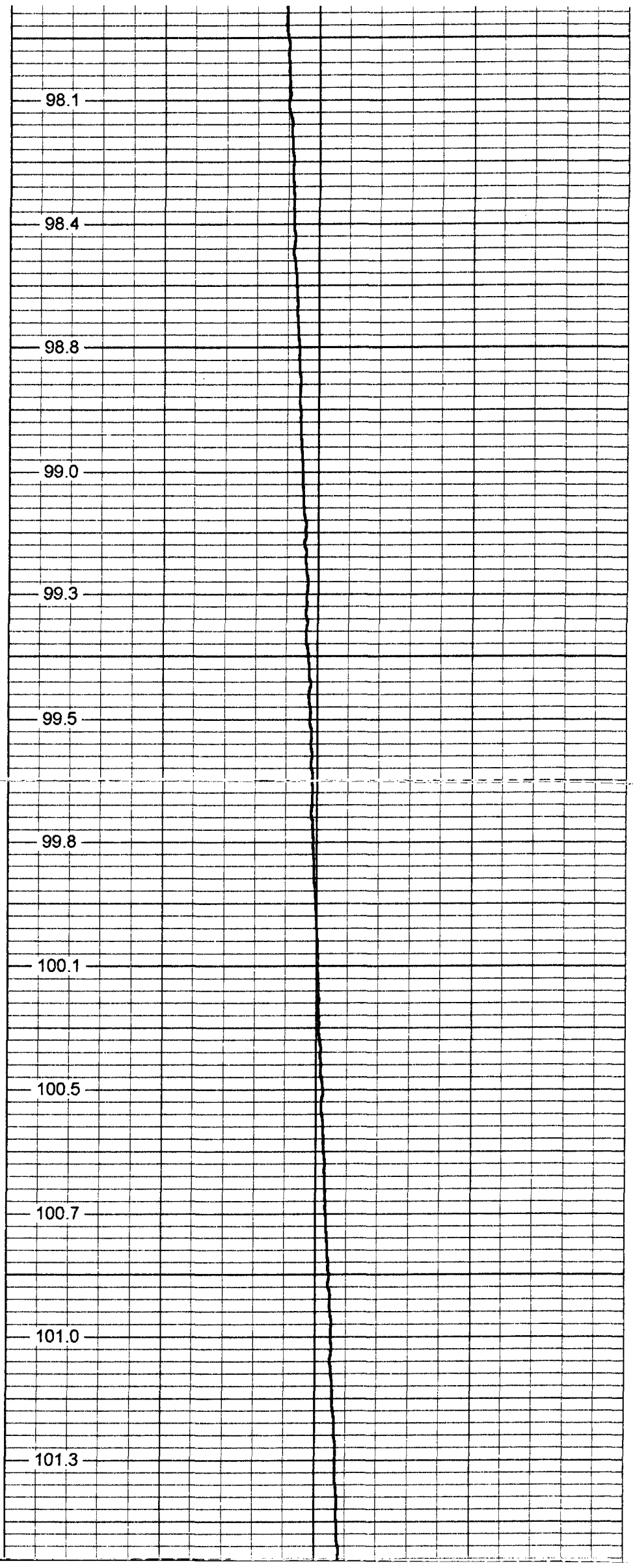
100.5

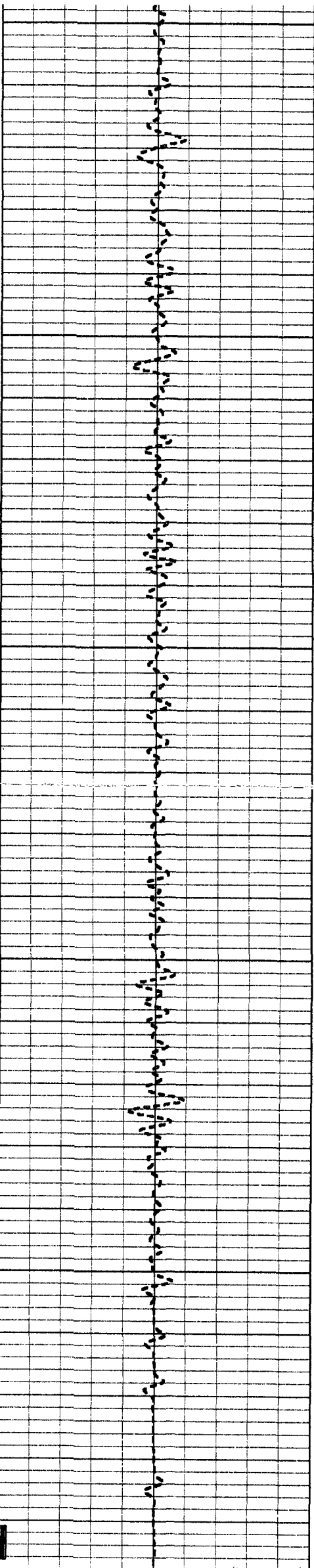
100.7

1450

101.0

101.3





1500

1550

1600

1650

1700

101.6

101.9

101.9

102.1

102.2

102.5

102.8

103.0

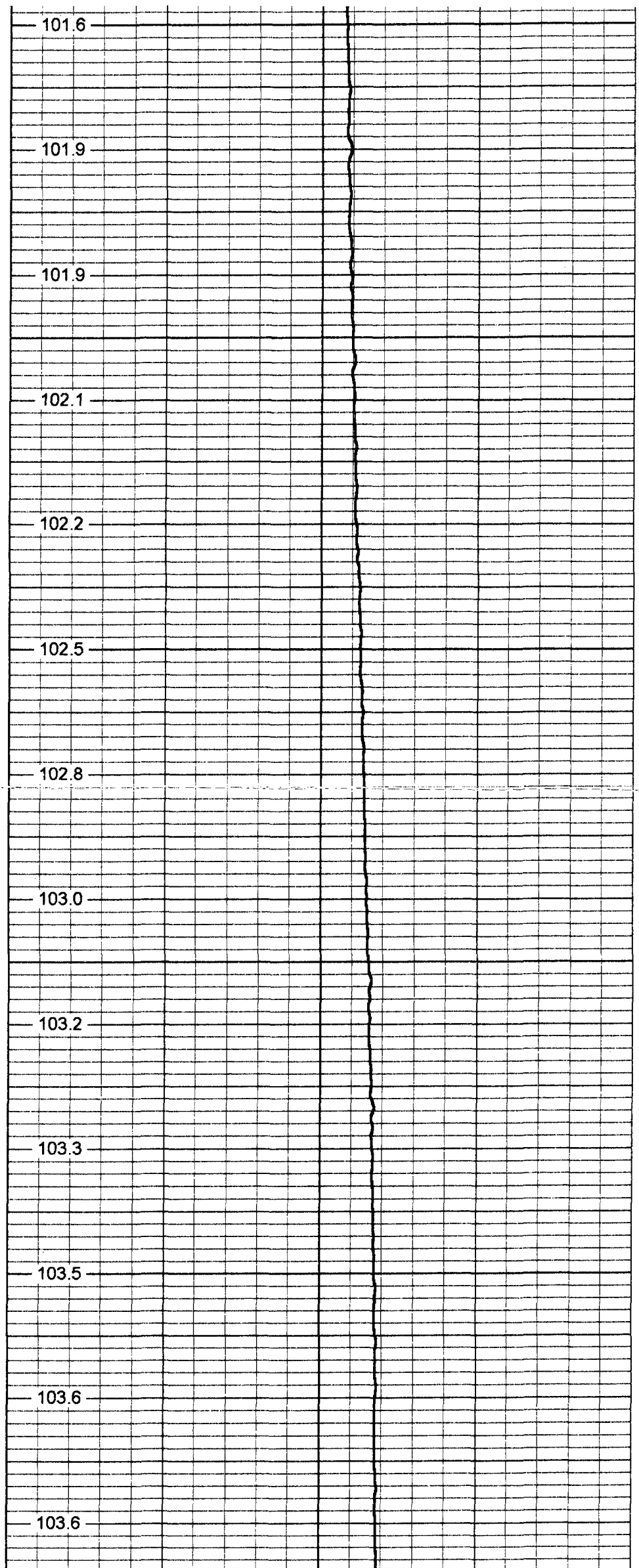
103.2

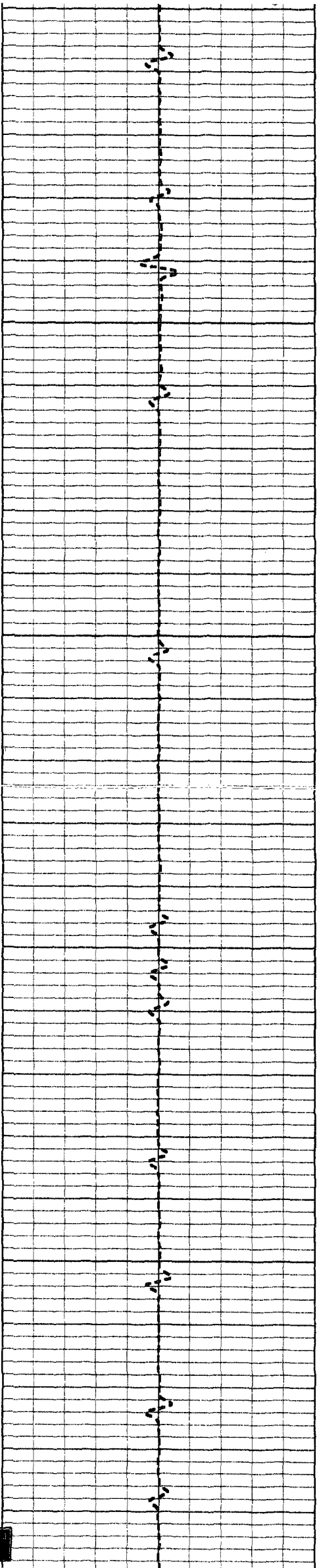
103.3

103.5

103.6

103.6





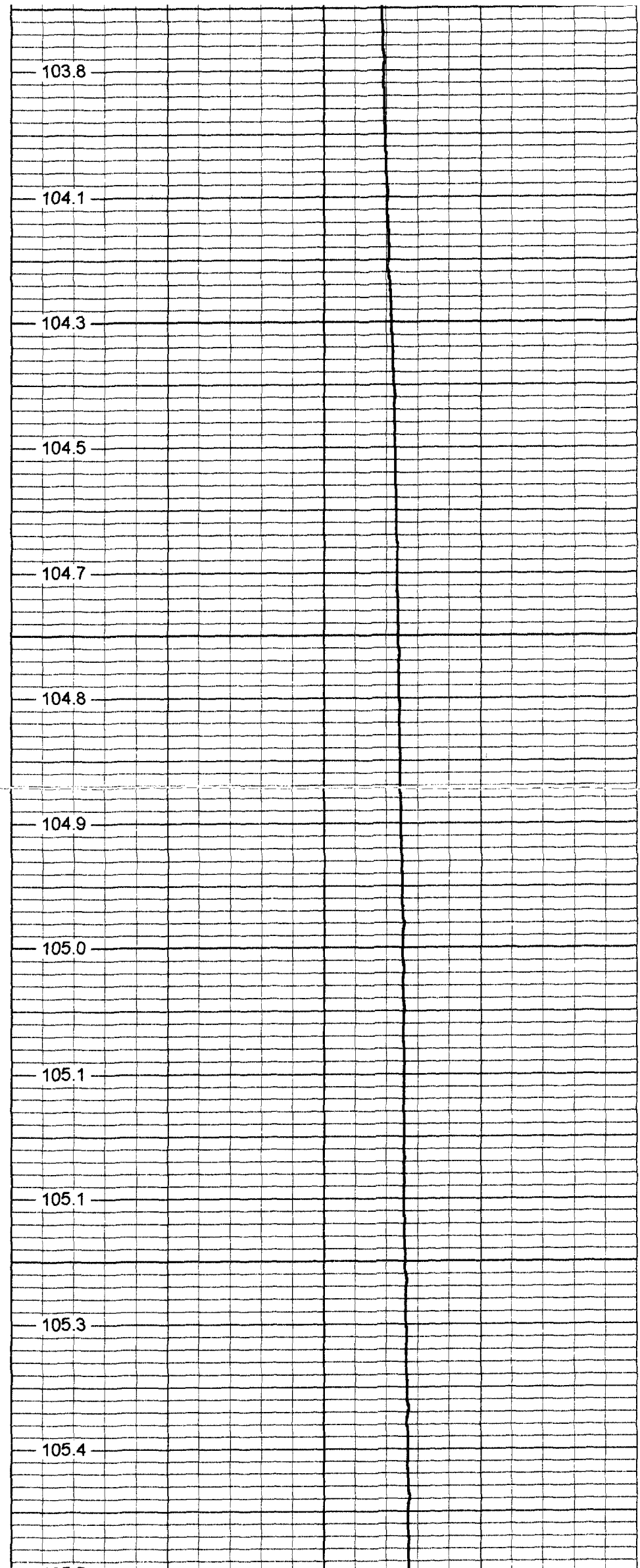
1750

1800

1850

1900

1950



103.8

104.1

104.3

104.5

104.7

104.8

104.9

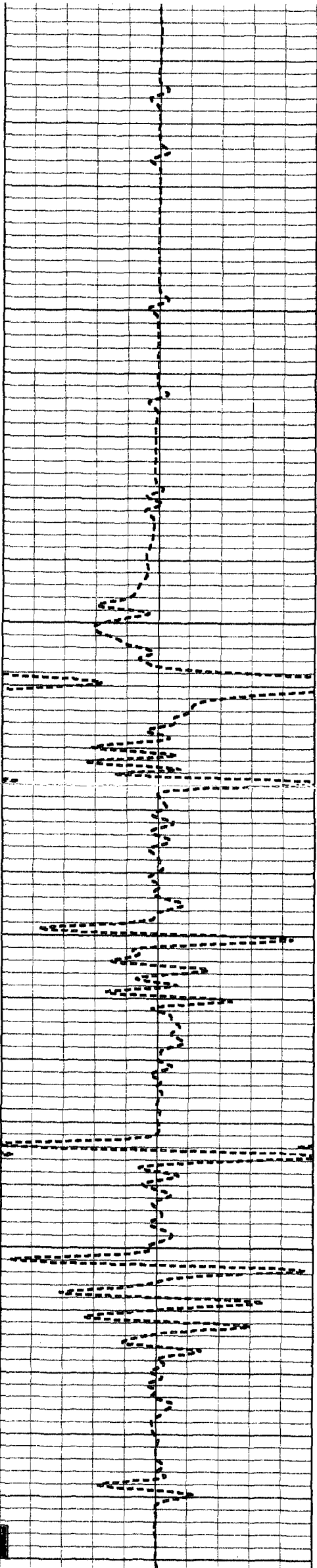
105.0

105.1

105.1

105.3

105.4



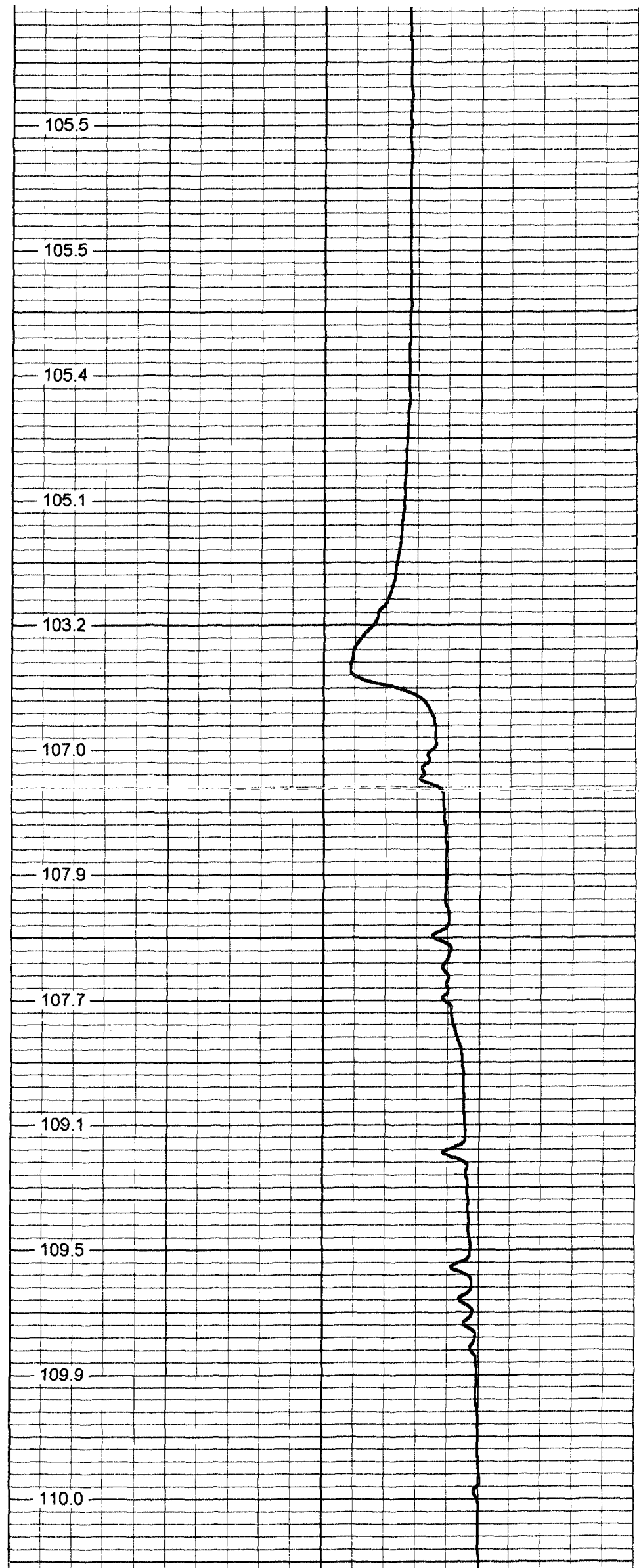
2050

2100

2150

2200

2250



105.5

105.5

105.4

105.1

103.2

107.0

107.9

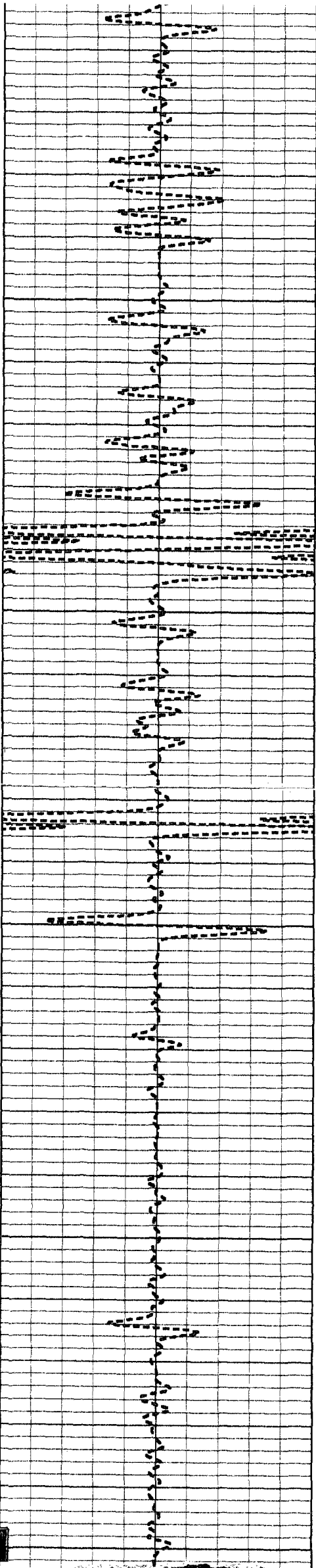
107.7

109.1

109.5

109.9

110.0



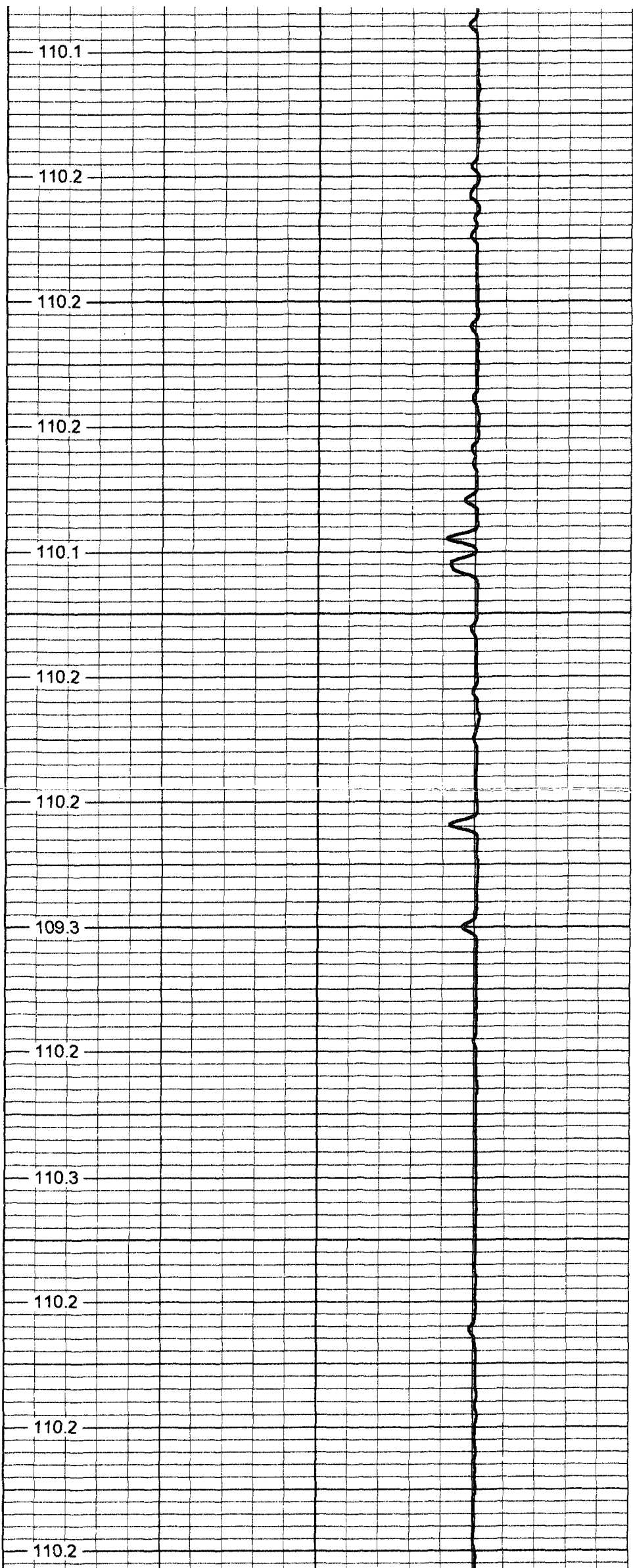
2300

2350

2400

2450

2500



110.1

110.2

110.2

110.2

110.1

110.2

110.2

109.3

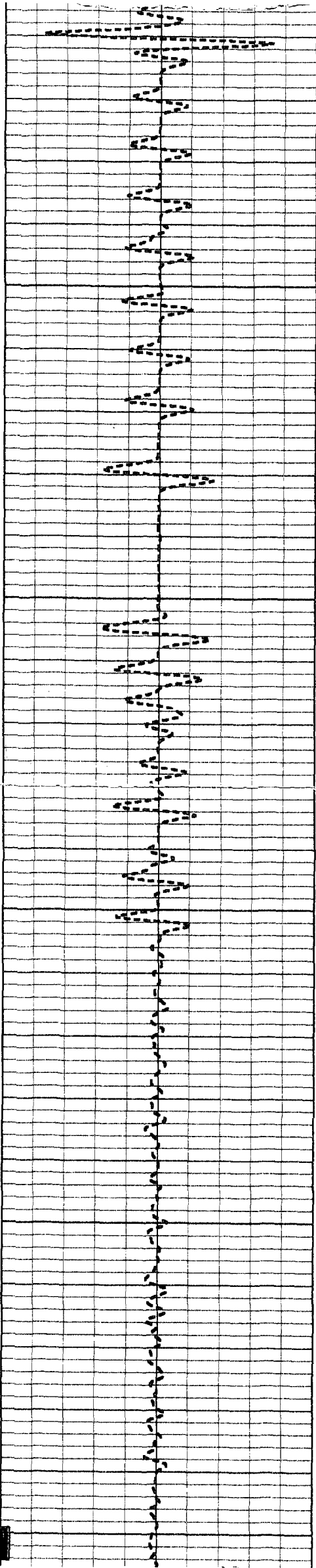
110.2

110.3

110.2

110.2

110.2



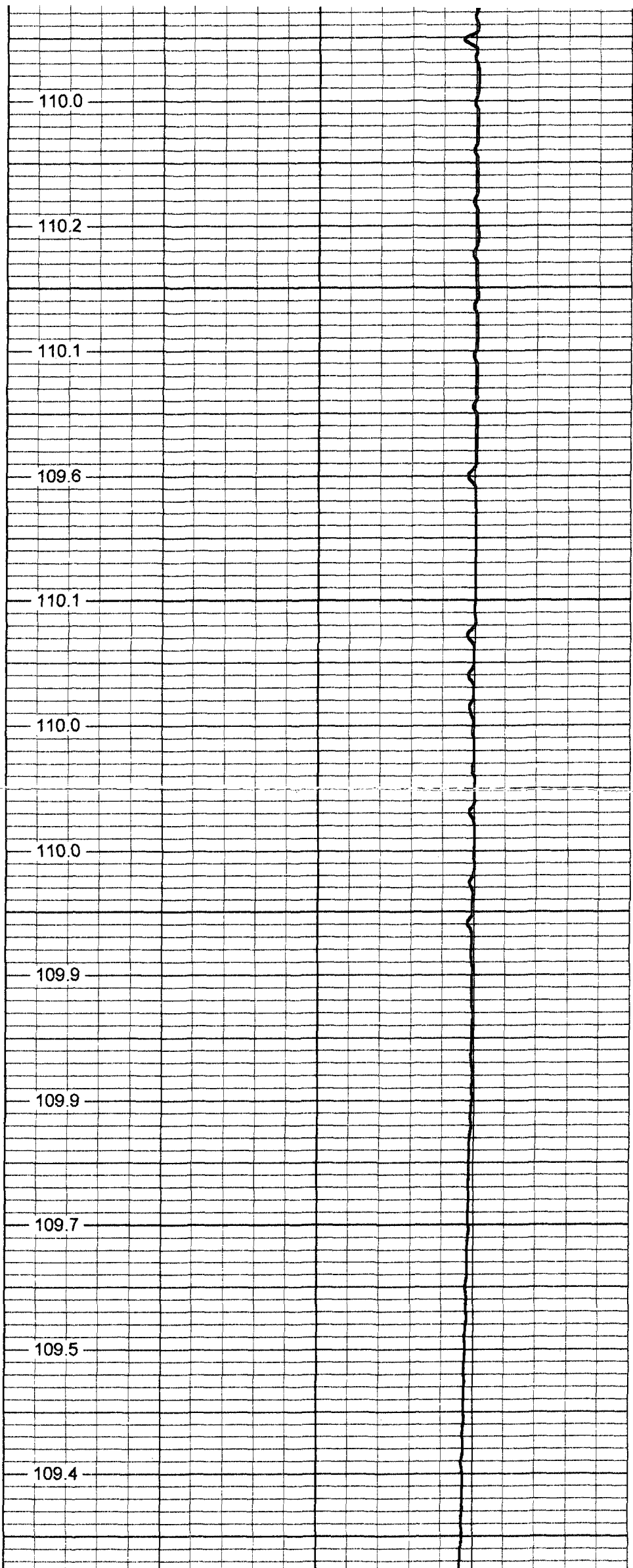
2550

2600

2650

2700

2750



110.0

110.2

110.1

109.6

110.1

110.0

110.0

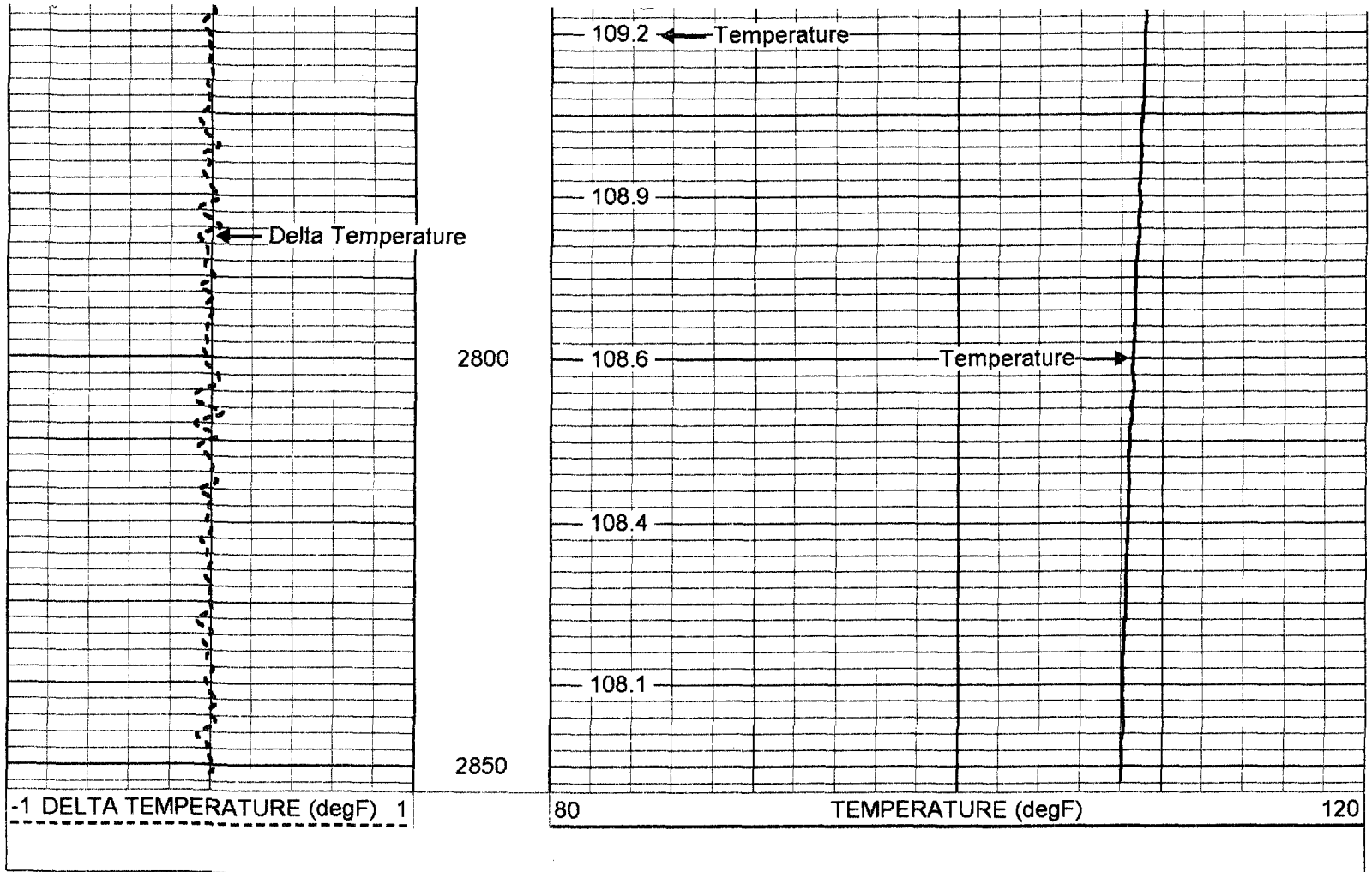
109.9

109.9

109.7

109.5

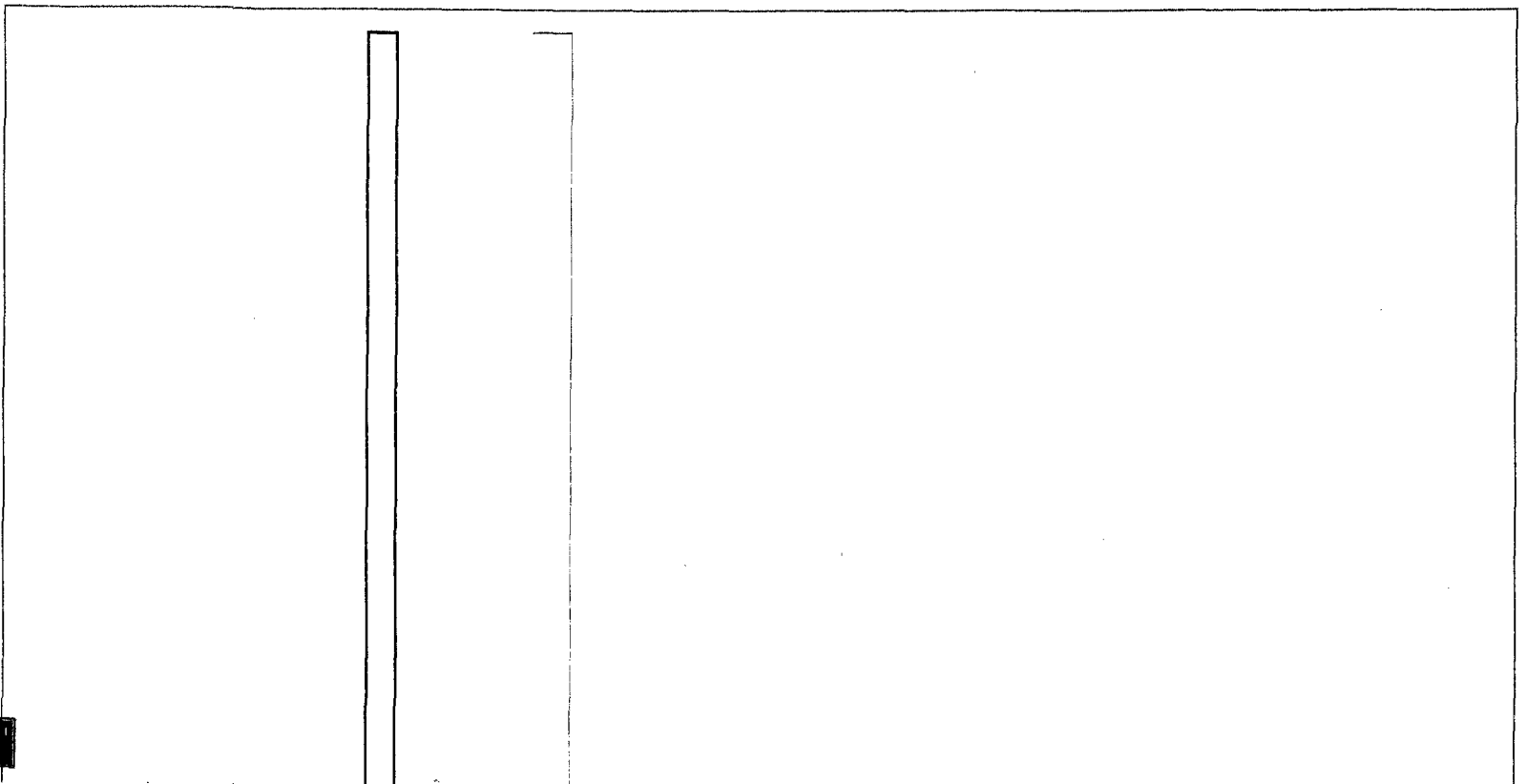
109.4



Temperature Calibration Report

Serial Number: 954
 Tool Model: RTS
 Performed: Wed Feb 28 14:27:36 2001

Point #	Reading		Reference	
1	338.011	cps	34	degF
2	789.31	cps	78	degF
3	1553.28	cps	152	degF



TEMP-RTS (954)
70.00 lb 1.69 in OD 25.50 ft

TEMP 0.10 ft

Dataset:	run1/TEMP
Total Length:	25.50 ft
Total Weight:	70.00 lb
O.D.	1.69 in