



**YOUNGQUIST
BROTHERS, Inc**

GEOPHYSICAL LOGGING DIVISION

**FLUID CONDUCTIVITY
TEMPERATURE
LOG**

Company MWH
Well DZMW-1
Field LEE COUNTY - THREE OAKS
County LEE
State FLORIDA

Company MWH
Well DZMW-1
Field LEE COUNTY - THREE OAKS
County LEE
State FLORIDA

Location	Permanent Datum	Elevation	Other Services SEE COMMENTS
	Log Measured From		
	Drilling Measured From		

Date	29-JUNE-2005		
Run Number	THREE		
Depth Driller	1610'		
Depth Logger	1610'		
Bottom Logged Interval	1610'		
Top Log Interval	CASING		
Open Hole Size	12.25"		
Type Fluid	WATER		
Density / Viscosity	NA		
Max. Recorded Temp.	104 F		
Estimated Cement Top	NA		
Time Well Ready	1600		
Time Logger on Bottom	1630		
Equipment Number	103		
Location	FT. MYERS		
Recorded By	CATHY		
Witnessed By	G. YOUNG		

Borehole Record		Tubing Record	
Run Number	Bit	From	To
ONE	12.25"	SURFACE	505'
TWO	32.25"	SURFACE	497'
THREE	12.25"	SURFACE	1610'

Casing Record	Size	Wgt/L	Bottom
Surface String	24"	.375" W.T.	490'
Prod. String			
Production String			
Liner			

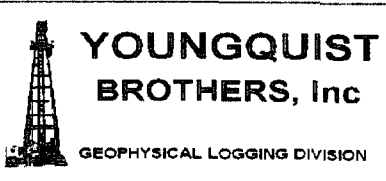
<<< Fold Here >>>

All interpretations are opinions based on inferences from electrical or other measurements and we cannot and do not guarantee the accuracy or correctness of any interpretation, and we shall not, except in the case of gross or willful negligence on our part, be liable or responsible for any loss, costs, damages, or expenses incurred or sustained by anyone resulting from any interpretation made by any of our officers, agents or employees. These interpretations are also subject to our general terms and conditions set out in our current Price Schedule.

Comments

OTHER SERVICES:

DUAL INDUCTION
SONIC
X-Y CALIPER / GAMMA RAY
FLOWMETER
BOREHOLE TELEVIEWER

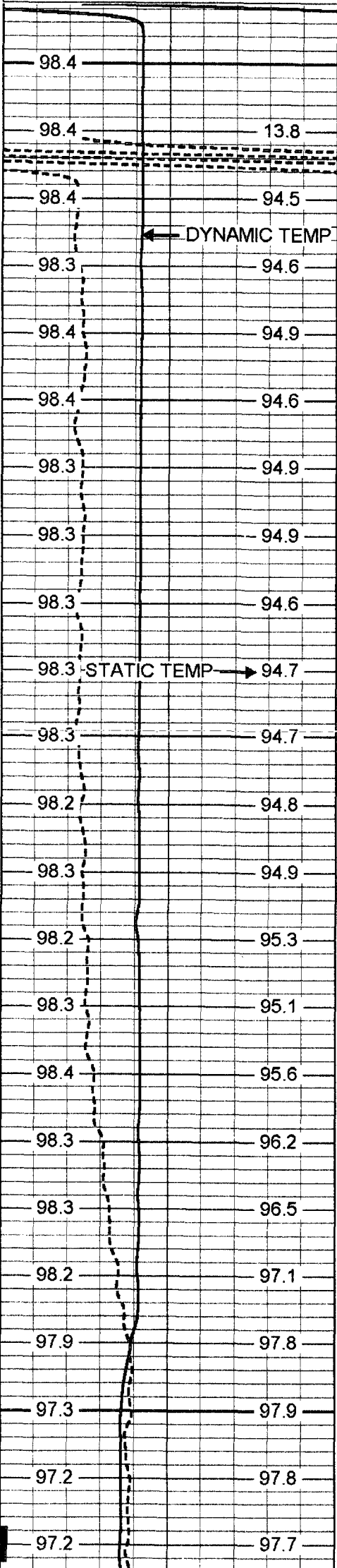


MERGED FCT

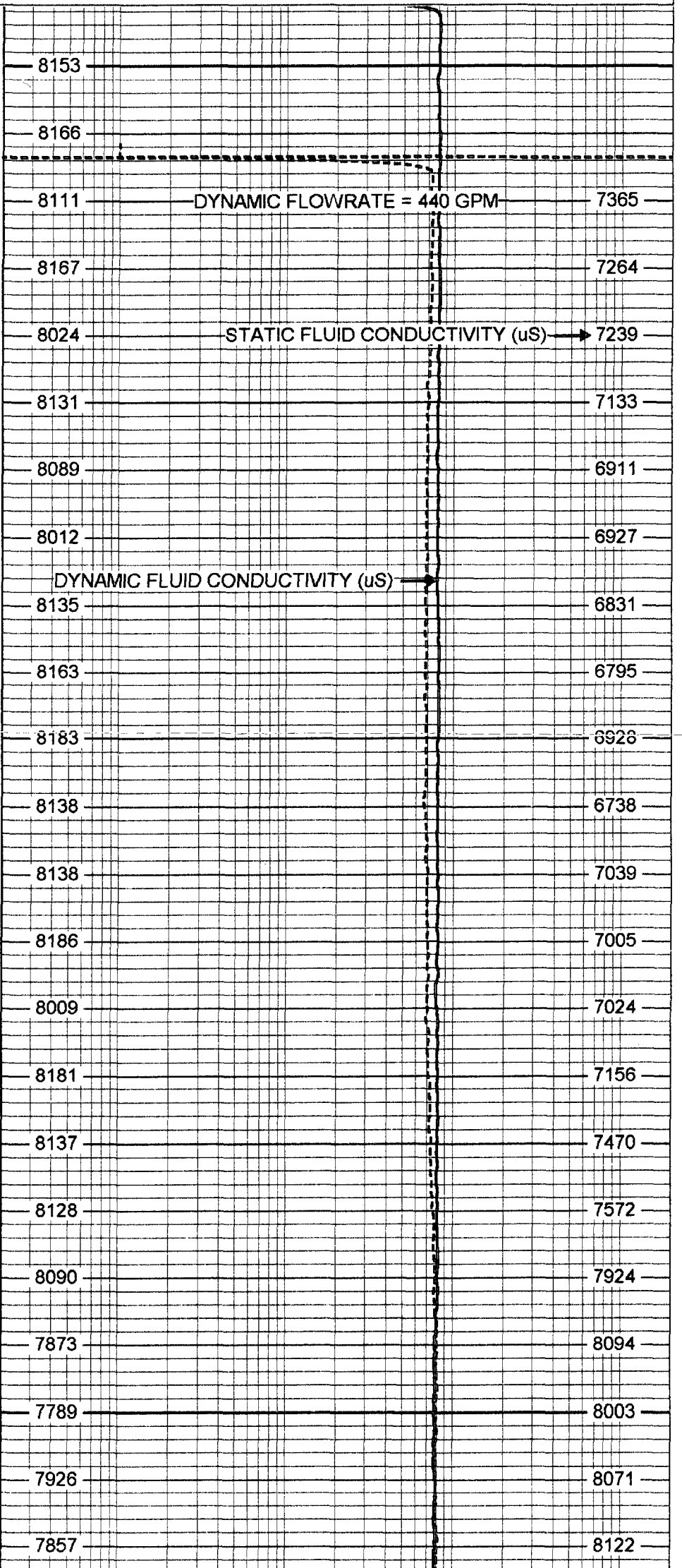
Database File: 3oaksmw.db
Dataset Pathname: run3/pass11
Presentation Format: frt_mg
Dataset Creation: Thu Jun 30 02:45:01 2005 by Log 6.2_B4

90 DYNAMIC TEMP (degF) 110
 90 STATIC TEMP (degF) 110

20 DYNAMIC FLUID CONDUCTIVITY (uS) 200000
 20 STATIC FLUID CONDUCTIVITY (uS) 200000



450
500
550
600
650



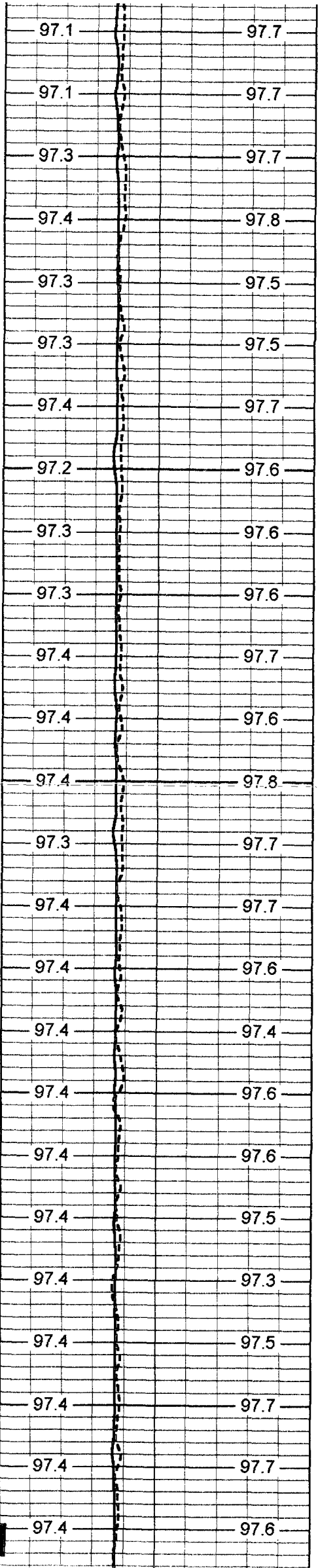
DYNAMIC FLOWRATE = 440 GPM

STATIC FLUID CONDUCTIVITY (uS)

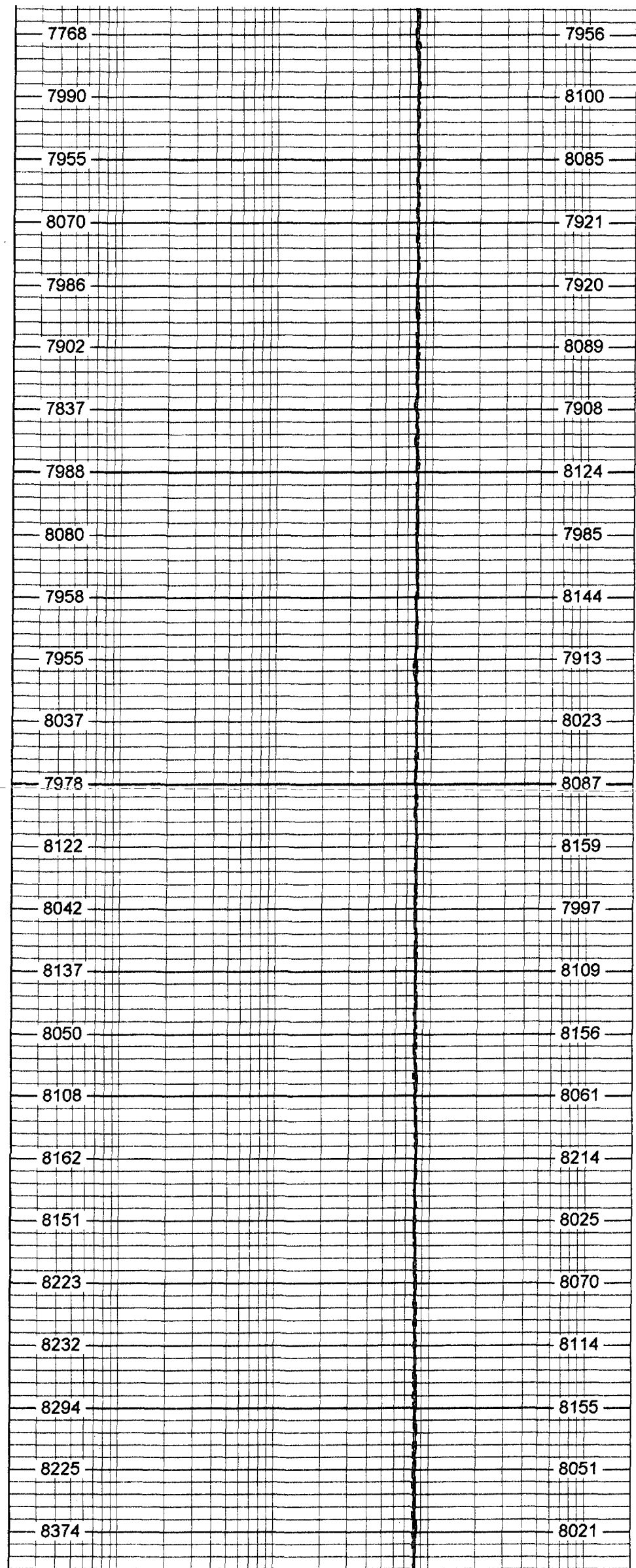
DYNAMIC FLUID CONDUCTIVITY (uS)

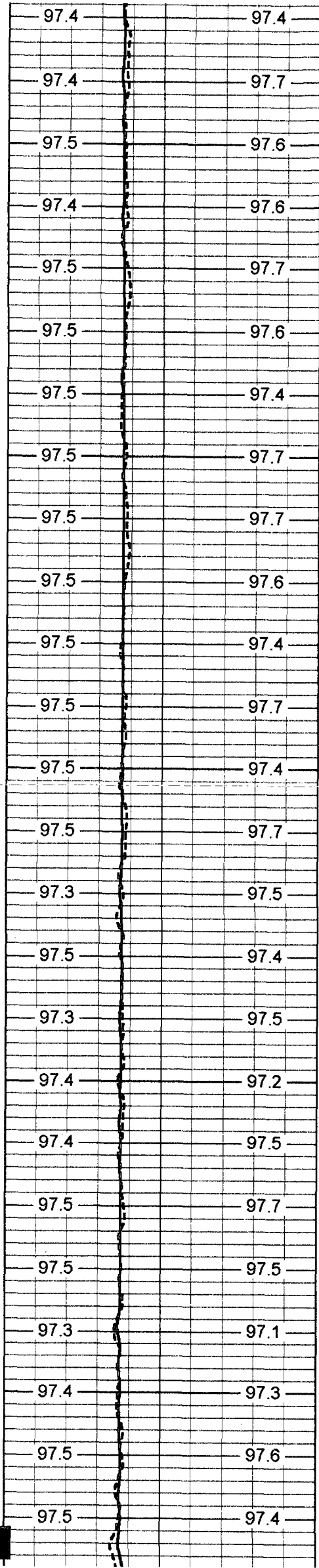
DYNAMIC TEMP

STATIC TEMP

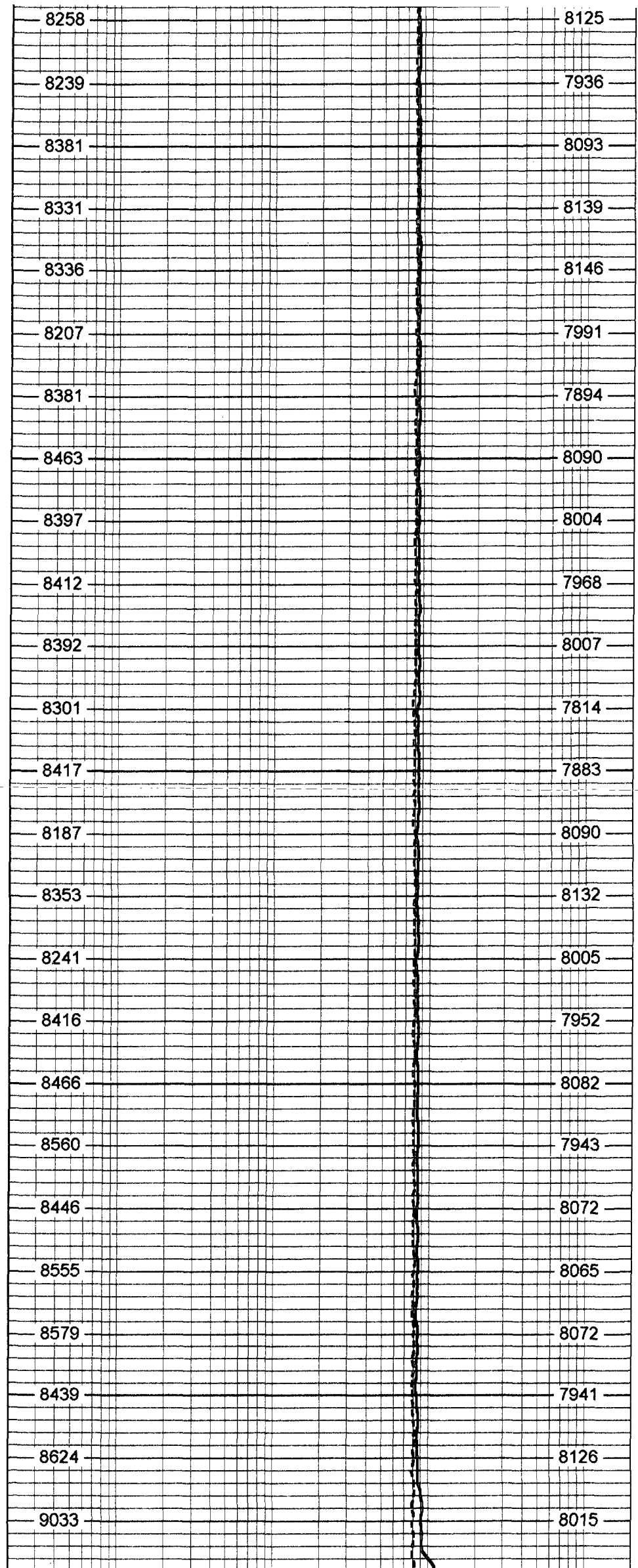


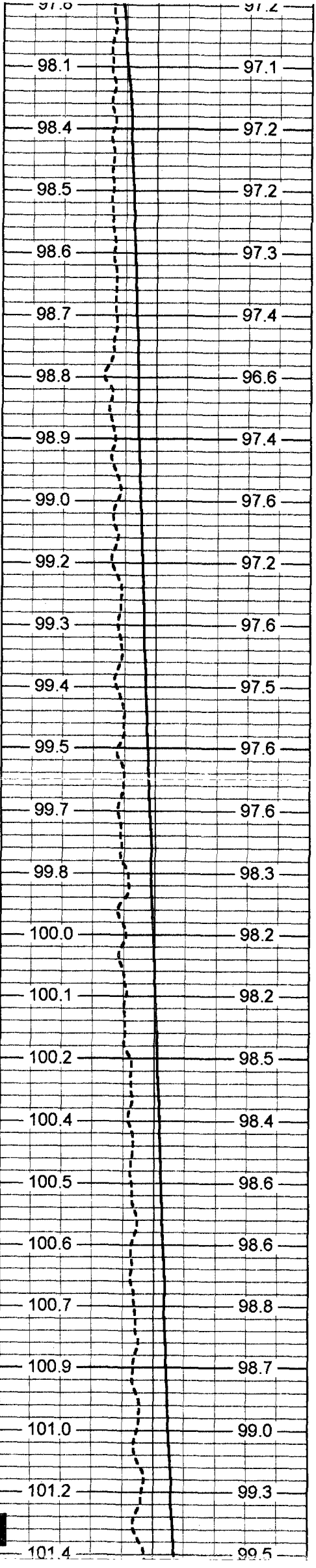
700
750
800
850
900





950
1000
1050
1100
1150





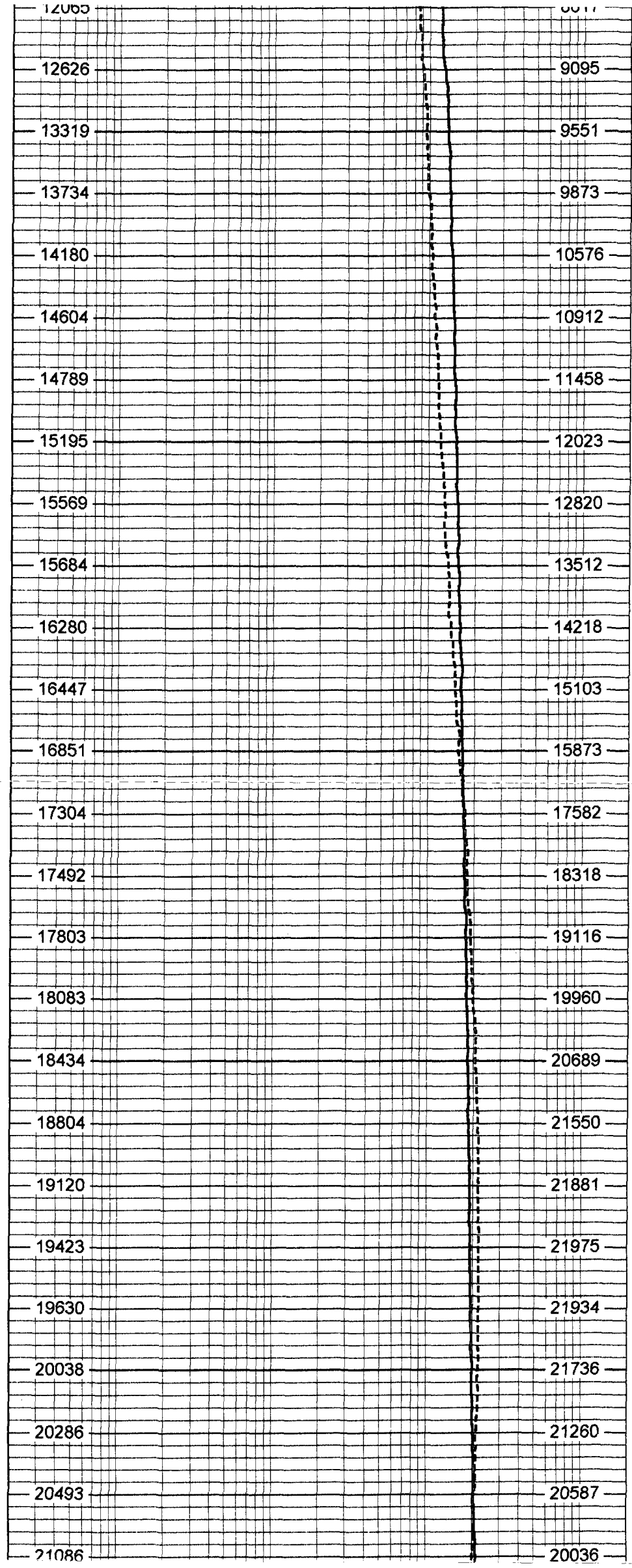
1200

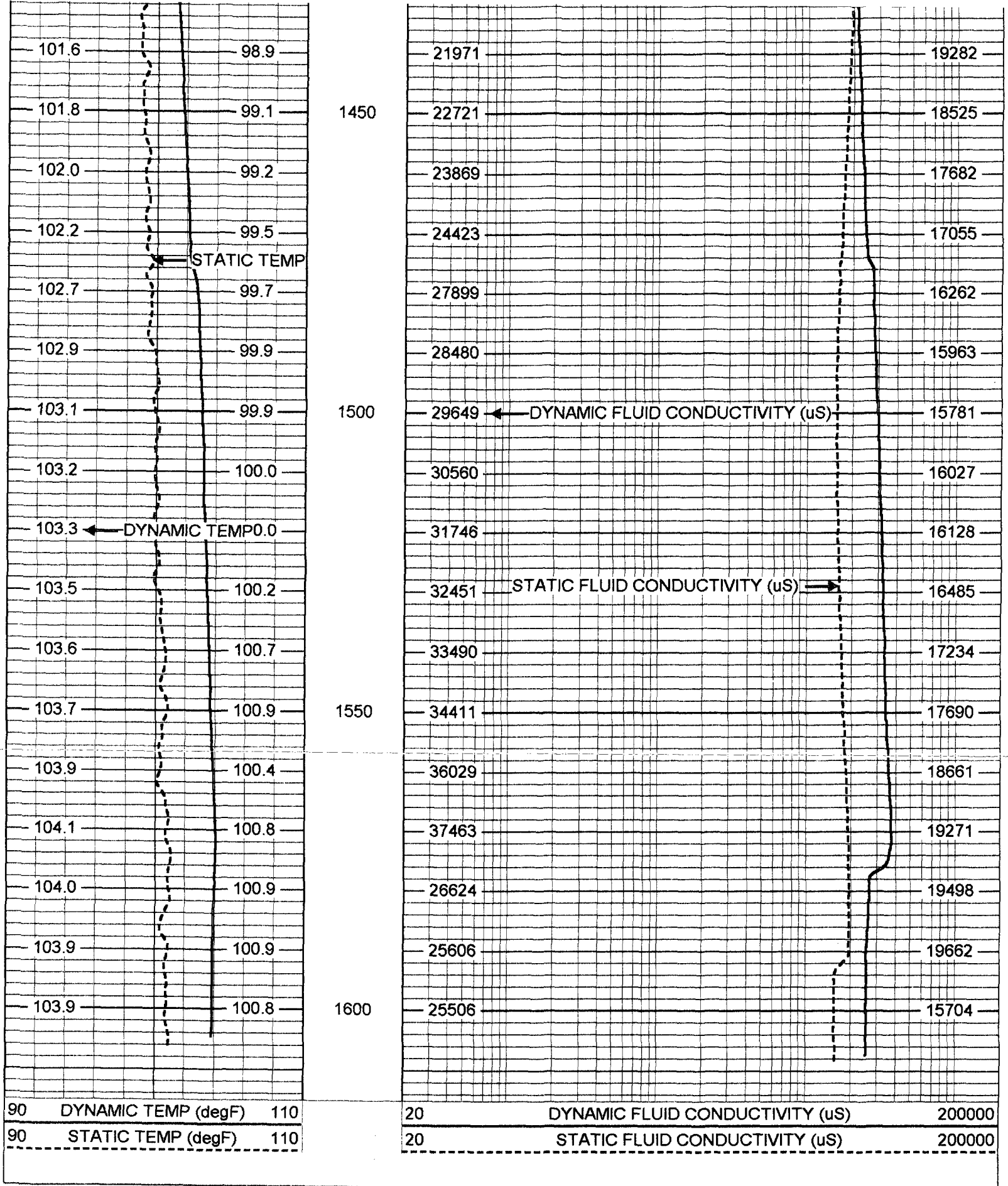
1250

1300

1350

1400





FRT Calibration Report

Serial Number: 31
 Tool Model: SONDEX
 Performed: Thu Apr 22 09:03:45 2004

Point #	Reading	Reference
1	30.817 cps	1000.000
2	171.328 cps	10000.000
3	445.517 cps	25000.000
4	965.867 cps	50000.000
5		

Temperature Calibration Report

Serial Number: 31
Tool Model: SONDEX
Performed: Thu Apr 22 09:31:10 2004

Point #	Reading		Reference	
1	128.595	cps	41	degF
2	265.557	cps	70	degF
3	697.393	cps	156	degF

