

WACS93931



**FLUID CONDUCTIVITY
TEMPERATURE
LOG**

Company CITY OF CAPE CORAL
Well IW-2
Field NORTH RO WTP
County LEE State FL

| | | | |
|----------|------------------------|-----------|----------------|
| Location | Permanent Datum | Elevation | Other Services |
| | Log Measured From | 14.08 | SEE COMMENTS |
| | Drilling Measured From | | |

| | |
|------------------------|-----------|
| Date | 13-FEB-07 |
| Run Number | THREE |
| Depth Driller | 1410' |
| Depth Logger | 1410' |
| Bottom Logged Interval | 1410' |
| Top Log Interval | CASING |
| Open Hole Size | 12.25" |
| Type Fluid | WATER |
| Density / Viscosity | N/A |
| Max. Recorded Temp. | N/A |
| Estimated Cement Top | N/A |
| Time Well Ready | 2400 |
| Time Logger on Bottom | 2430 |
| Equipment Number | 103 |
| Location | FT. MYERS |
| Recorded By | GOODWIN |
| Witnessed By | M. KNAPP |

| Borehole Record | | Borehole Record | |
|-----------------|---------------|-----------------|-------|
| Run Number | Bit | Run No. | Bit |
| ONE | 14.75" CASING | 584' | 584' |
| TWO | 52" CASING | 590' | 590' |
| THREE | 12.25" CASING | 1410' | 1410' |

| | | | | |
|-------------------|------|----------|---------|--------|
| Casing Record | Size | Wd/Ft | Top | Bottom |
| Surface String | 54" | 375 W.T. | SURFACE | 23' |
| Prod. String | 42" | 375 W.T. | SURFACE | |
| Production String | | | | |
| Liner | | | | |

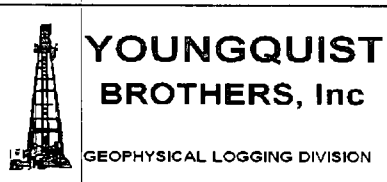
RECEIVED
DEPT SOUTH DISTRICT
2007 FEB 23 12

<<<Field Here>>>

All interpretations are opinions based on inferences from electrical or other measurements and we cannot and do not guarantee the accuracy or correctness of any interpretation, and we shall not, except in the case of gross or willful negligence on our part, be liable or responsible for any loss, costs, damages, or expenses incurred or sustained by anyone resulting from any interpretation made by any of our officers, agents or employees. These interpretations are also subject to our general terms and conditions set out in our current Price Schedule.

Comments

OTHER SERVICES:
X-Y CALIPER GAMMA RAY
DUAL INDUCTION LL3 W/SP
BOREHOLE COMPENSATED SONIC FLOWMETER
BOREHOLE TELEVIEWER

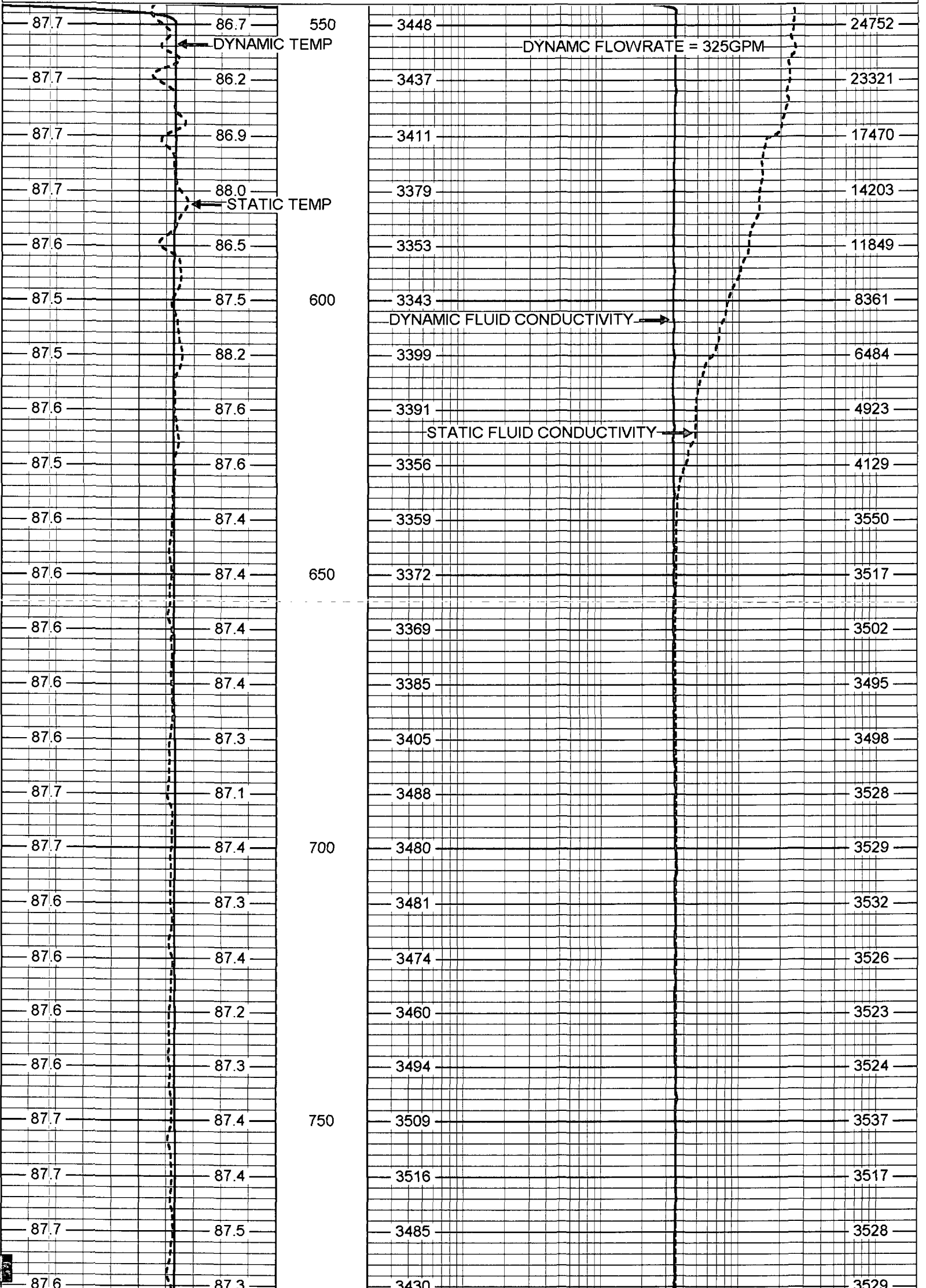


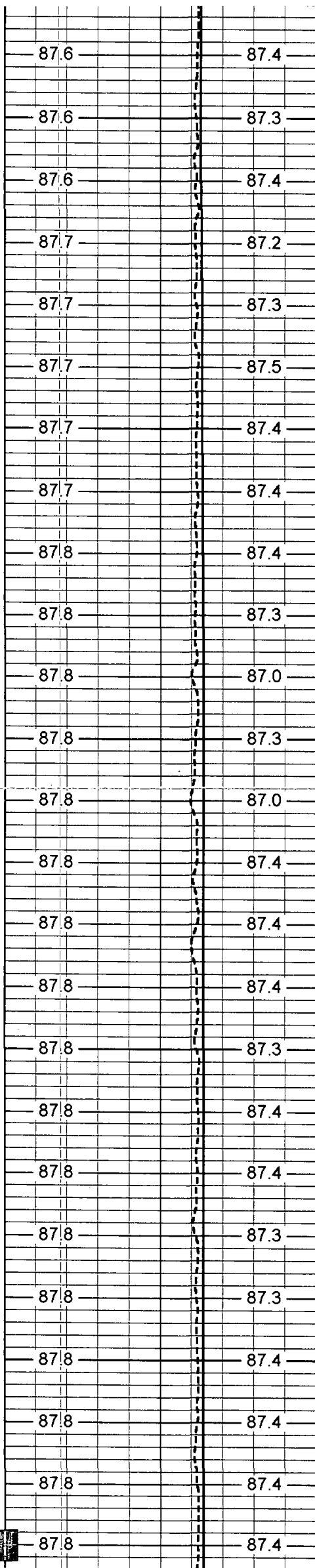
MERGED FCT

Database File: ncciw2.db
Dataset Pathname: run3/pass12
Presentation Format: frt_mg
Dataset Creation: Wed Feb 14 12:23:12 2007 by Log 6.2_B4
Checked by: Depth in Feet scaled 1:240

75 DYNAMIC TEMP (degF) 95
 75 STATIC TEMP (degF) 95

20 DYNAMIC FLUID CONDUCTIVITY (uS) 200000
 20 STATIC FLUID CONDUCTIVITY (uS) 200000





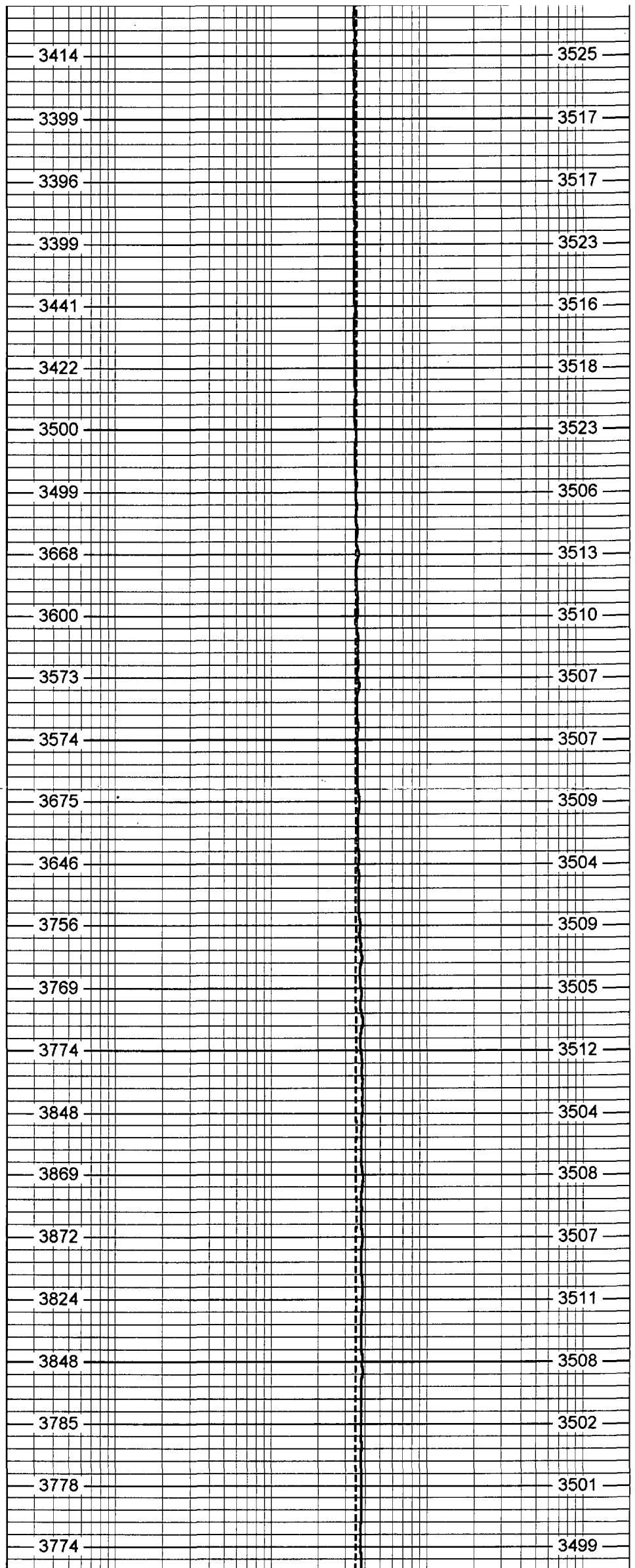
800

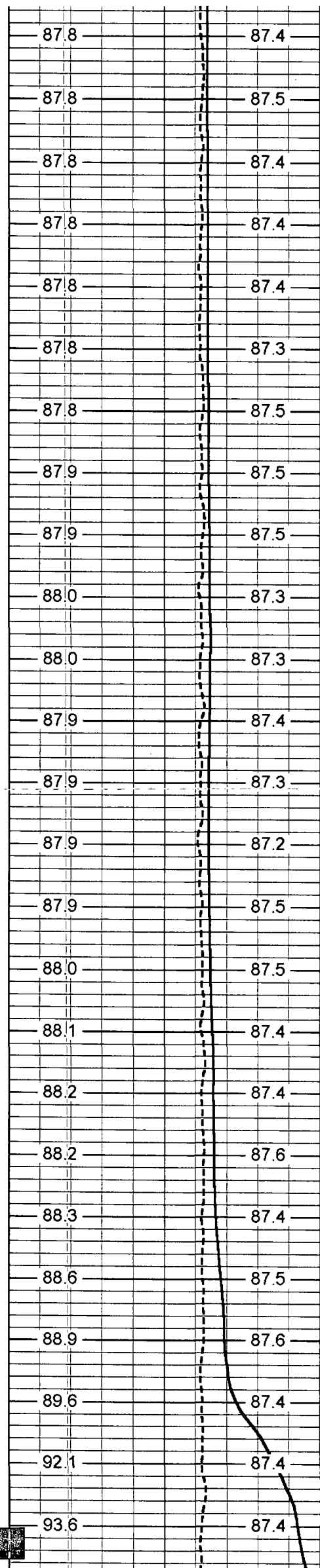
850

900

950

1000





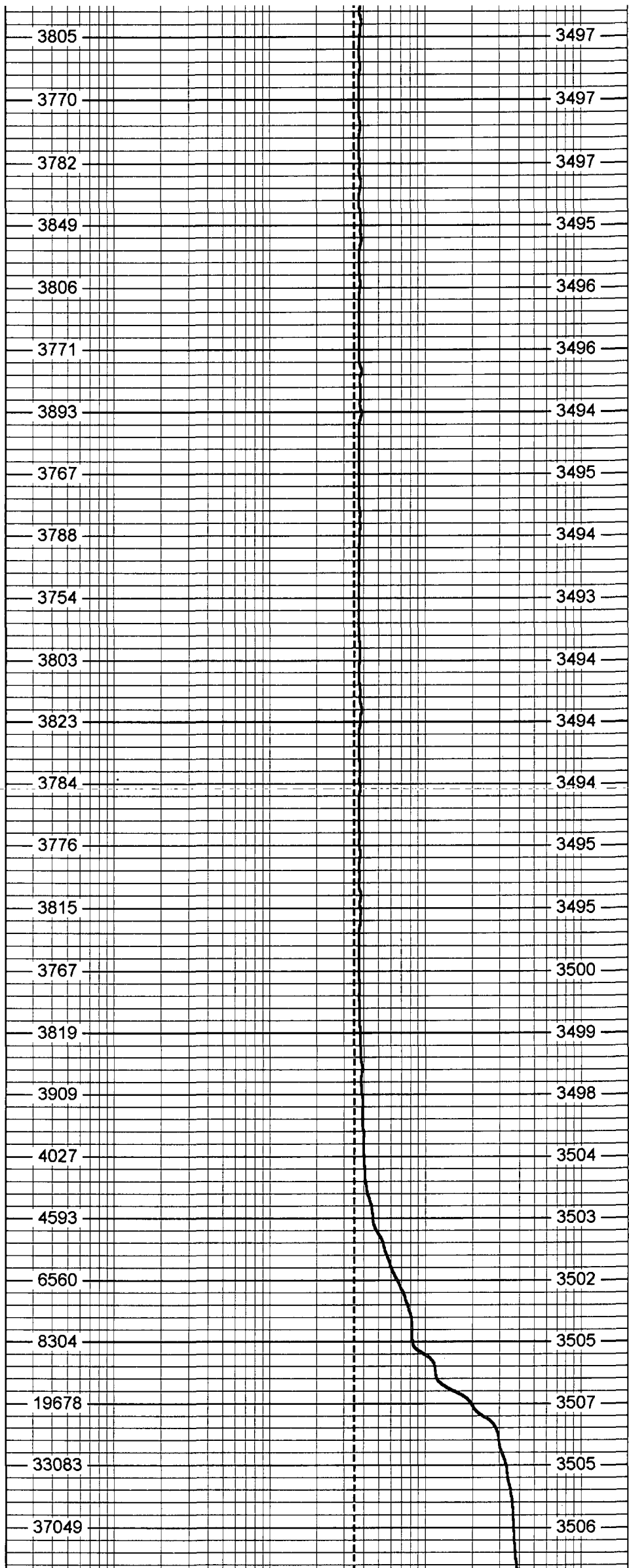
1050

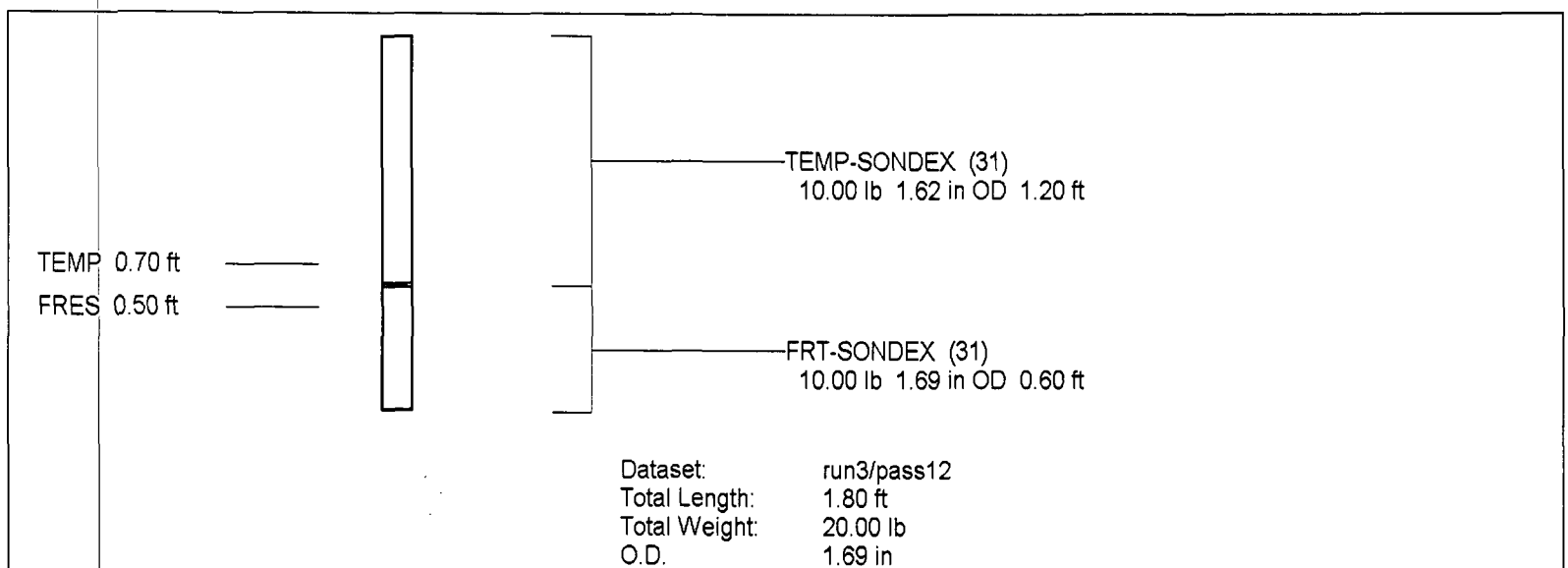
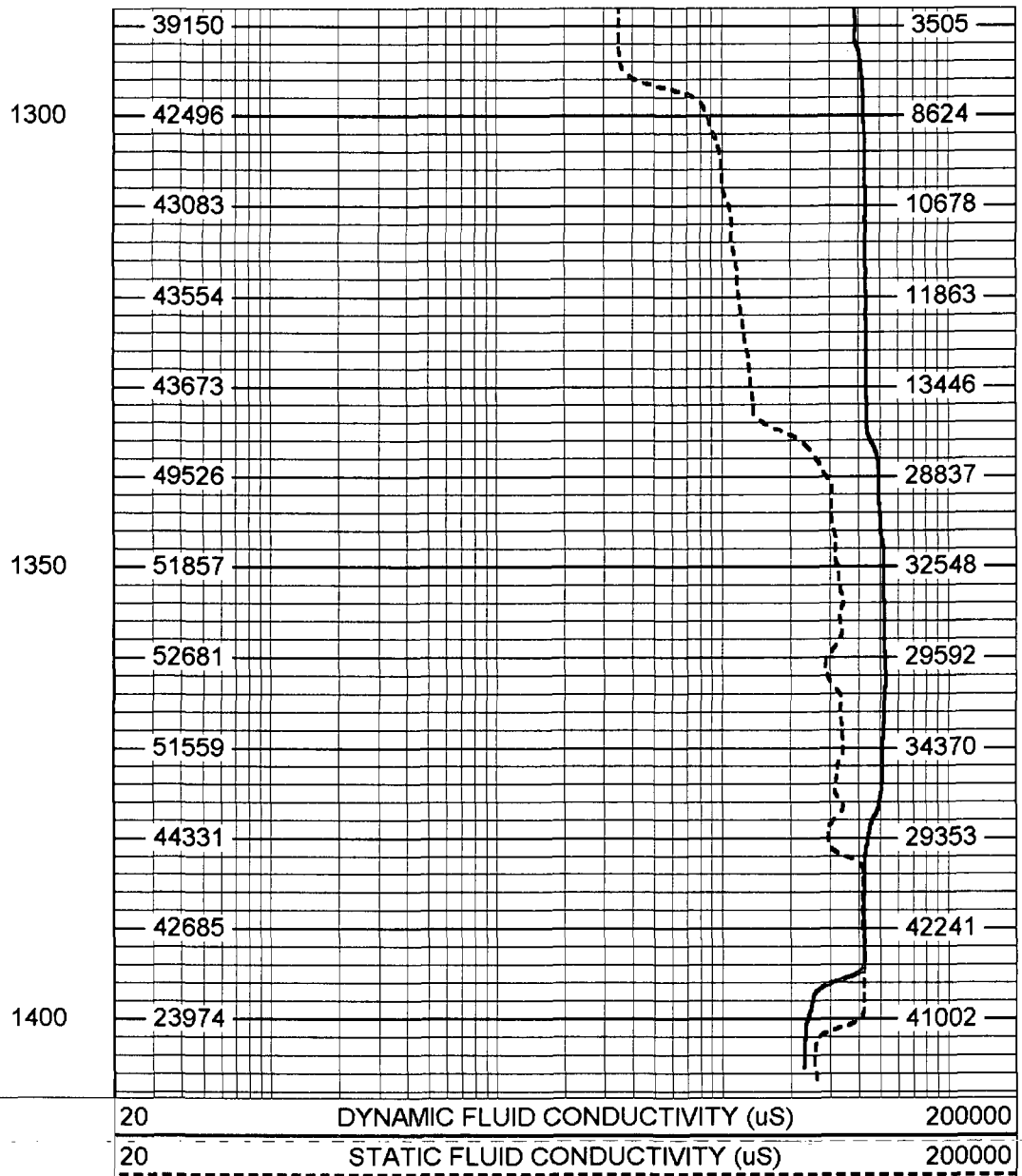
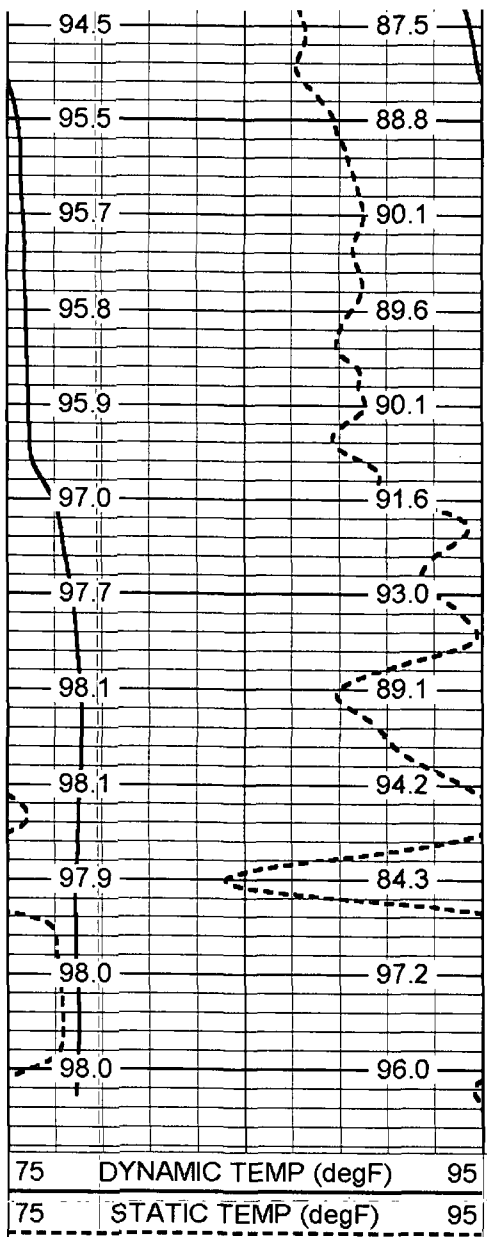
1100

1150

1200

1250





FRT Calibration Report

| | | | |
|----------------|--|--------------------------|--|
| Serial Number: | | 31 | |
| Tool Model: | | SONDEX | |
| Performed: | | Wed Jul 12 08:38:31 2006 | |

| Point # | Reading | | Reference |
|---------|---------|-----|-----------|
| 1 | 30.817 | cps | 1000.000 |
| 2 | 171.328 | cps | 10000.000 |
| 3 | 448.517 | cps | 25000.000 |

4
5
6

965.867

cps
cps
cps

50000.000

Temperature Calibration Report

Serial Number: 31
Tool Model: SONDEX
Performed: Wed Jul 12 08:39:49 2006

| Point # | Reading | | Reference | |
|---------|---------|-----|-----------|------|
| 1 | 128.595 | cps | 41 | degF |
| 2 | 265.492 | cps | 70 | degF |
| 3 | 697.393 | cps | 156 | degF |