



FLUID CONDUCTIVITY
TEMPERATURE
RECEIVED
EOG

AUG 24 1999

Company MISSIMER INTERNATIONAL
Well IW - 1
Field I.W.A
Country LEE
State/Prv FLORIDA

Company MISSIMER INTERNATIONAL
Well DEEP INJECTION WELL #1
Field ISLAND WATER ASSOCIATION
Country LEE
State/Prv FLORIDA

Location
Permanent Datum PAD Elevation 5'
Log Measured From PAD
Drilling Measured From PAD
Other Services SEE REMARKS
Elevation K.B. D.F. G.L.

Date	11-AUG-99
Run Number	THREE
Depth Driller	970'
Depth Logger	971'
Bottom Logged Interval	970'
Top Log Interval	30'
Open Hole Size	32.5"
Type Fluid	WATER
Density / Viscosity	N/A
Max. Recorded Temp.	N/A
Estimated Cement Top	N/A
Time Well Ready	21:30 8/10/99
Time Logger on Bottom	05:00 STATIC
Equipment Number	103
Location	FTMYERS
Recorded By	E.X.CALLAHAN
Witnessed By	R.STROSS

Borehole Record		Tubing Record					
Run Number	Bit Size	From	To	Size	Weight	From	To
ONE	40.5"	SURFACE	403'				
TWO	32.5"	398'	970'				

Casing Record		Tubing Record	
Surface String	Size	Top	Bottom
Prot. String	34"	375' W.T.	
Production String		SURFACE	
Liner			398'

<<< Fold Here >>>

All interpretations are opinions based on inferences from electrical or other measurements and we cannot and do not guarantee the accuracy or correctness of any interpretation, and we shall not, except in the case of gross or willful negligence on our part, be liable or responsible for any loss, costs, damages, or expenses incurred or sustained by anyone resulting from any interpretation made by any of our officers, agents or employees. These interpretations are also subject to our general terms and conditions set out in our current Price Schedule.

Comments

OTHER SERVICES: XY CALIPER GAMMA RAY, DUAL INDUCTION SP,
COMPENSATED SONIC VDL, FLOWMETER

DYNAMIC RUN WITH WELL FLOWING 220 GPM.



Entered into
OCULUS
South District

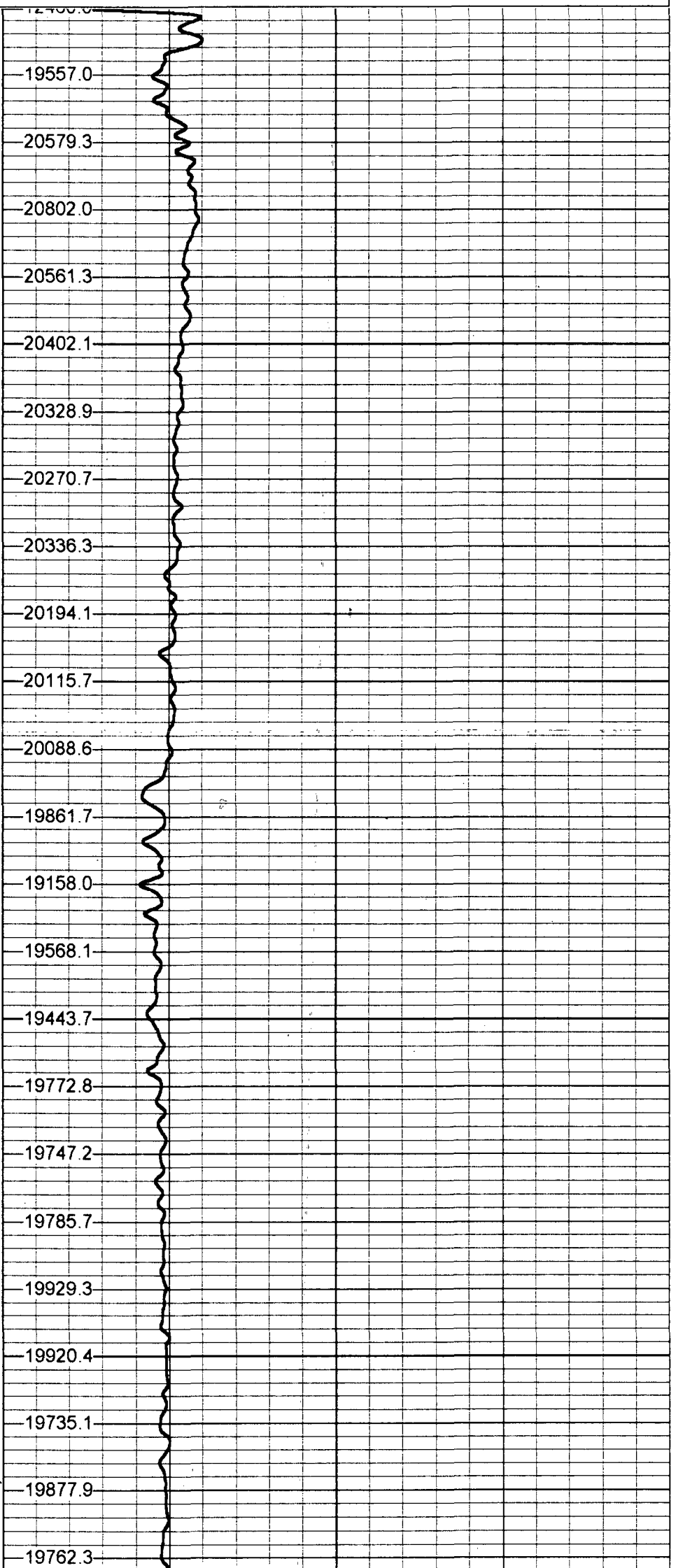
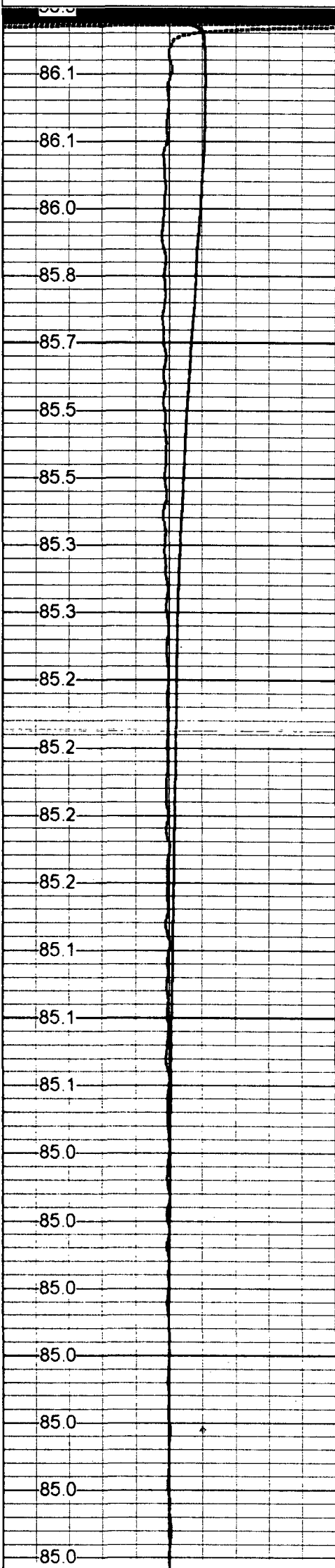


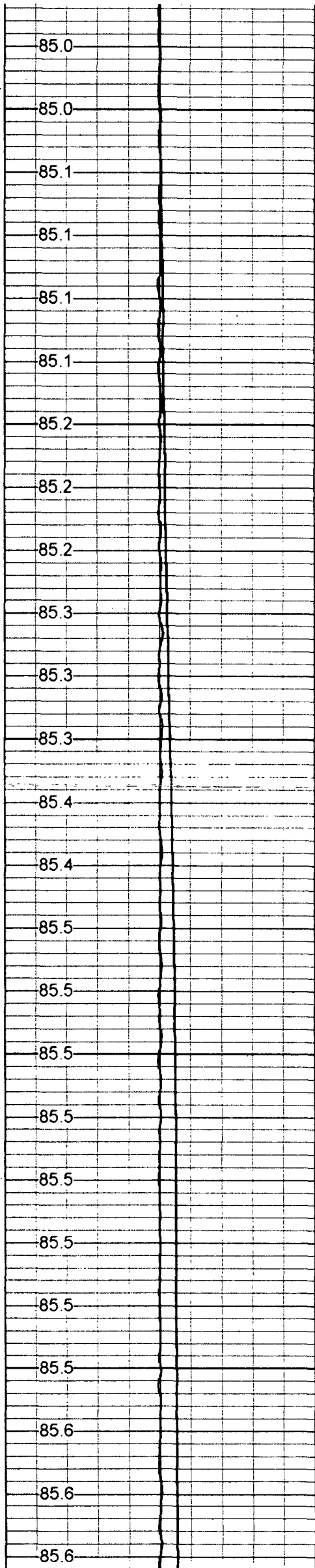
STATIC PASS

Database File: saniw1.db
Dataset Pathname: run3/pass1
Presentation Format: frtlin.prs

80 TEMPERATURE (degF) 90
-0.5 DELTA TEMP (degF) 0.5

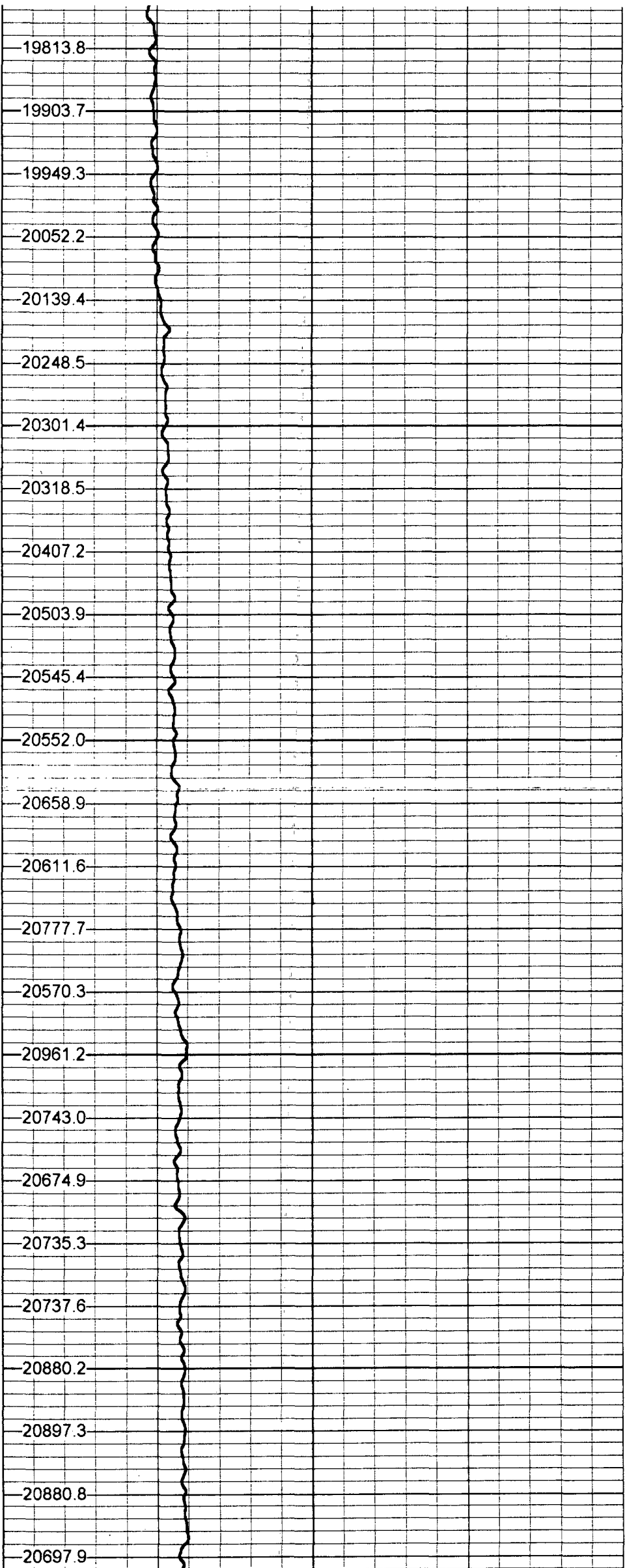
15000 FLUID CONDUCTIVITY 35000

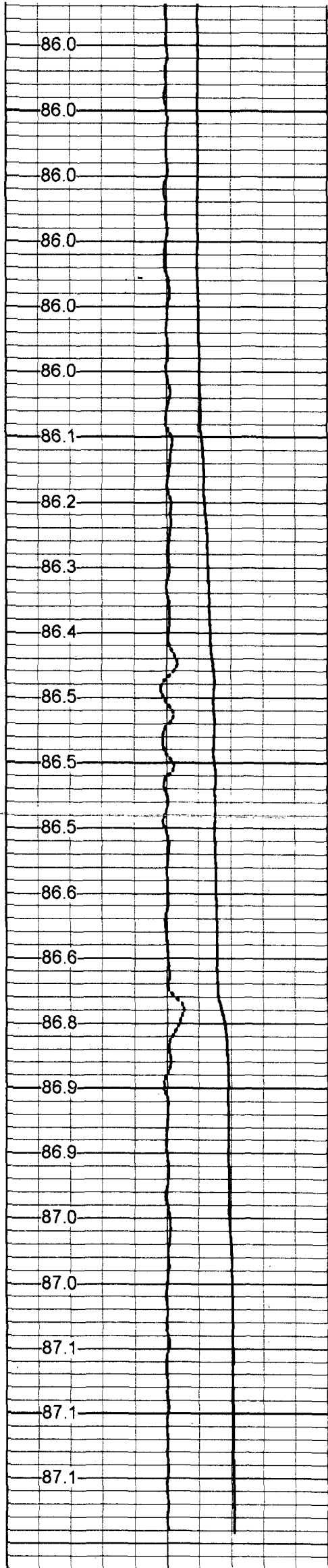




300

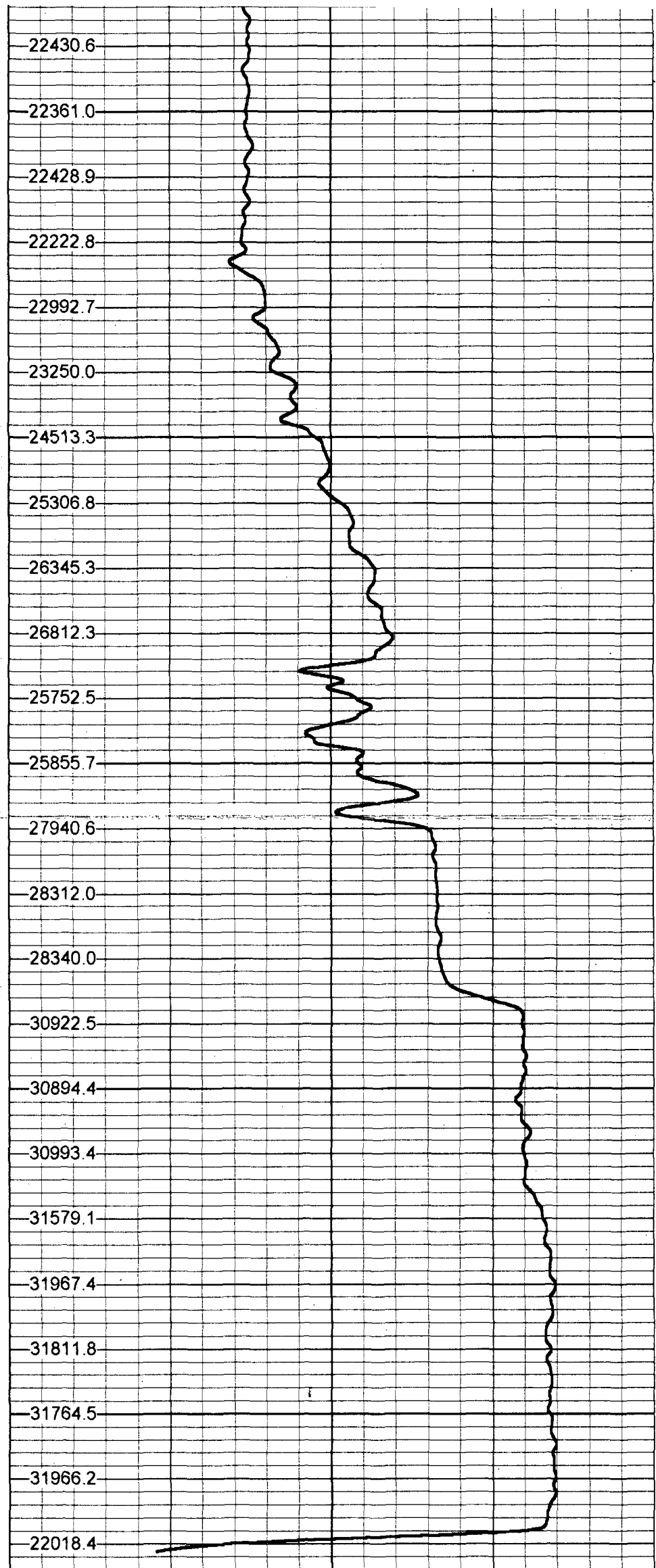
400





800

900



80 TEMPERATURE (degF) 90
-0.5 DELTA TEMP (degF) 0.5

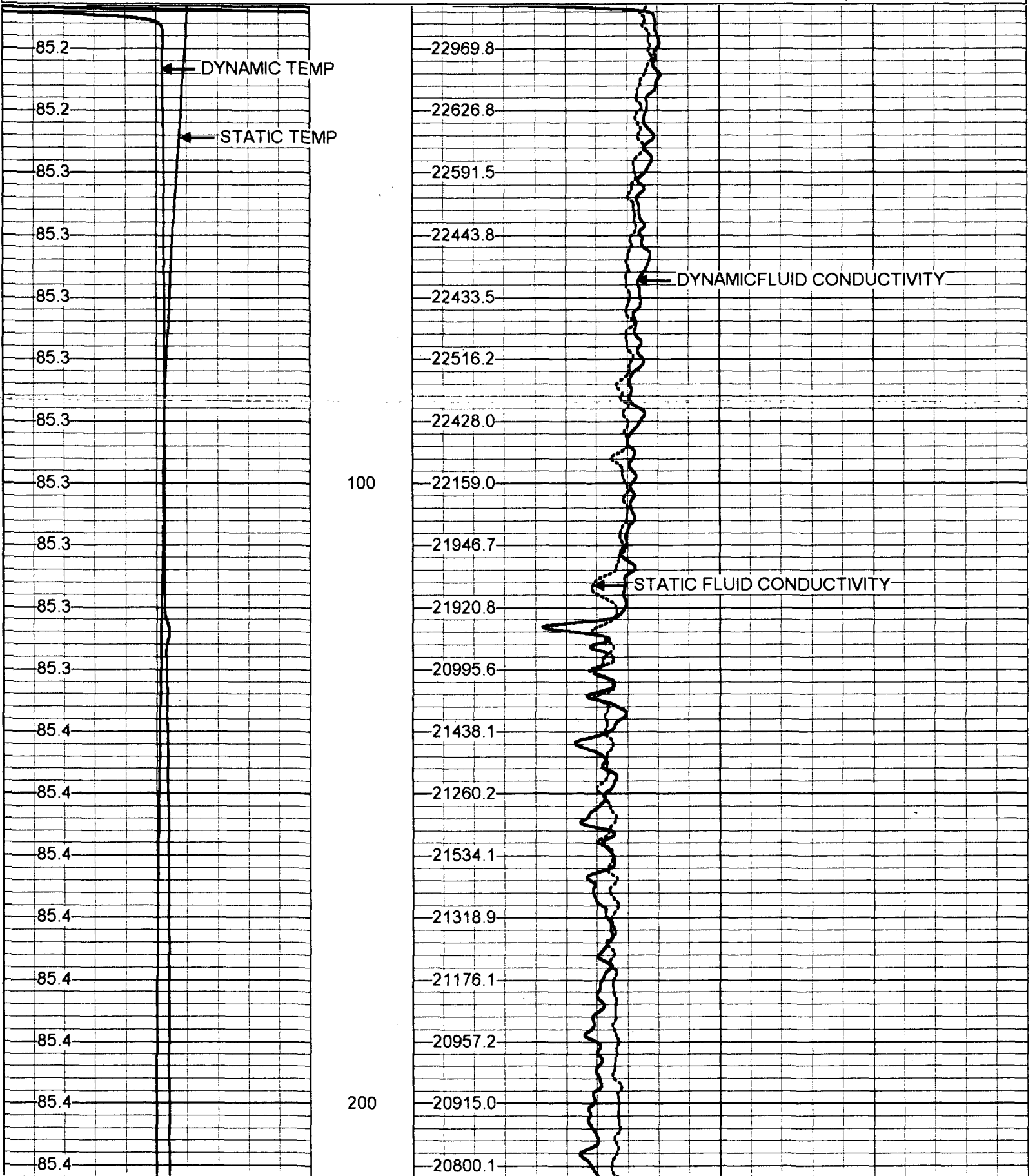
15000 FLUID CONDUCTIVITY 35000

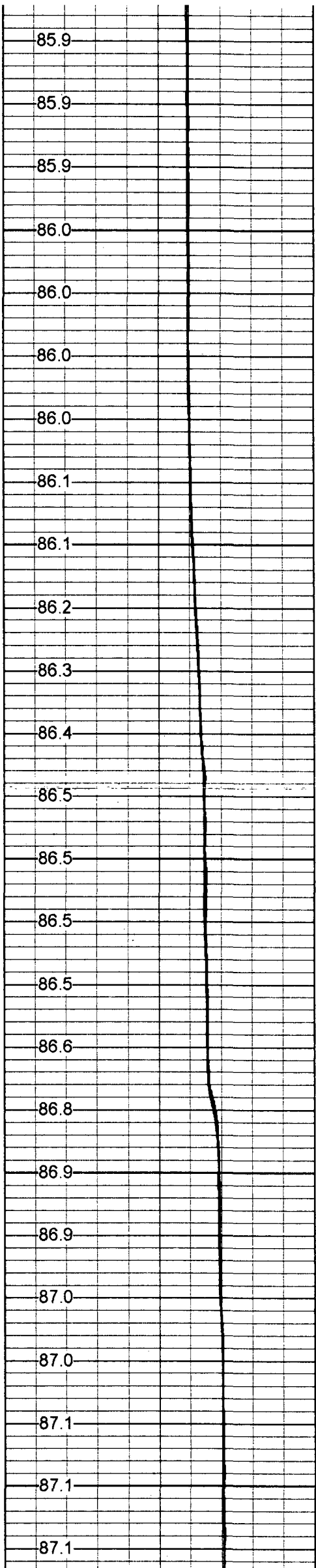


MERGED PASS

Database File: saniw1.db
Dataset Pathname: run3/pass29
Presentation Format: frt_mrg.prs
Dataset Creation: Wed Aug 11 13:36:34 1999 by Log VER_5.4
Charted by: Depth in Feet scaled 1:240

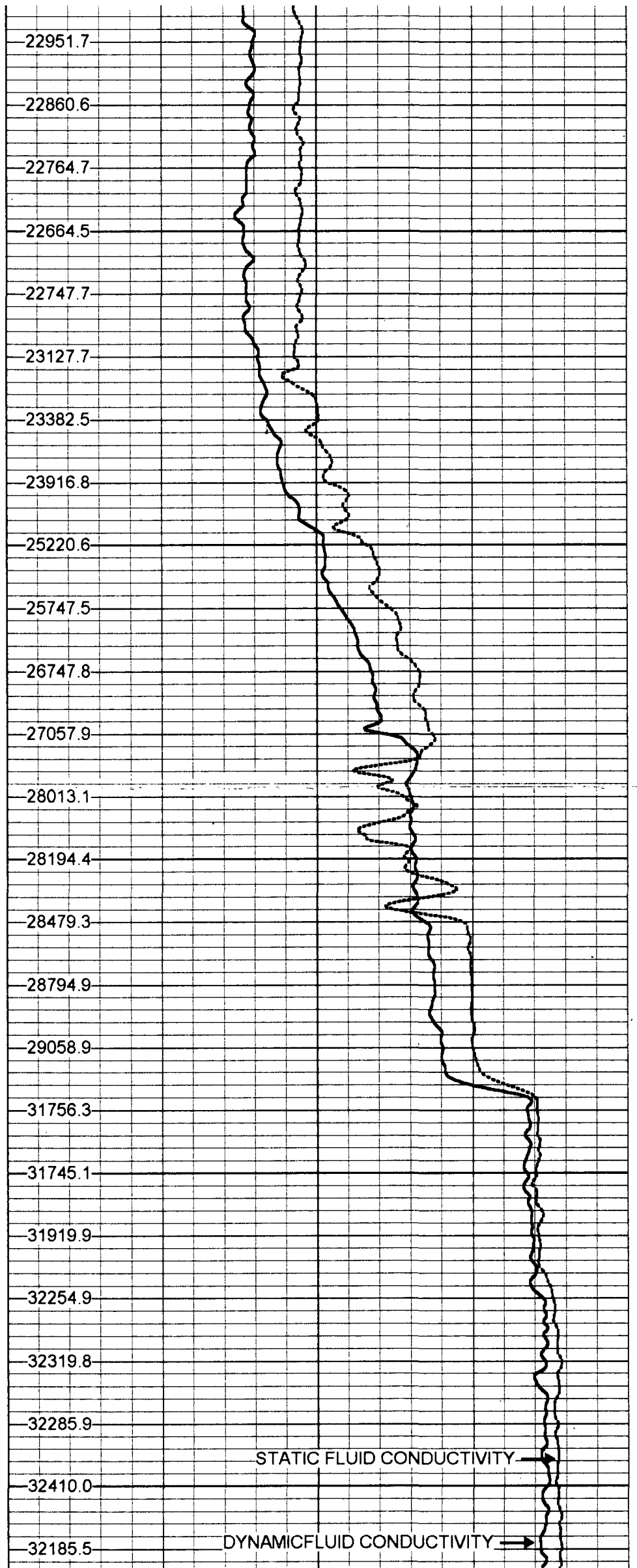
80	TEMPERATURE (degF)	90	15000	DYNAMIC FLUID CONDUCTIVITY	35000
80	STATIC TEMP (degF)	90	15000	STATIC FLUID CONDUCTIVITY	35000





800

900



STATIC FLUID CONDUCTIVITY →

DYNAMIC FLUID CONDUCTIVITY →

80	TEMPERATURE (degF)	90
80	STATIC TEMP (degF)	90

15000	DYNAMIC FLUID CONDUCTIVITY	35000
15000	STATIC FLUID CONDUCTIVITY	35000

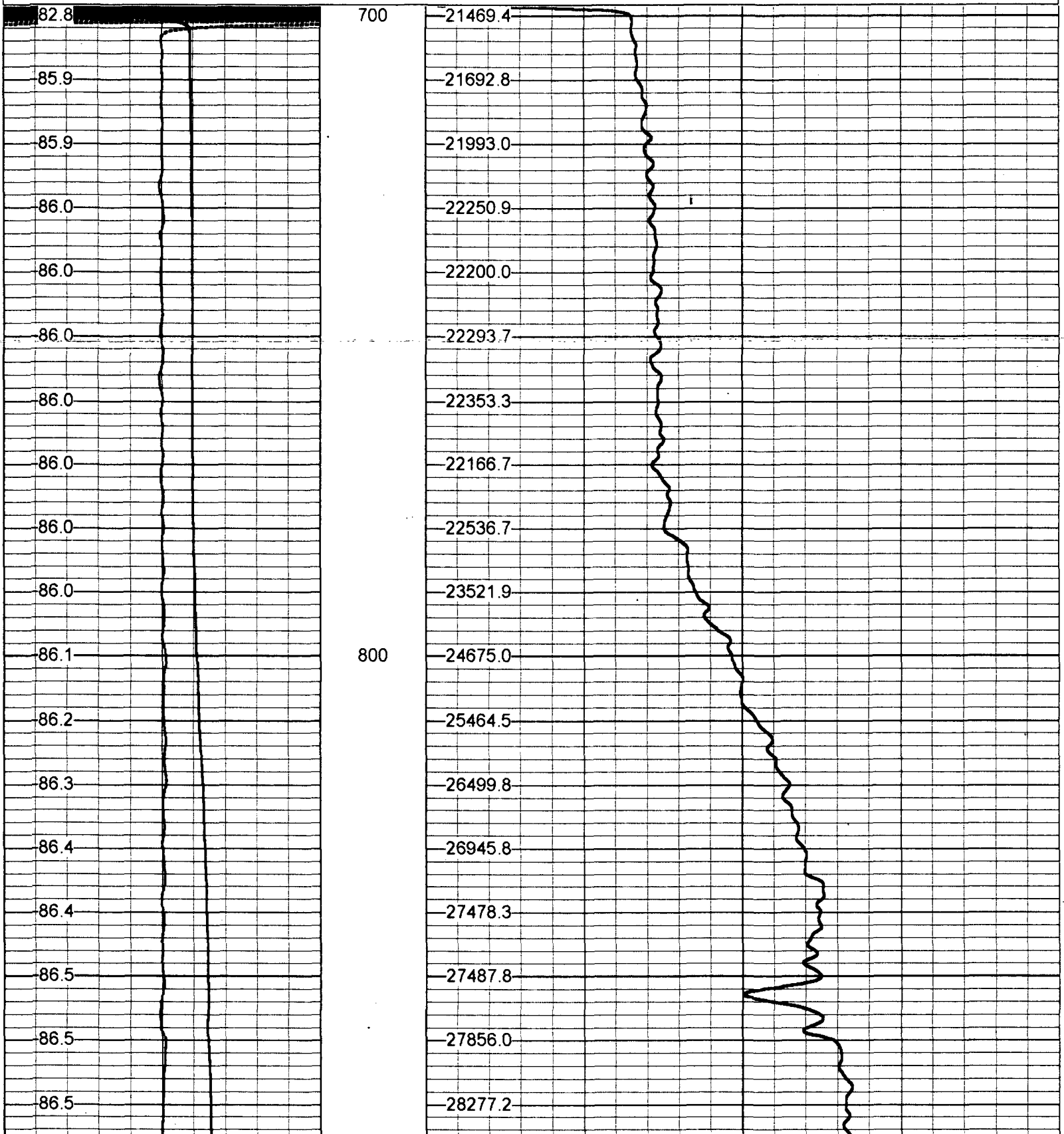


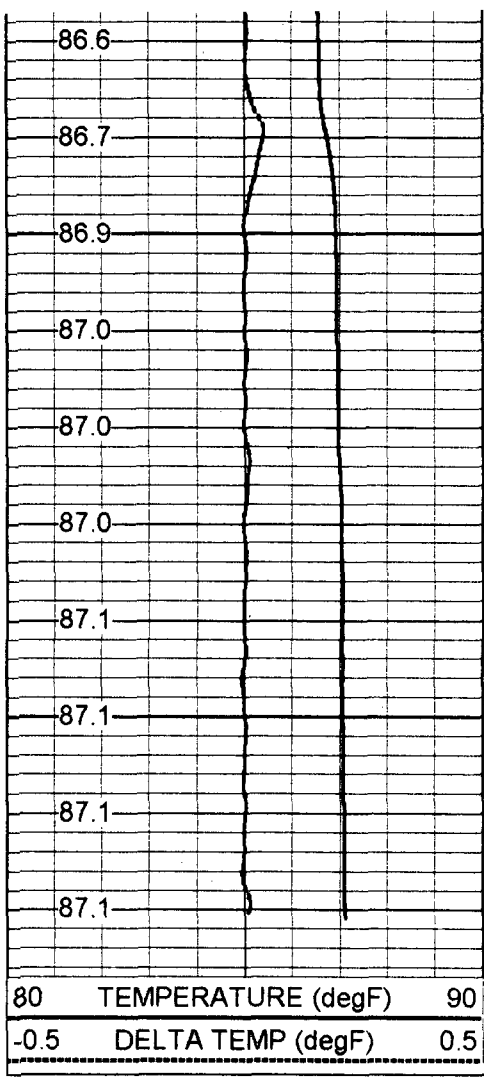
DYNAMIC REPEAT

Database File: saniw1.db
 Dataset Pathname: run3/pass30
 Presentation Format: frtlin.prs
 Dataset Creation: Wed Aug 11 13:50:34 1999 by Log VER_5.4
 Charted by: Depth in Feet scaled 1:240

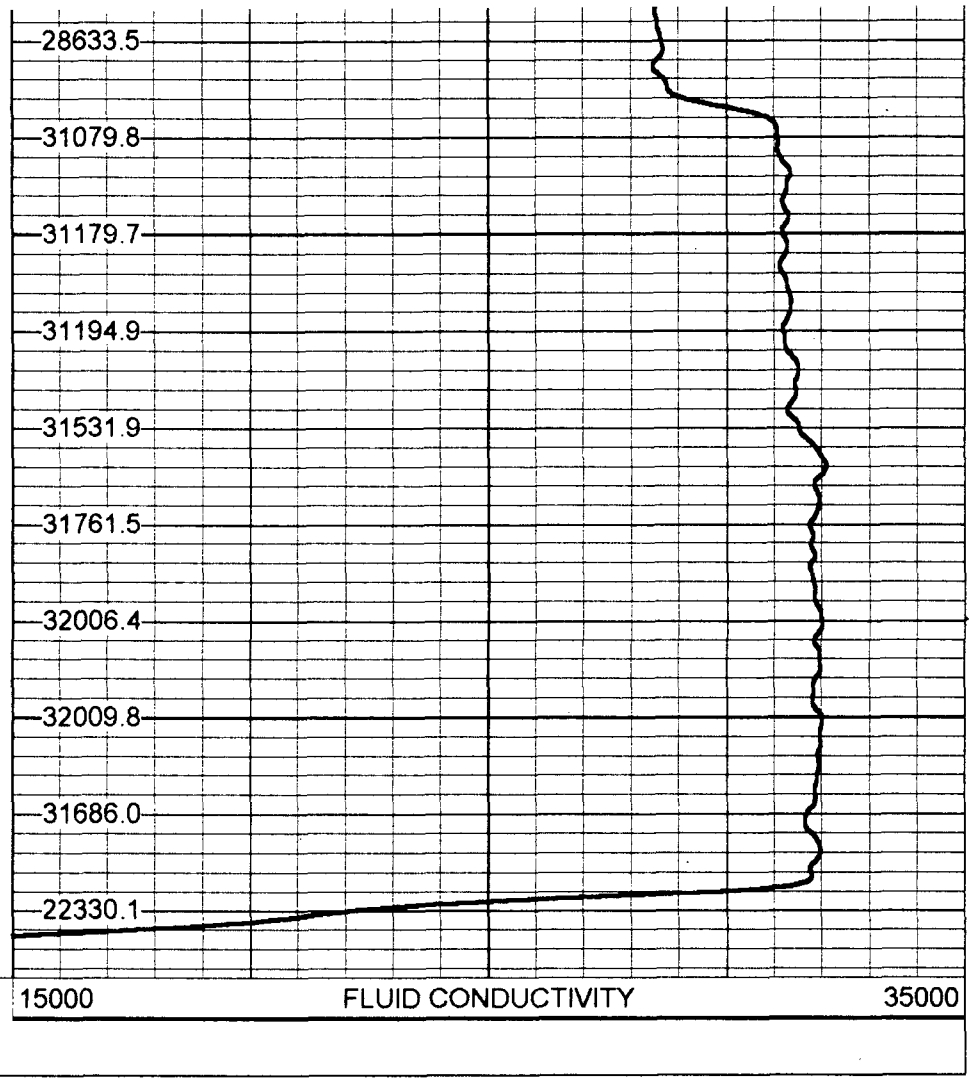
80	TEMPERATURE (degF)	90
-0.5	DELTA TEMP (degF)	0.5

15000	FLUID CONDUCTIVITY	35000
-------	--------------------	-------





900



80 TEMPERATURE (degF) 90
-0.5 DELTA TEMP (degF) 0.5

15000 FLUID CONDUCTIVITY 35000

