



TEMPERATURE LOG

Company WATER RESOURCE SLTNS.
 Well IW - 1
 Field PUNTA GORDA W.W.T.P.
 Country CHARLOTTE
 State/Prv FL

Company WATER RESOURCE SOLUTIONS INC.
 Well IW - 1
 Field PUNTA GORDA W.W.T.P.
 Country CHARLOTTE
 State/Prv FLORIDA

Location NW 1/4, NE 1/4 : S7, T41S, R24E

Permanent Datum PAD Elevation 24'
 Log Measured From PAD
 Drilling Measured From PAD
 Other Services SEE COMMENTS
 Elevation K.B. 27', D.F. 27', G.L. 24'

Date	10/4/00				
Run Number	NINE				
Depth Driller	2505'				
Depth Logger	2507'				
Bottom Logged Interval	2507'				
Top Log Interval	CASING				
Open Hole Size	12.25"				
Type Fluid	WATER				
Density / Viscosity	NA				
Max. Recorded Temp.	106				
Estimated Cement Top	NA				
Time Well Ready	1000				
Time Logger on Bottom	1030				
Equipment Number	103				
Location	FT. MYERS				
Recorded By	DENISON				
Witnessed By	F. PROCTA				

Borehole Record		Tubing Record				
Run Number	Bit Size	From	To	Weight	From	To
ONE	46.5"	SURFACE	507'			
TWO	12.25"	CASING	1730'			
THREE	36.5"	CASING	1716'			
FOUR	12.25"	CASING	2505'			
Casing Record		Size	Wgt/ft	Top	Bottom	
Surface String	48"		.375	SURFACE	42'	
Prot. String	38"		.375	SURFACE	500'	
Production String	30"		.375	SURFACE	1710'	
Liner						

<<< Fold Here >>>

All interpretations are opinions based on inferences from electrical or other measurements and we cannot and do not guarantee the accuracy or correctness of any interpretation, and we shall not, except in the case of gross or willful negligence on our part, be liable or responsible for any loss, costs, damages, or expenses incurred or sustained by anyone resulting from any interpretation made by any of our officers, agents or employees. These interpretations are also subject to our general terms and conditions set out in our current Price Schedule.

Comments

BOREHOLE COMPENSATED SONIC
 X-Y CALIPER/GAMMA RAY
 DUAL INDUCTION LL3/SP
 VIDEO



TEMPERATURE SURVEY

Database File: puntaiw1.db
 Dataset Pathname: run9/pass2
 Presentation Format: temp.prs

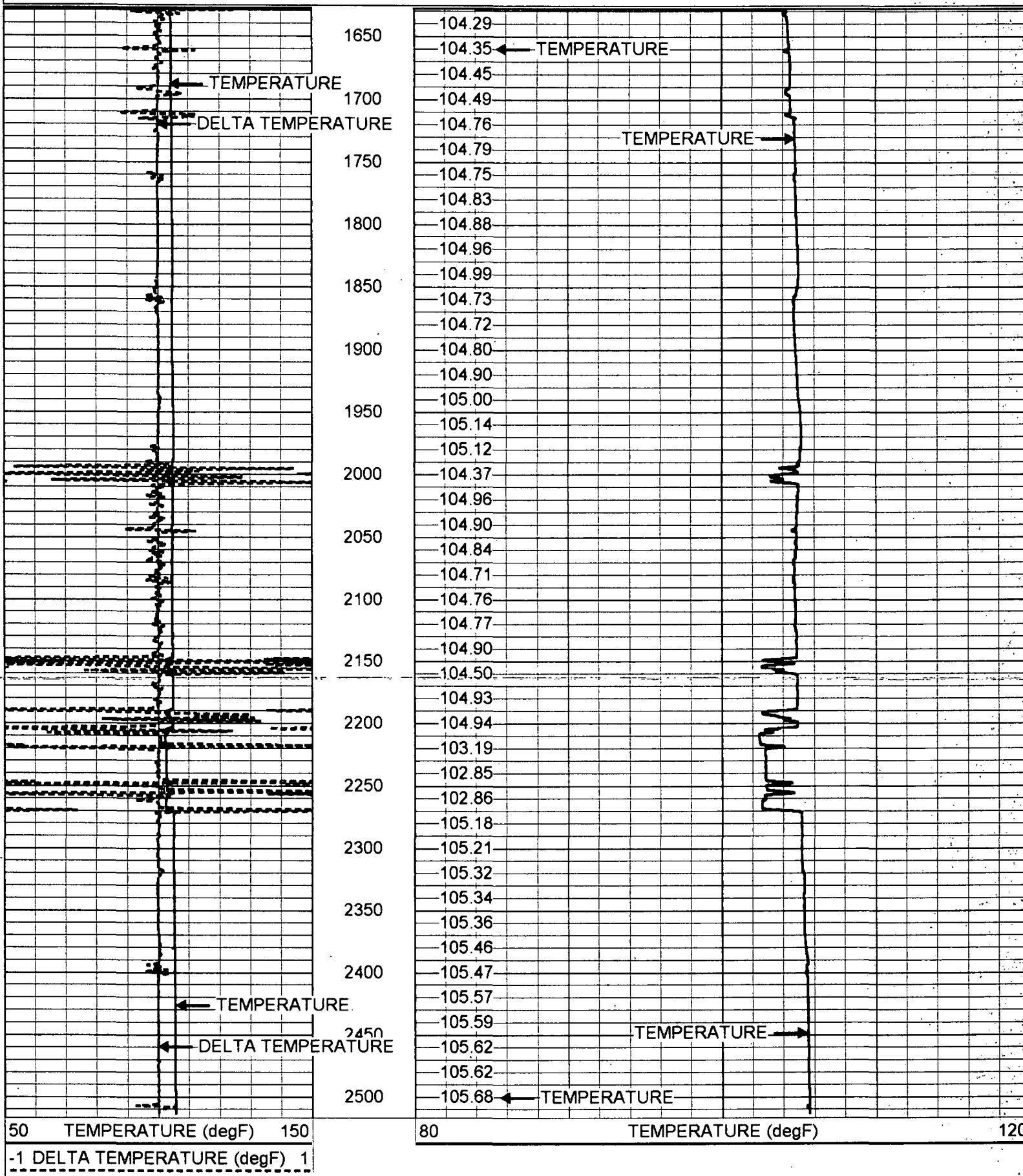
50 TEMPERATURE (degF) 150

80

TEMPERATURE (degF)

120

-1 DELTA TEMPERATURE (degF) 1



50 TEMPERATURE (degF) 150

80

TEMPERATURE (degF)

120

-1 DELTA TEMPERATURE (degF) 1



FLORIDA
GEOPHYSICAL LOGGING, INC.

TEMPERATURE SURVEY

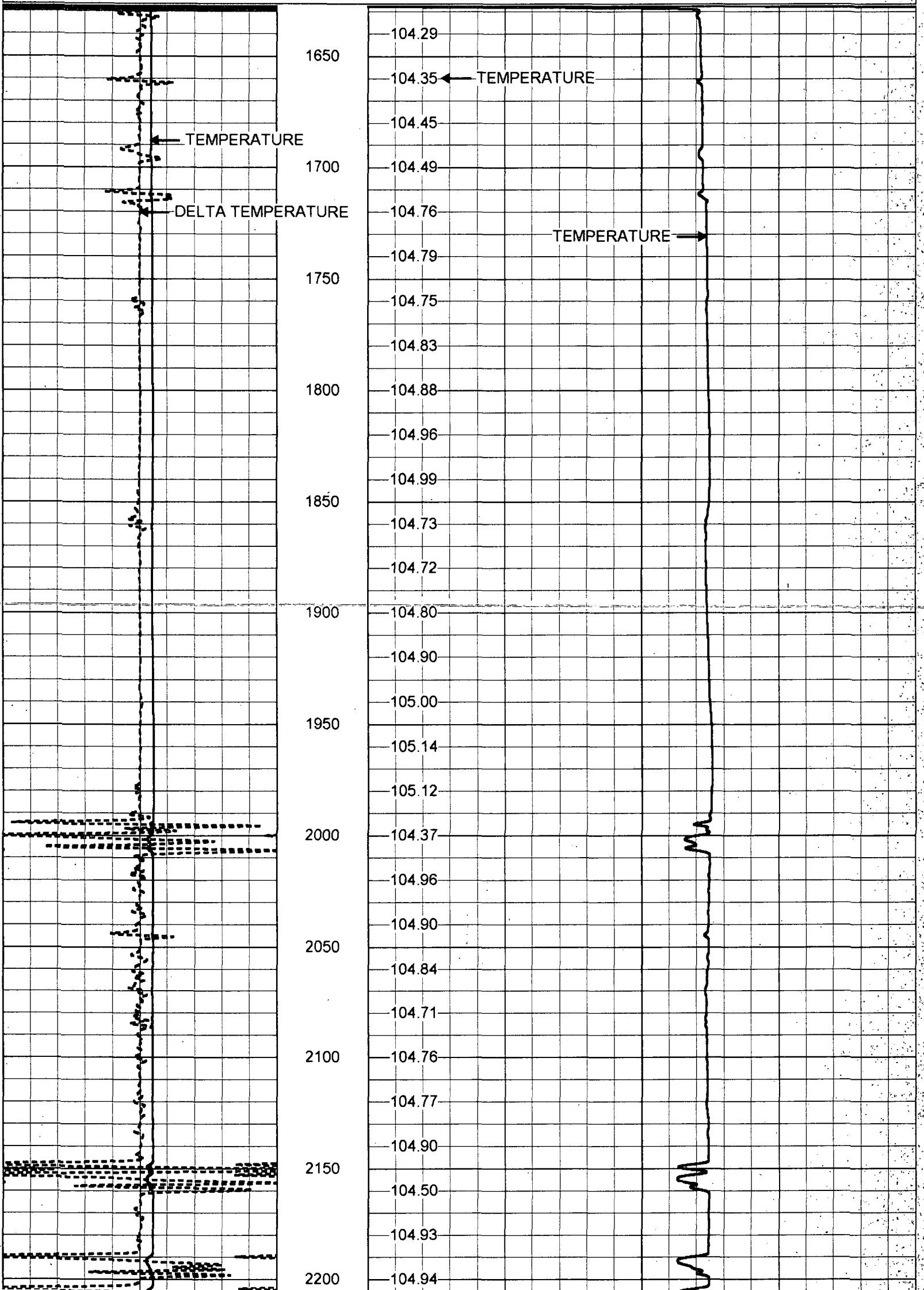
50 TEMPERATURE (degF) 150

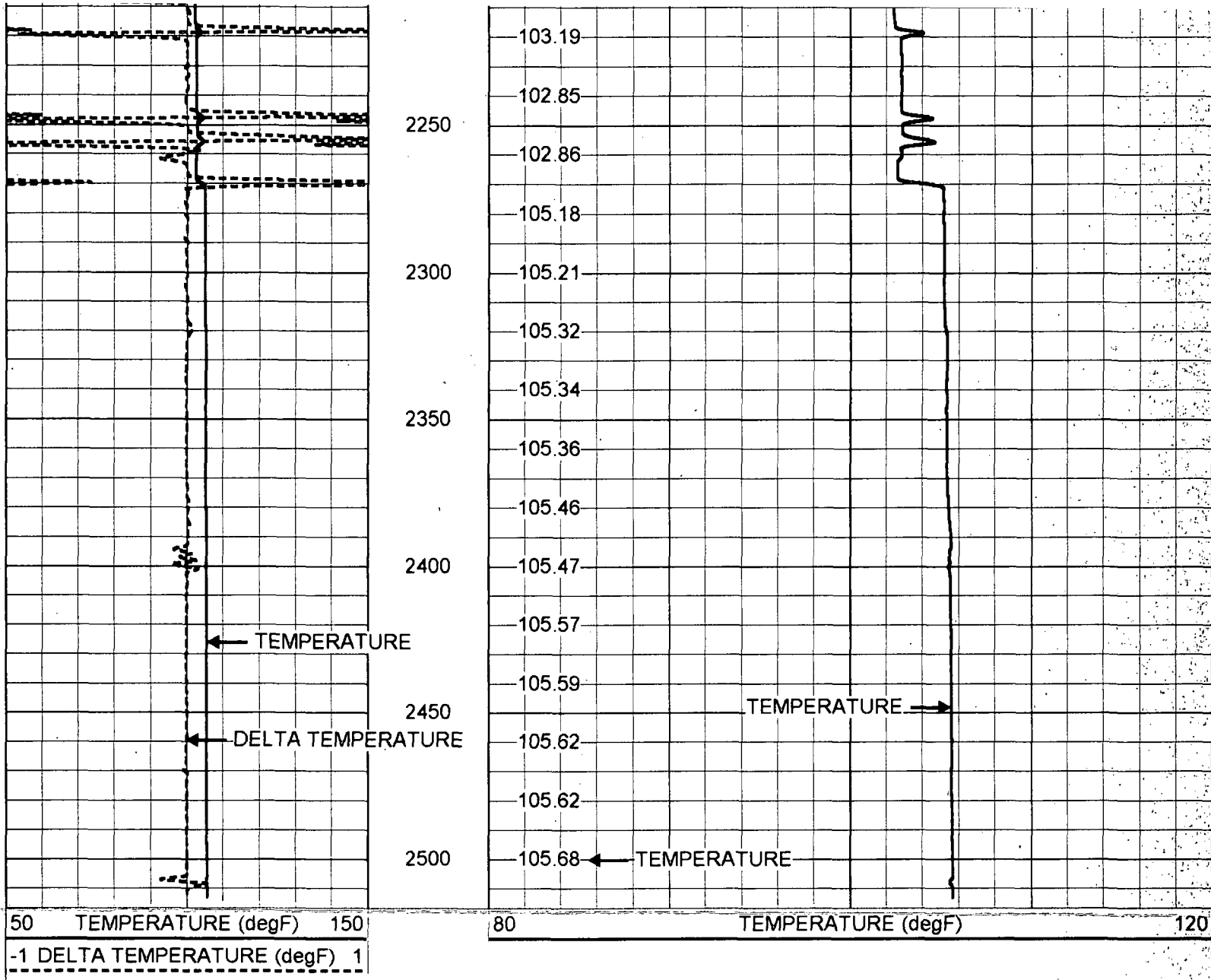
80

TEMPERATURE (degF)

120

-1 DELTA TEMPERATURE (degF) 1

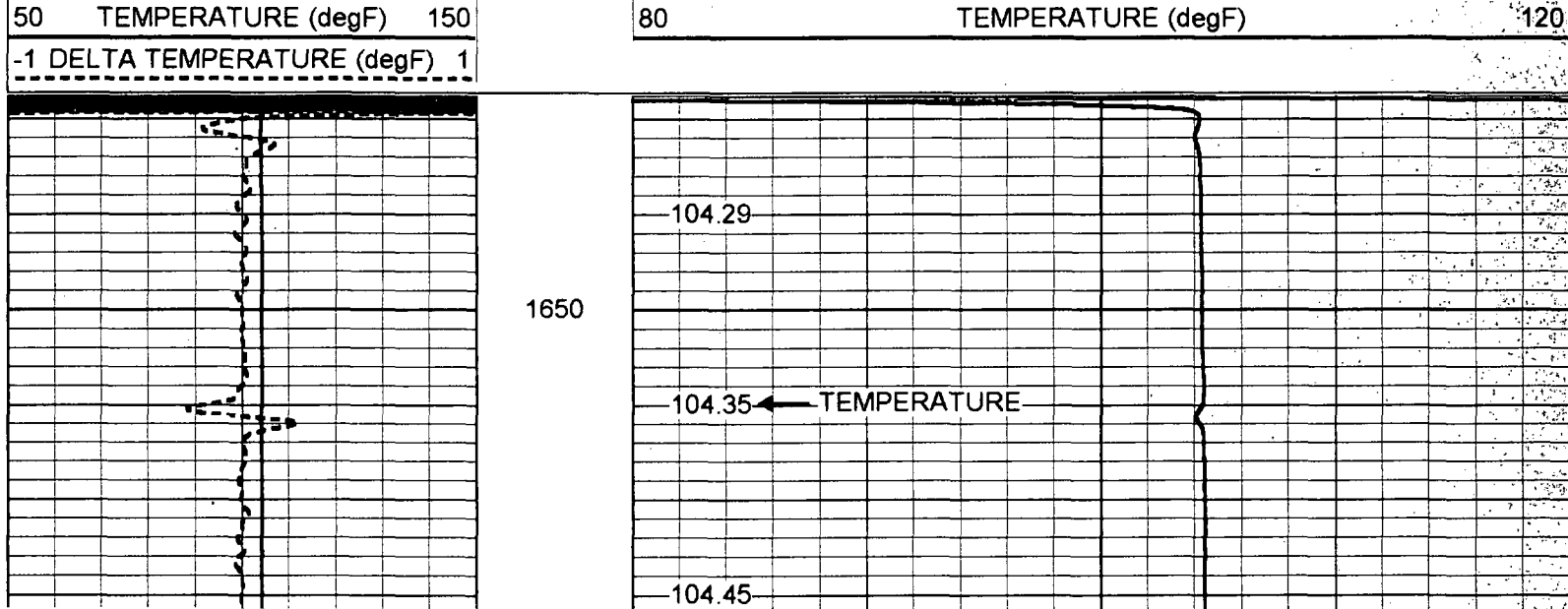


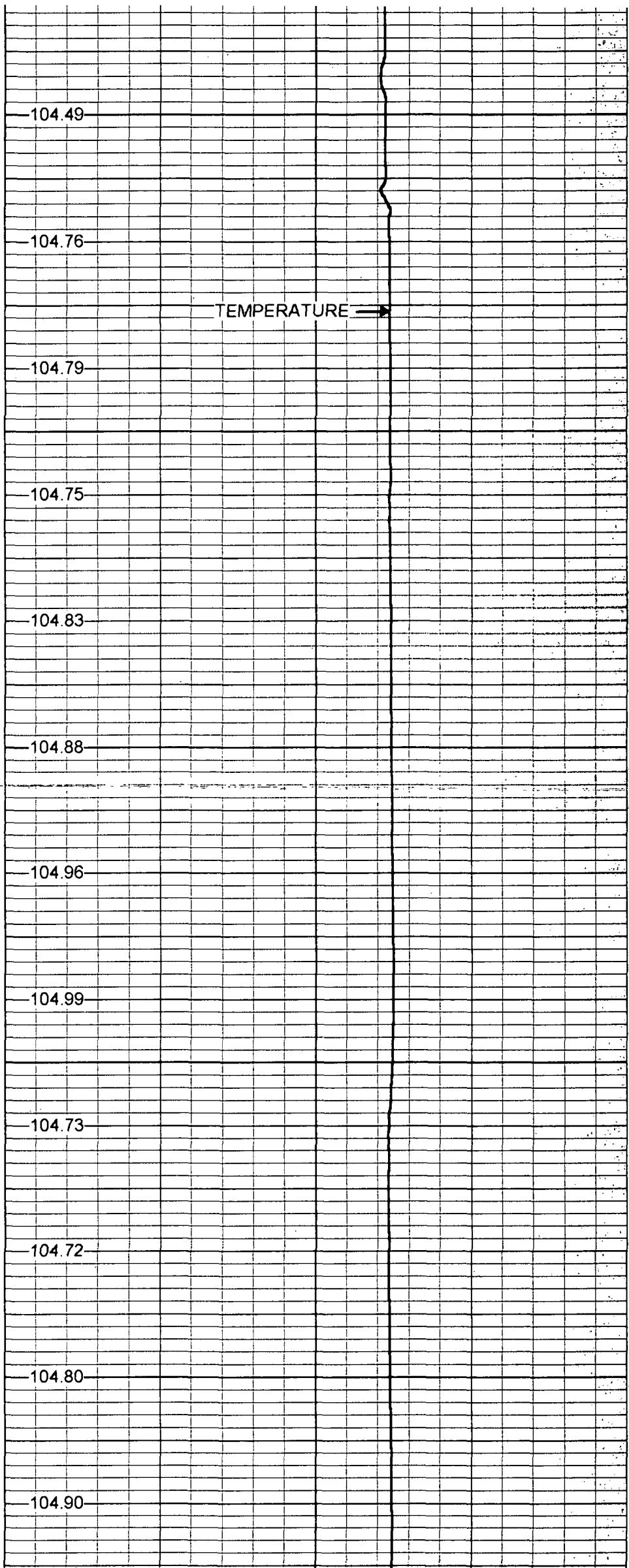
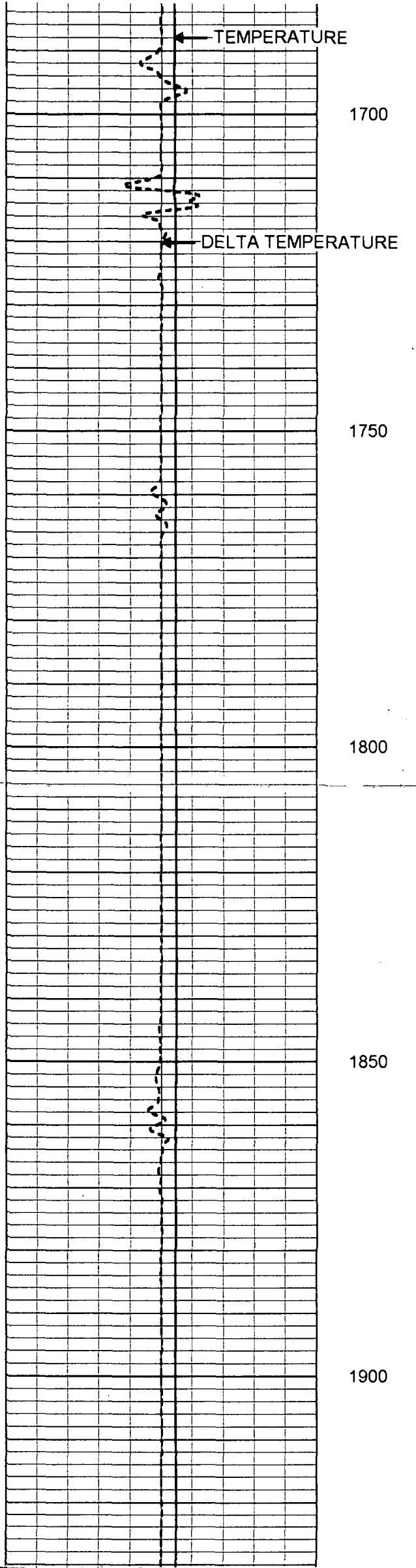


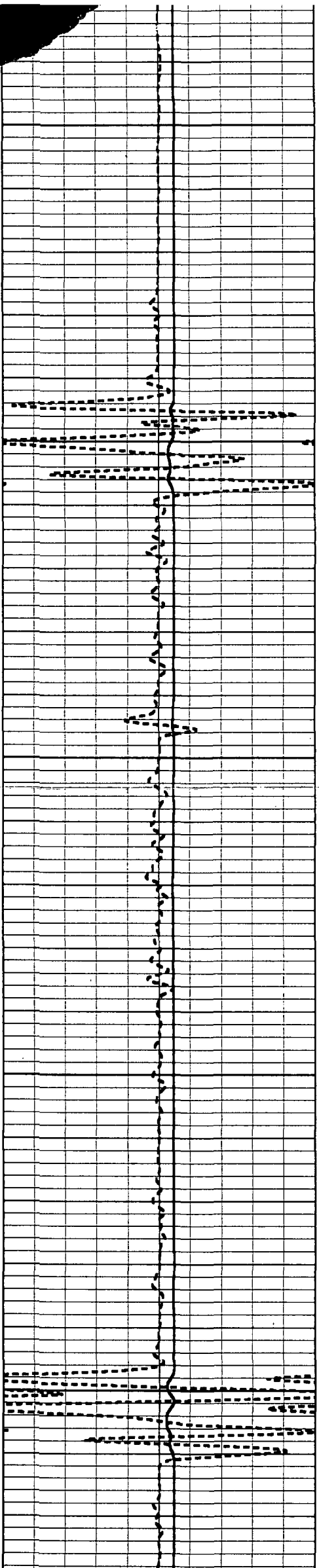
FLORIDA
GEOPHYSICAL LOGGING, INC.

TEMPERATURE SURVEY

Database File: puntaiw1.db
 Dataset Pathname: run9/pass2
 Presentation Format: temp.prs
 Dataset Creation: Wed Oct 04 10:16:12 2000 by Log VER_5.4
 Charted by: Depth in Feet scaled 1:240







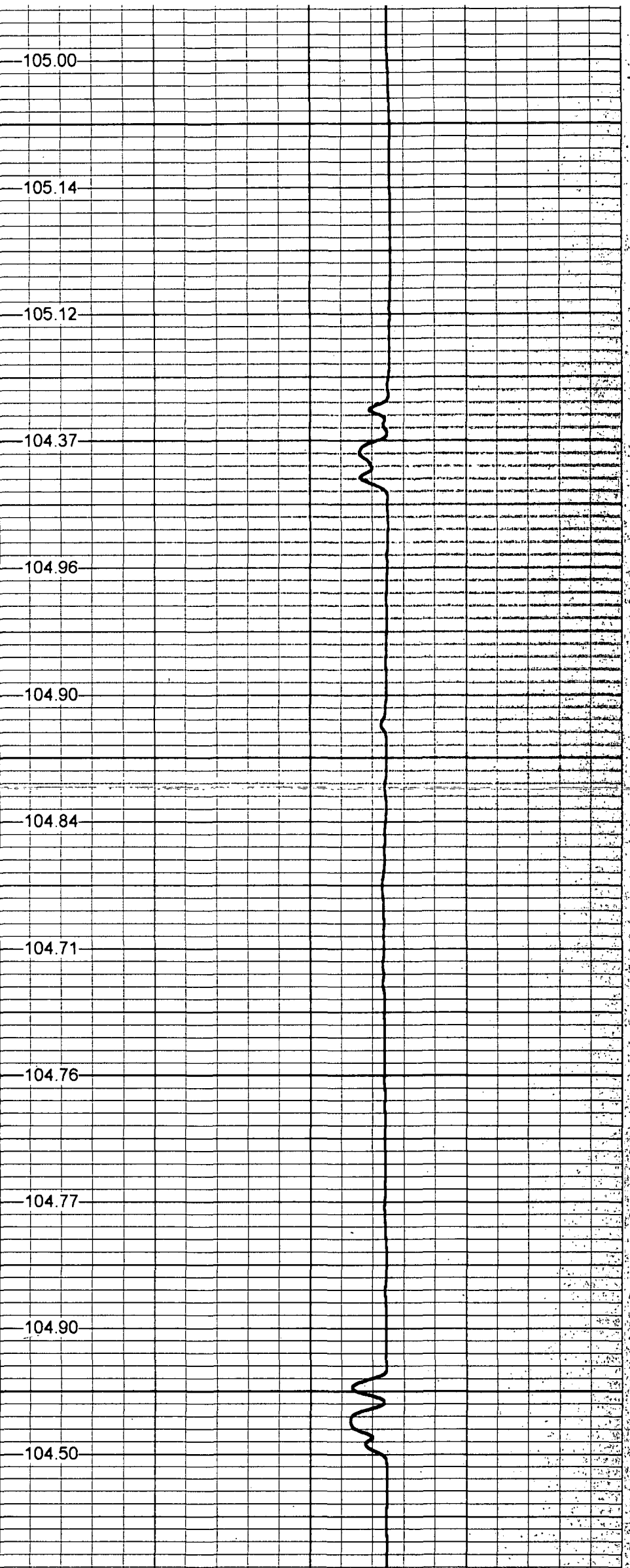
1950

2000

2050

2100

2150



105.00

105.14

105.12

104.37

104.96

104.90

104.84

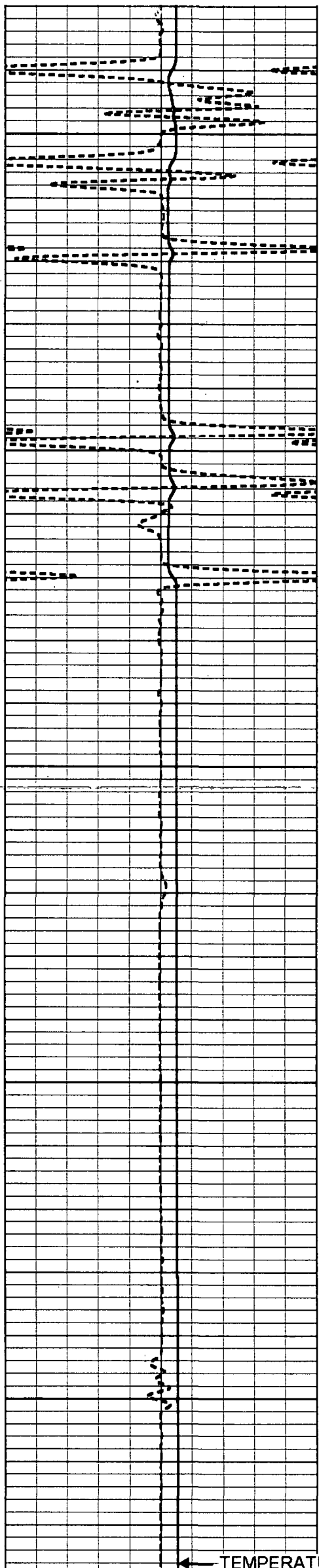
104.71

104.76

104.77

104.90

104.50



2200

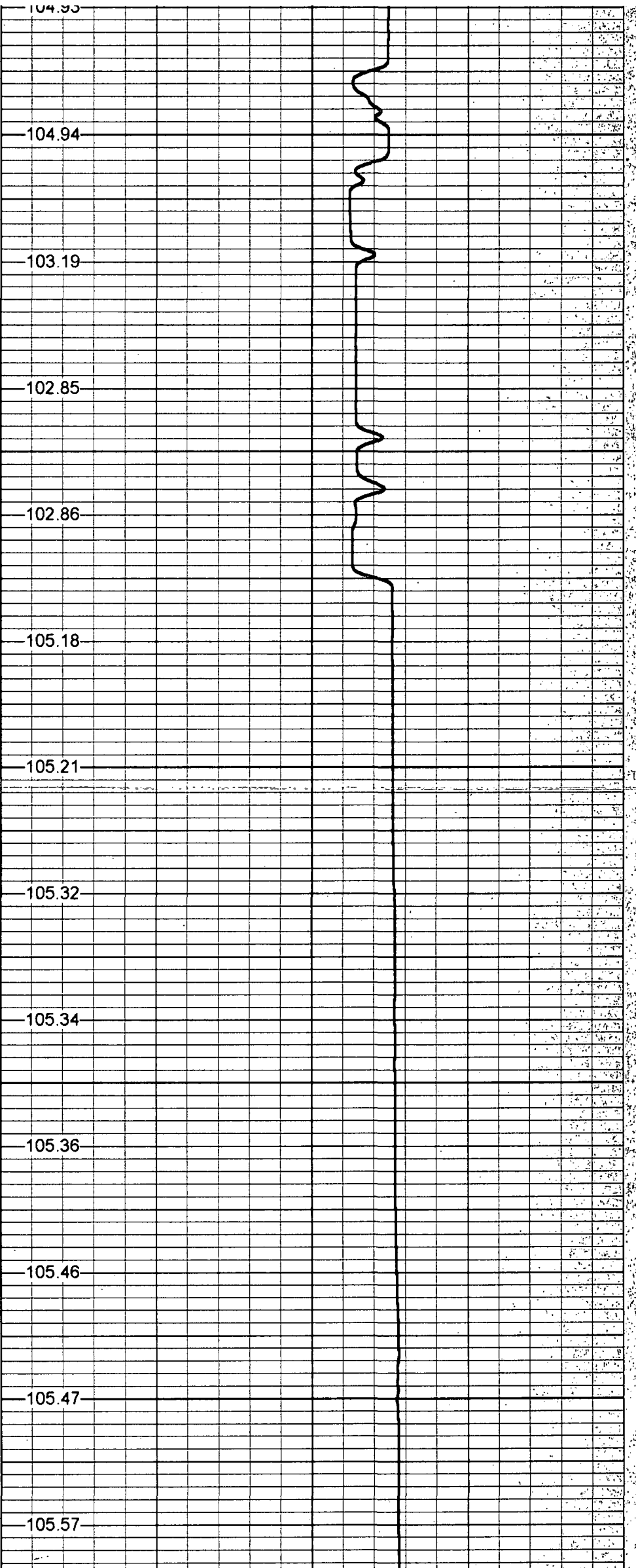
2250

2300

2350

2400

← TEMPERATURE



104.93

104.94

103.19

102.85

102.86

105.18

105.21

105.32

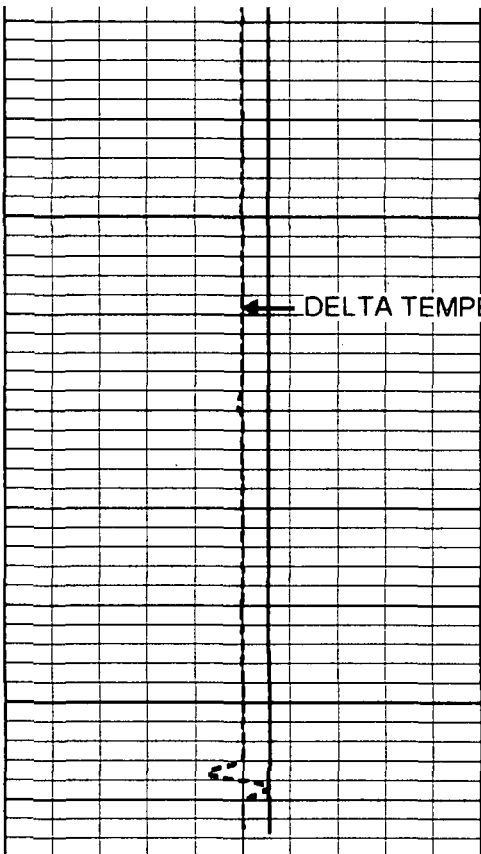
105.34

105.36

105.46

105.47

105.57

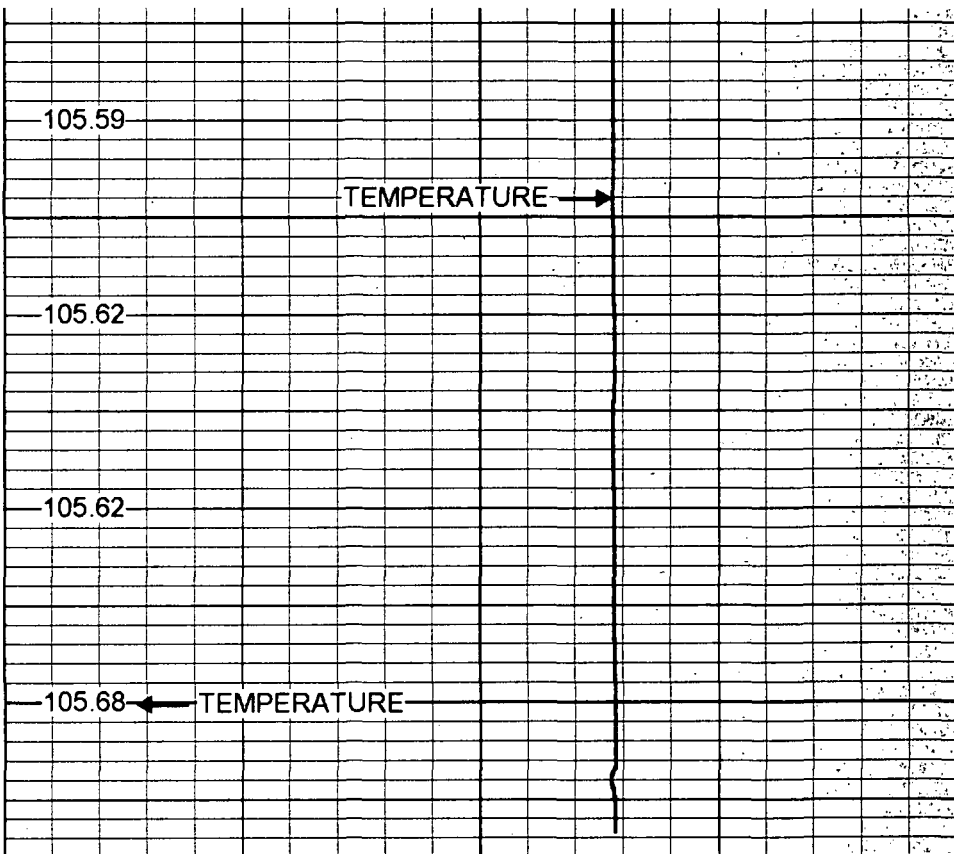


2450

DELTA TEMPERATURE

2500

50 TEMPERATURE (degF) 150
 -1 DELTA TEMPERATURE (degF) 1



105.59

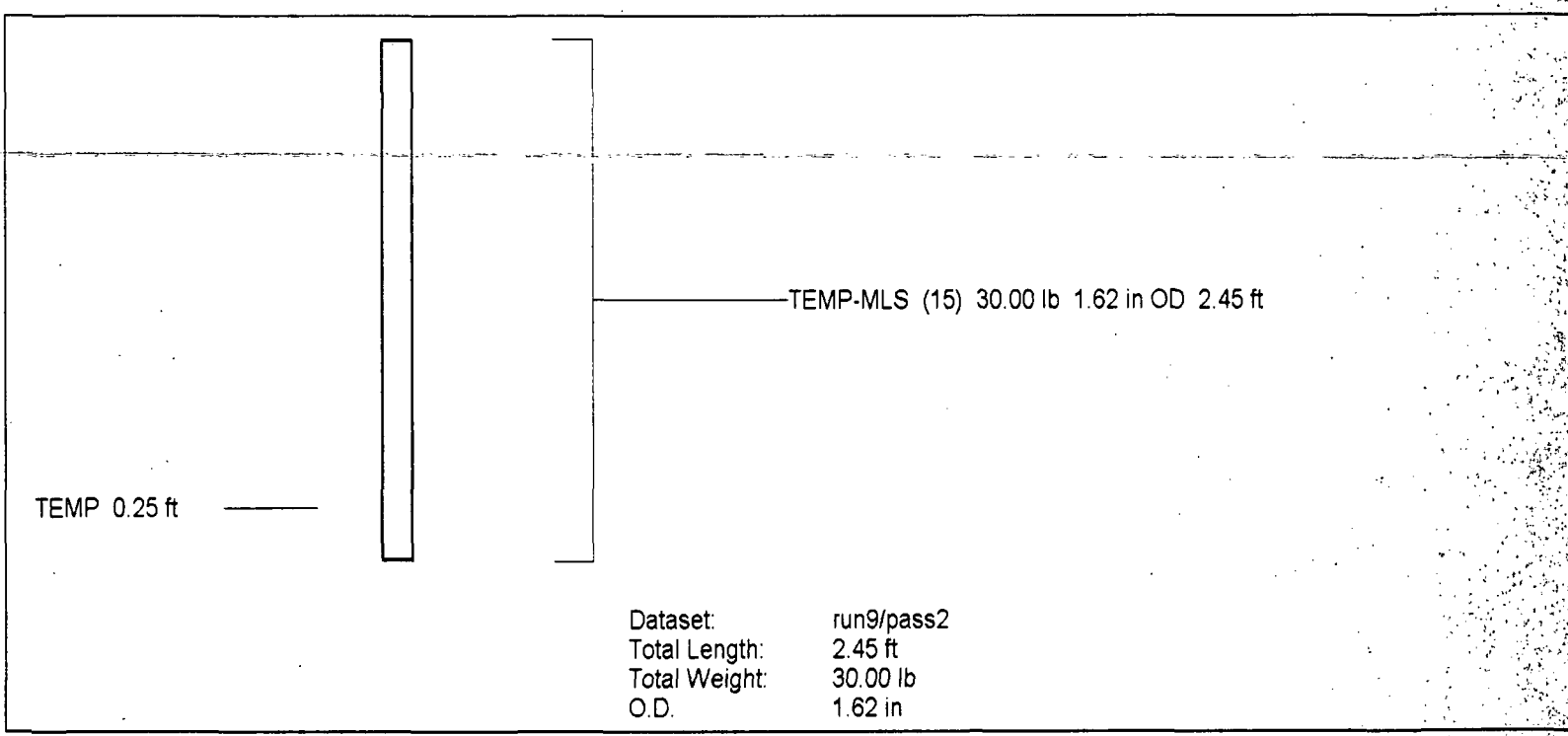
TEMPERATURE

105.62

105.62

105.68 TEMPERATURE

80 TEMPERATURE (degF) 120



Dataset: run9/pass2
 Total Length: 2.45 ft
 Total Weight: 30.00 lb
 O.D.: 1.62 in

Temperature Calibration Report

Serial Number: 15
 Tool Model: MLS
 Performed: Wed Aug 30 10:29:15 2000

Point #	Reading		Reference	
1	289.494	cps	33	degF
2	453.262	cps	76	degF
3	723.262	cps	161	degF