



TEMPERATURE LOG

Well: EW - 1
 Field: PUNTA GORDA
 Country: CHARLOTTE
 State/P/v: FL

Company: WATER RESOURCE SOLUTIONS INC.
 Well: EW - 1
 Field: PUNTA GORDA EXP. WELL
 Country: CHARLOTTE
 State/P/v: FLORIDA

Location: NW 1/4, NE 1/4 : S7, T41S, R24E

Other Services: FLOW

Permanent Datum: PAD
 Elevation: 24'
 Log Measured From: PAD
 Drilling Measured From: PAD

Elevation: K.B. 32', D.F. 32', G.L. 24'

Number: 47700
 SEVEN
 3350'
 3355'
 3200'
 2250'
 12.25"
 WATER
 NA
 100 DEGF
 NA
 0800
 1330
 103
 FT. MYERS
 DENISON
 N. KUGLER

Fluid: WATER
 Viscosity: NA
 Recorded Temp: NA
 Cement Top: NA
 Well Ready: 0800
 Logger on Bottom: 1330
 Cement Number: 103
 Logged By: FT. MYERS
 Checked By: DENISON
 Logged By: N. KUGLER

Borehole Record	Bit Size	From	To	Size	Tubing Record	
					Weight	From
ONE	36"	SURFACE	70'			
TWO	28.5"	CASING	842'			
FOUR	18.5"	CASING	1660'			
FIVE	12.25"	CASING	3350'			
Log Record	Size	Wgt/Ft	Top	Bottom		
ce String	30"	500	SURFACE	66'		
String	20"	375	SURFACE	833'		
ction String	14"	375	SURFACE	1650'		

<<< Fold Here >>>

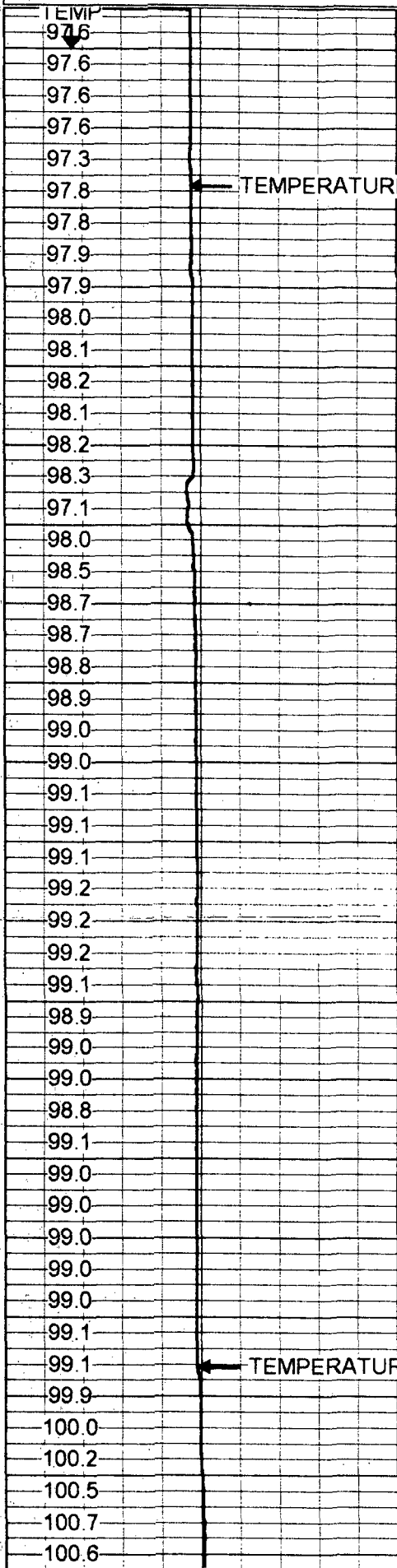
All interpretations are opinions based on inferences from electrical or other measurements and we cannot and do not guarantee the accuracy or correctness of any interpretation, and we shall not, except in the case of gross or willful negligence on our part, be liable or responsible for any loss, costs, damages, or expenses incurred or sustained by anyone resulting from any interpretation made by any of our officers, agents or employees. These interpretations are also subject to our general terms and conditions set out in our current Price Schedule.

Comments

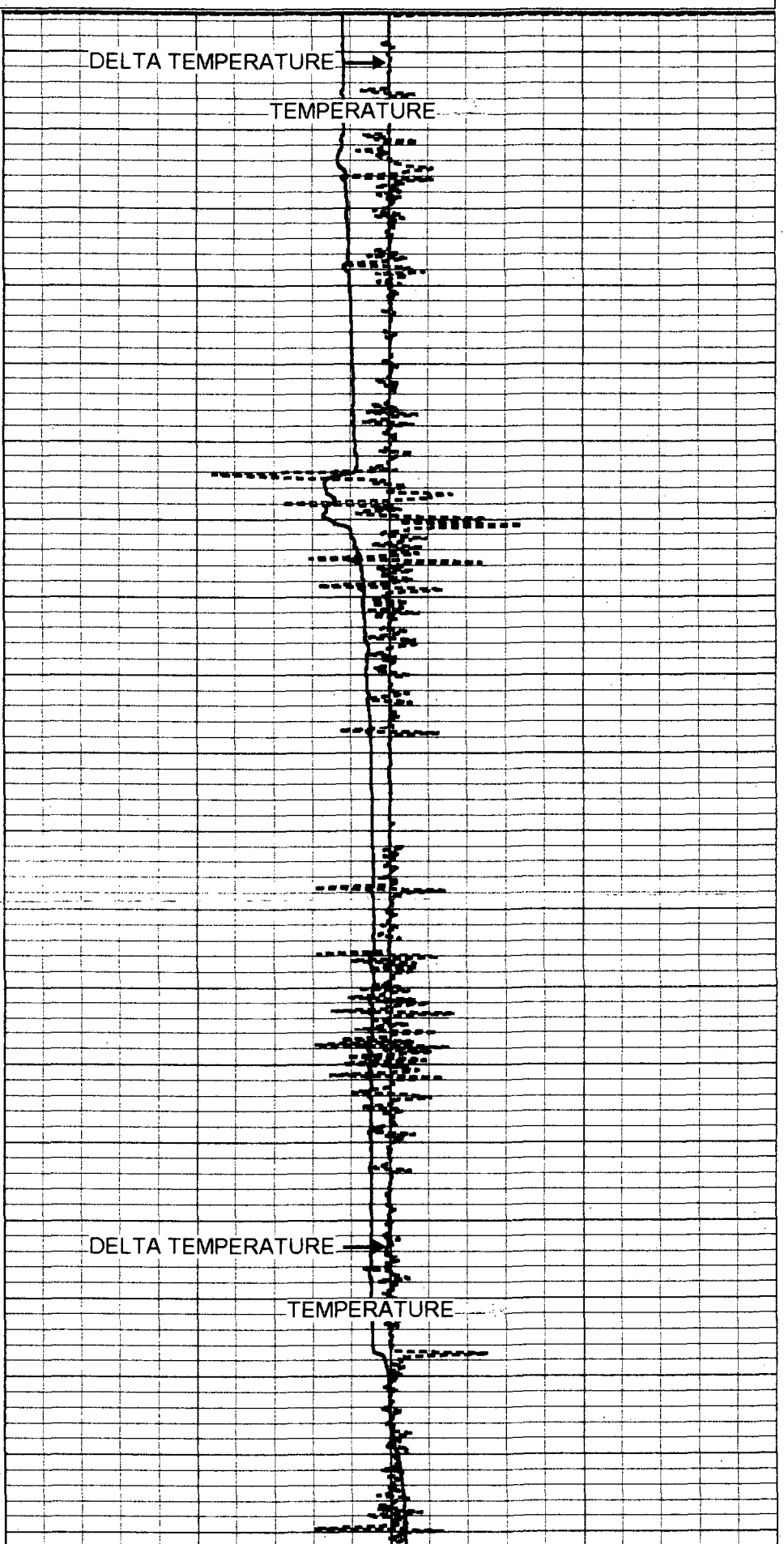


TEMPERATURE

Database File: puntaew1.db
 Dataset Pathname: 7/pass13
 Presentation Format: temp.prs
 Dataset Creation: Fri Apr 07 13:17:33 2000 by Log VER_5.4
 Charted by: Depth in Feet scaled 1:1200



2250
2300
2350
2400
2450
2500
2550
2600
2650
2700
2750
2800
2850
2900
2950
3000
3050
3100
3150
3200

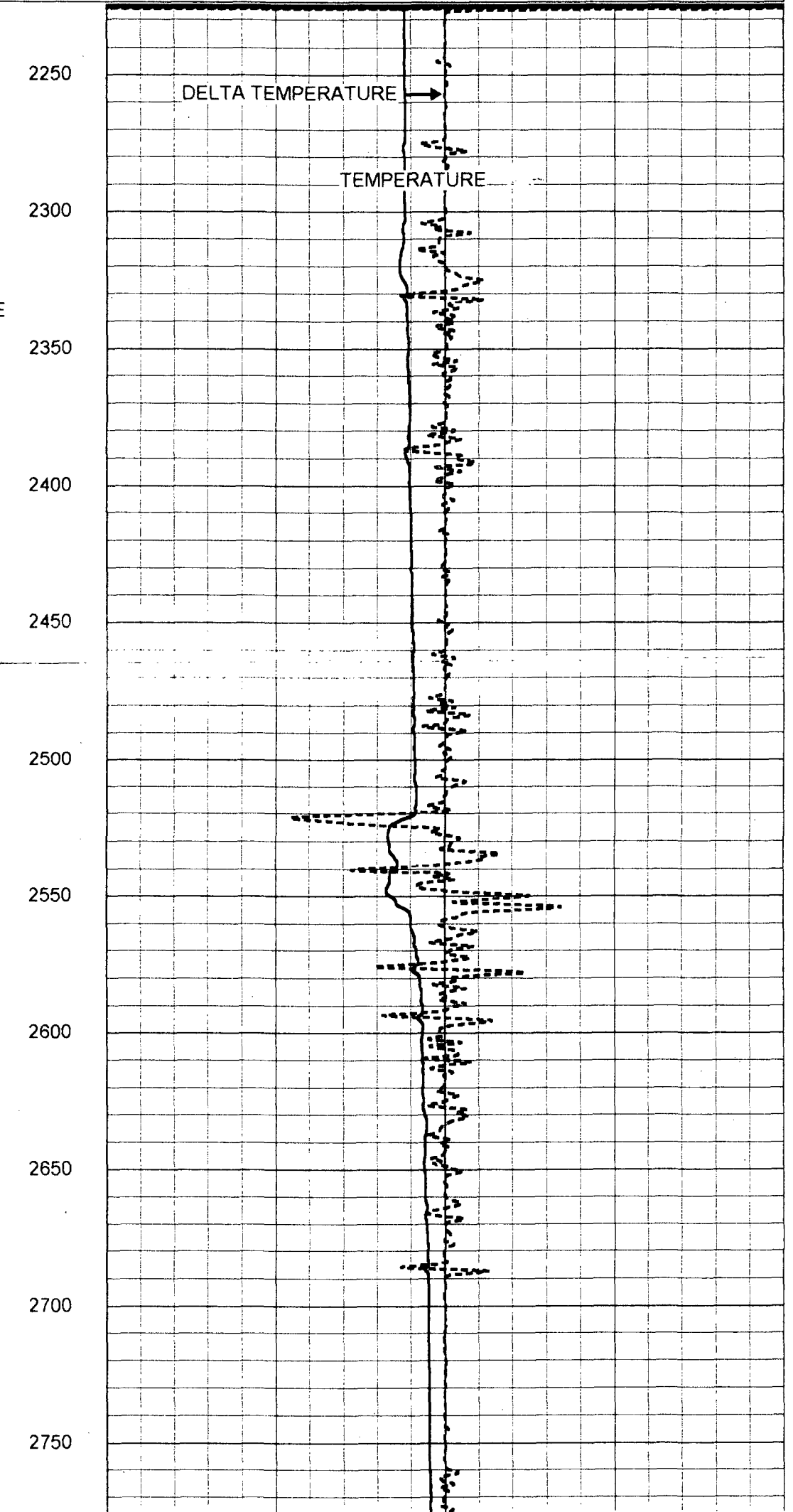
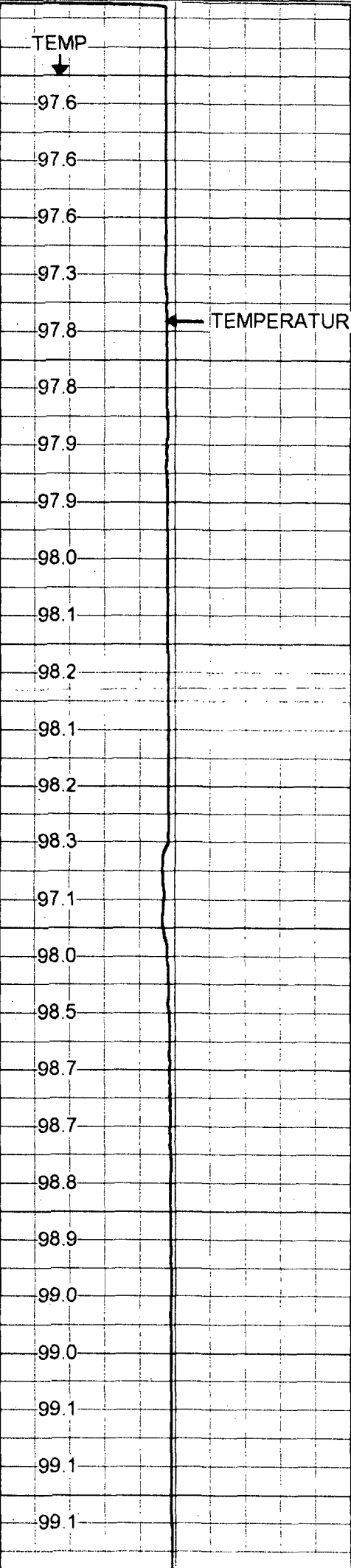


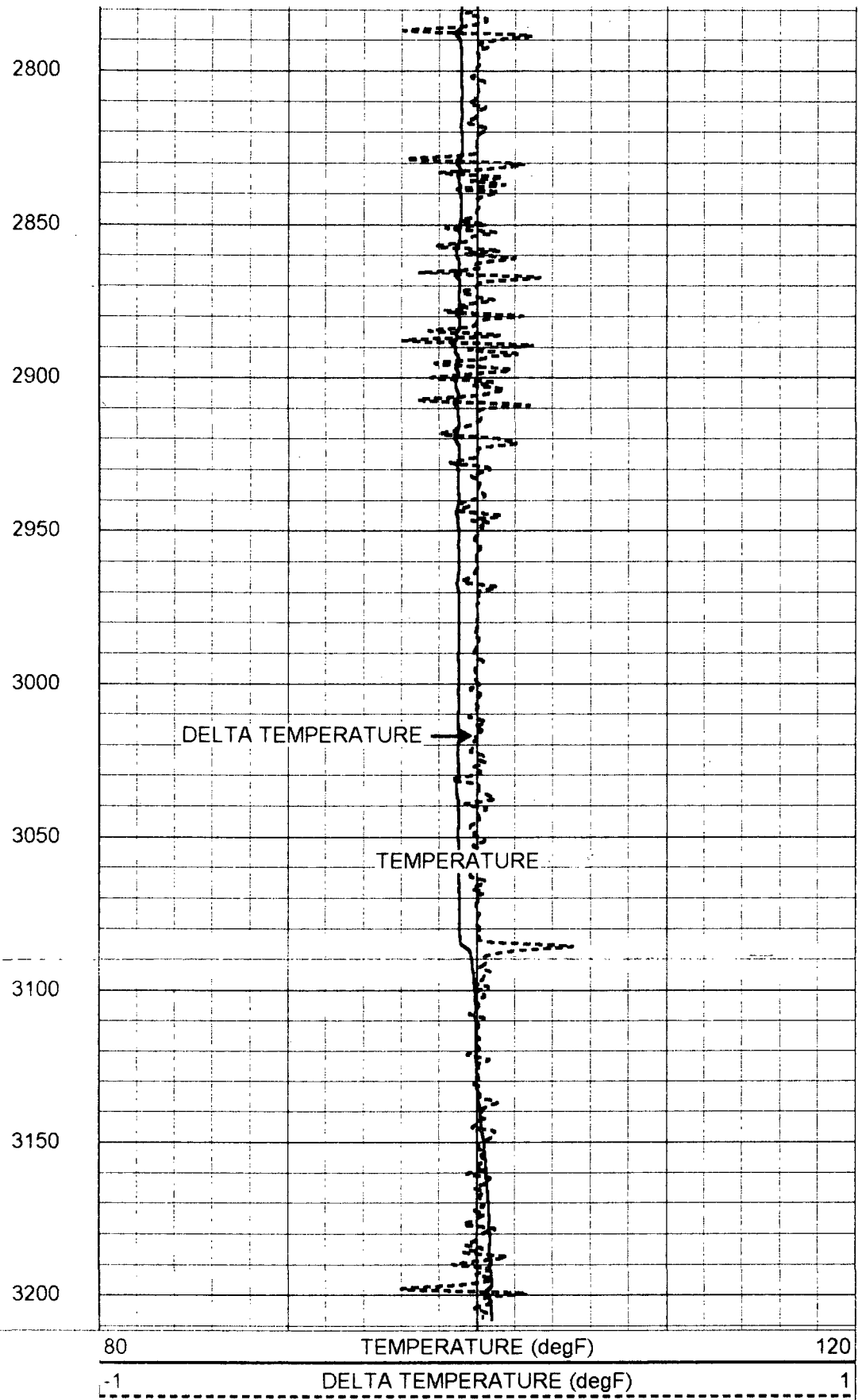
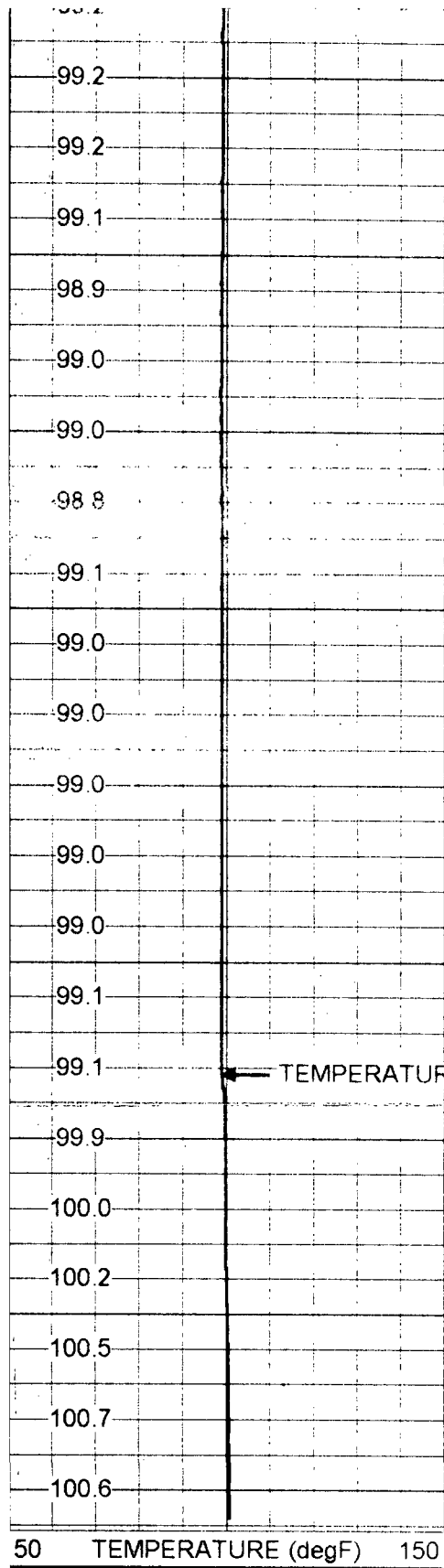
Database File: puntaew1.db
Dataset Pathname: 7/pass13
Presentation Format: temp.prs
Dataset Creation: Fri Apr 07 13:17:33 2000 by Log VER_5.4
Charted by: Depth in Feet scaled 1:600

50 TEMPERATURE (degF) 150

80 TEMPERATURE (degF) 120

-1 DELTA TEMPERATURE (degF) 1





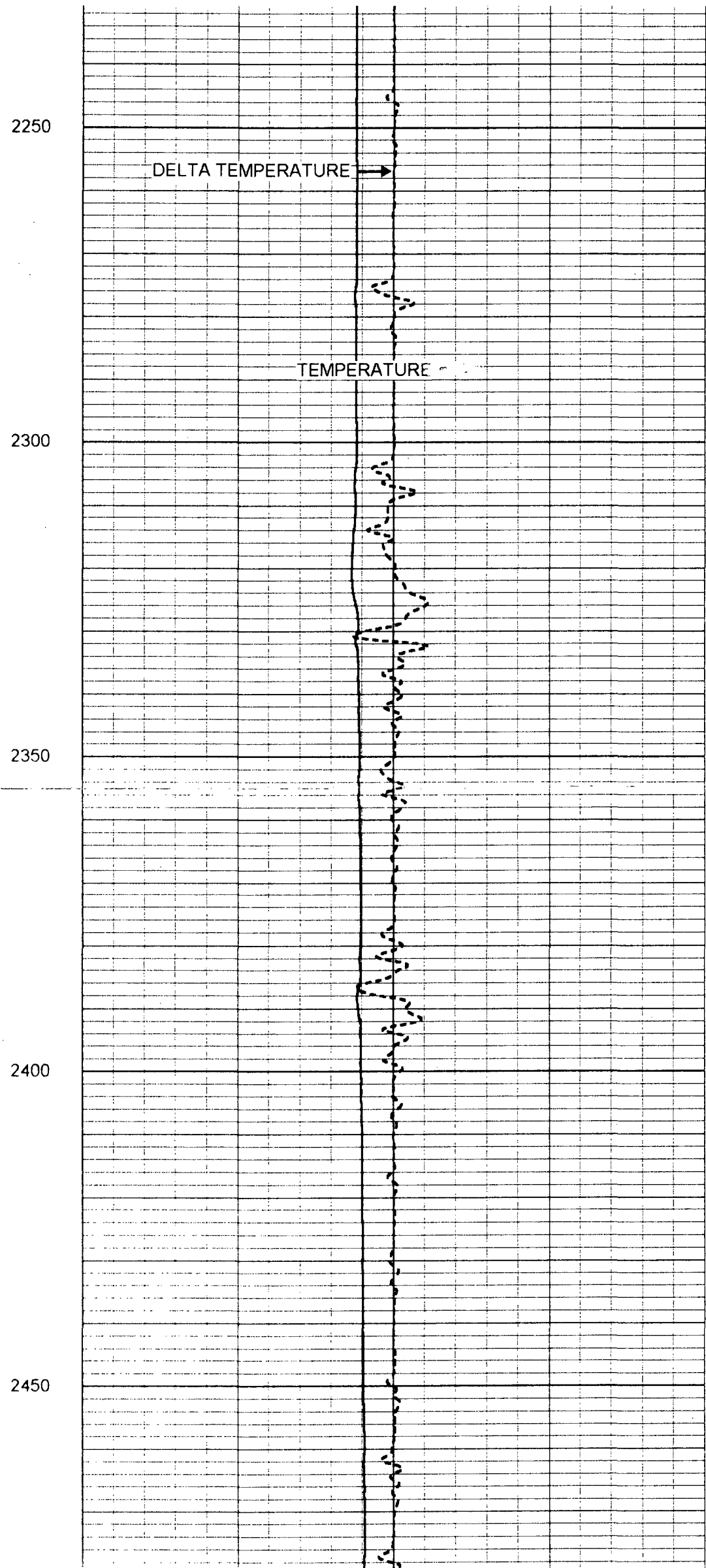
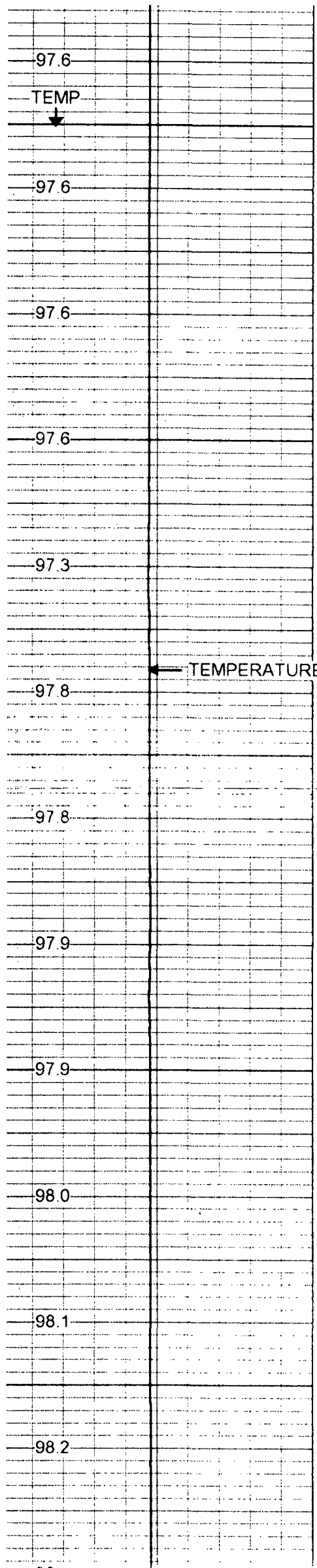
TEMPERATURE

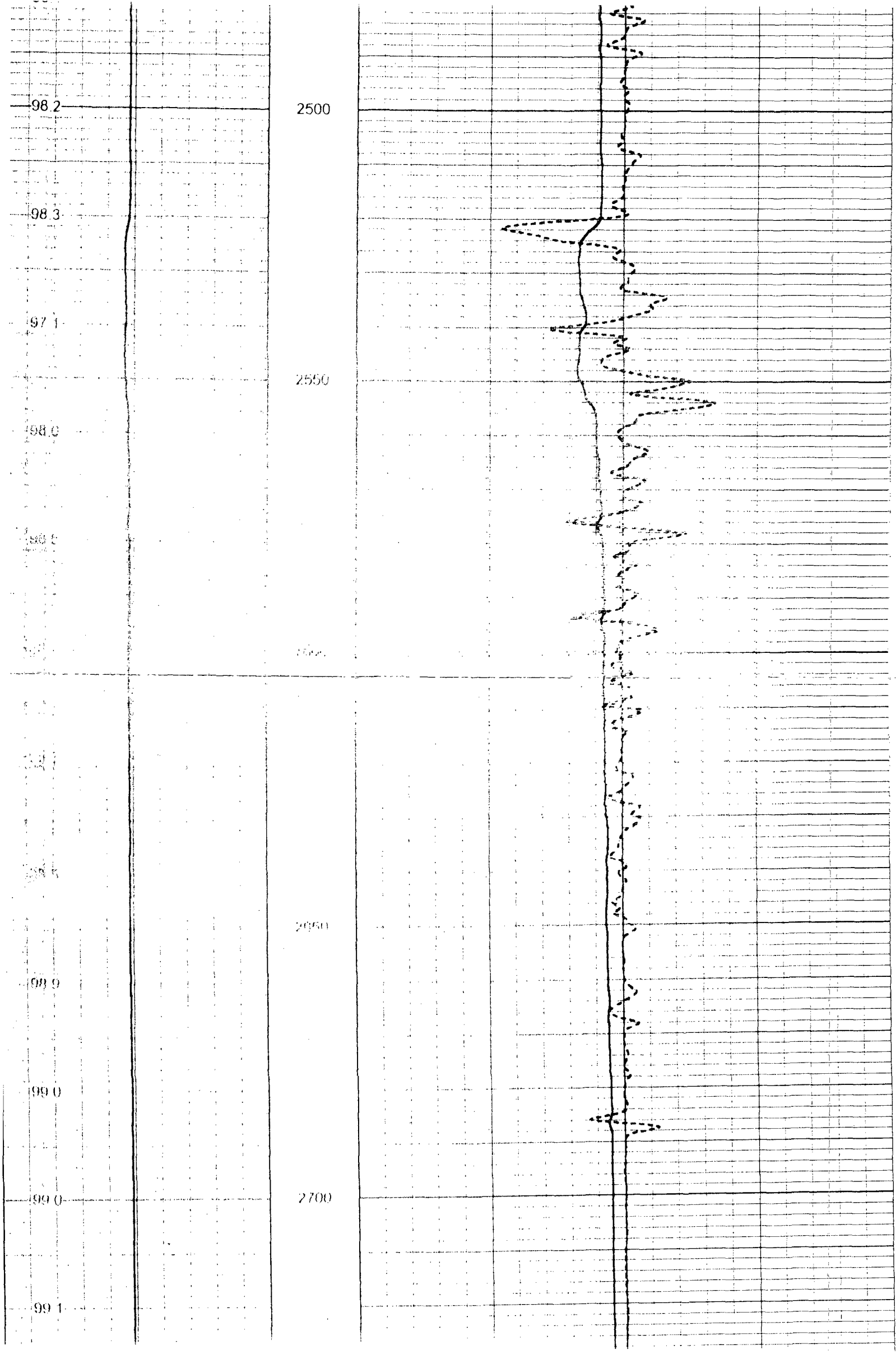
Database File: puntaew1.db
 Dataset Pathname: 7/pass13
 Presentation Format: temp.prs
 Dataset Creation: Fri Apr 07 13:17:33 2000 by Log VER_5.4
 Charted by: Depth in Feet scaled 1:240

50 TEMPERATURE (degF) 150

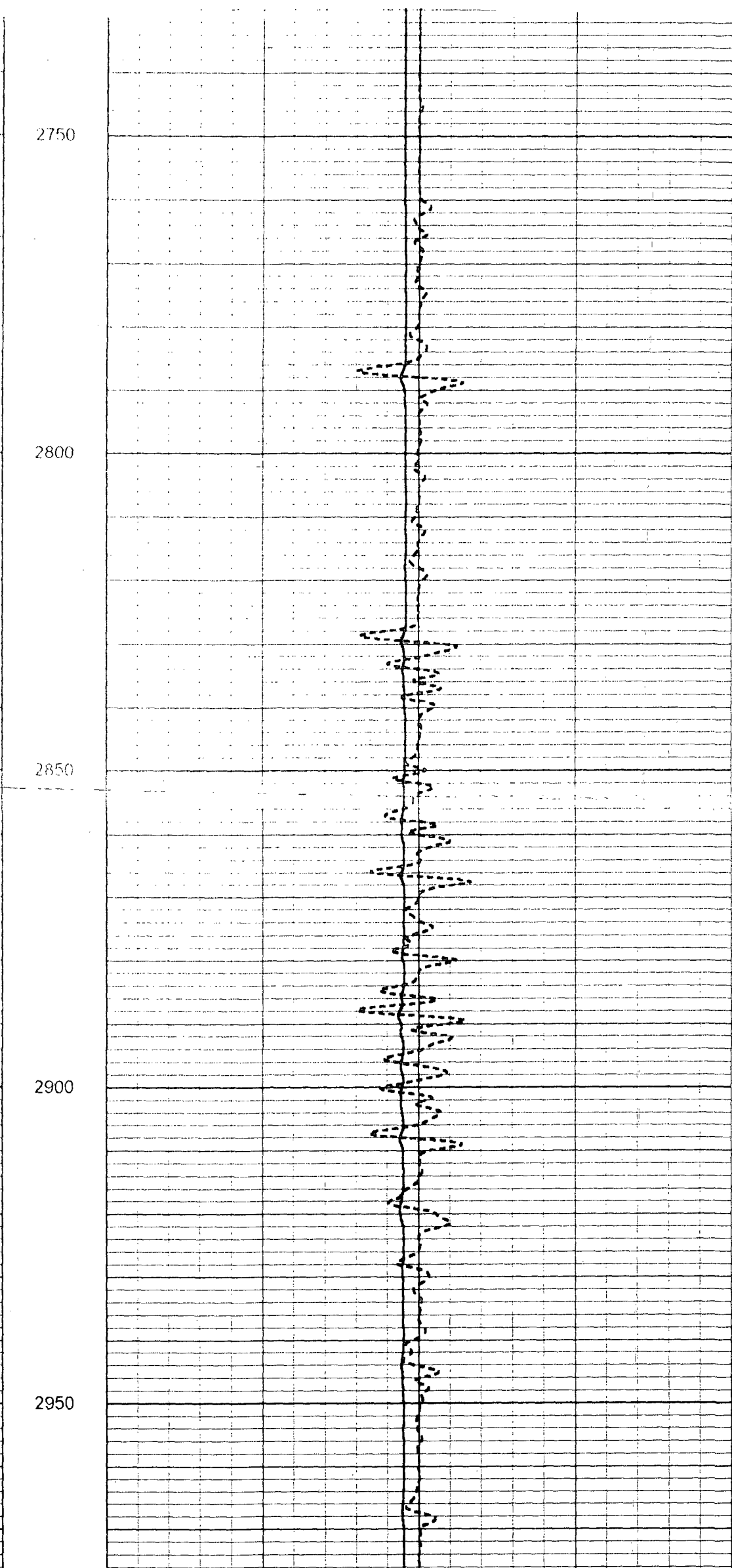
80 TEMPERATURE (degF) 120

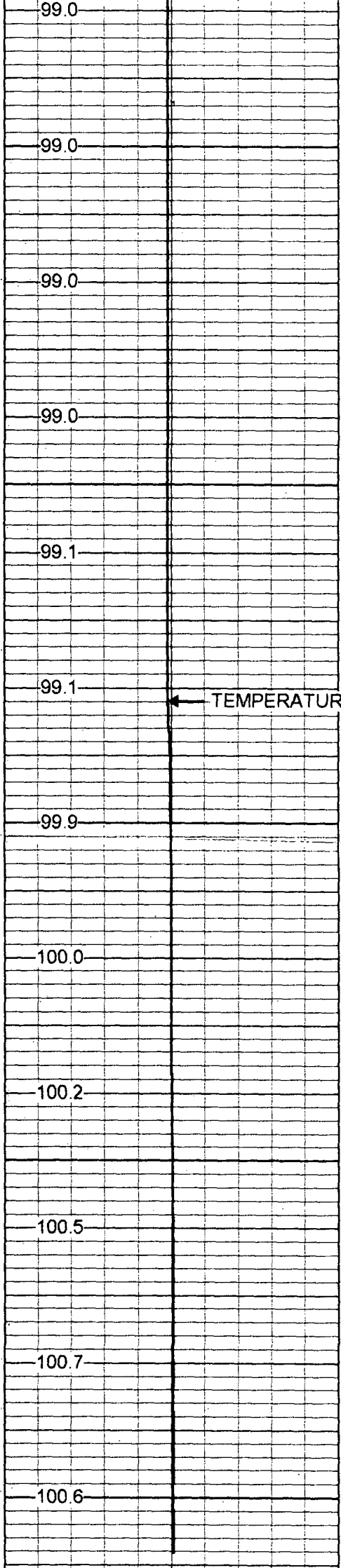
-1 DELTA TEMPERATURE (degF) 1



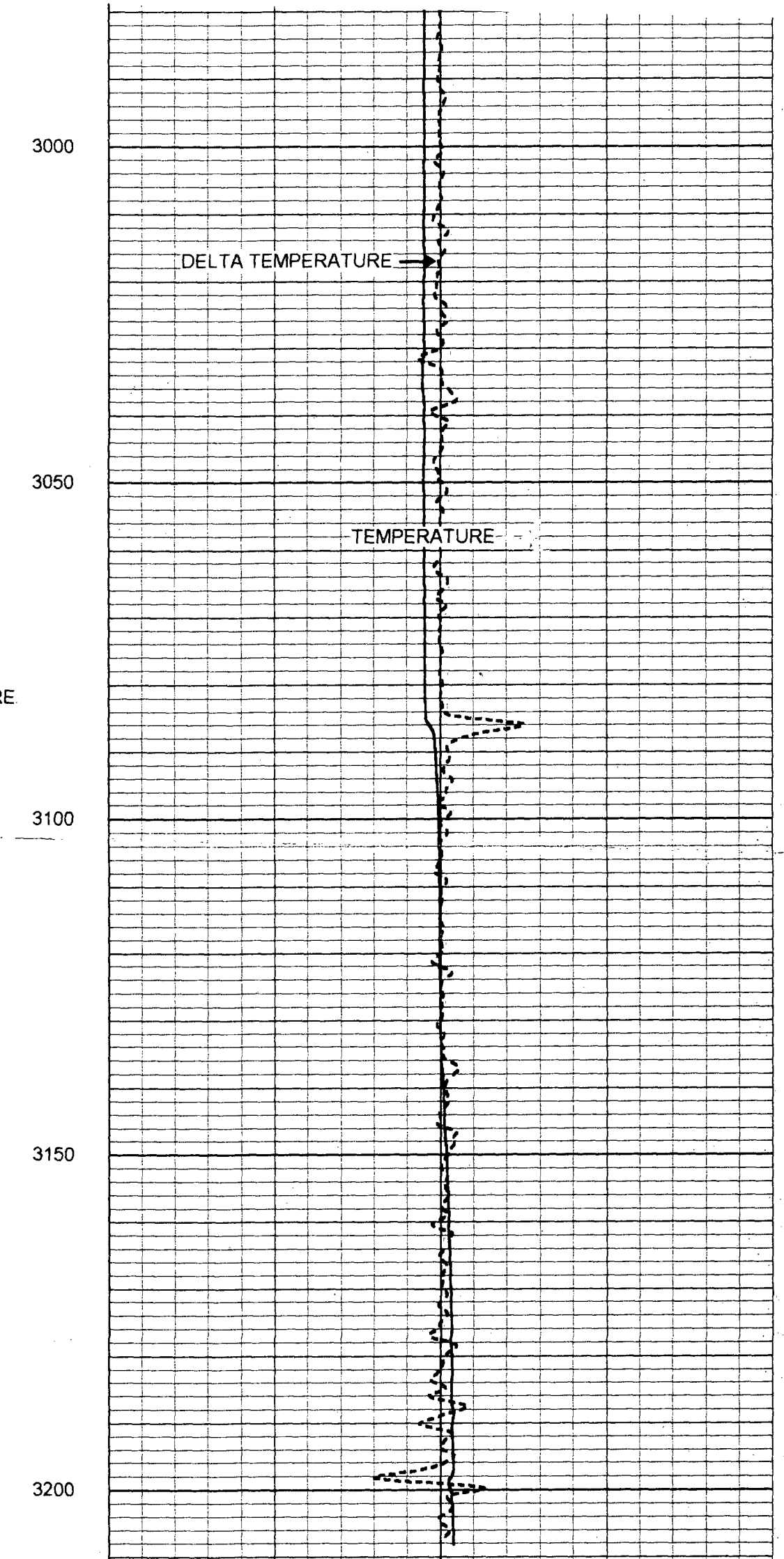


99.1
99.1
99.2
99.2
99.1
98.9
99.0
99.0
98.8
99.1
99.0

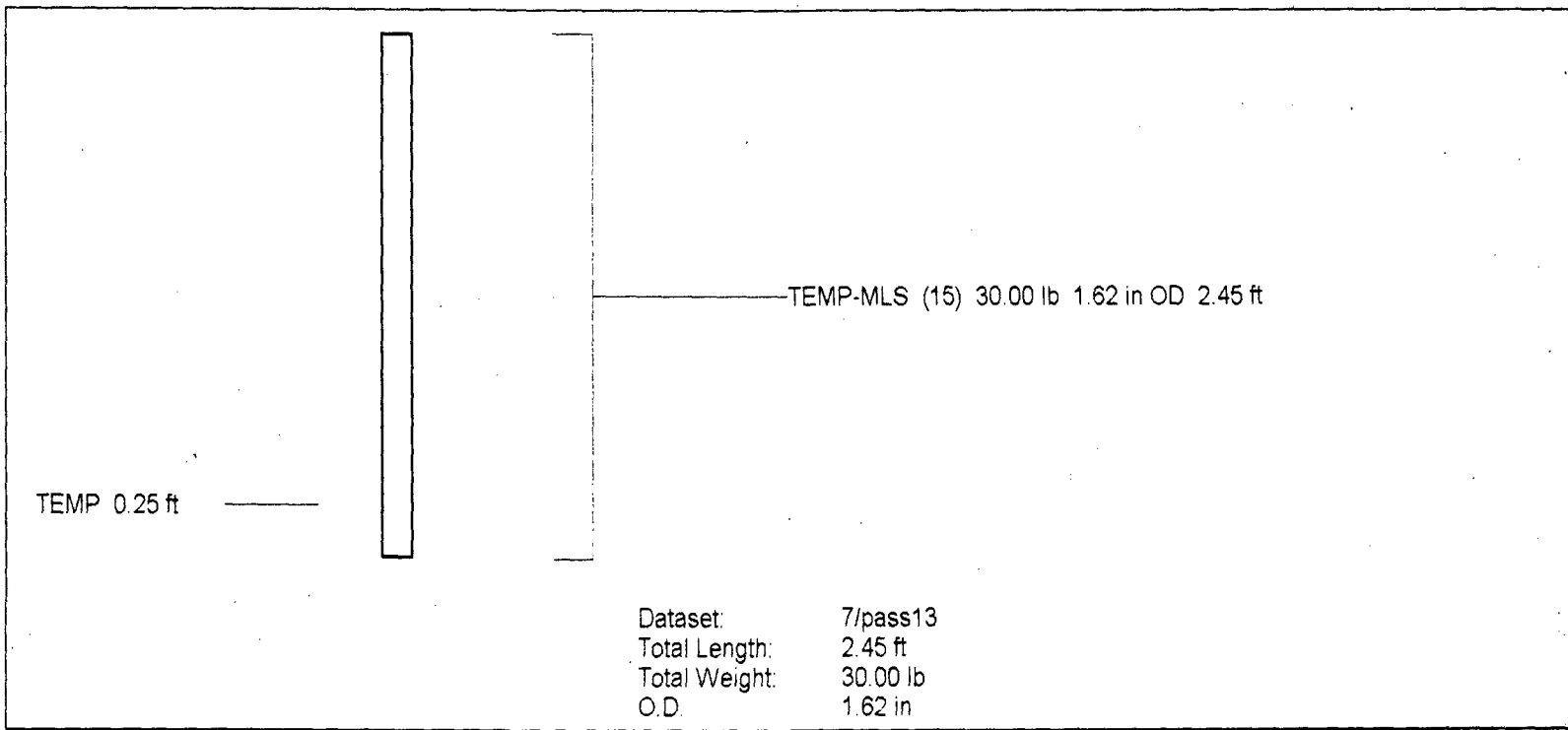




50 TEMPERATURE (degF) 150



80 TEMPERATURE (degF) 120
 -1 DELTA TEMPERATURE (degF) 1



Temperature Calibration Report					
		Serial Number:	15		
		Tool Model:	MLS		
		Performed:	Wed Sep 01 16:14:49 1999		
Point #	Reading		Reference		
1	300.098	cps	34		degF
2	519.414	cps	95		degF
3	677.215	cps	122.5		degF