



**YOUNGQUIST  
BROTHERS, Inc**

GEOPHYSICAL LOGGING DIVISION

**FLUID CONDUCTIVITY  
TEMPERATURE**

**RECEIVED**

APR 30 2004

Company MWH  
Well DZMW #1  
Field NORTH LEE COUNTY  
County LEE  
State FLORIDA

Company MWH  
Well DZMW #1  
Field NORTH LEE COUNTY  
County LEE  
State FLORIDA

Location  
Permanent Datum PAD  
Log Measured From PAD  
Drilling Measured From PAD  
Elevation 3.75'  
Other Services  
SEE REMARKS  
Elevation  
K.B.  
D.F.  
G.L.

Date OCT. 18, 2003  
Run Number TWO  
Depth Driller 1500'  
Depth Logger 1498'  
Bottom Logged Interval 1498'  
Top Log Interval CASING  
Open Hole Size 12.25"  
Type Fluid WATER  
Density / Viscosity NA  
Max. Recorded Temp. NA  
Estimated Cement Top NA  
Time Well Ready 1200  
Time Logger on Bottom 1230  
Equipment Number 103  
Location FT. MYERS  
Recorded By FERGIUSON  
Witnessed By A. SIMON

Borehole Record		Tubing Record	
Run Number	Bit Size	From	To
ONE	34.5"	CASING	513'
TWO	12.25"	CASING	1500'

Casing Record  
Surface String 34"  
Prot. String 24"  
Production String  
Liner

<<< Fold Here >>>

All interpretations are opinions based on inferences from electrical or other measurements and we cannot and do not guarantee the accuracy or correctness of any interpretation, and we shall not, except in the case of gross or willful negligence on our part, be liable or responsible for any loss, costs, damages, or expenses incurred or sustained by anyone resulting from any interpretation made by any of our officers, agents or employees. These interpretations are also subject to our general terms and conditions set out in our current Price Schedule.

**Comments**

**OTHER SERVICES:**  
  
XY CALIPER - GAMMA RAY  
BOREHOLE COMPENSATED SONIC  
DUAL INDUCTION LL3/SP  
FLOWMETER  
  
DYNAMIC FLOWRATE = 500 GPM

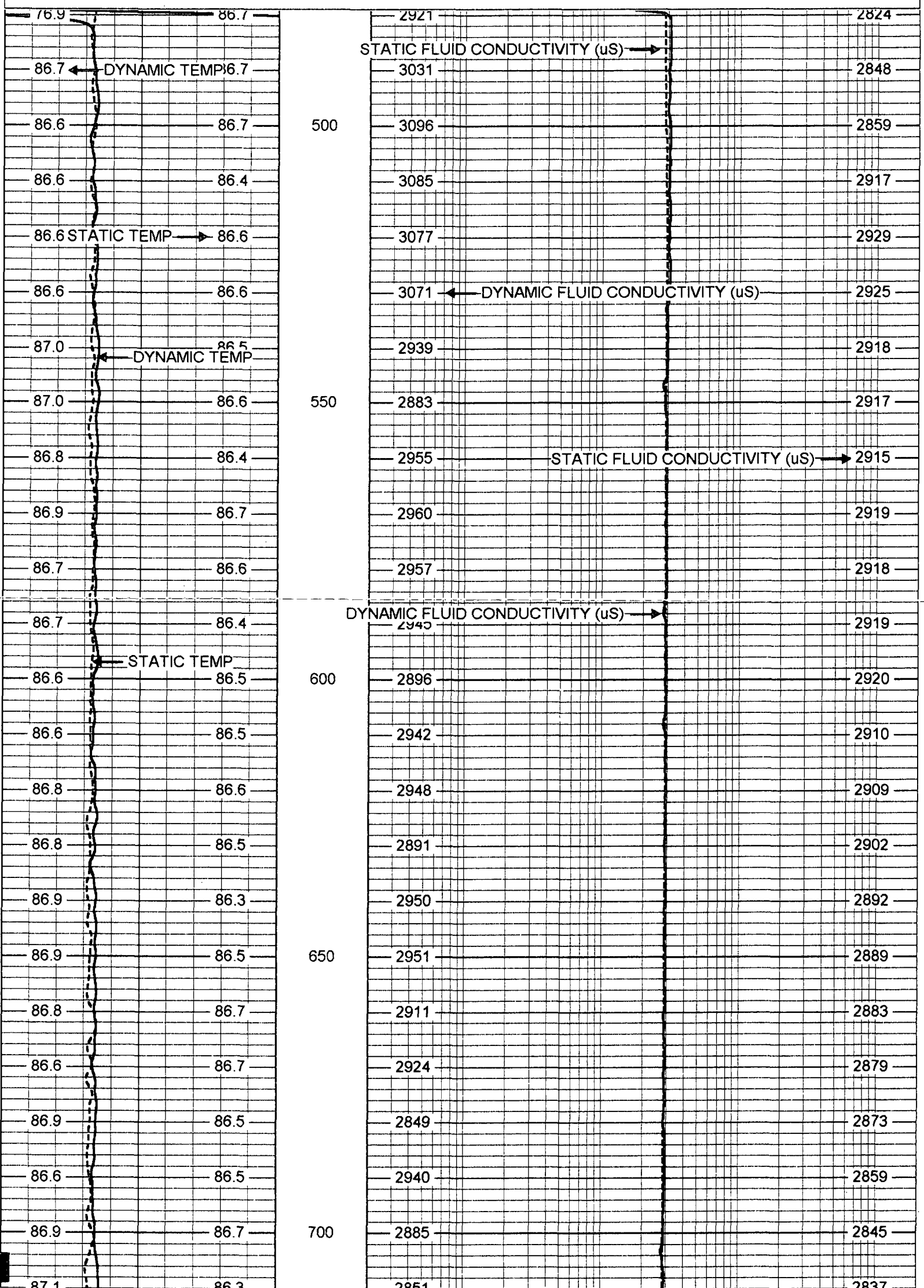


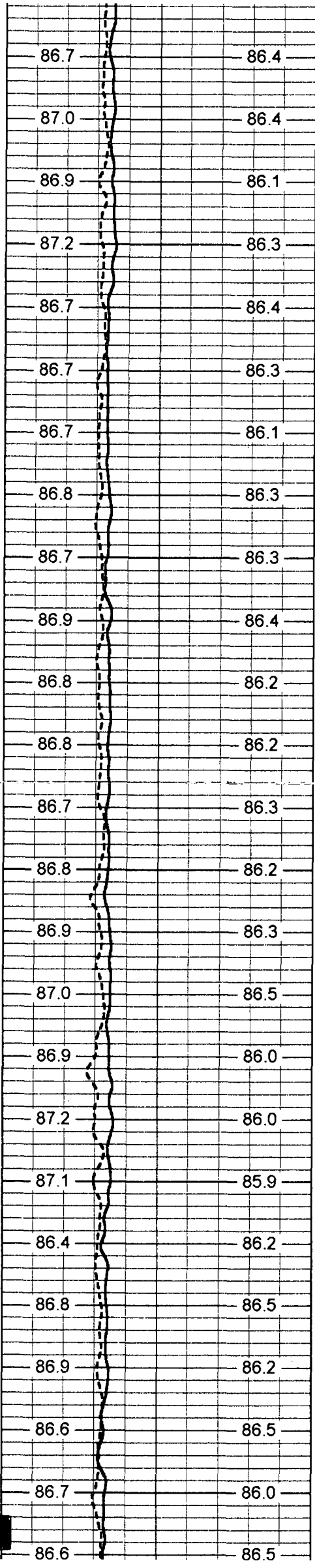
**MERGED FCT**

Database File: nleemw.db  
Dataset Pathname: run2/pass17  
Presentation Format: frt\_mg  
Dataset Creation: Sat Oct 18 19:33:48 2003 by Log 6.2\_B4

80	DYNAMIC TEMP (degF)	100
80	STATIC TEMP (degF)	100

20	DYNAMIC FLUID CONDUCTIVITY (uS)	200000
20	STATIC FLUID CONDUCTIVITY (uS)	200000





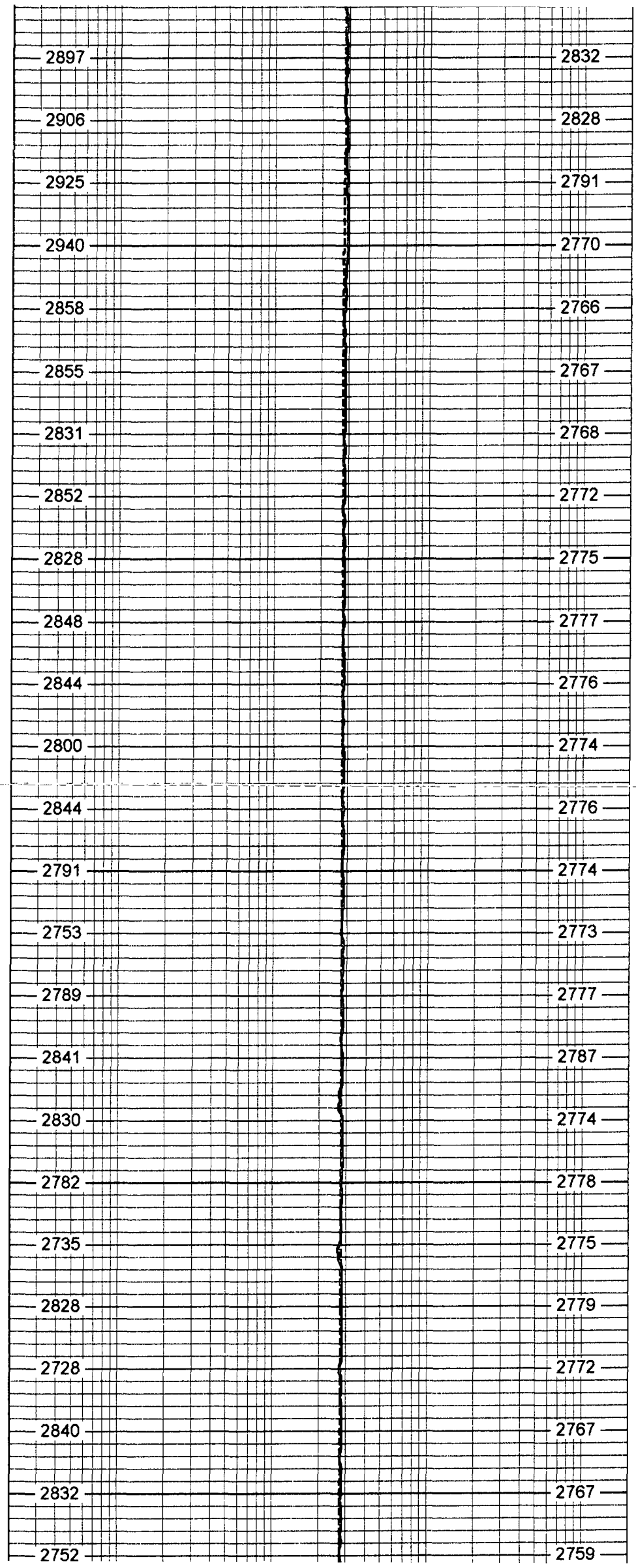
750

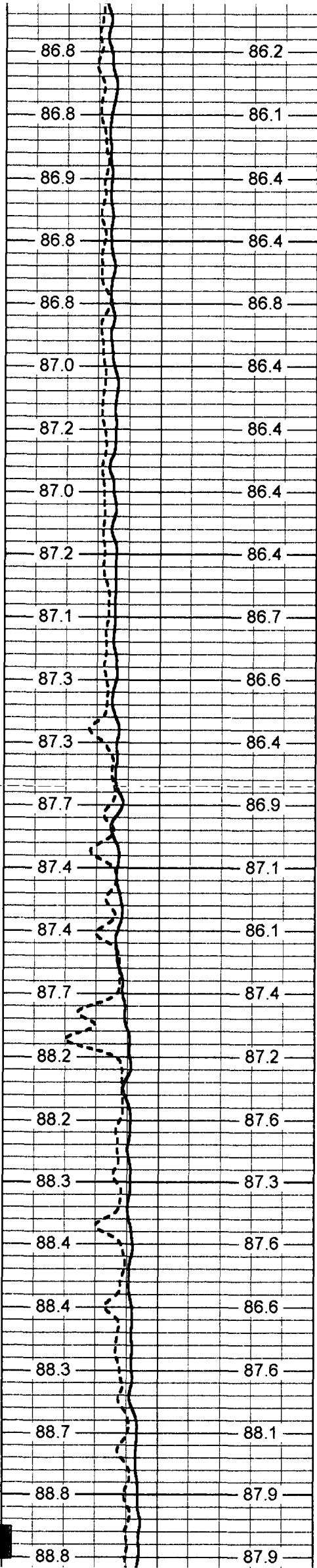
800

850

900

950





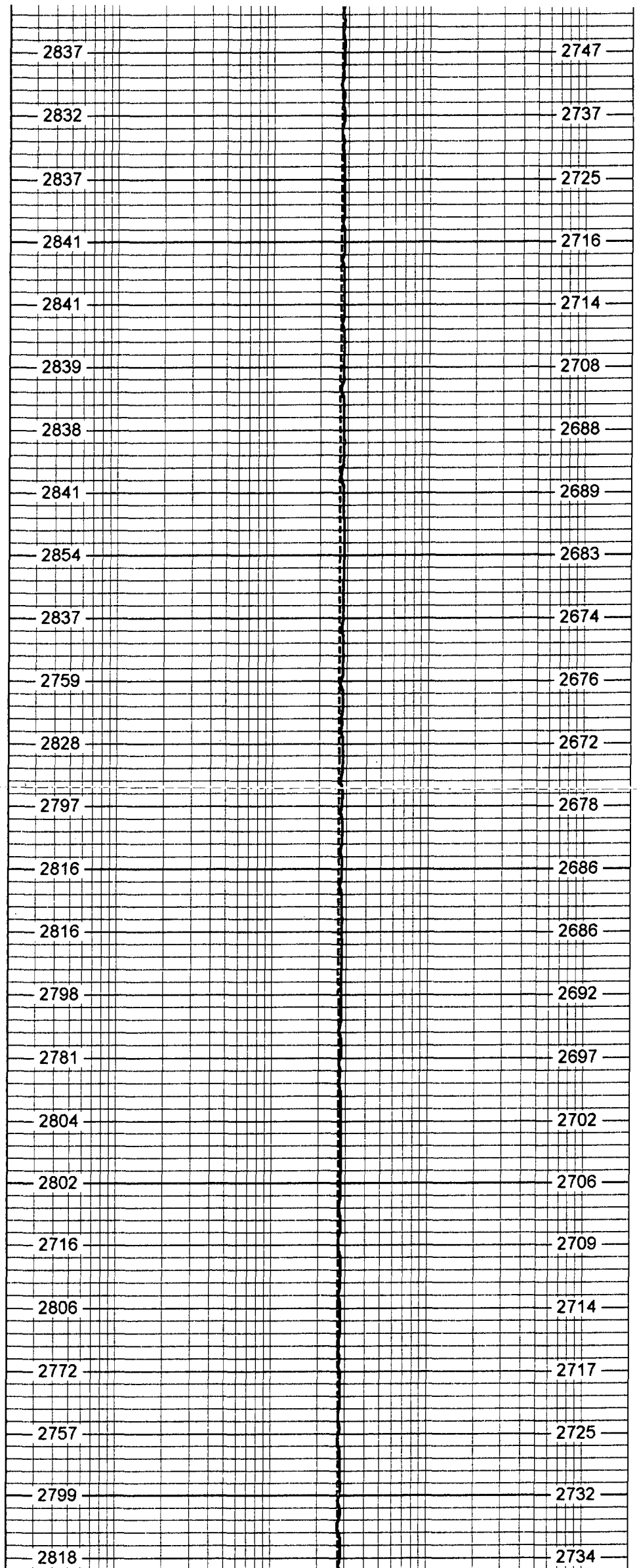
1000

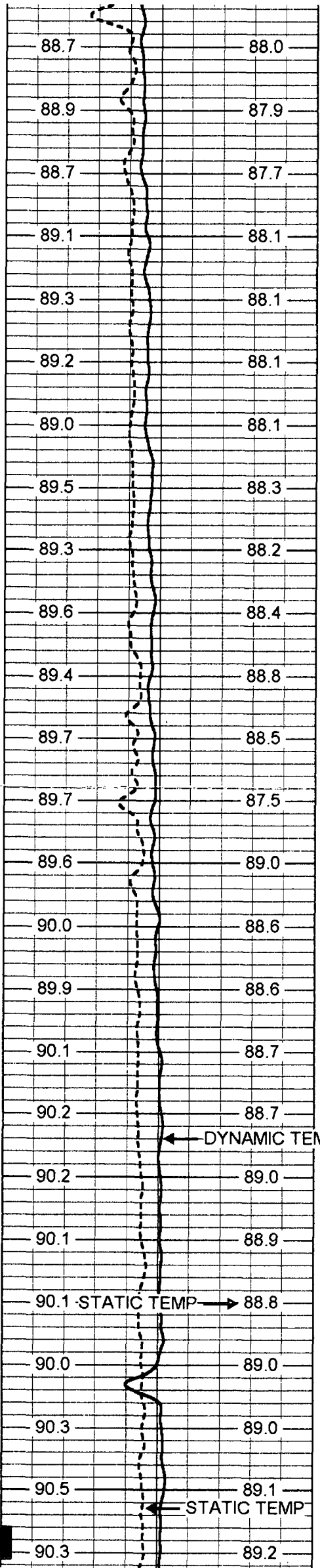
1050

1100

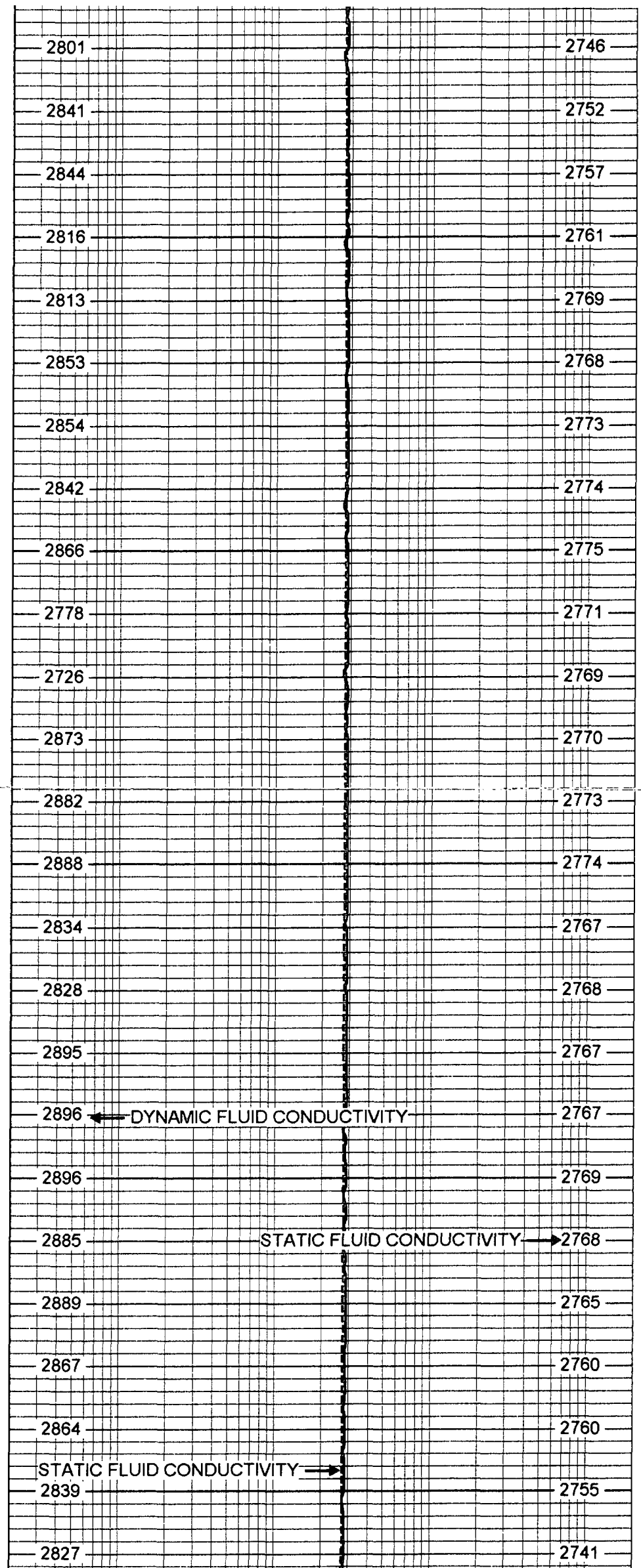
1150

1200





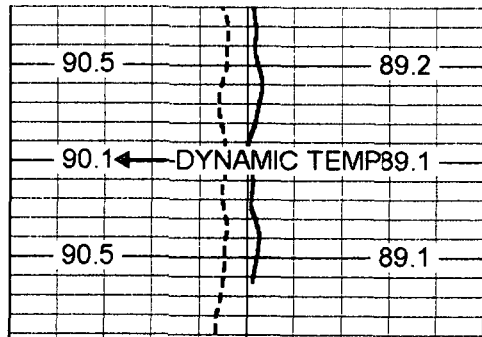
1250  
1300  
1350  
1400  
1450



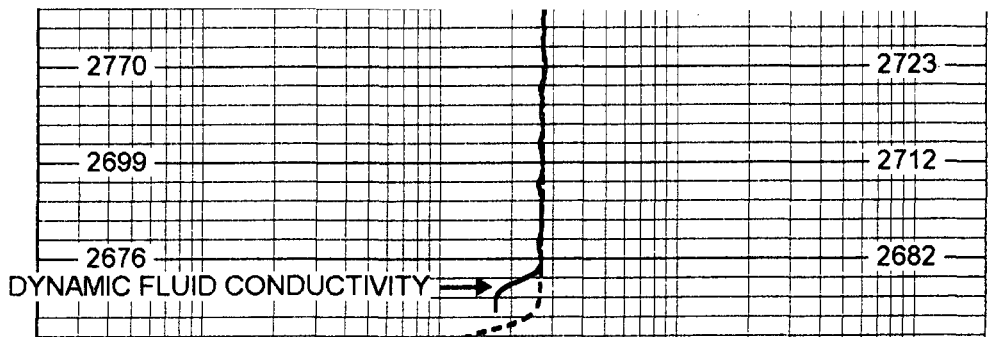
← DYNAMIC FLUID CONDUCTIVITY

STATIC FLUID CONDUCTIVITY →

STATIC FLUID CONDUCTIVITY →



80	DYNAMIC TEMP (degF)	100
80	STATIC TEMP (degF)	100



20	DYNAMIC FLUID CONDUCTIVITY (uS)	200000
20	STATIC FLUID CONDUCTIVITY (uS)	200000

### FRT Calibration Report

Serial Number: 30  
 Tool Model: SONDEX  
 Performed: Tue Apr 15 10:25:31 2003

Point #	Reading		Reference
1	32.596	cps	1000.000
2	175.215	cps	10000.000
3	425.338	cps	25000.000
4	967.399	cps	50000.000
5		cps	
6		cps	

### Temperature Calibration Report

Serial Number: 30  
 Tool Model: SONDEX  
 Performed: Fri Apr 04 09:46:01 2003

Point #	Reading		Reference	
1	121.963	cps	36	degF
2	312.065	cps	79	degF
3	608.77	cps	136	degF

