



**YOUNGQUIST
BROTHERS, Inc**

GEOPHYSICAL LOGGING DIVISION

**HIGH RESOLUTION
TEMPERATURE
LOG**

Company CITY OF IMMOKALEE
Well IW-1
Field IMMOKALEE W.W.T.P
County COLLIER
State FL

Company CITY OF IMMOKALEE
Well IW-1
Field IMMOKALEE W.W.T.P
County COLLIER
State FL

Location	Permanent Datum	Elevation	Other Services
	Log Measured From		RTS
	Drilling Measured From		VIDEO
			Elevation
			K.B.
			D.F.
			G.L.

Date NOV-20-06

Run Number MIT

Depth Driller 3350'

Depth Logger 3238'

Bottom Logged Interval 3238'

Top Log Interval SURFACE

Open Hole Size 12.25"

Type Fluid WATER

Density / Viscosity N/A

Max Recorded Temp. 85 F

Estimated Cement Top N/A

Time Well Ready 1000

Time Logger on Bottom 1030

Equipment Number 103

Location FT MYERS

Recorded By GOODWIN

Witnessed By M. BLACK


Borehole Record				Borehole Record			
Run Number	Bit	From	To	Run No.	Bit	From	To
ONE	12.25"	SURFACE	310'	ELEVEN	12.25"	2915'	3350'
TWO	4.2"	SURFACE	279'	ELEVEN	20.5"	2000'	2995'
THREE	12.25"	CASING	1011'				
SEVEN	28.5"	CASING	2005'				

Casing Record				Bottom			
Surface String	Size	Wgt/Ft	Top	Surface String	Size	Wgt/Ft	Bottom
Surface String	36"	375 W. T.	SURFACE	Production String	22"	375 W. T.	275'
Prot. String	30"	375 W. T.	SURFACE	Liner	12.75"	500 W. T.	930'
			SURFACE				2000'
			SURFACE				2986'

<<< Fold Here >>>

All interpretations are opinions based on inferences from electrical or other measurements and we cannot and do not guarantee the accuracy or correctness of any interpretation, and we shall not, except in the case of gross or willful negligence on our part, be liable or responsible for any loss, costs, damages, or expenses incurred or sustained by anyone resulting from any interpretation made by any of our officers, agents or employees. These interpretations are also subject to our general terms and conditions set out in our current Price Schedule.

Comments



**YOUNGQUIST
BROTHERS, Inc**
GEOPHYSICAL LOGGING DIVISION

TEMPERATURE

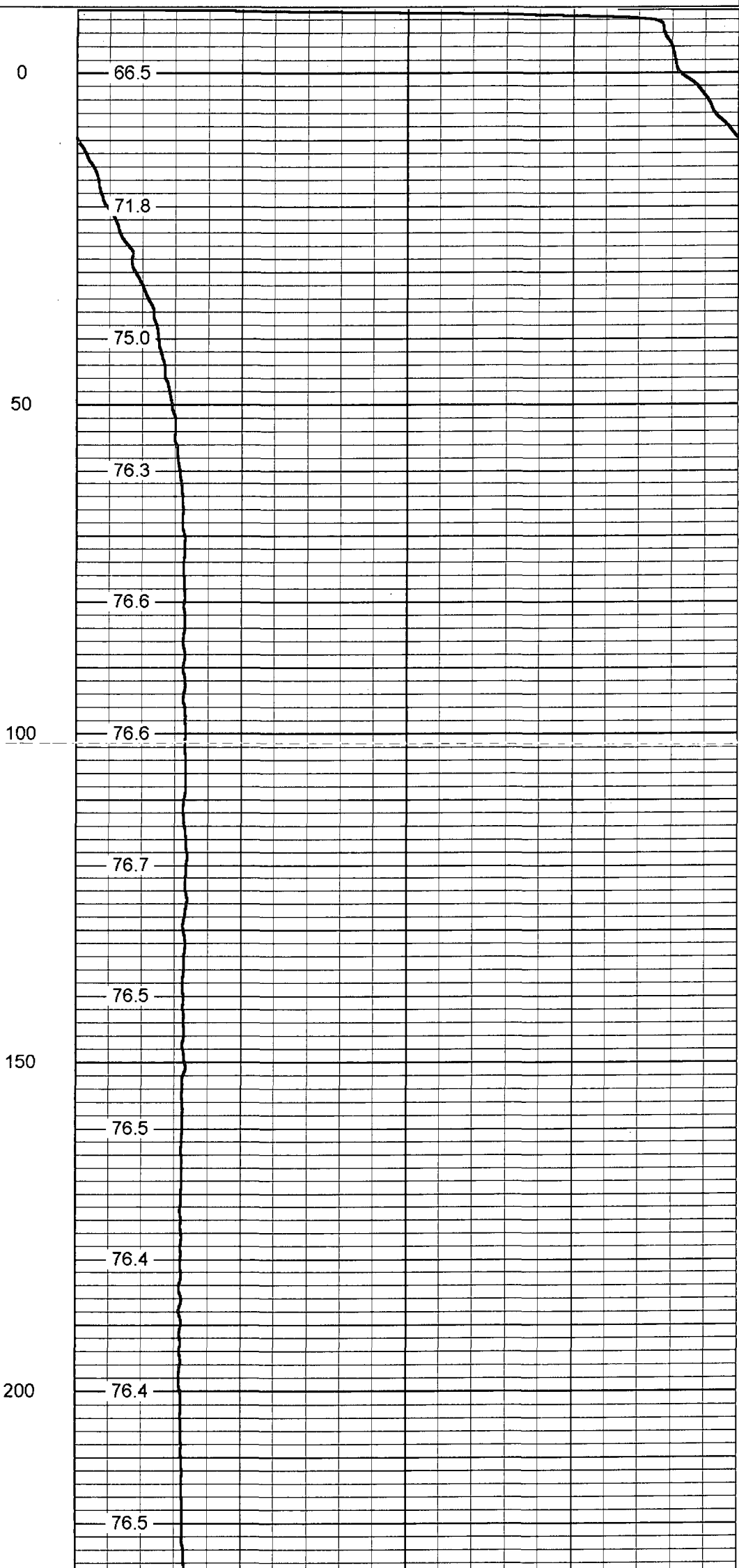
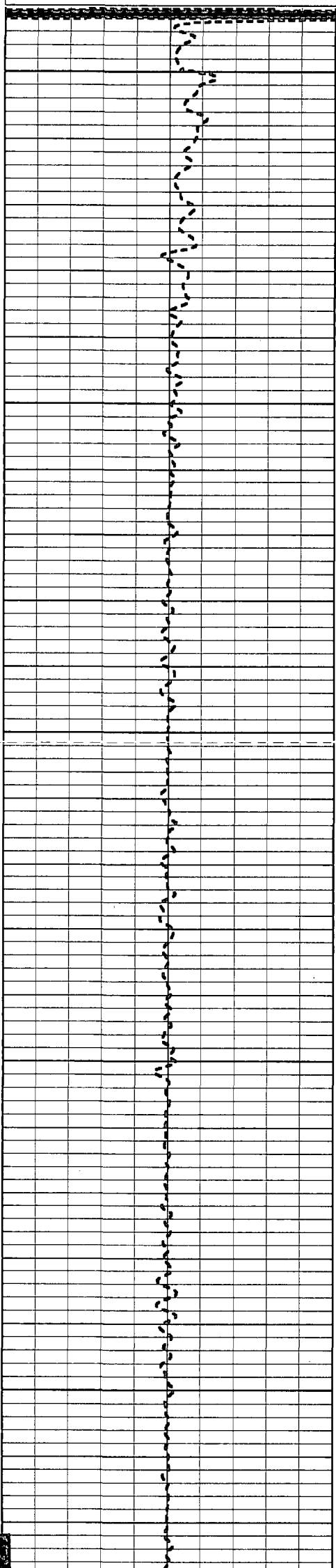
Database File: imok06.db
 Dataset Pathname: pass1
 Presentation Format: temp
 Dataset Creation: Mon Nov 20 10:07:09 2006 by Loa 6.2 B4

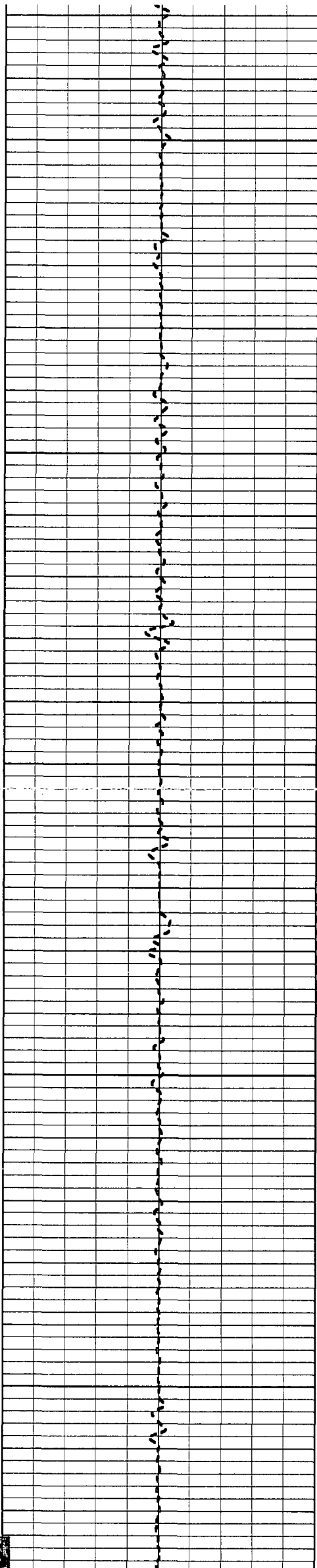
-2 DELTA TEMPERATURE (degF) 2

70

TEMPERATURE (degF)

110





250

300

350

400

450

76.5

76.7

76.5

76.8

76.8

76.9

77.0

77.3

77.2

77.2

77.3

77.3



500

77.5

77.6

77.7

550

77.7

77.8

600

77.9

77.9

78.1

650

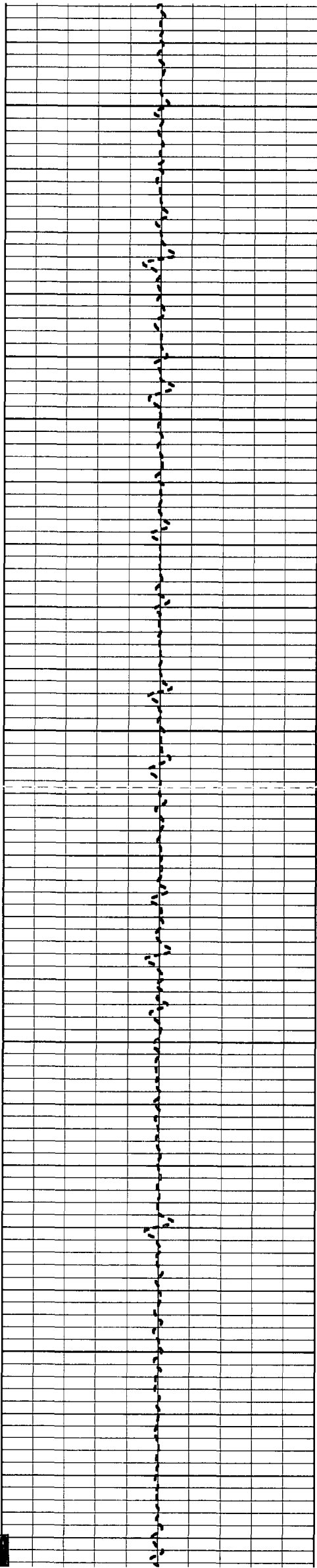
78.2

78.2

700

78.3

78.3



750

800

850

900

950

78.5

78.5

78.5

78.4

78.5

78.6

78.8

79.1

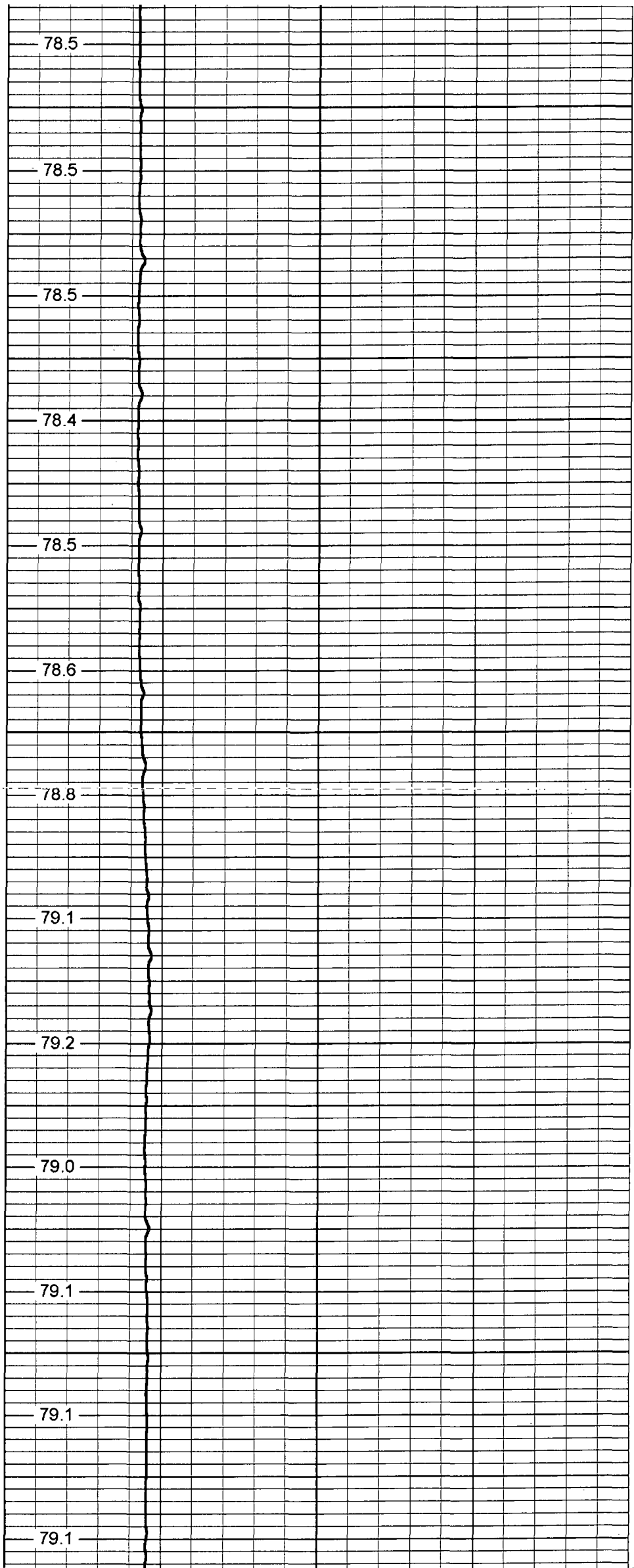
79.2

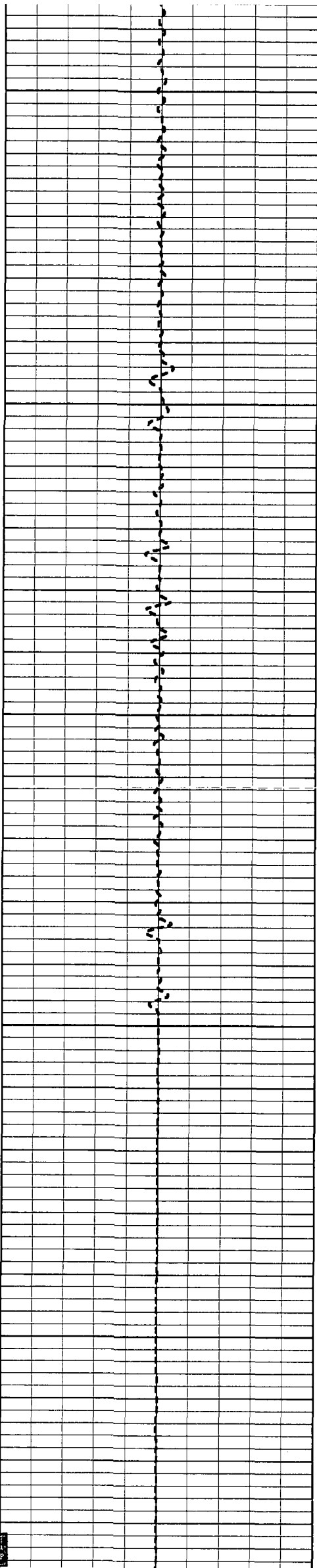
79.0

79.1

79.1

79.1





1000

79.1

79.2

79.2

1050

79.3

79.2

1100

79.2

79.3

79.3

1150

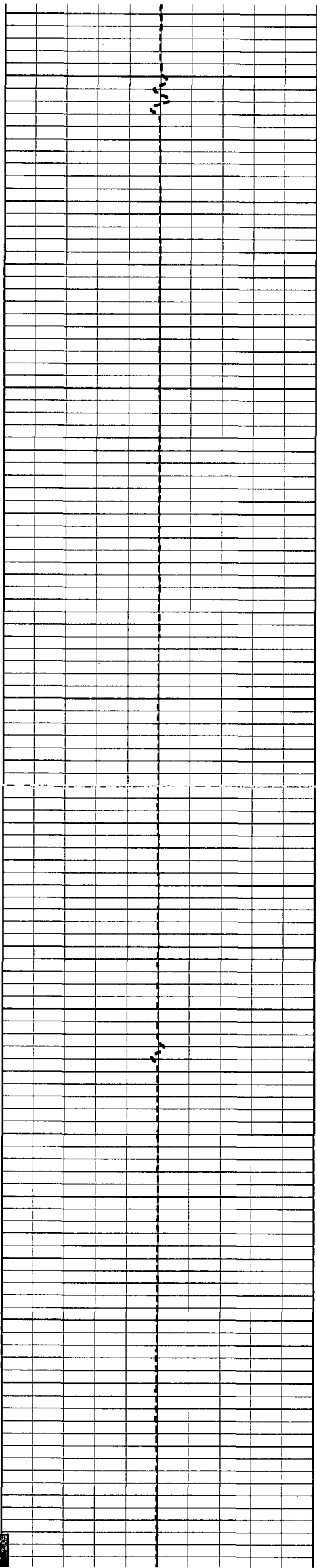
79.5

79.6

1200

79.6

79.7



1250

1300

1350

1400

1450

79.8

79.8

79.9

80.0

80.1

80.2

80.2

80.2

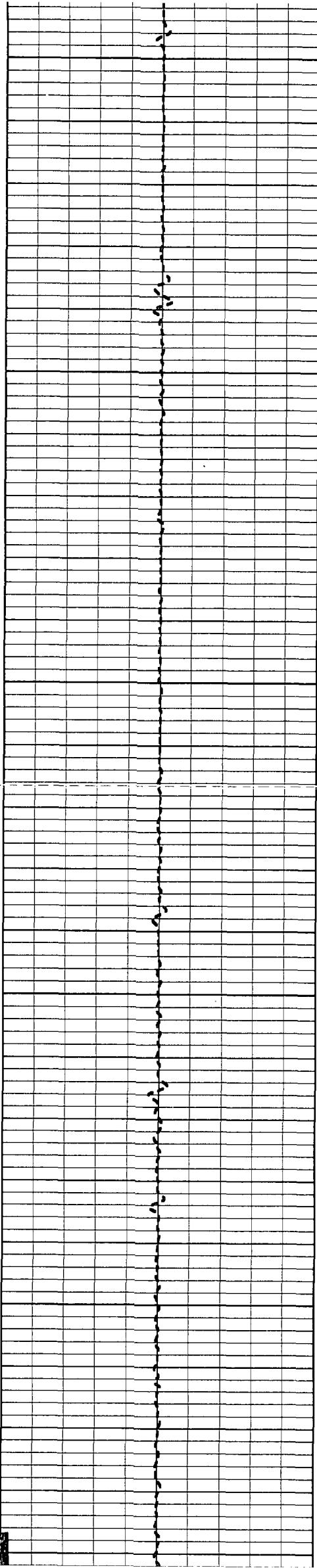
80.3

80.3

80.4

80.4

80.3



1500

80.4

80.6

80.8

1550

80.8

80.8

1600

80.8

80.9

81.1

1650

81.1

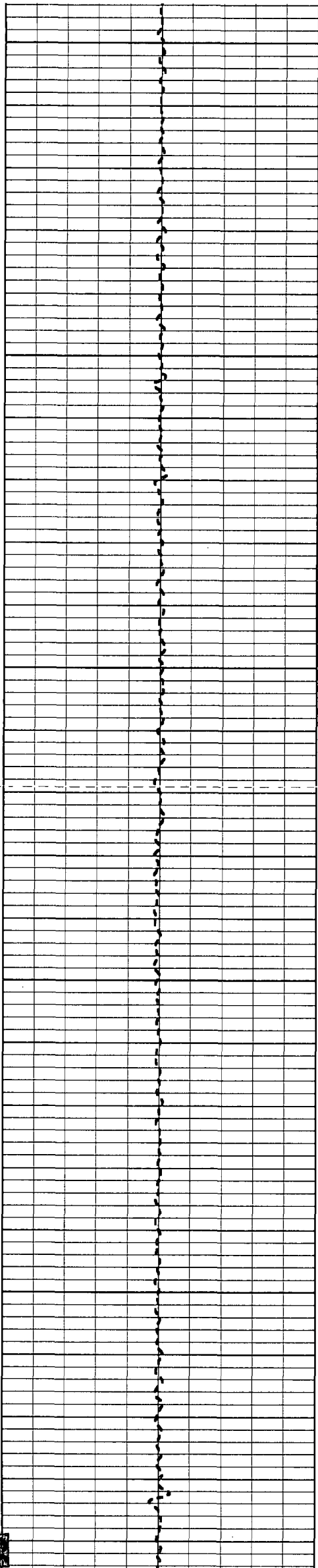
81.1

1700

81.2

81.3

81.5



1750

81.6

81.6

1800

81.7

81.8

81.7

1850

82.2

82.3

1900

81.8

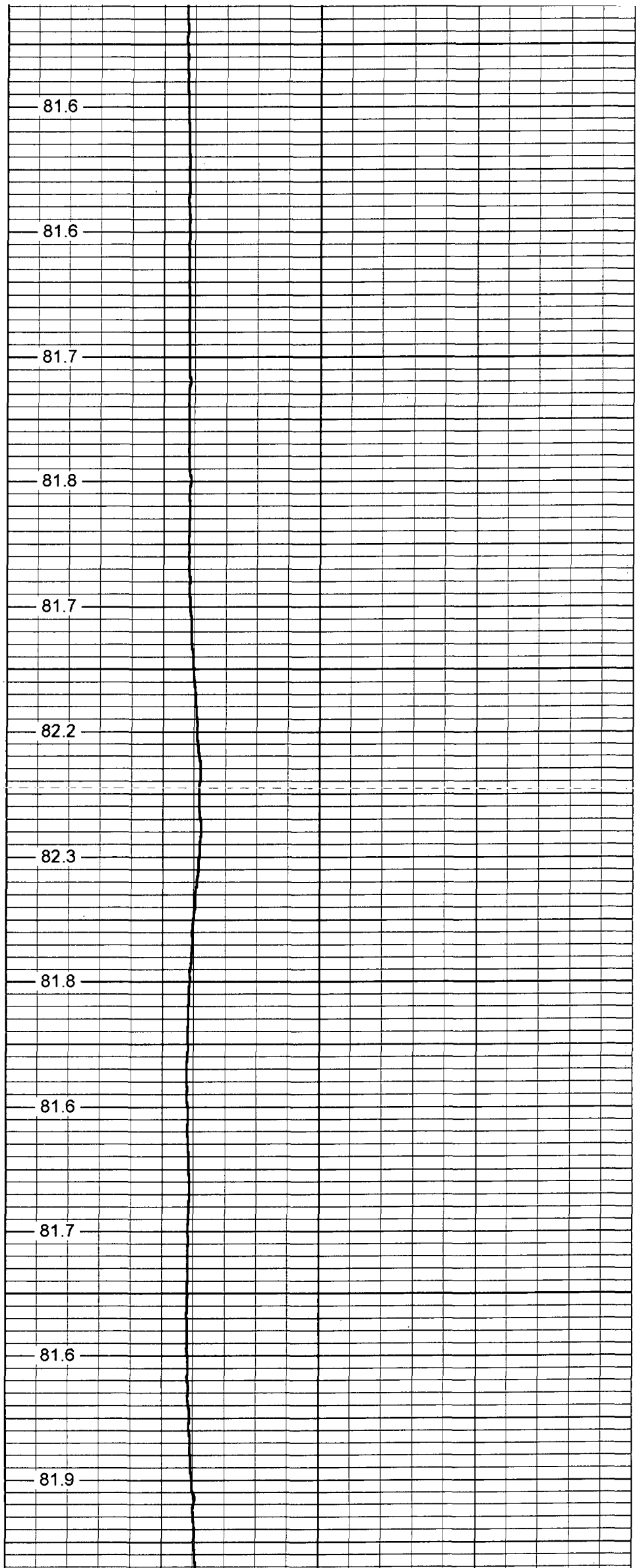
81.6

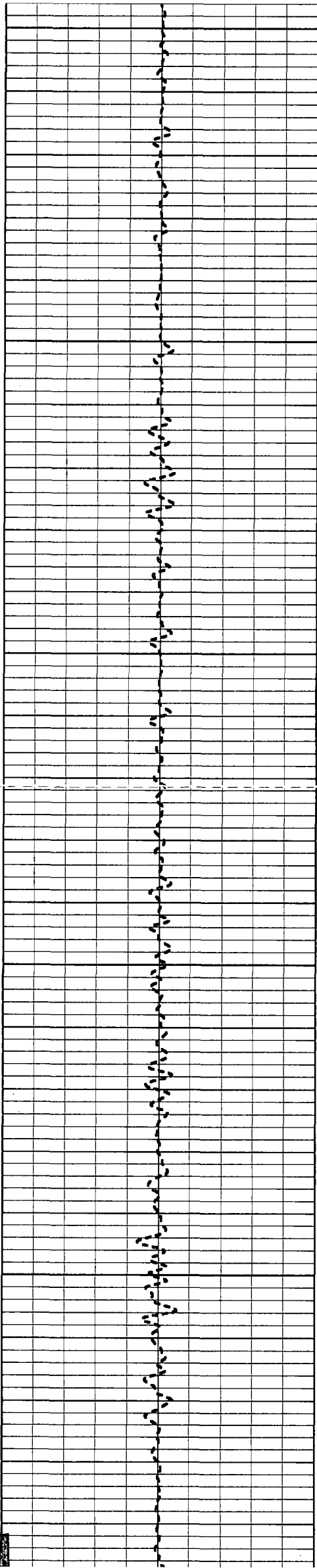
81.7

1950

81.6

81.9





2000

2050

2100

2150

2200

82.3

82.5

82.5

82.5

82.5

82.6

82.8

83.0

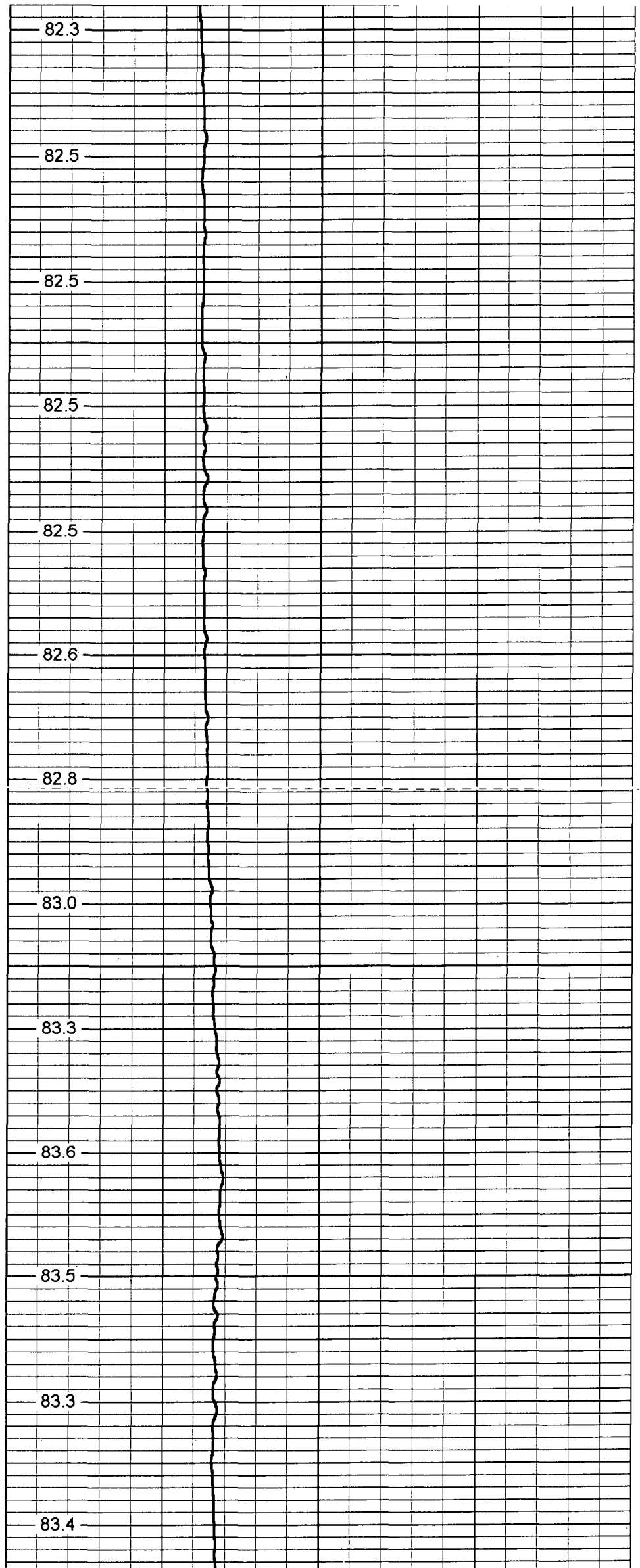
83.3

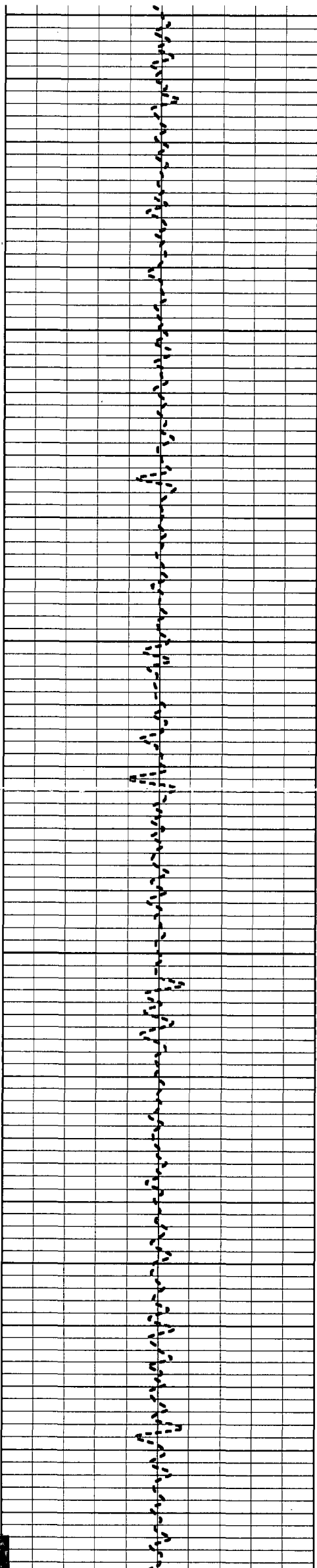
83.6

83.5

83.3

83.4





2250

83.4

83.6

2300

83.4

84.0

84.5

2350

84.3

84.1

2400

83.9

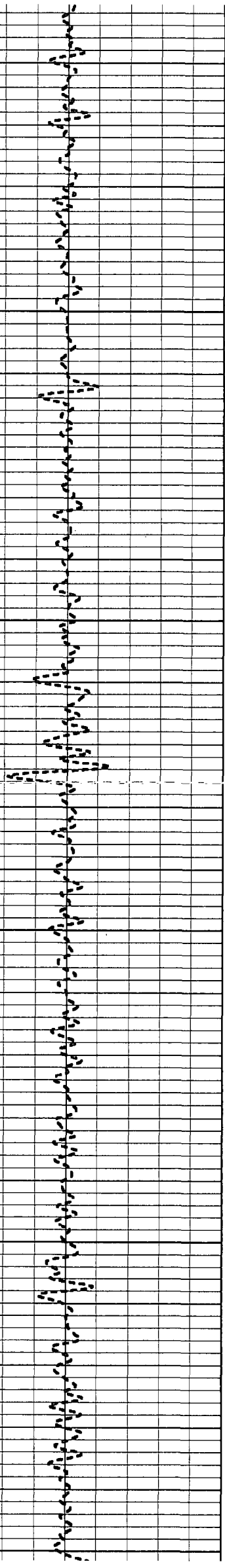
83.8

83.7

2450

83.9

84.3



2550

2600

2650

2700

2750

84.9

84.2

84.0

84.1

84.2

84.5

84.5

84.4

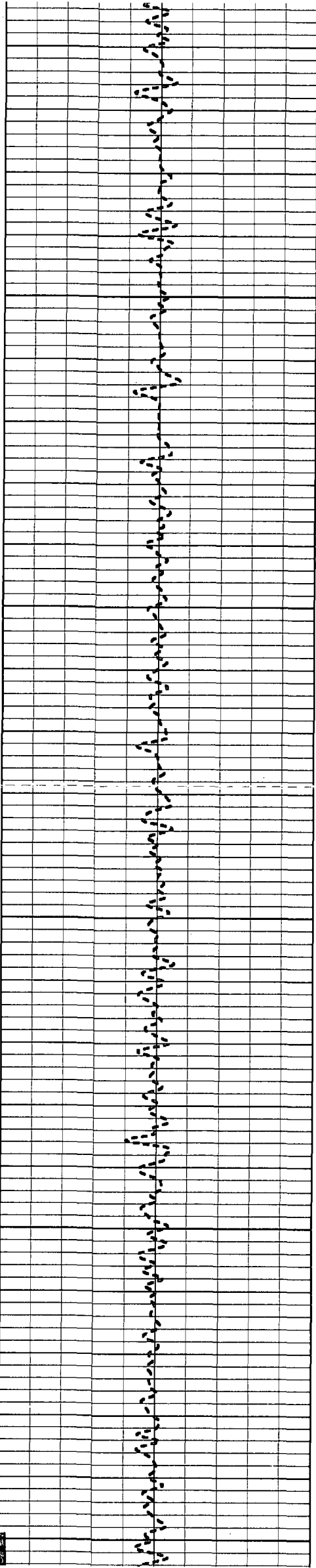
85.0

84.9

84.9

85.1





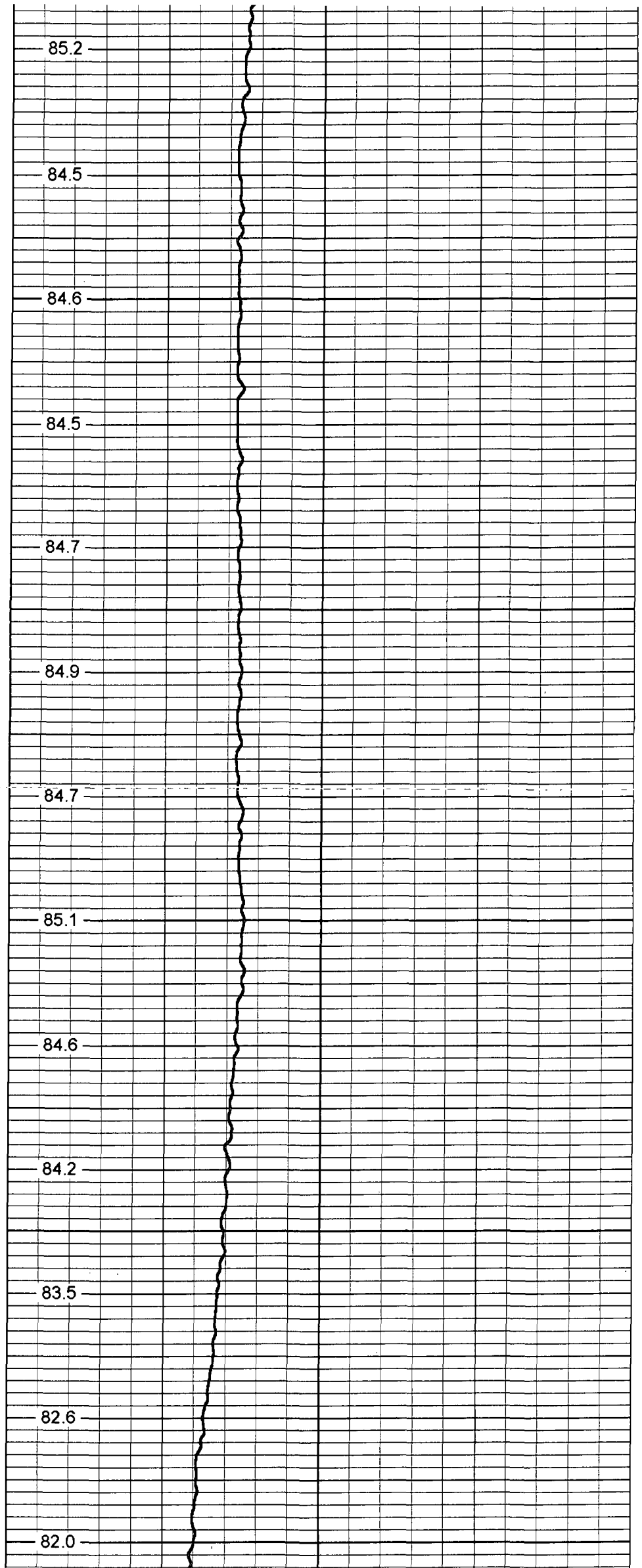
2800

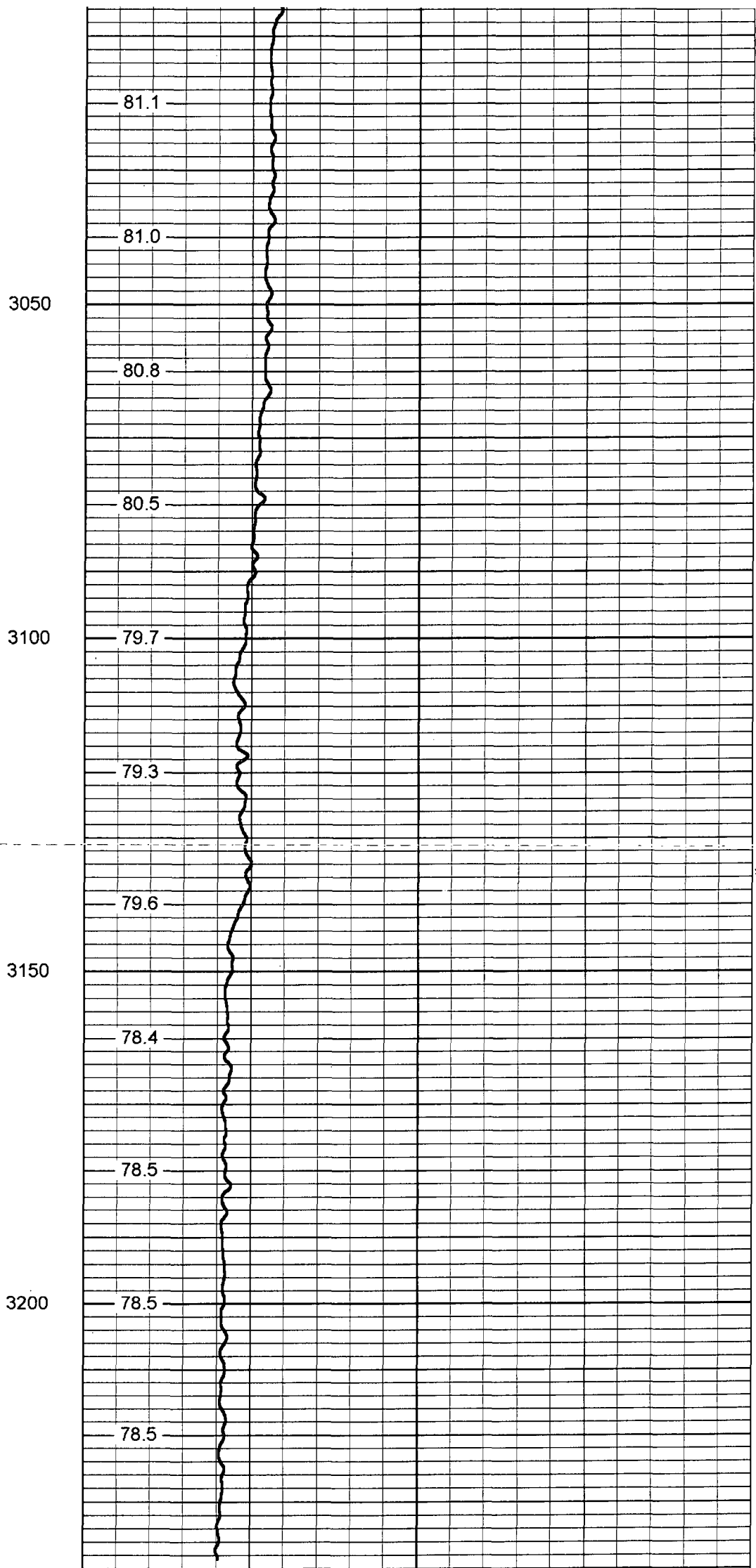
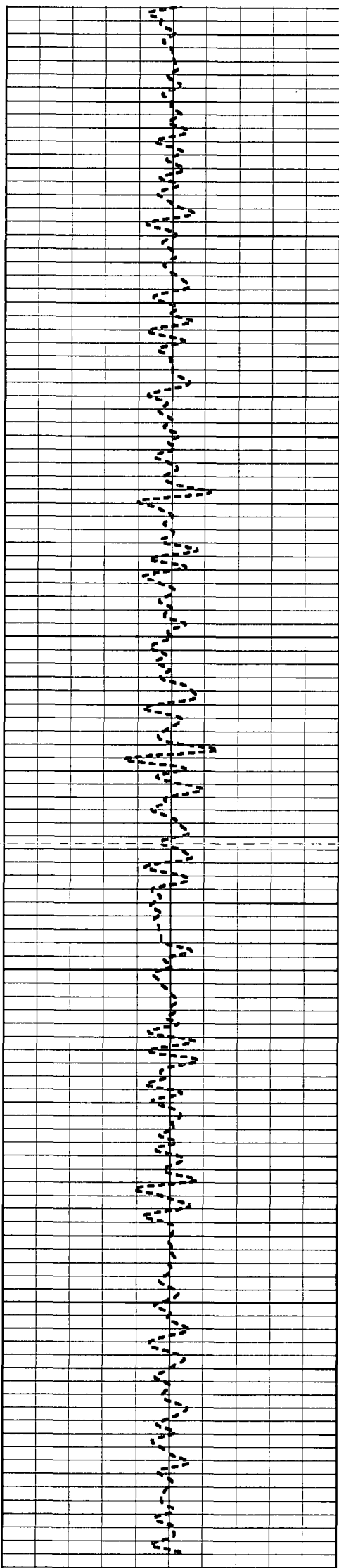
2850

2900

2950

3000



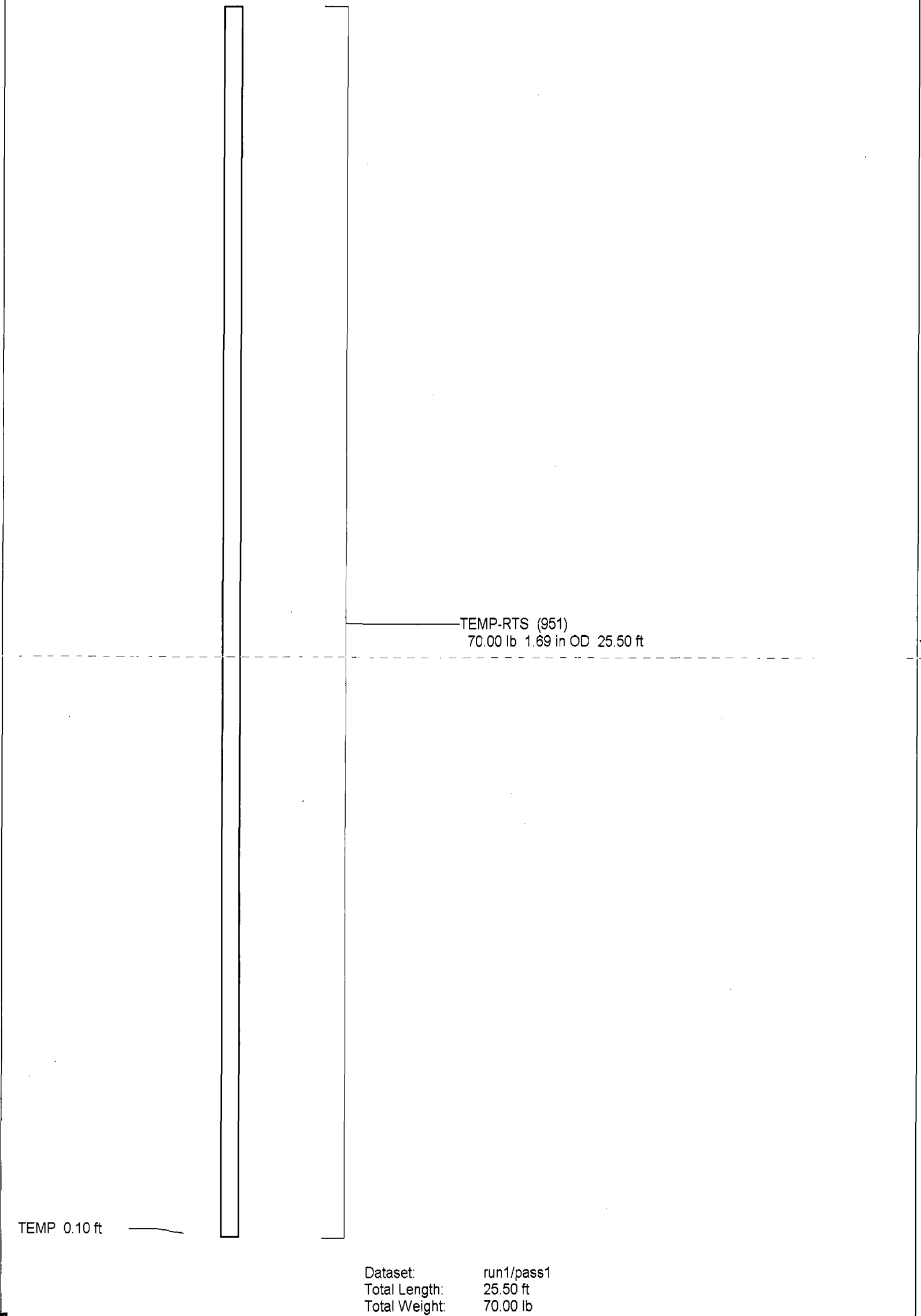


-2 DELTA TEMPERATURE (degF) 2

70

TEMPERATURE (degF)

110



TEMP-RTS (951)
70.00 lb 1.69 in OD 25.50 ft

TEMP 0.10 ft

Dataset:	run1/pass1
Total Length:	25.50 ft
Total Weight:	70.00 lb
O.D.	1.69 in

Temperature Calibration Report

Serial Number: 951
Tool Model: RTS
Performed: Thu Nov 17 15:10:25 2005

Point #	Reading		Reference	
1	410	cps	41	degF
2	810.2	cps	81	degF
3	1570.6	cps	157	degF