



GEOPHYSICAL LOGGING DIVISION

YOUNGQUIST BROTHERS, Inc

TEMPERATURE SURVEY

Company CH2M HILL
Well IMMOKALEE IW-1
Field IMMOKALEE W.W.T.P.
County COLLIER
State FL

Company CH2M HILL
Well IMMOKALEE IW-1
Field IMMOKALEE W.W.T.P.
County COLLIER
State FL

Location

Other Services
RTS

Permanent Datum

Elevation

Elevation

Log Measured From

K.B.

D.F.

G.L.

Drilling Measured From

Date 1/22/02

Run Number M11

Depth Driller 3350'

Depth Logger 3350'

Bottom Logged Interval 3350'

Top Log Interval SURFACE

Open Hole Size 12.25"

Type Fluid WATER

Density / Viscosity N/A

Max. Recorded Temp. 101 DEGF

Estimated Cement Top N/A

Time Well Ready ON ARRIVAL

Time Logger on Bottom 1530

Equipment Number 103

Location FT. MYERS

Recorded By DENISON

Witnessed By T. LEVI

Borehole Record

Run Number	Bit	From	To	Size	Weight	From	To
ONE	12.25"	SURFACE	310'	ELEVEN	12.25"	2915'	3350'
TWO	42"	SURFACE	279'	ELEVEN	20.50"	2000'	2995'
THREE	12.25"	CASING	1011'				
SEVEN	28.5"	CASING	2005'				

Tubing Record

Size	Weight	From	Bottom
36"	375 W.T.	SURFACE	275'
30"	375 W.T.	SURFACE	930'
22"	375 W.T.	SURFACE	2000'
12.75"	500 W.T.	SURFACE	2983'

<<< Fold Here >>>

All interpretations are opinions based on inferences from electrical or other measurements and we cannot and do not guarantee the accuracy or correctness of any interpretation, and we shall not, except in the case of gross or willful negligence on our part, be liable or responsible for any loss, costs, damages, or expenses incurred or sustained by anyone resulting from any interpretation made by any of our officers, agents or employees. These interpretations are also subject to our general terms and conditions set out in our current Price Schedule.

Comments



YOUNGQUIST BROTHERS, Inc

GEOPHYSICAL LOGGING DIVISION

TEMPERATURE SURVEY

Database File: immok1-1.db
Dataset Pathname: run3/pass1
Presentation Format: temp.prs

Charted by:

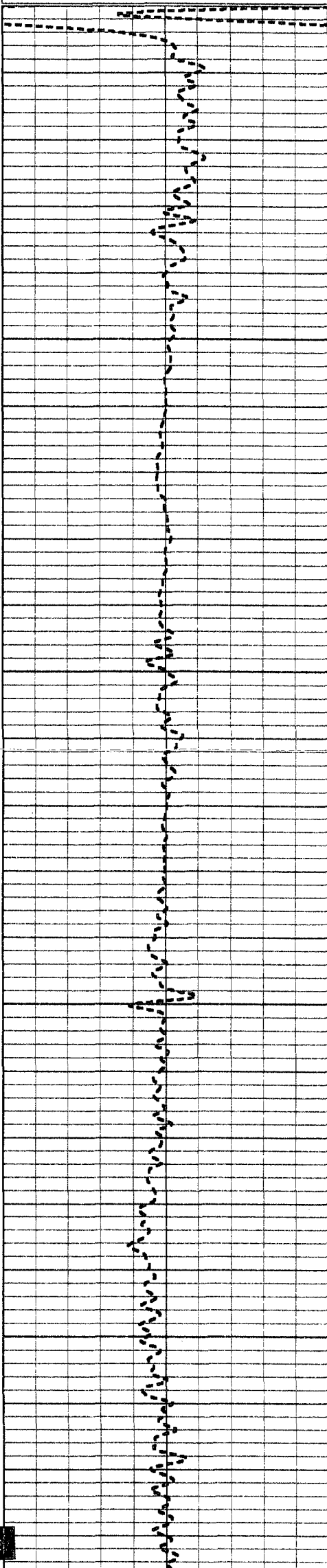
Depth in Feet scaled 1:240

-0.5 DELTA TEMPERATURE (degF) 0.5

50

TEMPERATURE (degF)

150

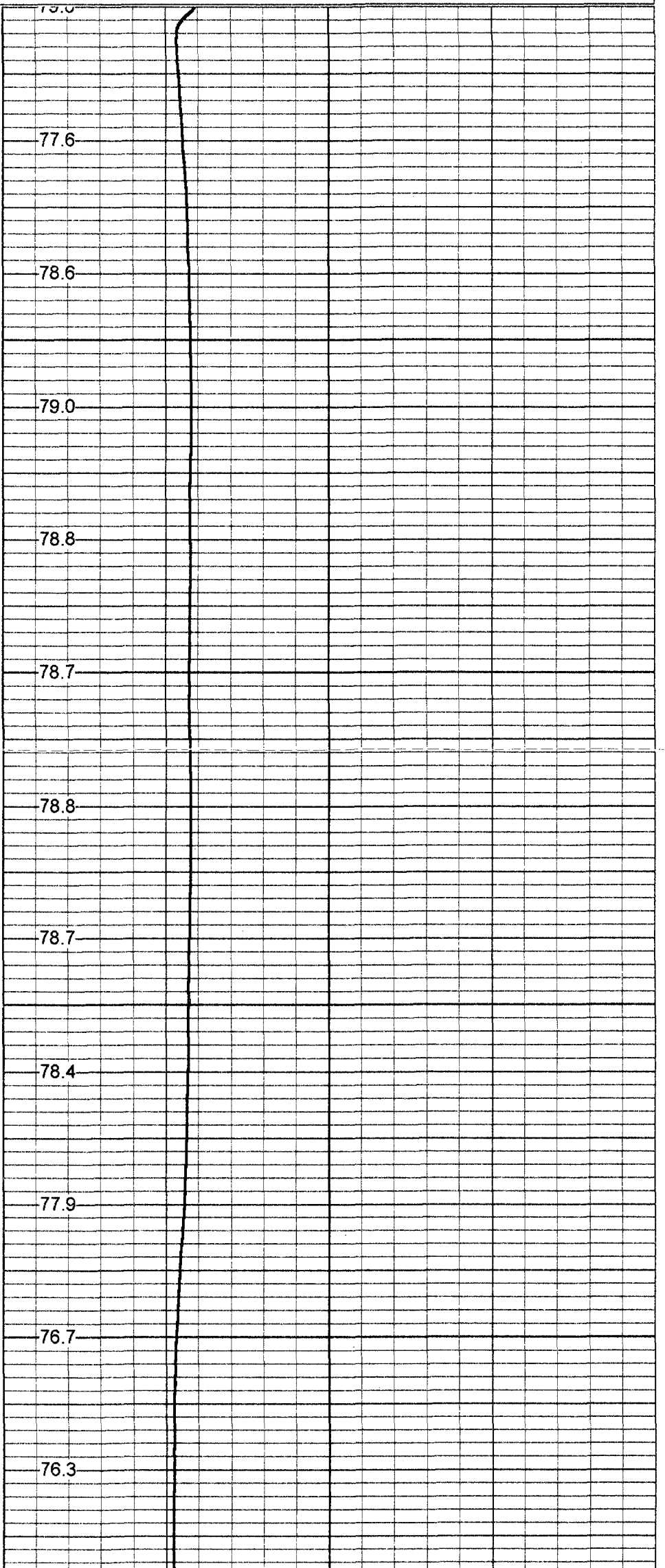


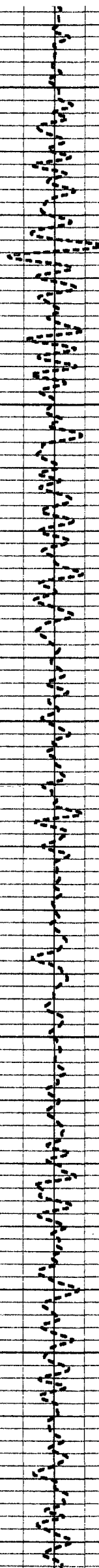
50

100

150

200





250

300

350

400

450

76.2

76.4

76.4

76.4

76.4

76.4

76.6

76.8

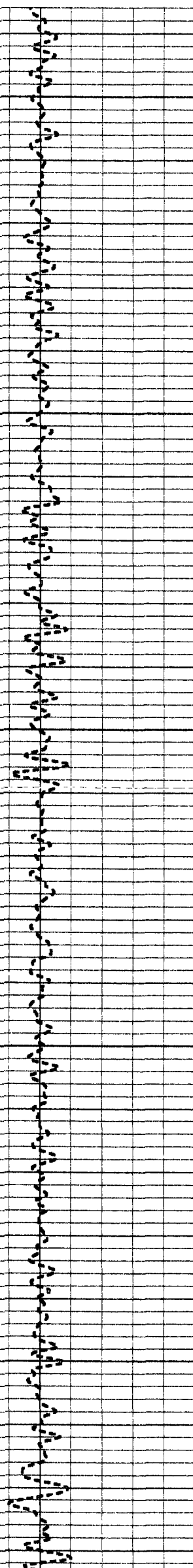
76.9

77.1

77.2

77.2

77.3



500

77.4

77.4

77.5

550

77.5

77.5

600

77.6

77.8

77.8

650

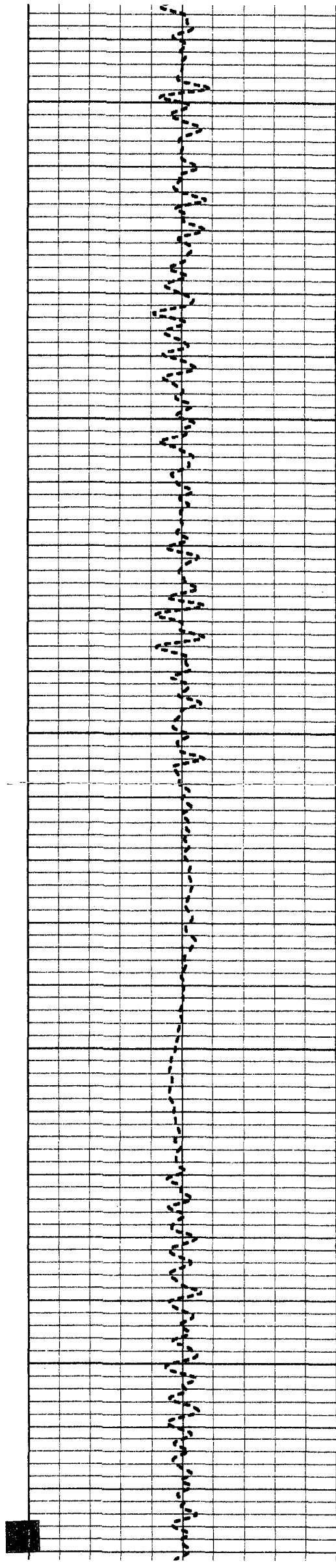
77.9

78.0

700

78.1

78.2



750

78.2

78.4

78.5

800

78.4

78.4

78.5

850

78.6

79.0

900

79.2

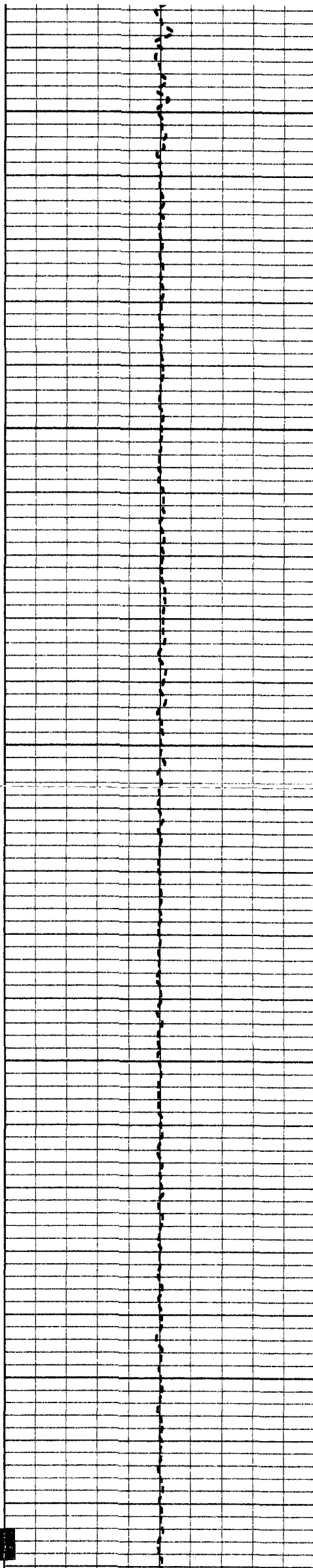
78.7

78.6

950

78.6

78.7



1000

78.8

78.9

79.0

1050

79.0

79.2

1100

79.4

79.5

79.5

1150

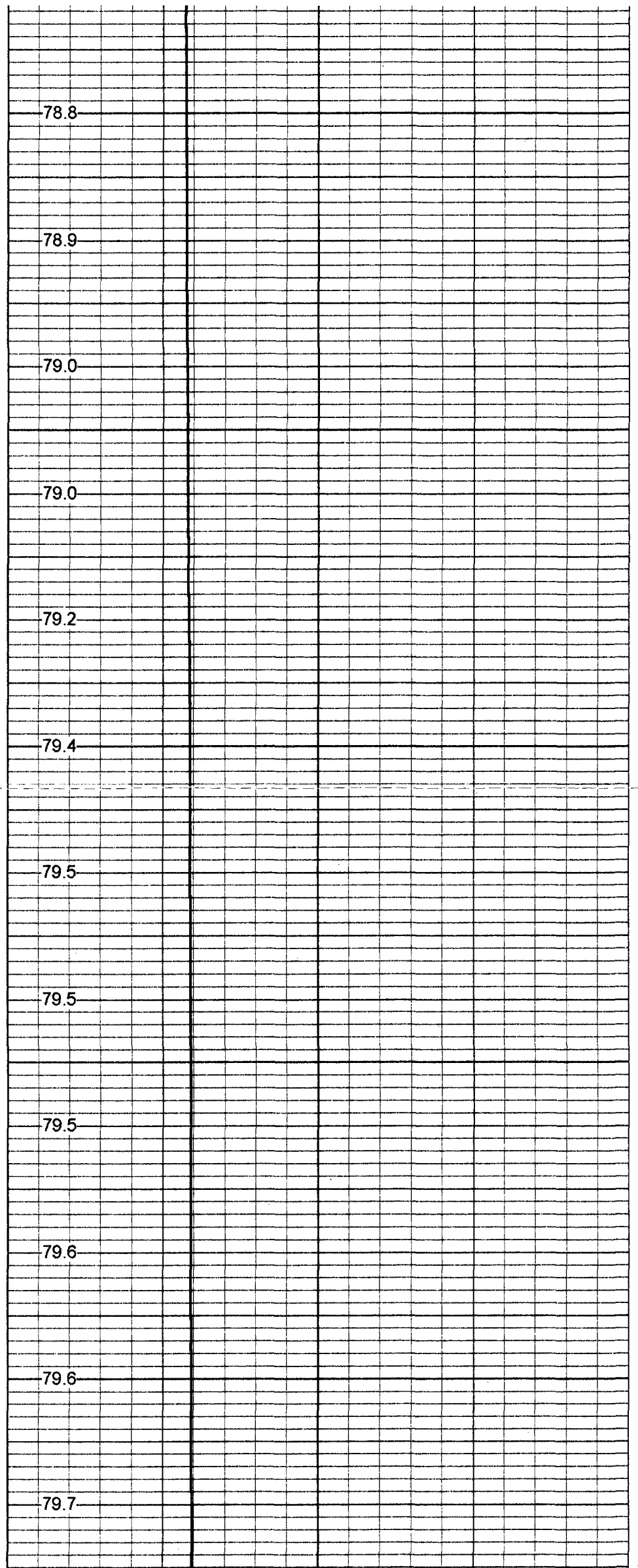
79.5

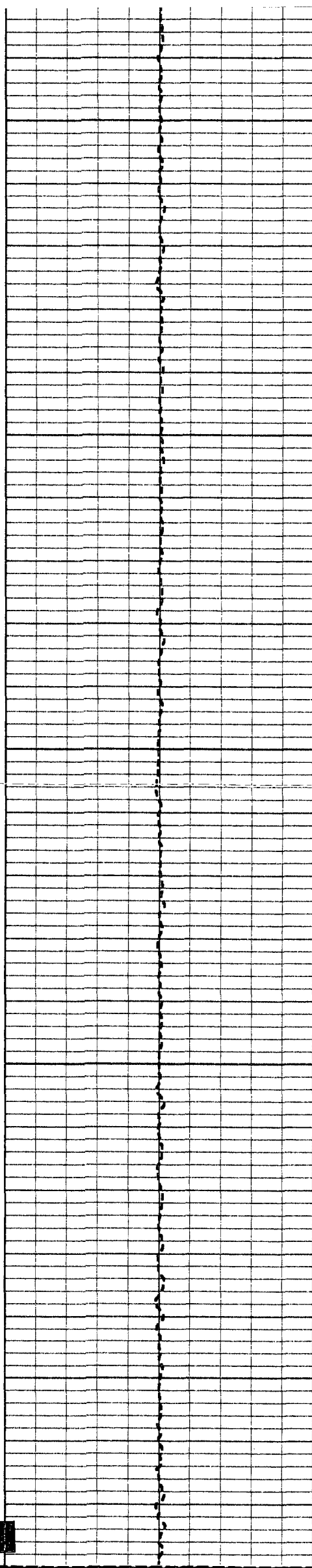
79.6

1200

79.6

79.7





1250

79.8

79.9

79.9

1300

80.0

80.2

80.3

1350

80.2

80.3

1400

80.4

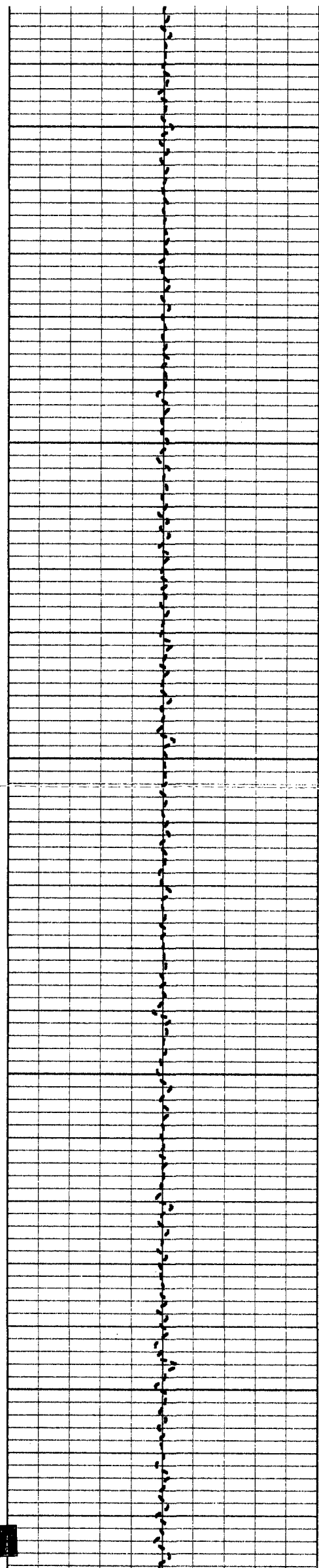
80.5

80.6

1450

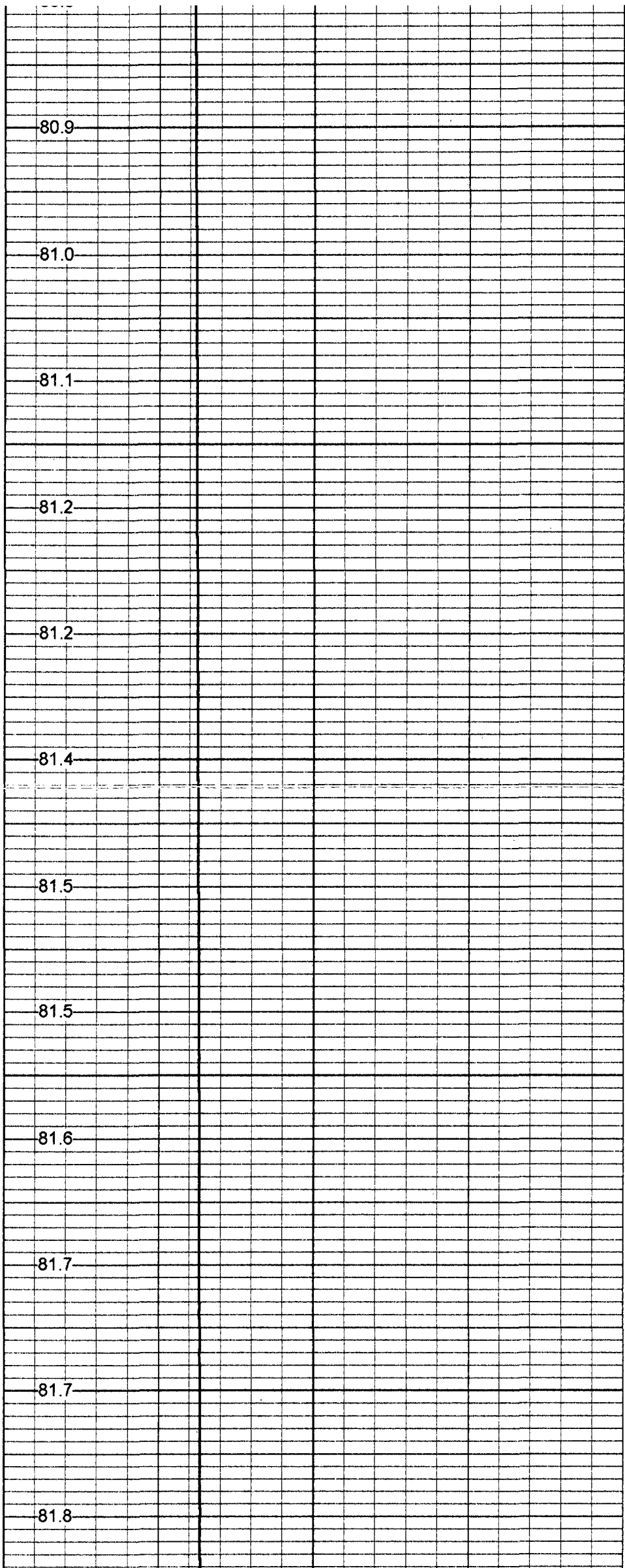
80.7

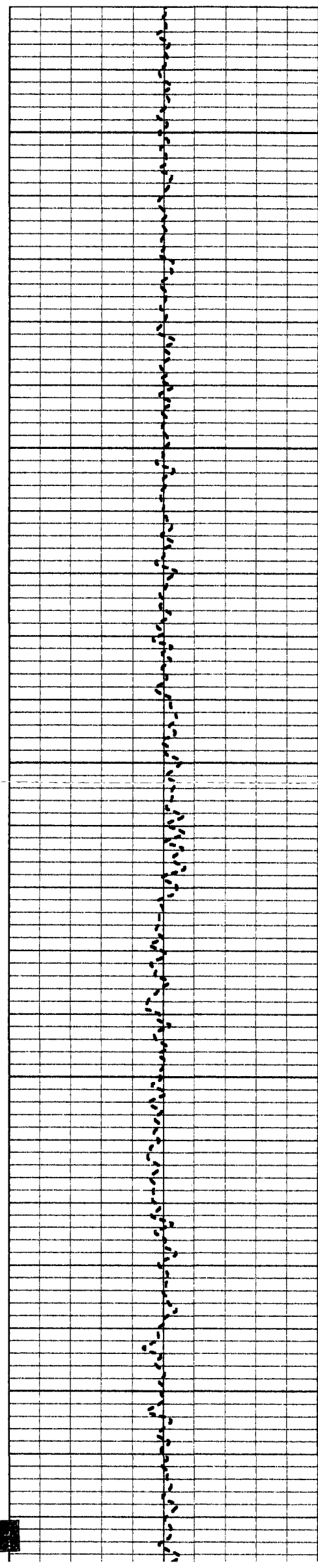
80.8



1500
1550
1600
1650
1700

80.9
81.0
81.1
81.2
81.2
81.4
81.5
81.5
81.6
81.7
81.7
81.8





1750

1800

1850

1900

1950

81.8

81.9

82.0

82.1

82.2

82.2

82.8

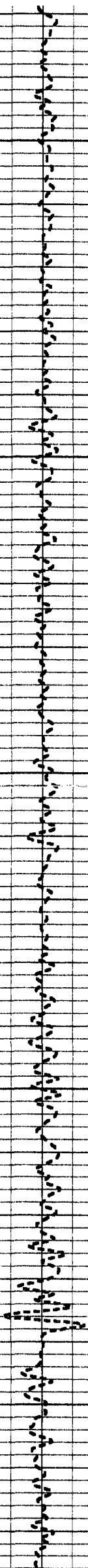
83.1

82.9

82.4

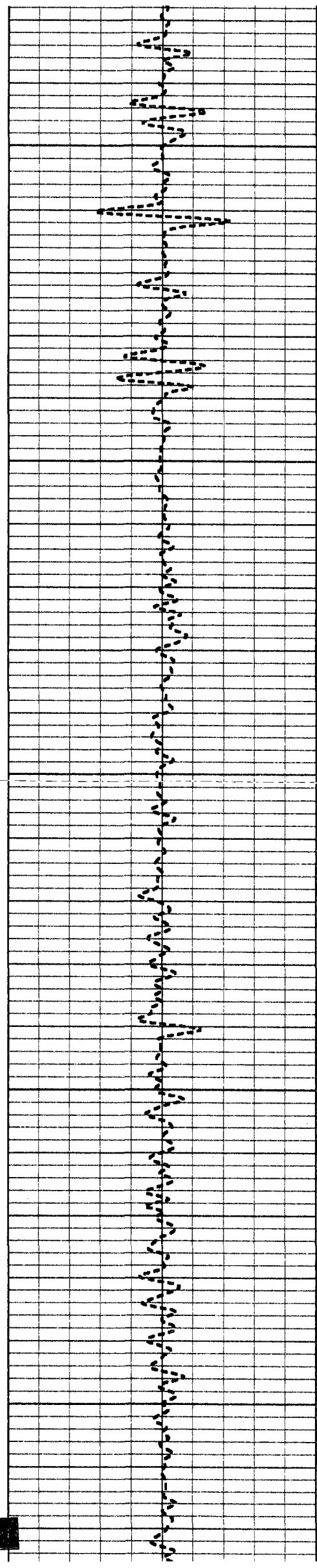
82.5

82.3



2000
2050
2100
2150
2200

82.6
82.9
83.2
83.4
83.6
83.6
83.8
84.1
84.2
84.4
84.9
84.9
84.8



2250

2300

2350

2400

2450

84.9

84.9

85.1

85.1

85.2

85.7

85.6

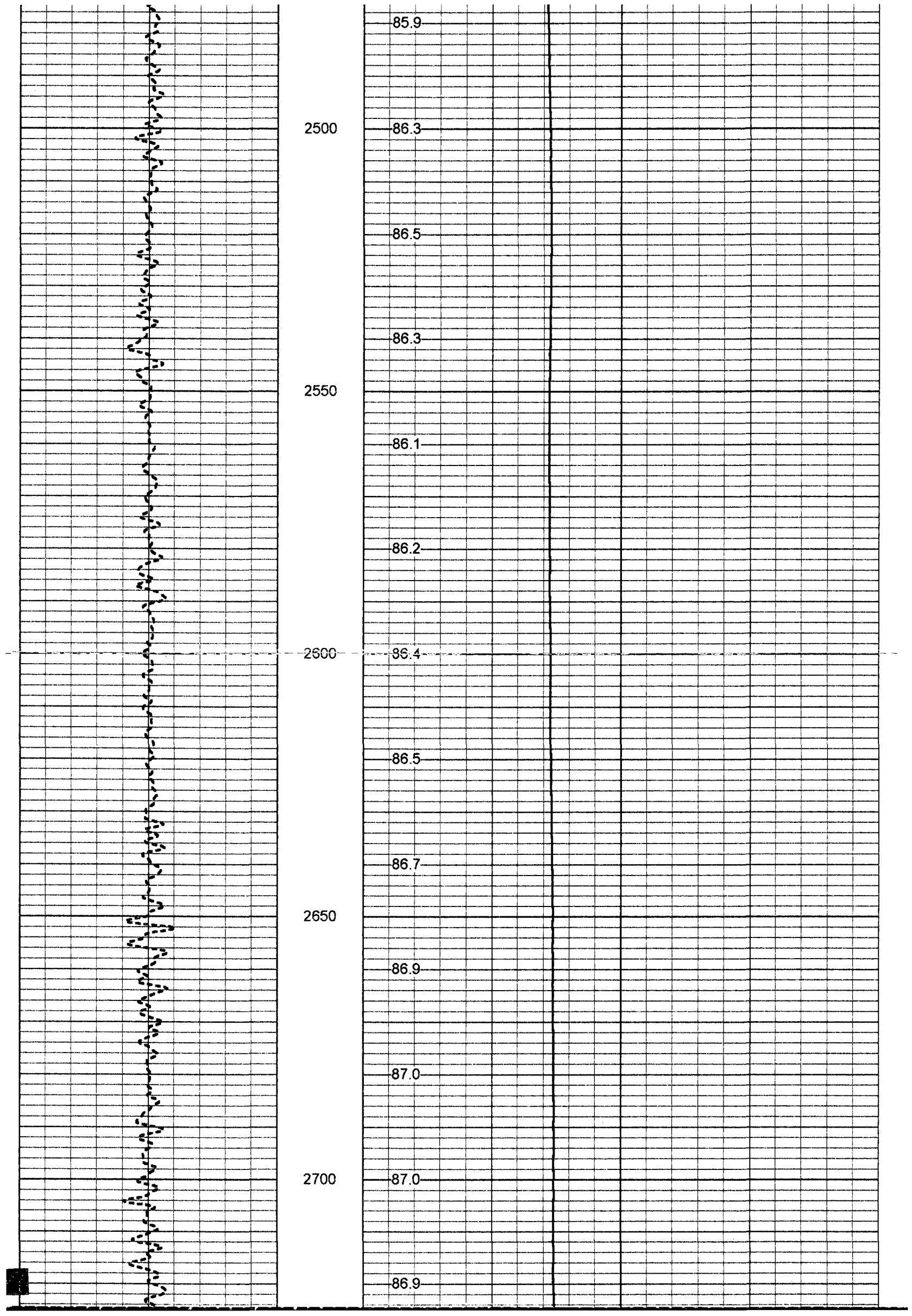
85.4

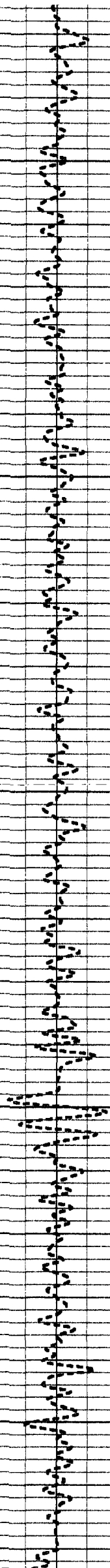
85.4

85.4

85.4

85.6





2750

87.5

87.3

87.0

2800

87.2

87.2

87.3

2850

87.6

87.6

2900

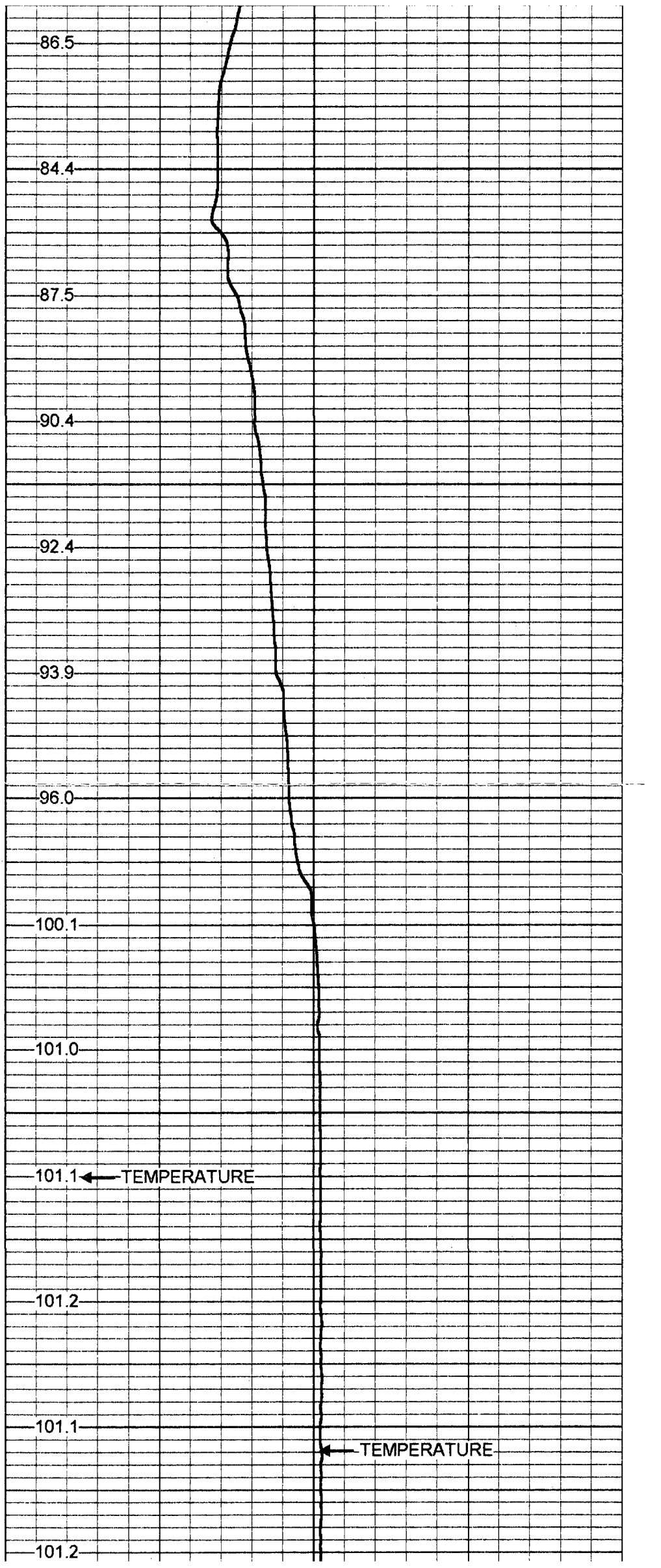
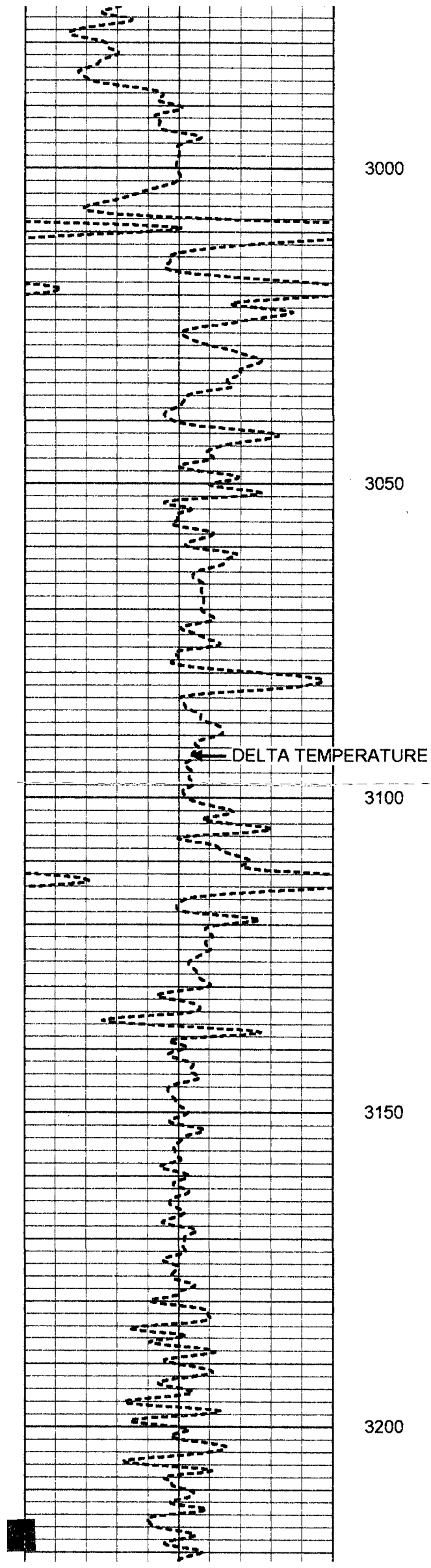
87.7

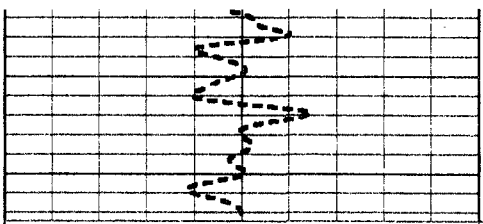
88.0

2950

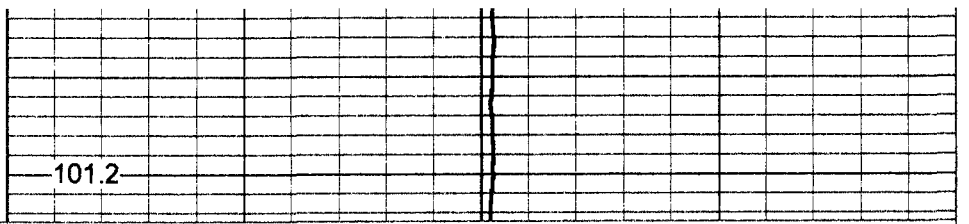
88.0

88.2

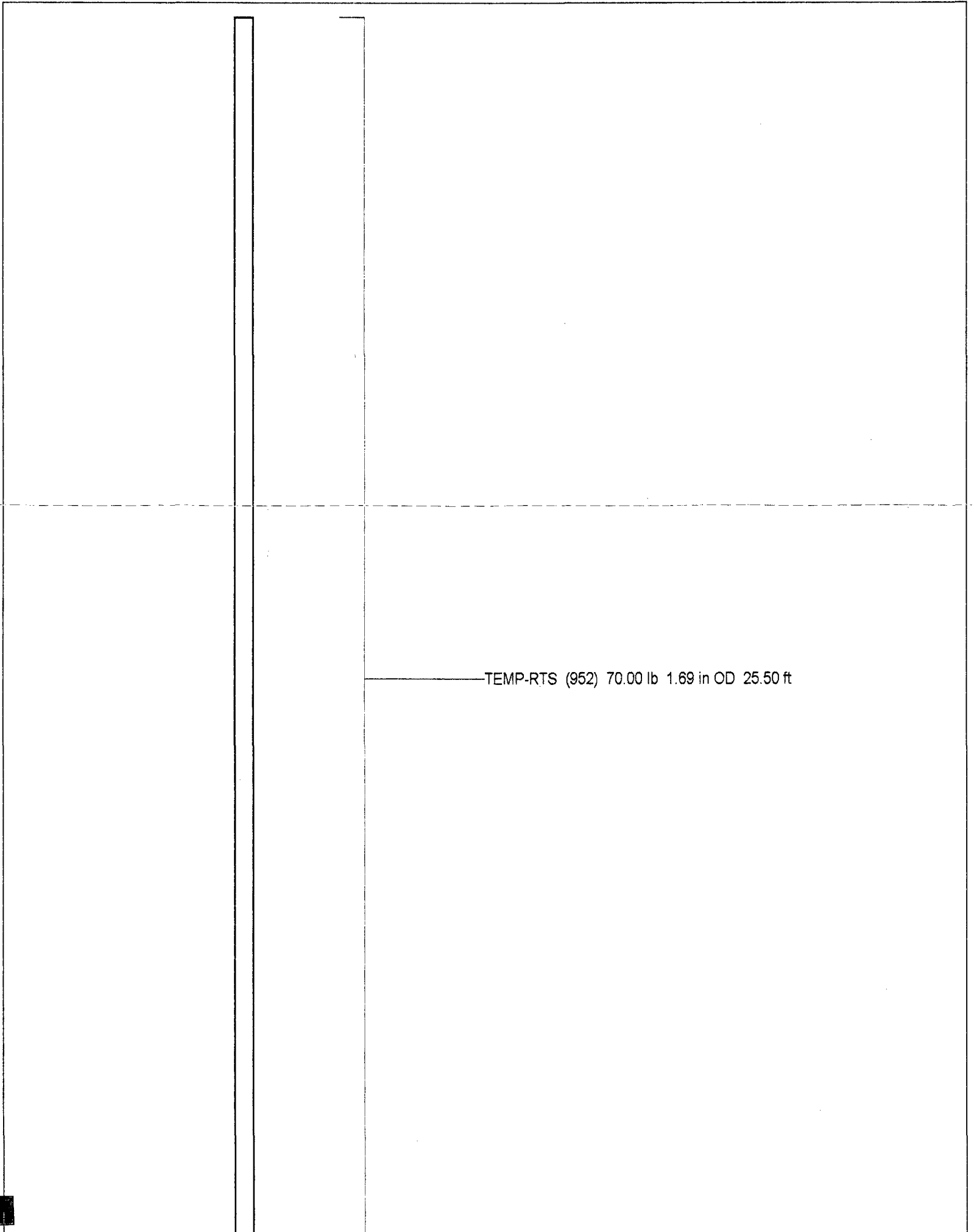




-0. DELTA TEMPERATURE (degF)0.5



50 101.2 150
TEMPERATURE (degF)



TEMP-RTS (952) 70.00 lb 1.69 in OD 25.50 ft

TEMP 0.10 ft

Dataset: run3/pass1
Total Length: 25.50 ft
Total Weight: 70.00 lb
O.D. 1.69 in

Temperature Calibration Report

Serial Number: 952
Tool Model: RTS
Performed: Mon Jan 21 15:53:43 2002

Point #	Reading		Reference	
1	558.592	cps	35	degF
2	1045.12	cps	78	degF
3	1582.43	cps	128	degF