



**FLUID
CONDUCTIVITY
TEMPERATURE
LOG**

Company **CH2M HILL**
 Well **IMMOKALEE IW-1**
 Field **IMMOKALEE W.W.T.P.**
 County **COLLIER** State **FL**

Location	Permanent Datum	Elevation	Other Services SEE COMMENTS
	Log Measured From		
	Drilling Measured From		
		Elevation	K.B. D.F. G.L.

Company **CH2M HILL**
 Well **IMMOKALEE IW-1**
 Field **IMMOKALEE W.W.T.P.**
 County **COLLIER**
 State/Prv **FL**

Date	29-NOV-2001		
Run Number	Bit	Top	Bottom
Depth Driller	12.25"	SURFACE	310'
Depth Logger	42"	SURFACE	279'
Bottom Logged Interval	12.25"	CASING	1011'
Top Log Interval	28.5"	CASING	2005'
Open Hole Size			
Type Fluid			
Density / Viscosity			
Max. Recorded Temp.			
Estimated Cement Top			
Time Well Ready			
Time Logged on Bottom			
Equipment Number			
Location			
Recorded By			
Witnessed By			

Borehole Record		Borehole Record	
Run Number	Bit	Top	Bottom
ONE	12.25"	SURFACE	310'
TWO	42"	SURFACE	279'
THREE	12.25"	CASING	1011'
SEVEN	28.5"	CASING	2005'
Casing Record	Size	Wgt/Ft	Bottom
Casing Record	36"	375 W.T.	275'
Casing Record	30"	375 W.T.	930'
Casing Record	24"	375 W.T.	2000'

<< Fold Here >>

All interpretations are opinions based on inferences from electrical or other measurements and we cannot and do not guarantee the accuracy or correctness of any interpretation, and we shall not, except in the case of gross or willful negligence on our part, be liable or responsible for any loss, costs, damages, or expenses incurred or sustained by anyone resulting from any interpretation made by any of our officers, agents or employees. These interpretations are also subject to our general terms and conditions set out in our current Price Schedule.

Comments

OTHER SERVICES:
 DIL/LL3/SP
 BHC/VDL
 X-Y/GR
 FLOWMETER
 DHTVS

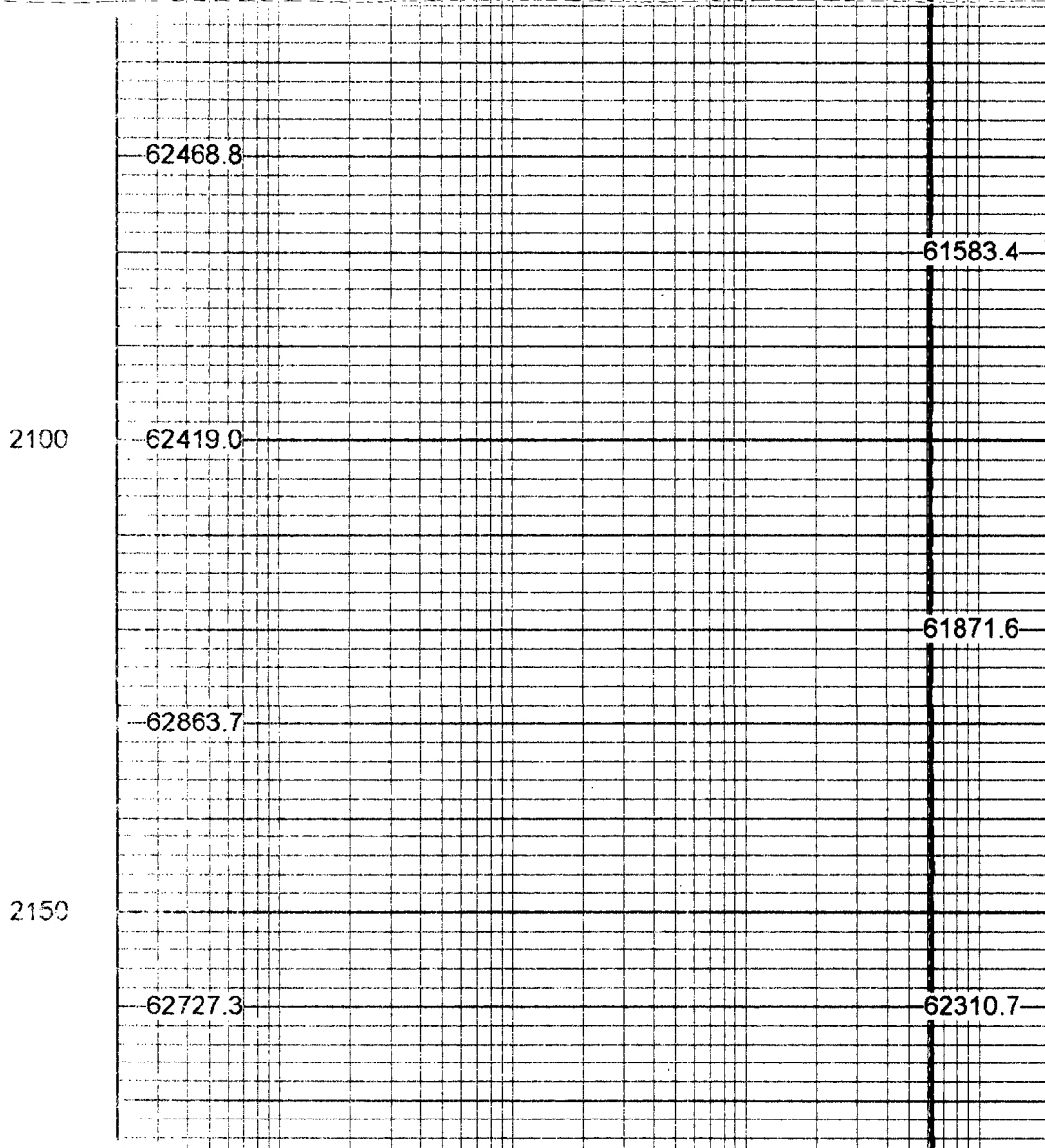
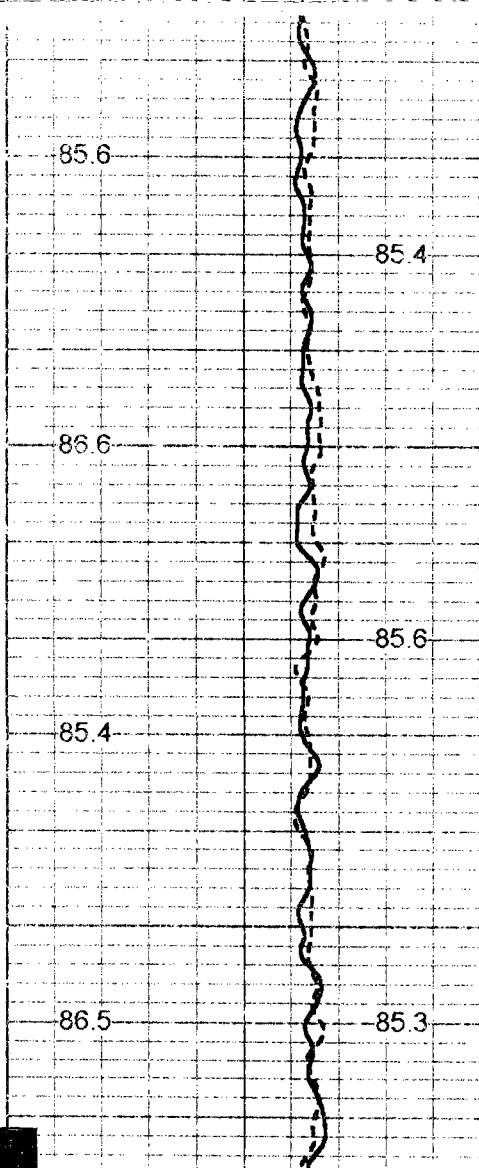
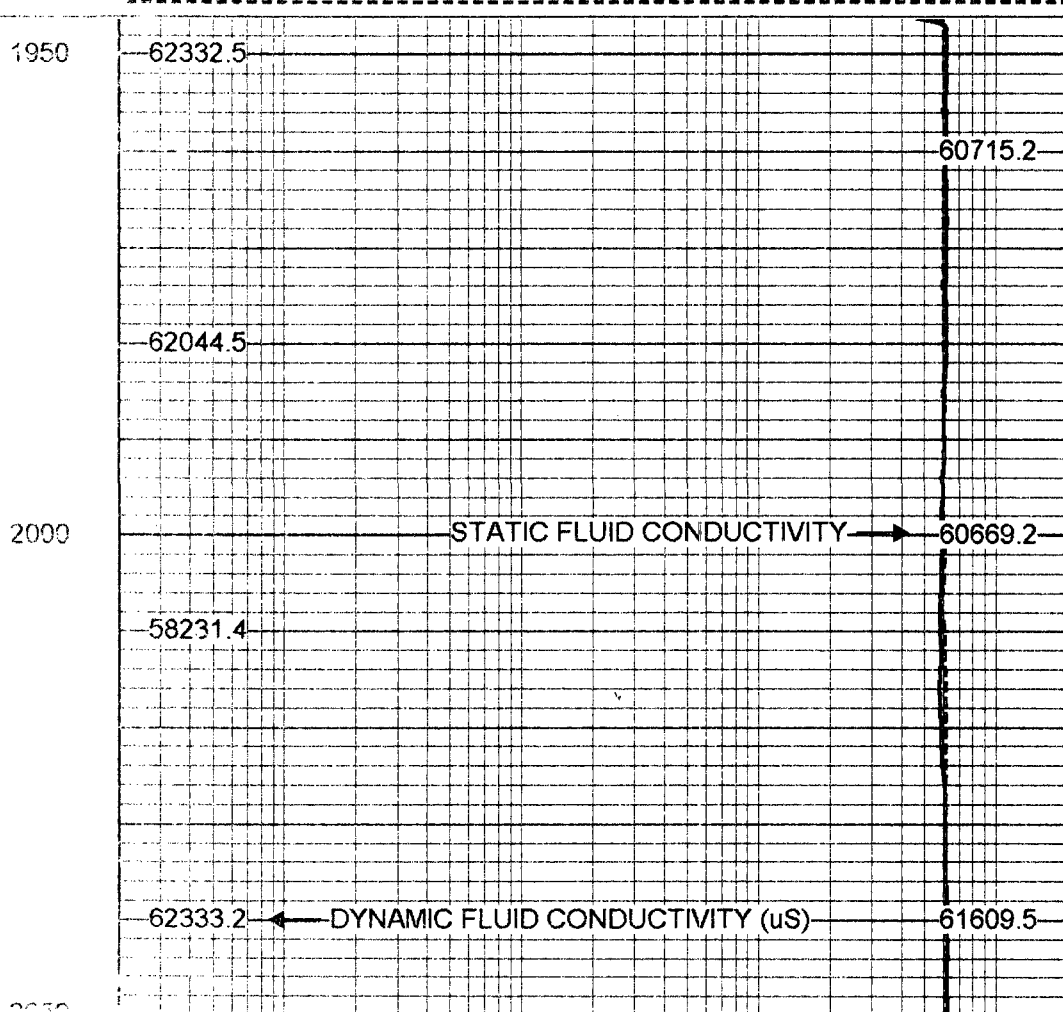
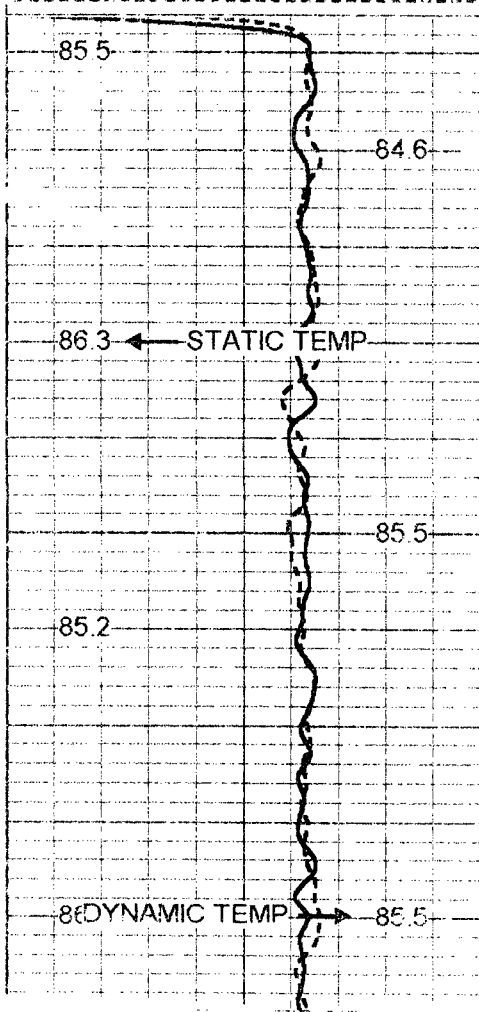


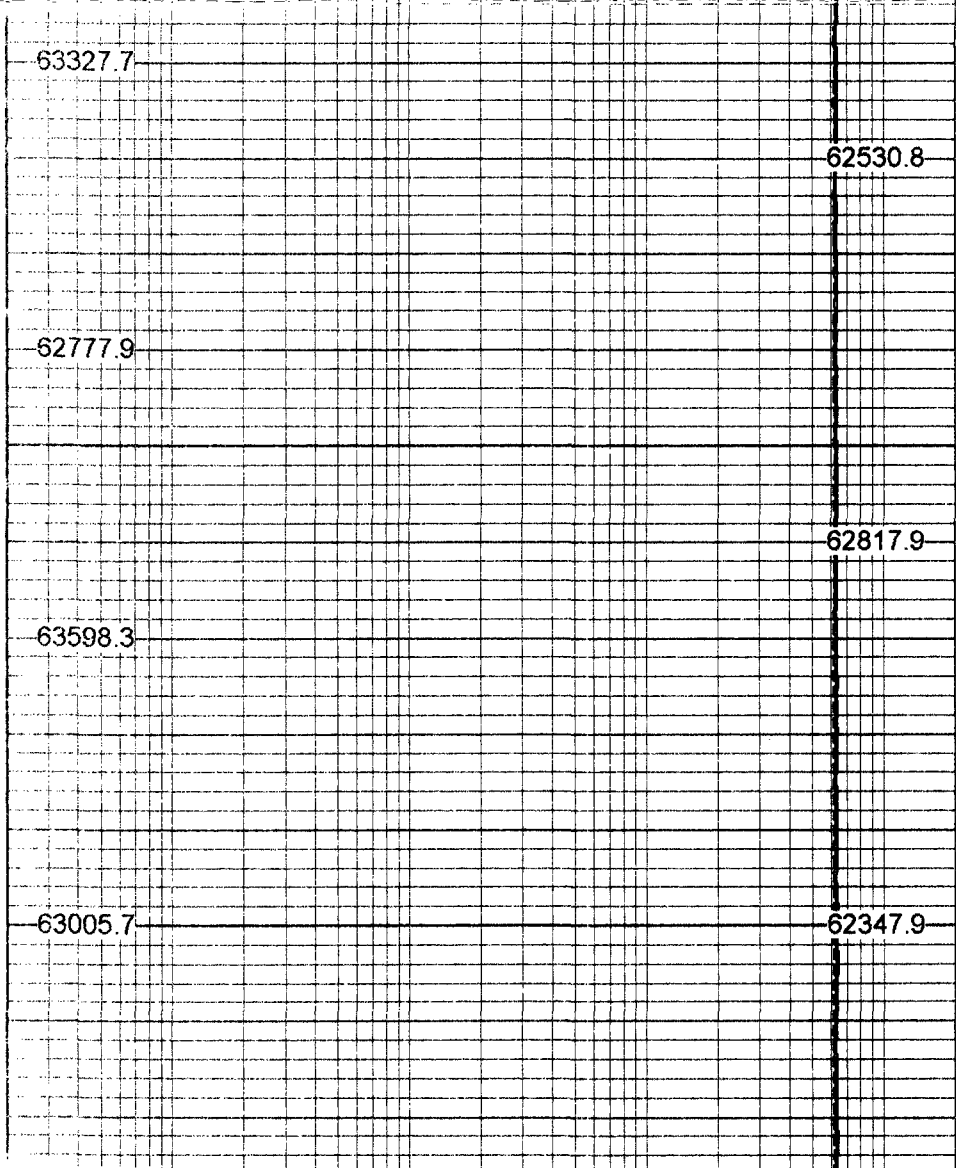
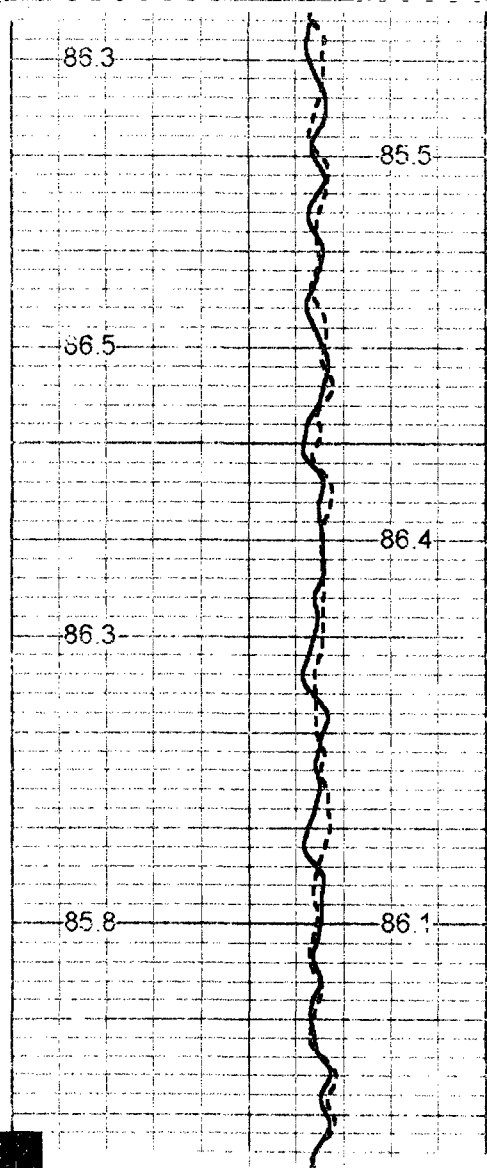
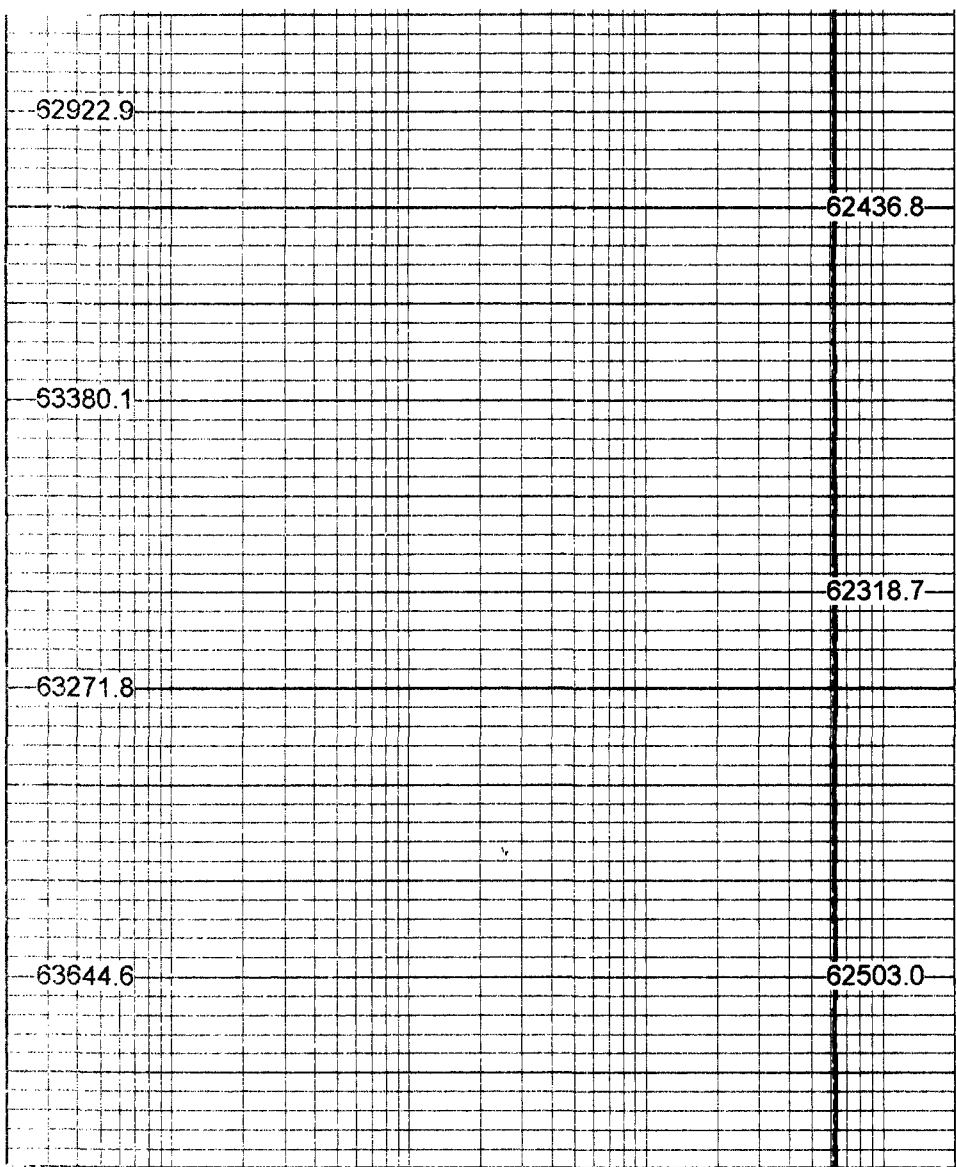
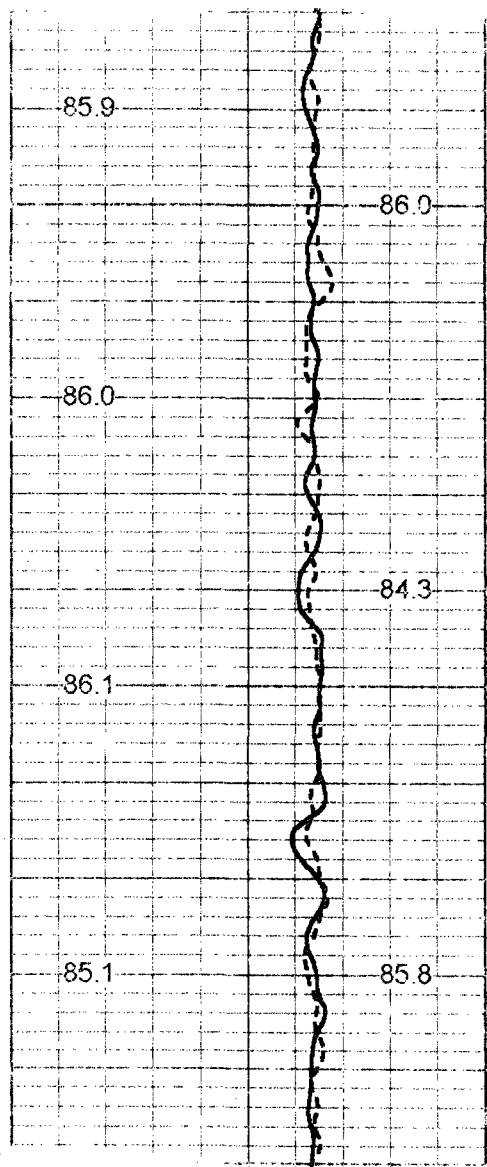
FLOWRATE = 534 GPM

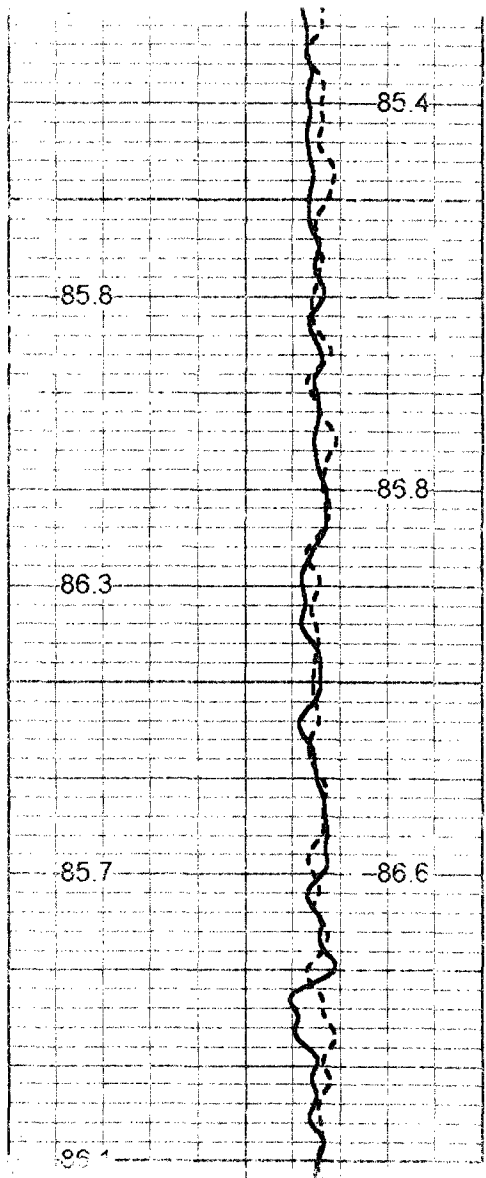
Database File: immokiw1.db
 Dataset Pathname: run11/FRT
 Description Format: f5.m

60 DYNAMIC TEMP (degF) 100
 60 STATIC TEMP (degF) 100

20 DYNAMIC FLUID CONDUCTIVITY (uS) 200000
 20 STATIC FLUID CONDUCTIVITY (uS) 200000



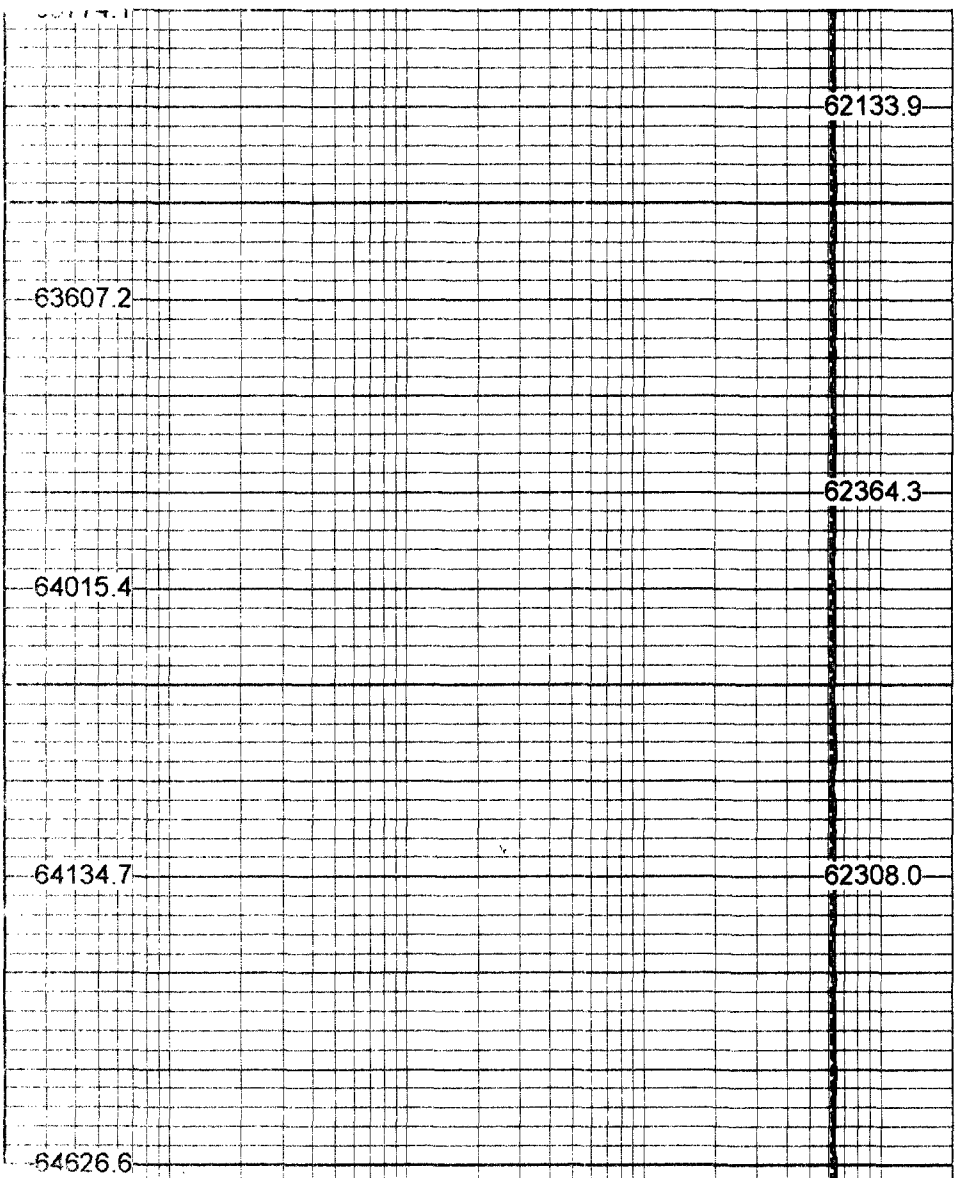




2450

2500

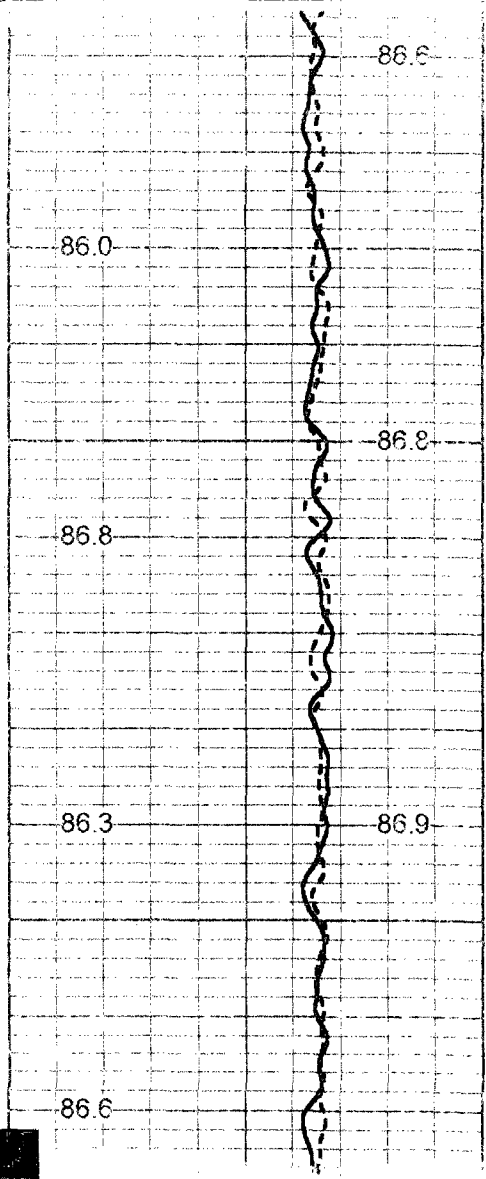
2550



62133.9

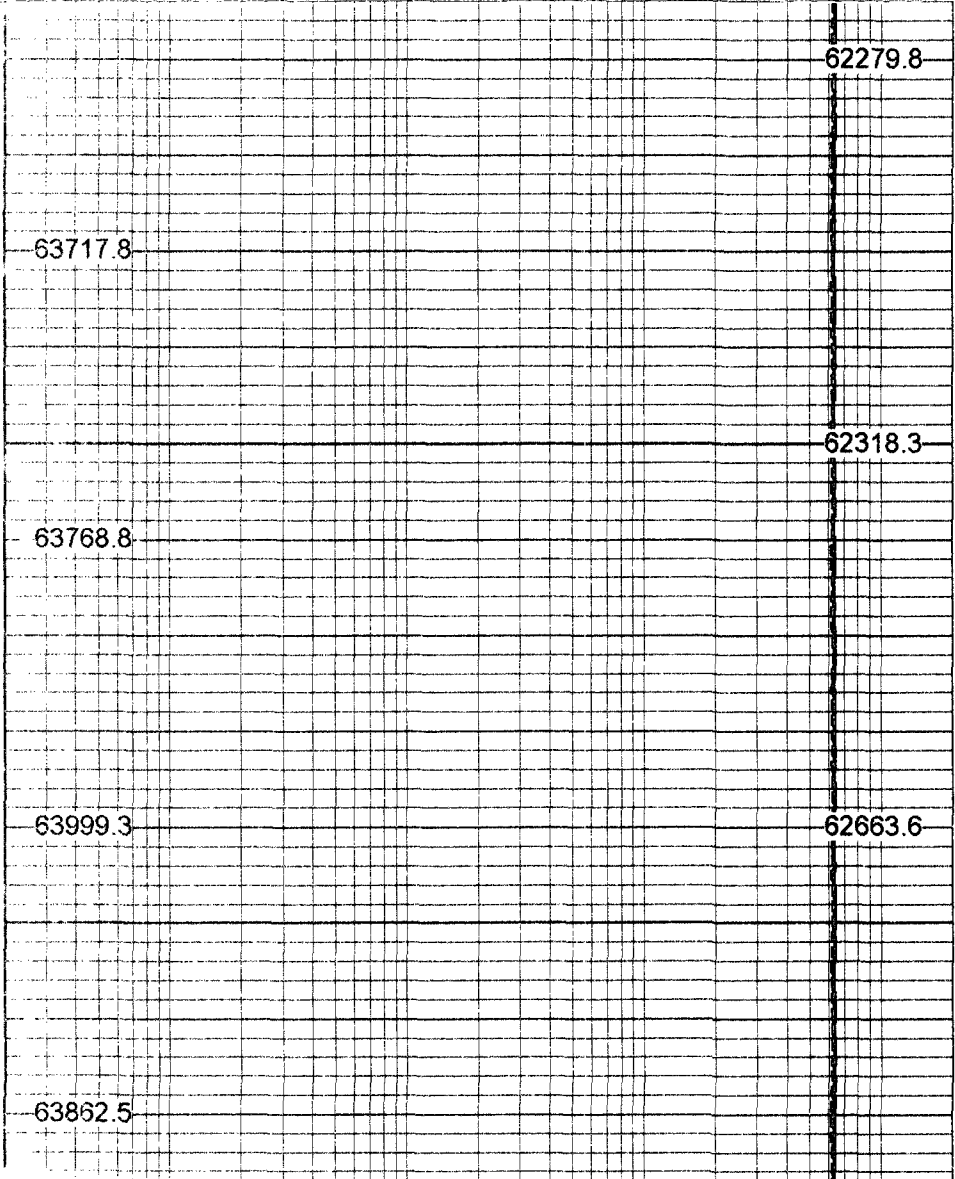
62364.3

62308.0



2600

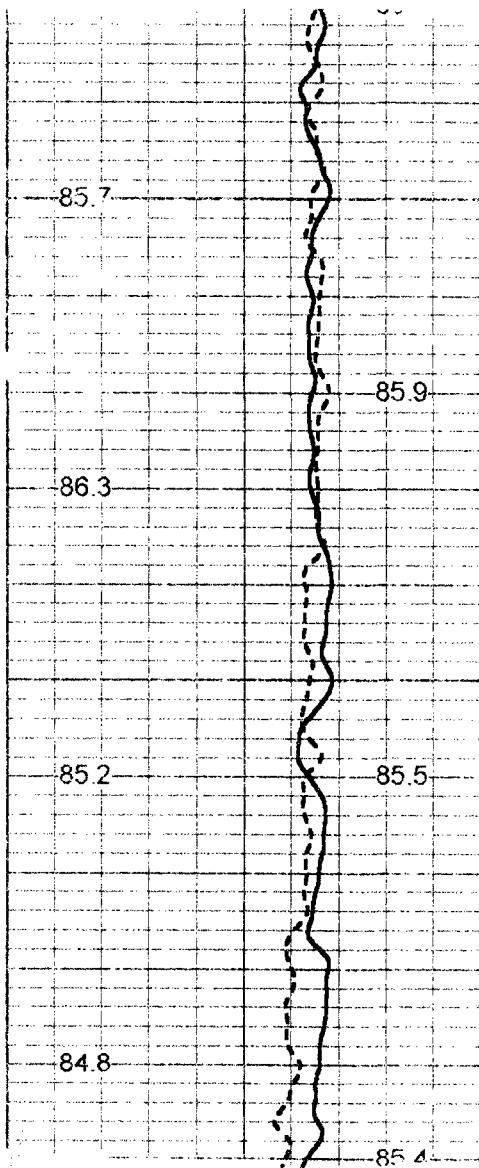
2650



62279.8

62318.3

62663.6



2700

63585.1

85.9

62803.2

86.3

63903.9

2750

85.2

85.5

64405.9

62770.2

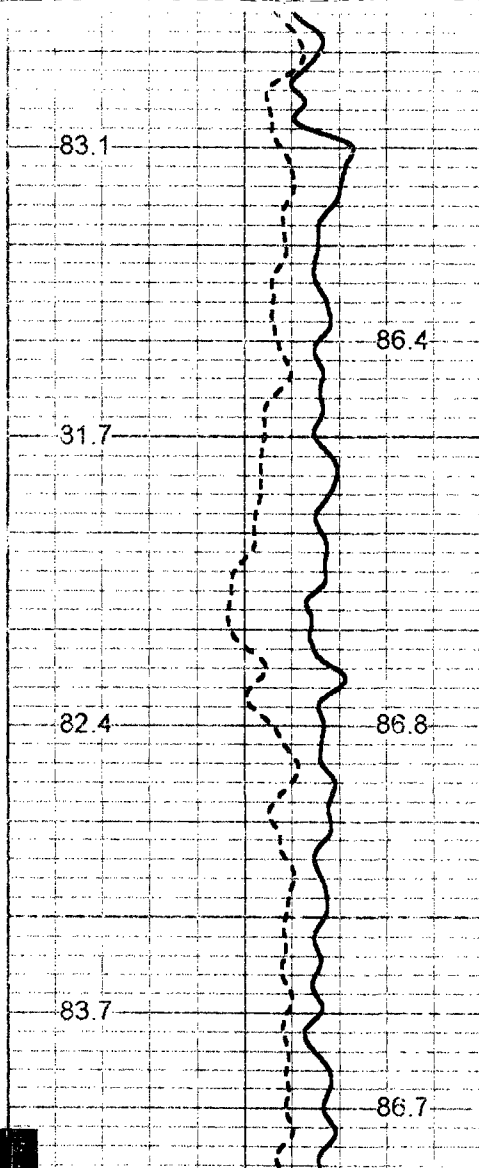
84.8

64135.9

2800

85.4

63164.3



83.1

65442.6

86.4

62952.5

31.7

2850

66077.0

82.4

86.8

65616.6

62962.5

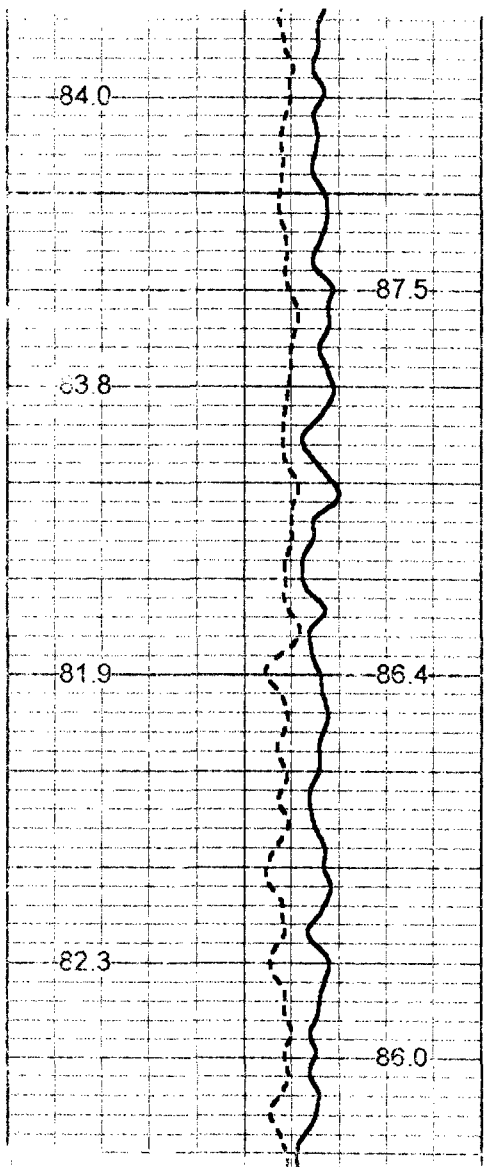
2900

83.7

65807.0

86.7

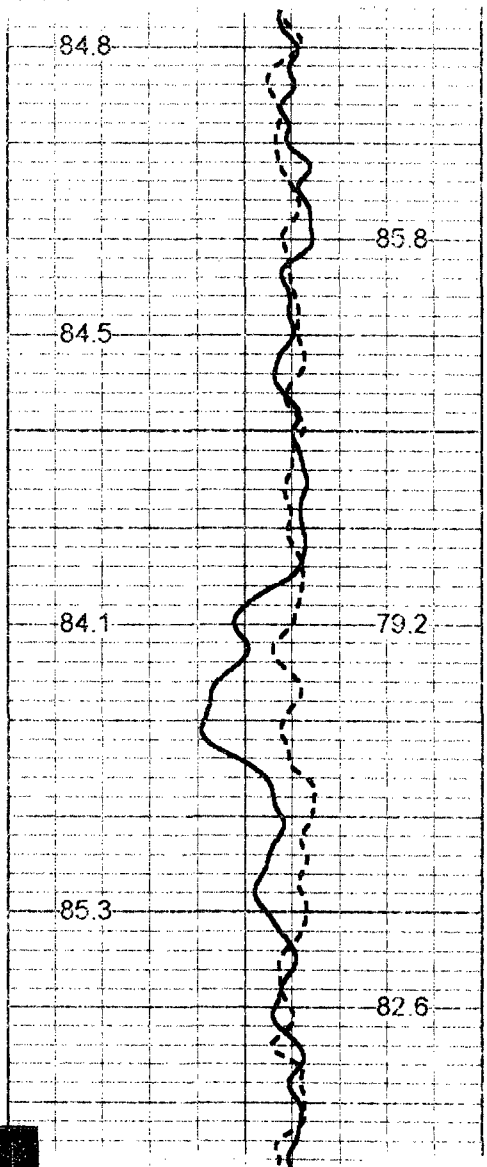
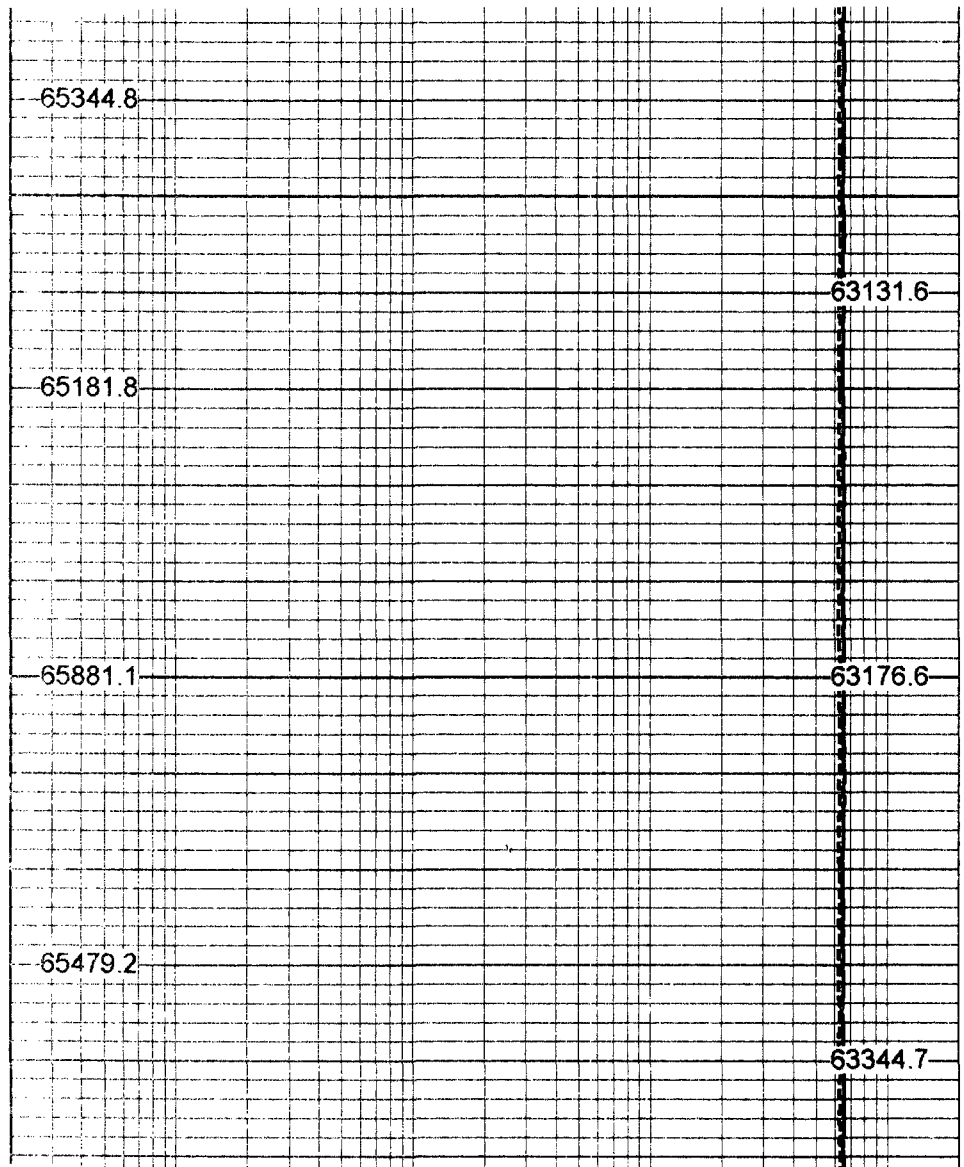
63568.0



2950

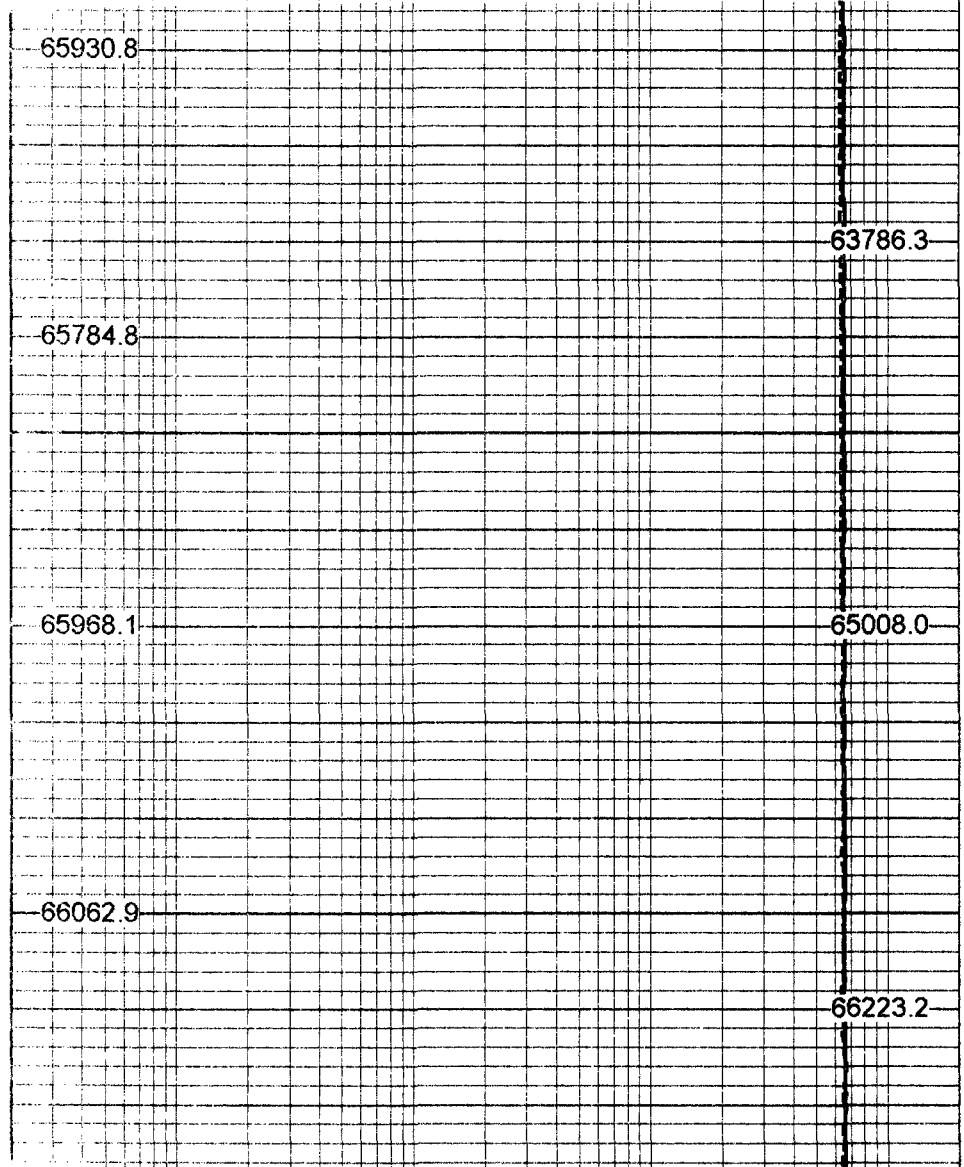
3000

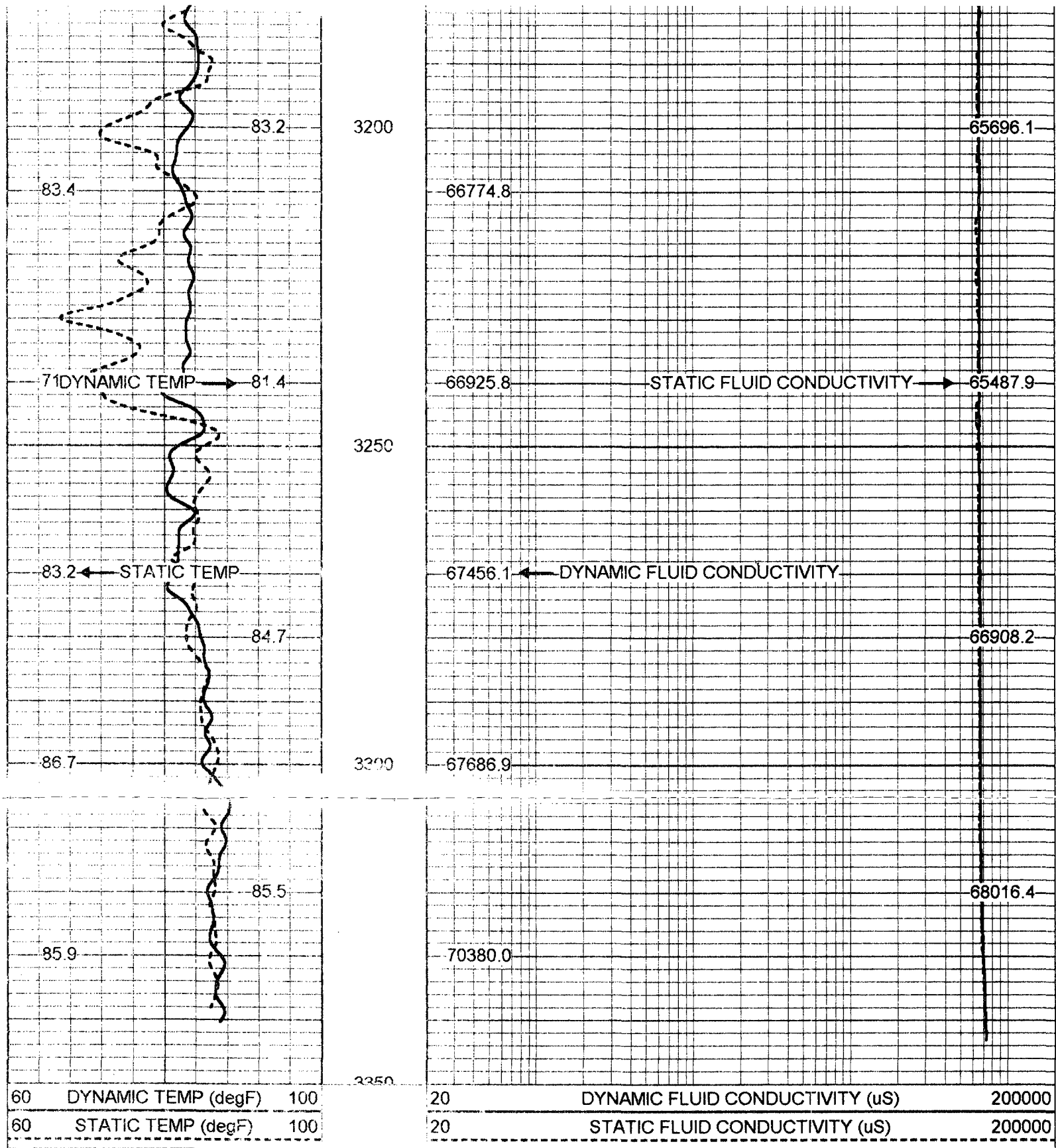
3050



3100

3150





60	DYNAMIC TEMP (degF)	100	20	DYNAMIC FLUID CONDUCTIVITY (uS)	200000
60	STATIC TEMP (degF)	100	20	STATIC FLUID CONDUCTIVITY (uS)	200000

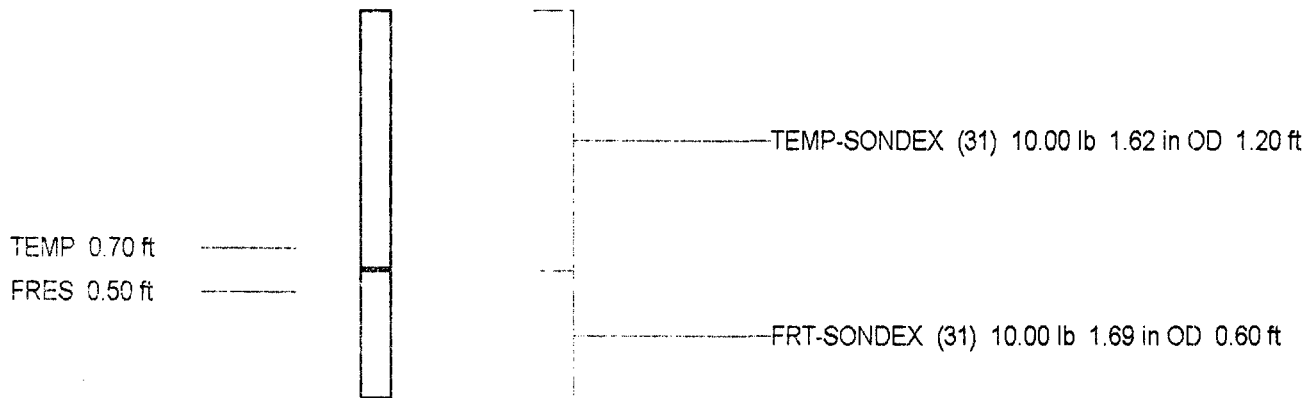
FRT Calibration Report

Serial Number: 31
 Tool Model: SONDEX
 Performed: Wed May 09 10:25:09 2001

Point #	Reading	Reference
1	0.000 cps	0.000
2	25.476 cps	500.000
3	31.707 cps	1000.000
4	205.970 cps	10000.000
5	1184.540 cps	50000.000
6		

Temperature Calibration Report

Point #	Reading		Reference	
1	0	cps	0	degF
2	120.679	cps	34	degF
3	582.95	cps	135	degF



Dataset: run11/FRT
Total Length: 1.80 ft
Total Weight: 20.00 lb
O.D.: 1.69 in