

**FLUID
CONDUCTIVITY
TEMPERATURE
LOG**

Company **CH2M HILL**
 Well **IMMOKALEE IW-1**
 Field **IMMOKALEE W.W.T.P.**
 County **COLLIER** State **FL**

D.E.P. - South District
 29 NOV 2001

Location	Elevation	Other Services SEE COMMENTS
Permanent Datum		
Log Measured From		K.B. D.F. G.L.
Drilling Measured From		

Date	29 NOV-2001
Run Number	ELEVEN
Depth Driller	3350'
Depth Logger	3350'
Bottom Logged Interval	3350'
Top Log Interval	CASING
Open Hole Size	12.25"
Type Fluid	WATER
Density / Viscosity	N/A
Max. Recorded Temp.	89 DEG F
Estimated Cement Top	N/A
Time Well Ready	0000
Time Logger on Bottom	0000
Equipment Number	102
Location	FT MYERS
Recorded By	LEE
Witnessed By	T. LEVI

Run Number	Borehole Record		Run Number	Borehole Record	
	Bit	Top		Bit	Top
ONE	12.25"	SURFACE	ELEVEN	12.25"	3350'
TWO	42"	SURFACE	ELEVEN	20.50"	2915'
THREE	12.25"	CASING			2915'
SEVEN	28.5"	CASING			

Run Number	Size	Wgt/Ft	Bottom
Casing Record	26"		375 W.T.
Casing Record	30"		375 W.T.
Casing Record	22"		375 W.T.

<< Find Here >>

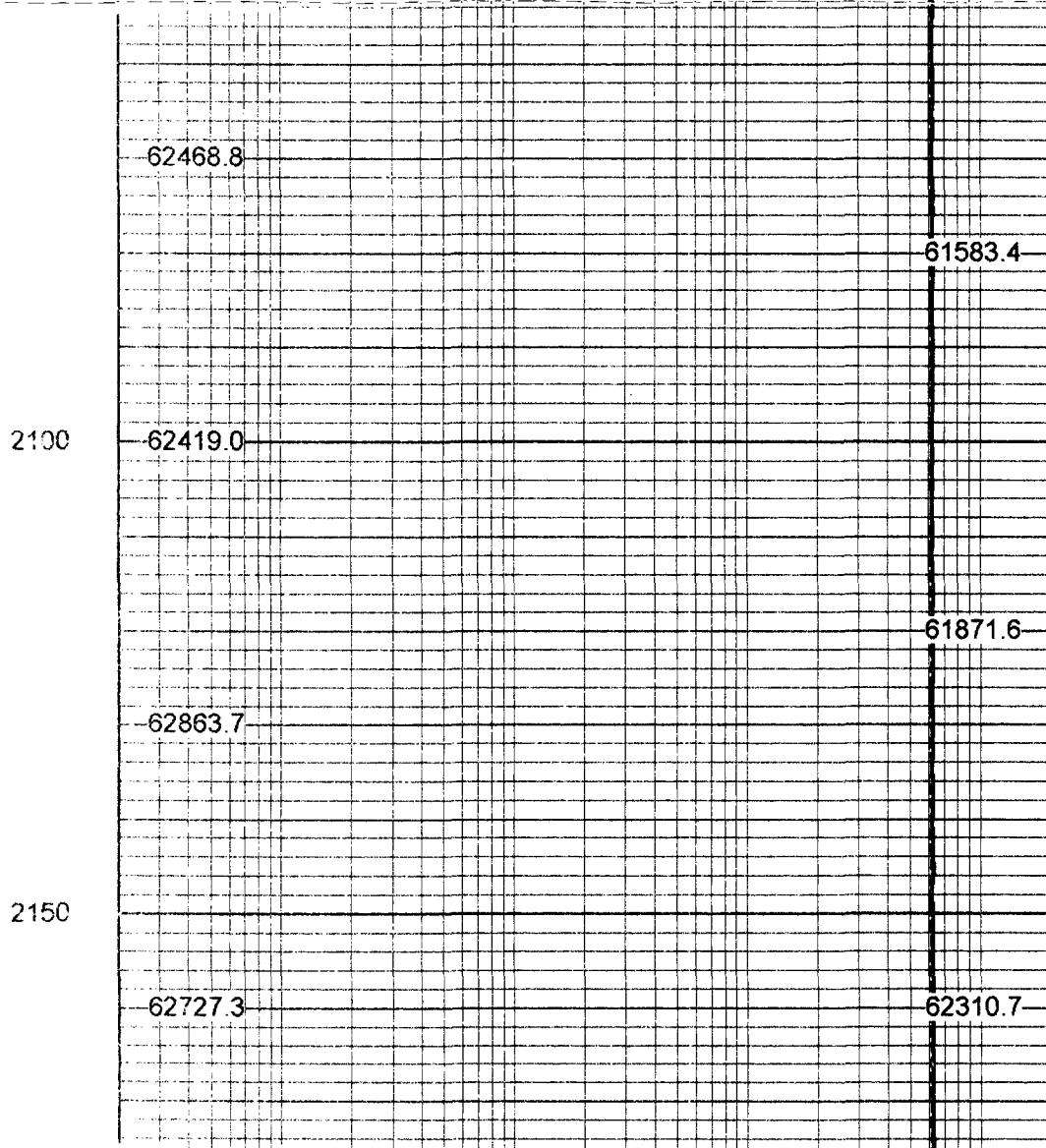
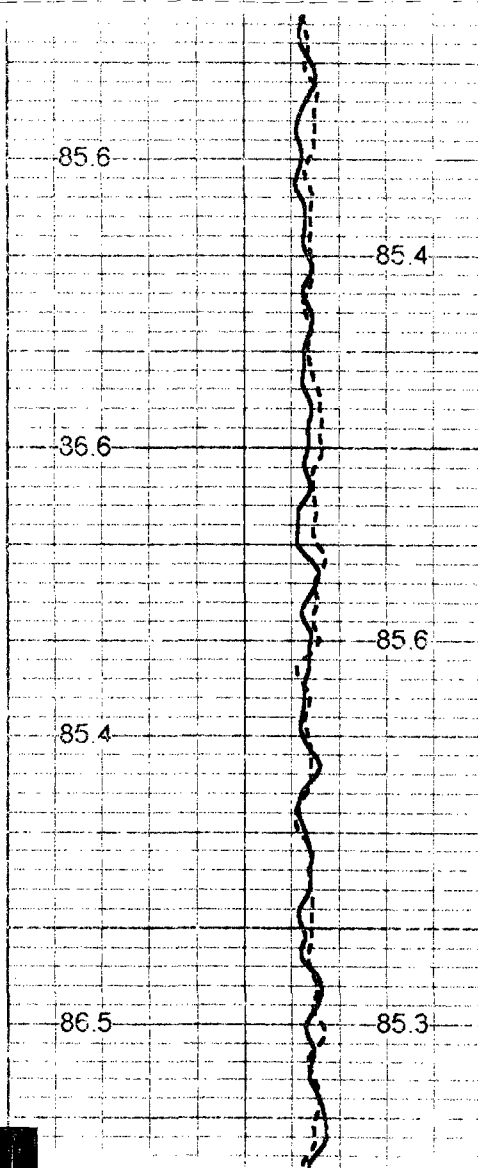
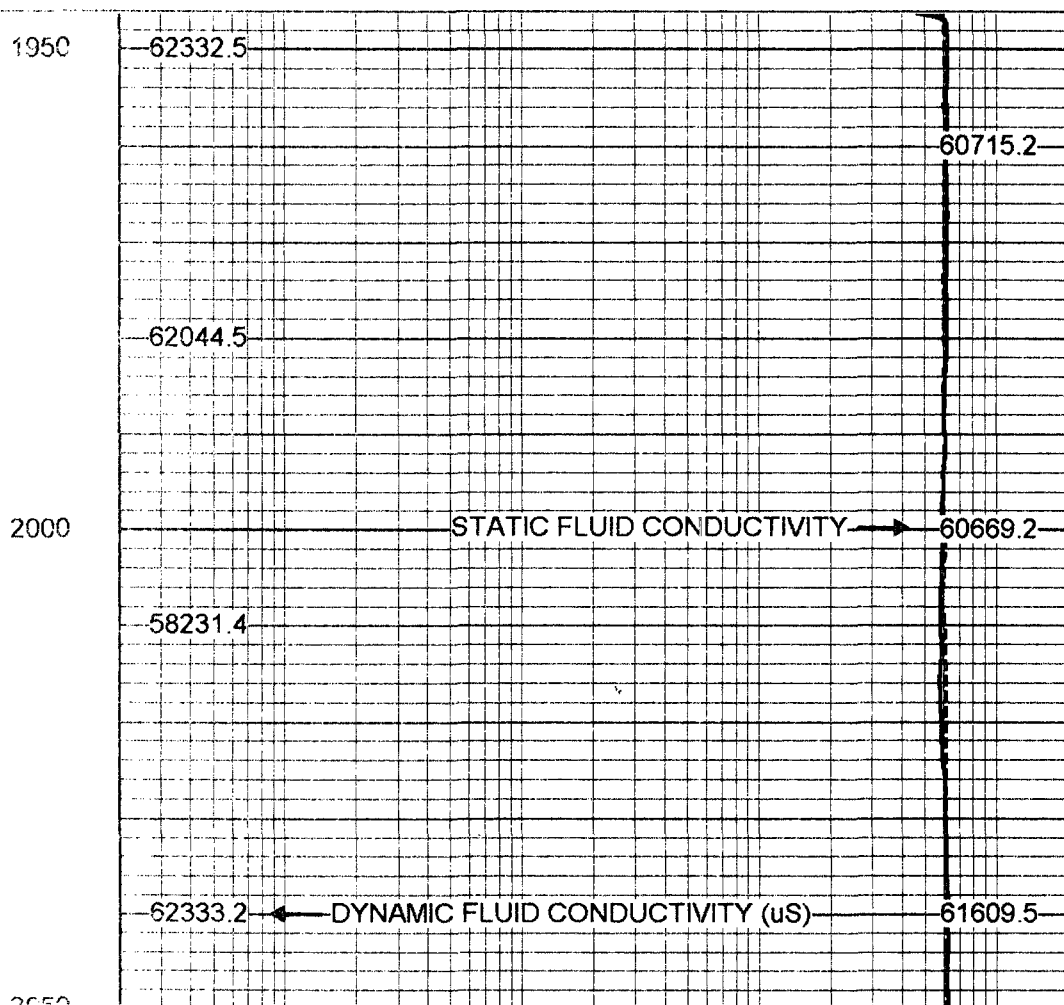
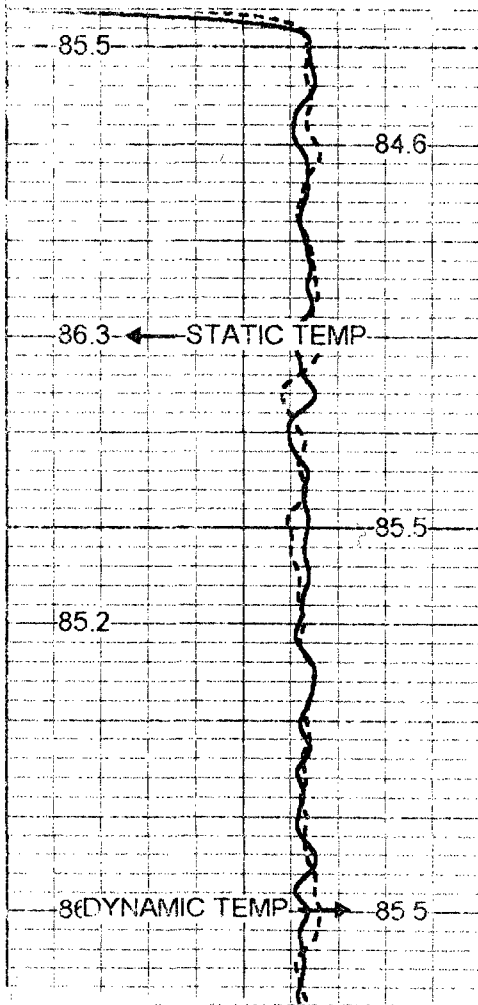
All interpretations are opinions based on inferences from electrical or other measurements and we cannot and do not guarantee the accuracy or correctness of any interpretation, and we shall not, except in the case of gross or willful negligence on our part, be liable or responsible for any loss, costs, damages, or expenses incurred or sustained by anyone resulting from any interpretation made by any of our officers, agents or employees. These interpretations are also subject to our general terms and conditions set out in our current Price Schedule.

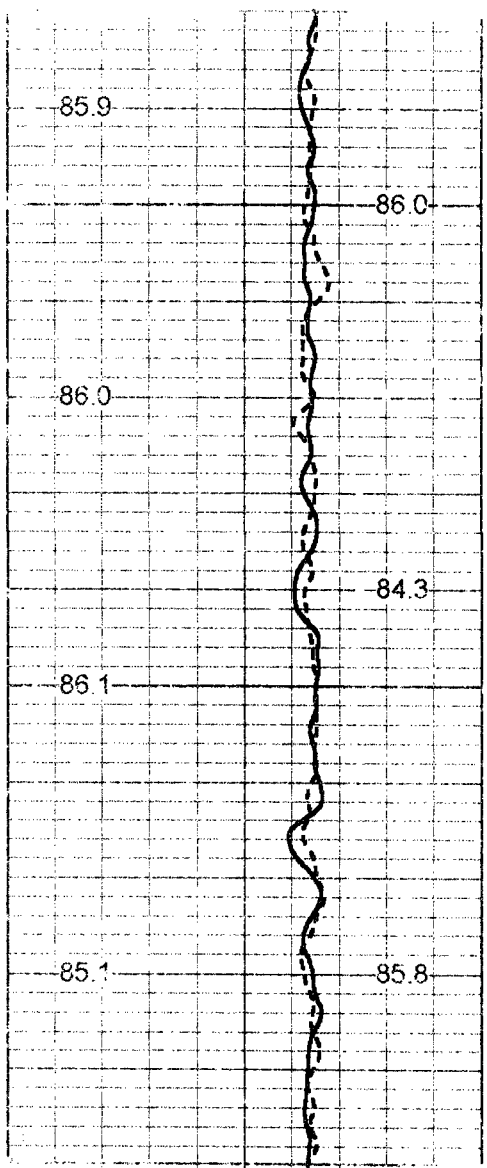
Comments

OTHER SERVICES:
 DIL/LL3/SP
 BHC/VDL
 X-Y/GR
 FLOWMETER
 DHTVS

60 DYNAMIC TEMP (degF) 100
 60 STATIC TEMP (degF) 100

20 DYNAMIC FLUID CONDUCTIVITY (uS) 200000
 20 STATIC FLUID CONDUCTIVITY (uS) 200000

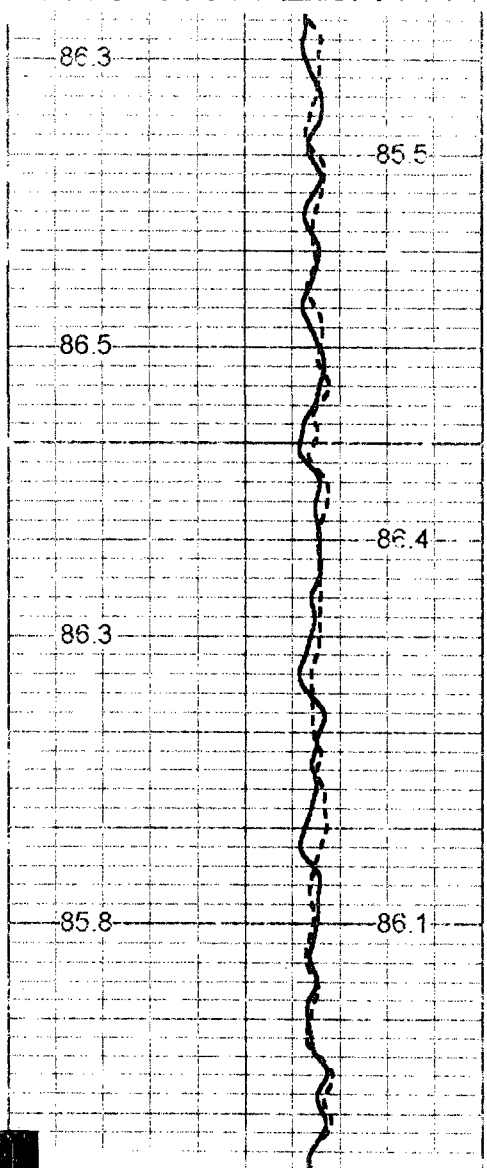
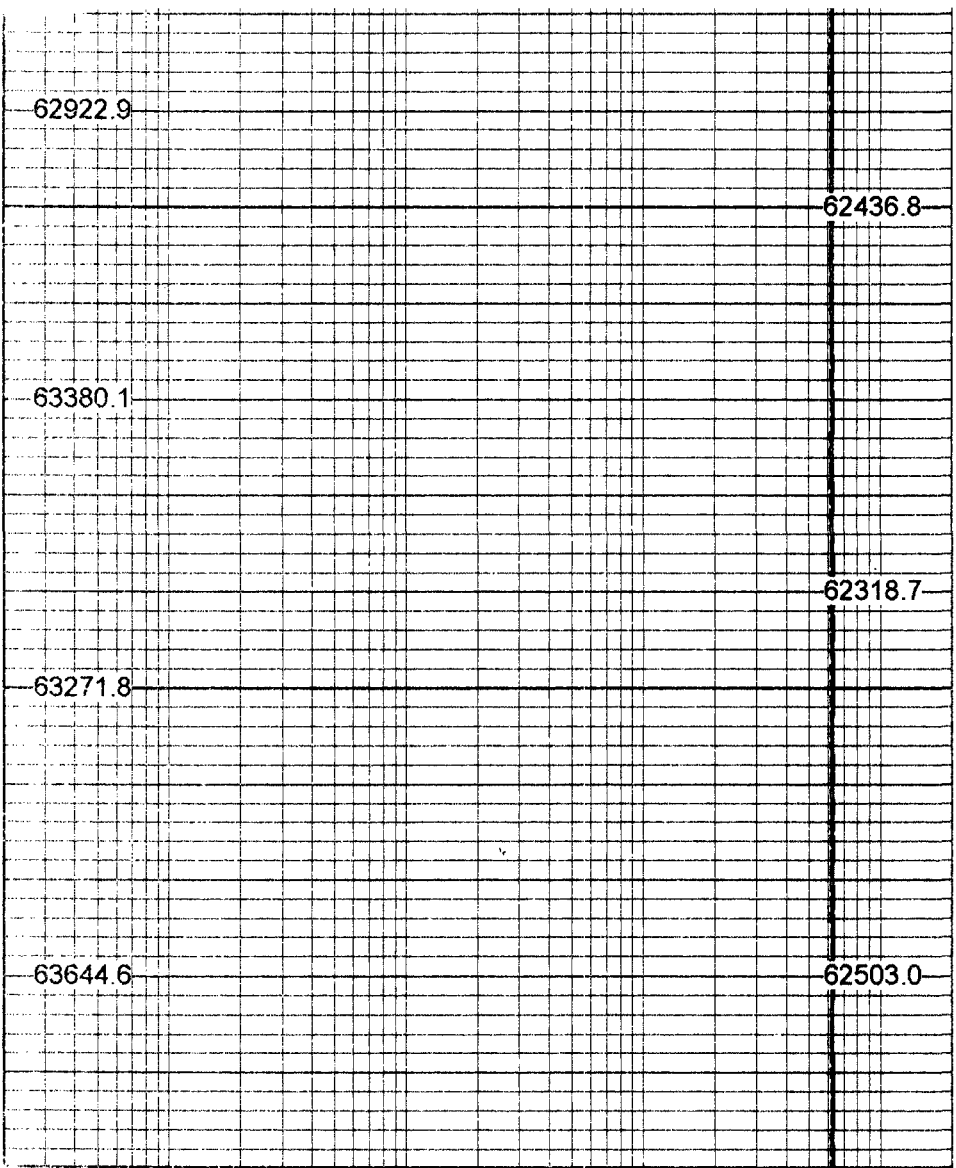




2200

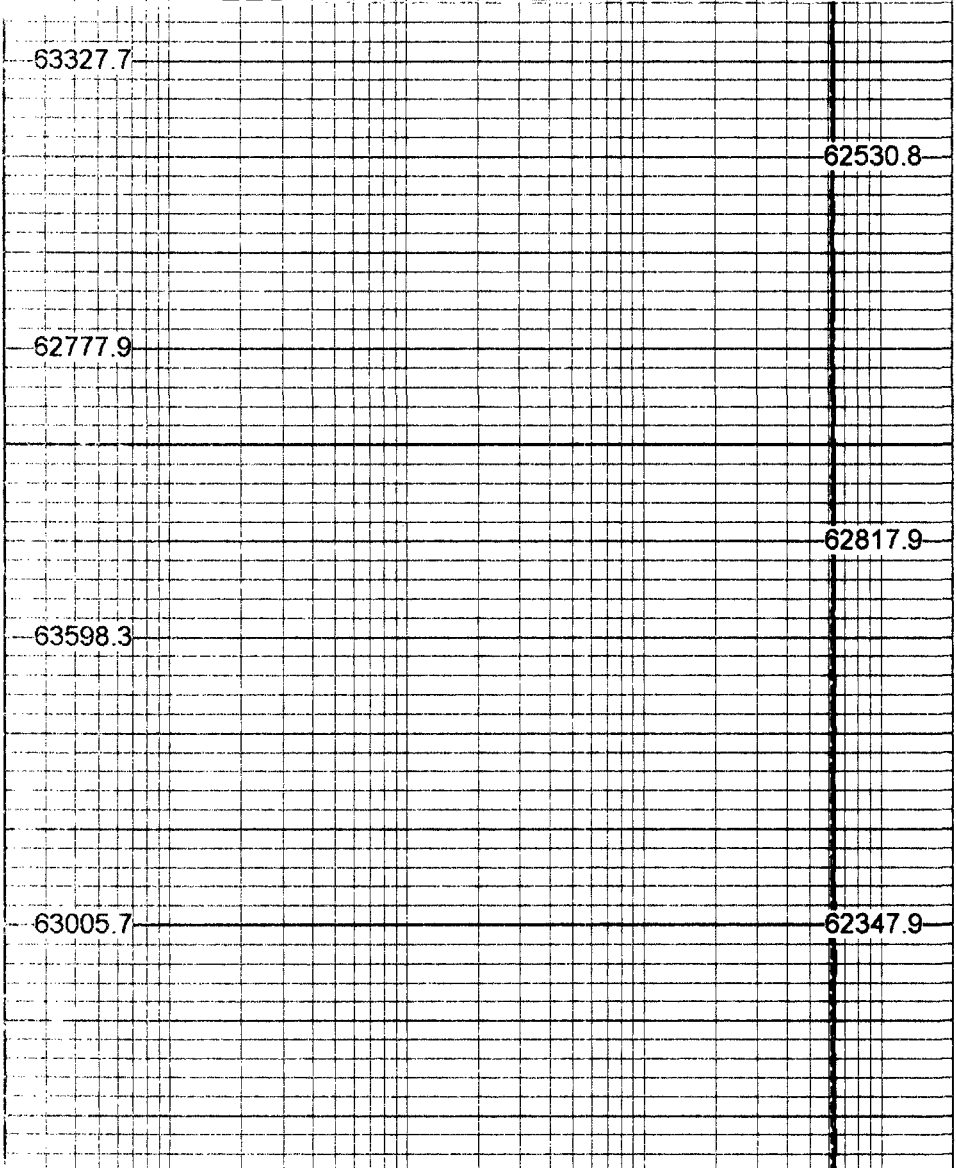
2250

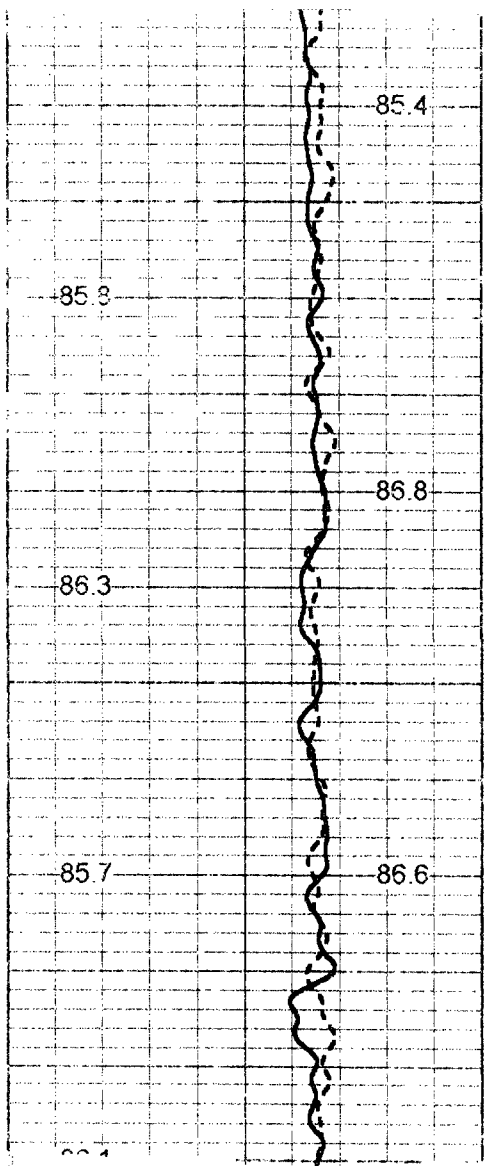
2300



2350

2400

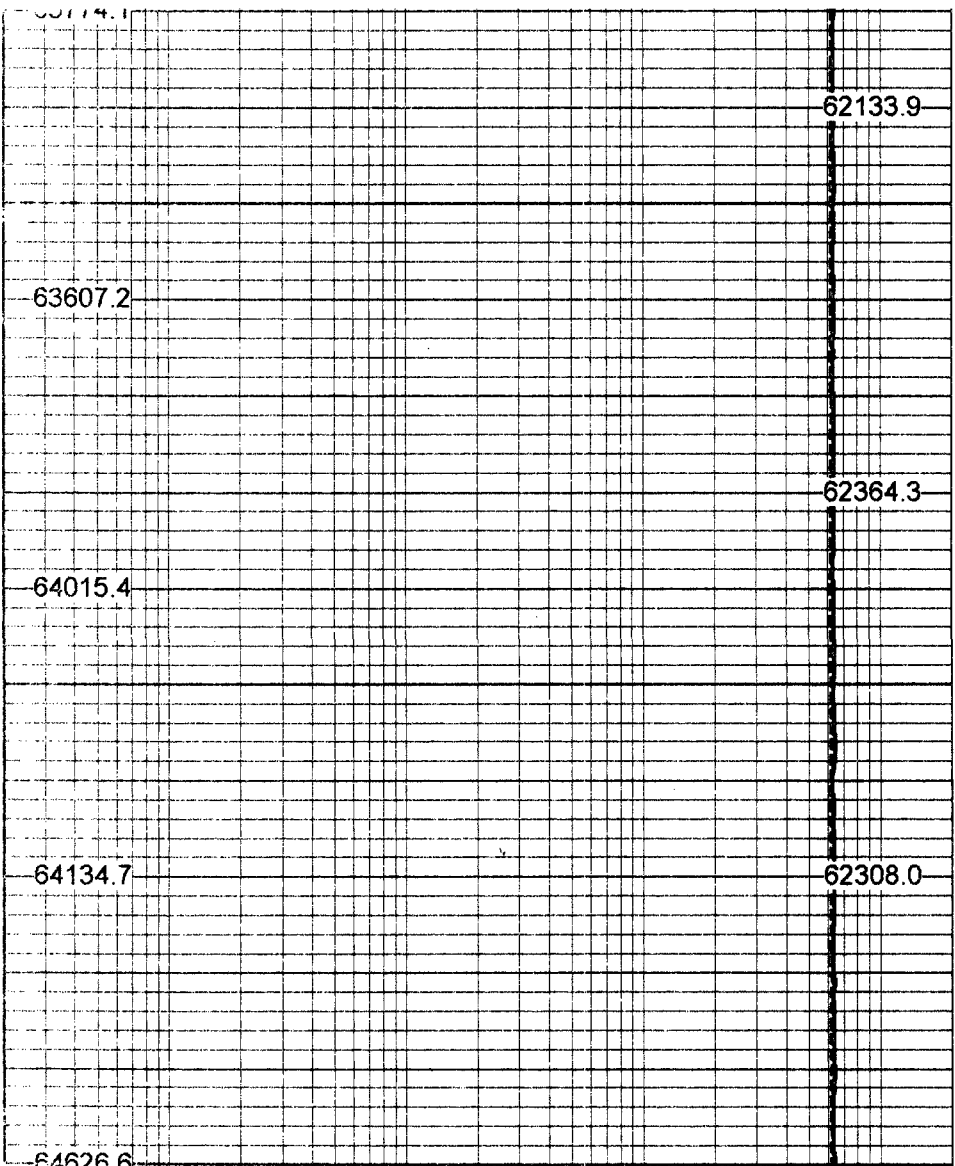




2450

2500

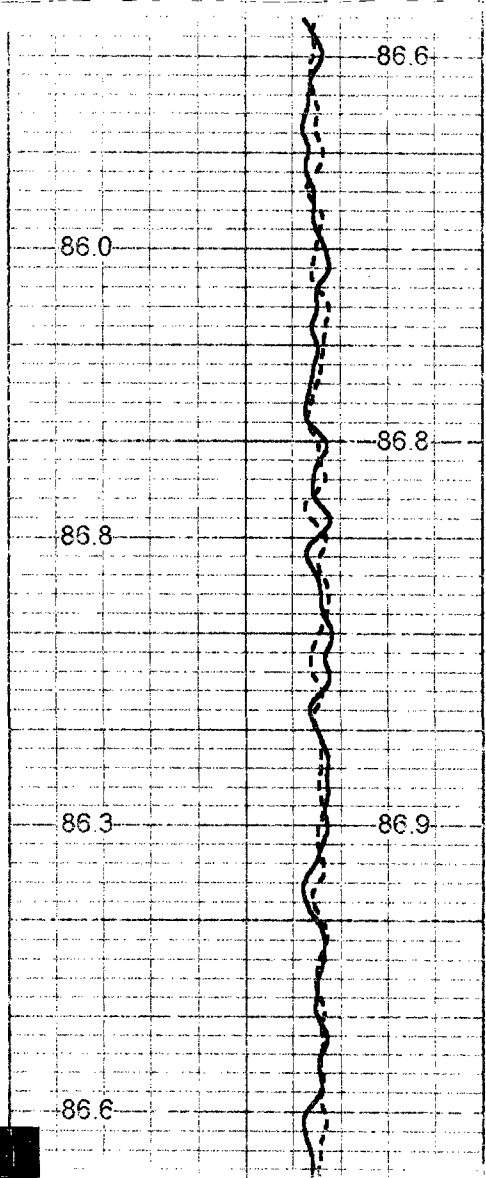
2550



62133.9

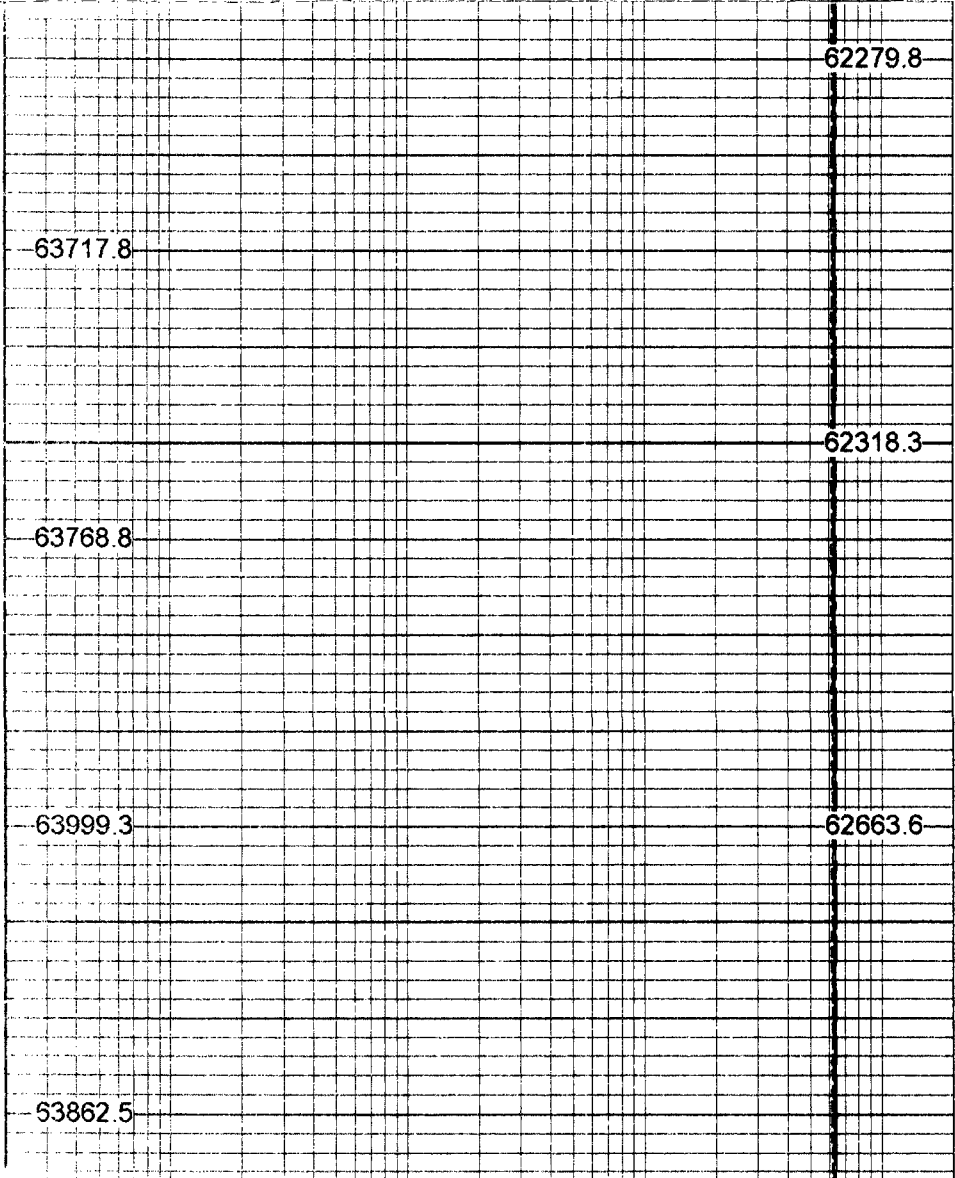
62364.3

62308.0



2600

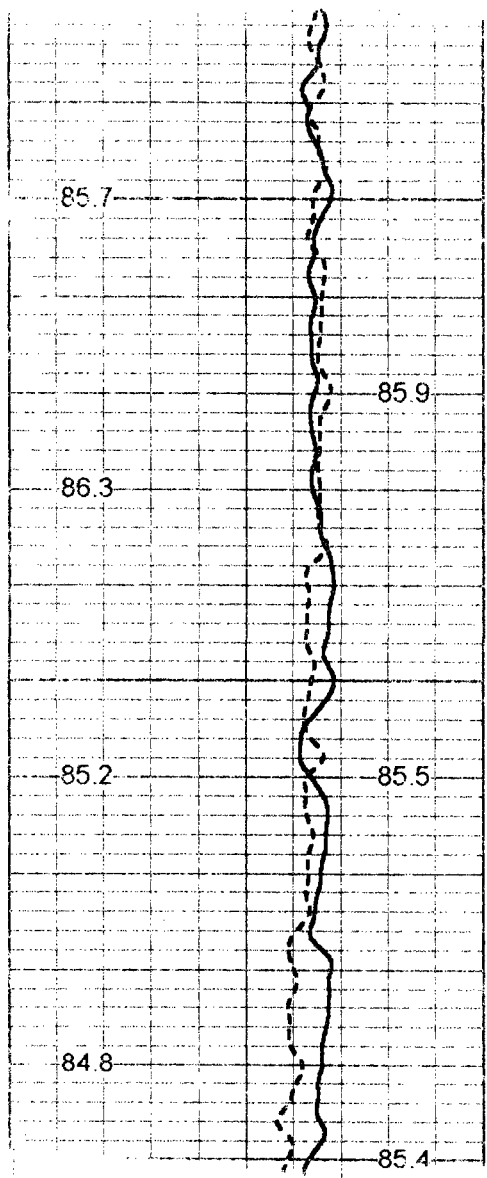
2650



62279.8

62318.3

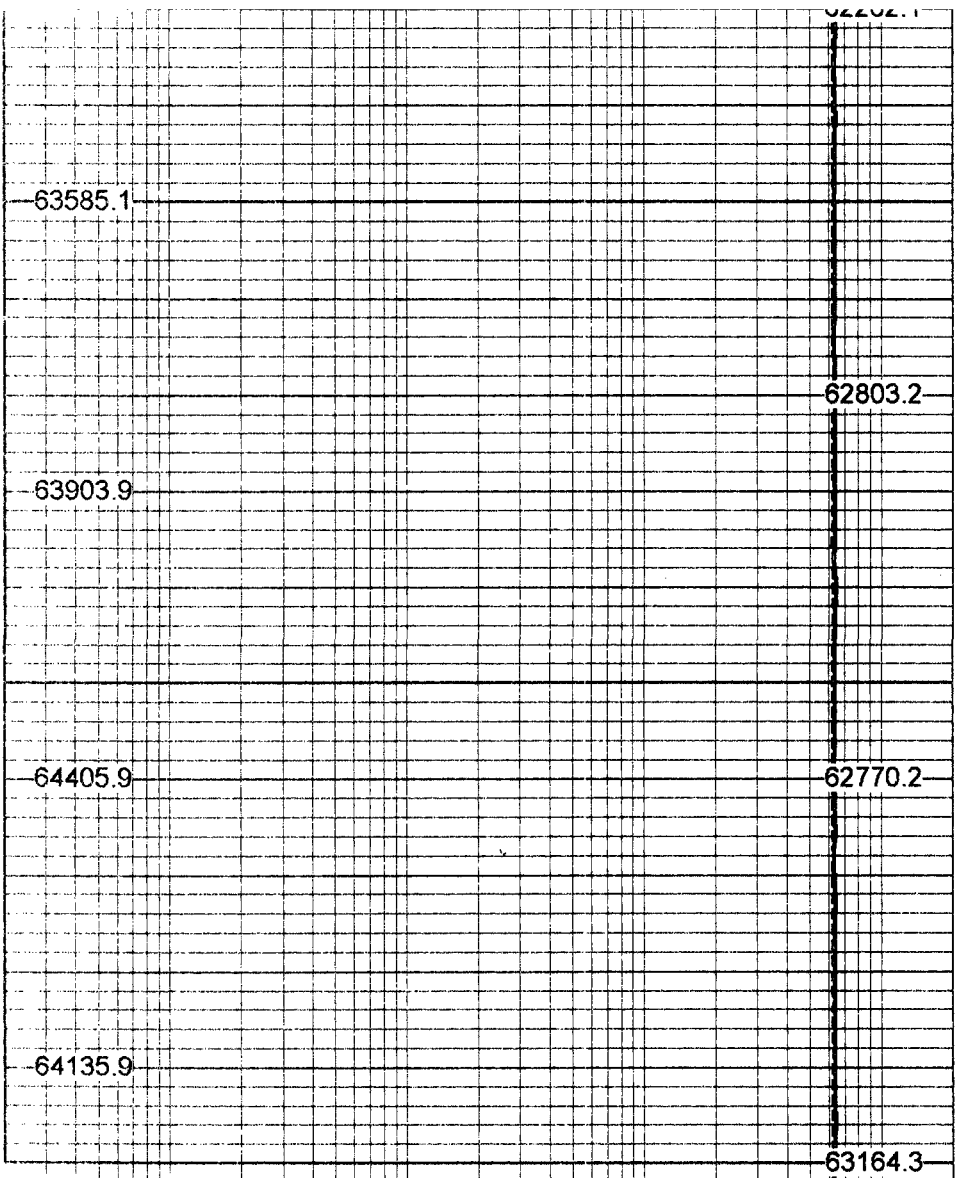
62663.6



2700

2750

2800



63585.1

63903.9

64405.9

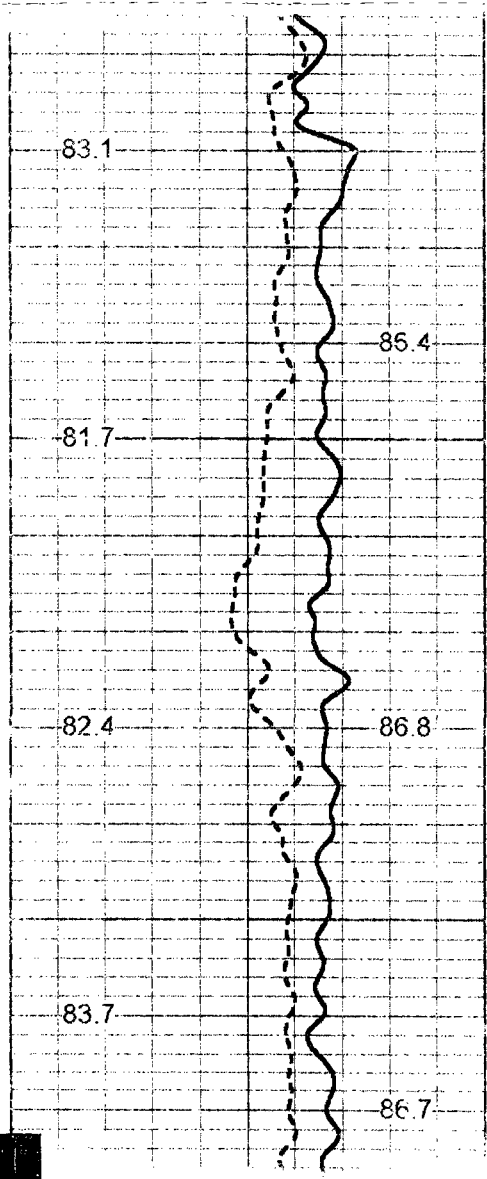
64135.9

63164.3

62803.2

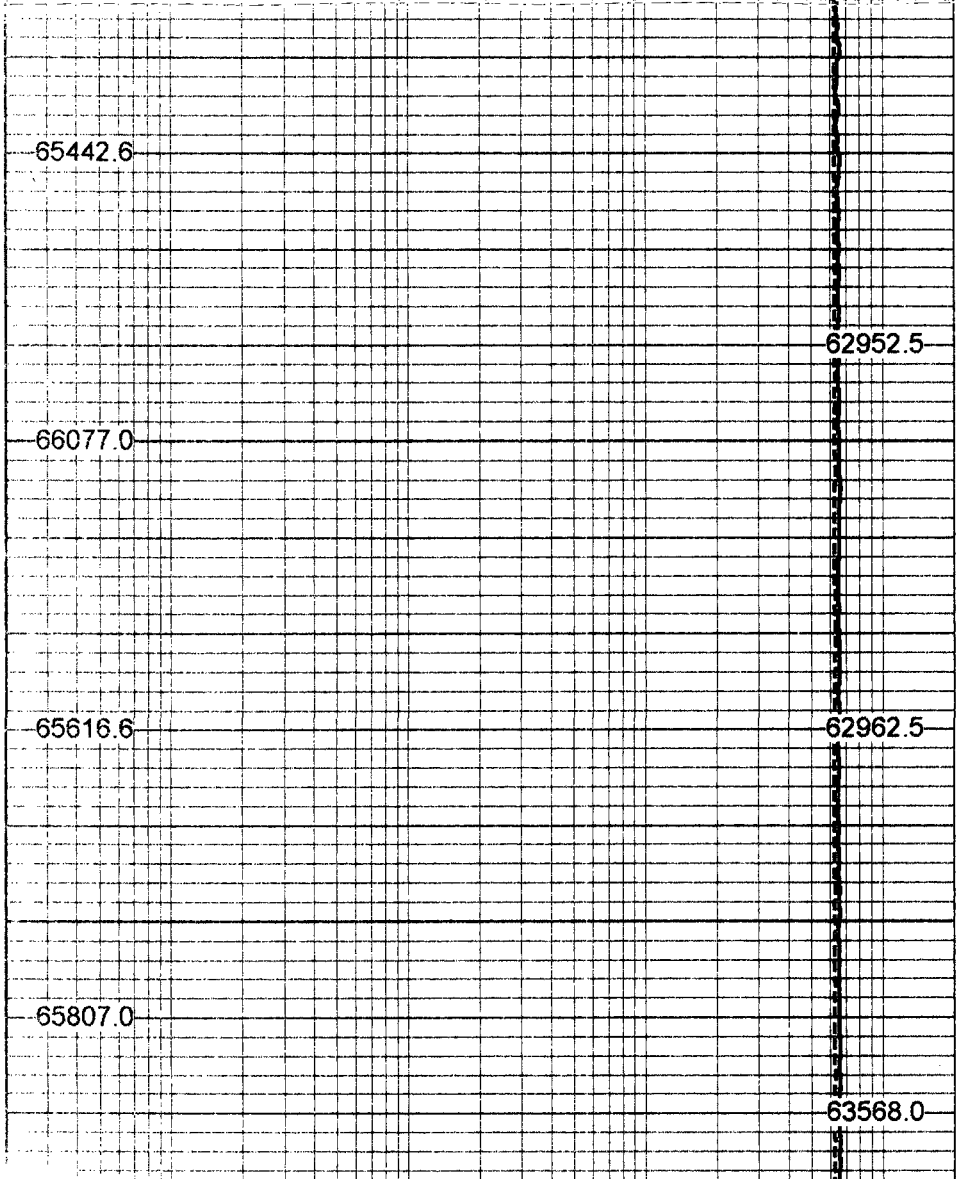
62770.2

63164.3



2850

2900



65442.6

66077.0

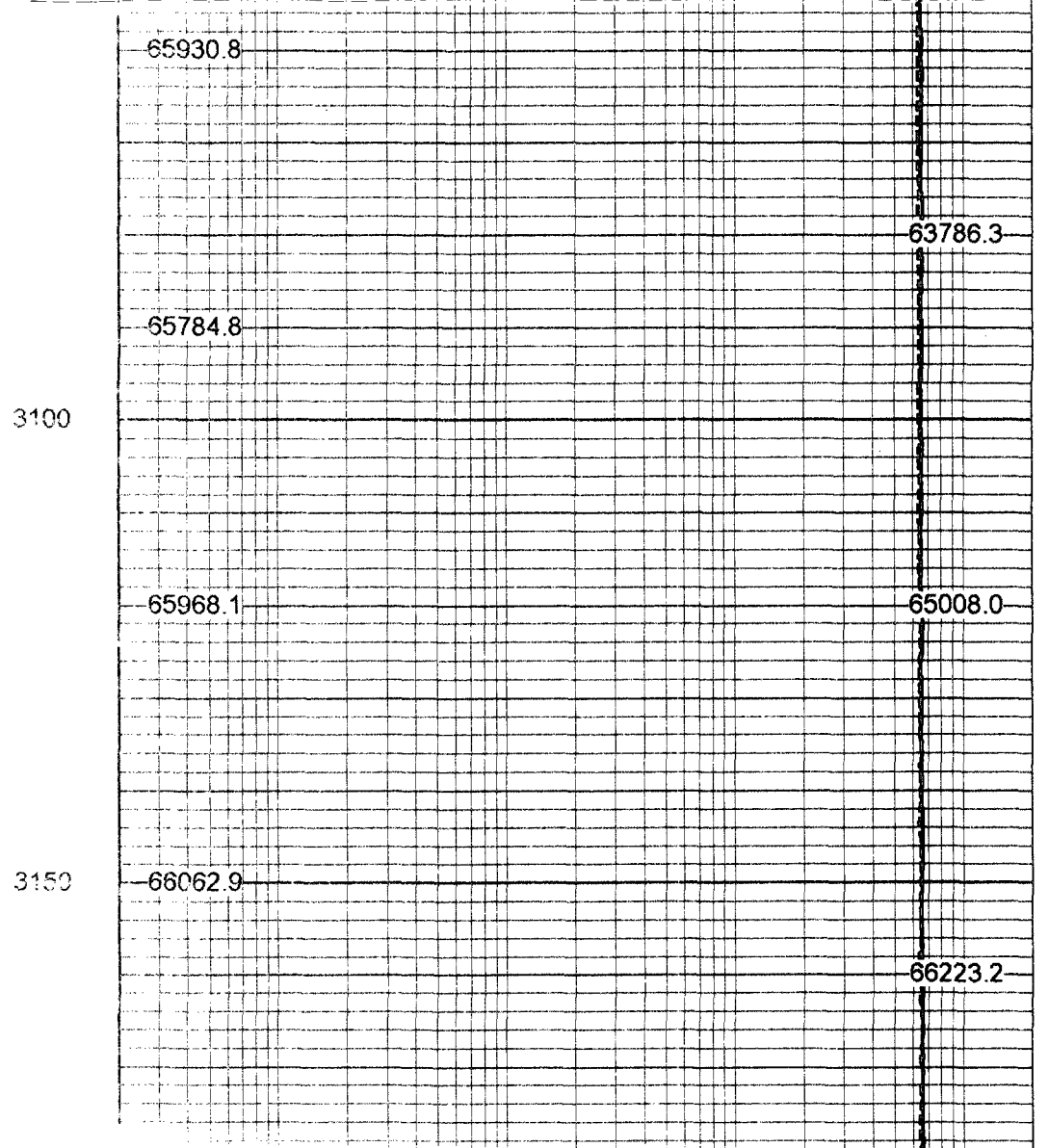
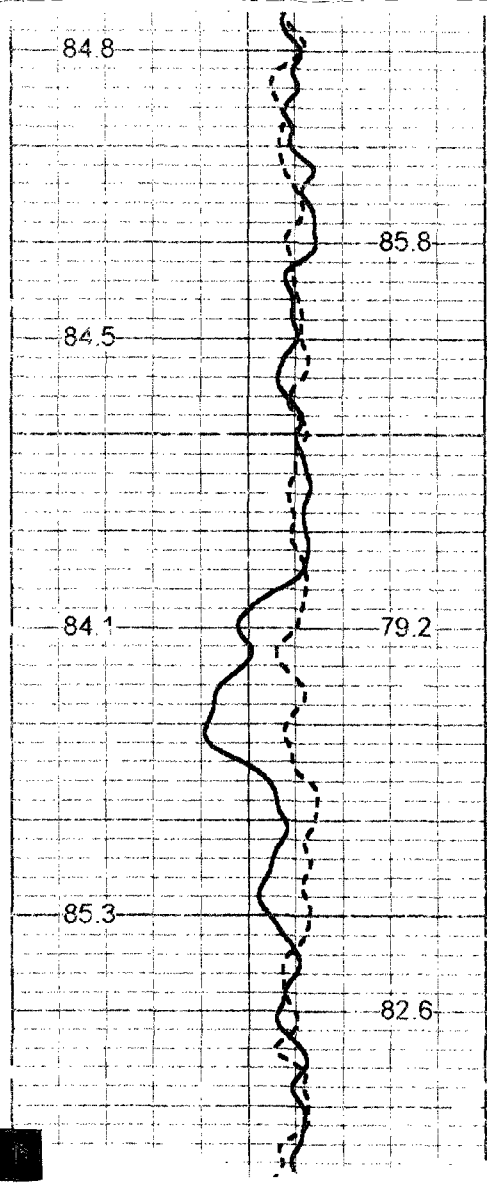
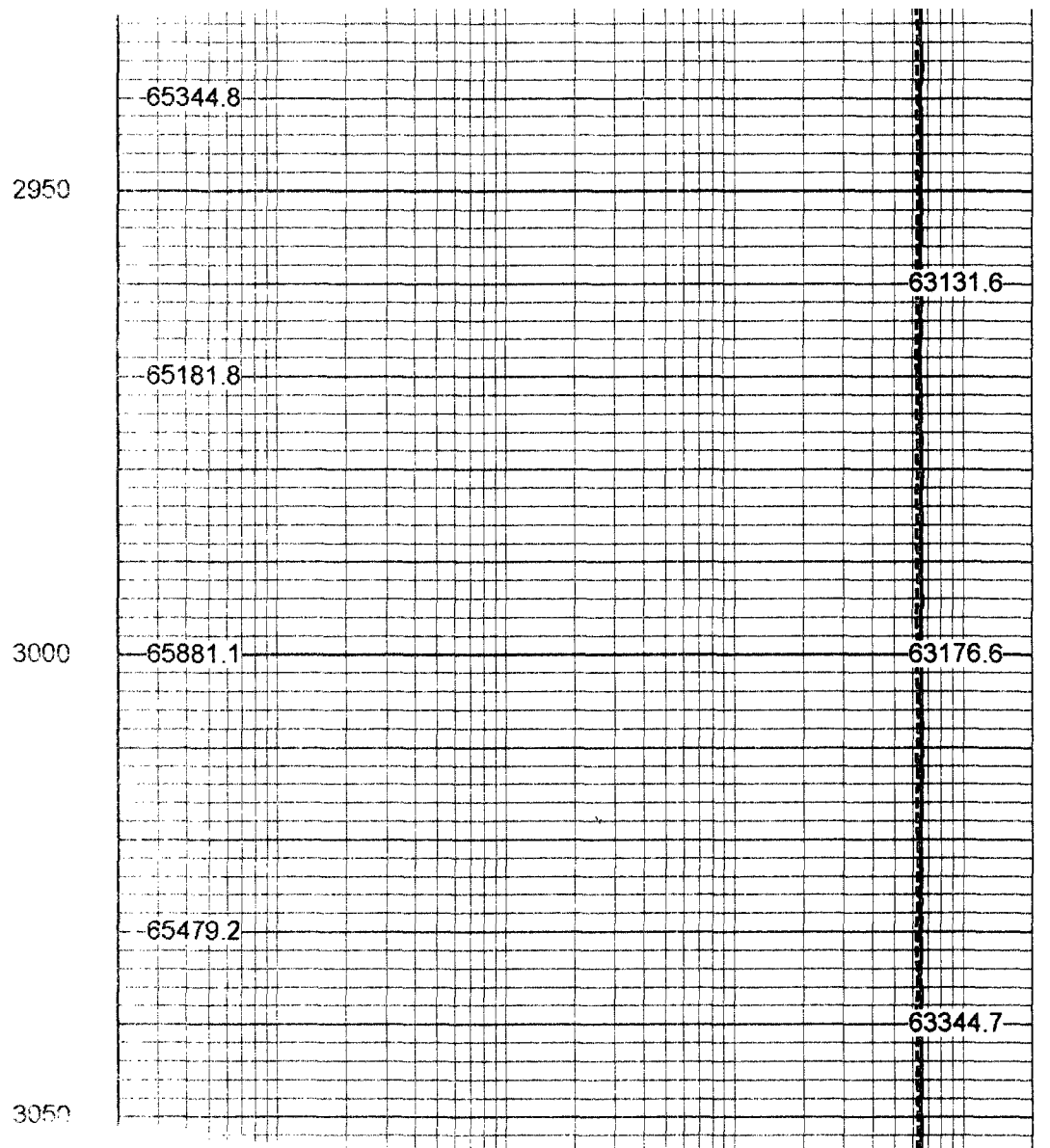
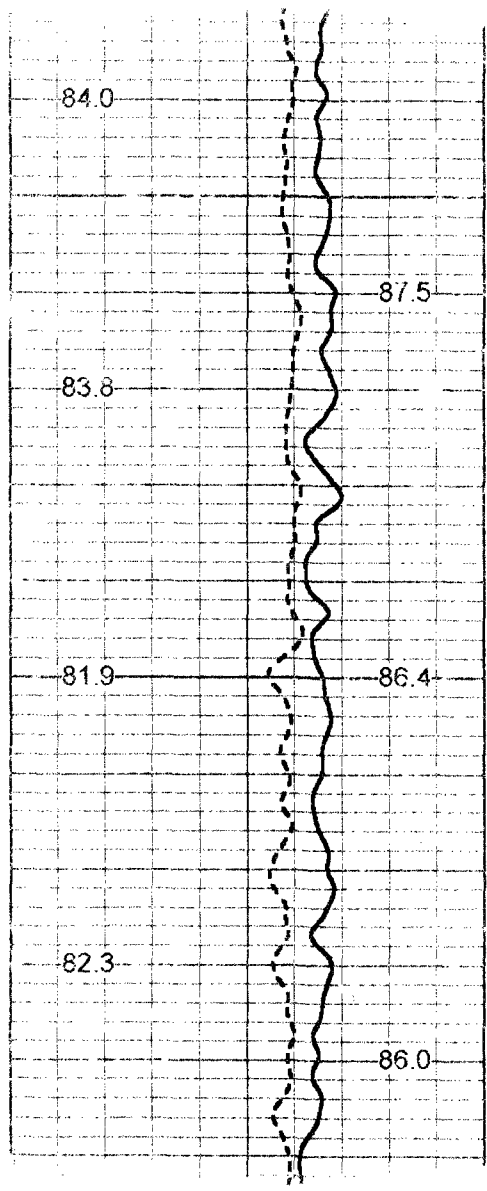
65616.6

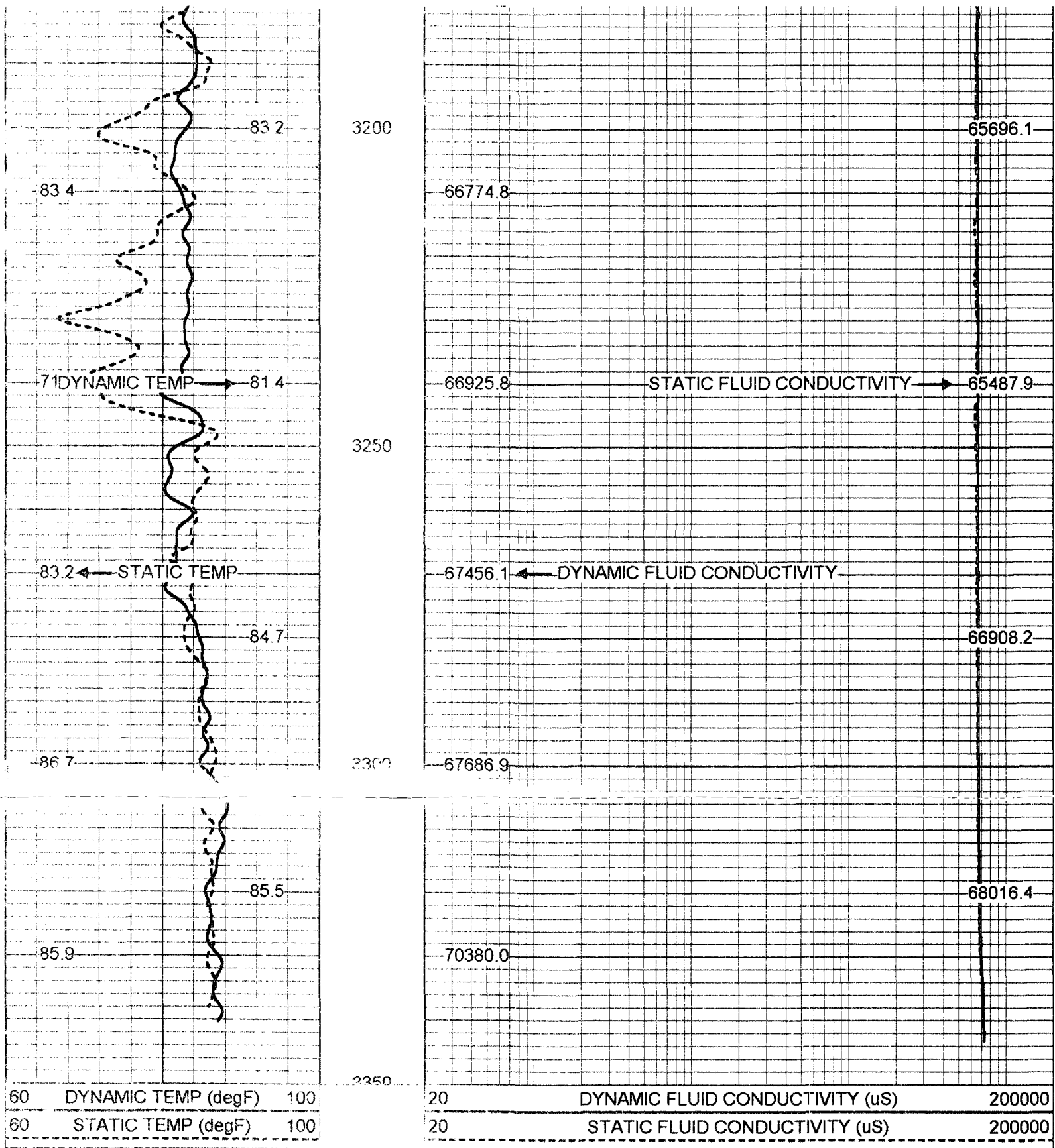
65807.0

62952.5

62962.5

63568.0





60	DYNAMIC TEMP (degF)	100	20	DYNAMIC FLUID CONDUCTIVITY (uS)	200000
60	STATIC TEMP (degF)	100	20	STATIC FLUID CONDUCTIVITY (uS)	200000

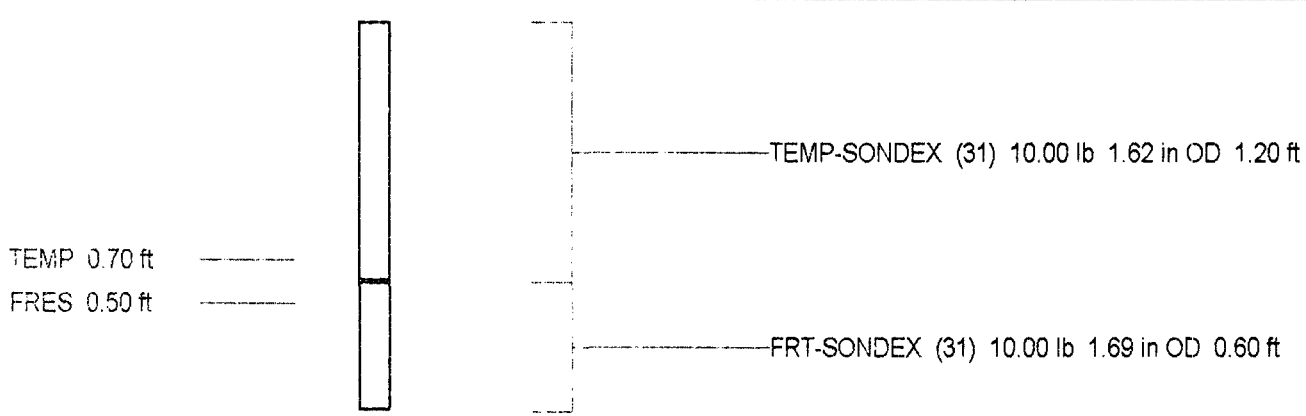
FRT Calibration Report

Serial Number: 31
 Tool Model: SONDEX
 Performed: Wed May 09 10:25:09 2001

Point #	Reading	Reference
1	0.000 cps	0.000
2	25.476 cps	500.000
3	31.707 cps	1000.000
4	205.970 cps	10000.000
5	1184.540 cps	50000.000
6	-	-

Temperature Calibration Report

Point #	Reading		Reference	
1	0	cps	0	degF
2	120.679	cps	34	degF
3	582.95	cps	135	degF



Dataset: run11/FRT
Total Length: 1.80 ft
Total Weight: 20.00 lb
O.D. 1.69 in

