



FLUID CONDUCTIVITY TEMPERATURE LOG

Company CH2M HILL Well IMMOKALEE IW-1 Field IMMOKALEE W.W.T.P. County COLLIER State FL	Company CH2M HILL Well IMMOKALEE IW-1 Field IMMOKALEE W.W.T.P. County COLLIER State FL
Location Permanent Datum Log Measured From Drilling Measured From	Elevation Elevation Other Services SEE COMMENTS

Date	5-NOV-2001	
Run Number	TEN	
Depth Driller	2980'	
Depth Logger	2980'	
Bottom Logged Interval	2980'	
Top Log Interval	CASING	
Open Hole Size	12.25"	
Type Fluid	WATER	
Density / Viscosity	N/A	
Max. Recorded Temp.	95 DEGF	
Estimated Cement Top	N/A	
Time Well Ready	1600	
Time Logger on Bottom	1700	
Equipment Number	103	
Location	FT MYERS	
Recorded By	DENISON	
Witnessed By	T LEVI	

Run Number	Bit Size	Borehole Record		Weight	Tubing Record	
		From	To		From	To
ONE	12.25"	SURFACE	310'			
TWO	4 1/2"	SURFACE	279'			
THREE	12.25"	CASING	1011'			
SEVEN	28.5"	CASING	2005'			
Casing Record		Size	Wgt/Ft	Top	Bottom	
Surface String		36"	375 W.T.	SURFACE	275'	
Prod. String		30"	375 W.T.	SURFACE	930'	
Production String		22"	375 W.T.	SURFACE	2000'	
Liner						

<<< Fold Here >>>

All interpretations are opinions based on inferences from electrical or other measurements and we cannot and do not guarantee the accuracy or correctness of any interpretation, and we shall not, except in the case of gross or willful negligence on our part, be liable or responsible for any loss, costs, damages, or expenses incurred or sustained by anyone resulting from any interpretation made by any of our officers, agents or employees. These interpretations are also subject to our general terms and conditions set out in our current Price Schedule.

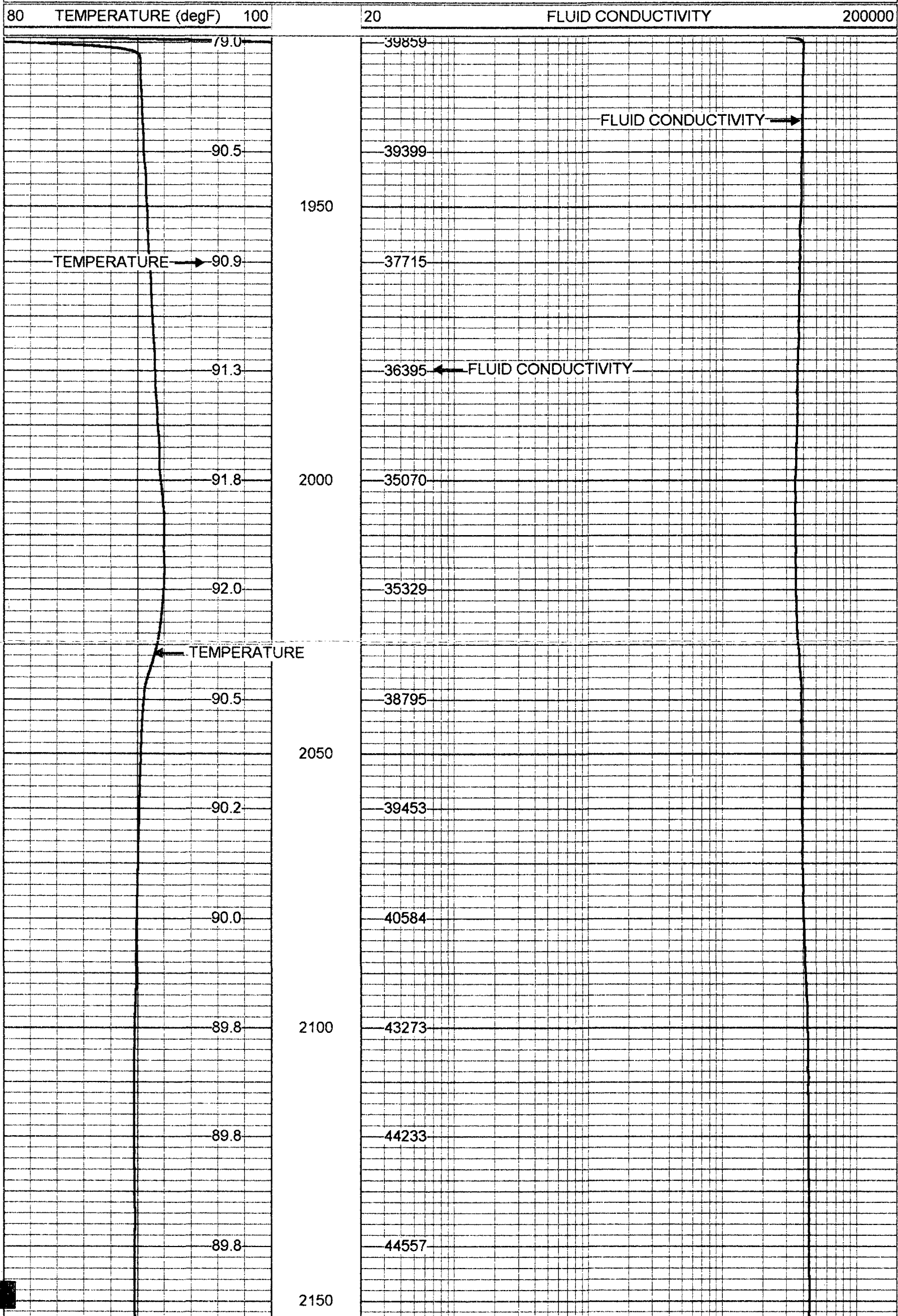
Comments

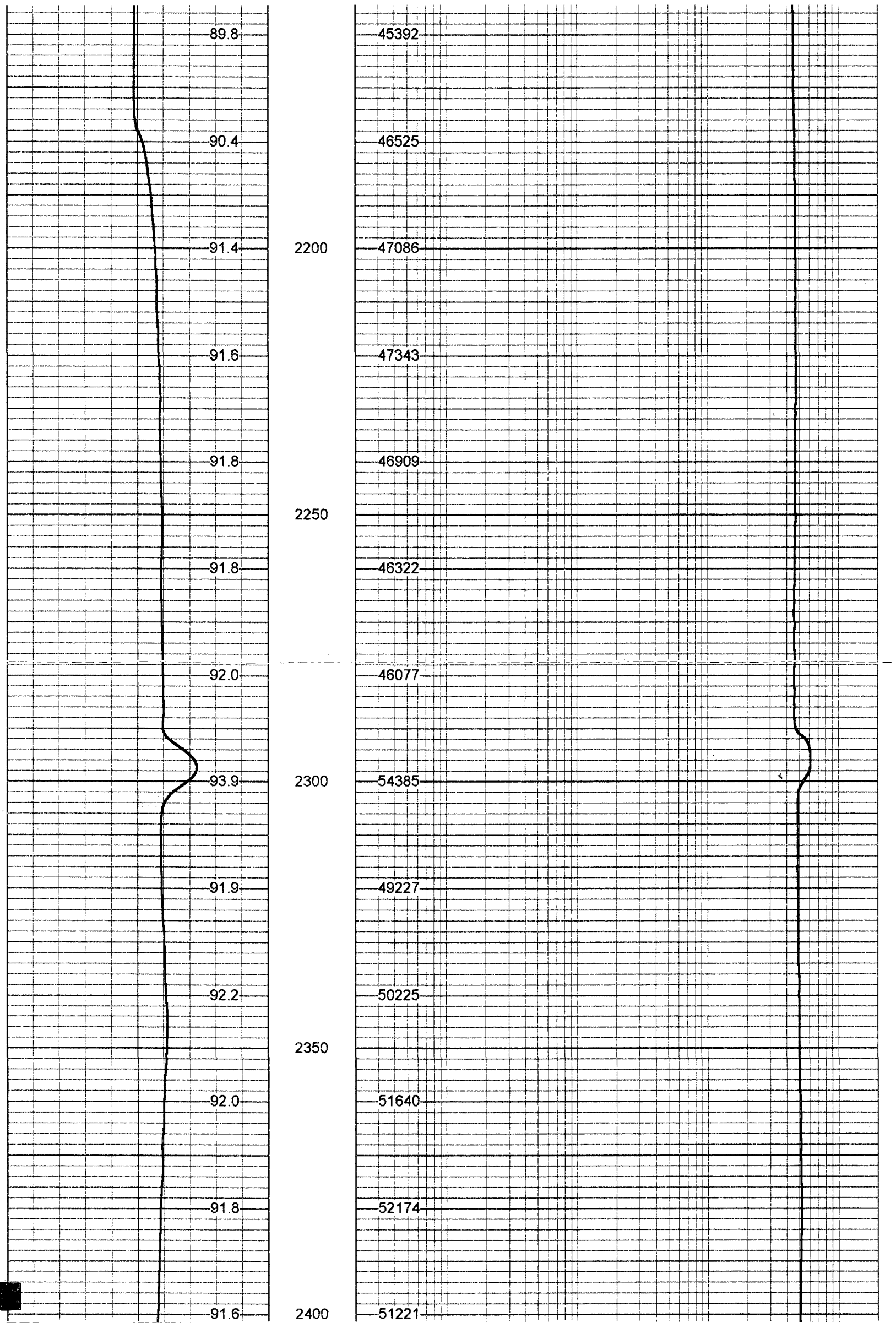
OTHER SERVICES:

 X-Y CALIPER/GAMMA RAY
 DUAL INDUCTION/LL3/SP
 BOREHOLE COMPENSATED SONIC



Database File: immokiw1.db
 Dataset Pathname: run10/pass1
 Presentation Format: frtemp.prs





91.4

49520

91.2

45259

2450

91.3

44858

91.5

44815

91.7

2500

44792

91.8

45218

91.7

2550

45137

91.6

45012

91.5

45161

91.6

2600

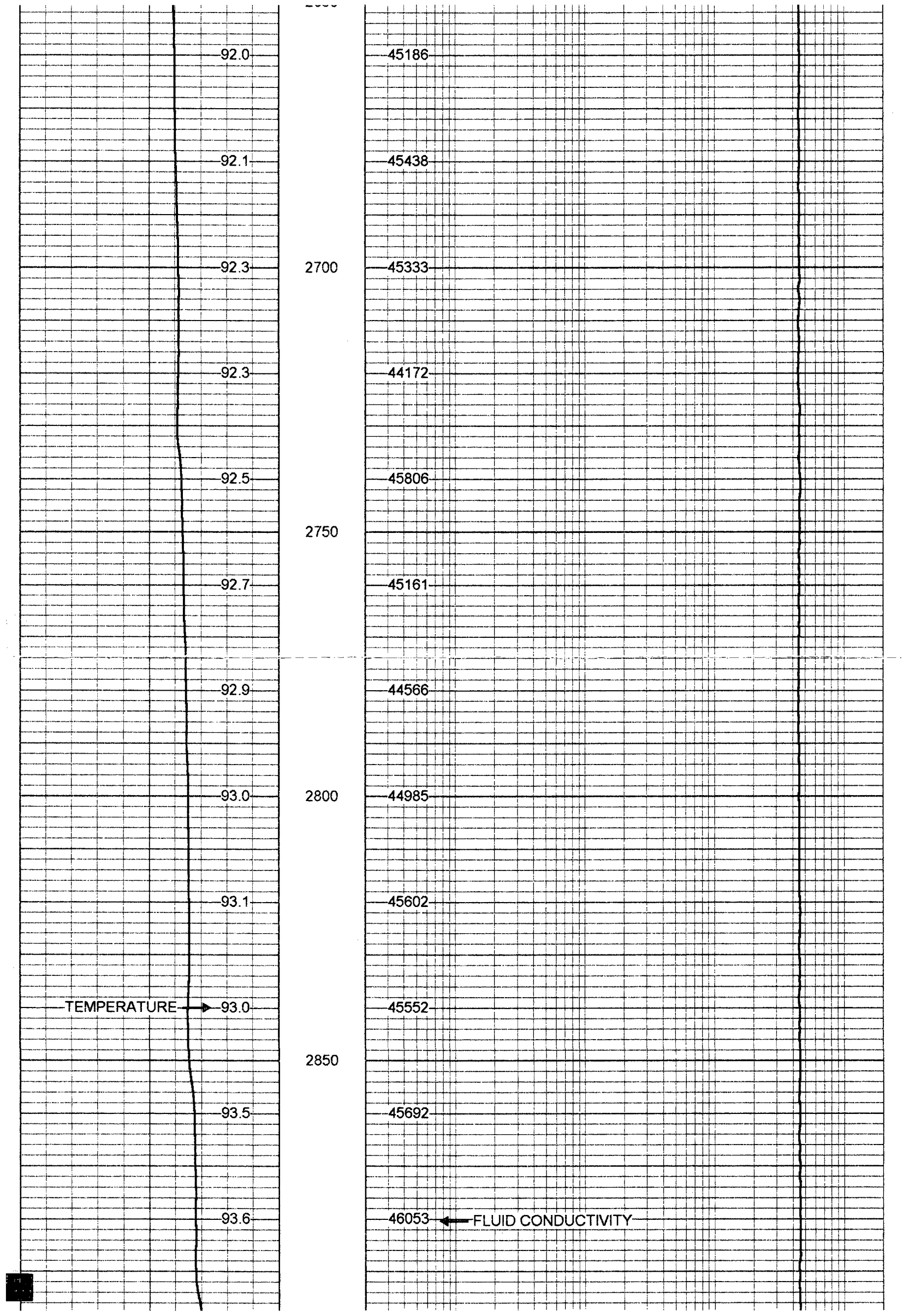
45019

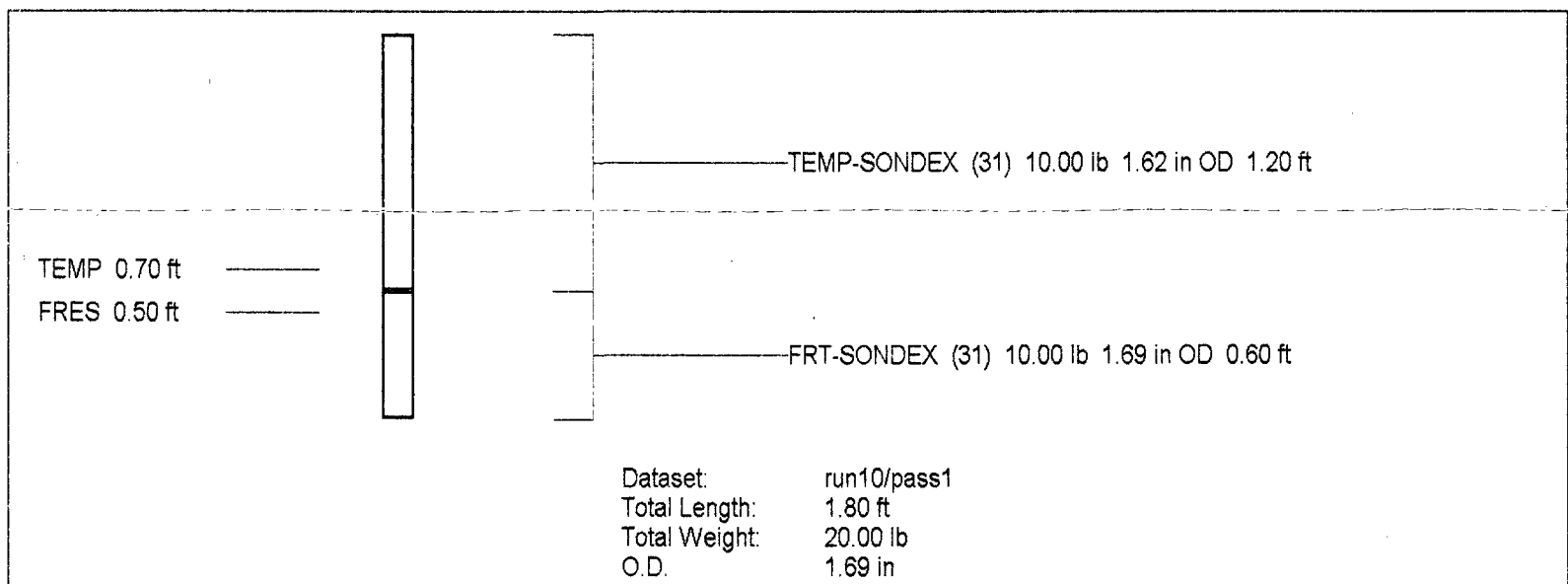
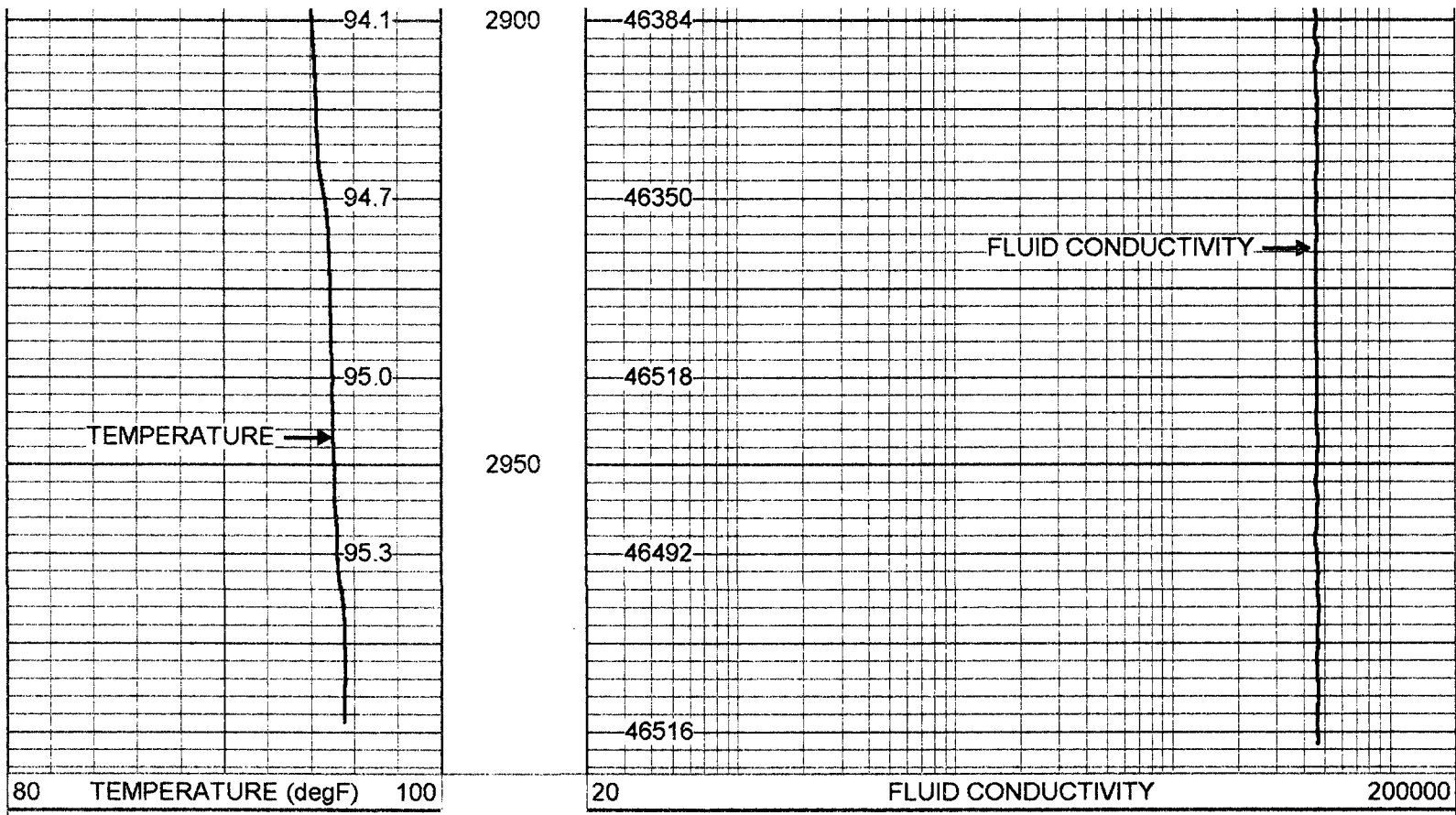
91.7

44859

91.8

44869





FRT Calibration Report

	Serial Number:	31	
	Tool Model:	SONDEX	
	Performed:	Mon May 07 10:39:40 2001	
Point #	Reading	Units	Reference
1	33.812	cps	1000.000
2	186.494	cps	10000.000
3	963.690	cps	50000.000
4		cps	
5		cps	
6		cps	

Temperature Calibration Report

	Serial Number:	31	
	Tool Model:	SONDEX	
	Performed:	Mon May 07 15:54:58 2001	
Point #	Reading	Units	Reference

2
3

582.95

cps
cps
cps

135

degF
degF
degF