



# FLUID CONDUCTIVITY TEMPERATURE LOG

Company **CH2M HILL**  
 Well **IMMOKALEE IW-1**  
 Field **IMMOKALEE W.W.T.P.**  
 County **COLLIER** State **FL**

Location

Permanent Datum  
 Log Measured From  
 Drilling Measured From

Elevation

Elevation

Other Services  
SEE  
COMMENTS

Company **CH2M HILL**  
 Well **IMMOKALEE IW-1**  
 Field **IMMOKALEE W.W.T.P.**  
 County **COLLIER**  
 State **FL**

Date **5-NOV-2001**

Run Number	TEN
Depth Driller	2980'
Depth Logger	2980'
Bottom Logged Interval	2980'
Top Log Interval	CASING
Open Hole Size	12.25"
Type Fluid	WATER
Density / Viscosity	N/A
Max. Recorded Temp.	95 DEG F
Estimated Cement Top	N/A
Time Well Ready	1600
Time Logger on Bottom	1700
Equipment Number	103
Location	FT MYERS DENISON T. LEVI
Recorded By	
Witnessed By	

Borehole Record		Tubing Record				
Run Number	Bit Size	From	To	Weight	From	To
ONE	12.25"	SURFACE	310'			
TWO	4.2"	SURFACE	279'			
THREE	12.25"	CASING	1011'			
SEVEN	28.5"	CASING	2005'			

Casing Record		Tubing Record	
Surface String	Prot. String	Production String	Liner
36"	30"	375 W.T.	275'
36"	30"	375 W.T.	930'
22"	22"	375 W.T.	2000'

<<< Fold Here >>>

All interpretations are opinions based on inferences from electrical or other measurements and we cannot and do not guarantee the accuracy or correctness of any interpretation, and we shall not, except in the case of gross or willful negligence on our part, be liable or responsible for any loss, costs, damages, or expenses incurred or sustained by anyone resulting from any interpretation made by any of our officers, agents or employees. These interpretations are also subject to our general terms and conditions set out in our current Price Schedule.

### Comments

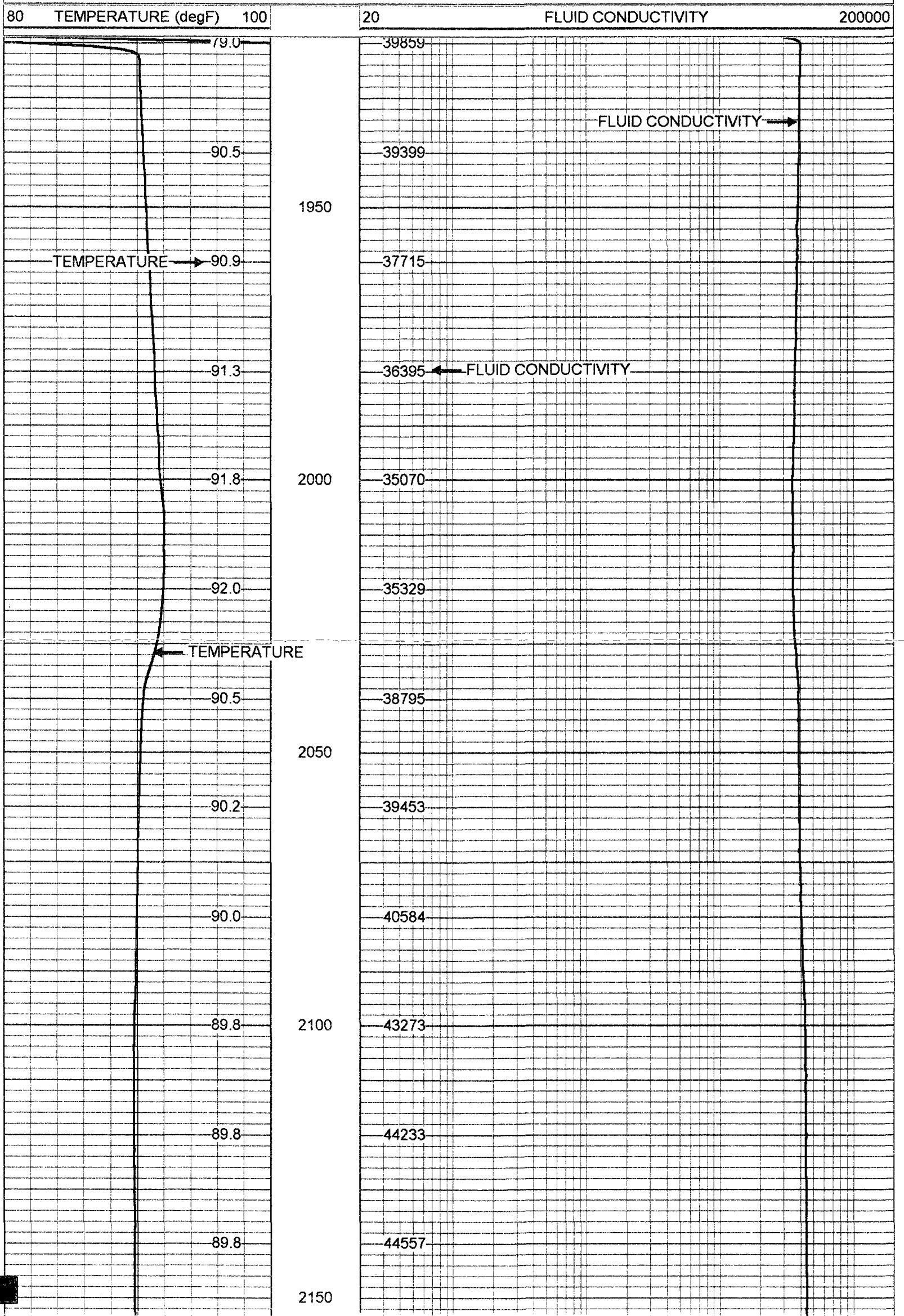
OTHER SERVICES:  
 X-Y CALIPER/GAMMA RAY  
 DUAL INDUCTION/LL3/SP  
 BOREHOLE COMPENSATED SONIC

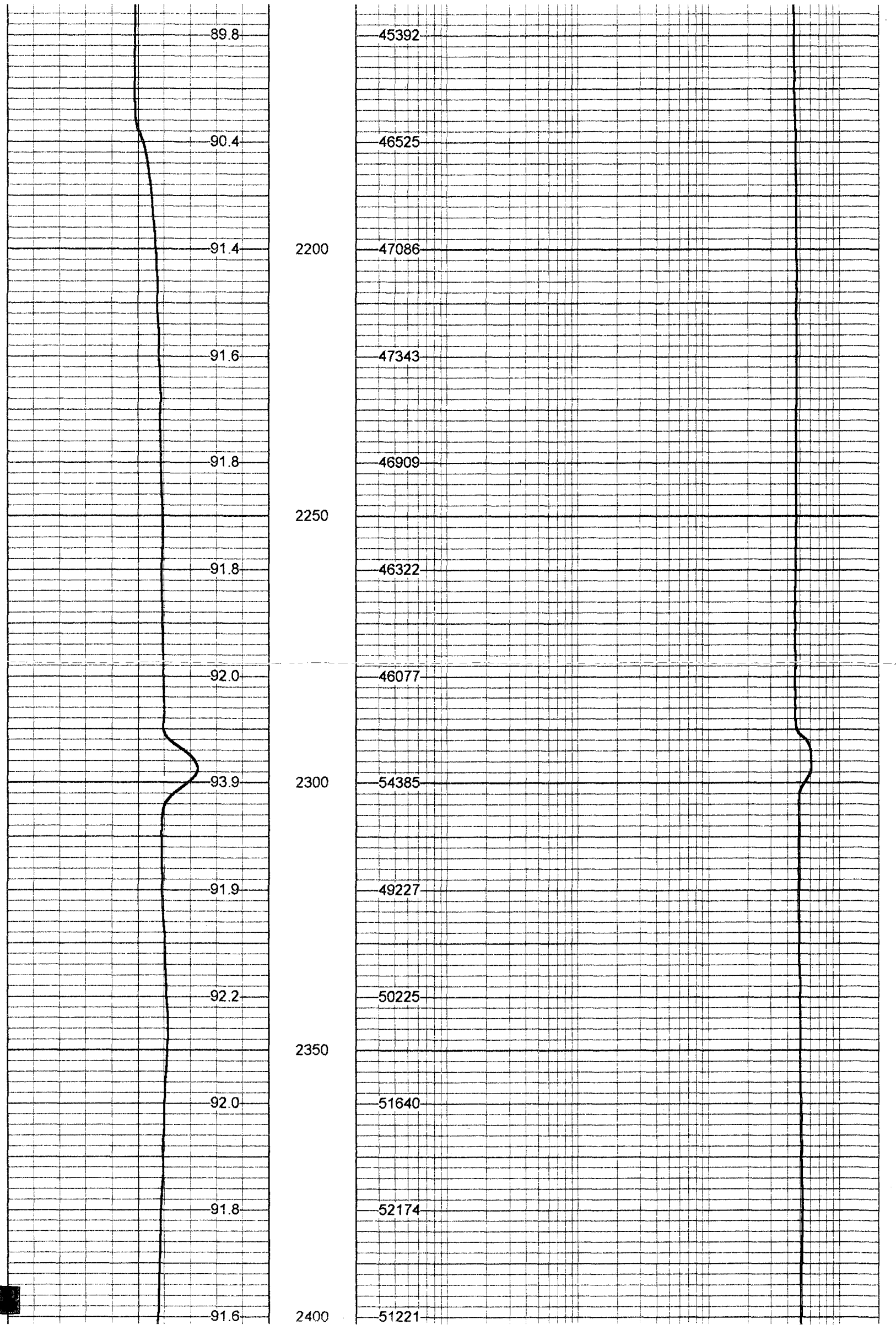


FLORIDA  
GEOPHYSICAL LOGGING, INC.

# FLUID CONDUCTIVITY/TEMP

Database File: immokiw1.db  
 Dataset Pathname: run10/pass1  
 Presentation Format: frttemp.prs





91.4

49520

91.2

45259

2450

91.3

44858

91.5

44815

91.7

2500

44792

91.8

45218

91.7

2550

45137

91.6

45012

91.5

45161

91.6

2600

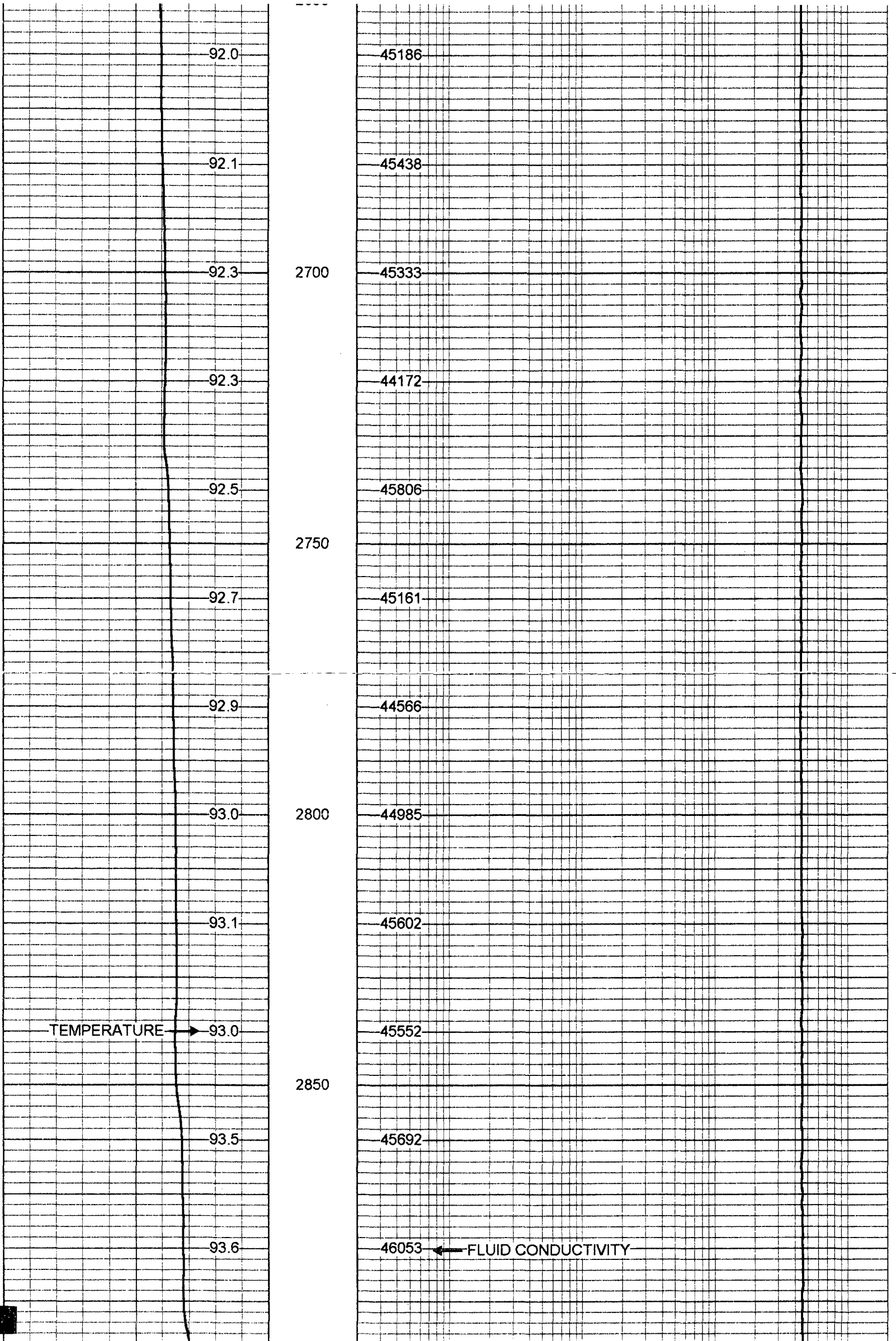
45019

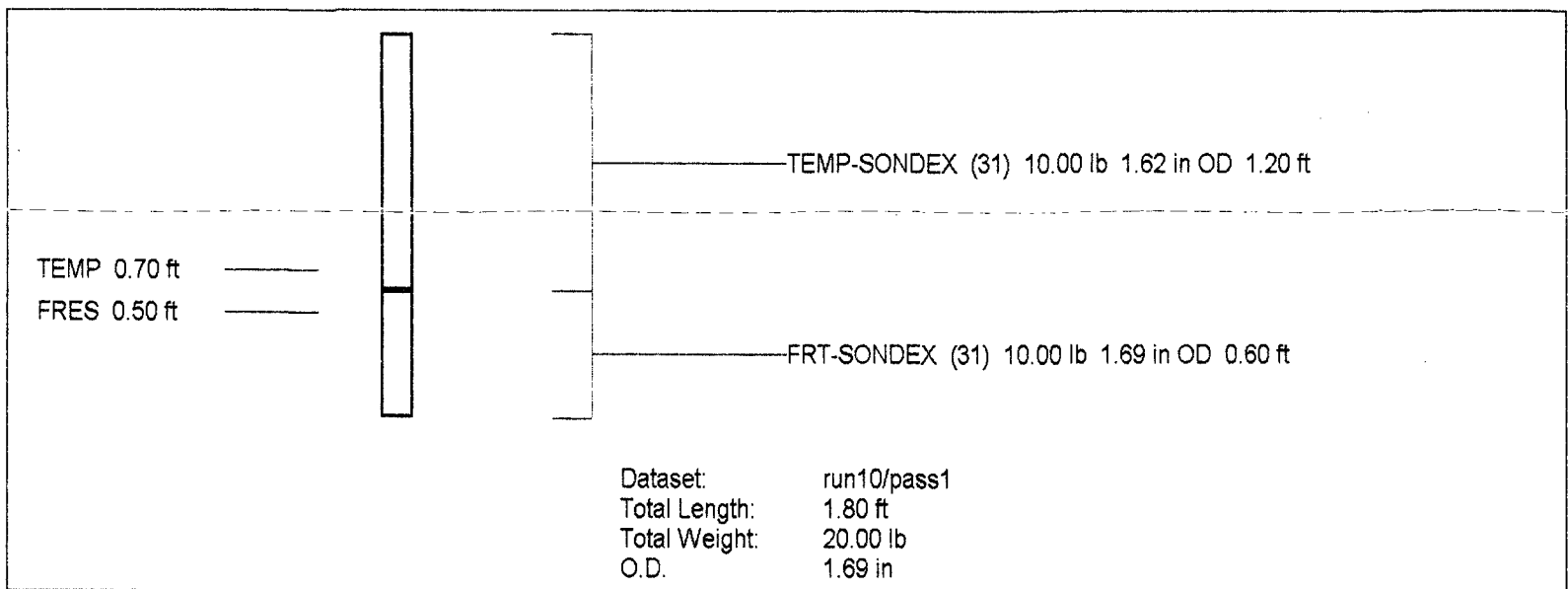
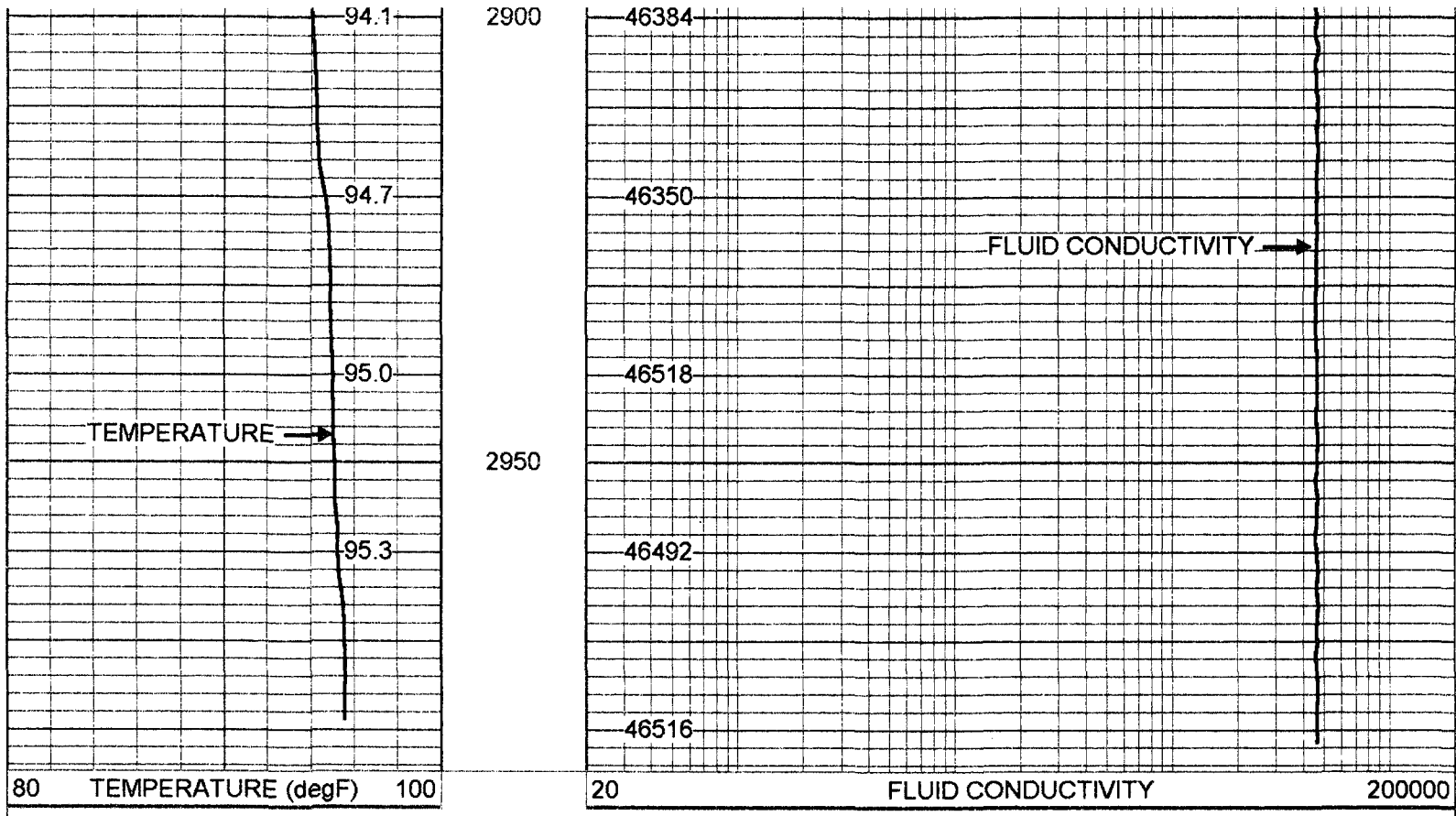
91.7

44859

91.8

44869





### FRT Calibration Report

	Serial Number:	31	
	Tool Model:	SONDEX	
	Performed:	Mon May 07 10:39:40 2001	
Point #	Reading	Units	Reference
1	33.812	cps	1000.000
2	186.494	cps	10000.000
3	963.690	cps	50000.000
4		cps	
5		cps	
6		cps	

### Temperature Calibration Report

	Serial Number:	31	
	Tool Model:	SONDEX	
	Performed:	Mon May 07 15:54:58 2001	
Point #	Reading	Units	Reference

2  
3

582.95

cps  
cps

135

degF  
degF