



FLUID CONDUCTIVITY TEMPERATURE LOG

Company CITY OF FT. MYERS
 Well MW-1
 Field CH2M HILL
 County LEE
 State FLORIDA

Company CITY OF FT. MYERS
 Well MONITOR WELL 1
 Field CH2M HILL
 County LEE
 State FLORIDA

Location ROWTTP
 Permanent Datum PAD
 Log Measured From
 Drilling Measured From
 Elevation 20'
 Other Services SEE COMMENTS
 Elevation K.B. 23.5', D.F. 20', G.L. 20'

Date	19-MAR-2002
Run Number	TWO
Depth Driller	1249'
Depth Logger	1249'
Bottom Logged Interval	1249'
Top Log Interval	CASING
Open Hole Size	12.25"
Type Fluid	WATER
Density / Viscosity	N/A
Max. Recorded Temp.	N/A
Estimated Cement Top	N/A
Time Well Ready	ON ARRIVAL
Time Logger on Bottom	14:30
Equipment Number	103
Location	FT. MYERS DENISON R. DEAN
Recorded By	
Witnessed By	

Borehole Record		Tubing Record				
Run Number	Bit Size	From	To	Weight	From	To
ONE	12.25"	SURFACE	480'			
TWO	32.5"	SURFACE	458'			
THREE	12.25"	CASING	1250'			
Casing Record	Size	Wgt/Ft	Top	Bottom		
Surface String	24"	.375	SURFACE	450'		
Production String						
Liner						

<<< Fold Here >>>

All interpretations are opinions based on inferences from electrical or other measurements and we cannot and do not guarantee the accuracy or correctness of any interpretation, and we shall not, except in the case of gross or willful negligence on our part, be liable or responsible for any loss, costs, damages, or expenses incurred or sustained by anyone resulting from any interpretation made by any of our officers, agents or employees. These interpretations are also subject to our general terms and conditions set out in our current Price Schedule.

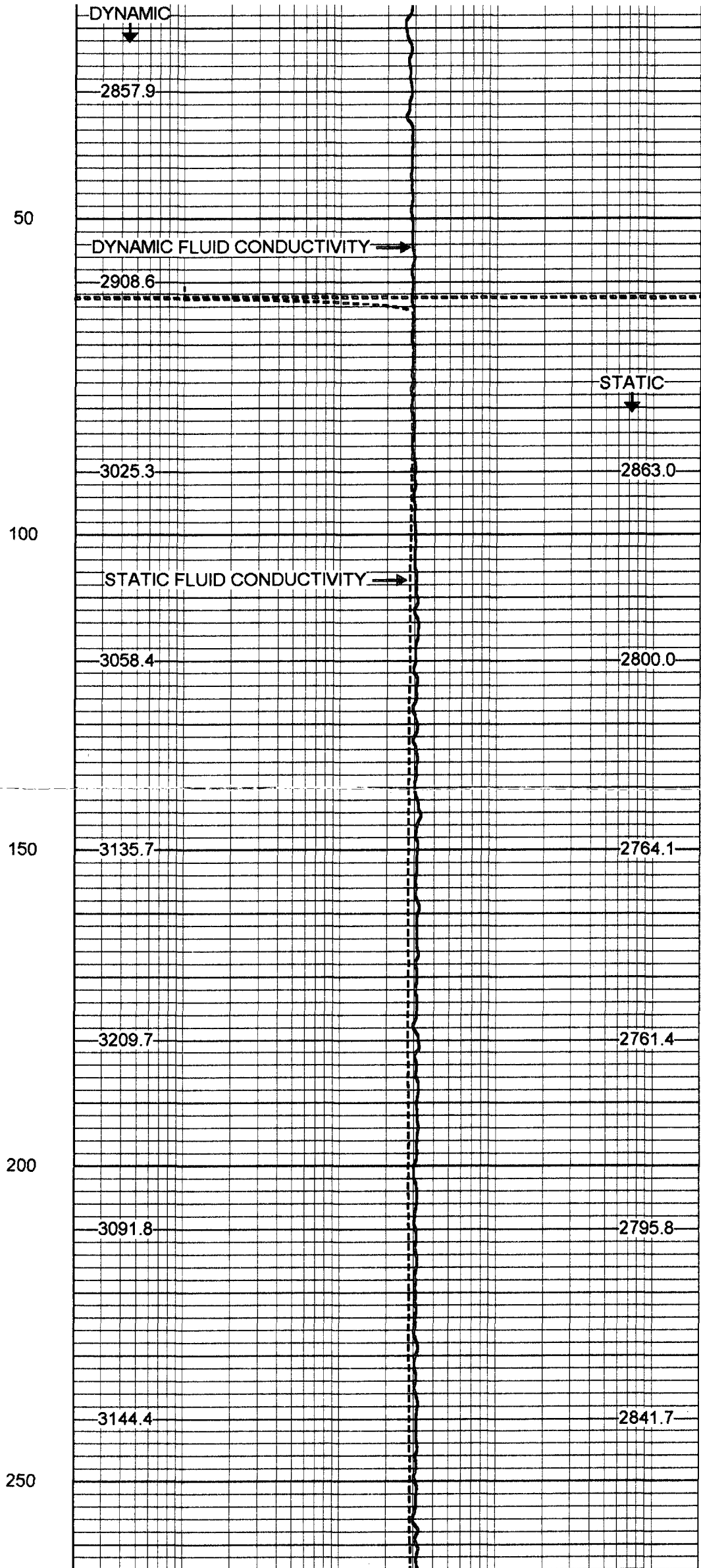
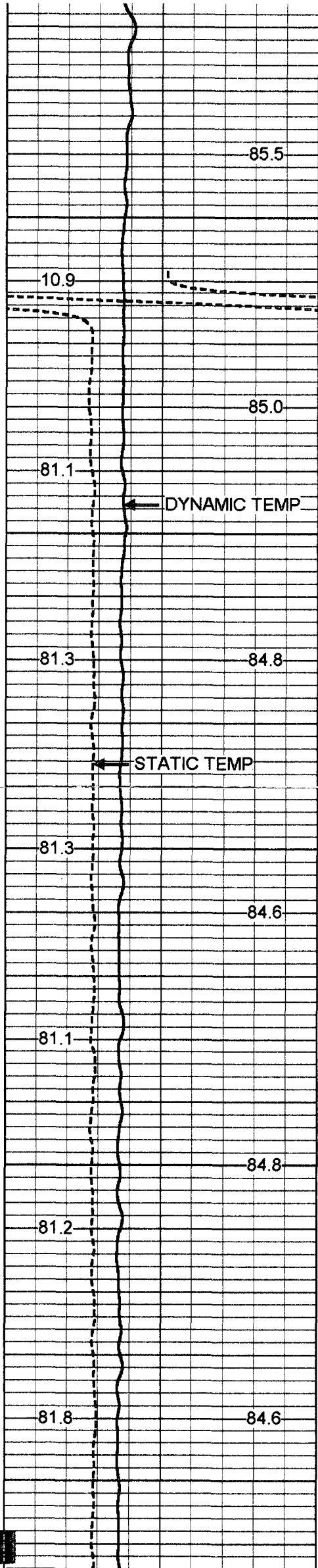
Comments

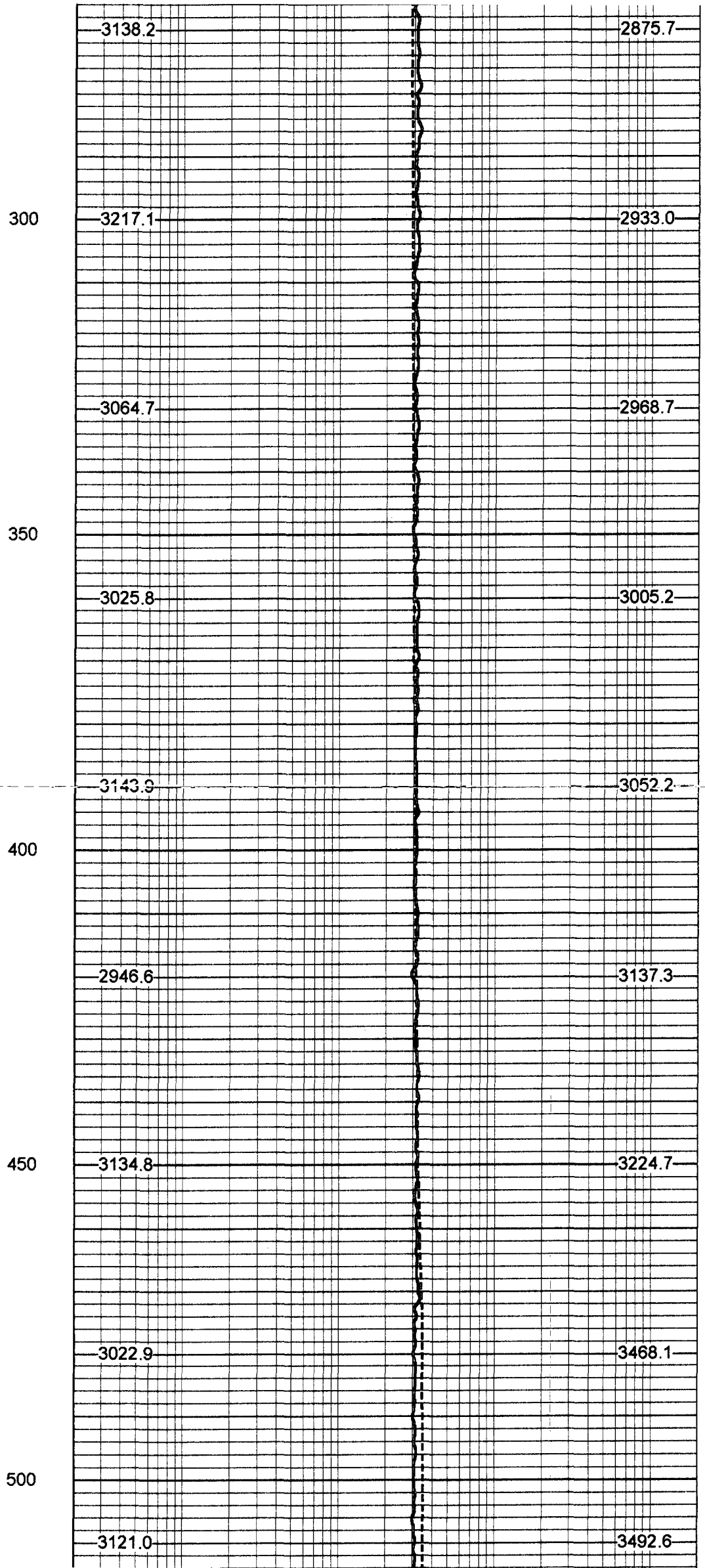
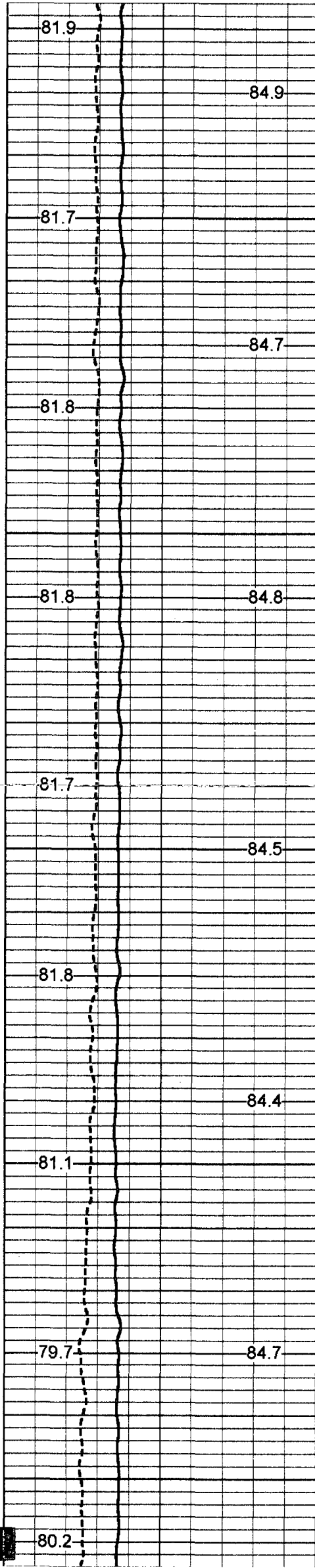
DYNAMIC FLOWRATE = 300

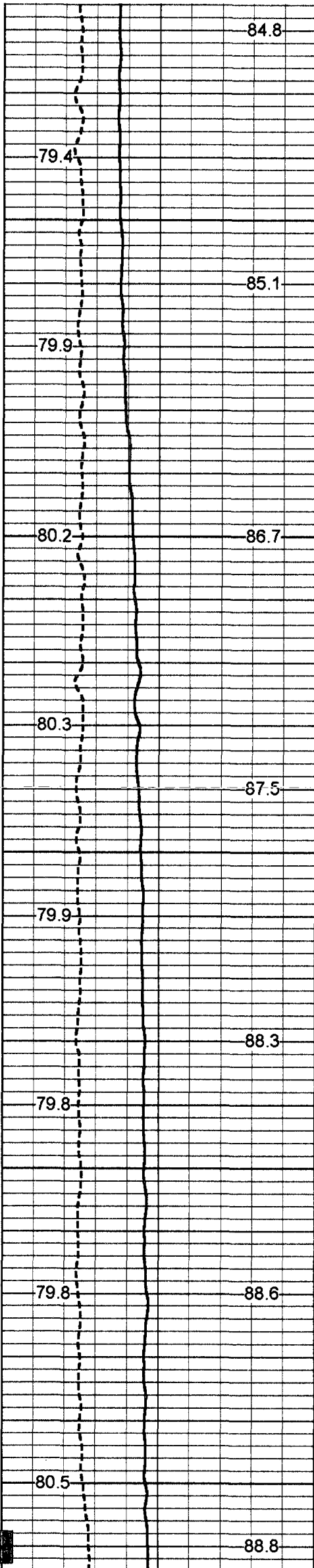
 OTHER SERVICES:
 X-Y CALIPER/GAMMA RAY
 DUAL INDUCTION
 BOREHOLE COMPENSATED SONIC
 FLOWMETER

Database File: ftmmw1.db
 Dataset Pathname: run2/pass24
 Presentation Format: frt_mg.prs
 Dataset Creation: Wed Mar 20 13:30:43 2002 by Log VER_5.4
 Charted by: Depth in Feet scaled 1:240

70	DYNAMIC TEMP (degF)	110	20	DYNAMIC FLUID CONDUCTIVITY (uS)	200000
70	STATIC TEMP (degF)	110	20	STATIC FLUID CONDUCTIVITY (uS)	200000







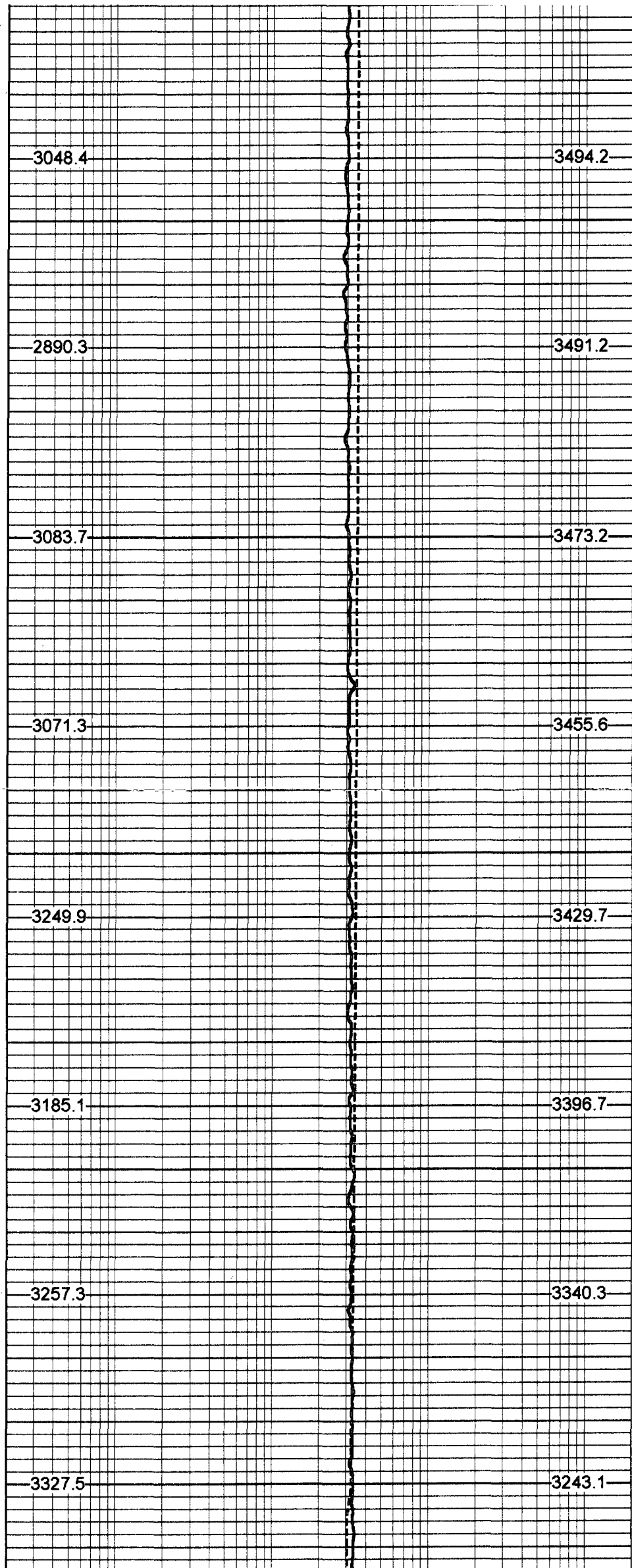
550

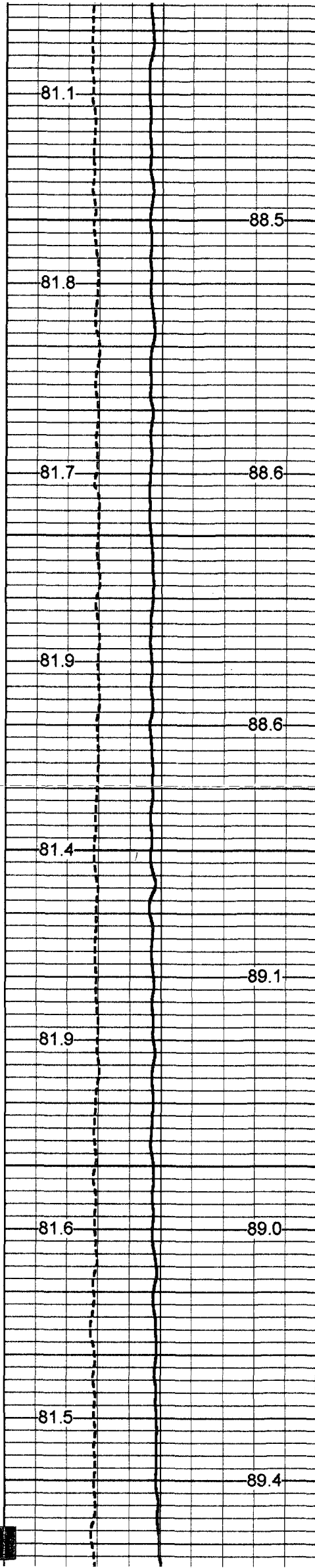
600

650

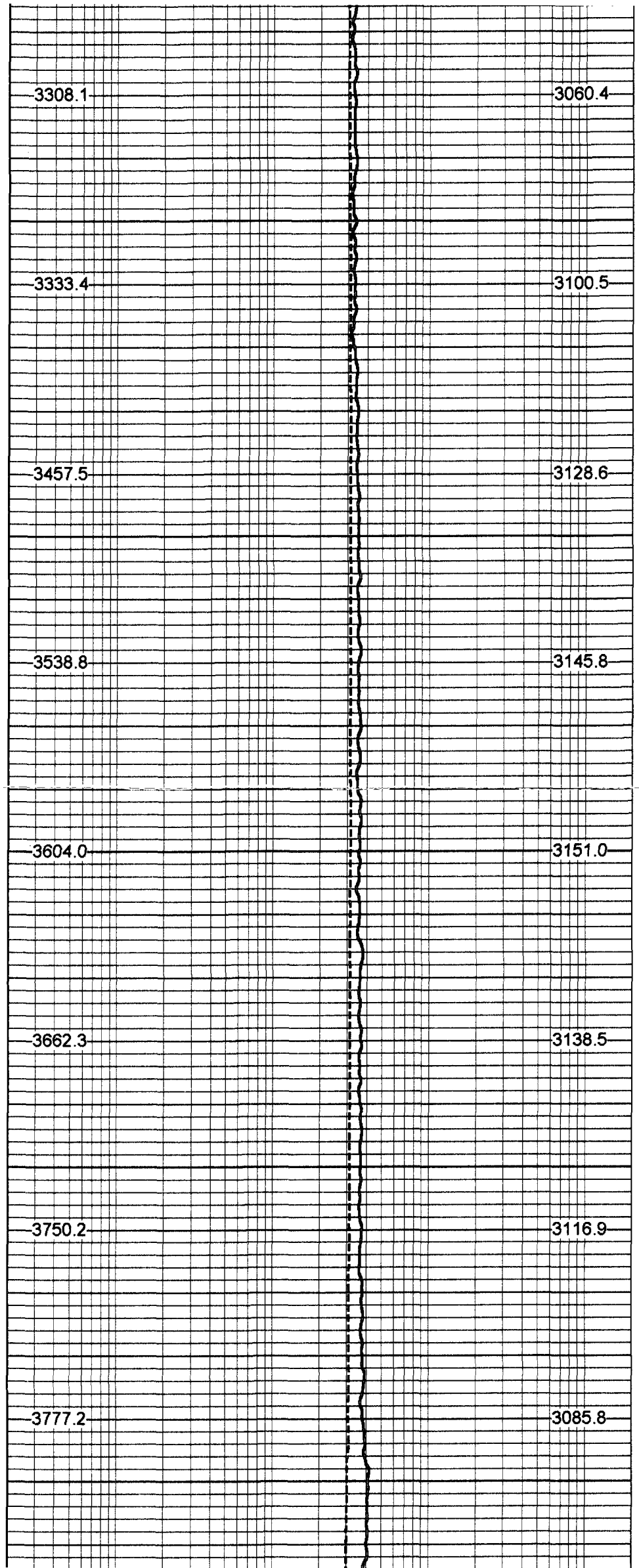
700

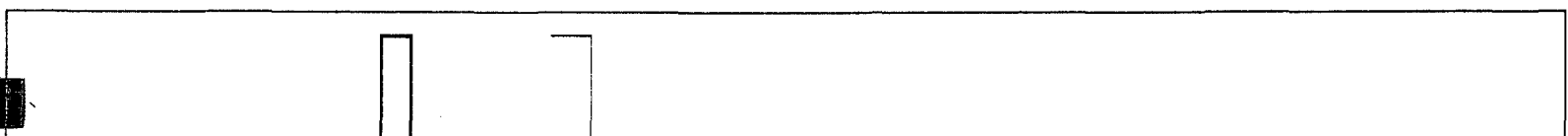
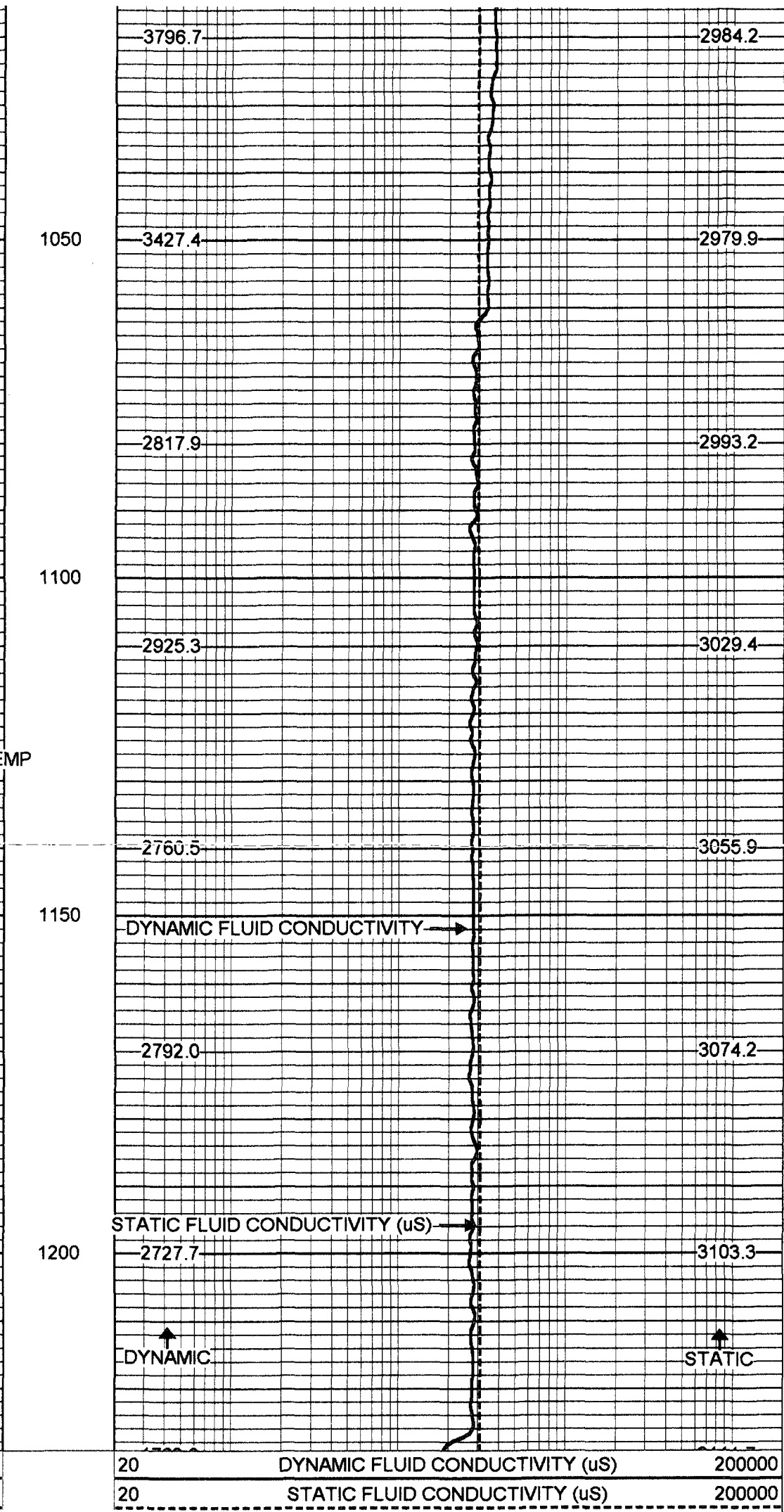
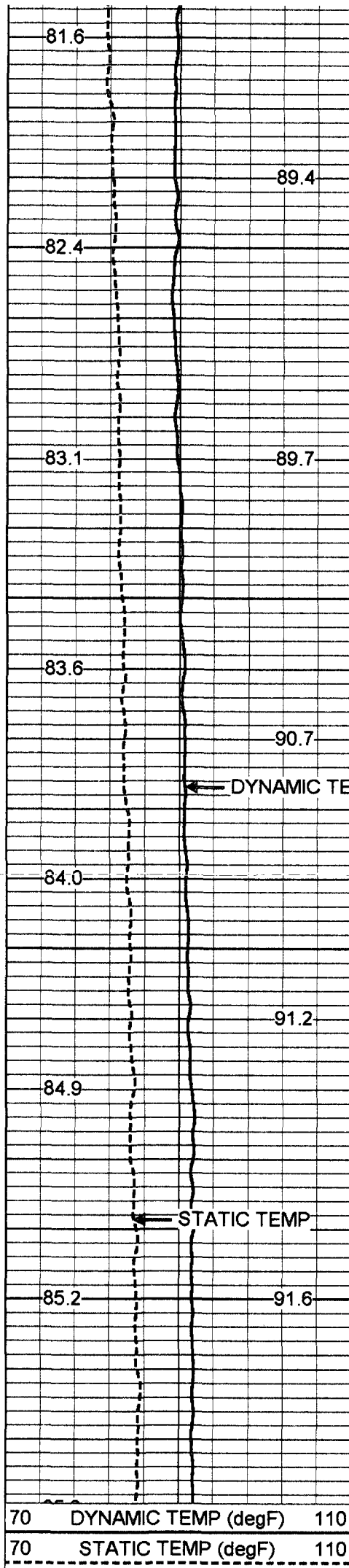
750





800
850
900
950
1000





TEMP 0.70 ft

FRES 0.50 ft

TEMP-SONDEX (30) 10.00 lb 1.62 in OD 1.20 ft

FRT-SONDEX (30) 10.00 lb 1.69 in OD 0.60 ft

Dataset: run2/pass23
 Total Length: 1.80 ft
 Total Weight: 20.00 lb
 O.D.: 1.69 in

FRT Calibration Report

Serial Number: 30
 Tool Model: SONDEX
 Performed: Mon May 07 16:59:04 2001

Point #	Reading		Reference
1	38.604	cps	1000.000
2	332.194	cps	10000.000
3	1502.090	cps	50000.000
4		cps	
5		cps	
6		cps	

Temperature Calibration Report

Serial Number: 30
 Tool Model: SONDEX
 Performed: Mon May 07 15:43:28 2001

Point #	Reading		Reference	
1	113.926	cps	33	degF
2	659.964	cps	140	degF
3		cps		degF