



YOUNGQUIST BROTHERS, Inc
GEOPHYSICAL LOGGING DIVISION

HIGH RESOLUTION TEMPERATURE LOG

RECEIVED
MAY 1 1980
DEPT. - SOUTH DAKOTA

Company CITY OF FT. MYERS
Well IW-1
Field CH2M HILL
County LEE
State FLORIDA

Company CITY OF FT. MYERS
Well IW-1
Field CH2M HILL
County LEE
State FLORIDA

Location ROWTTP
Permanent Datum PAD
Log Measured From
Drilling Measured From
Elevation 20'
Other Services RTS
Elevation K.B. 23.5', D.F. 20', G.L. 20'

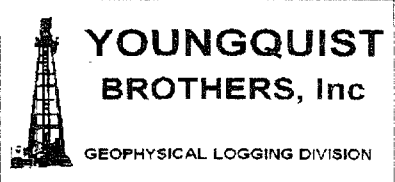
Date	4/15/02
Run Number	ELEVEN
Depth Driller	3040'
Depth Logger	3040'
Bottom Logged Interval	3040'
Top Log Interval	2230'
Open Hole Size	12.25"
Type Fluid	WATER
Density / Viscosity	N/A
Max. Recorded Temp.	99.3 DEG F
Estimated Cement Top	N/A
Time Well Ready	ON ARRIVAL
Time Logger on Bottom	0730
Equipment Number	103
Location	FT. MYERS DENISON R. DEAN
Recorded By	FT. MYERS DENISON R. DEAN
Witnessed By	CATHEY

Run Number	Bit	Borehole Record		Wgt/H	Tubing Record	
		From	To		Weight	From
THREE	34.5"	CASING	1660'	375	SURFACE	450'
FIVE	26.5"	CASING	2305'	500	SURFACE	1650'
SIX	22"	CASING	2315'	500	SURFACE	2308'
SEVEN	12.25"	CASING	3040'	FRP	SURFACE	2298'
Casing Record		Size			Top	Bottom
Surface String	36"			375	SURFACE	450'
Prod. String	28"			500	SURFACE	1650'
Production String	18"			500	SURFACE	2308'
Liner	13.375"			FRP	SURFACE	2298'

<<< Fold Here >>>

All interpretations are opinions based on inferences from electrical or other measurements and we cannot and do not guarantee the accuracy or correctness of any interpretation, and we shall not, except in the case of gross or willful negligence on our part, be liable or responsible for any loss, costs, damages, or expenses incurred or sustained by anyone resulting from any interpretation made by any of our officers, agents or employees. These interpretations are also subject to our general terms and conditions set out in our current Price Schedule.

Comments



TEMPERATURE SURVEY

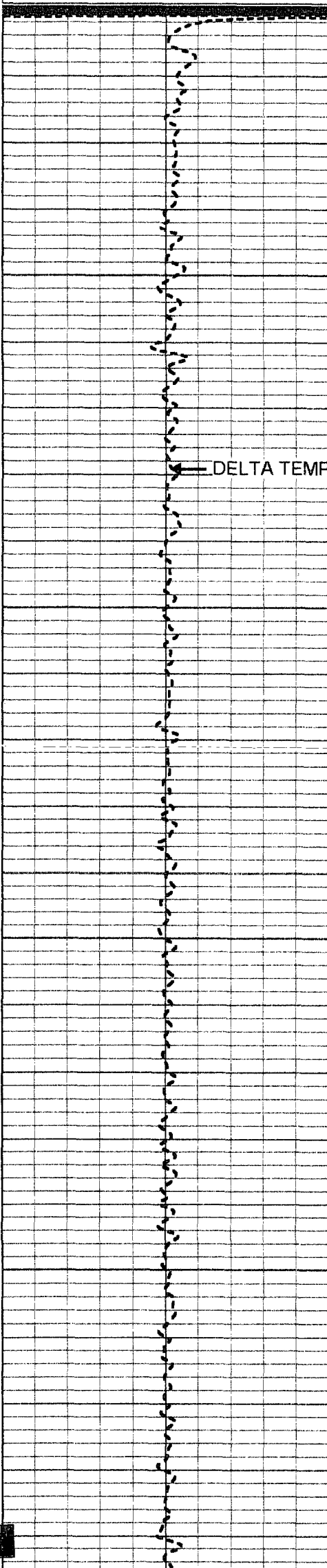
Database File: ftmiwrts.db
Dataset Pathname: pass4
Presentation Format: temp.prs

-1 DELTA TEMPERATURE (degF) 1

70

TEMPERATURE (degF)

110



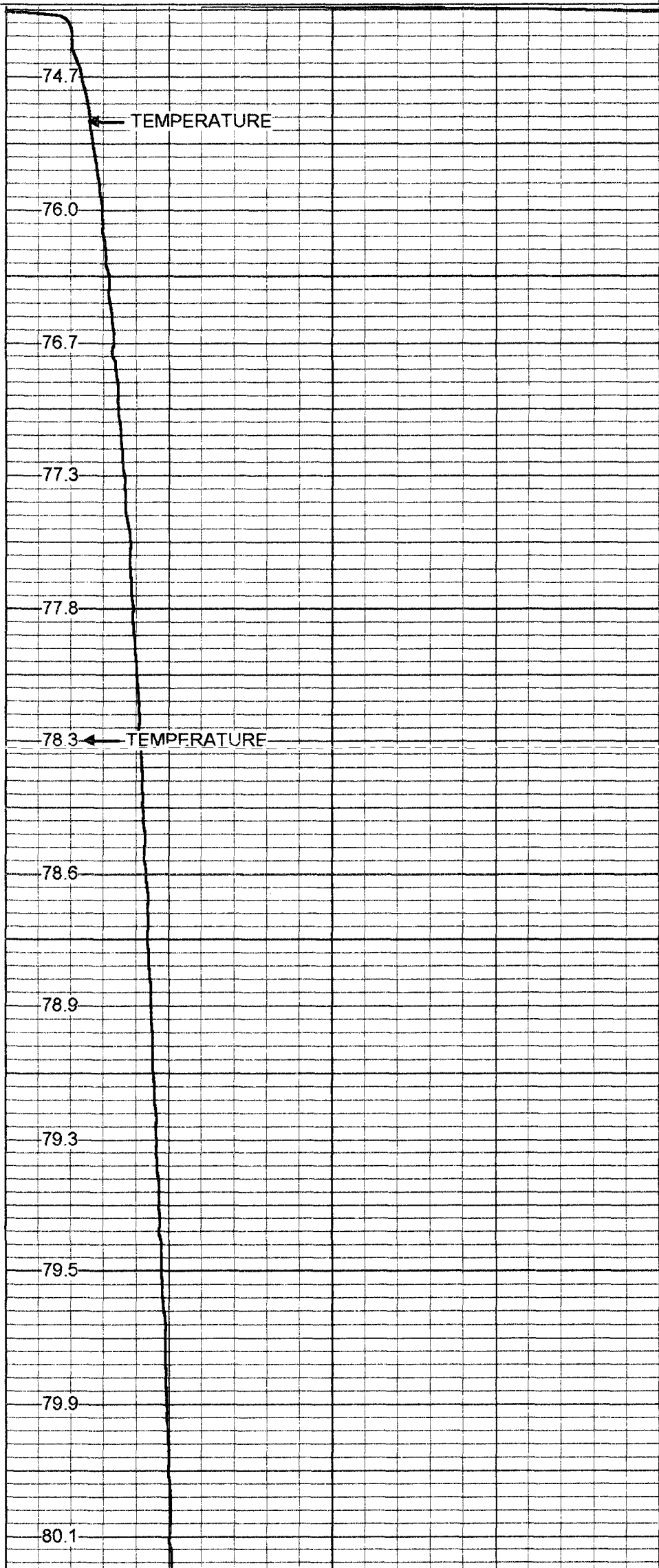
DELTA TEMPERATURE

50

100

150

200



74.7

76.0

76.7

77.3

77.8

78.3

78.6

78.9

79.3

79.5

79.9

80.1

TEMPERATURE

TEMPERATURE



500

550

600

650

700

82.1

82.2

82.3

82.3

82.1

82.2

82.4

82.5

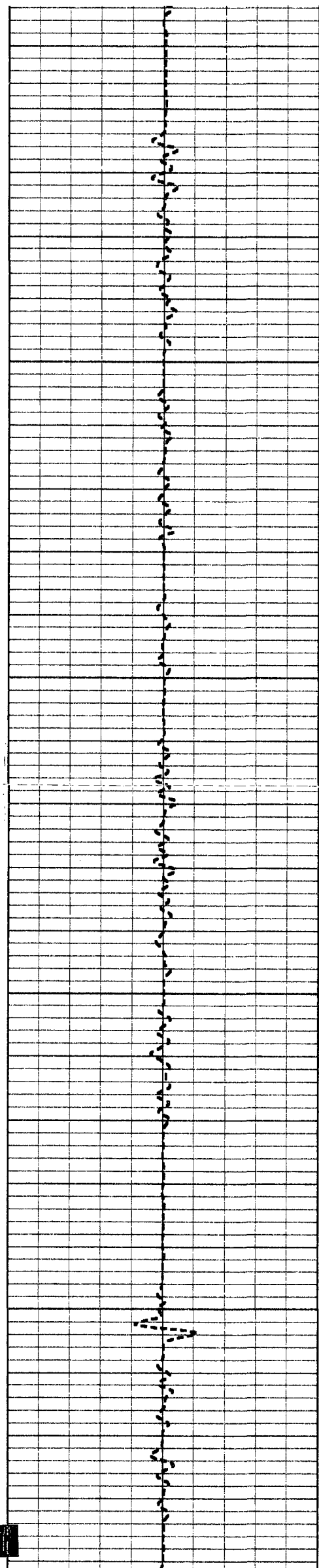
82.7

82.9

83.2

83.5

83.8



750

84.1

84.3

800

84.6

84.6

84.7

850

84.9

85.0

900

85.3

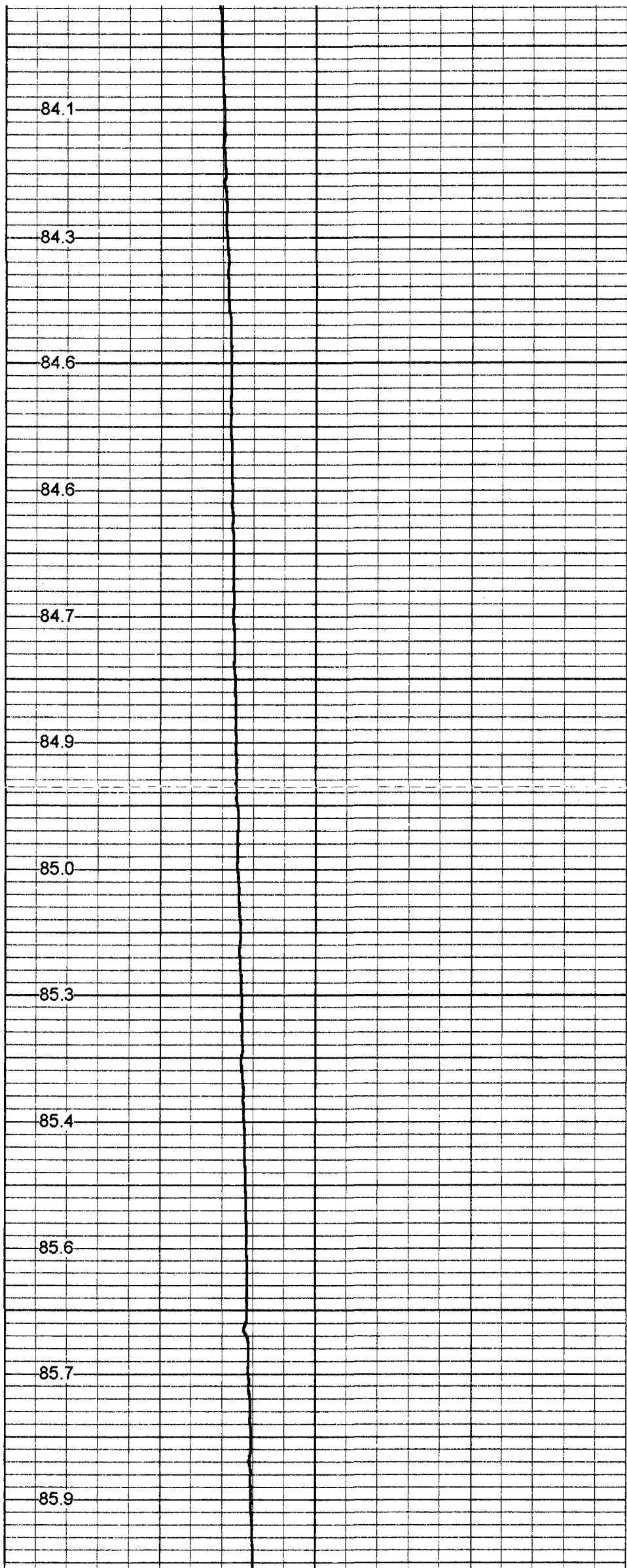
85.4

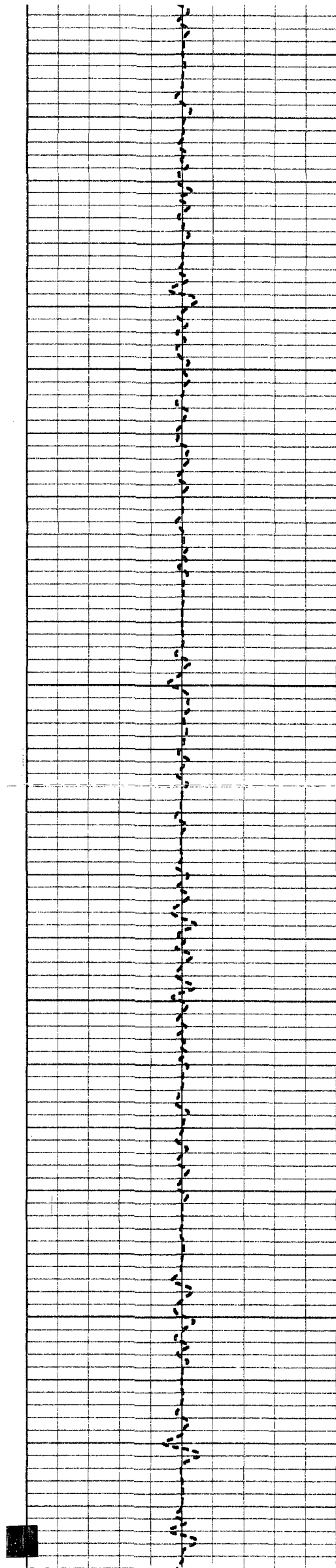
85.6

950

85.7

85.9





1000

86.1

86.2

86.5

1050

86.7

86.8

1100

86.9

87.2

87.3

1150

87.5

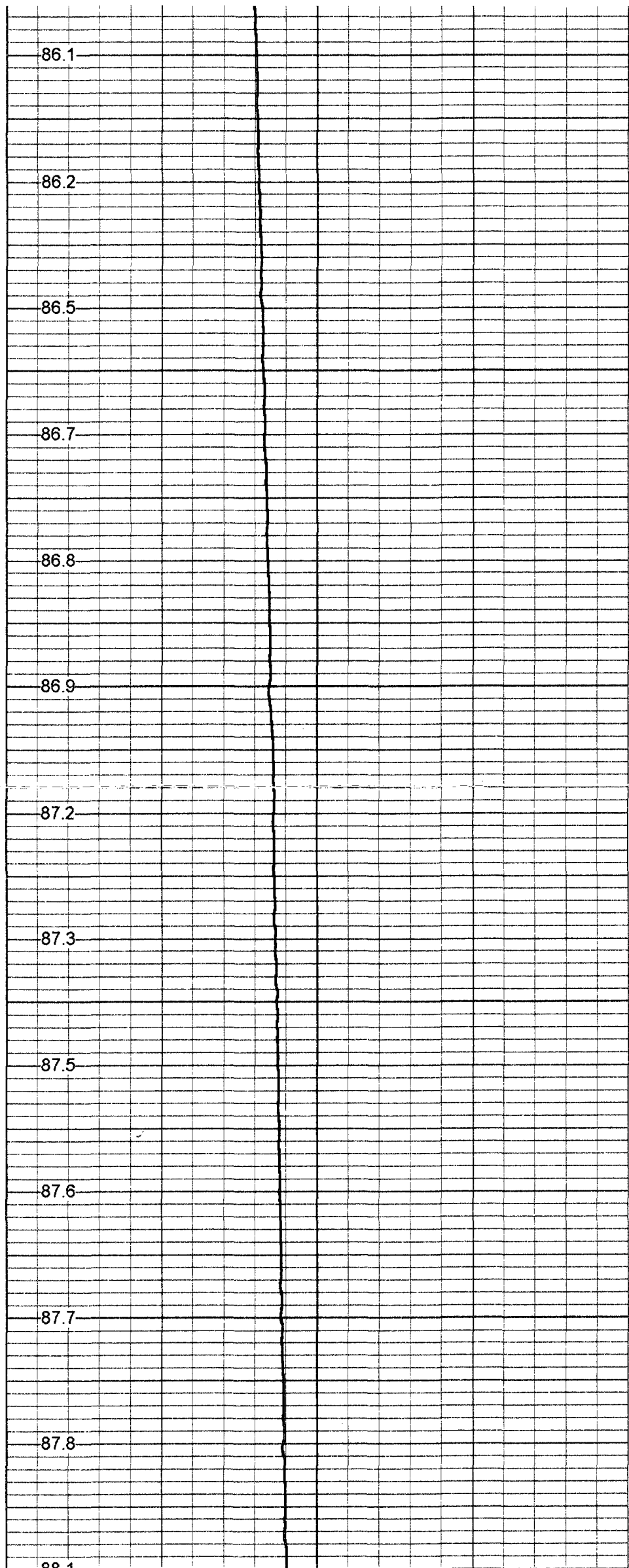
87.6

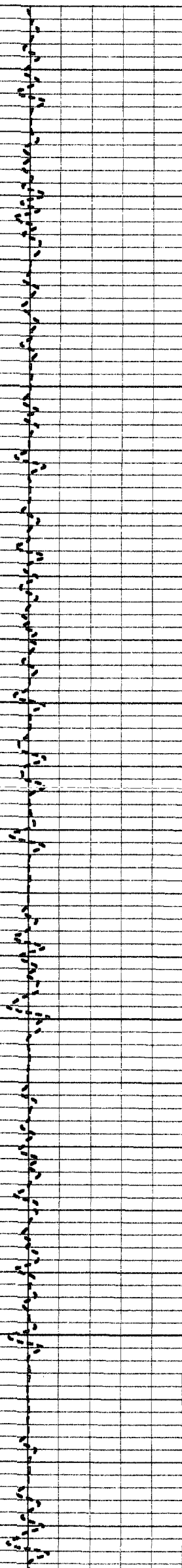
1200

87.7

87.8

88.1





1500

1550

1600

1650

1700

90.3

90.4

90.5

90.8

90.9

91.0

91.4

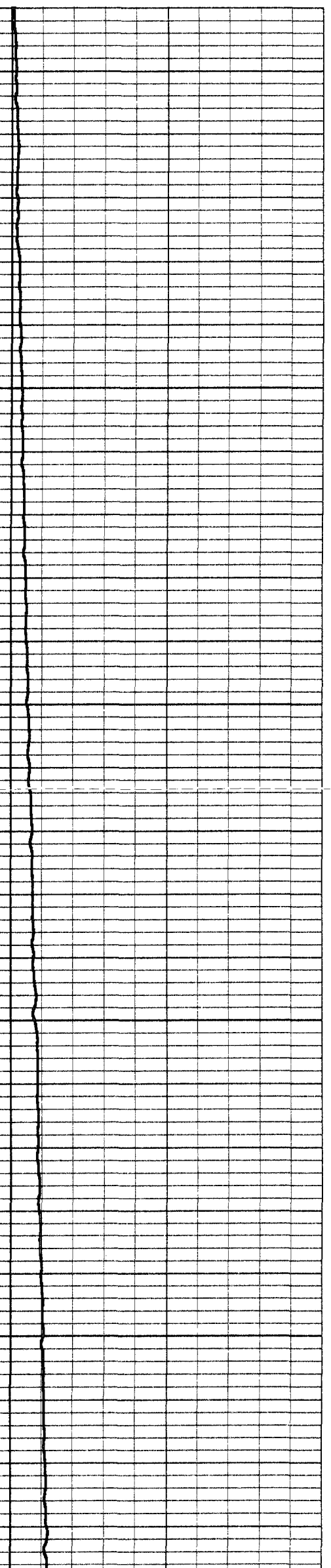
91.5

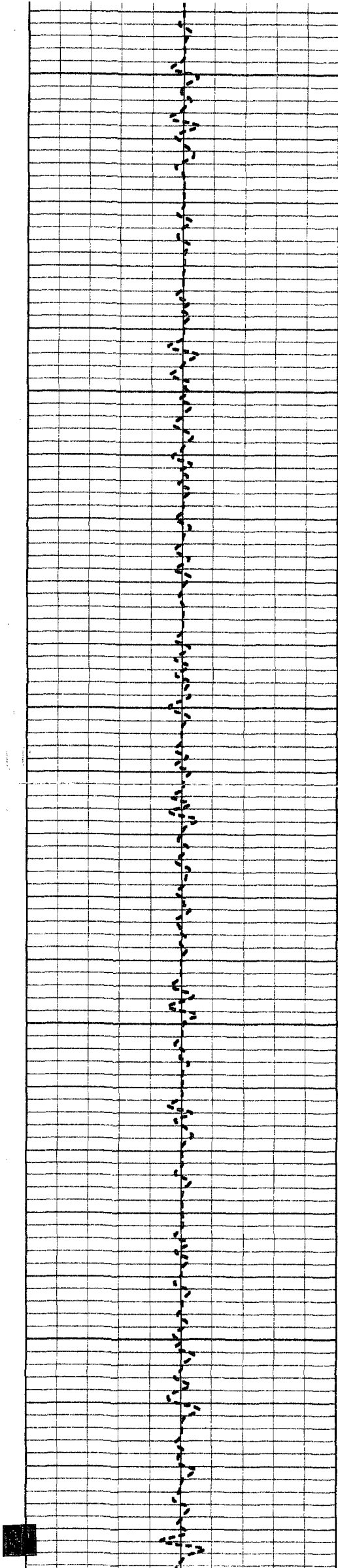
91.8

91.8

92.1

92.3





1750

92.4

92.5

92.7

1800

92.7

92.9

93.0

1850

93.1

93.3

1900

93.5

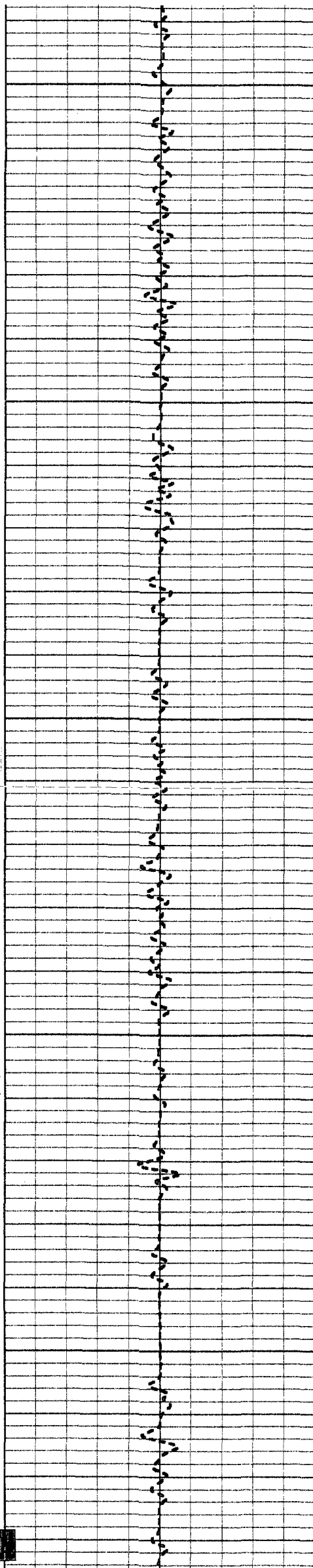
93.6

93.9

1950

93.9

94.3



2000

94.5

94.8

94.9

2050

95.0

95.0

2100

95.1

95.0

94.8

2150

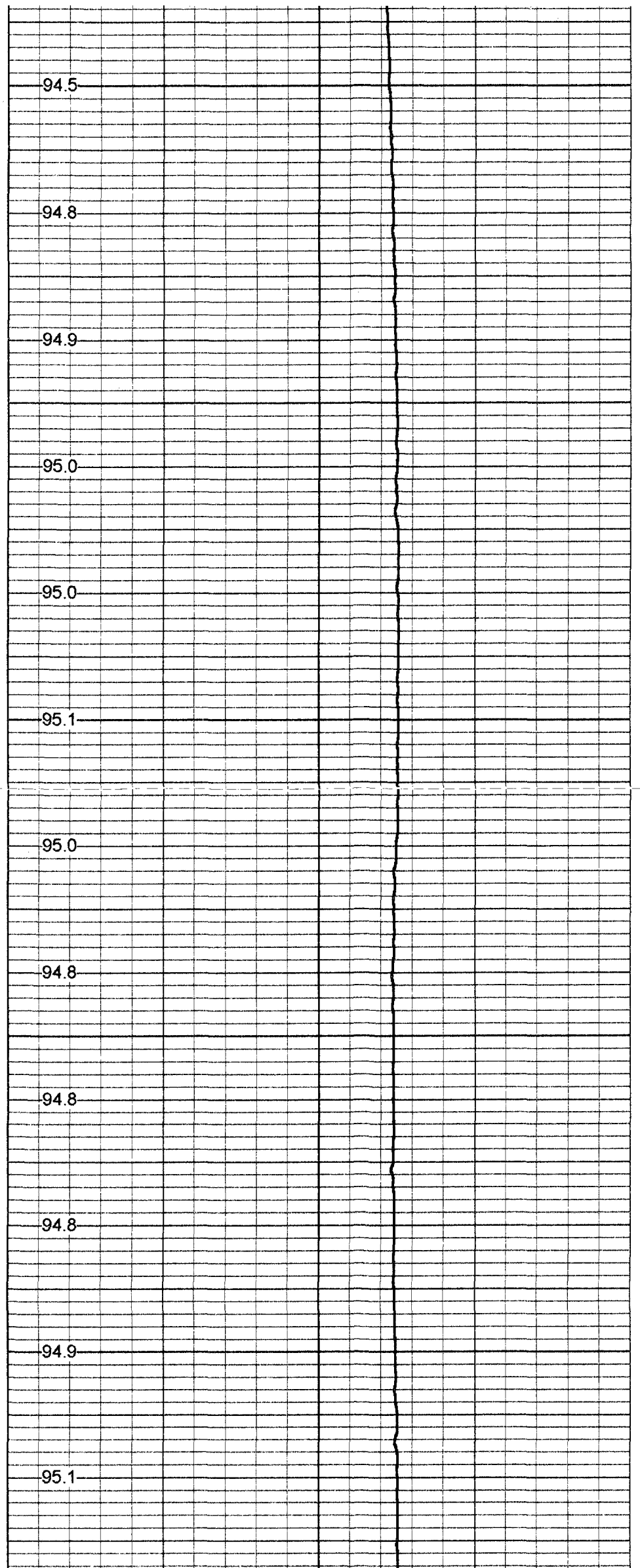
94.8

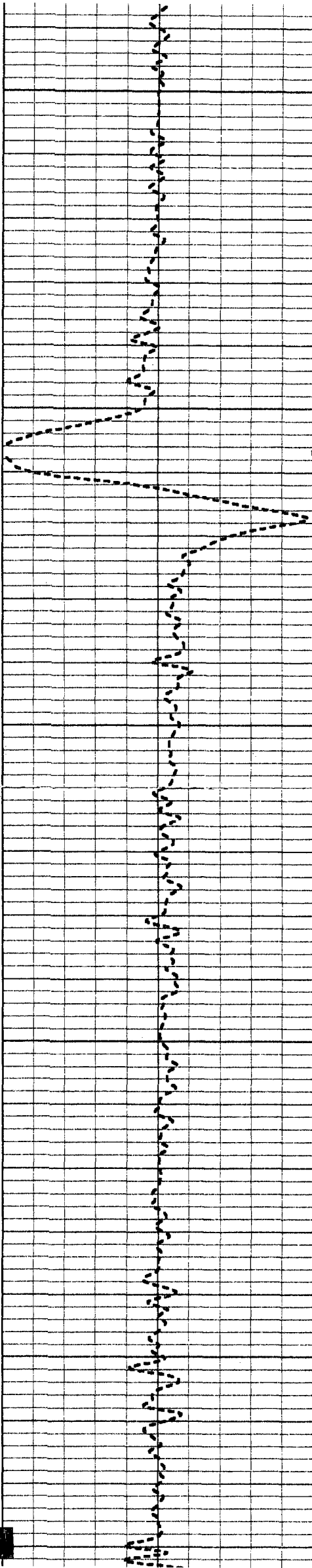
94.8

2200

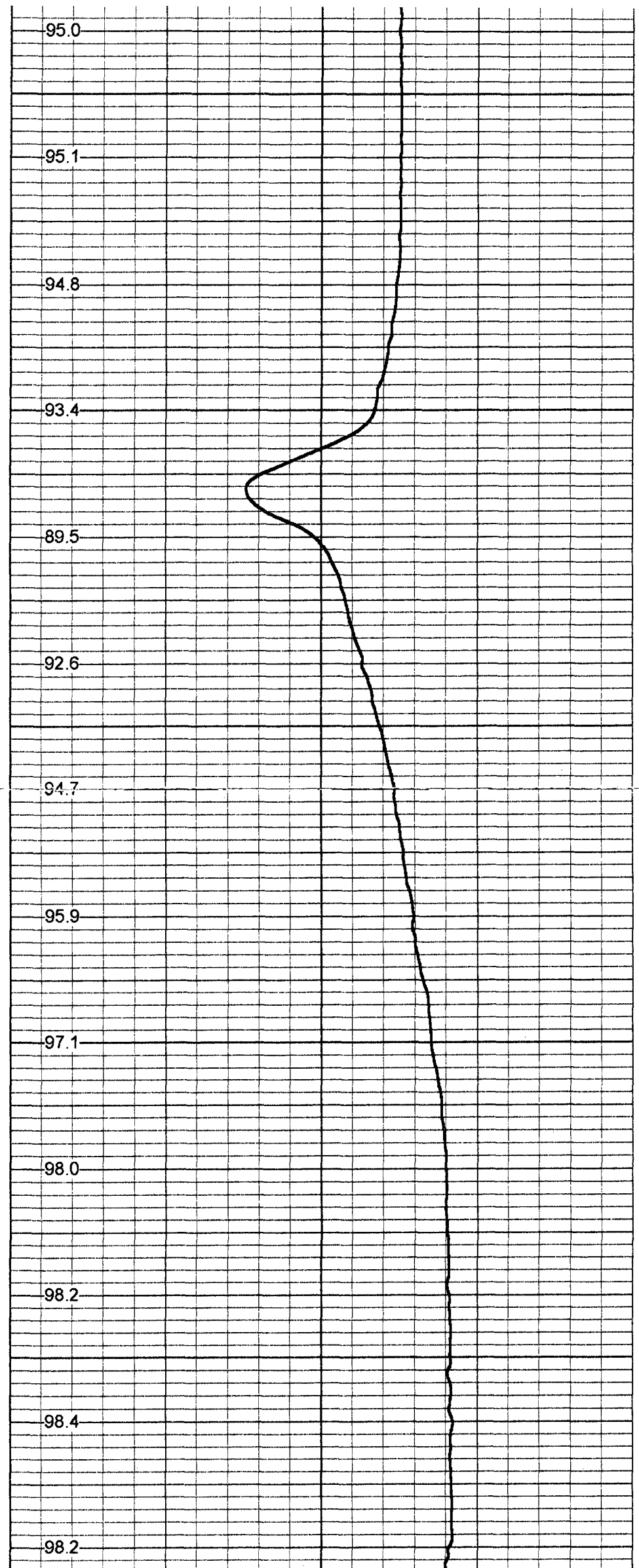
94.9

95.1

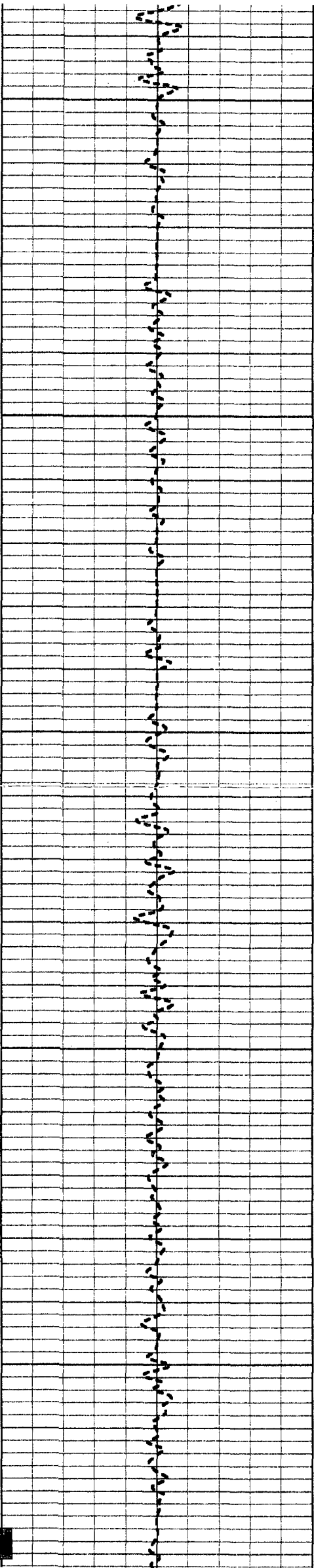




2250
2300
2350
2400
2450



95.0
95.1
94.8
93.4
89.5
92.6
94.7
95.9
97.1
98.0
98.2
98.4
98.2



2500

98.5

98.5

98.6

2550

98.6

98.7

2600

98.7

98.7

98.8

2650

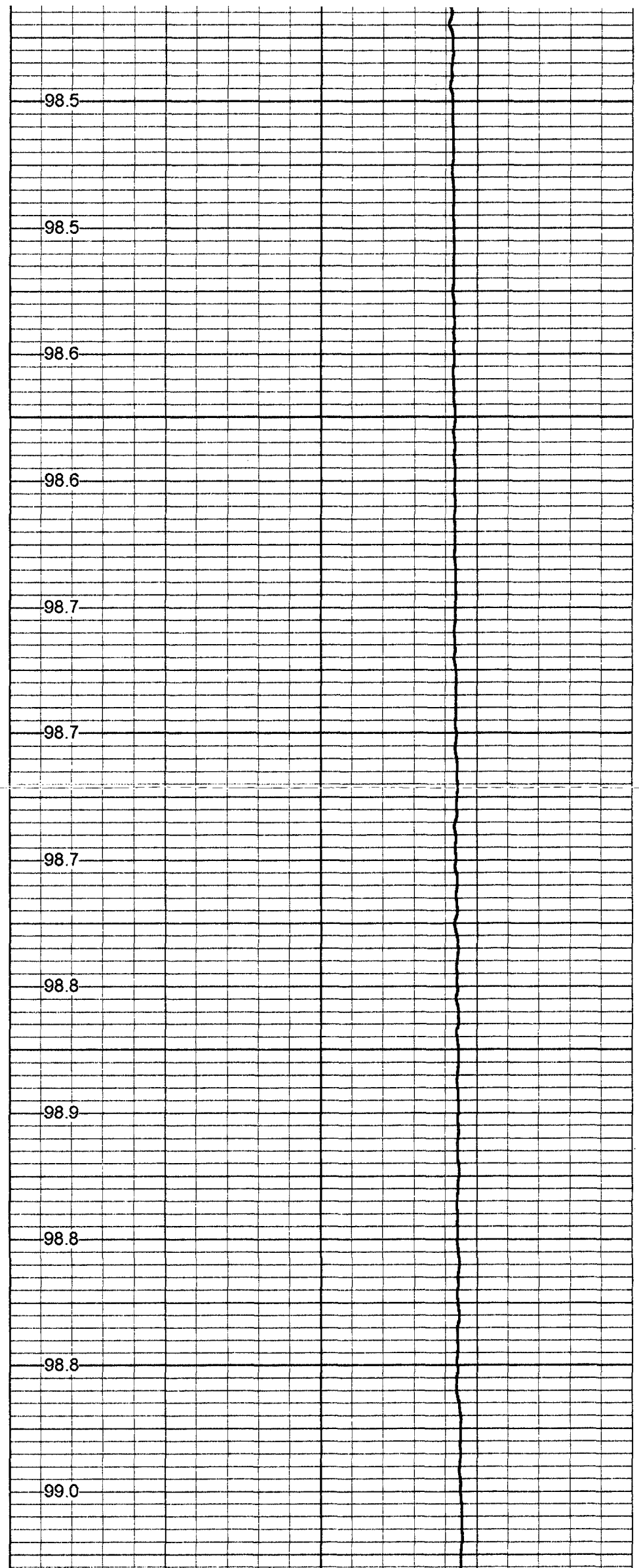
98.9

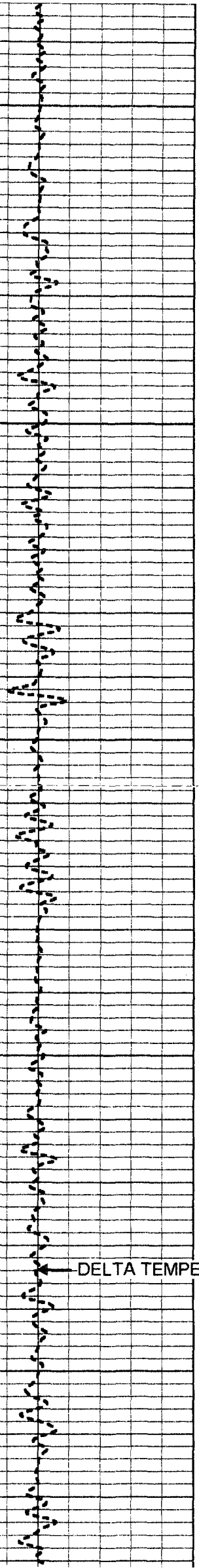
98.8

2700

98.8

99.0





DELTA TEMPERATURE

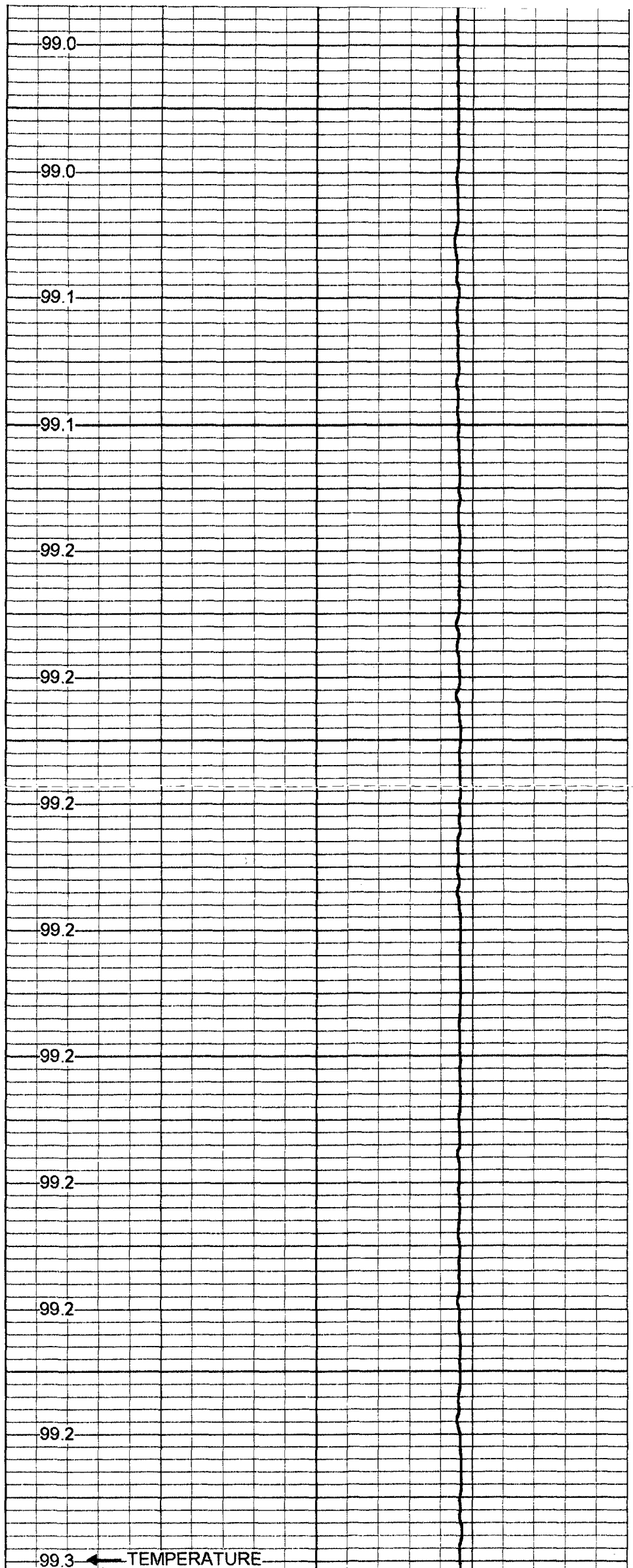
2750

2800

2850

2900

2950



99.0

99.0

99.1

99.1

99.2

99.2

99.2

99.2

99.2

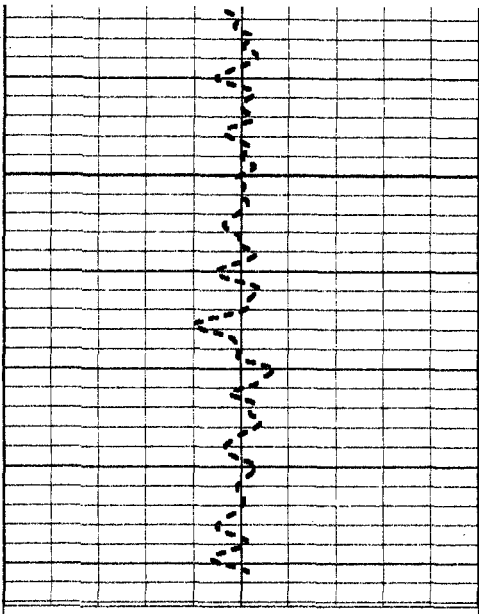
99.2

99.2

99.2

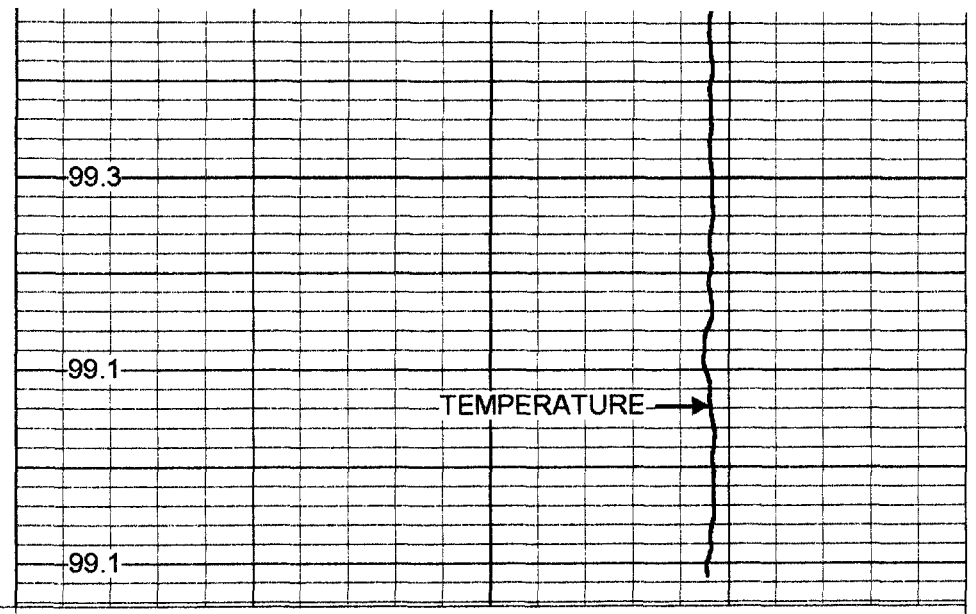
99.3

TEMPERATURE

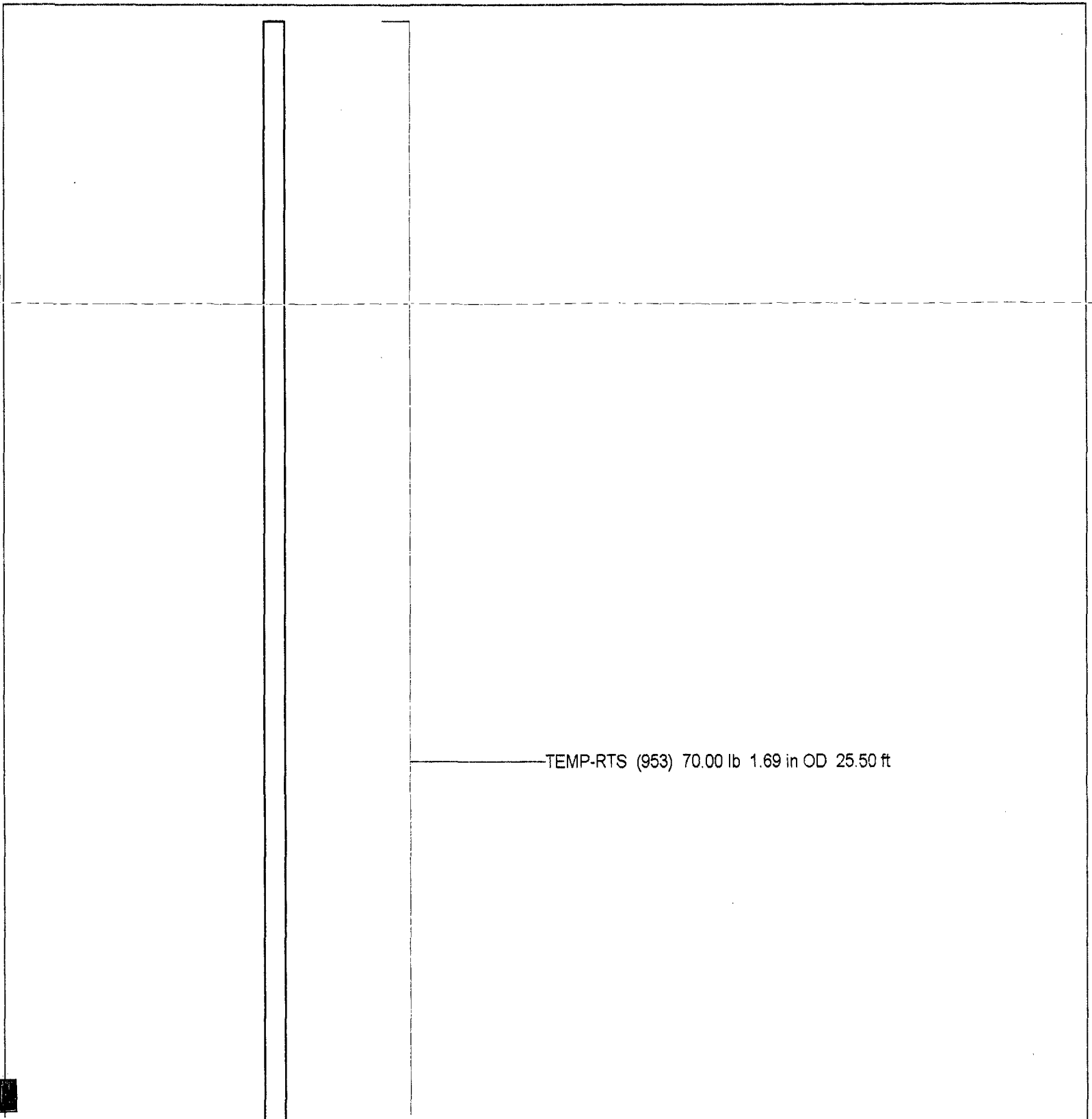


-1 DELTA TEMPERATURE (degF) 1

3000



70 TEMPERATURE (degF) 110



TEMP-RTS (953) 70.00 lb 1.69 in OD 25.50 ft

TEMP 0.10 ft

Dataset: run1/pass4
Total Length: 25.50 ft
Total Weight: 70.00 lb
O.D.: 1.69 in

Temperature Calibration Report

Serial Number: 953
Tool Model: RTS
Performed: Thu Sep 13 16:39:05 2001

Point #	Reading		Reference	
1	441.331	cps	37	degF
2	1006.52	cps	78	degF
3	2440.32	cps	160	degF