



**YOUNGQUIST
BROTHERS, Inc**

GEOPHYSICAL LOGGING DIVISION

**HIGH RESOLUTION
TEMPERATURE
LOG**

Company CITY OF FT. MYERS
Well IW-1
Field CH2M HILL
County LEE
State FLORIDA

Company CITY OF FT. MYERS
Well IW-1
Field CH2M HILL
County LEE
State FLORIDA

Location	ROWTP	Other Services RTS
Permanent Datum	PAD	Elevation
Log Measured From		K.B. D.F. 23.5'
Drilling Measured From		GL 20'
		Elevation 20'

Date	4/15/02
Run Number	ELEVEN
Depth Driller	3040'
Depth Logger	3040'
Bottom Logged Interval	3040'
Top Log Interval	2230'
Open Hole Size	12.25"
Type Fluid	WATER
Density / Viscosity	N/A
Max. Recorded Temp.	99.3 DEG F
Estimated Cement Top	N/A
Time Well Ready	ON ARRIVAL
Time Logger on Bottom	0730
Equipment Number	103
Location	FT. MYERS DENISON R. DEAN
Recorded By	CATHEY
Witnessed By	


Borehole Record		Tubing Record	
Run Number	Bit Size	From	To
THREE	34.5"	CASING	1660'
FIVE	26.5"	CASING	2305'
SIX	22"	CASING	2315'
SEVEN	12.25"	CASING	3040'

Casing Record		Weight	
Surface String	Size	Weight	Bottom
Surface String	36"	3.75	450'
Production String	28"	5.00	1650'
Liner	18"	5.00	2308'
	13.375"	FRP	2298'

<<< Fold Here >>>

All interpretations are opinions based on inferences from electrical or other measurements and we cannot and do not guarantee the accuracy or correctness of any interpretation, and we shall not, except in the case of gross or willful negligence on our part, be liable or responsible for any loss, costs, damages, or expenses incurred or sustained by anyone resulting from any interpretation made by any of our officers, agents or employees. These interpretations are also subject to our general terms and conditions set out in our current Price Schedule.

Comments



**YOUNGQUIST
BROTHERS, Inc**
GEOPHYSICAL LOGGING DIVISION

TEMPERATURE SURVEY

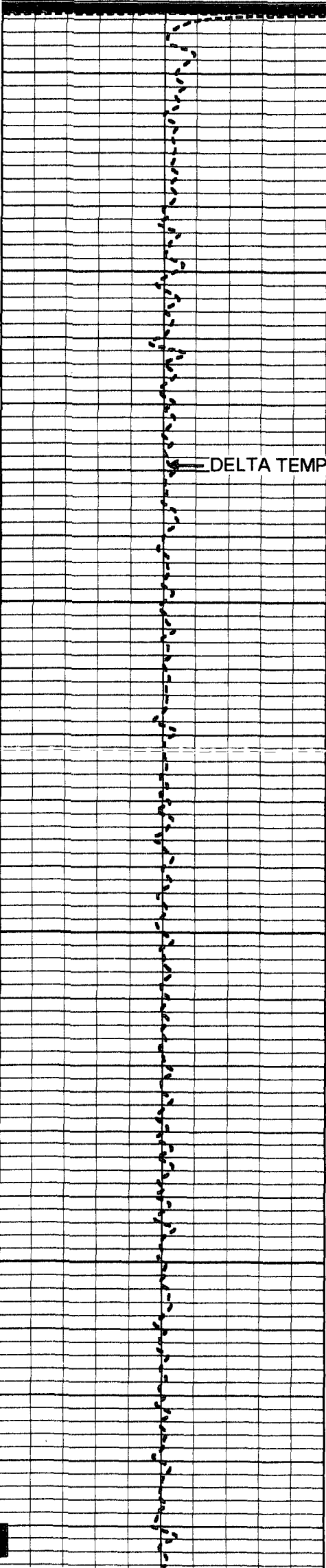
Database File: ftmiwrts.db
Dataset Pathname: pass4
Presentation Format: temp.prs
Dataset Creation: Mon Apr 15 07:14:47 2002 by Log VER 5.4

-1 DELTA TEMPERATURE (degF) 1

70

TEMPERATURE (degF)

110

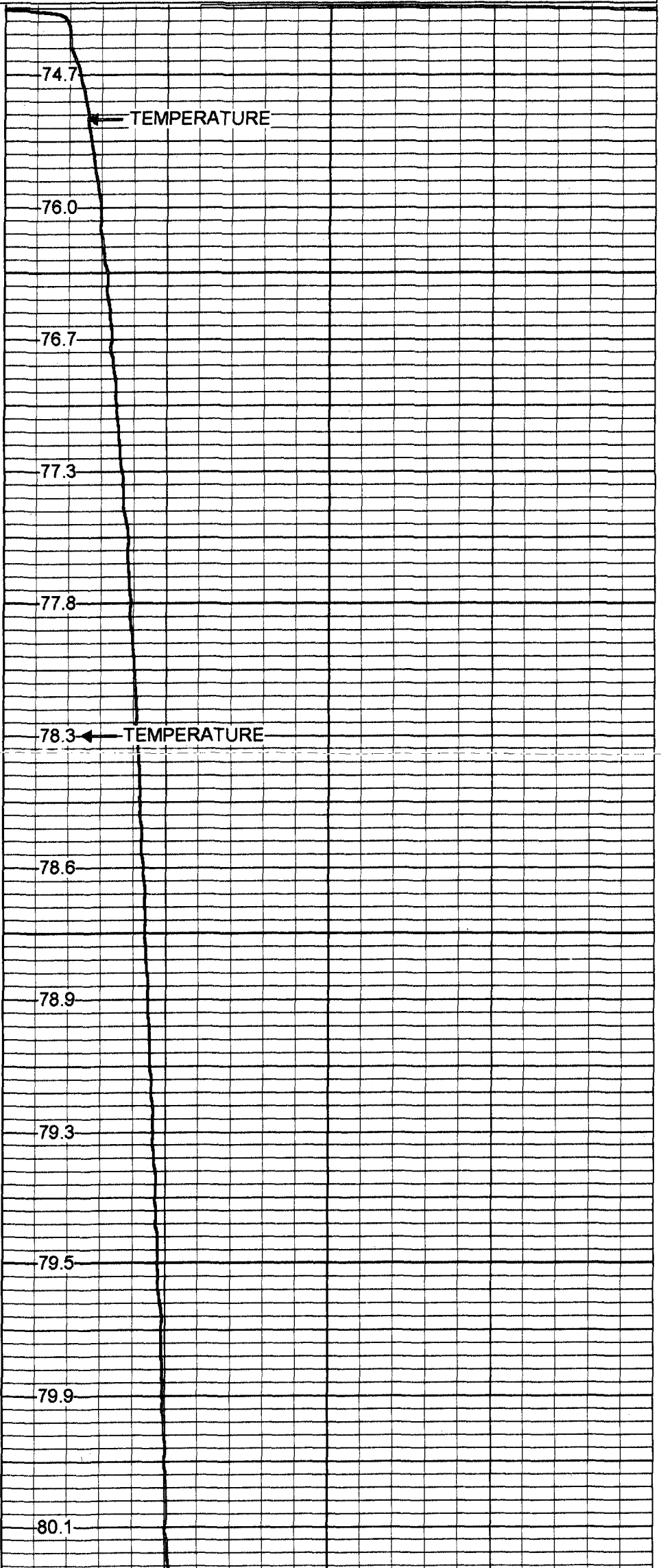


50

100

150

200



74.7

76.0

76.7

77.3

77.8

78.3

78.6

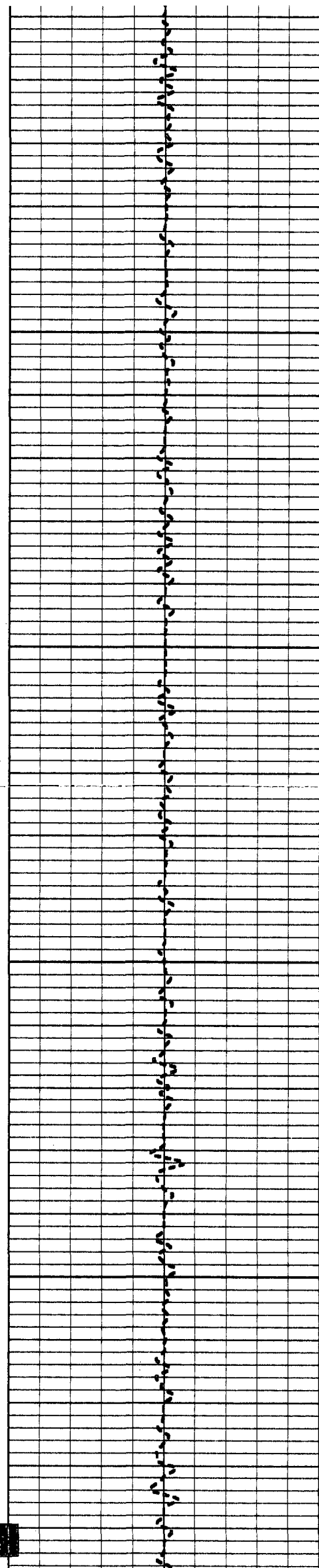
78.9

79.3

79.5

79.9

80.1



250

80.3

80.6

300

80.7

80.9

81.1

350

81.2

81.4

400

81.5

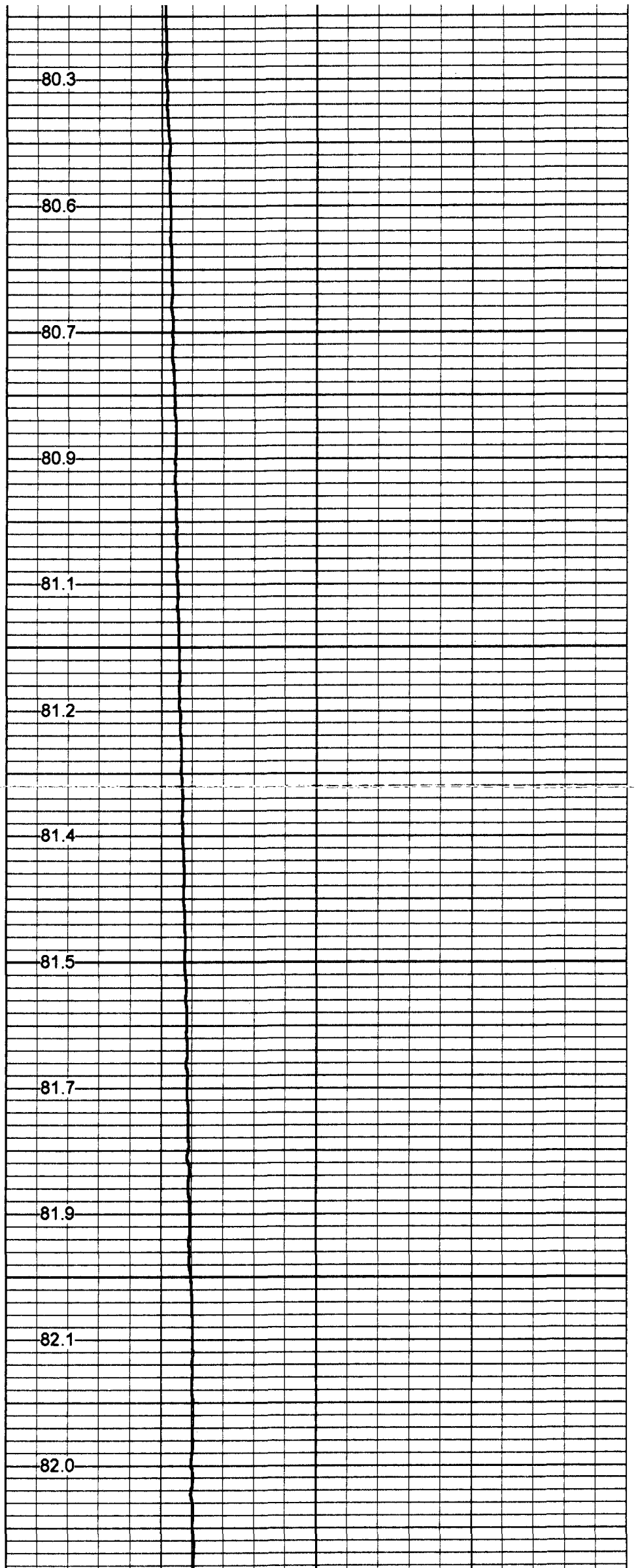
81.7

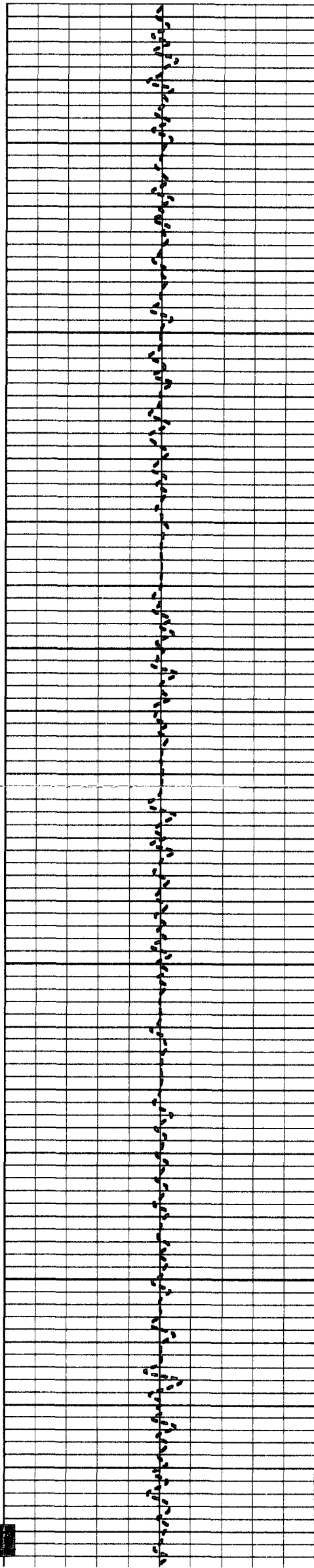
81.9

450

82.1

82.0





500

82.1

82.2

82.3

550

82.3

82.1

600

82.2

82.4

82.5

650

82.7

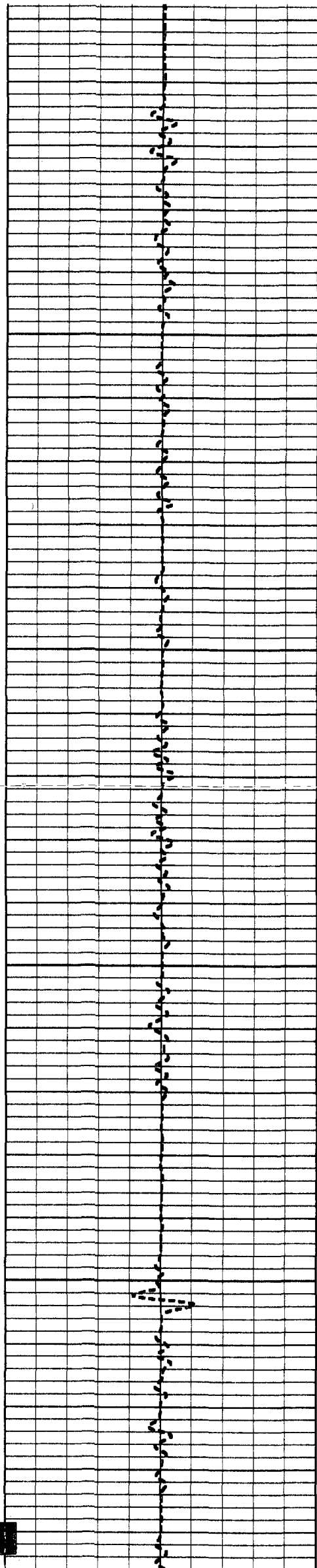
82.9

700

83.2

83.5

83.8



750

84.1

84.3

800

84.6

84.6

84.7

850

84.9

85.0

900

85.3

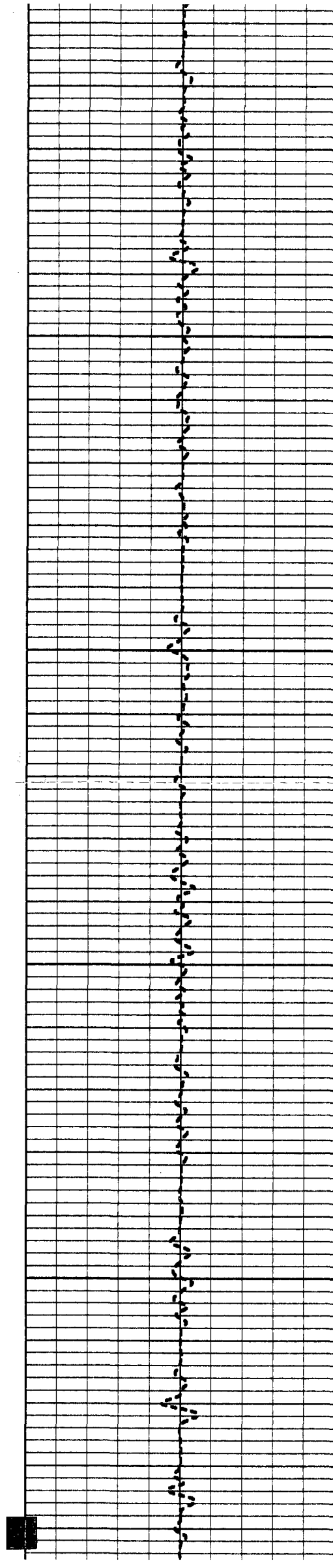
85.4

85.6

950

85.7

85.9



1000

86.1

86.2

86.5

1050

86.7

86.8

1100

86.9

87.2

87.3

1150

87.5

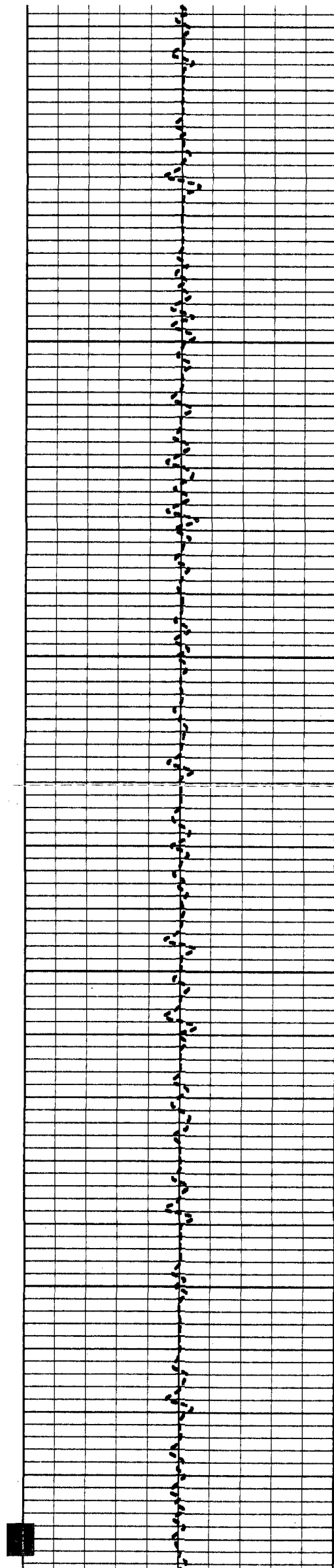
87.6

1200

87.7

87.8

88.1



1250

88.2

88.4

1300

88.5

88.6

88.9

1350

89.0

89.3

1400

89.5

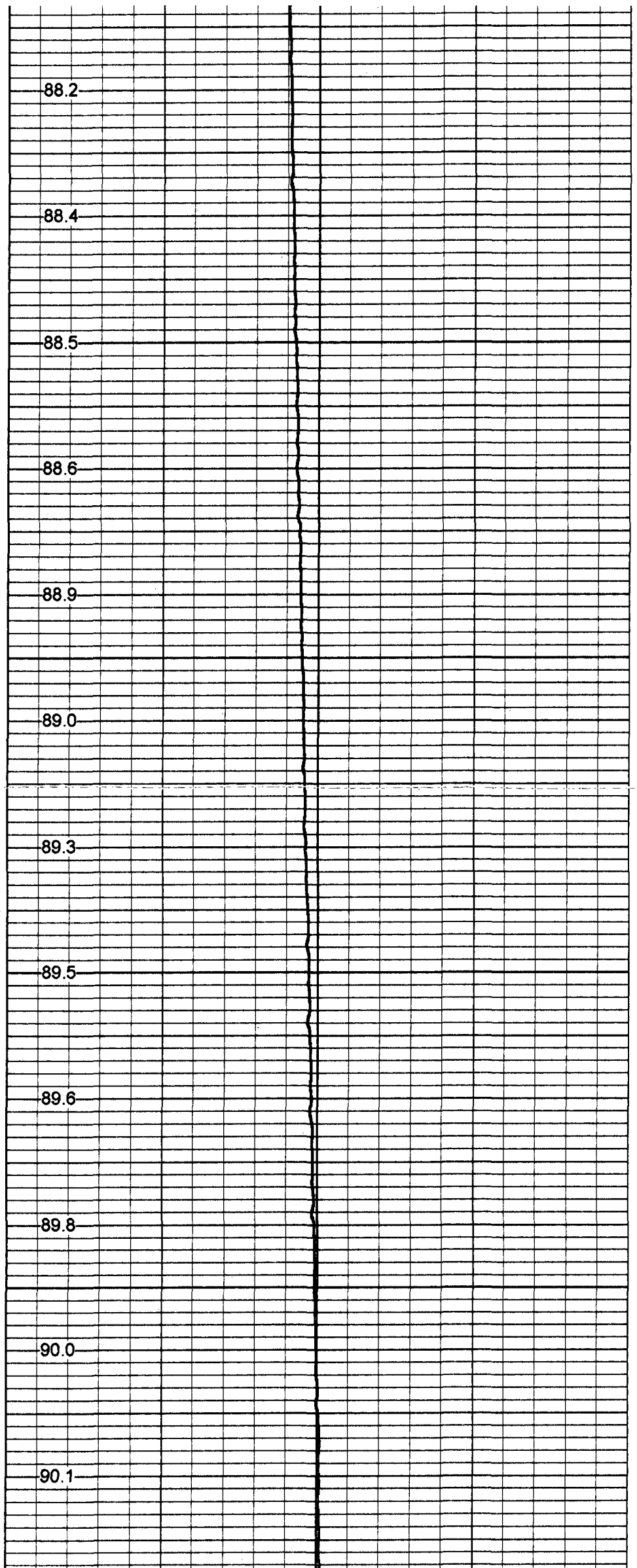
89.6

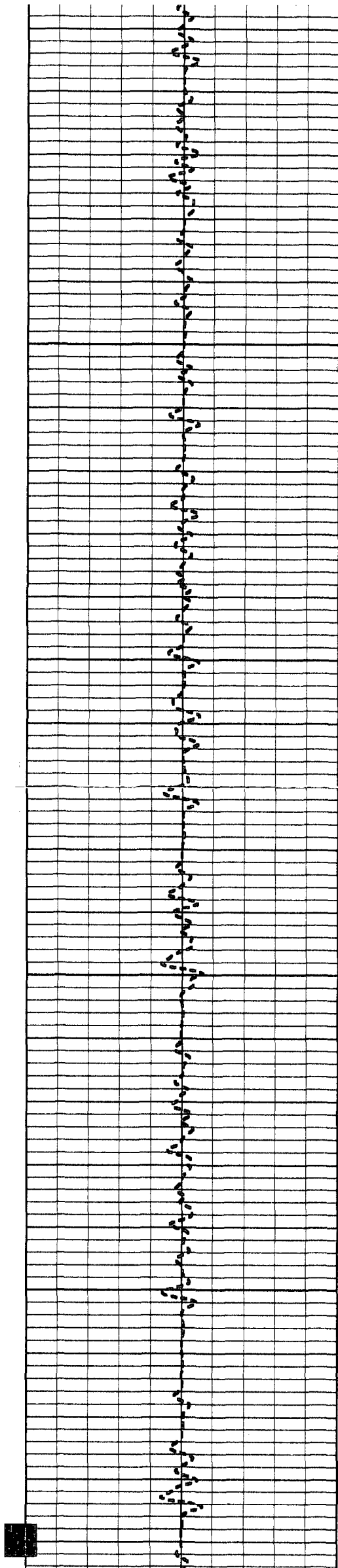
89.8

1450

90.0

90.1





1500

90.3

1550

90.4

90.5

1600

90.8

90.9

91.0

91.4

1650

91.5

91.8

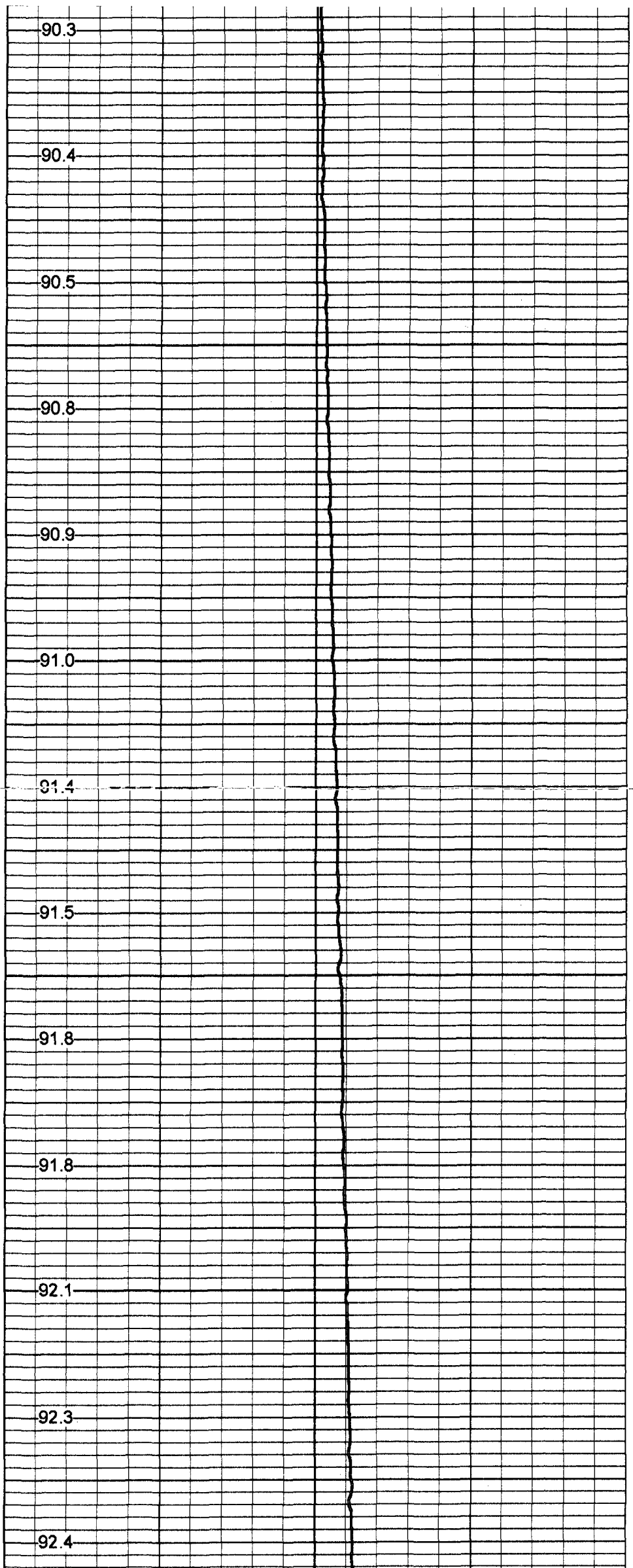
91.8

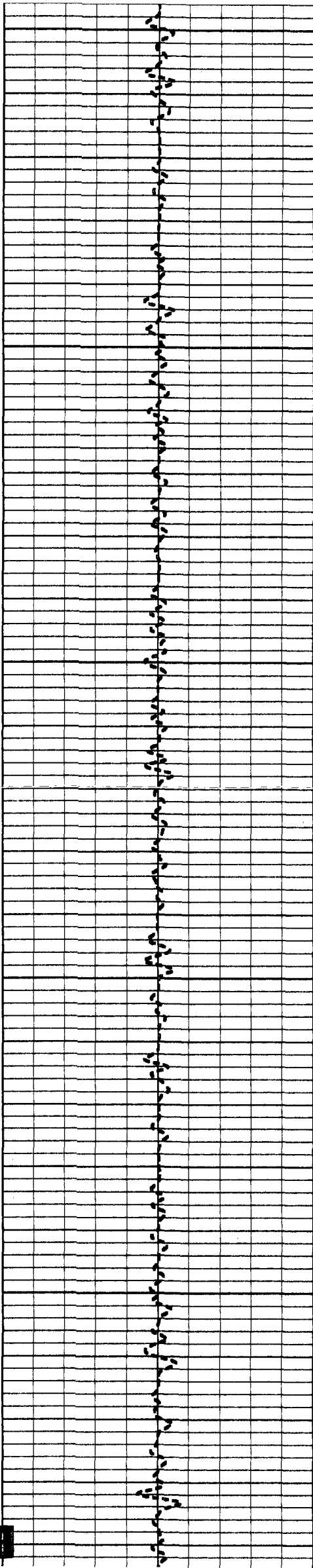
1700

92.1

92.3

92.4





1750

92.5

92.7

1800

92.7

92.9

93.0

1850

93.1

93.3

1900

93.5

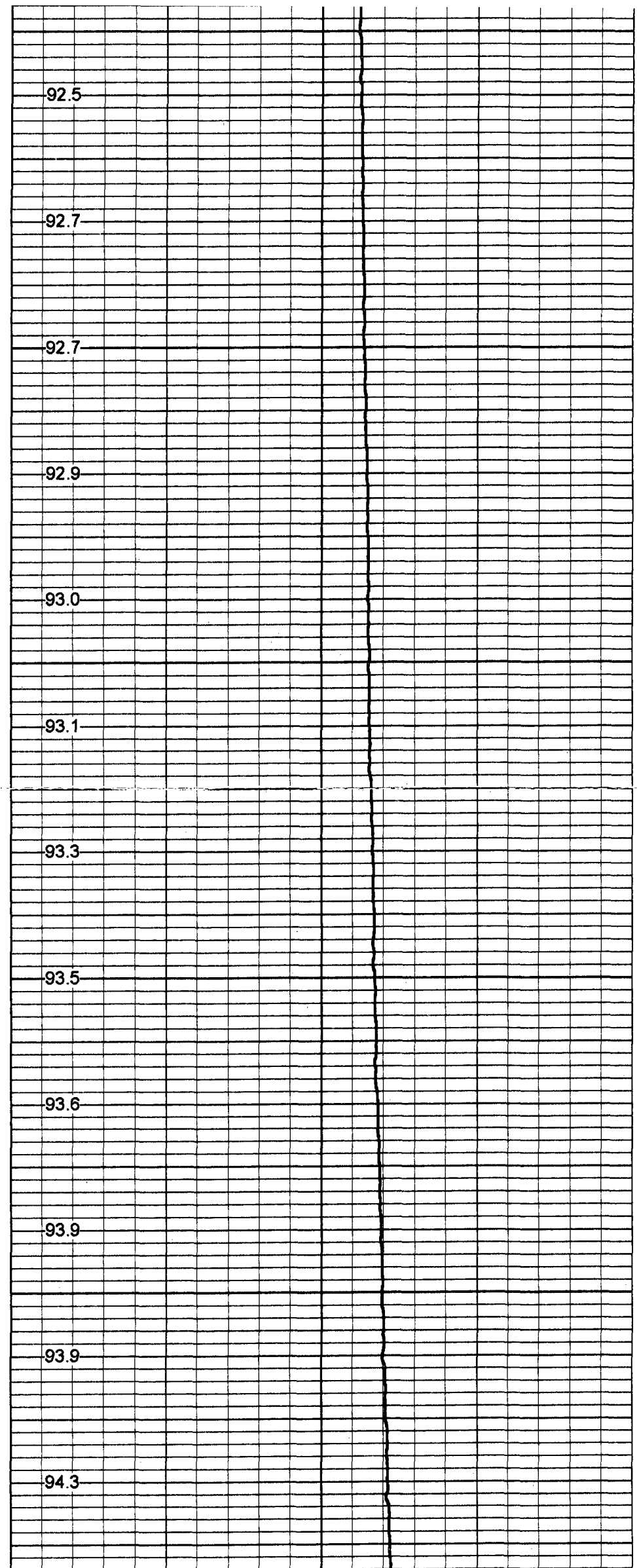
93.6

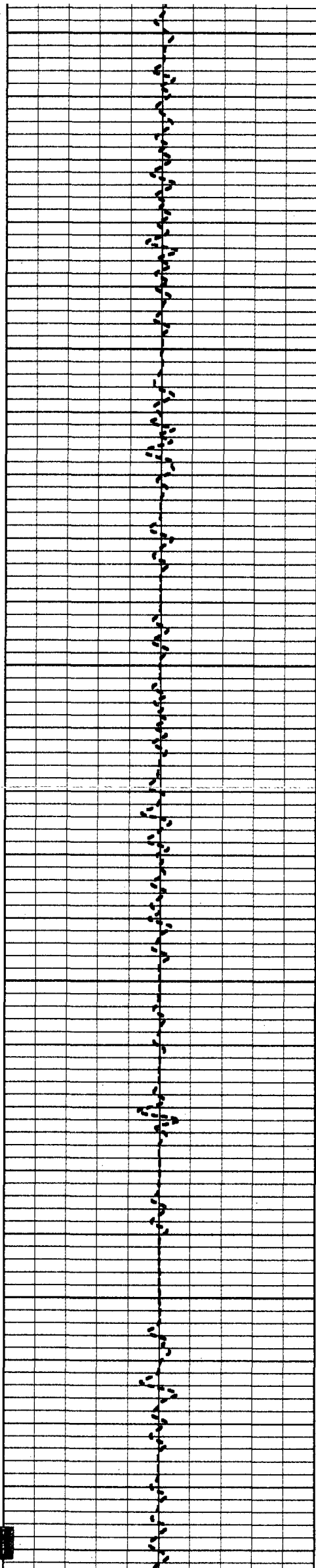
93.9

1950

93.9

94.3





2000

94.5

94.8

94.9

2050

95.0

95.0

2100

95.1

95.0

94.8

2150

94.8

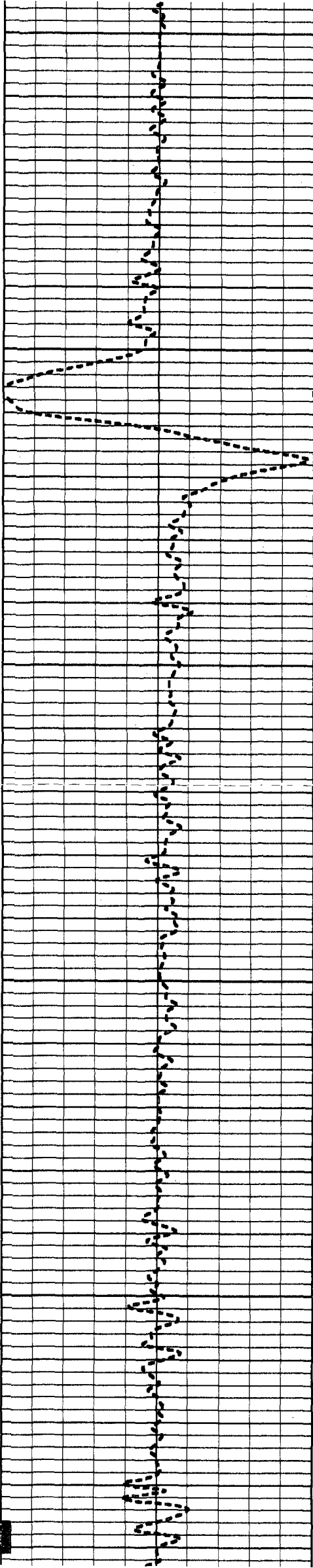
94.8

2200

94.9

95.1

95.0



2250

2300

2350

2400

2450

95.1

94.8

93.4

89.5

92.6

94.7

95.9

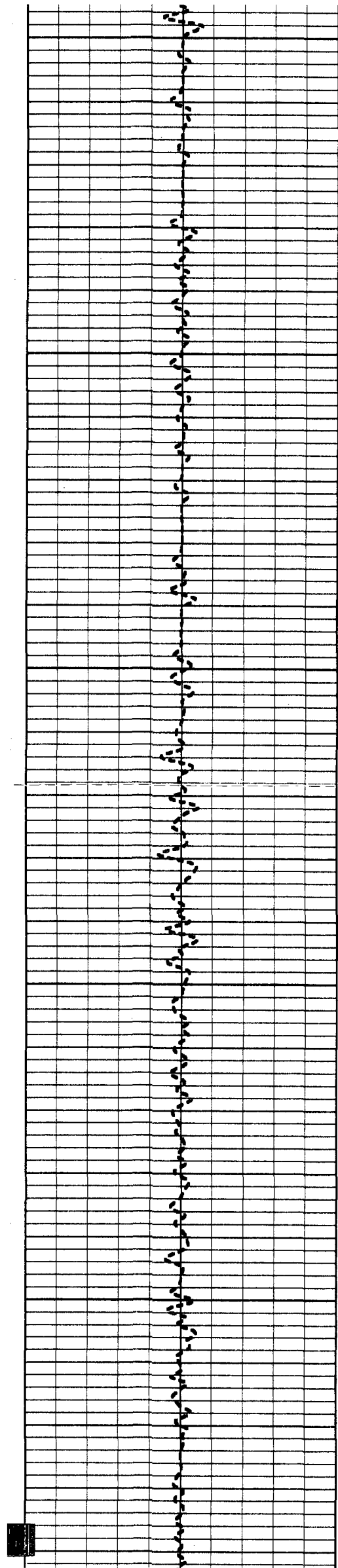
97.1

98.0

98.2

98.4

98.2



2500

98.5

98.5

98.6

2550

98.6

98.7

2600

98.7

98.7

98.8

2650

98.9

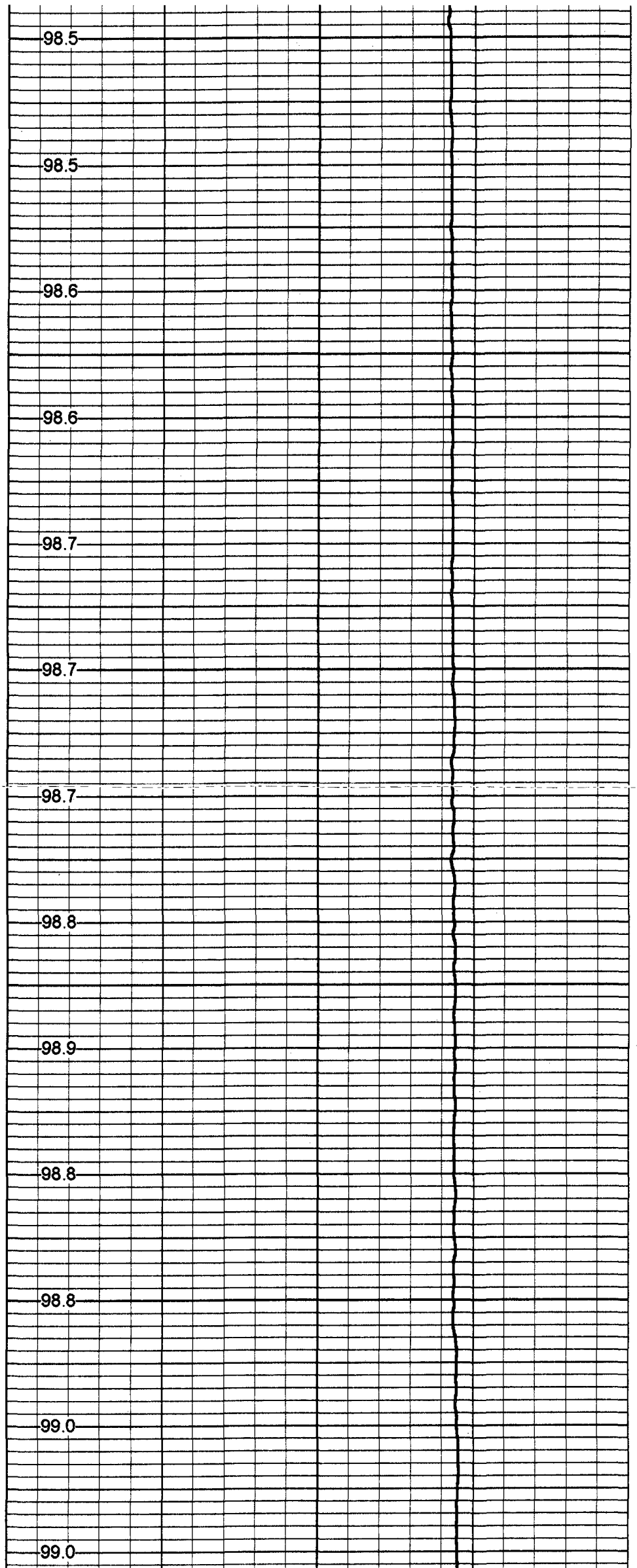
98.8

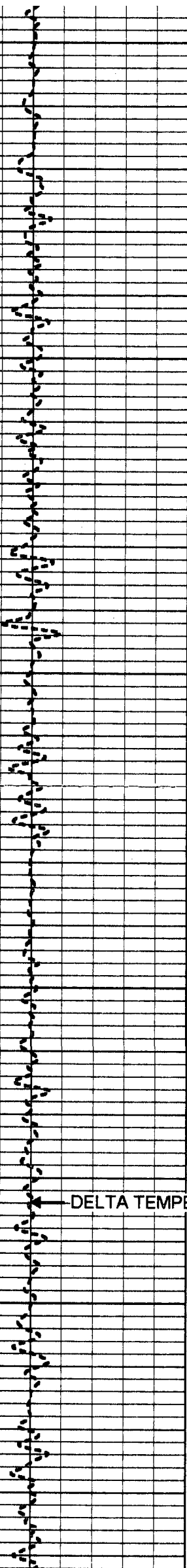
2700

98.8

99.0

99.0





2750

99.0

99.1

2800

99.1

99.2

99.2

2850

99.2

99.2

2900

99.2

99.2

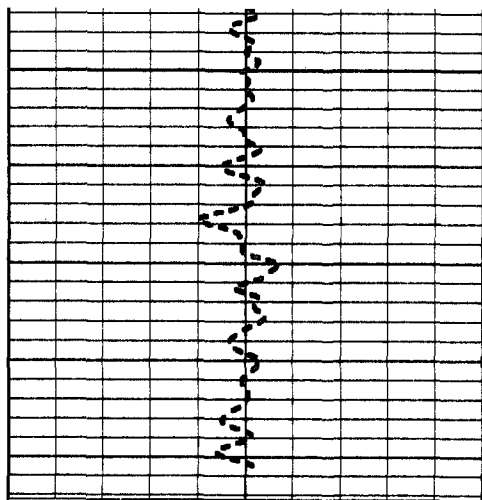
DELTA TEMPERATURE

99.2

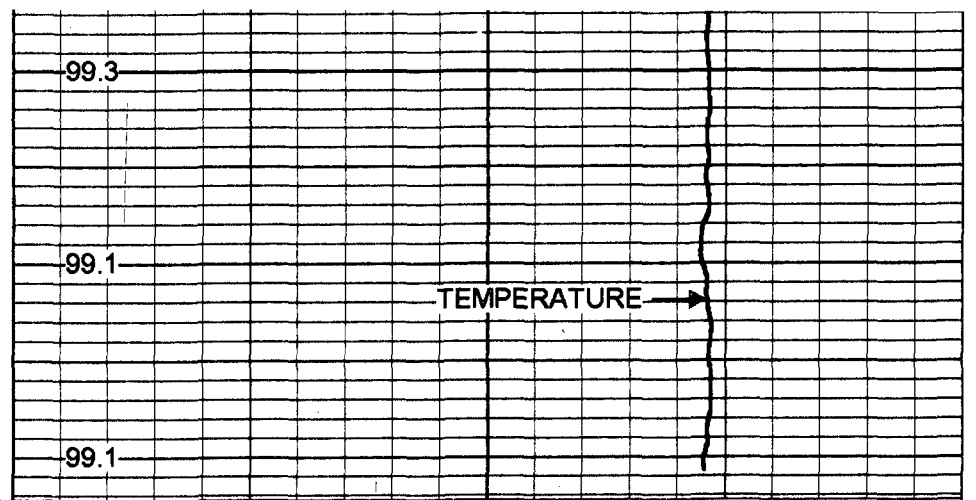
2950

99.2

99.3 ← TEMPERATURE



3000



99.3

99.1

TEMPERATURE →

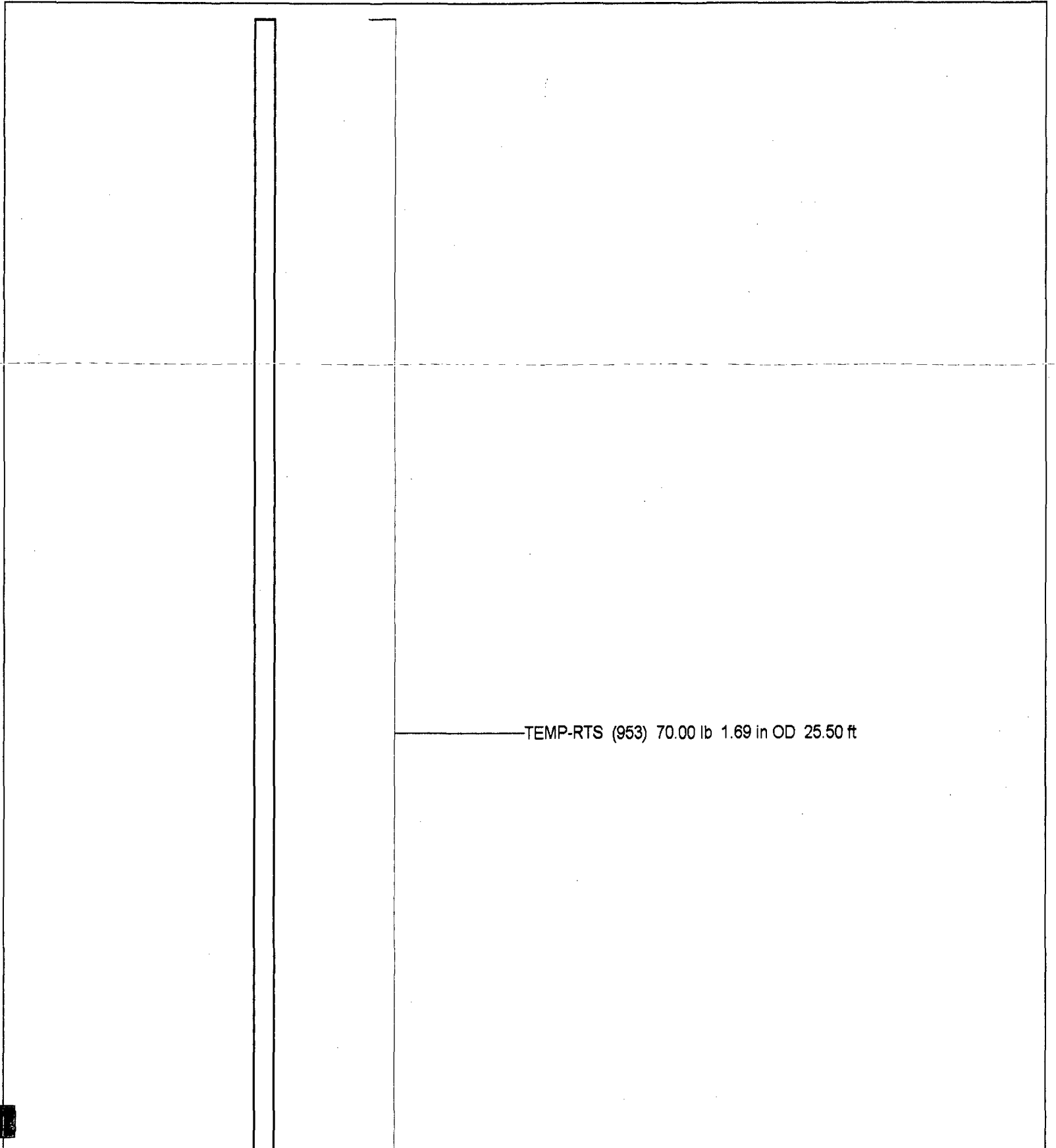
99.1

-1 DELTA TEMPERATURE (degF) 1

70

TEMPERATURE (degF)

110



TEMP-RTS (953) 70.00 lb 1.69 in OD 25.50 ft

TEMP 0.10 ft

Dataset: run1/pass4
Total Length: 25.50 ft
Total Weight: 70.00 lb
O.D. 1.69 in

Temperature Calibration Report

Serial Number: 953
Tool Model: RTS
Performed: Thu Sep 13 16:39:05 2001

Point #	Reading		Reference	
1	441.331	cps	37	degF
2	1006.52	cps	78	degF
3	2440.32	cps	160	degF