



GEOPHYSICAL LOGGING DIVISION

YOUNGQUIST BROTHERS, Inc

HIGH RESOLUTION TEMPERATURE LOG

LOG RECEIVED

JAN 23 2004

Company CH2M HILL
Well WRF DEEP IW #1
Field BONITA SPRINGS W.T.P.
County LEE
State FLORIDA

Company CH2M HILL
Well WRF DEEP IW #1
Field BONITA SPRINGS W.T.P.
County LEE
State FLORIDA

Location
Permanent Datum PAD
Log Measured From PAD
Drilling Measured From PAD
Elevation
Other Services
RTS
Elevation
K.B.
D.F.
G.L.

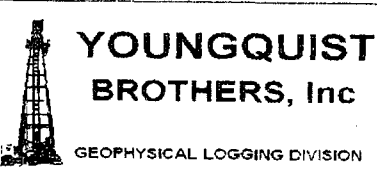
Date 9-JAN-2004
Run Number RTS
Depth Driller 3215'
Depth Logger 3200'
Bottom Logged Interval 3200'
Top Log Interval SURFACE
Open Hole Size 14.75"
Type Fluid WATER
Density / Viscosity NA
Max. Recorded Temp. NA
Estimated Cement Top NA
Time Well Ready 07/00
Time Logger on Bottom 0830
Equipment Number 103
Location FT. MYERS
Recorded By CATHEY
Witnessed By M. SCHILLING

Run Number	Borehole Record		Tubing Record				
	Bit	From	To	Size	Weight	From	To
ONE	12.25"	SURFACE	500'				
TWO	46.5"	SURFACE	455'				
THREE	12.25"	SURFACE	1750'				
FOUR	12.25"	SURFACE	3220'				

Casing Record
Surface String 38"
Prot. String 26"
Production String 16"
Liner
Wgt/H
375
375
500
Top
SURFACE
SURFACE
SURFACE
Bottom
450'
1650'
2490'

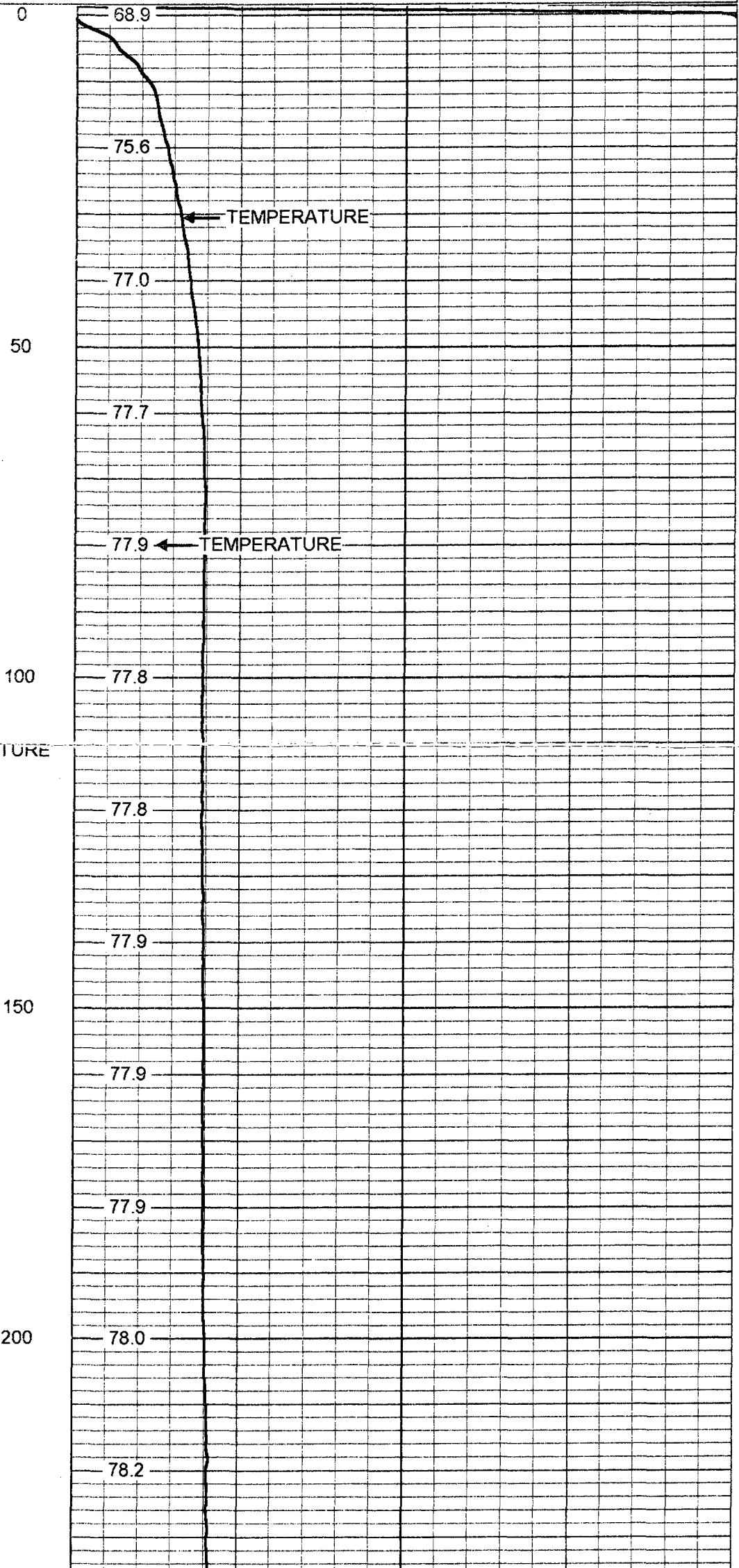
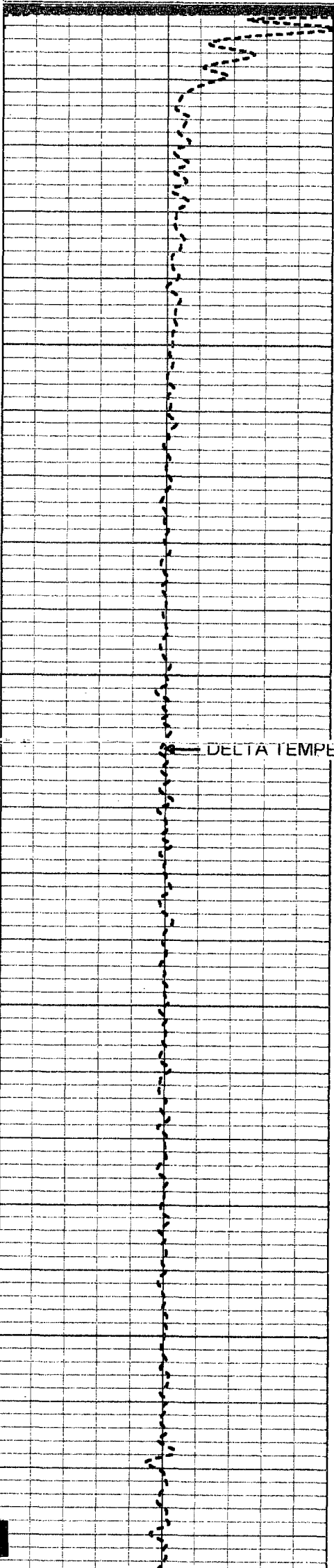
All interpretations are opinions based on inferences from electrical or other measurements and we cannot and do not guarantee the accuracy or correctness of any interpretation, and we shall not, except in the case of gross or willful negligence on our part, be liable or responsible for any loss, costs, damages, or expenses incurred or sustained by anyone resulting from any interpretation made by any of our officers, agents or employees. These interpretations are also subject to our general terms and conditions set out in our current Price Schedule.

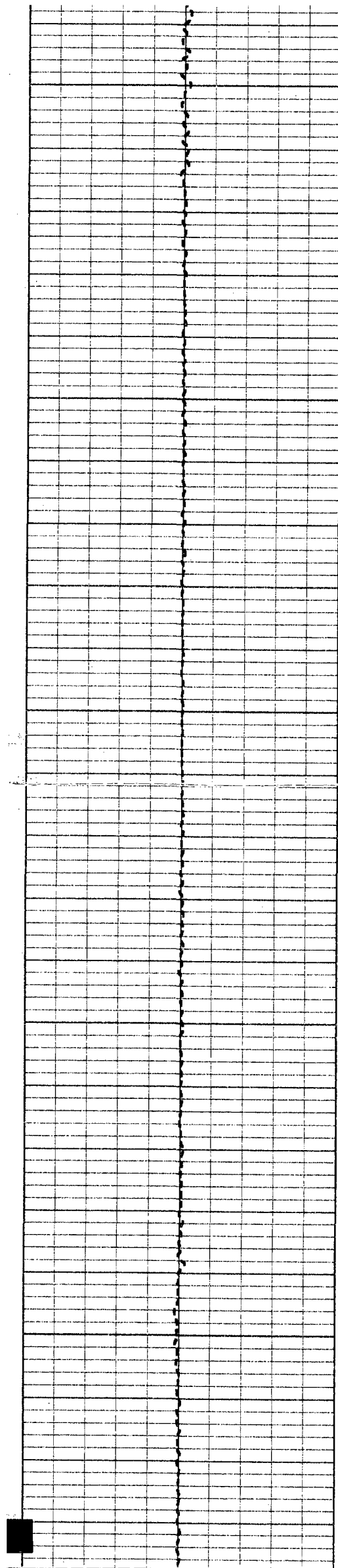
Comments



TEMPERATURE

Database File: bswrfrts.db
Dataset Pathname: pass1
Presentation Format: temp
Dataset Creation: Fri Jan 09 07:39:15 2004 by Log 6.2_B4





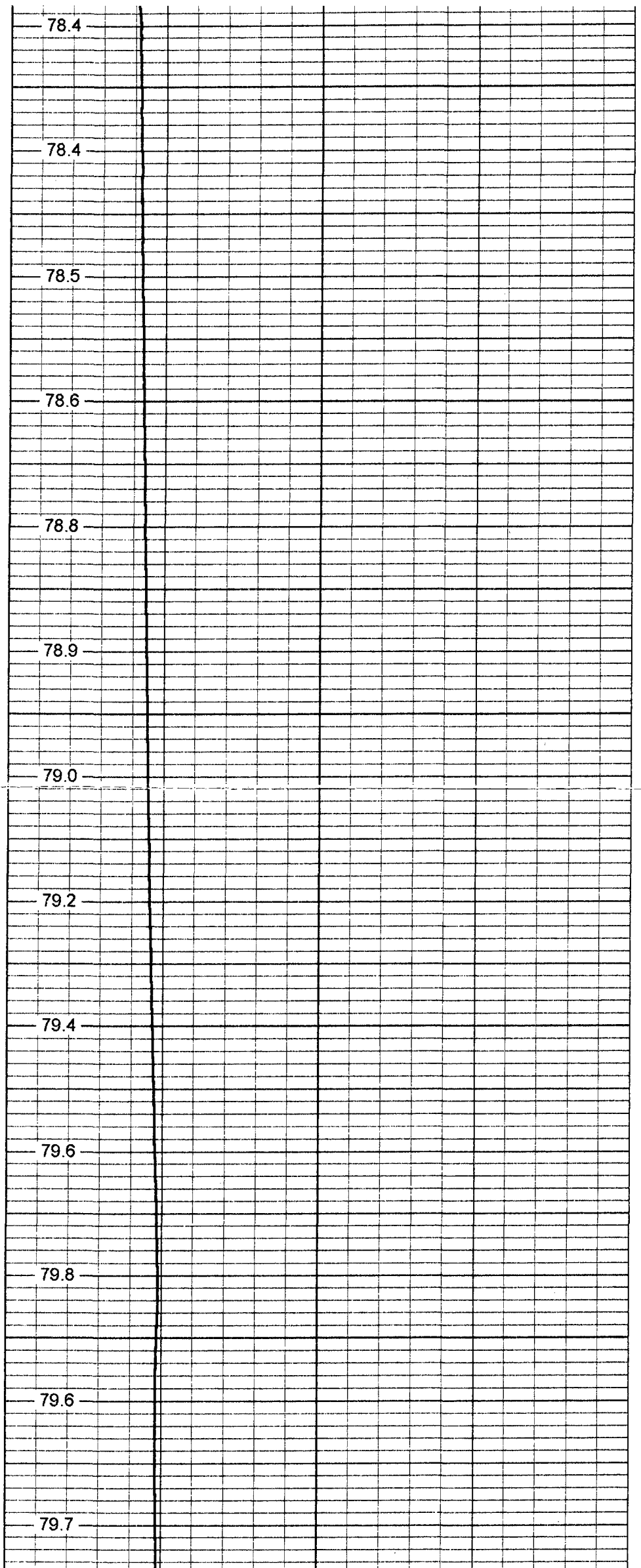
250

300

350

400

450



78.4

78.4

78.5

78.6

78.8

78.9

79.0

79.2

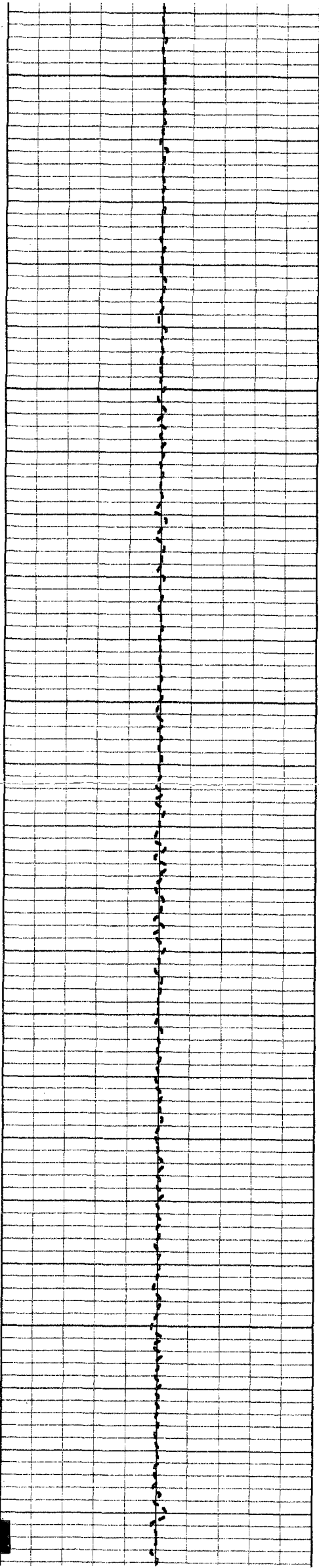
79.4

79.6

79.8

79.6

79.7



500

79.8

80.0

80.1

550

80.2

80.3

600

80.4

80.4

80.6

650

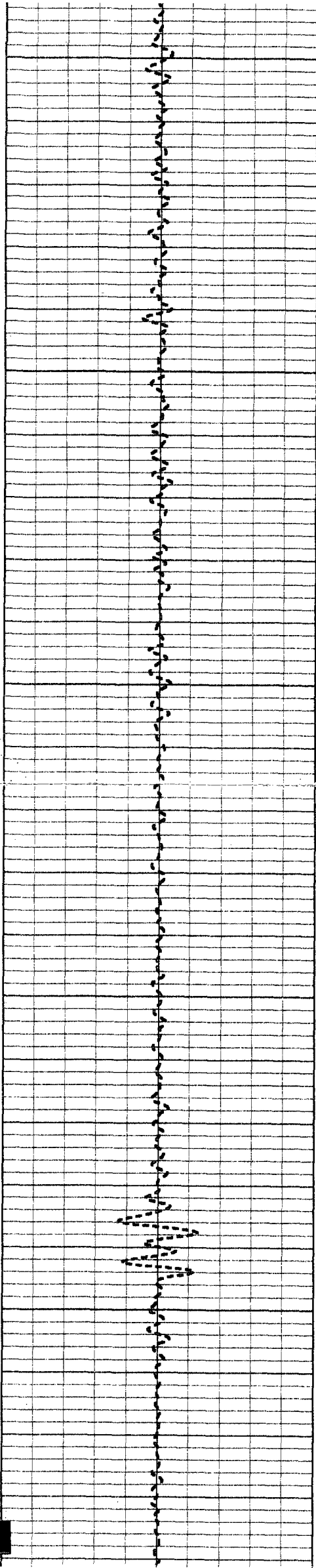
80.7

80.9

700

80.9

81.0



1000

82.5

82.4

82.4

1050

82.4

82.5

1100

82.6

82.6

82.7

1150

82.8

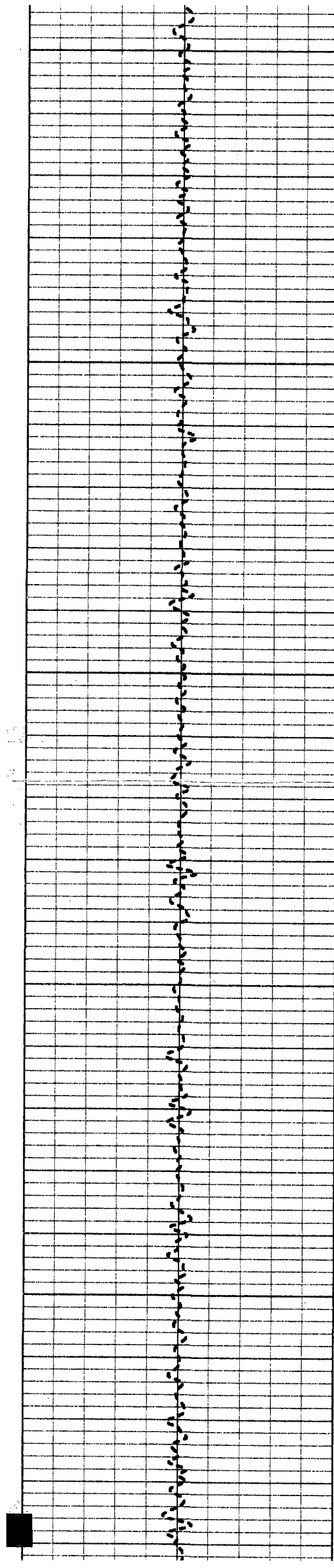
83.0

1200

83.0

83.2

83.2



1250

83.4

83.4

1300

83.5

83.6

83.7

1350

83.8

84.0

1400

84.1

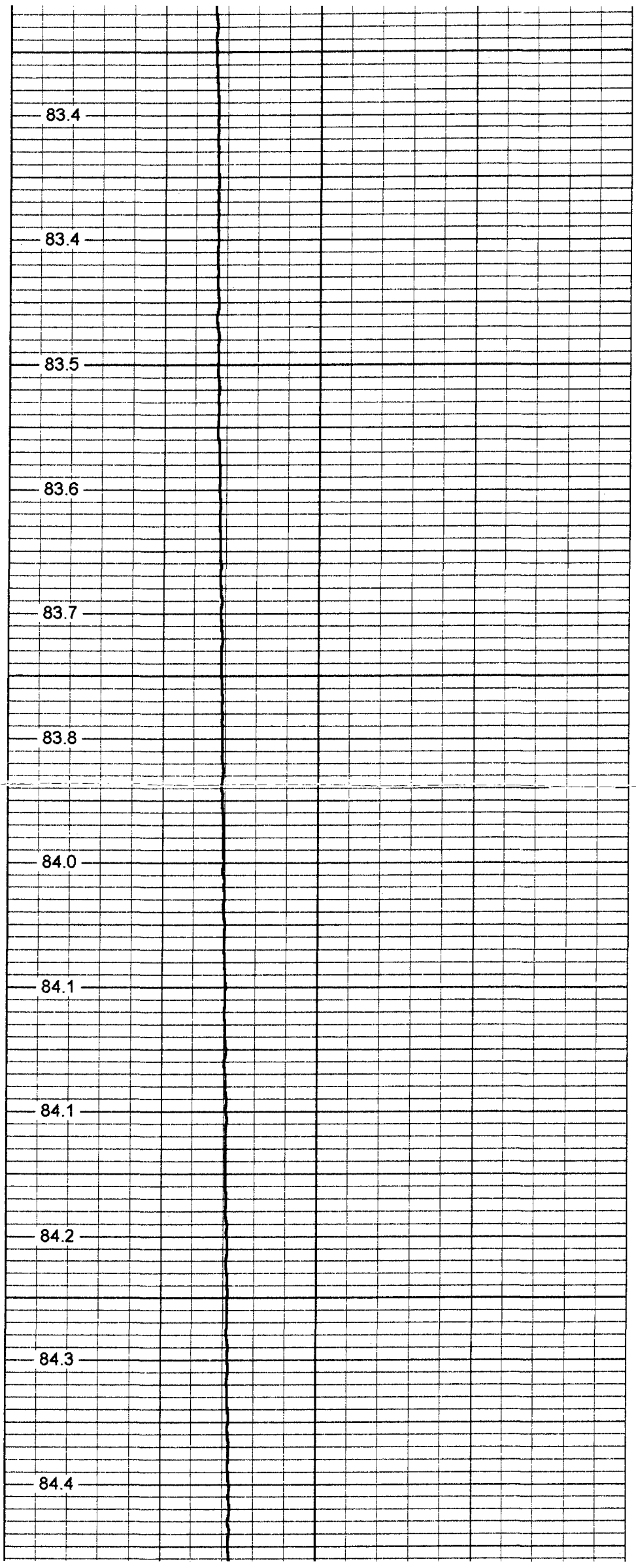
84.1

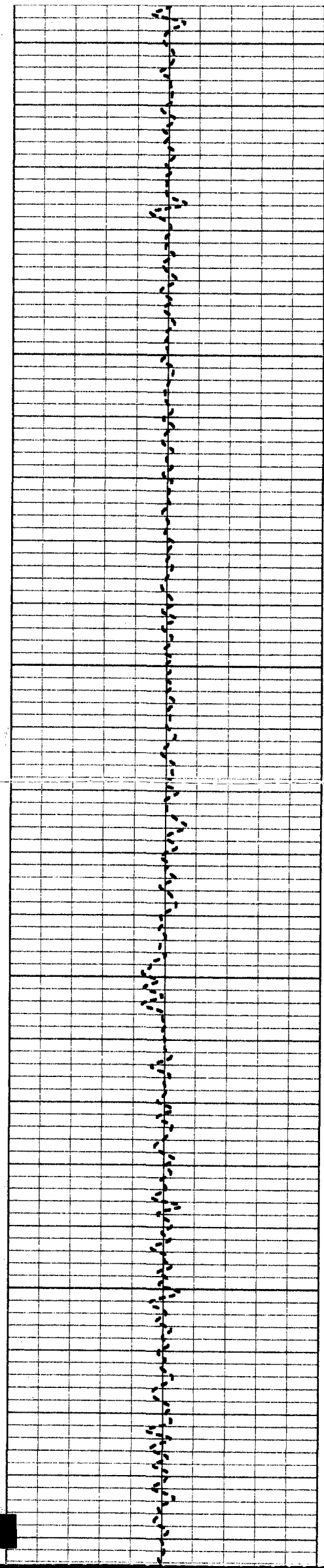
84.2

1450

84.3

84.4





1500

84.5

84.5

84.5

1550

84.6

84.7

1600

84.9

85.4

86.2

1650

85.3

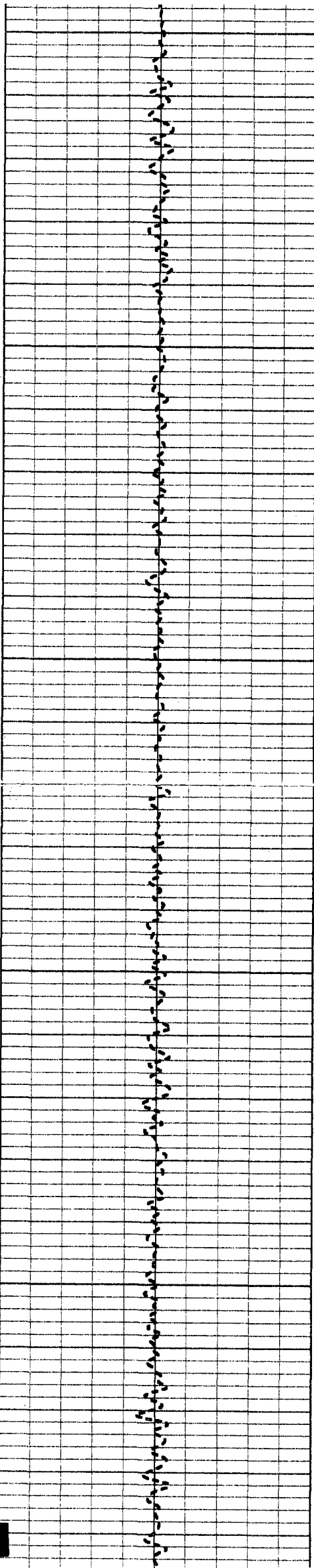
85.4

1700

85.6

85.7

85.8



1750

85.8

85.9

1800

86.1

86.3

86.4

1850

86.5

86.7

1900

86.7

87.0

87.1

1950

86.9

87.2



2000

87.3

87.1

87.4

2050

87.5

87.4

2100

87.4

87.5

87.6

2150

87.7

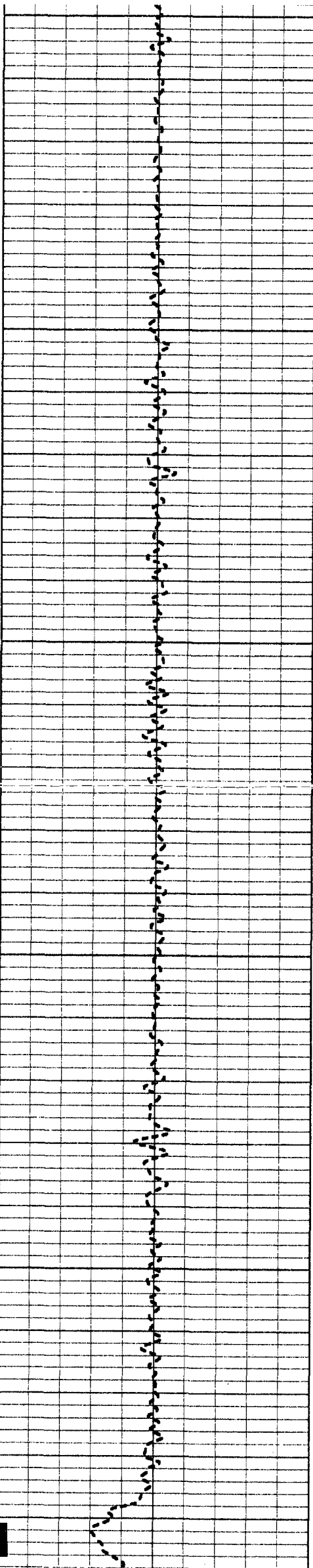
87.7

2200

87.8

88.0

88.0



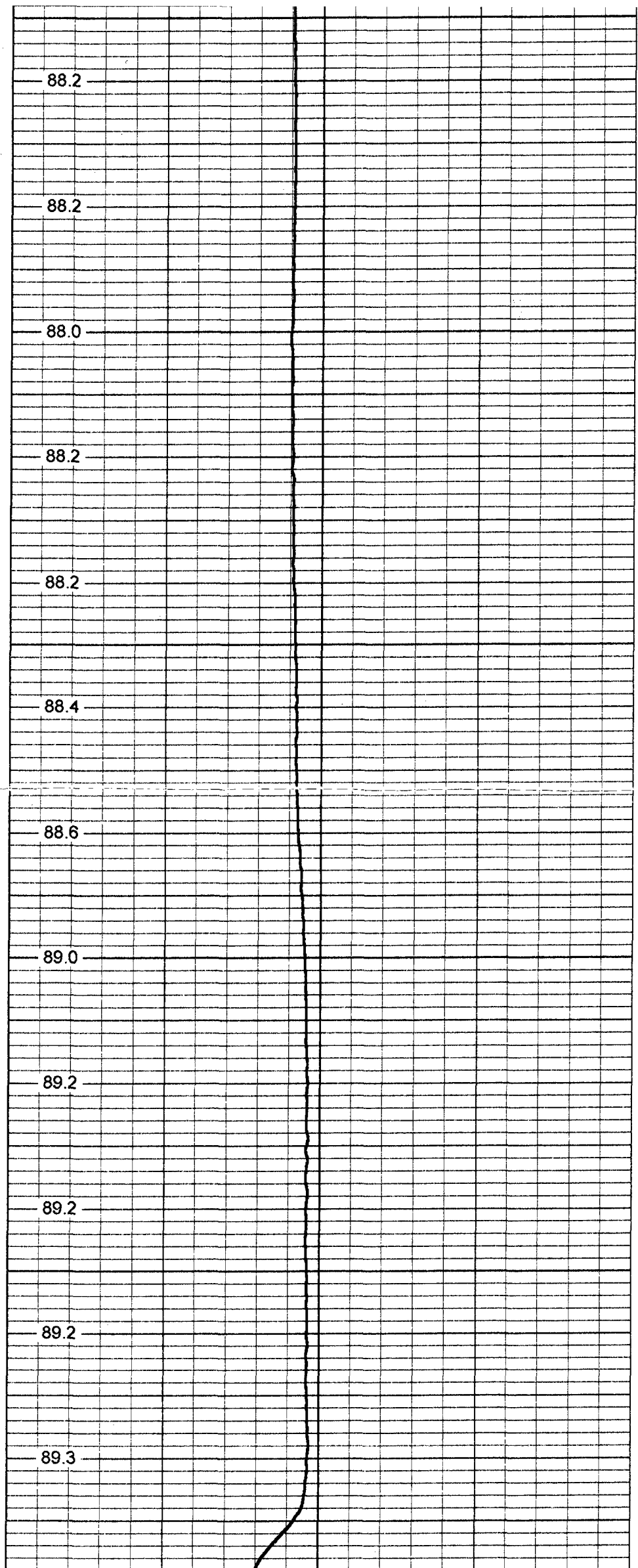
2250

2300

2350

2400

2450



88.2

88.2

88.0

88.2

88.2

88.4

88.6

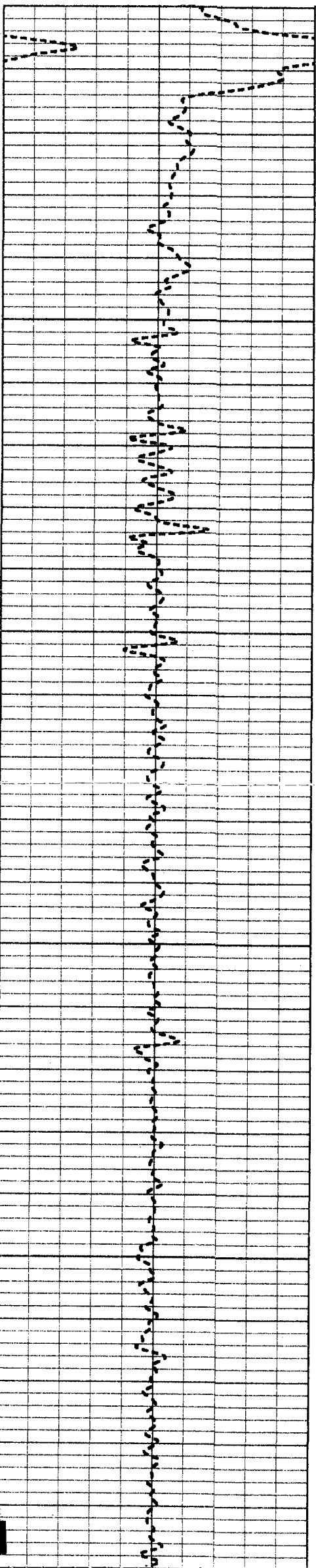
89.0

89.2

89.2

89.2

89.3



2500

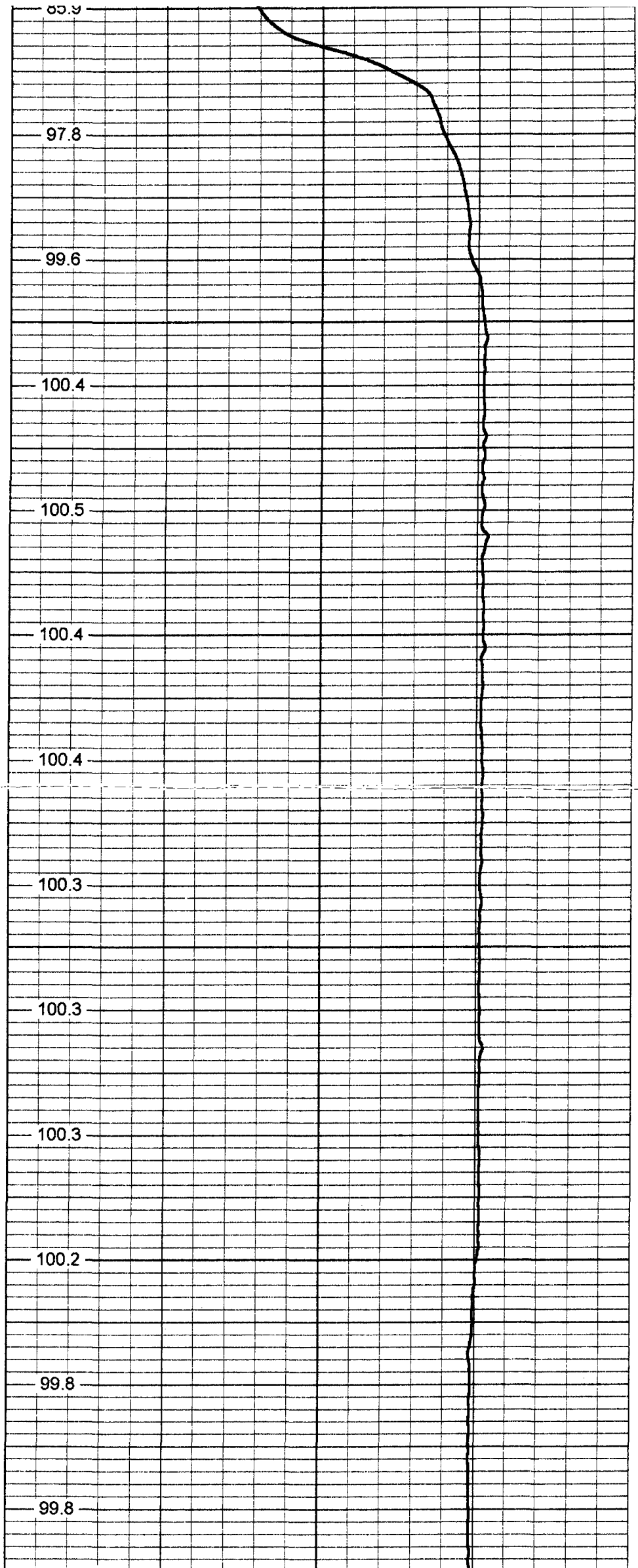
2550

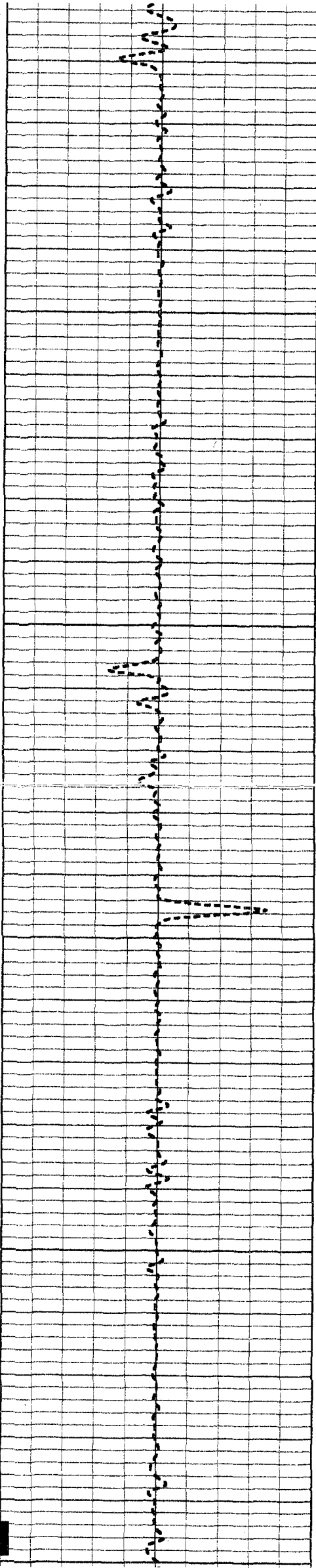
2600

2650

2700

2750





2800

2850

2900

2950

3000

99.3

99.1

99.0

98.9

98.6

98.1

97.8

99.0

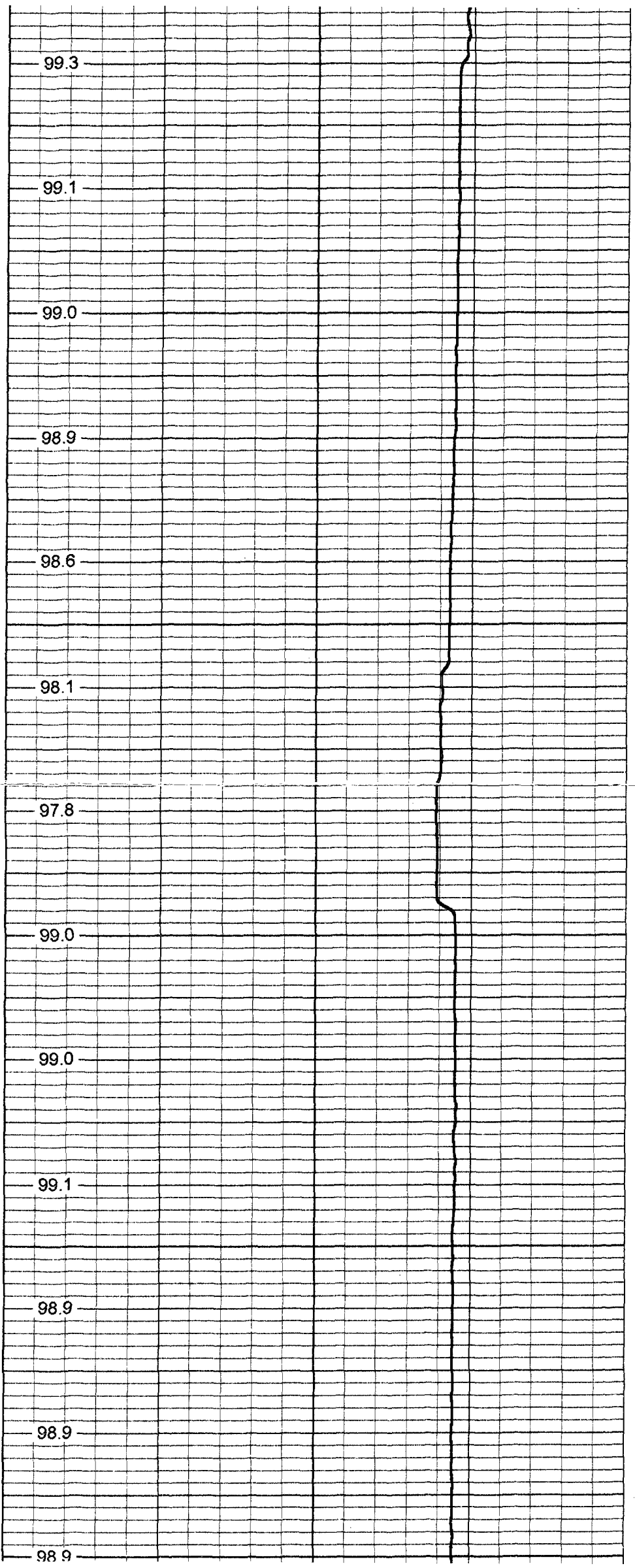
99.0

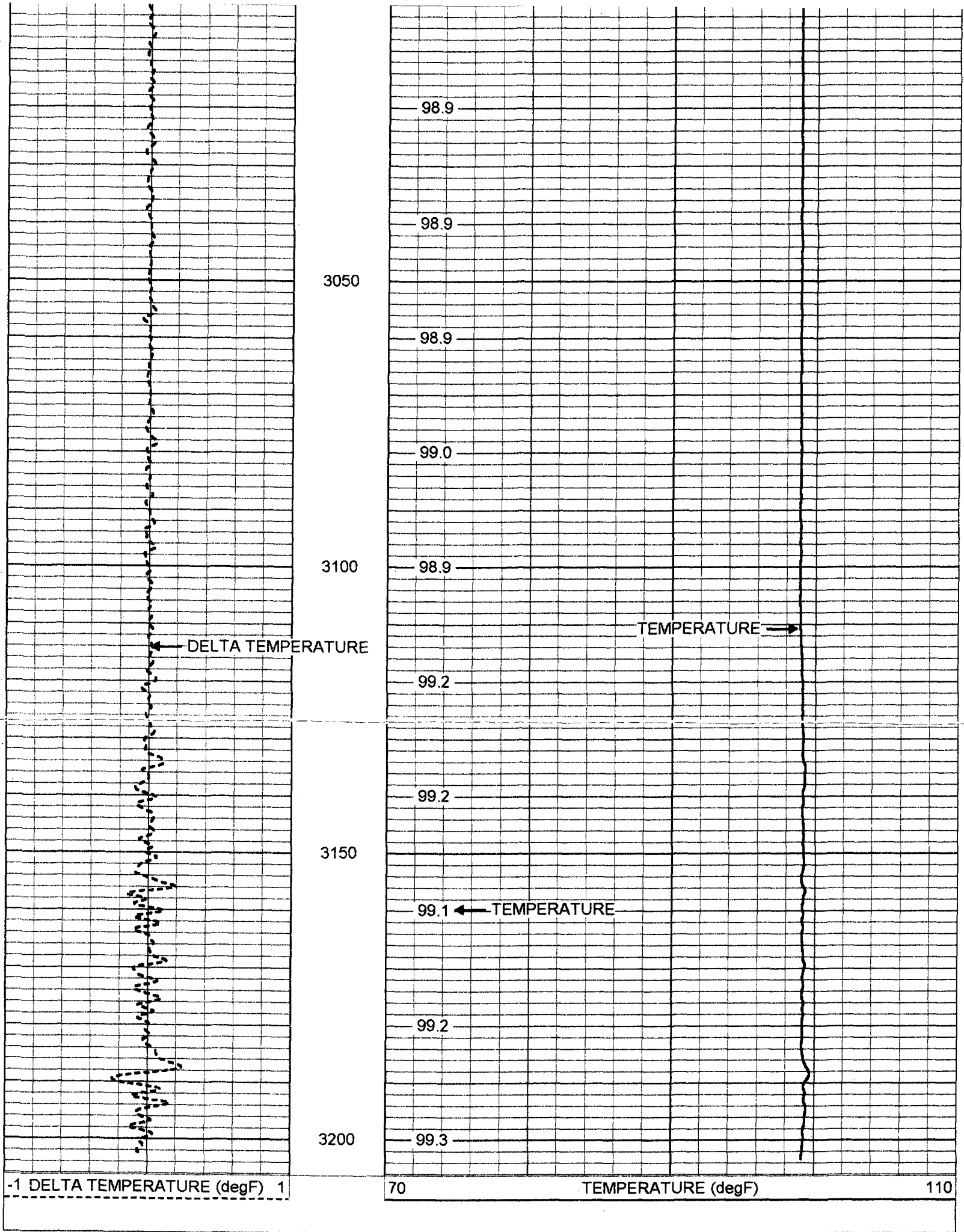
99.1

98.9

98.9

98.9





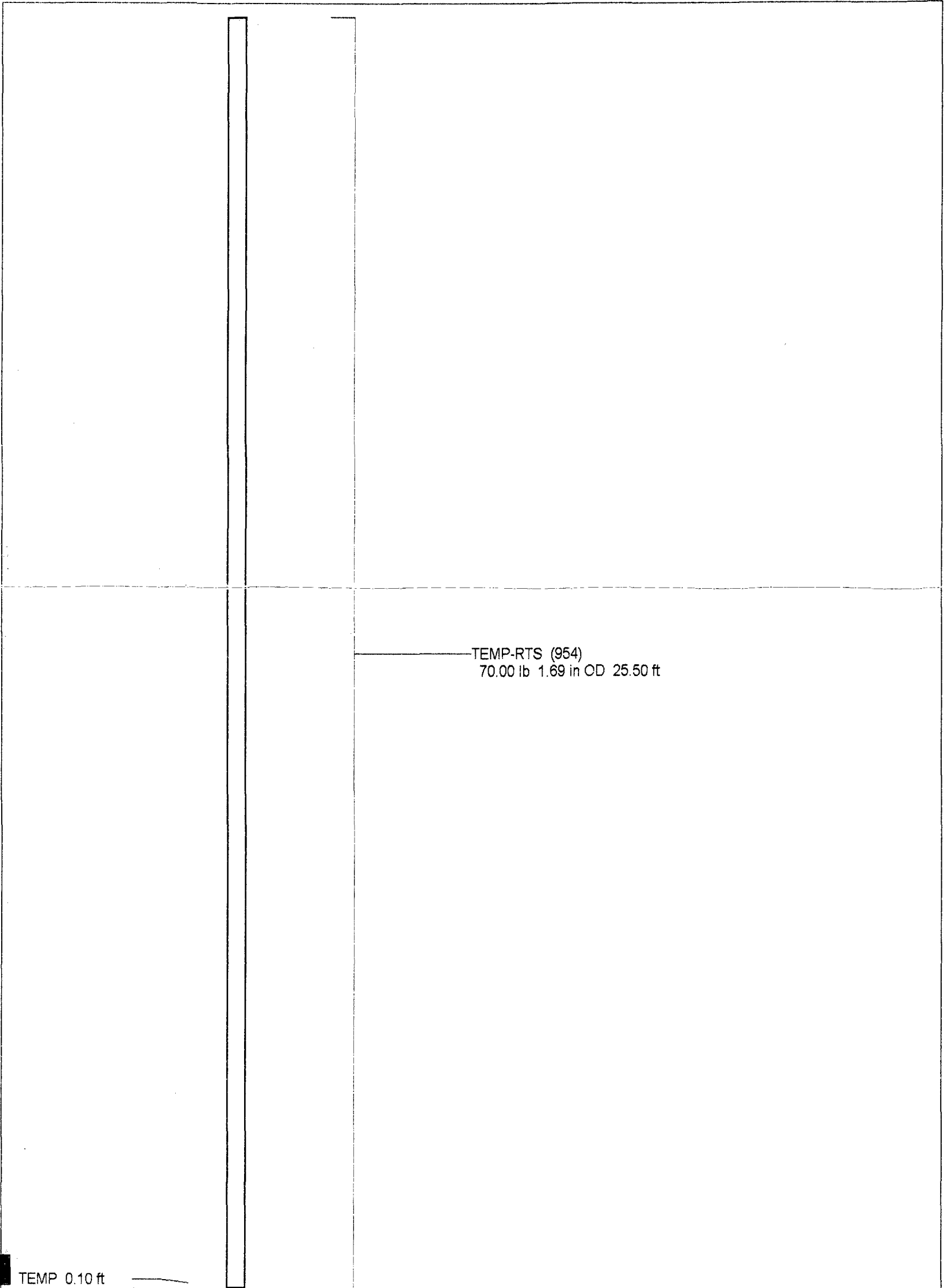
Temperature Calibration Report

Serial Number: 954
 Tool Model: RTS
 Performed: Wed Feb 28 14:27:36 2001

Point #	Reading	Reference
---------	---------	-----------

1 338.011 cps
2 789.31 cps
3 1553.28 cps

34 degF
78 degF
152 degF



Dataset:	run1/pass1
Total Length:	25.50 ft
Total Weight:	70.00 lb
O.D.	1.69 in