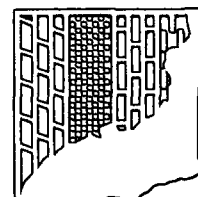


RECEIVED

MAR 25 1996

D.E.P. South District



FLORIDA GEOPHYSICAL LOGGING, INC.

FLUID
RESISTIVITY
TEMPERATURE
LOG

FILE NO. _____

COMPANY MISSIMER INTERNATIONAL

WELL NCRMTP IW #2

FIELD NORTH COLLIER

COUNTY COLLIER STATE FLORIDA

LOCATION _____

SEC. _____ TWP _____ RGE _____

OTHER SERVICES:
DHTV

PERMANENT DATUM PAD LEVEL (P.L.) ELEV. _____

LOG MEASURED FROM P.L. FT. ABOVE PERMANENT DATUM

DRILLING MEASURED FROM P.L. ELEV.: K.B. _____

D.F. _____

G.L. _____

DATE	16-MARCH-1996
RUN NO.	TWELVE
TYPE LOG	FRT
DEPTH-DRILLER	3200'
DEPTH-LOGGER	3210'
LOGGED INTERVAL	3210' TO SURFACE
OPERATING RIG TIME	2.0 HOURS
TYPE FLUID IN HOLE	WATER
SALINITY, PPM CL	N/A
DENSITY-VISCOSITY	N/A
LEVEL	FULL
MAX. REC. TEMP, DEG F.	90 DEG. F.
EQUIPMENT-LOCATION	101 - FTM
RECORDED BY	LEE/JONES
WITNESSED BY	B. MALIYA

BOREHOLE RECORD			CASING RECORD				
RUN NO.	BIT	FROM	TO	SIZE	MGT.	FROM	TO
ELEVEN	18 1/2"	3210'	2500'	52"	.5" MT.	30'	SURFACE
	28 1/2"	2500	1310'	38"	.5" MT.	435'	SURFACE
				30"	.5" MT.	1310'	SURFACE
				20"	.5" MT.	2498'	SURFACE
TWELVE				18"	.5" MT.	2487'	SURFACE

ALL INTERPRETATIONS ARE OPINIONS BASED ON INFERENCES FROM ELECTRICAL OR OTHER MEASUREMENTS AND WE CANNOT AND DO NOT GUARANTEE THE ACCURACY OR CORRECTNESS OF ANY INTERPRETATION, AND WE SHALL NOT, EXCEPT IN THE CASE OF GROSS OR WILLFULL NEGLIGENCE ON OUR PART, BE LIABLE OR RESPONSIBLE FOR ANY LOSS, COSTS, DAMAGES, OR EXPENSES INCURRED OR SUSTAINED BY ANYONE RESULTING FROM ANY INTERPRETATION MADE BY ANY OF OUR OFFICERS, AGENTS OR EMPLOYEES. THESE INTERPRETATIONS ARE ALSO SUBJECT TO OUR GENERAL TERMS AND CONDITIONS SET OUT IN OUR CURRENT PRICE SCHEDULE.

REMARKS

FLUID RESISTIVITY/TEMPERATURE TOOL STRING CONFIGURATION

-- CENTRALIZER -- 2 FT. LONG

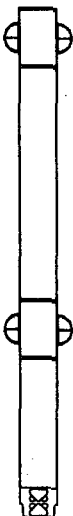
-- TOTAL TOOL STRING LENGTH = 12.5 FT.--

-- 1 11/16" WEIGHT -- 5 FT. LONG

-- CENTRALIZER -- 2 FT. LONG

-- FLUID RESISTIVITY/TEMPERATURE
3.5 FT. LONG

---MEASURE POINT (BOT)



REMARKS

LOGGED DOWN

VERSION: 2.26

LOGGED DOWN

NC212FR5MP

FINISH DEPTH: 2955.1 FEET DIRECTION: DOWN DATE: 03/16/96 TIME: 17:29:12 MODE: TRACE PLAYBACK

DELTA TEMPERATURE

-1.0

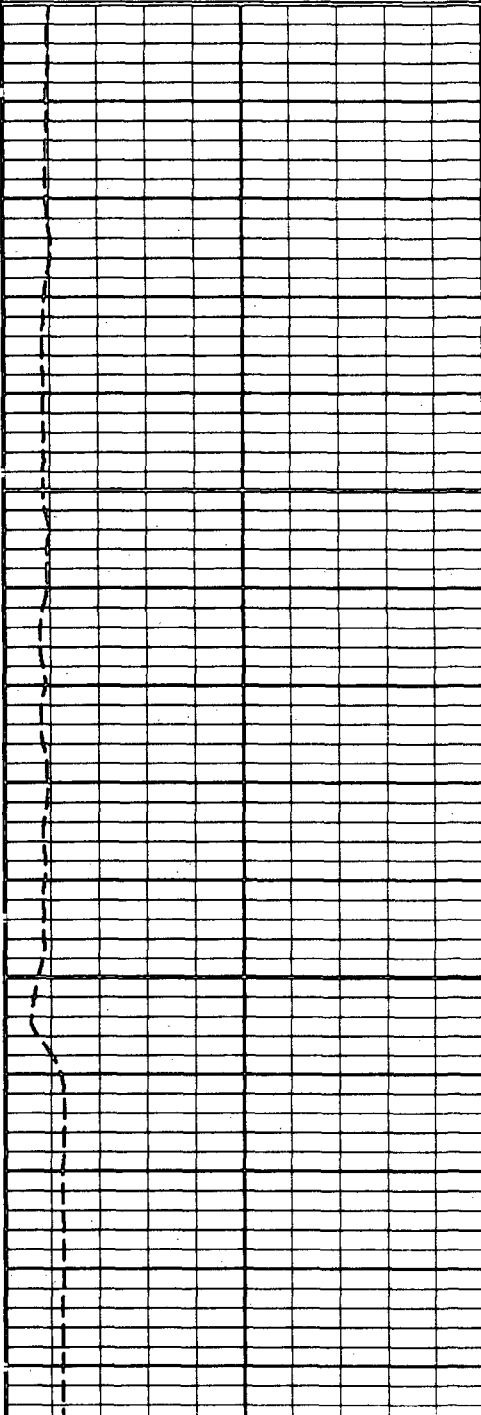
1.0

FL-RES

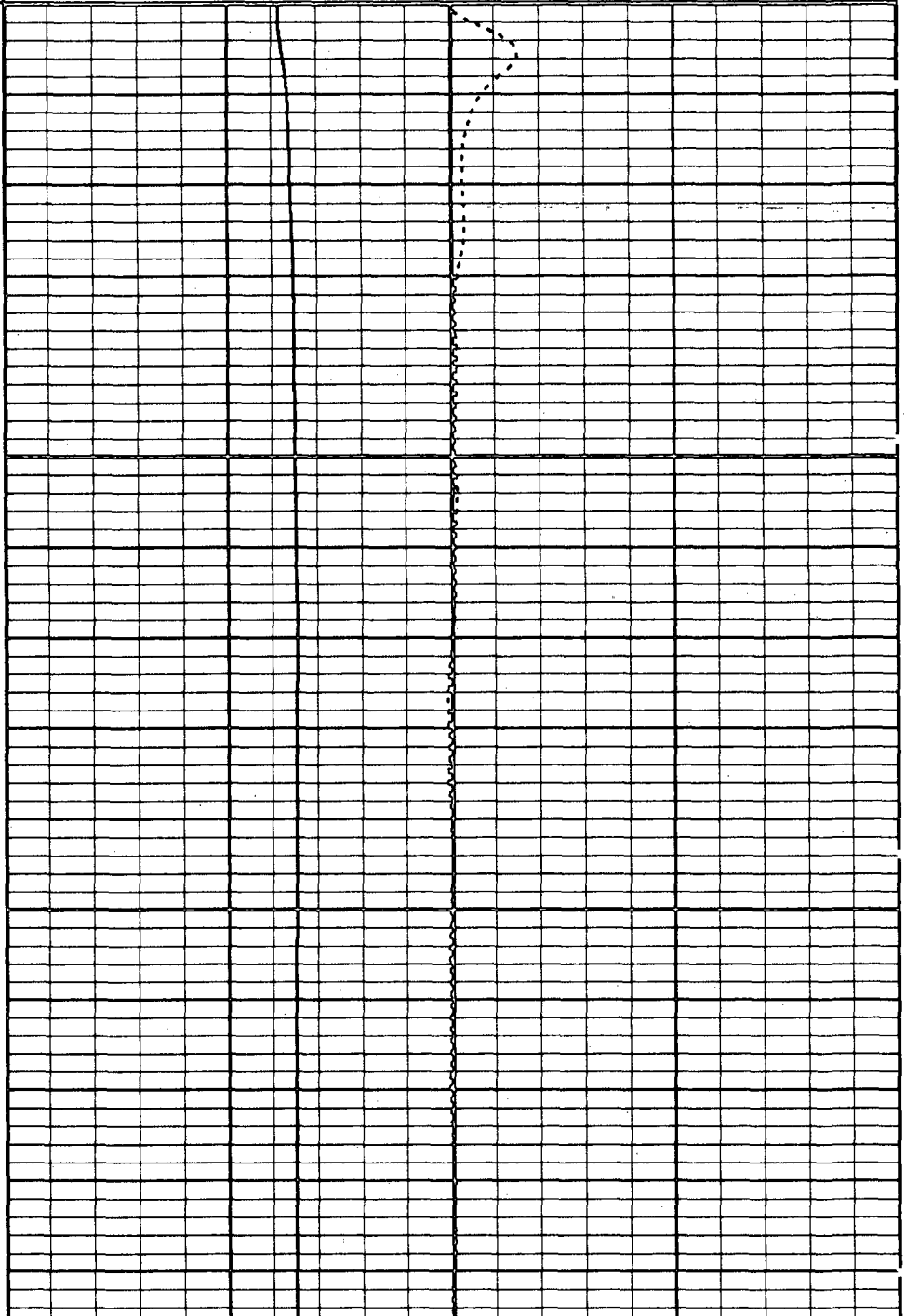
0.00 OHMS 10.00

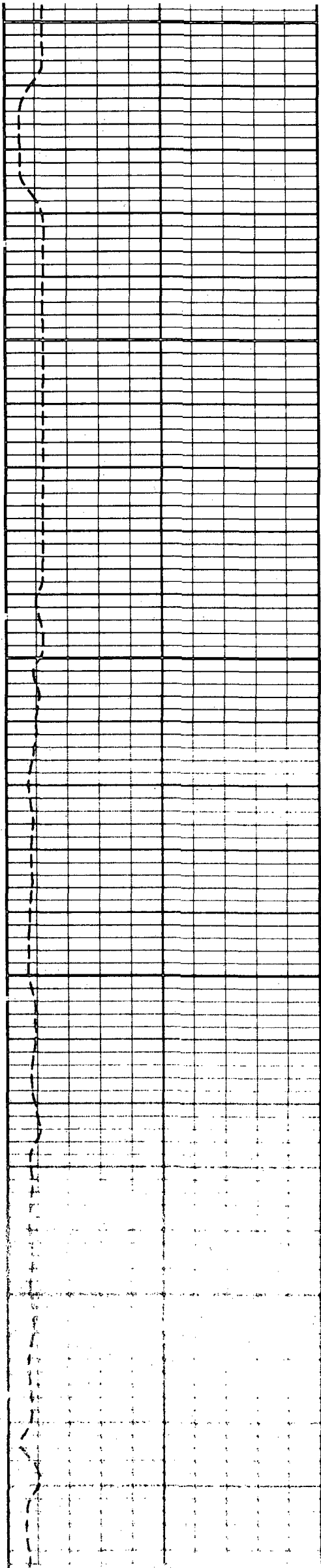
TEMPERATURE

70 DEGREES 90



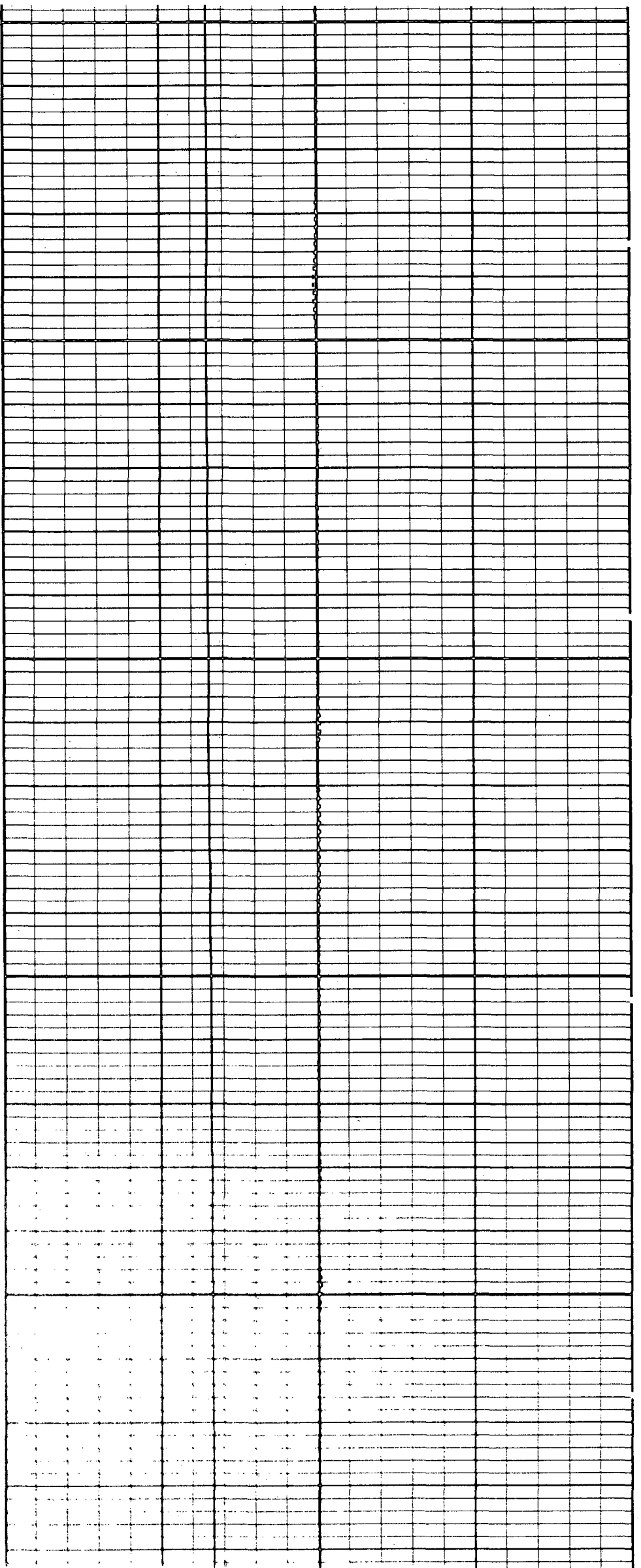
100

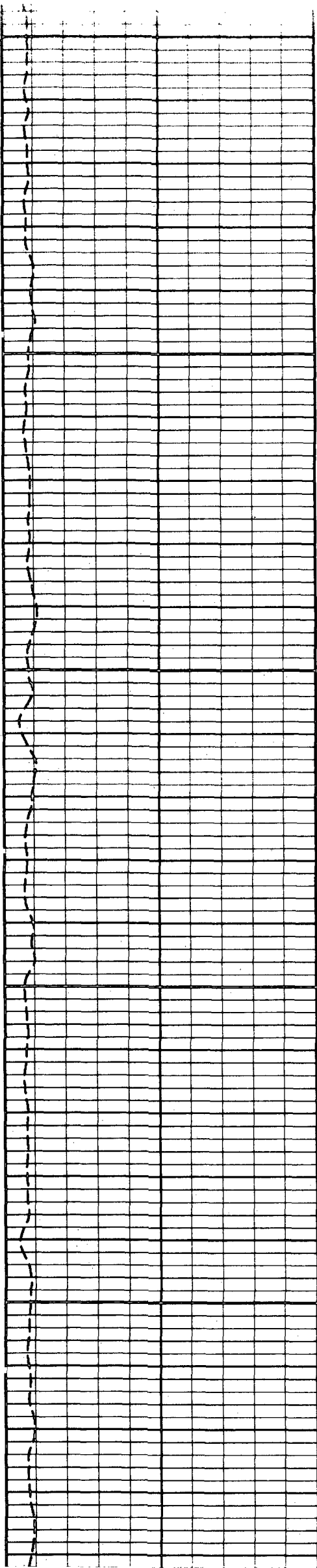




200

300

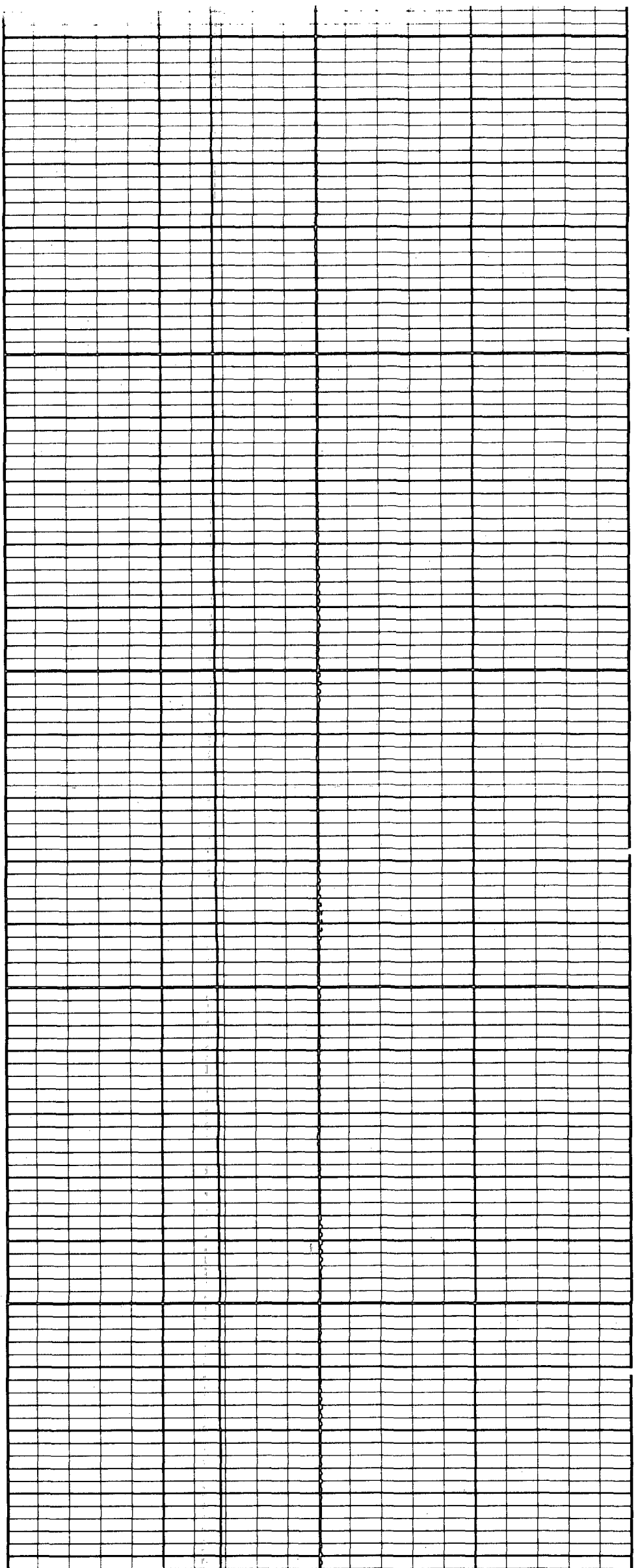


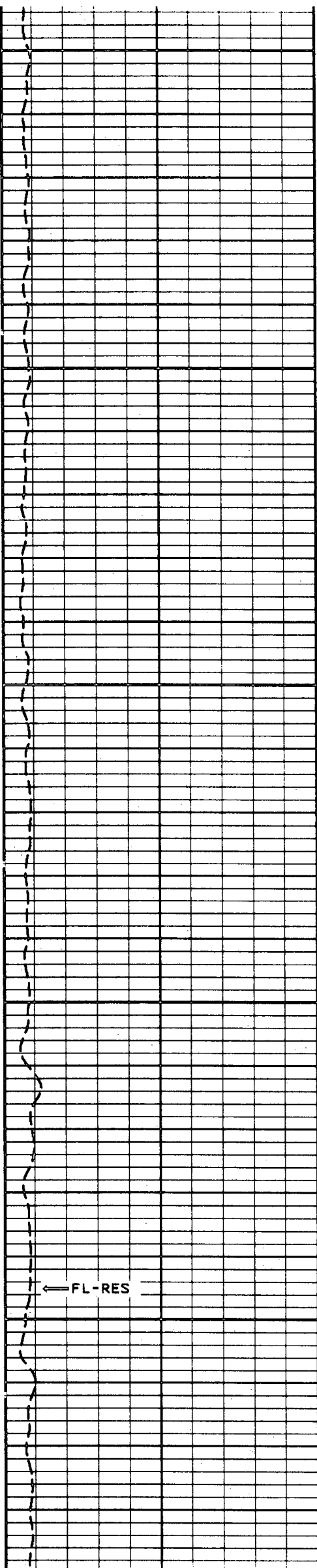


400

500

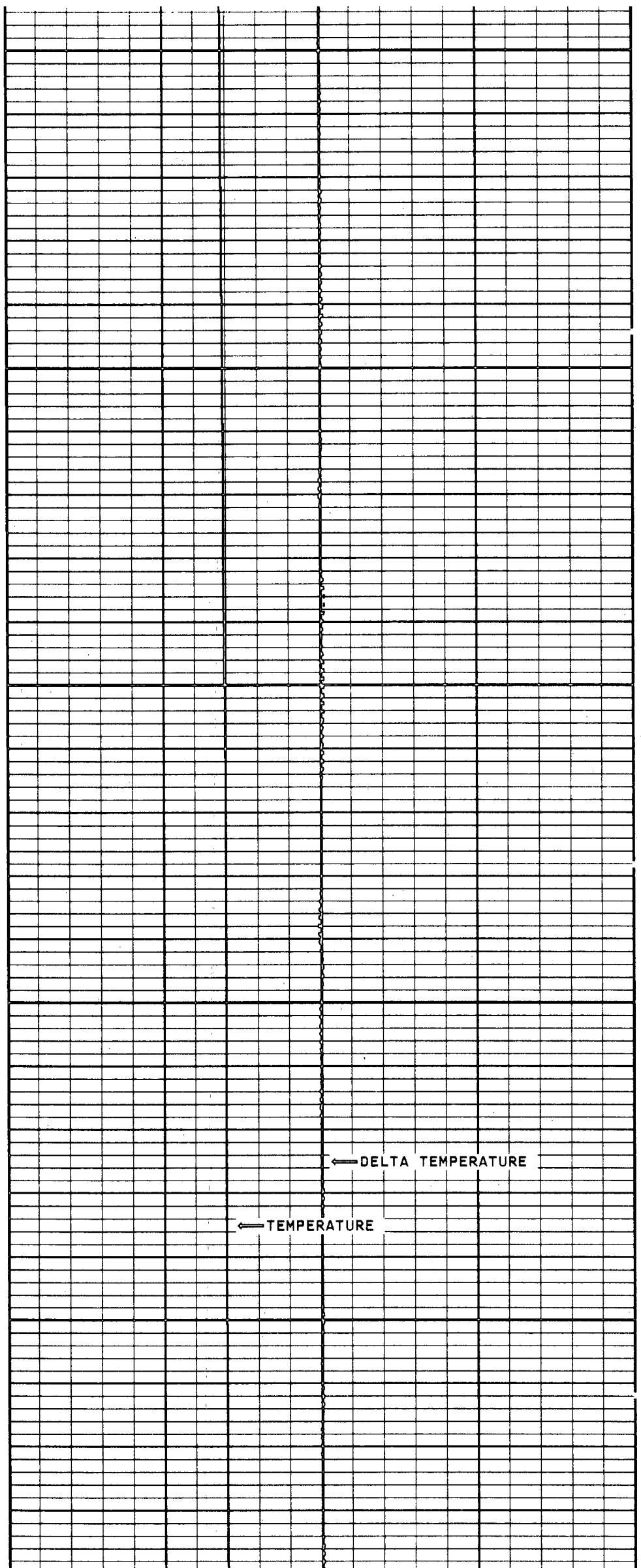
600





700

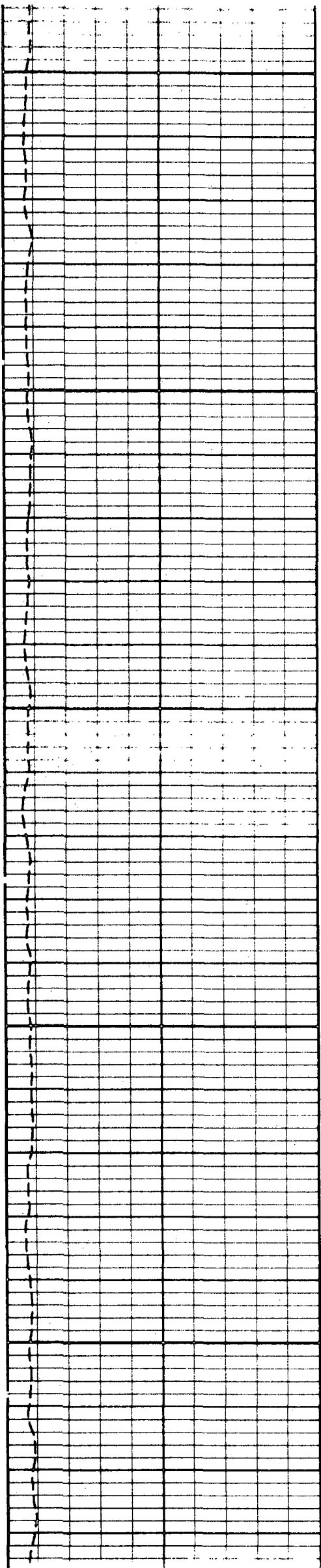
800



← DELTA TEMPERATURE

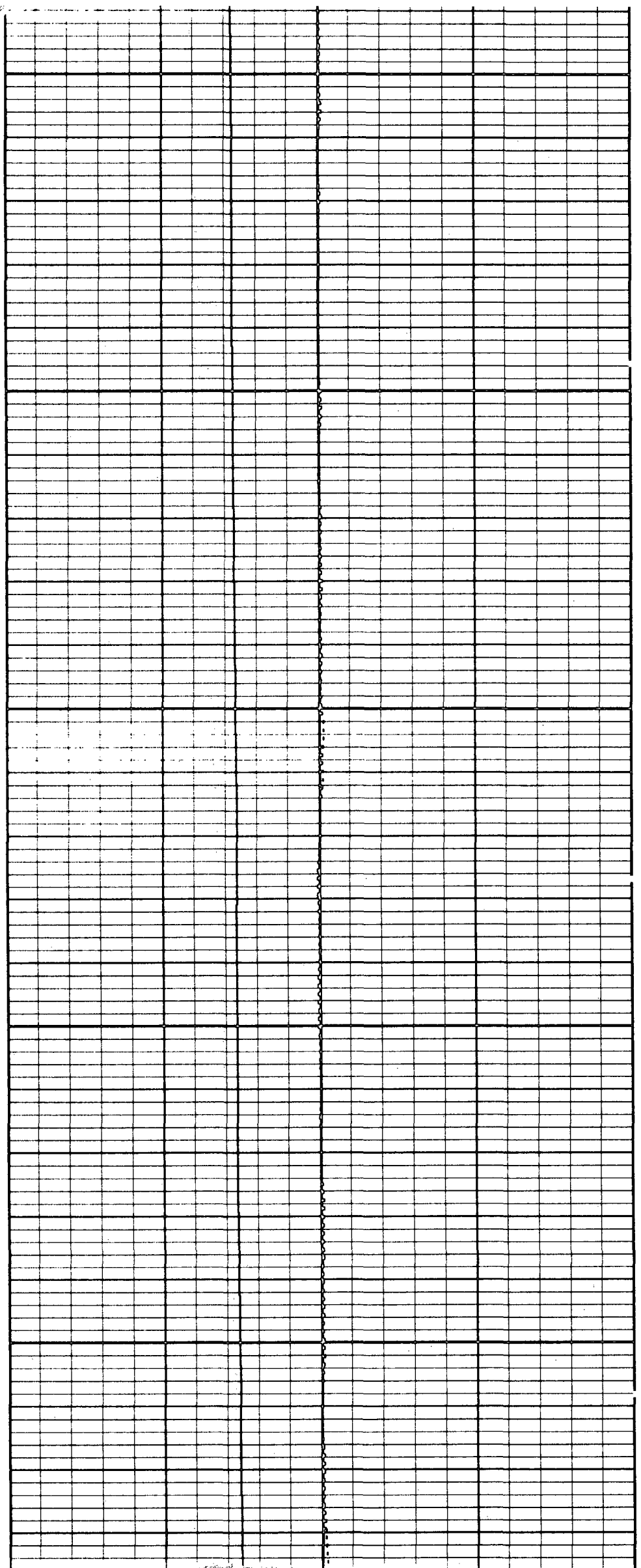
← TEMPERATURE

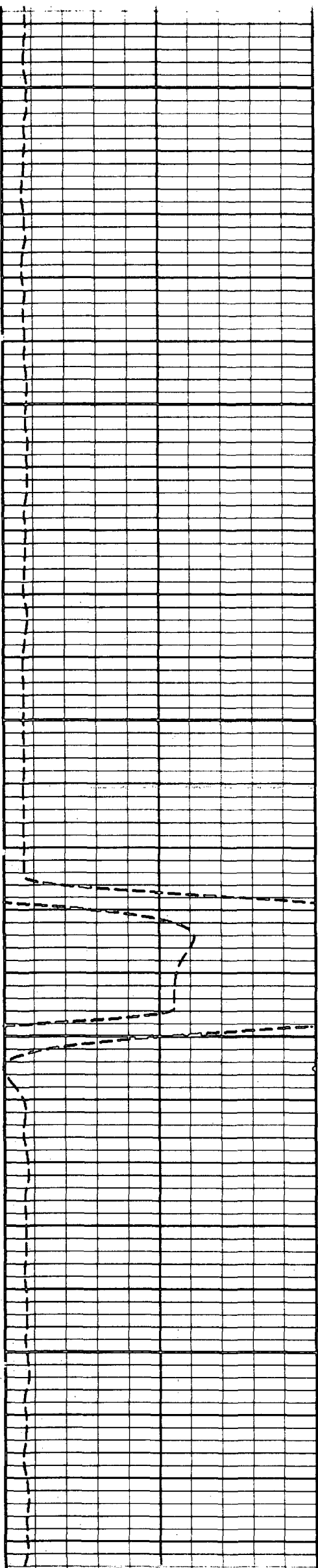
← FL-RES



1200

1300

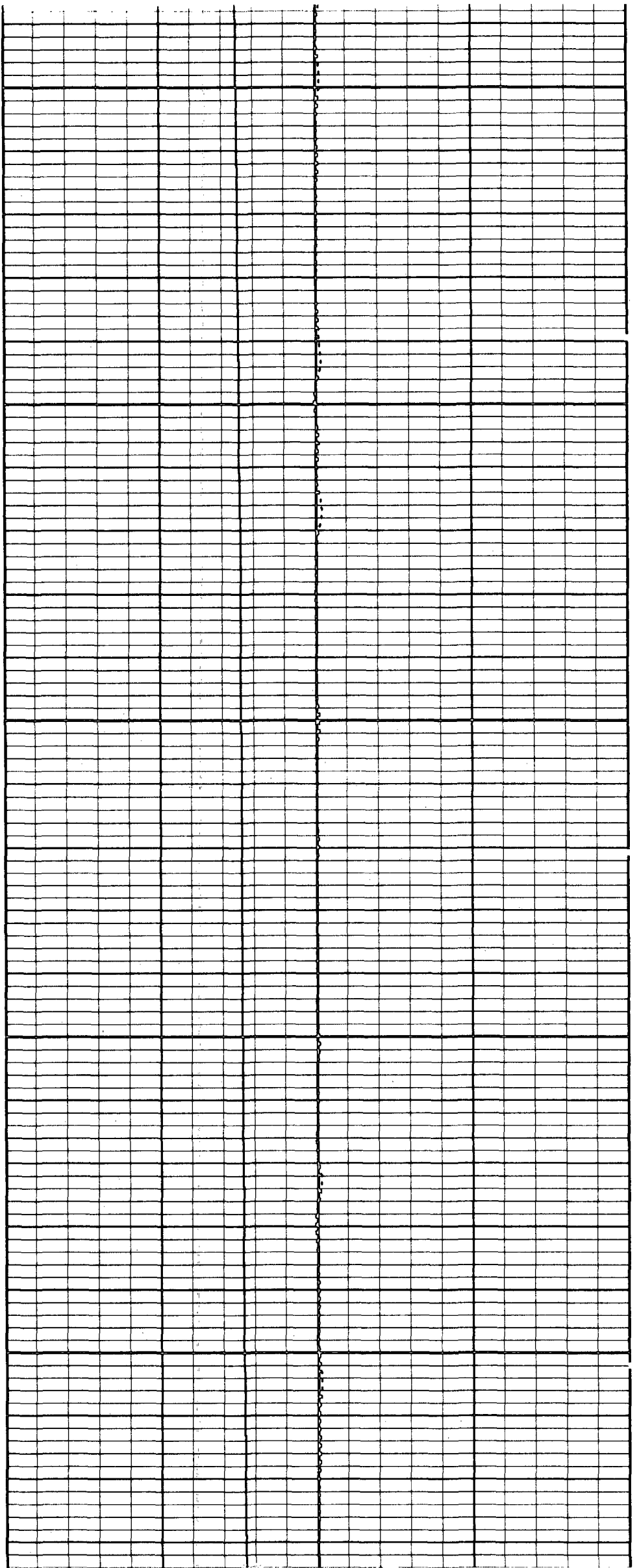


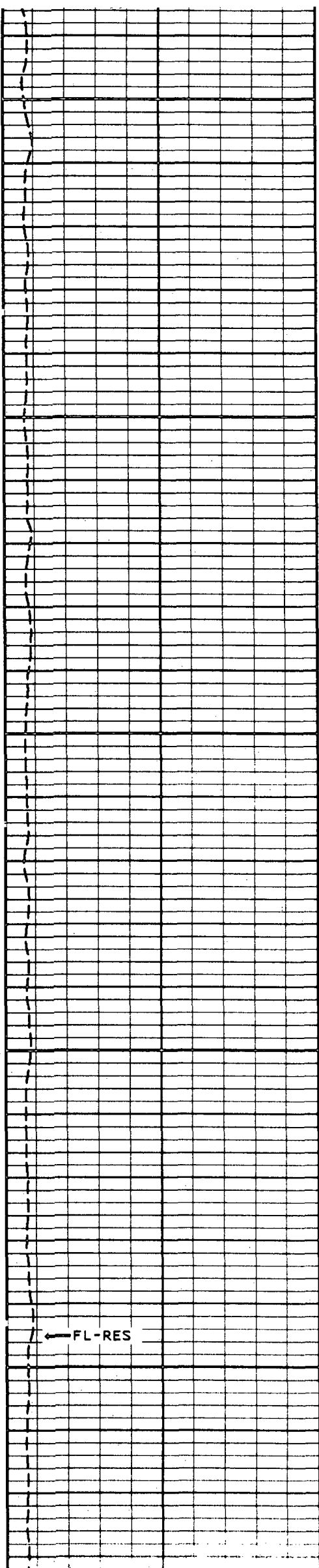


1400

1500

1600



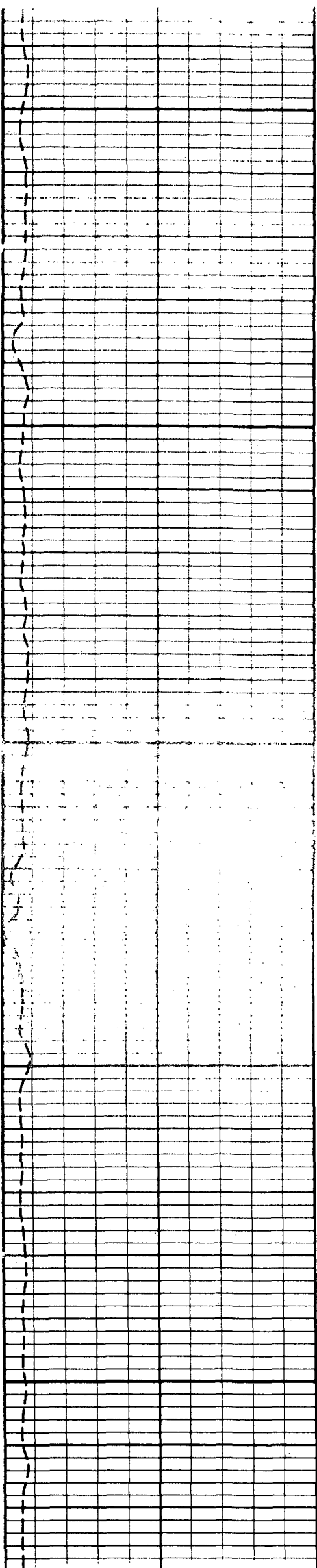


1700

1800

← DELTA TEMPERATURE

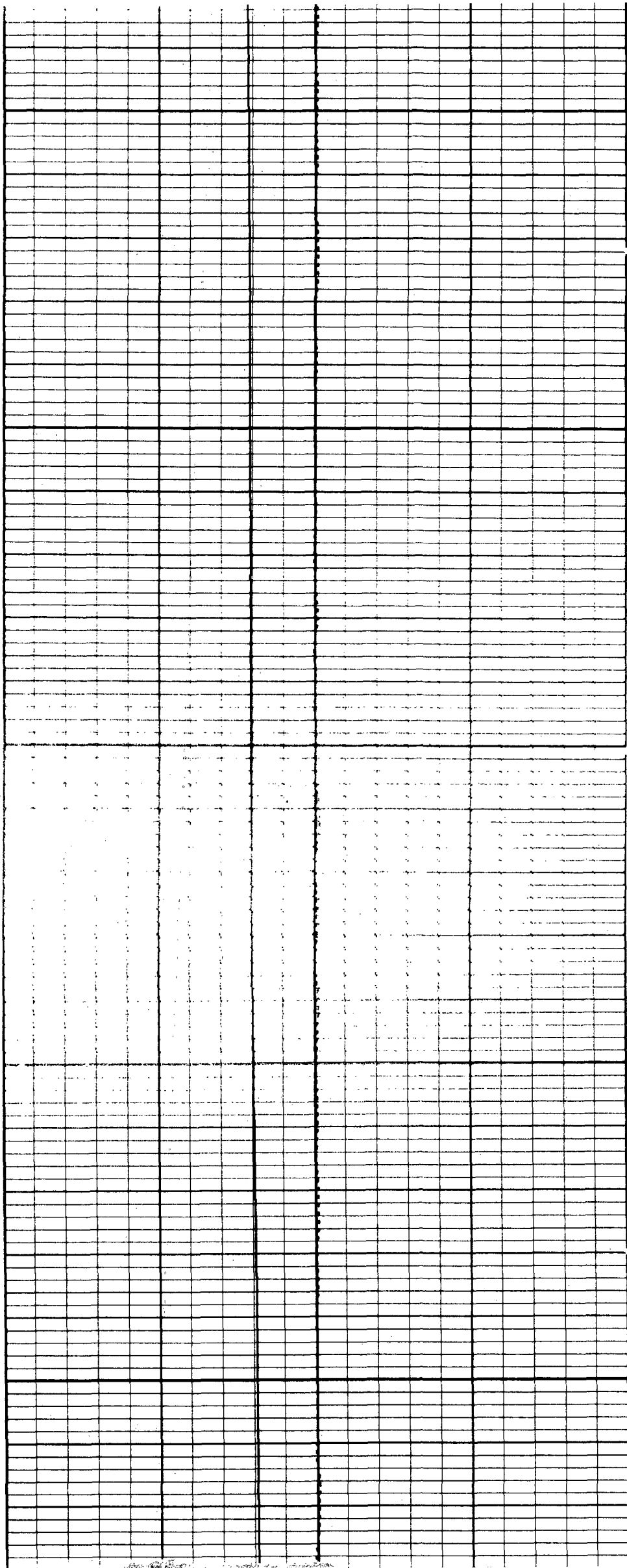
← TEMPERATURE

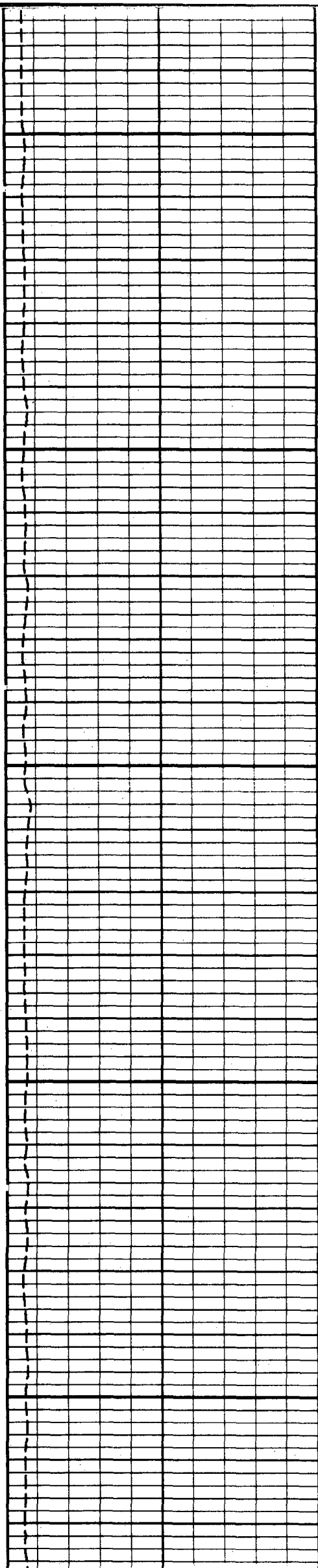


1900

2000

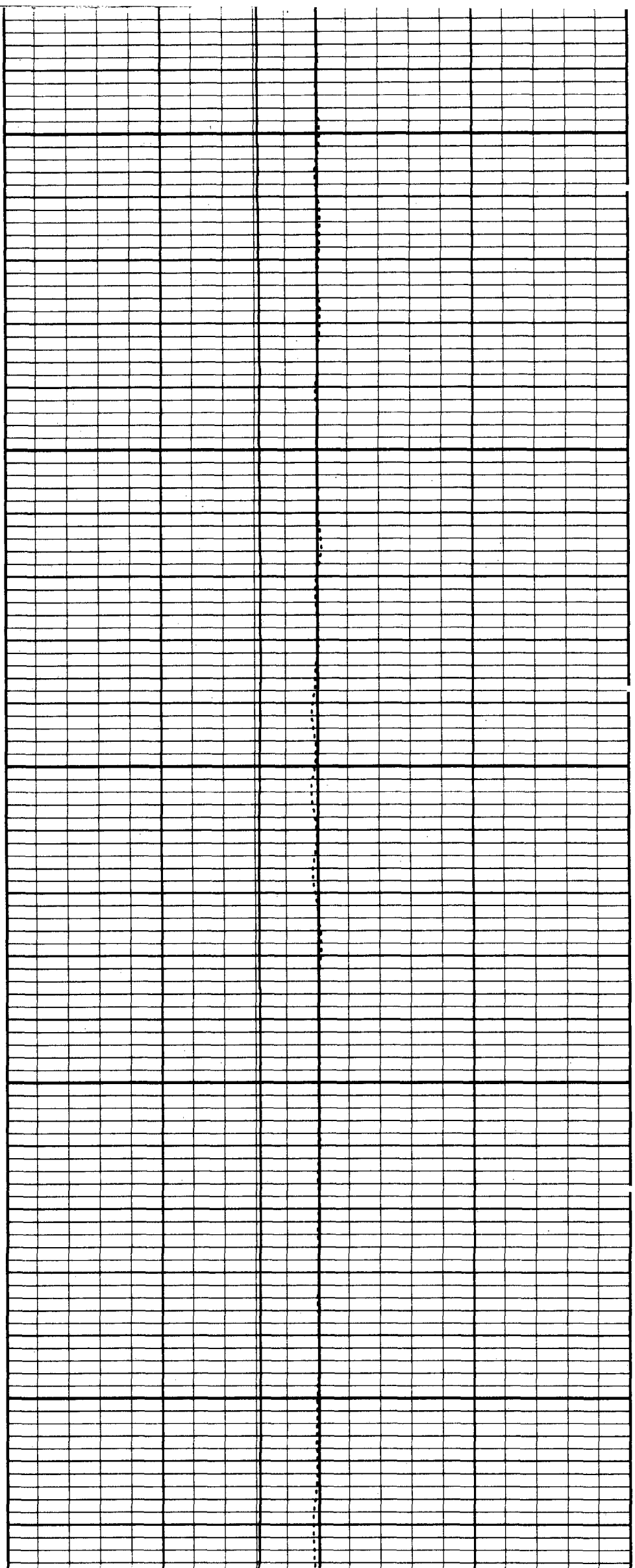
2100

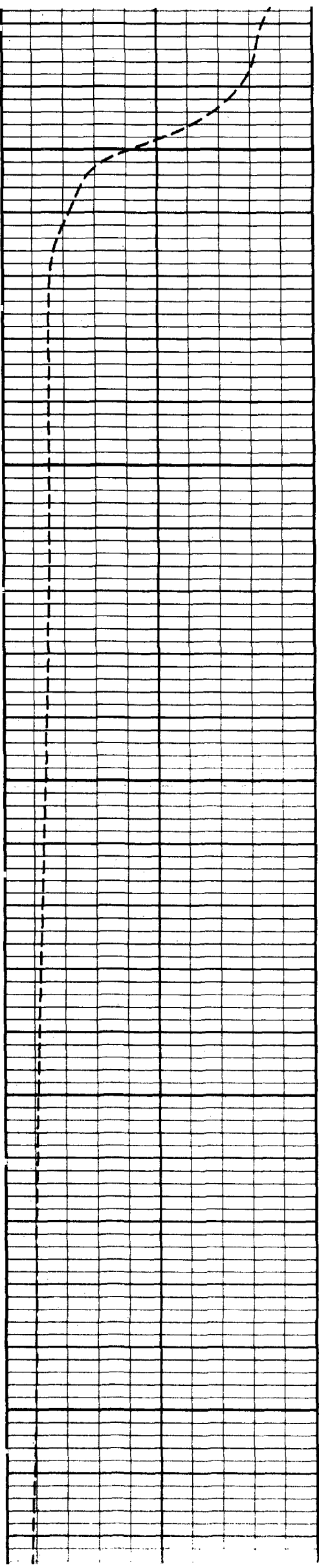




2200

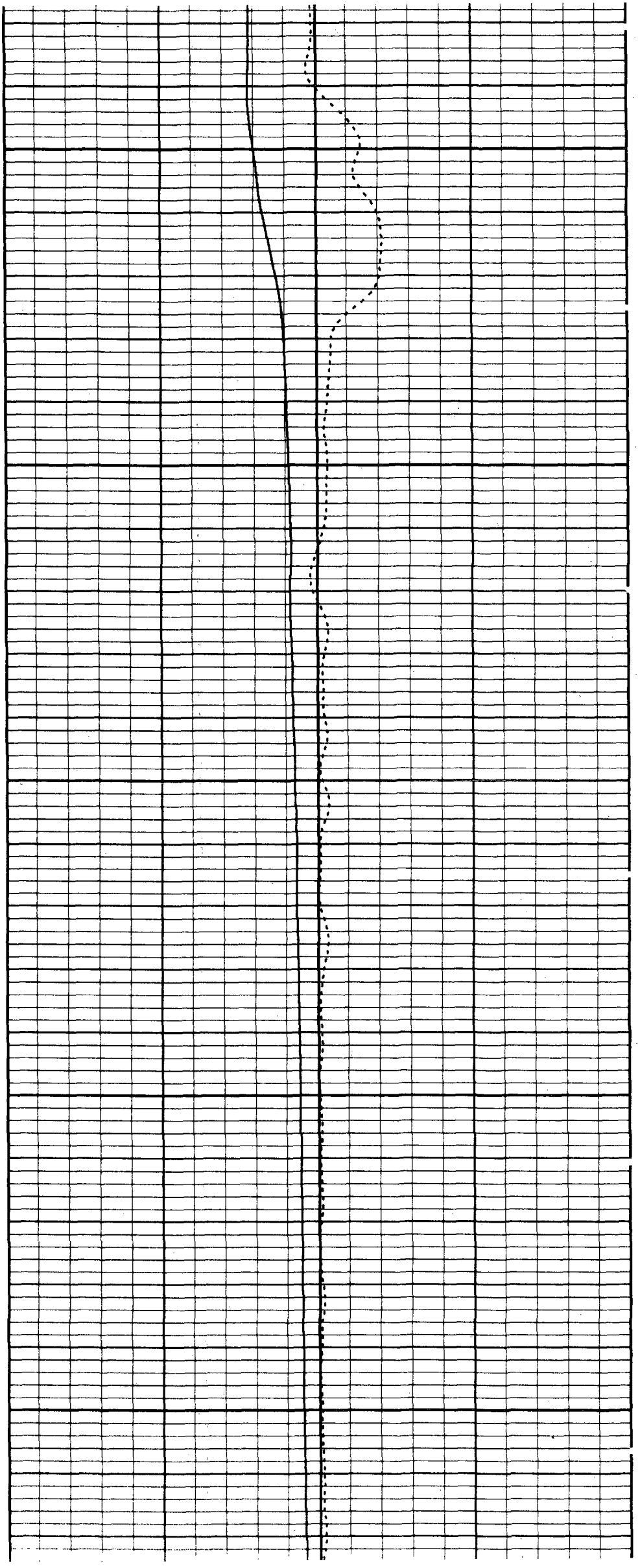
2300





2700

2800



2900

FL-RES
0.00 OHMS 10.00

TEMPERATURE
70 DEGREES 90
DELTA TEMPERATURE
-1.0 1.0

START DEPTH 0.1 FEET DIRECTION DOWN DATE 03 16 96 TIME: 16:44:06 MODE: TRACE PLAYBACK

INL212FR5MP

LOGGED DOWN

VERSION: 2.26

REMARKS

LOG RAN IN TWO SECTIONS BECAUSE OF WIDE CONDITIONS

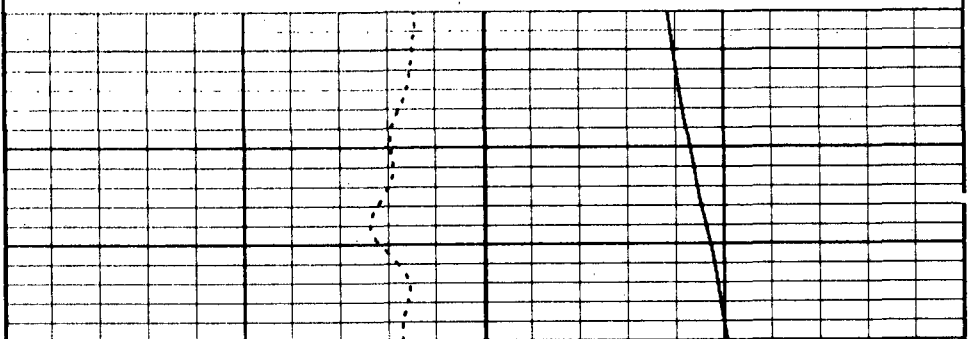
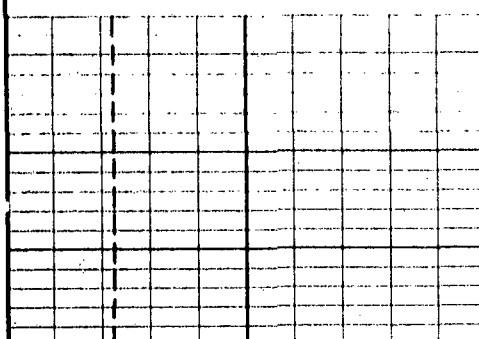
VERSION: 2.26

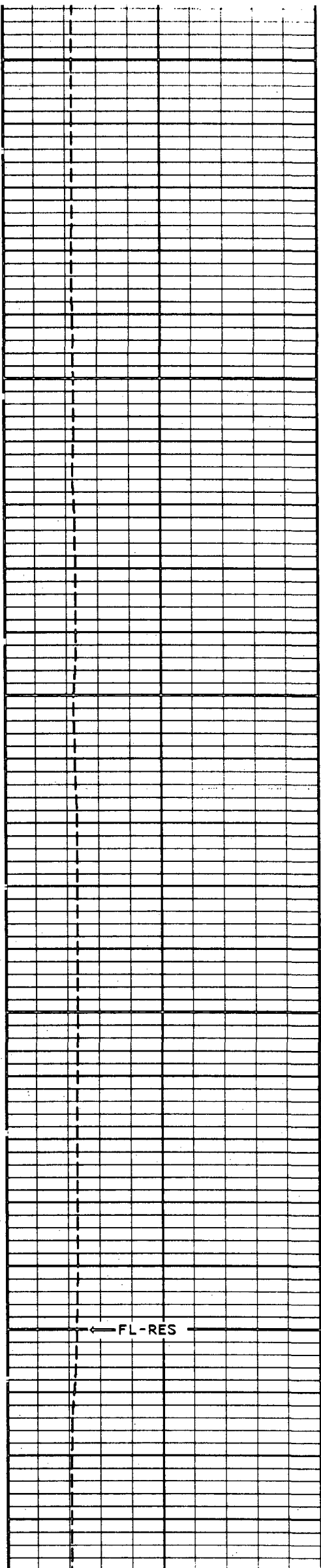
INL212FRT

FINISH DEPTH 2950.4 FEET DIRECTION UP DATE: 03/16/96 TIME: 02:33:14 MODE: TRACE PLAYBACK

FL-RES
0.00 OHMS 10.00

DELTA TEMPERATURE
-1.0 1.0
TEMPERATURE
70 DEGREES 90

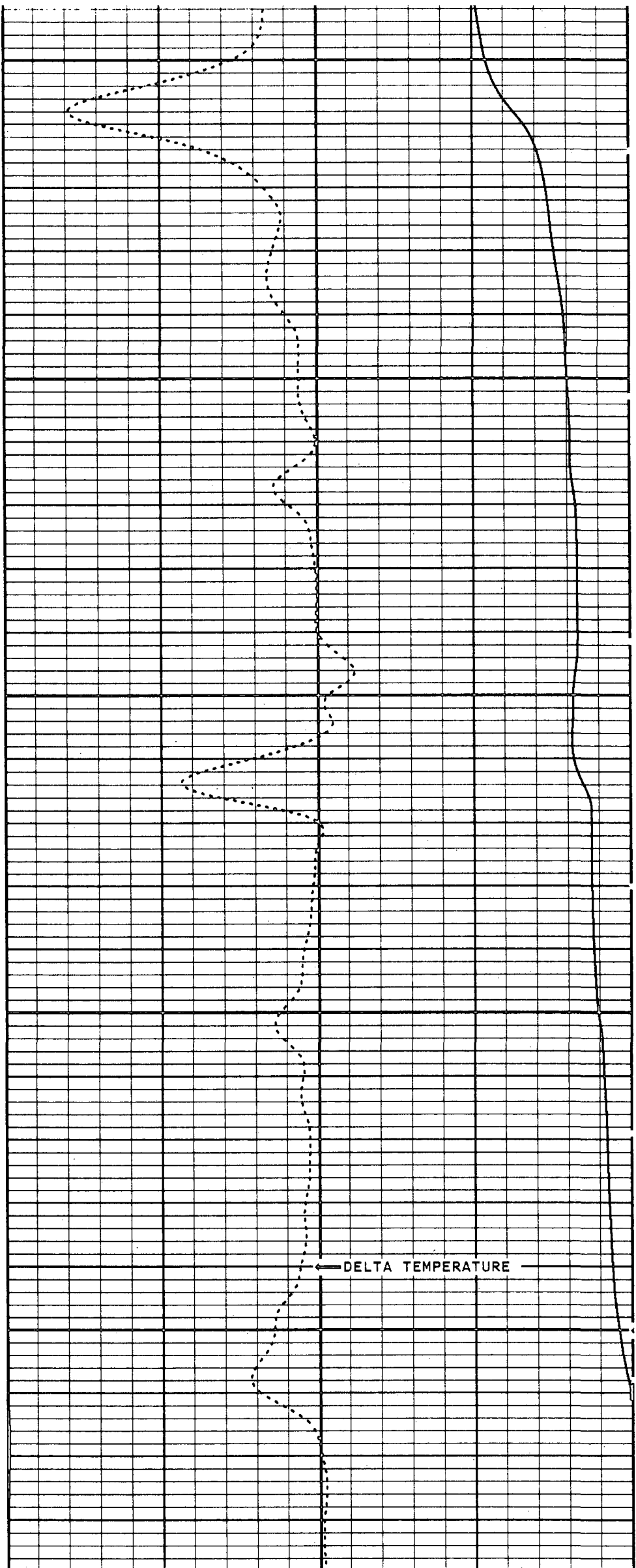


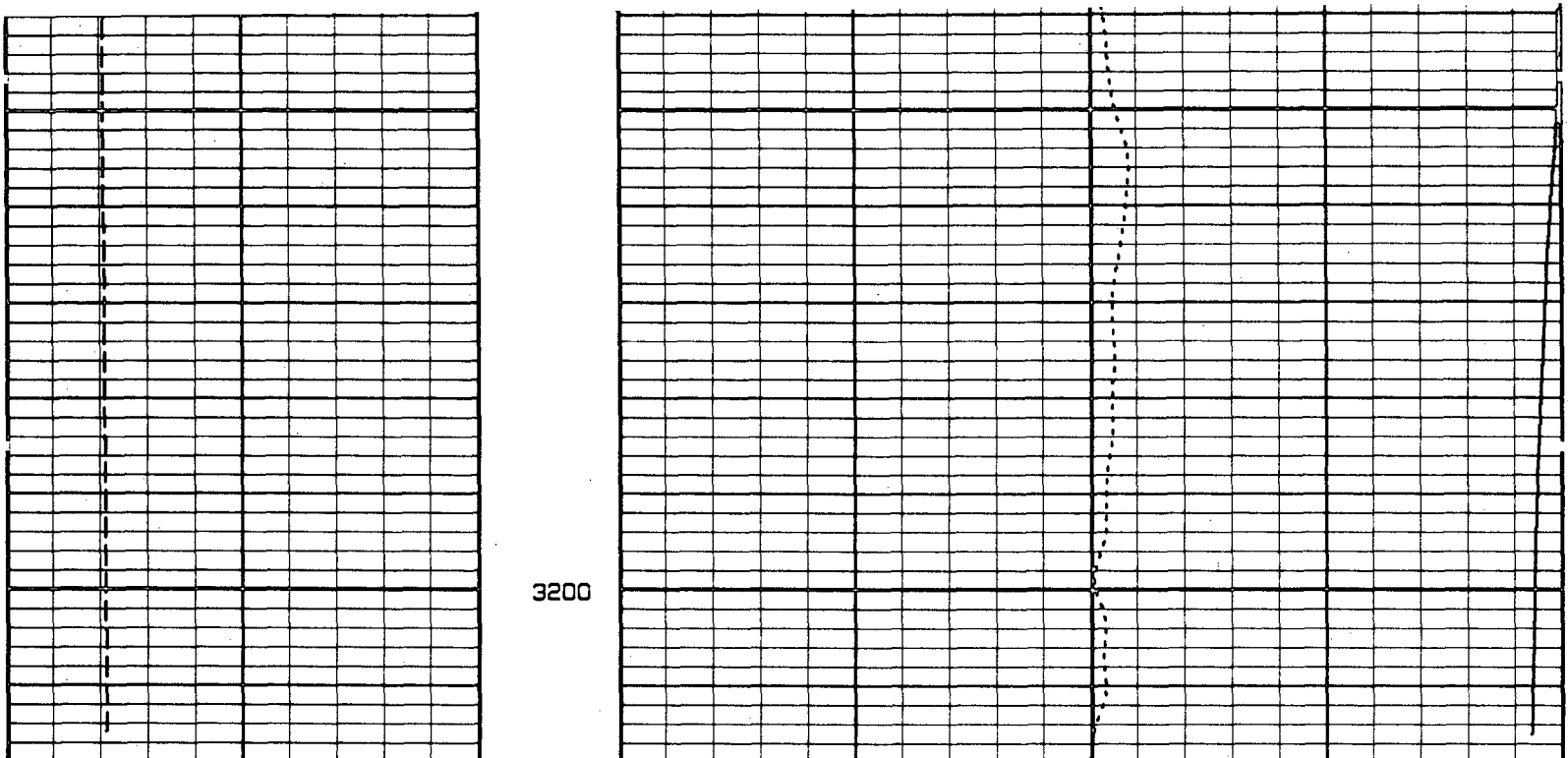


2900

3000

3100





3200

FL-RES
0.00 OHMS 1.00

TEMPERATURE
70 DEGREES 90
DELTA TEMPERATURE
-1.0 1.0

START DEPTH: 3212.1 FEET DIRECTION: UP DATE: 03/16/96 TIME: 02:23:25 MODE: TRACE PLAYBACK

NCIW212FRT

VERSION: 2.26

MASTER CALIBRATION SUMMARY

FILE: DATE: 03/17/96 TIME: 15:56 VERSION: 2.26

TEMPERATURE TOOL #30

DATE: 03/10/95 TIME: 15:29

	MEASURED	UNITS	STANDARD	MINIMUM	MAXIMUM	DEVIATION	UNITS
ZERO	288.3	CPS	69.6	69.3	69.8	0.14	DEGF
PLUS	456.9	CPS	103.6	102.9	104.5	0.29	DEGF

FL-RES TOOL #30

DATE: 05/04/95 TIME: 15:50

	MEASURED	UNITS	STANDARD	MINIMUM	MAXIMUM	DEVIATION	UNITS
SONDEX 50000 MMHOS	9560.0	CPS	0.20	0.20	0.20	0.000	OHMS
SONDEX 25000 MMHOS	5050.0	CPS	0.40	0.40	0.40	0.000	OHMS
SONDEX 10000 MMHOS	2060.0	CPS	1.00	1.00	1.00	0.000	OHMS
SONDEX 2000 MMHOS	410.0	CPS	5.00	5.00	5.00	0.000	OHMS
SONDEX 500 MMHOS	99.0	CPS	20.00	20.00	20.00	0.000	OHMS

COMPANY MISSIMER INTERNATIONAL

WELL

NCRWTP IW #2

FIELD

NORTH COLLIER

STATE FLORIDA

