



**FLUID RESISTIVITY  
TEMPERATURE  
LOG**

Company **Diversified Drilling Corporation**  
 Well **IAMMW**  
 Field **Punta Gorda**  
 County **Charlotte** State/Prv **Florida**

City of Punta Gorda  
 Water Treatment Plant

Other Services  
 XY/GR, DIL  
 FLOW, BHC  
 VIDEO

Permanent Datum	G.L.	Elevation	K.B.
Log Measured From	G.L.		D.F.
Drilling Measured From	G.L.		G.L.

Date	20-MAR-2002		
Run Number	THREE		
Depth Driller	440'		
Depth Logger	384'		
Bottom Logged Interval	384'		
Top Log Interval	300'		
Open Hole Size	7"		
Type Fluid	WATER		
Density / Viscosity	NANA		
Max. Recorded Temp.	na		
Estimated Cement Top	NA		
Time Well Ready	08:30 3/20/02		
Time Logger on Bottom	12:30 3/20/02		
Equipment Number	MVGS-1		
Location	Ft. Myers		
Recorded By	S. Miller		
Witnessed By	Travis (DDC)		

Run Number	Borehole Record		Tubing Record	
	Bit	From	To	Size
ONE	7.875"	40'	350'	40'
TWO	15"	40'	350'	40'
THREE	7"	350'	440'	40'

Casing Record	Size	Wdg/Ft	Top	Bottom
Surface String	16"	0.375" WT	SURFACE	40'
Prot. String	8" Cert PVC	7.625" ID	SURFACE	345'
Production String				
Liner				

Invoice No: 2002056      P.O. #: 14531      Job No.: 6022      \*FINAL PRINT\*

<<< Fold Here >>>

All interpretations are opinions based on inferences from electrical or other measurements and we cannot and do not guarantee the accuracy or correctness of any interpretation, and we shall not, except in the case of gross or willful negligence on our part, be liable or responsible for any loss, costs, damages, or expenses incurred or sustained by anyone resulting from any interpretation made by any of our officers, agents or employees. These interpretations are also subject to our general terms and conditions set out in our current Price Schedule.

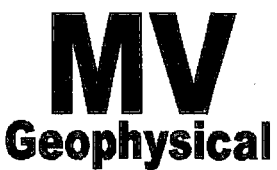
**Comments**

A DYNAMIC DOWN and UP pass were performed.  
 Rw=3.846 ohm-m @ 80.6 degF (DYNAMIC). Q=10 gpm.  
**FLUID RESISTIVITY CALIBRATION REPORT**  
 (Performed: 12-JAN-01 17:30)

OHM-M	CPS
2.575	2950.14
3.404	3185.45
4.829	2565.98

**TEMPERATURE CALIBRATION REPORT**  
 (Performed: 12-JAN-01 17:45)

DEG-F	CPS
39.0	2515.12
105.6	5795.18

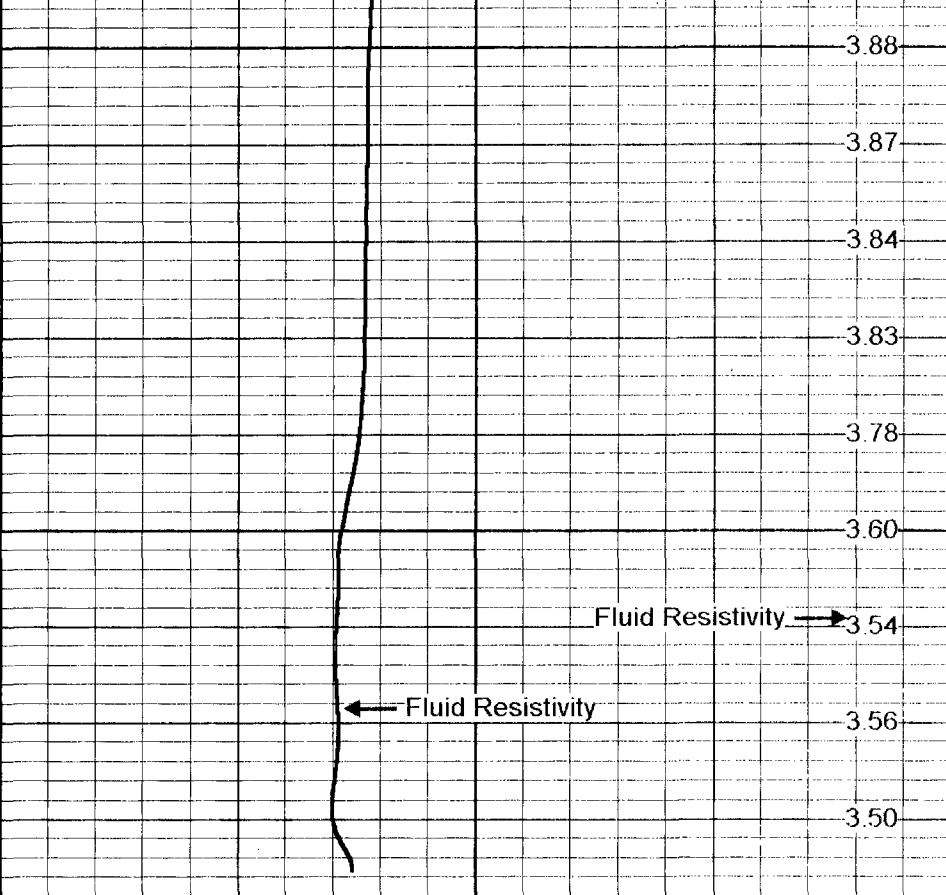
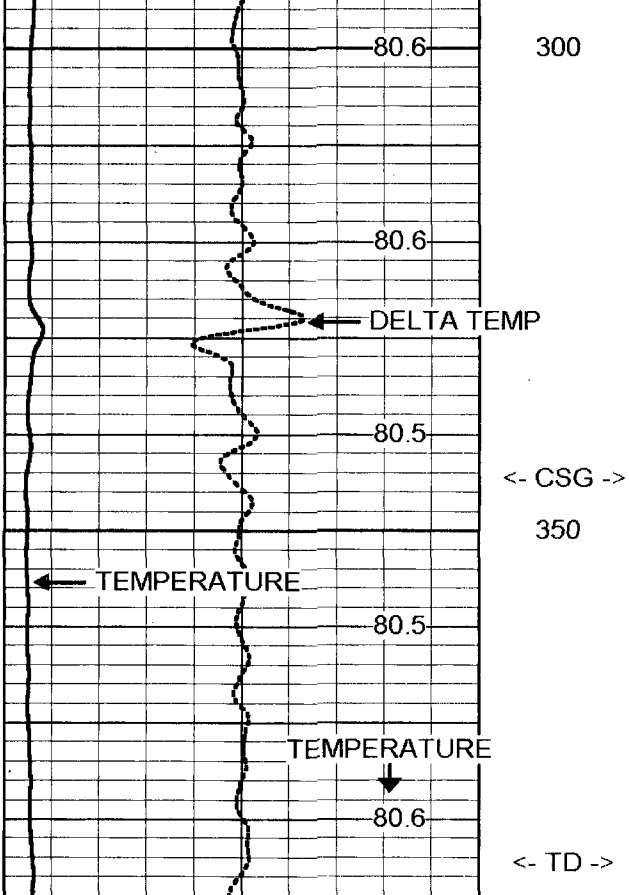


**FRT DOWN**

Database File: pgiamw.db  
 Dataset Pathname: run3/FRTD  
 Presentation Format: frttemp.prs  
 Dataset Creation: Fri Mar 22 14:12:19 2002  
 Charted by: Depth in Feet scaled 1.240

80 TEMPERATURE (degF) 90  
 -0.5 DELTA TEMP (degF) 0.5

0 Fluid Resistivity 10



80 TEMPERATURE (degF) 90  
 -0.5 DELTA TEMP (degF) 0.5

0 Fluid Resistivity 10

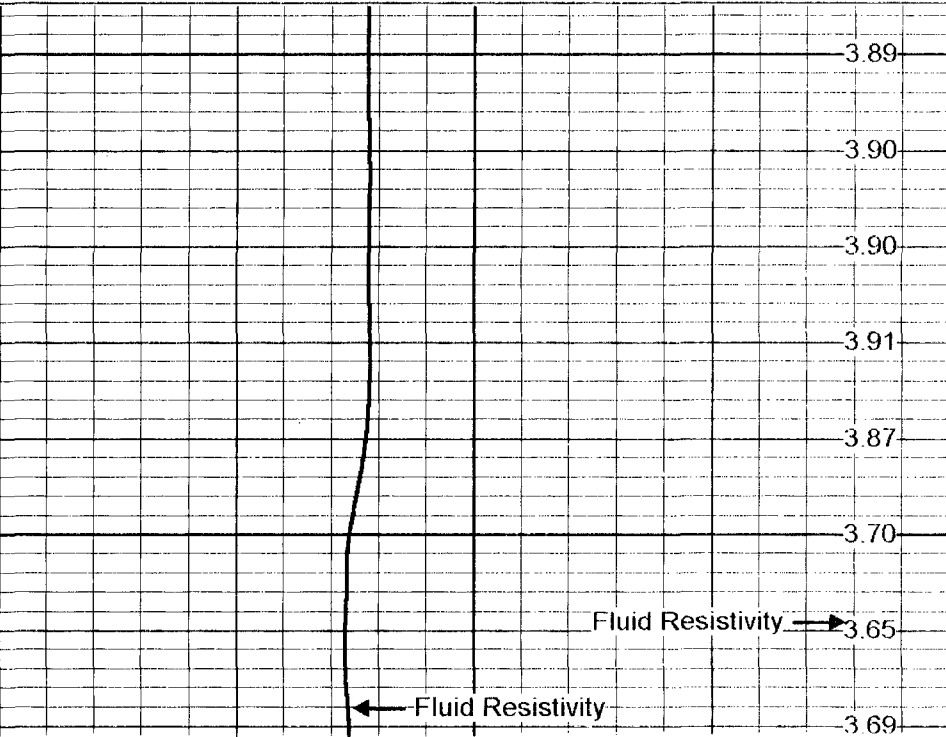
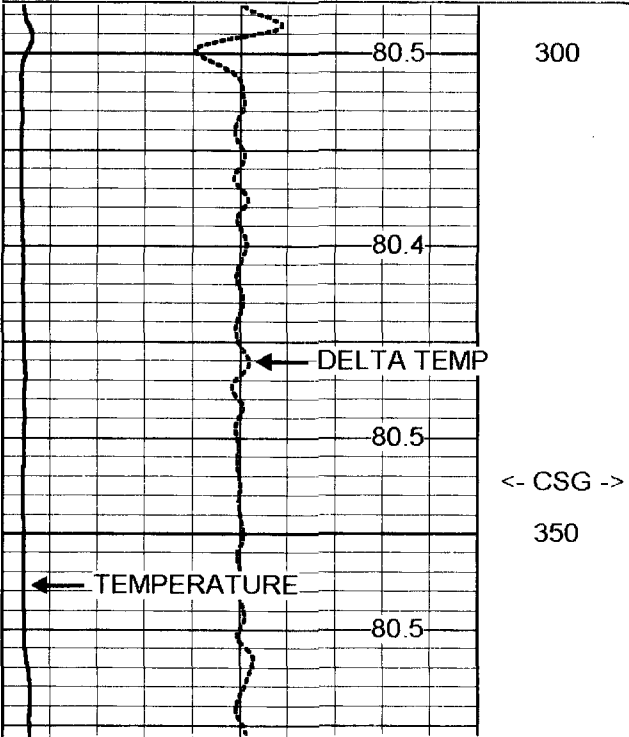


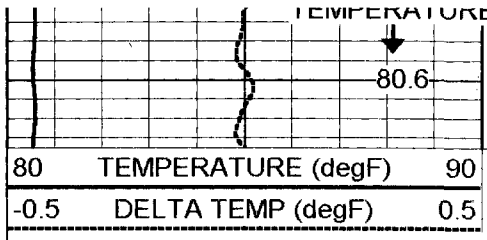
# FRT UP

Database File: pgiamw.db  
 Dataset Pathname: run3/FRTU  
 Presentation Format: firtemp.prs  
 Dataset Creation: Fri Mar 22 17:48:11 2002  
 Charted by: Depth in Feet scaled 1:240

80 TEMPERATURE (degF) 90  
 -0.5 DELTA TEMP (degF) 0.5

0 Fluid Resistivity 10





<- TD ->

