



**FLUID RESISTIVITY
TEMPERATURE
LOG**

Company **Diversified Drilling Corporation**
 Well **ASR - 4R**
 Field **Punta Gorda**
 County **Charlotte** State/Pv **Florida**

Location **City of Punta Gorda
Water Treatment Plant**
 Other Services **XY/GR, DIL
BHC, FLOW
DEVI**

Permanent Datum **G.L.** Elevation **K.B.**
 Log Measured From **G.L.** D.F.
 Drilling Measured From **G.L.** G.L.

| | | |
|------------------------|-----------------|---------------------|
| Date | 11-JAN-2002 | |
| Run Number | THREE | |
| Depth Driller | 805' | |
| Depth Logger | 805' | |
| Bottom Logged Interval | 805' | |
| Top Log Interval | 50' | |
| Open Hole Size | 7.875" | |
| Type Fluid | WATER | |
| Density / Viscosity | 8.35#/NA | |
| Max Recorded Temp. | na | |
| Estimated Cement Top | NA | |
| Time Well Ready | 07:00 1/11/02 | |
| Time Logger on Bottom | 07:45 1/11/02 | |
| Equipment Number | MVG-S-1 | |
| Location | Ft. Myers | |
| Recorded By | S. Miller | |
| Witnessed By | P. D'Amo (MMWH) | J. Rivenburgh (DDC) |
| | B. Balmer (DDC) | |
| Borehole Record | | |
| Run Number | Bit | From |
| ONE | 7.875" | 38' |
| TWO | 31" | 124' |
| THREE | 7.875" | 350' |
| Tubing Record | | |
| Casing Record | Size | Wgt/Ft |
| Surface String | 36" | 0.375" WT |
| Prot. String | 32" | 0.375" WT |
| Production String | 28" | 0.375" WT |
| Liner | | |
| Invoice No. | 2002007 | P.O. # |
| | | Job No. 6022 |
| | | *FIELD PRINT* |

<<< Fold Here >>>

All interpretations are opinions based on inferences from electrical or other measurements and we cannot and do not guarantee the accuracy or correctness of any interpretation, and we shall not, except in the case of gross or willful negligence on our part, be liable or responsible for any loss, costs, damages, or expenses incurred or sustained by anyone resulting from any interpretation made by any of our officers, agents or employees. These interpretations are also subject to our general terms and conditions set out in our current Price Schedule.

Comments

STATIC (since 10:30, 1/10/02) and DYNAMIC down passes performed.

Rm= ohm-m @ degF (DYNAMIC). Q= gpm.
FLUID RESISTIVITY CALIBRATION REPORT

(Performed: 14-DEC-01 15:30)

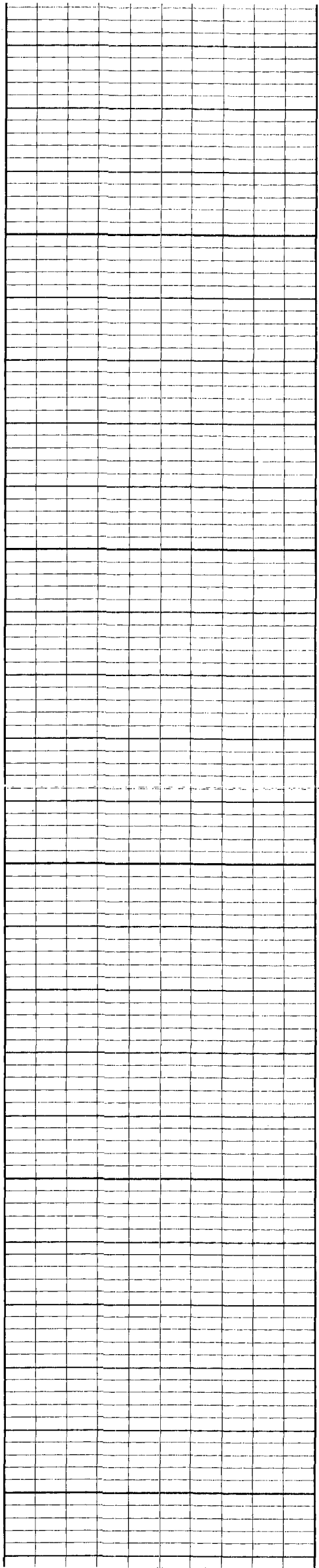
| | |
|-------|---------|
| OHM-M | CPS |
| 2.230 | 2252.61 |
| 3.082 | 2445.45 |
| 4.895 | 2900.12 |

TEMPERATURE CALIBRATION REPORT

(performed: 14-DEC-01 15:45)

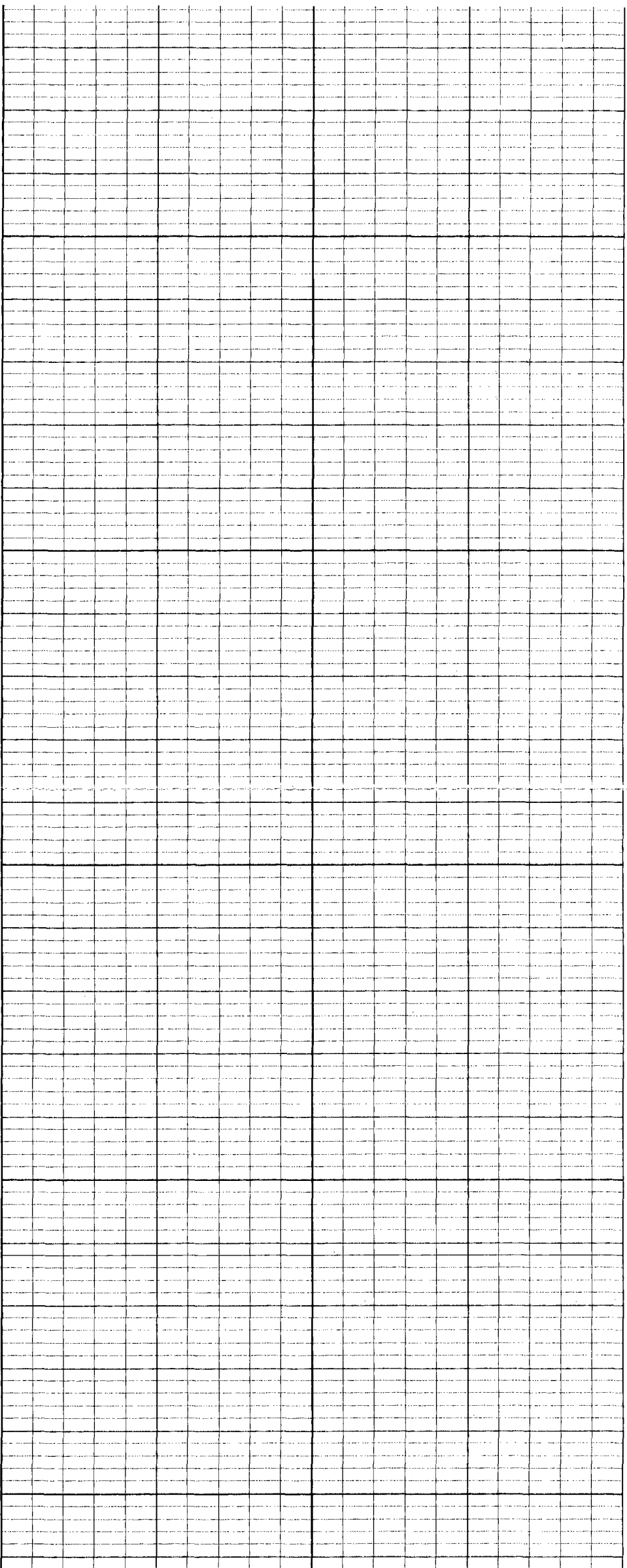
| | |
|-------|---------|
| DEG-F | CPS |
| 36.1 | 2172.13 |
| 151.8 | 5684.71 |

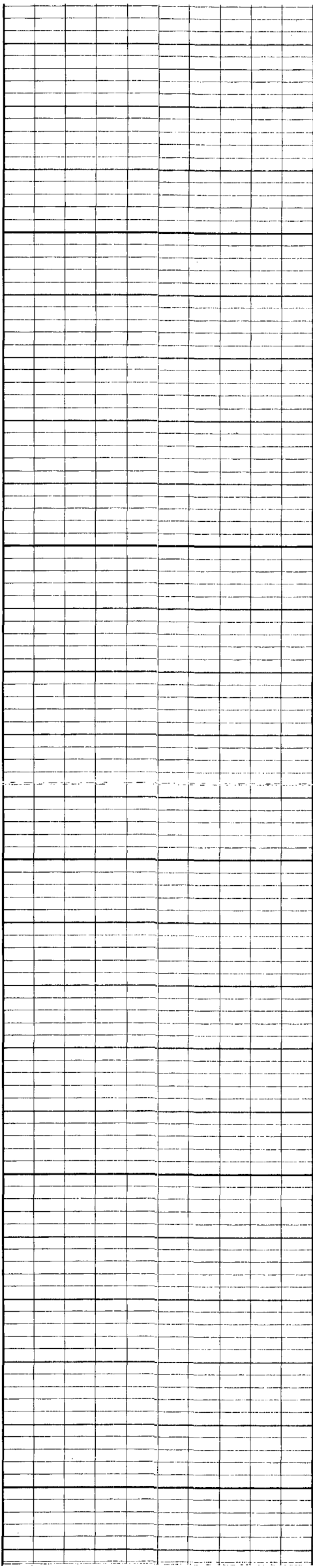
Database File: pgasr-4r.db
 Dataset Pathname: run3/DFRT
 Presentation Format: qsd-pg.prs
 Dataset Creation: Fri Jan 11 14:08:56 2002
 Charted by: Depth in Feet scaled 1:240



400

500

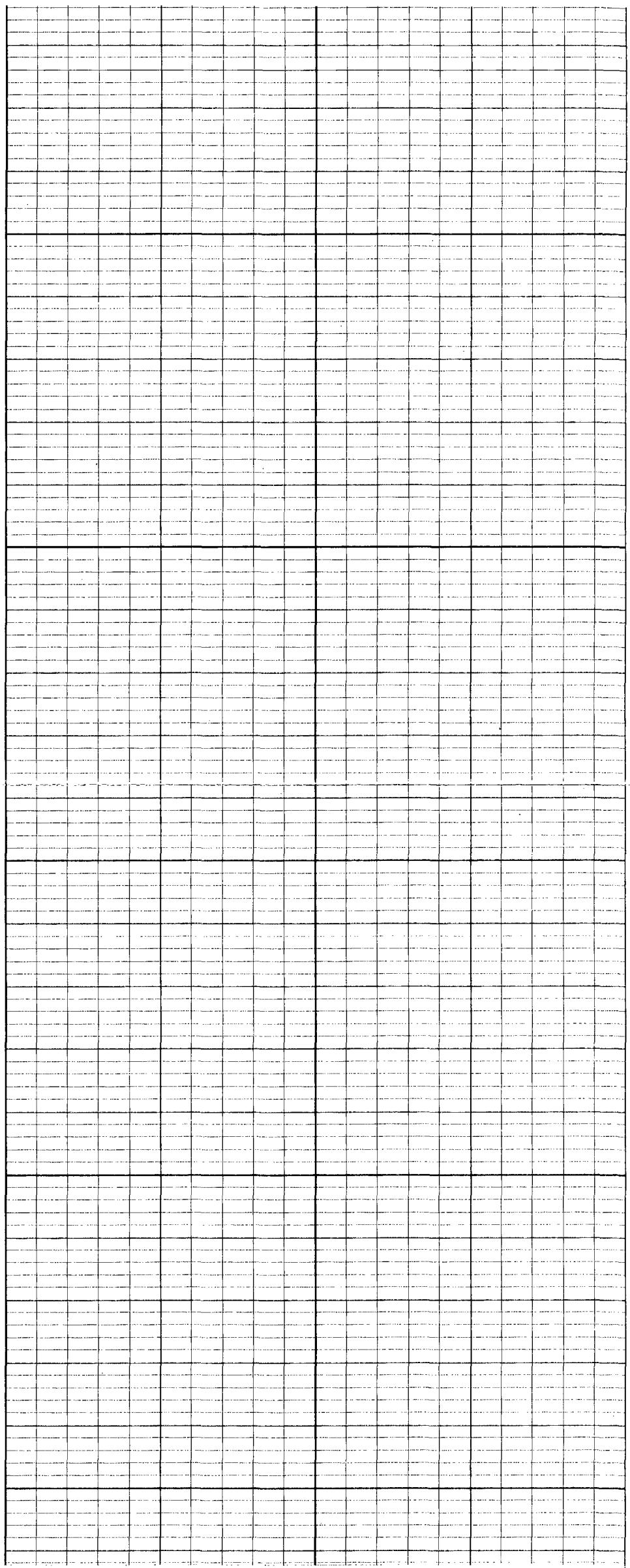




600

700

800



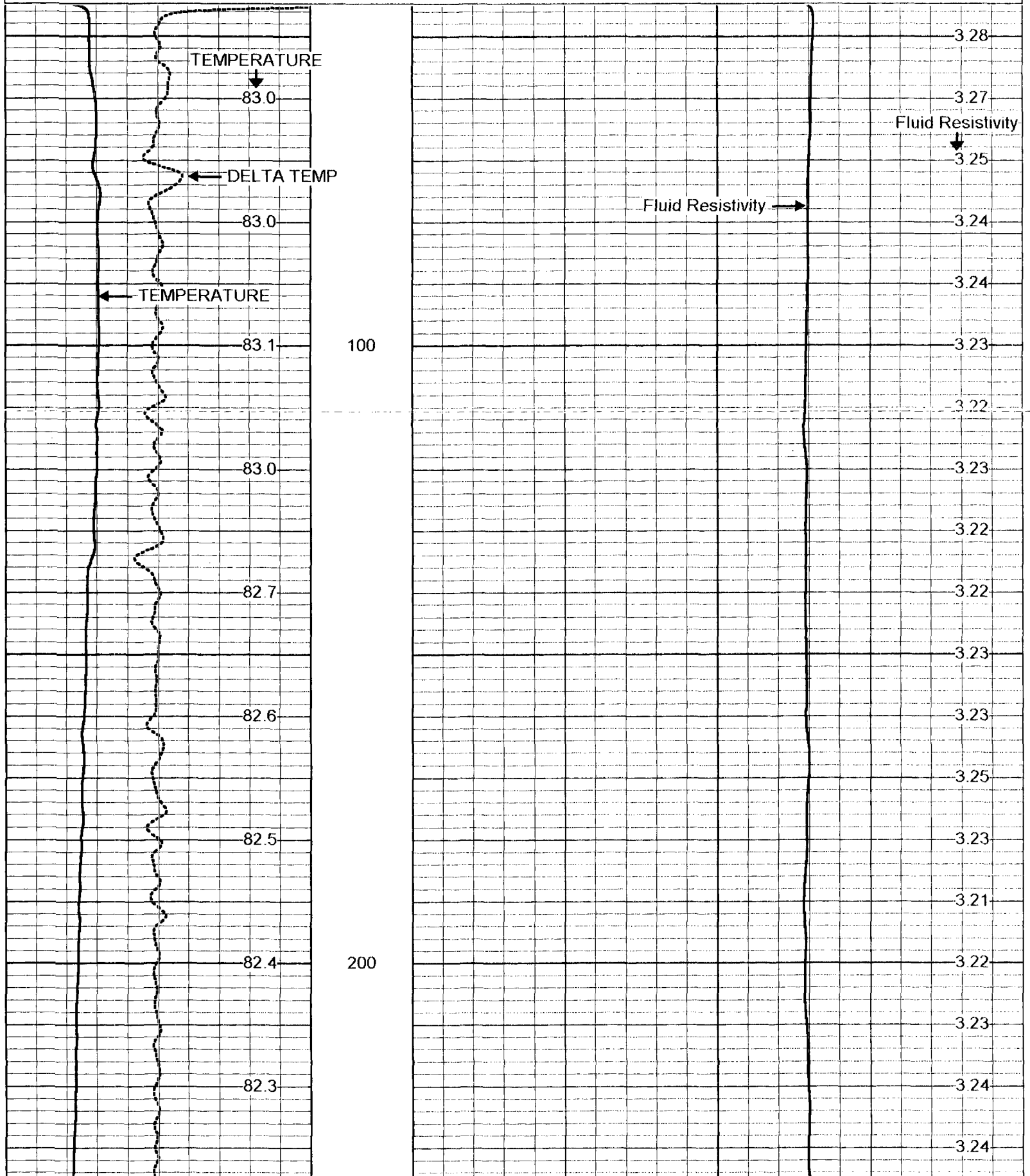


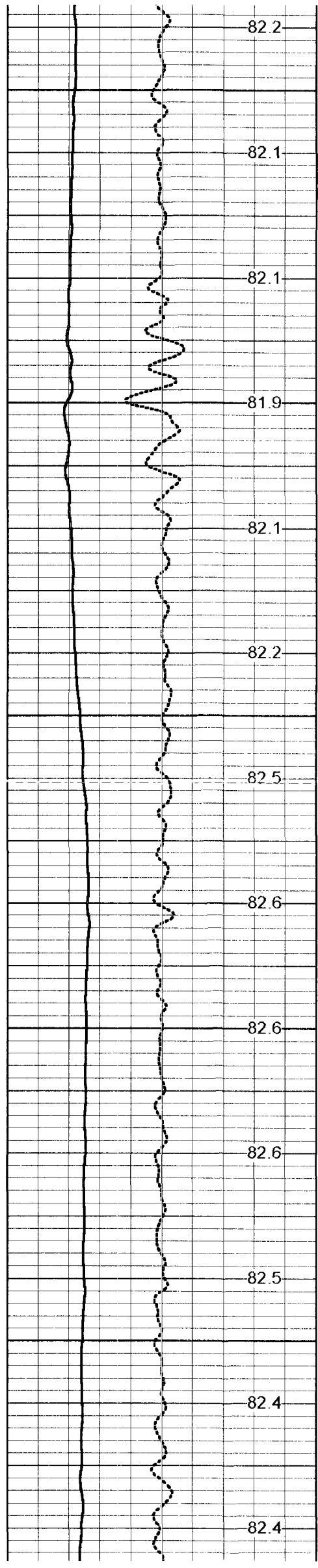
STATIC FRT DOWN

Database File: pgasr-4r.db
Dataset Pathname: run3/SFRT
Presentation Format: frtpg2.prs
Dataset Creation: Fri Jan 11 13:51:23 2002
Charted by: Depth in Feet scaled 1:240

80 TEMPERATURE (degF) 90
-0.5 DELTA TEMP (degF) 0.5

0 Fluid Resistivity 5

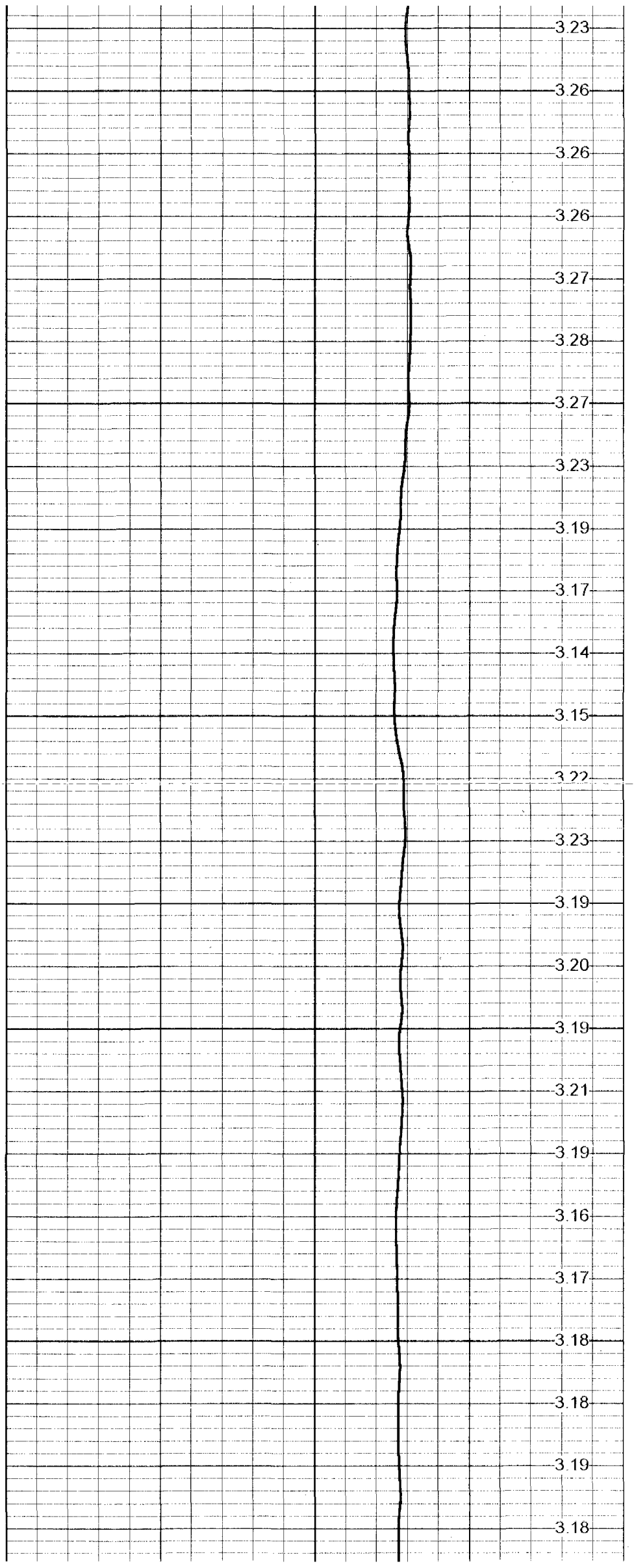


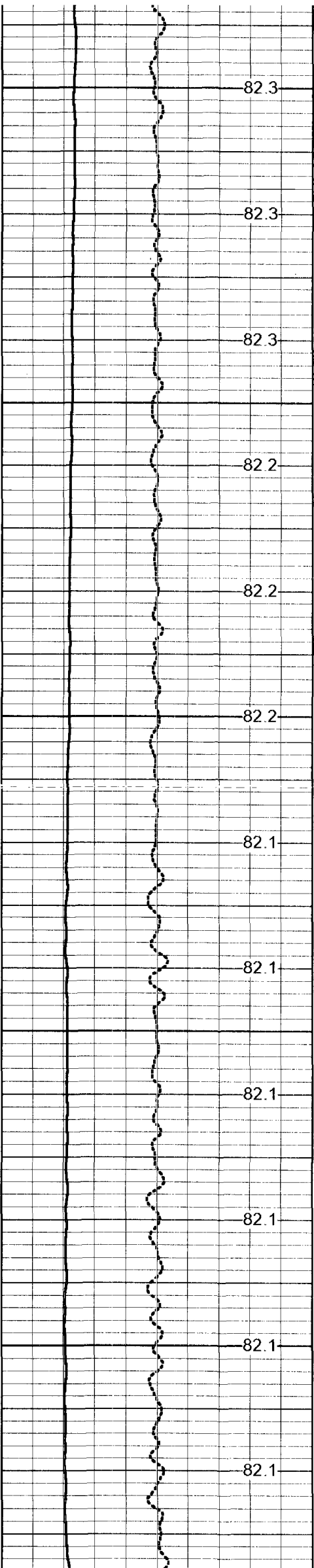


300

<- CSG ->

400

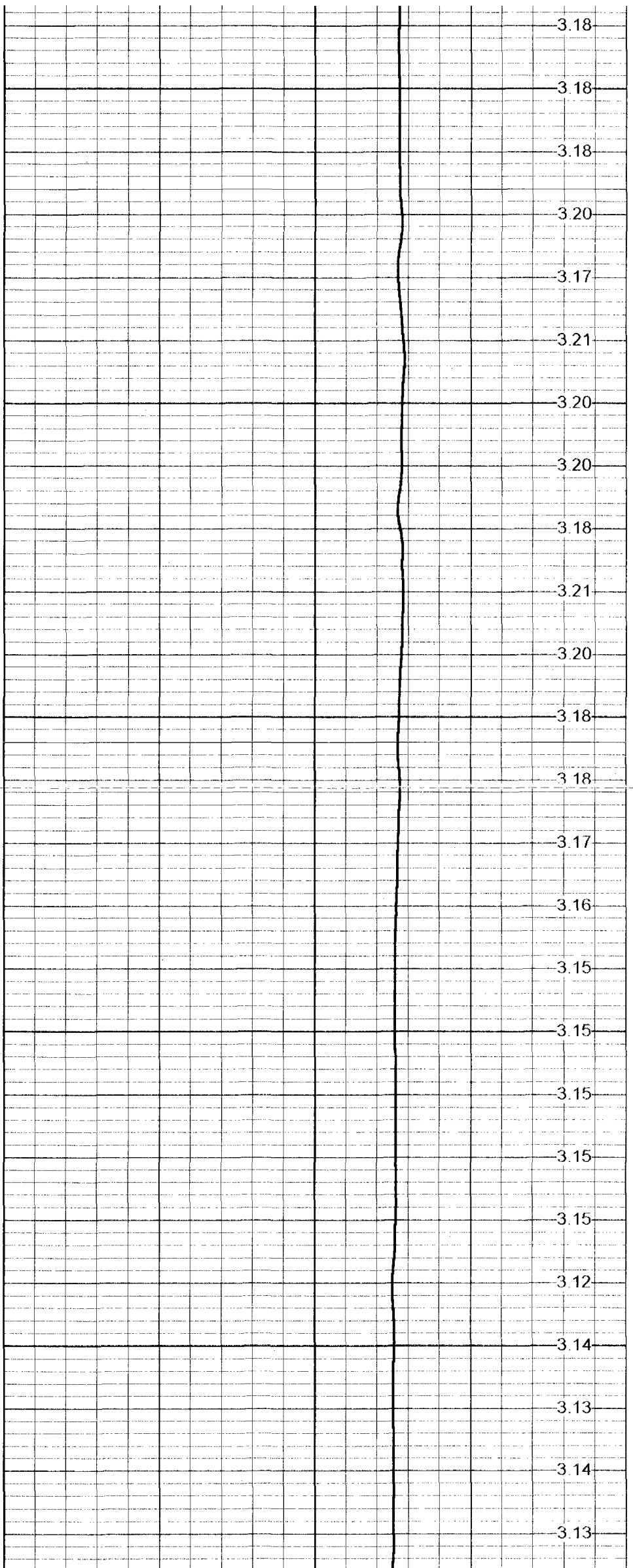




500

600

700



3.18

3.18

3.18

3.20

3.17

3.21

3.20

3.20

3.18

3.21

3.20

3.18

3.18

3.17

3.16

3.15

3.15

3.15

3.15

3.15

3.12

3.14

3.13

3.14

3.13

