



**HIGH RESOLUTION
TEMPERATURE /
GAMMA RAY**

Company **Diversified Drilling Corp.**
 Well **ASR No. 3**
 Field **Punta Gorda**
 County **Charlotte**
 State/Prv **Florida**

Company **Diversified Drilling Corporation**
 Well **ASR No. 3**
 Field **Punta Gorda**
 County **Charlotte**
 State/Prv **Florida**

Location
City of Punta Gorda
Water Treatment Plant

Other Services
NONE

Permanent Datum **G.L.** Elevation
 Log Measured From **G.L.**
 Drilling Measured From **G.L.**

Date	19-DEC-2001	
Run Number	FIVE	
Depth Driller	804'	
Depth Logger	Cement Plug=792'	
Bottom Logged Interval	792'	
Top Log Interval	SURFACE	
Open Hole Size	25"	
Type Fluid	WATER	
Density / Viscosity	N/A/N/A	
Max. Recorded Temp.	131.5 degF	
Estimated Cement Top	5'	
Time Well Ready	11:15 12/19/01	
Time Logger on Bottom	11:15 12/19/01	
Equipment Number	MVG-S-1	
Location	Fl. Myers	
Recorded By	S. Miller	
Witnessed By	P. D'Amo (MWH)	B. Kohlmeier (DDC)
		C. Godwin (DDC)

Borehole Record		Tubing Record	
Run Number	Bit Size	From	To
ONE	7.625"	120'	351'
TWO	7.875"	350'	810'
THREE	25"	350'	815'

Casing Record		Top		Bottom	
String	Size	Wgt/Ft	Top	Bottom	Weight
Surface String	32"	0.375" WT	SURFACE	140'	140'
Prot. String	26"	0.375" WT	SURFACE	350'	350'
Production String	17.4" PVC	15.25" ID	SURFACE	810'	810'
Liner					

Invoice No. 2001214 P.O. # 13339 Job No. 6022 * FINAL PRINT *

<<< Fold Here >>>

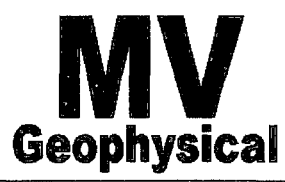
All interpretations are opinions based on inferences from electrical or other measurements and we cannot and do not guarantee the accuracy or correctness of any interpretation, and we shall not, except in the case of gross or willful negligence on our part, be liable or responsible for any loss, costs, damages, or expenses incurred or sustained by anyone resulting from any interpretation made by any of our officers, agents or employees. These interpretations are also subject to our general terms and conditions set out in our current Price Schedule.

Comments

Cement Plug at 792'

TEMPERATURE CALIBRATION
 (Performed: 15:35, 11/30/01)

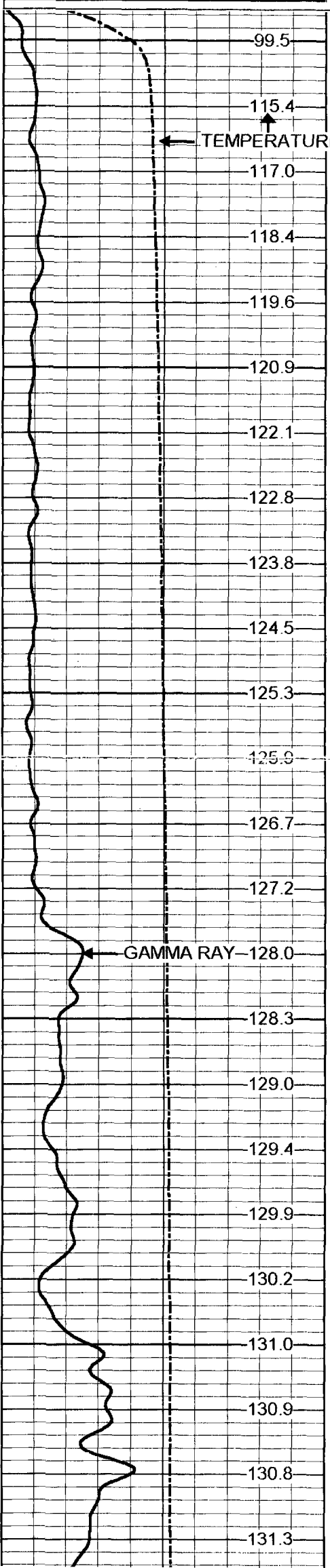
Reference (degF)	Reading (CPS)
39.1	150.426
155.5	2735.35



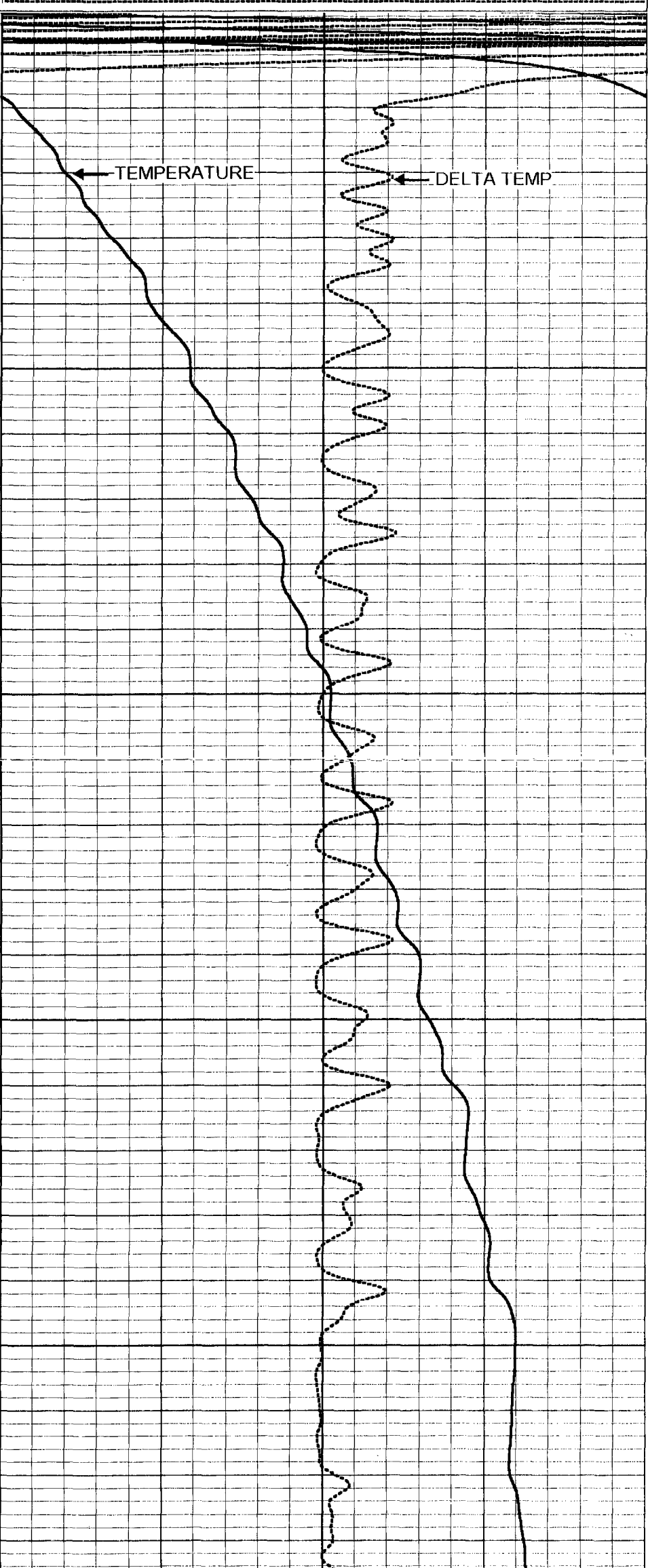
Stage 3&4 Temperature Profile

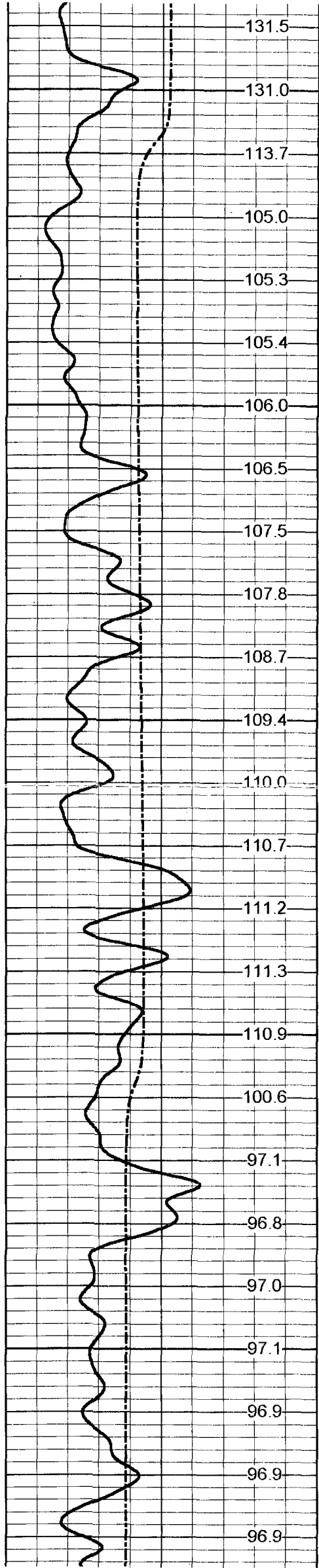
Database File: pgasr-3.db
 Dataset Pathname: run4/pass4
 Presentation Format: cttlpg2.prs
 Dataset Creation: Wed Dec 19 11:23:03 2001 by Log VER_5.3
 Charted by: Depth in Feet scaled 1:240

0 TEMP (degF) 250
0 GAMMA RAY (GAPI) 100



75 TEMPERATURE (degF) 95
-1 DELTA TEMP (degF) 1





131.5

131.0

113.7

105.0

105.3

105.4

106.0

106.5

107.5

107.8

108.7

109.4

110.0

110.7

111.2

111.3

110.9

100.6

97.1

96.8

97.0

97.1

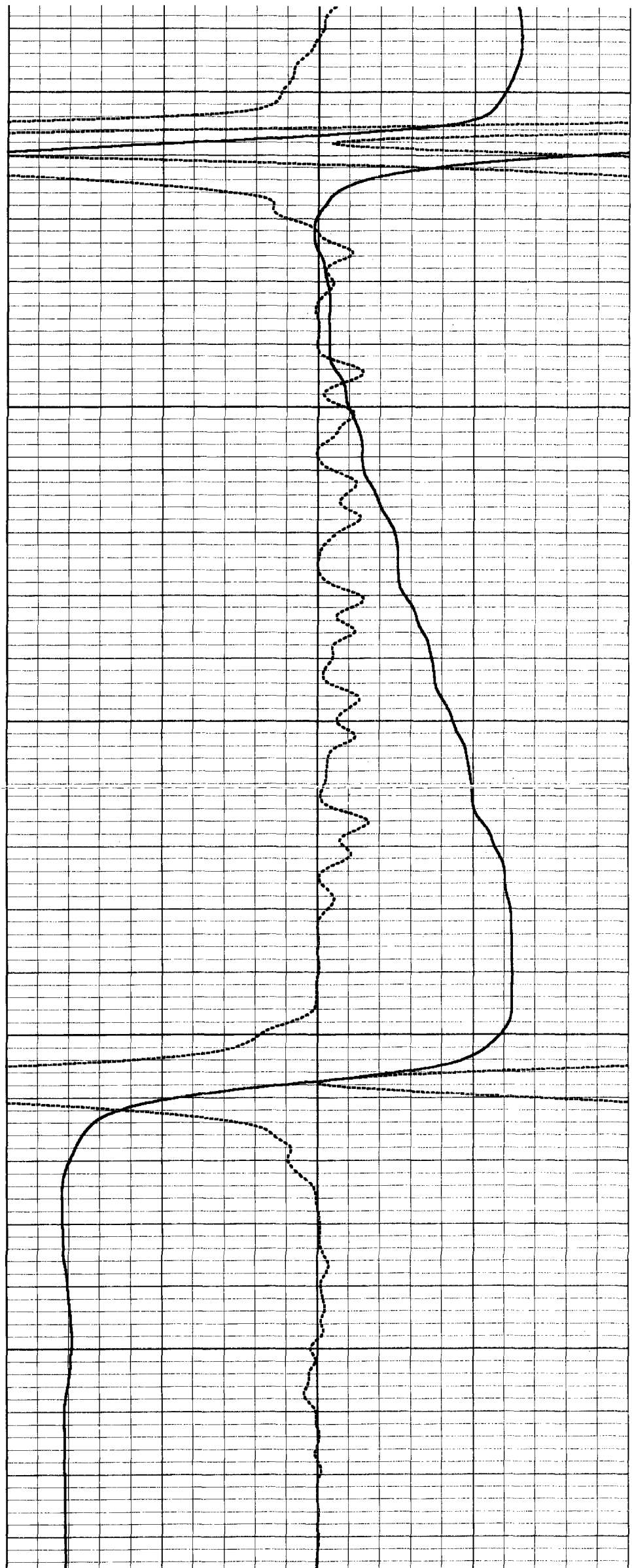
96.9

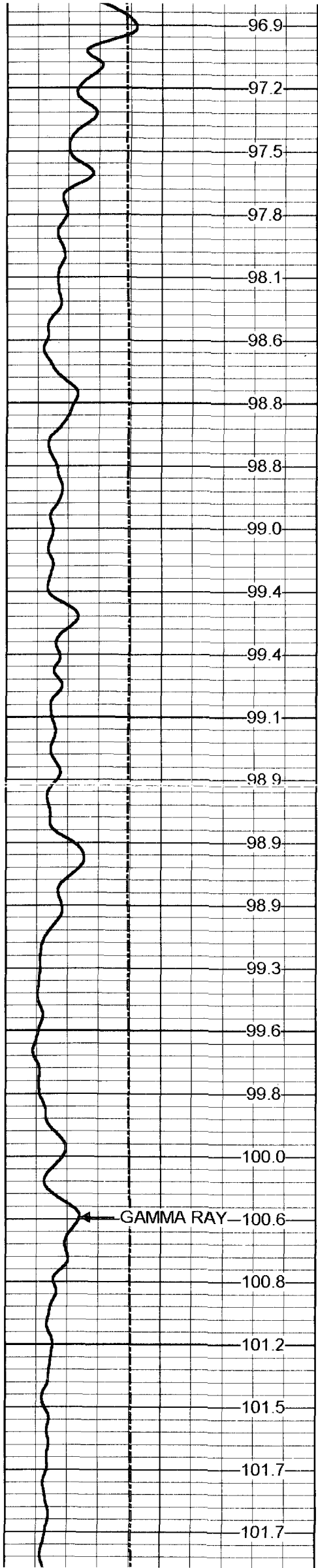
96.9

96.9

300

400

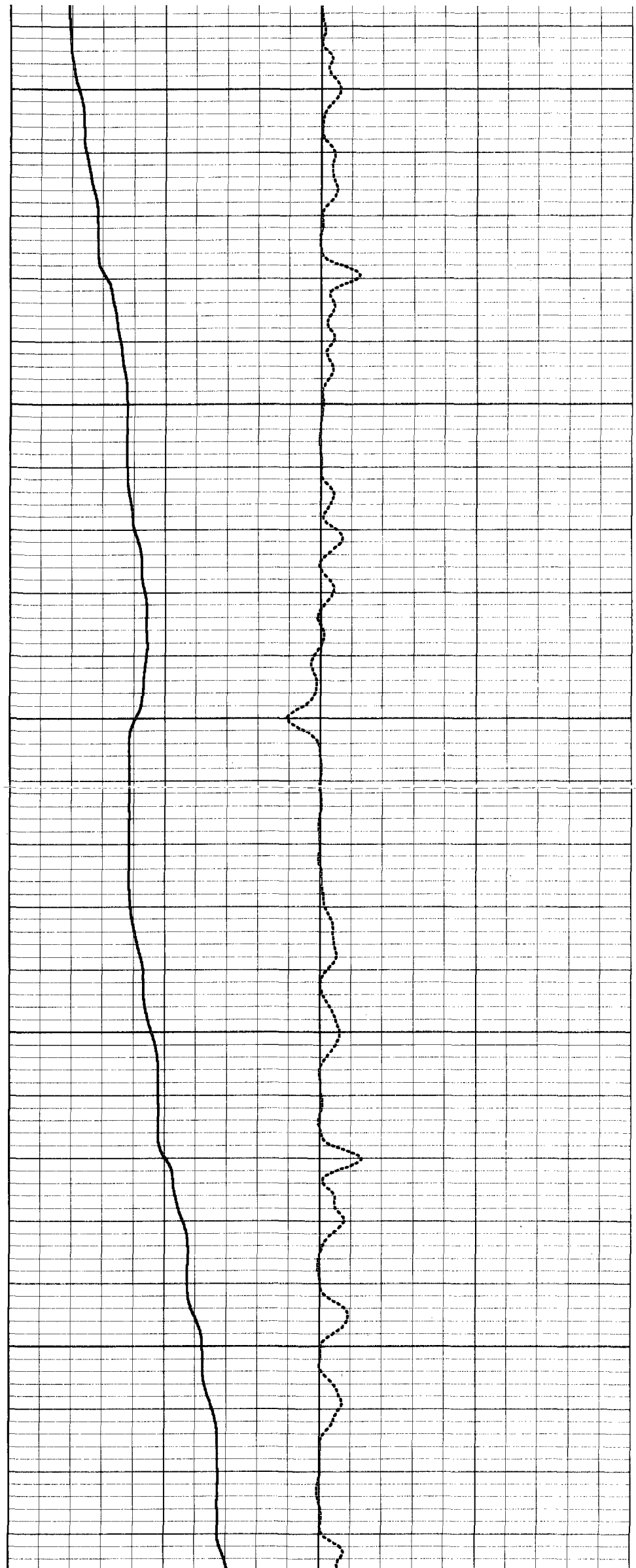


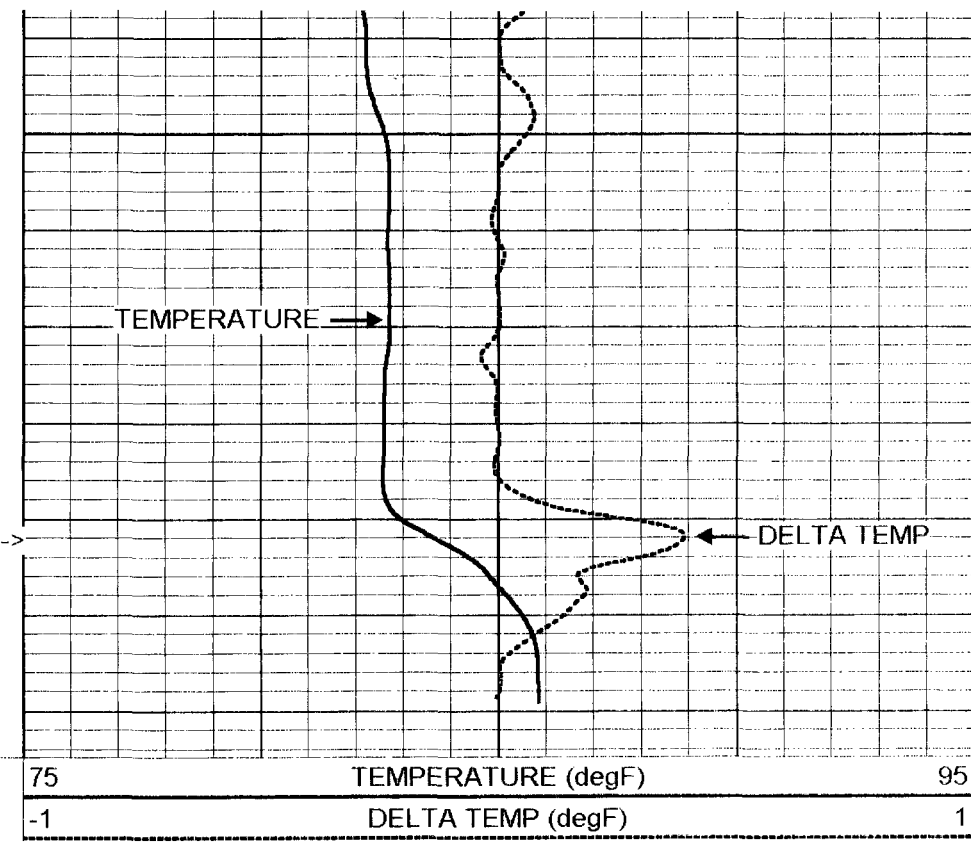
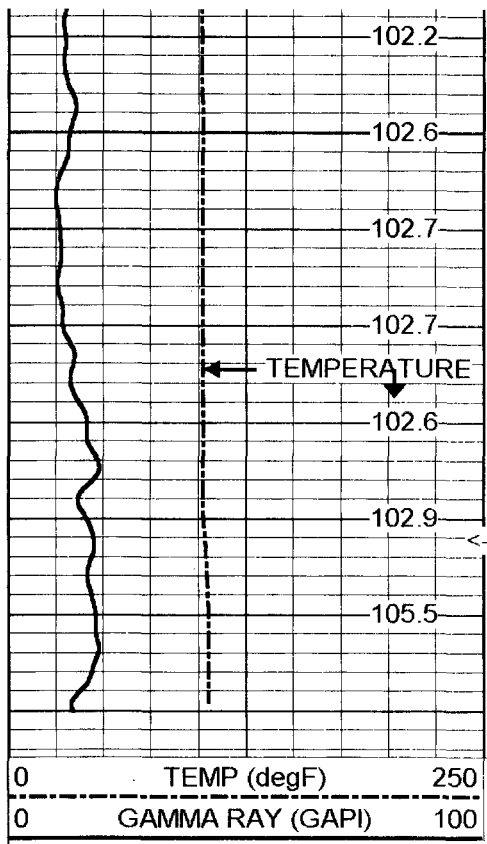


500

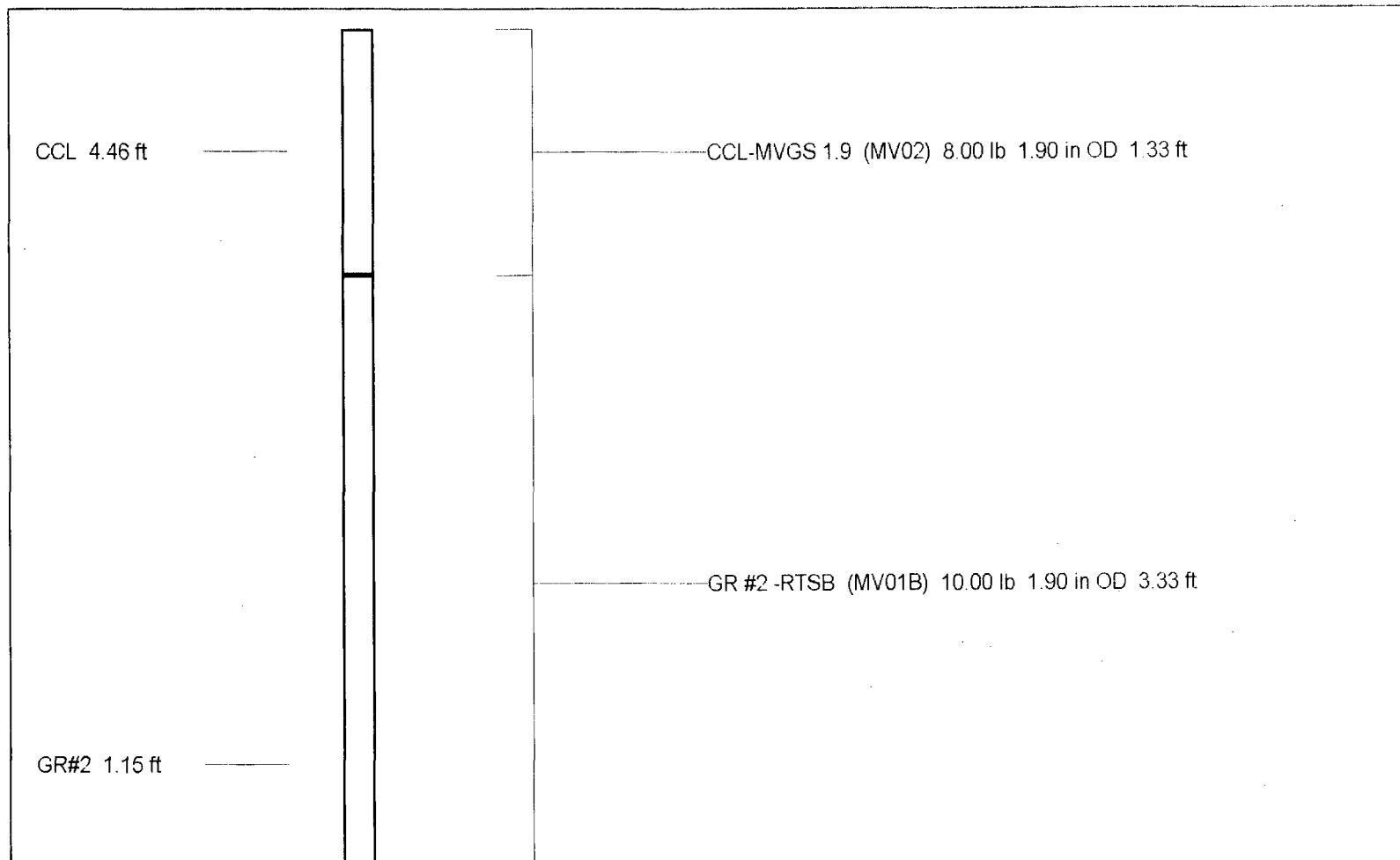
600

700





Gamma Ray Calibration Report		
Serial Number:	MV01B	
Tool Model:	RTSB	
Performed:	Tue Nov 13 07:15:17 2001	
Calibrator Value:	120	GAPI
Background Reading:	5.55556	cps
Calibrator Reading:	134.922	cps
Sensitivity:	0.927596	GAPI/cps



TEMP 0.10 ft



TEMP-RTS (MV02) 2.00 lb 1.90 in OD 0.46 ft

Dataset:	run4/pass4
Total Length:	5.12 ft
Total Weight:	20.00 lb
O.D.	1.90 in