



**FLUID RESISTIVITY  
TEMPERATURE  
LOG**

Company Diversified Drilling Corp. Well ASR No. 2 Field Punta Gorda County Charlotte State/Prv Florida	Company Diversified Drilling Corporation Well ASR No. 2 Field Punta Gorda County Charlotte State/Prv Florida
Location Permanent Datum Log Measured From Drilling Measured From	City of Punta Gorda Water Treatment Plant G.L. G.L. G.L.
Location Other Services XY/GR, DIL/SP BHCVDL FLOW	Elevation K.B. D.F. G.L.

Date	12-NOV-2001	
Run Number	TWO	
Depth Driller	800'	
Depth Logger	801'	
Bottom Logged Interval	801'	
Top Log Interval	SURFACE	
Open Hole Size	7.875"	
Type Fluid	WATER	
Density / Viscosity	NA/NA	
Max. Recorded Temp.	see FRT log	
Estimated Cement Top	NA	
Time Well Ready	08:30 11/12/01	
Time Logger on Bottom	08:30 11/12/01	
Equipment Number	MV/GS-1	
Location	Ft. Myers	
Recorded By	S. MILLER	
Witnessed By	P. D'Amo (MWH)	

Borehole Record				Tubing Record			
Run Number	Bit	From	To	Size	Weight	From	To
ONE	7.875"	120'	351'				
TWO	7.875"	345'	800'				

Casing Record			
Surface String	Size	Wgt/Ft	Top
Prot. String	32"	0.375" WT	SURFACE
Production String	26"	0.375" WT	SURFACE
Liner			

Invoice No.	2001180	P.O. #.	14531	Job No.	6022	* FINAL PRINT *
-------------	---------	---------	-------	---------	------	-----------------

<<< Fold Here >>>

All interpretations are opinions based on inferences from electrical or other measurements and we cannot and do not guarantee the accuracy or correctness of any interpretation, and we shall not, except in the case of gross or willful negligence on our part, be liable or responsible for any loss, costs, damages, or expenses incurred or sustained by anyone resulting from any interpretation made by any of our officers, agents or employees. These interpretations are also subject to our general terms and conditions set out in our current Price Schedule.

**Comments**

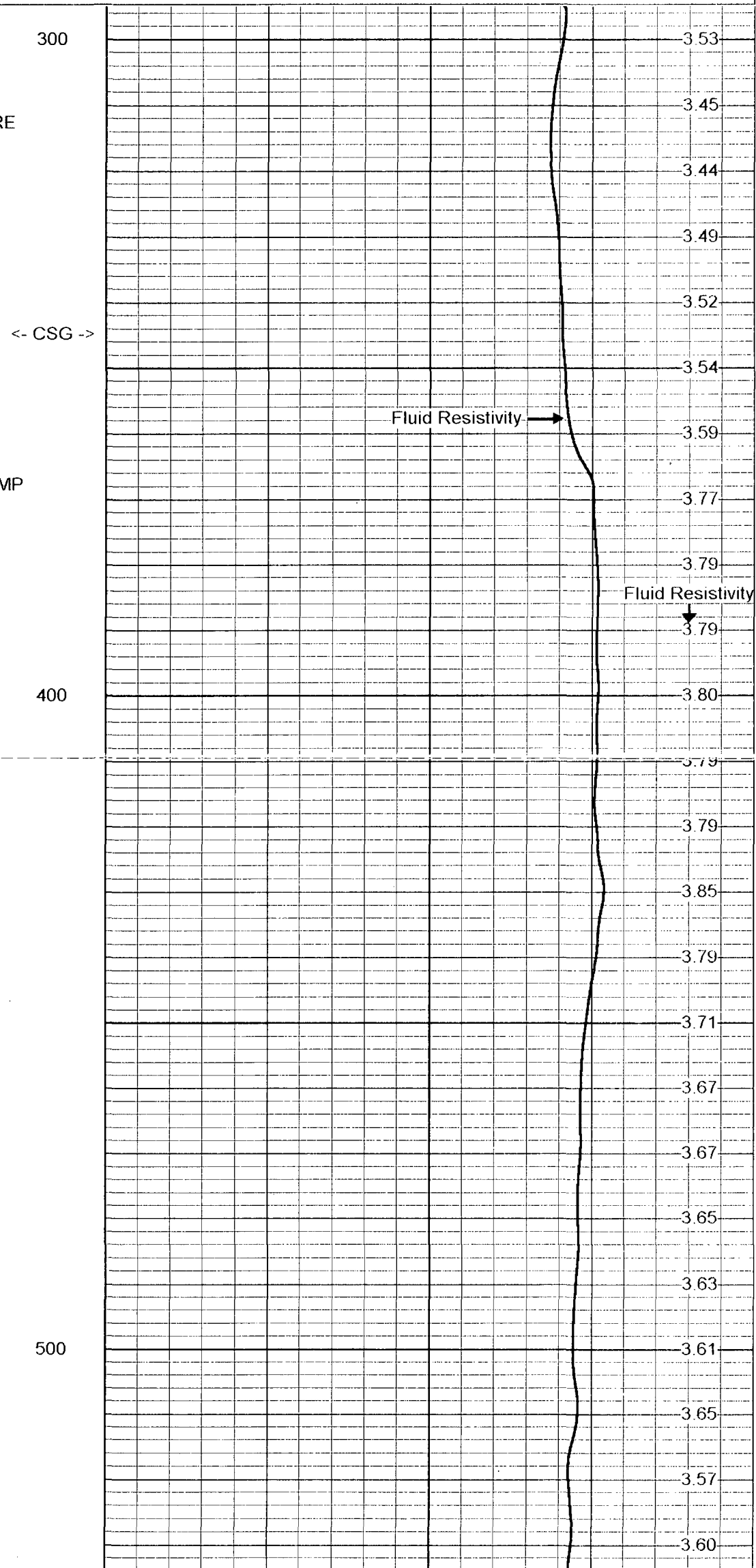
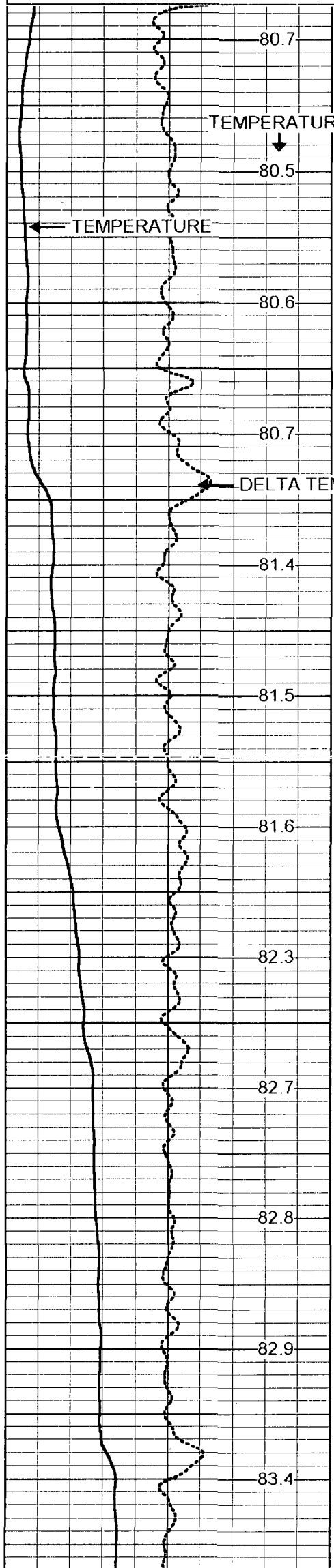
STATIC (since 16:00, 11/7/01) and DYNAMIC down passes performed.  
 Rm=3.846 ohm-m @ 77.9 degF (DYNAMIC). Q=645 gpm.  
**FLUID RESISTIVITY CALIBRATION REPORT**  
 (Performed: 27-OCT-01 14:15)  
 OHM-M      CPS  
 0.951      1702.35  
 2.136      2265.54  
 5.112      4111.254  
**TEMPERATURE CALIBRATION REPORT**  
 (performed: 27-OCT-01 16:45)  
 DEG-F      CPS  
 36.1      2172.13  
 151.8      5684.71

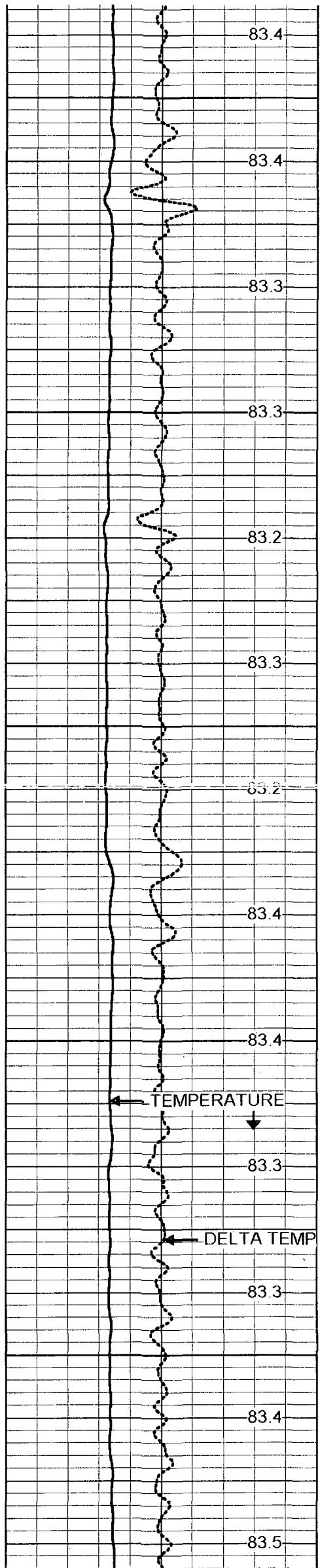


# DYNAMIC DOWN

Database File: pgasr2.db  
 Dataset Pathname: run2/DFRT  
 Presentation Format: frtpg2.prs  
 Dataset Creation: Mon Nov 12 18:22:26 2001  
 Charted by: Depth in Feet scaled 1:240

-0.5 DELTA TEMP (degF) 0.5



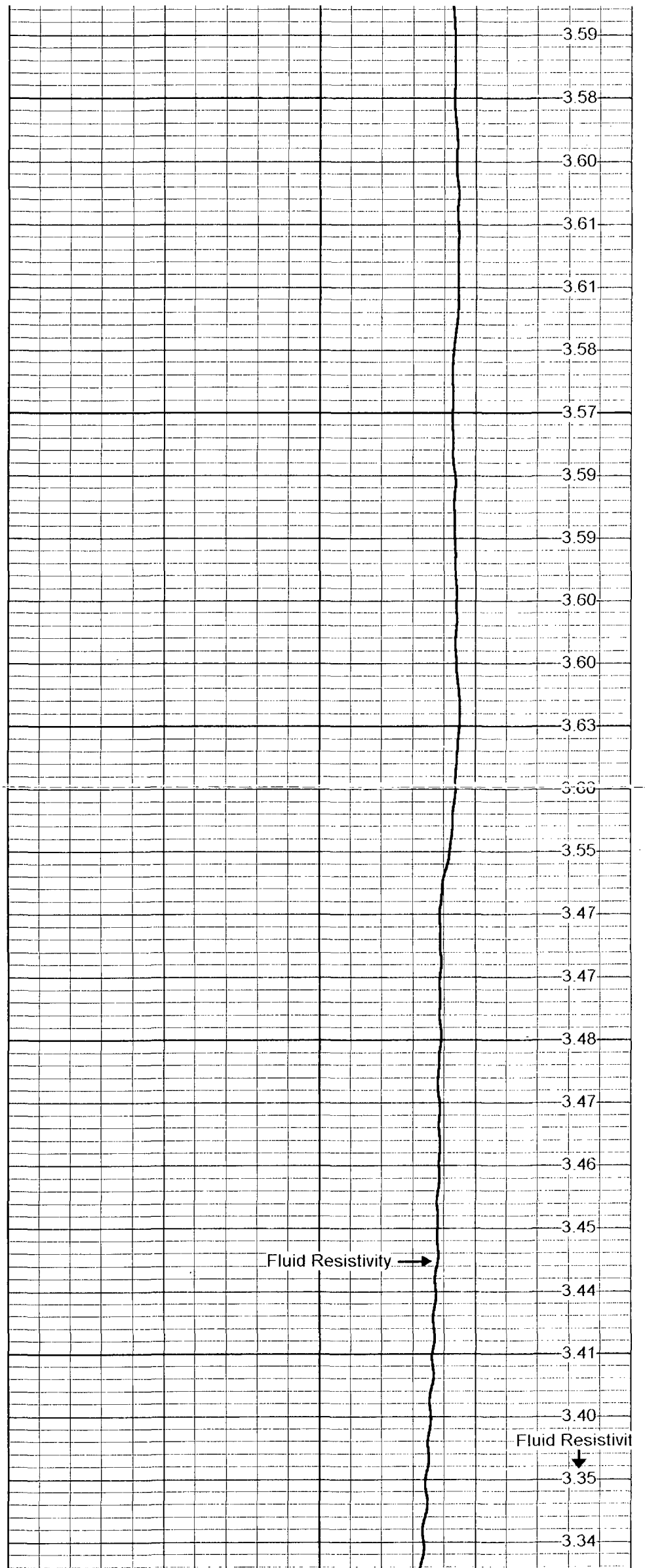


600

700

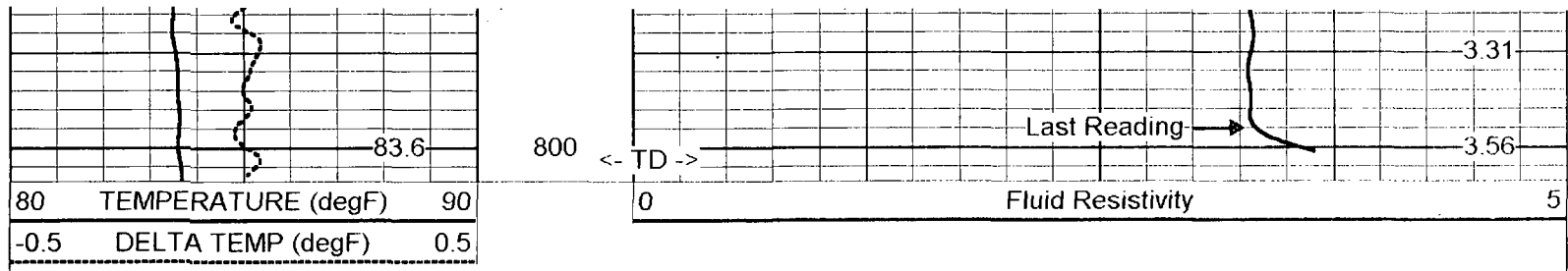
← TEMPERATURE  
↓

← DELTA TEMP



Fluid Resistivity →

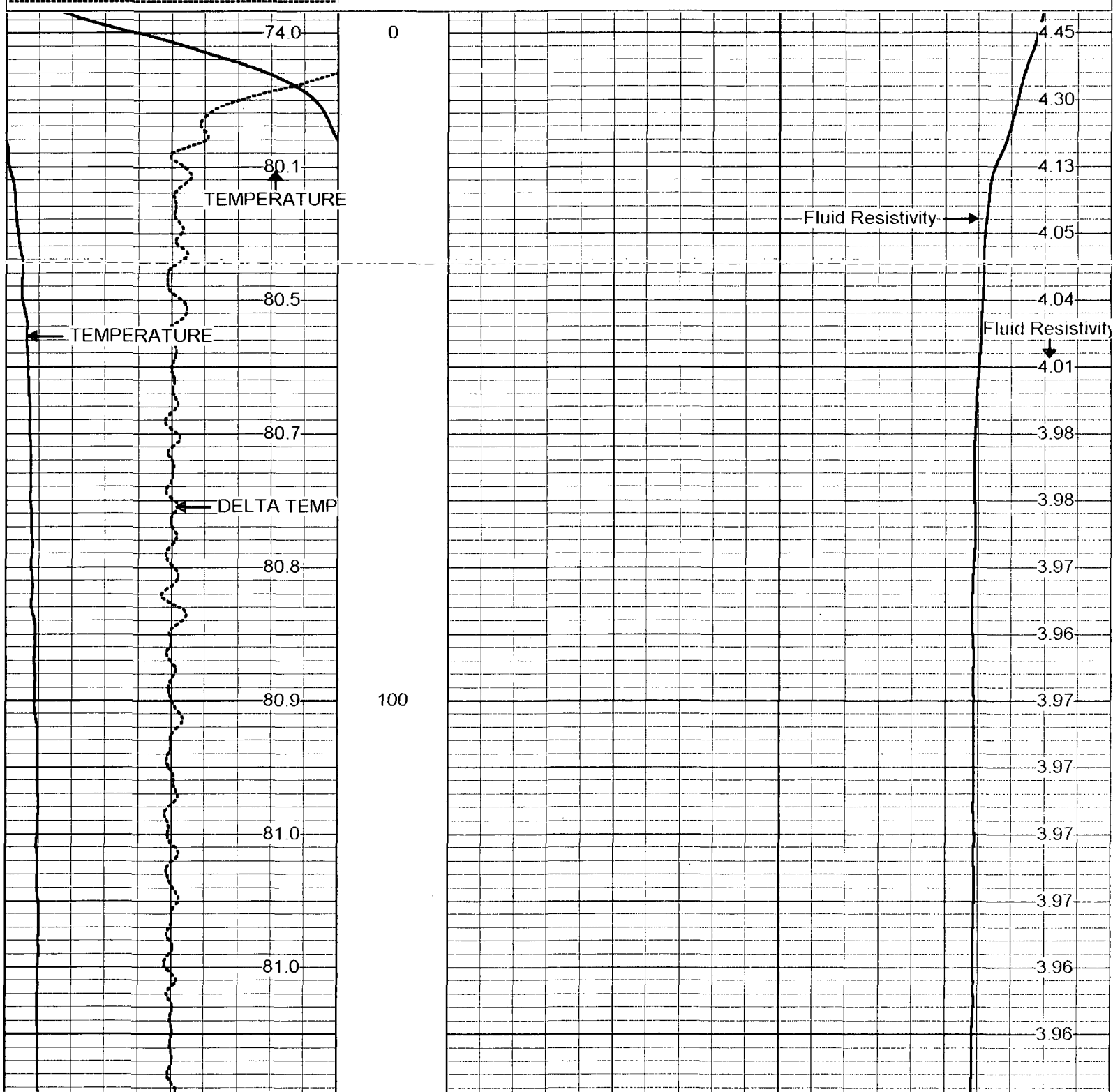
Fluid Resistivity  
↓

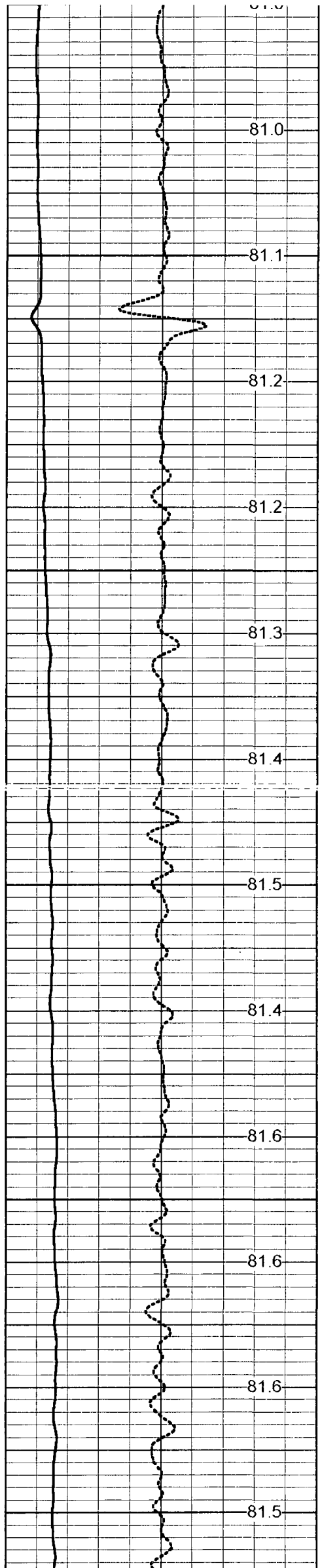


# MV Geophysical

## STATIC DOWN

Database File: pgasr2.db  
 Dataset Pathname: run2/SFRT  
 Presentation Format: frtpg2.prs  
 Dataset Creation: Mon Nov 12 18:23:27 2001  
 Charted by: Depth in Feet scaled 1:240



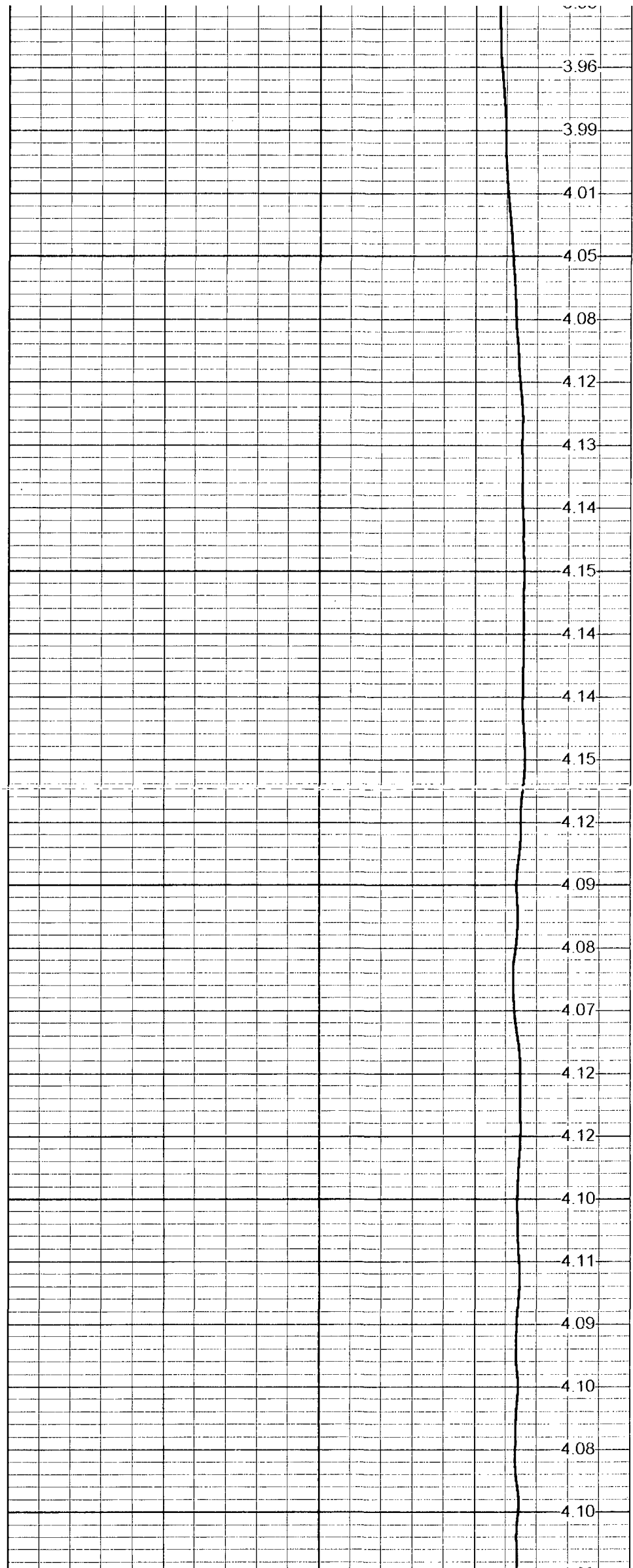


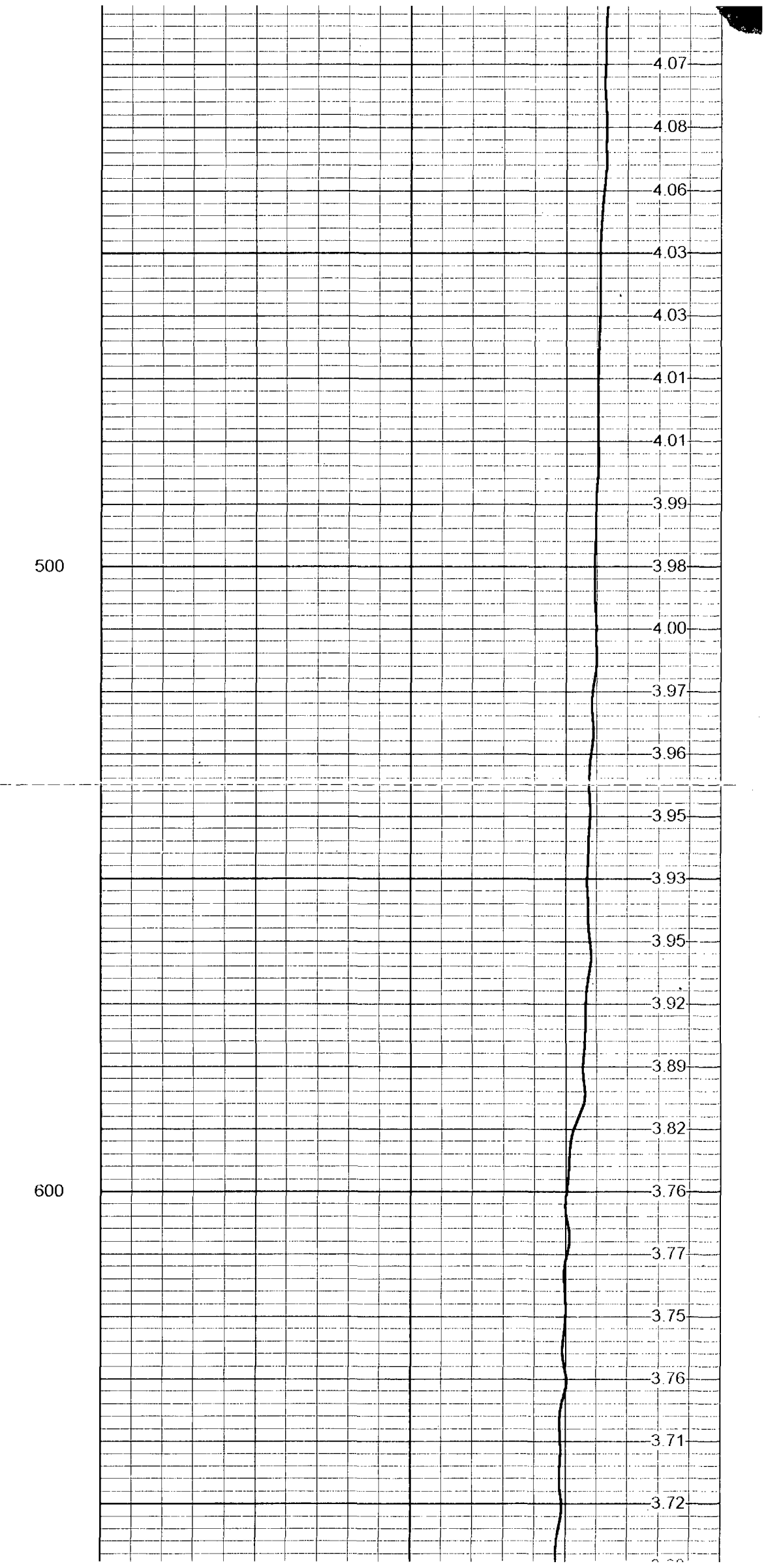
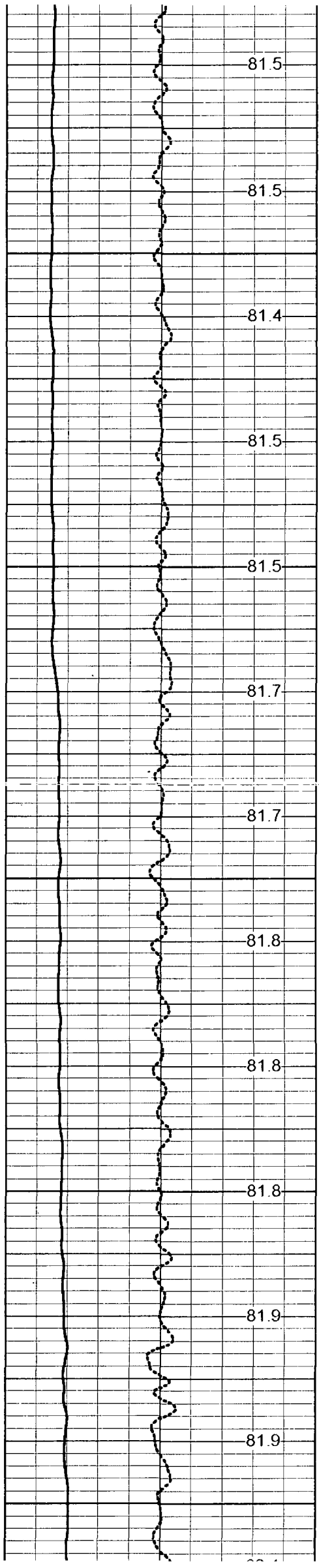
200

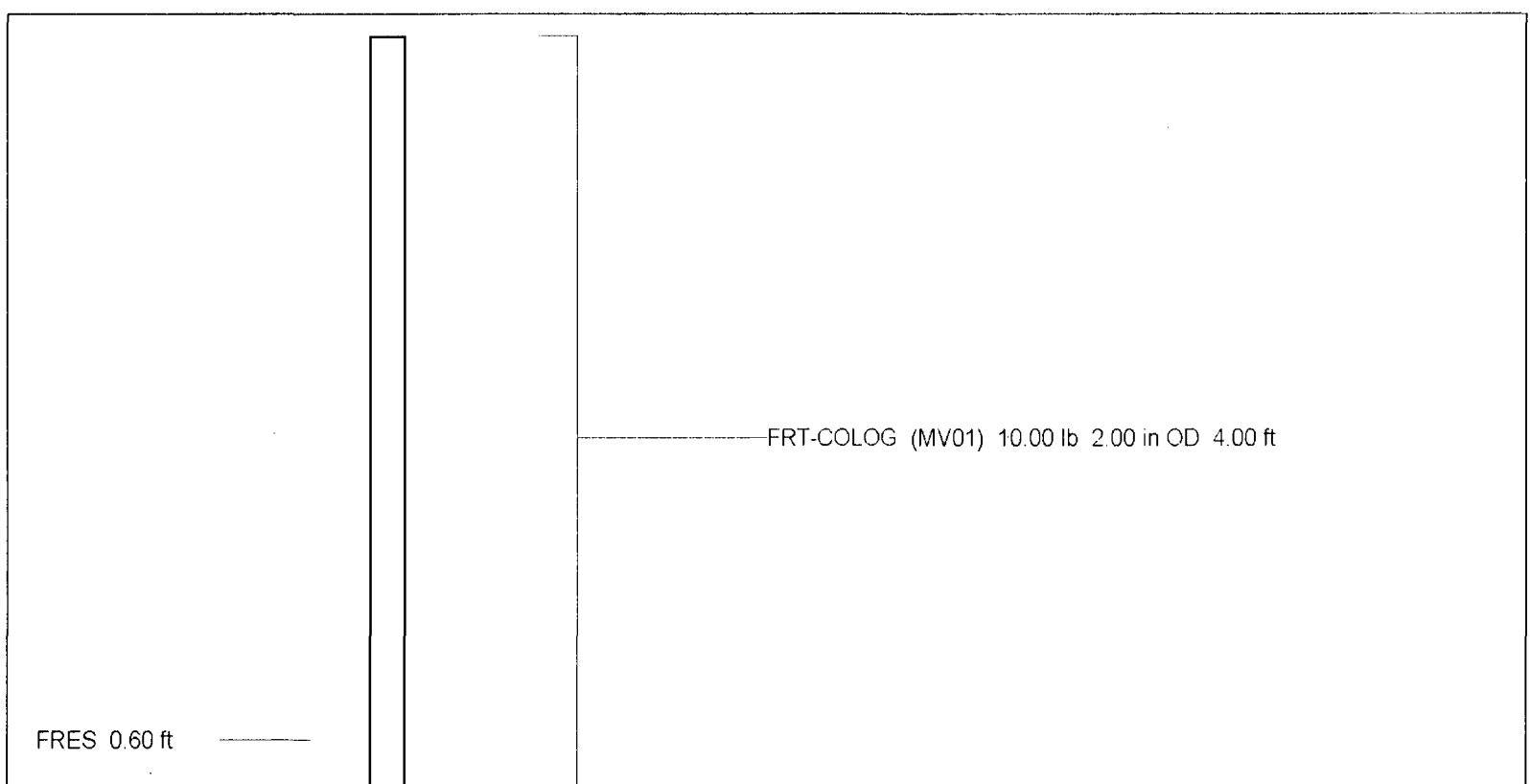
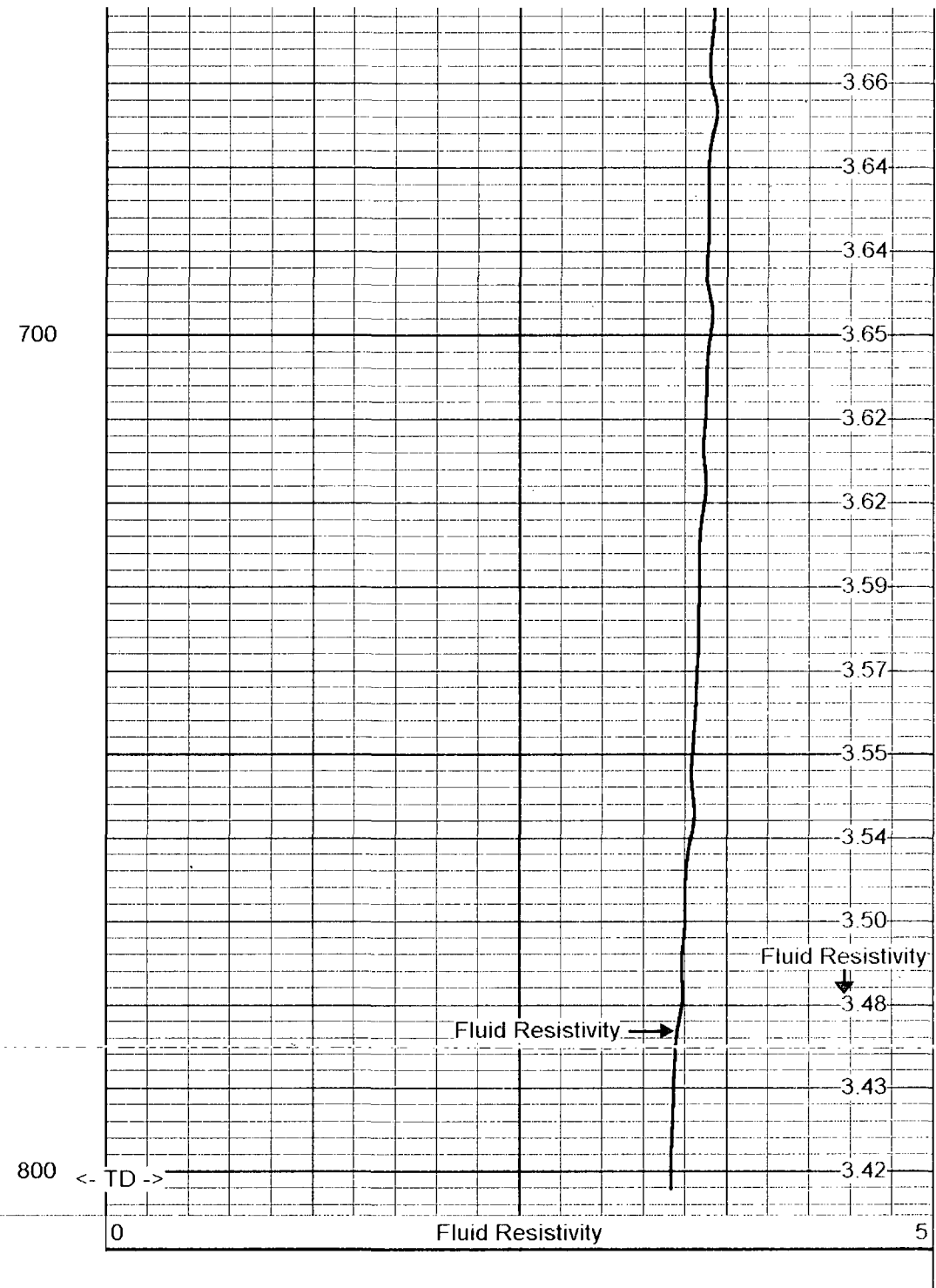
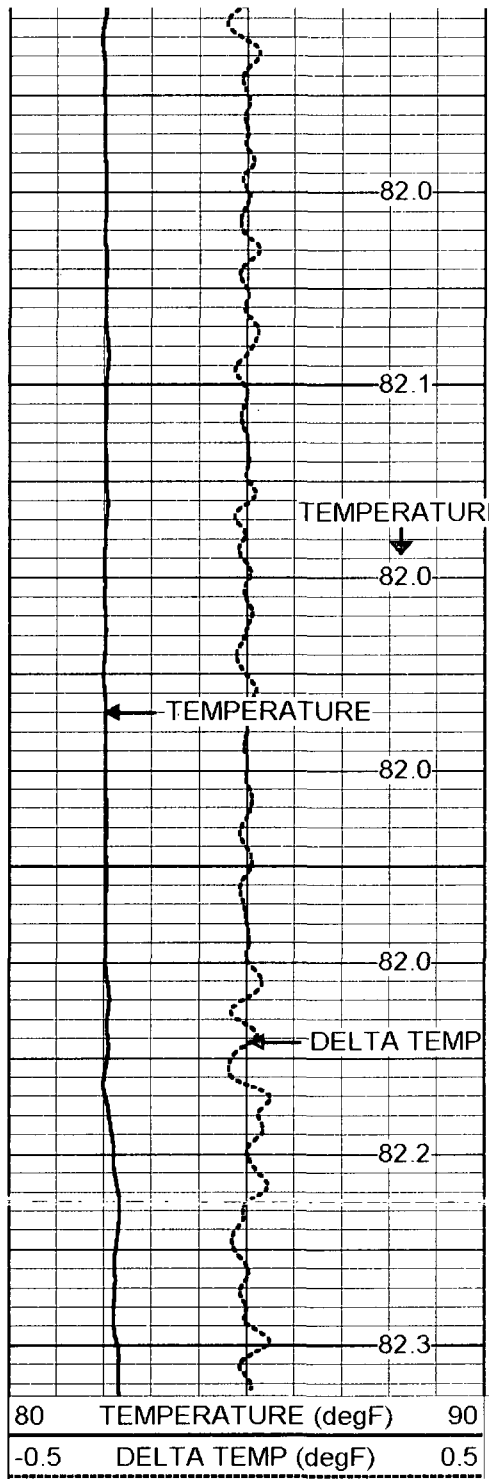
300

<- CSG ->

400







TEMP 0.10 ft



TEMP-COLOG (MV01FRT) 10.00 lb 2.00 in OD 0.10 ft

Dataset:	run2/pass1
Total Length:	4.10 ft
Total Weight:	20.00 lb
O.D.	2.00 in

