



**FLUID RESISTIVITY
TEMPERATURE
LOG**

Company		Diversified Drilling Corporation	
Well		ASR No. 2	
Field		Punta Gorda	
County		Charlotte	
State/Prv		Florida	
Location	City of Punta Gorda Water Treatment Plant		Other Services XY/GR, DIL/SP BHCVDL FLOW
Permanent Datum	G.L.	Elevation	Elevation
Log Measured From	G.L.		K.B. D.F. G.L.
Drilling Measured From	G.L.		
Date	12-NOV-2001		
Run Number	TWO		
Depth Driller	800'		
Depth Logger	801'		
Bottom Logged Interval	801'		
Top Log Interval	SURFACE		
Open Hole Size	7.875"		
Type Fluid	WATER		
Density / Viscosity	NANA		
Max. Recorded Temp.	see FRT log		
Estimated Cement Top	NA		
Time Well Ready	08:30 11/12/01		
Time Logger on Bottom	08:30 11/12/01		
Equipment Number	MVGS-1		
Location	Ft. Myers		
Recorded By	S. MILLER		
Witnessed By	P. D'Amo (MMWH)		
Borehole Record		Tubing Record	
Run Number	Bit	From	To
ONE	7.875"	120'	351'
TWO	7.875"	345'	800'
Casing Record	Size	Wd/Ft	Top
Surface String	32"	0.375" WT	SURFACE
Prot. String	26"	0.375" WT	SURFACE
Production String			
Liner			
Invoice No.	2001180	P.O. #. 14531	Job No.: 6022
			* FINAL PRINT *

<<< Fold Here >>>

All interpretations are opinions based on inferences from electrical or other measurements and we cannot and do not guarantee the accuracy or correctness of any interpretation, and we shall not, except in the case of gross or willful negligence on our part, be liable or responsible for any loss, costs, damages, or expenses incurred or sustained by anyone resulting from any interpretation made by any of our officers, agents or employees. These interpretations are also subject to our general terms and conditions set out in our current Price Schedule.

Comments

STATIC (since 16:00, 11/7/01) and DYNAMIC down passes performed.
Rm=3.846 ohm-m @ 77.9 degF (DYNAMIC). Q=645 gpm.

FLUID RESISTIVITY CALIBRATION REPORT

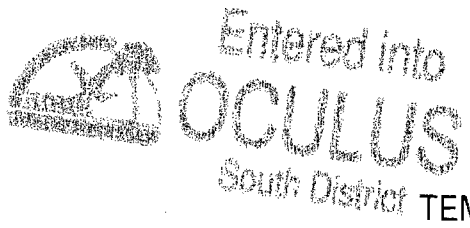
(Performed: 27-OCT-01 14:15)

OHM-M	CPS
0.951	1702.35
2.136	2265.54
5.112	4111.254

TEMPERATURE CALIBRATION REPORT

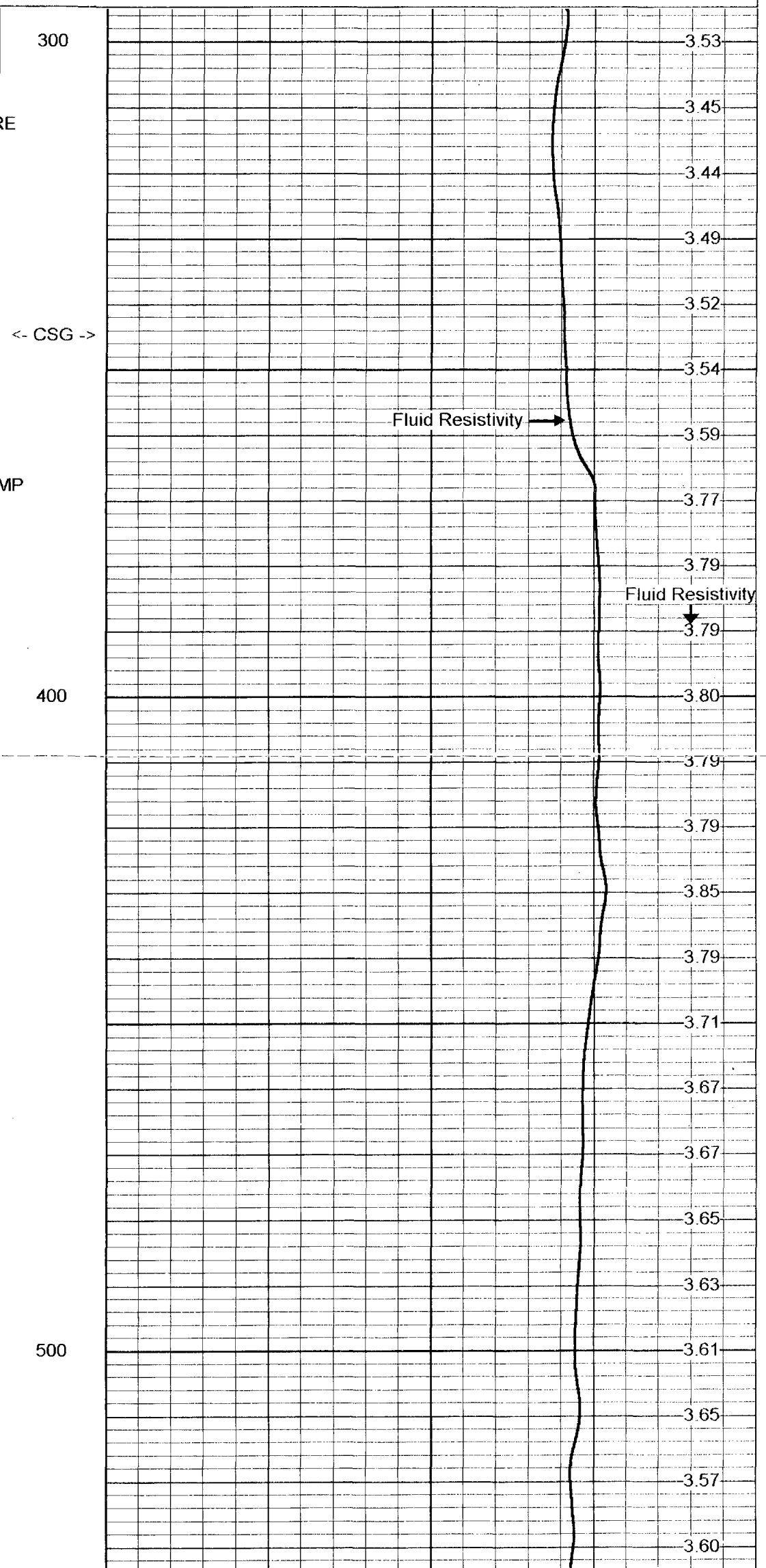
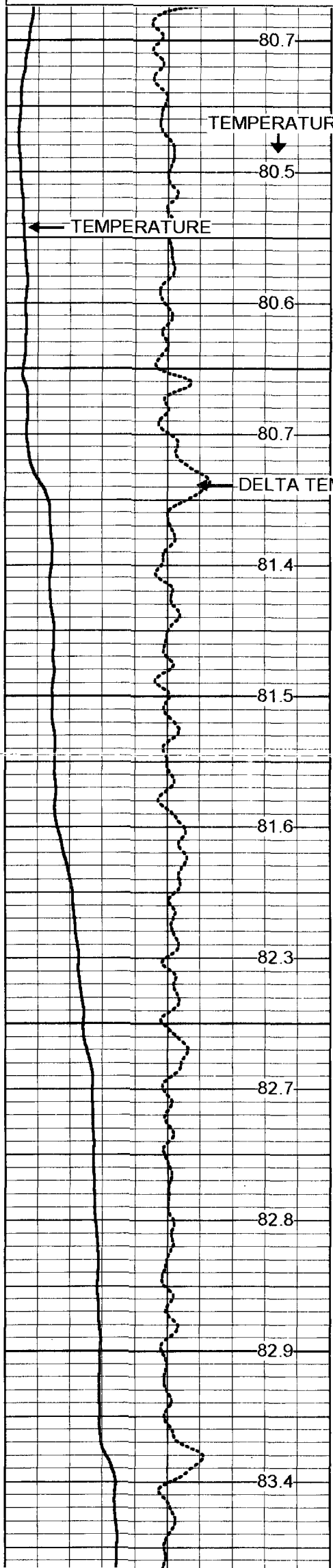
(performed: 27-OCT-01 16:45)

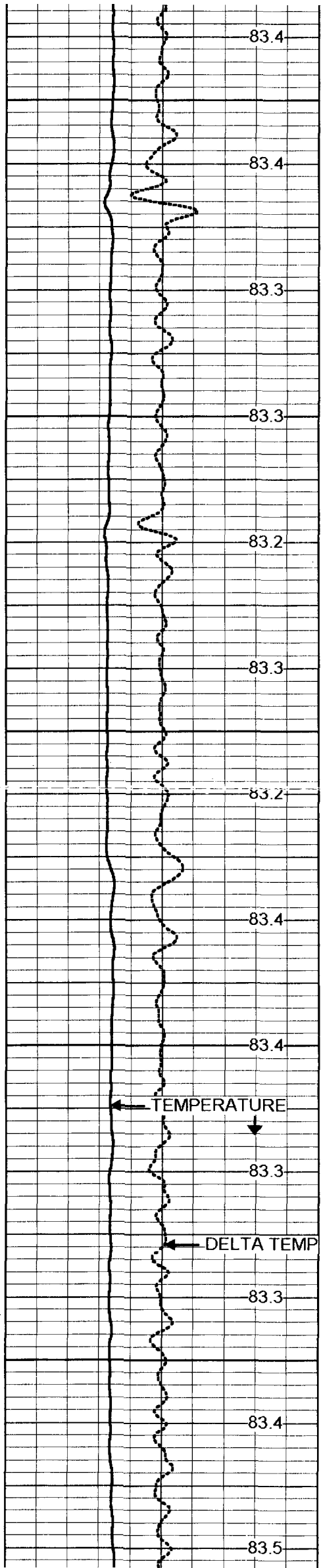
DEG-F	CPS
36.1	2172.13
151.8	5684.71



DYNAMIC DOWN

Database File: pgasr2.db
 Dataset Pathname: run2/DFRT
 Presentation Format: frtpg2.prs
 Dataset Creation: Mon Nov 12 18:22:26 2001
 Charted by: Depth in Feet scaled 1:240





600

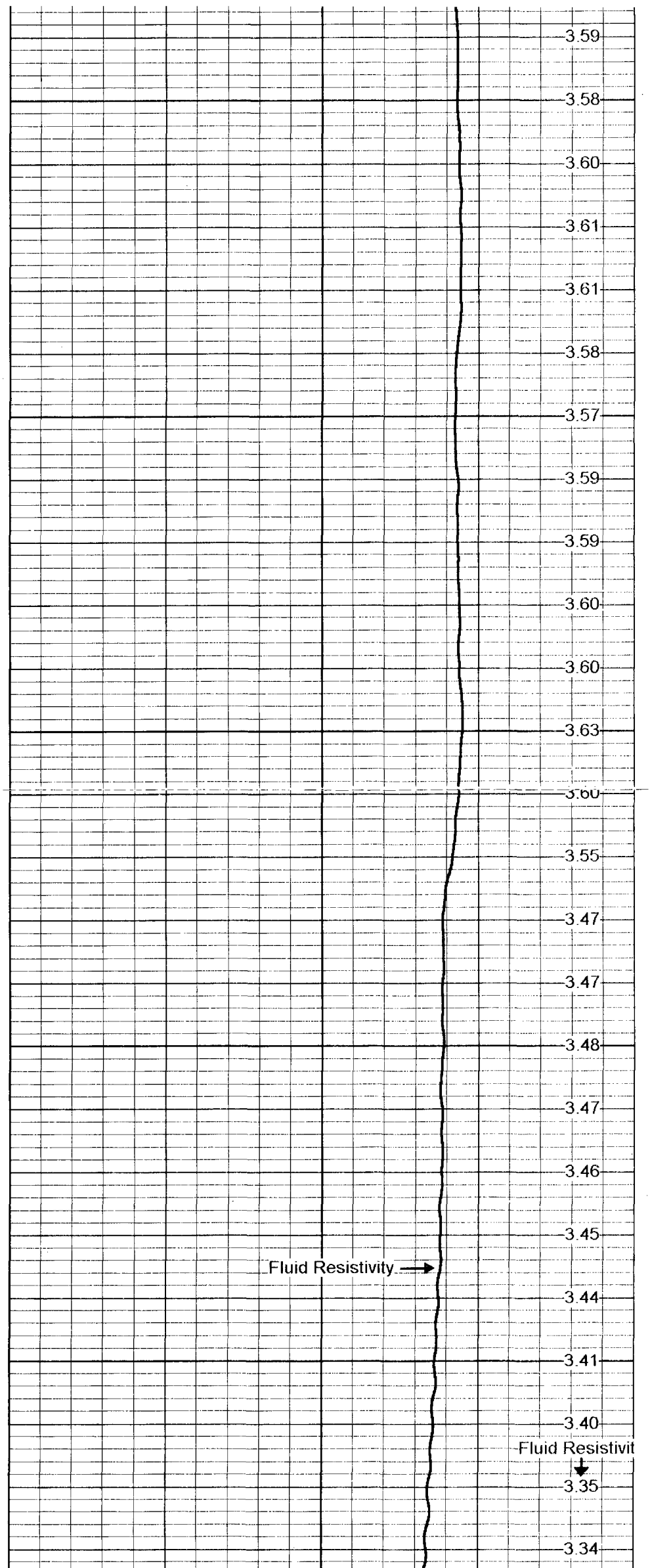
700

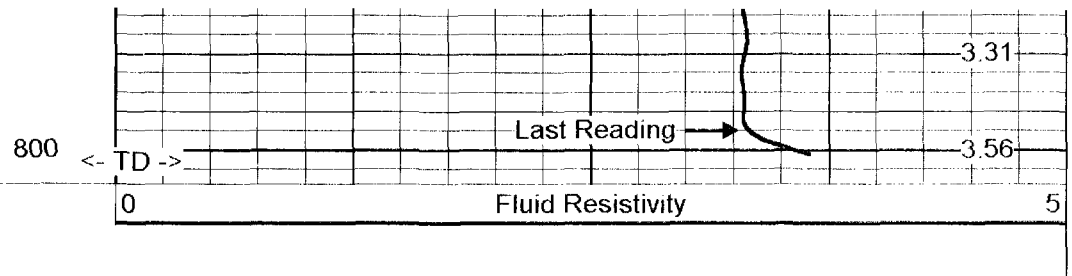
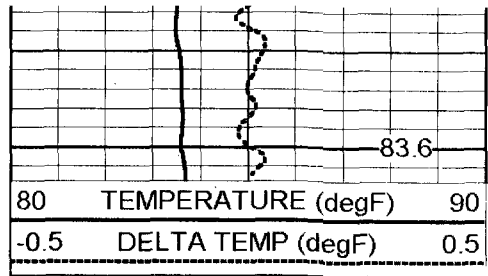
TEMPERATURE

DELTA TEMP

Fluid Resistivity

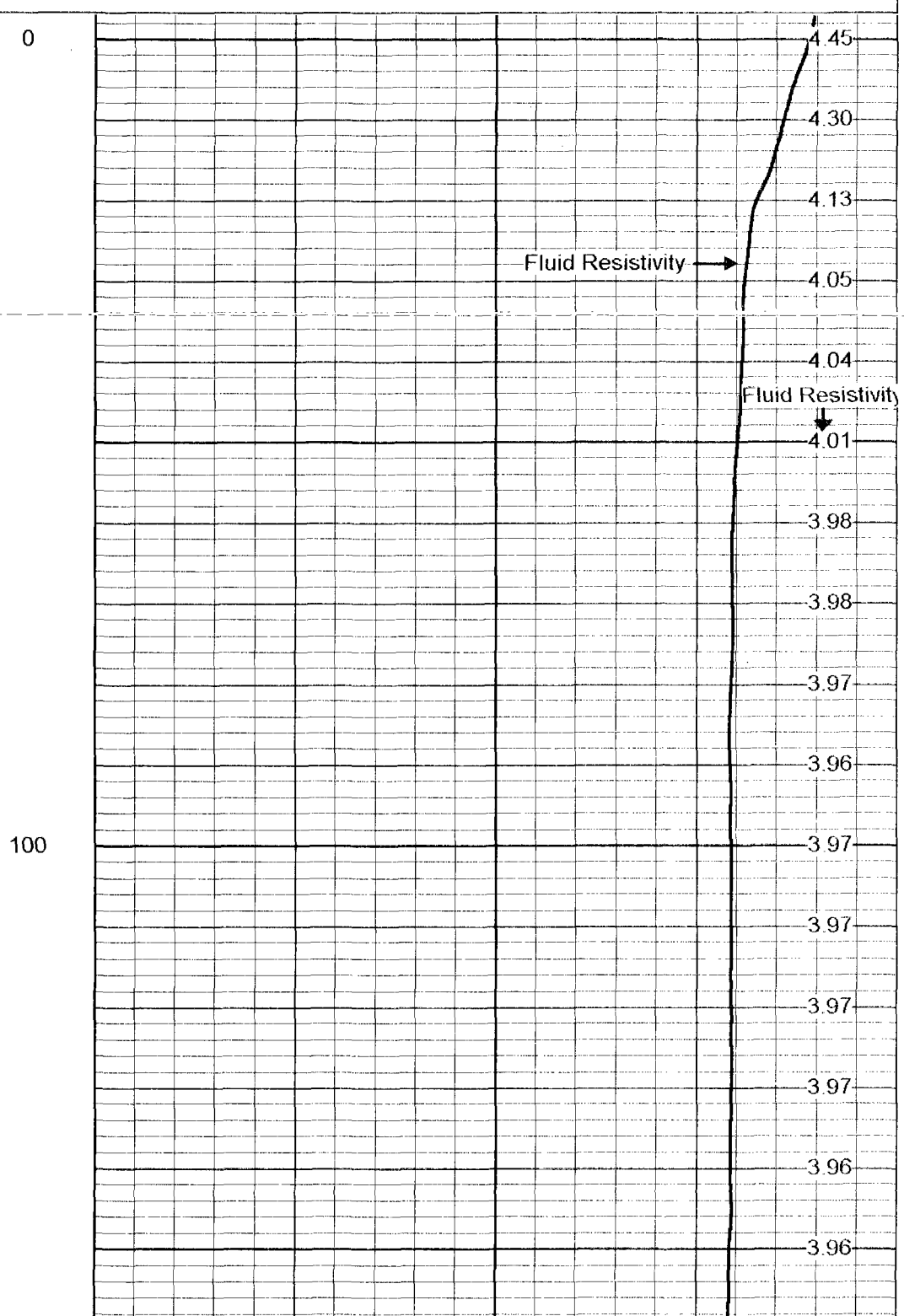
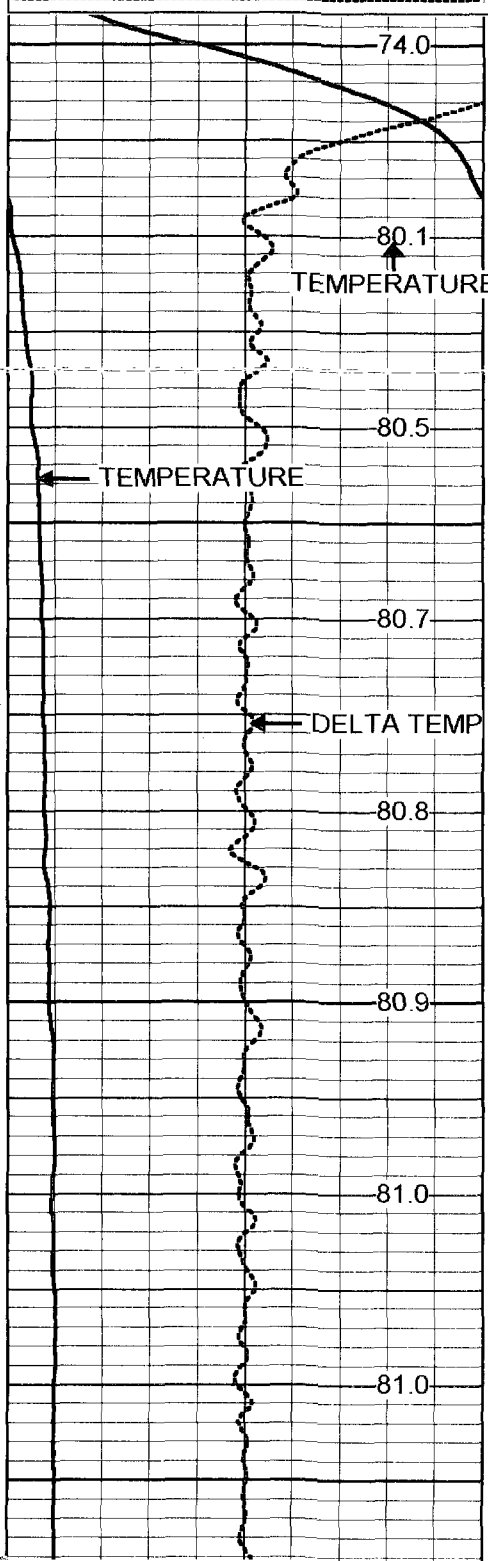
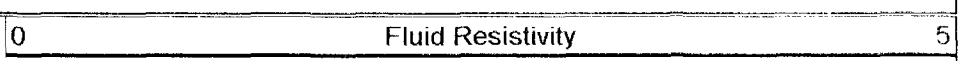
Fluid Resistivit

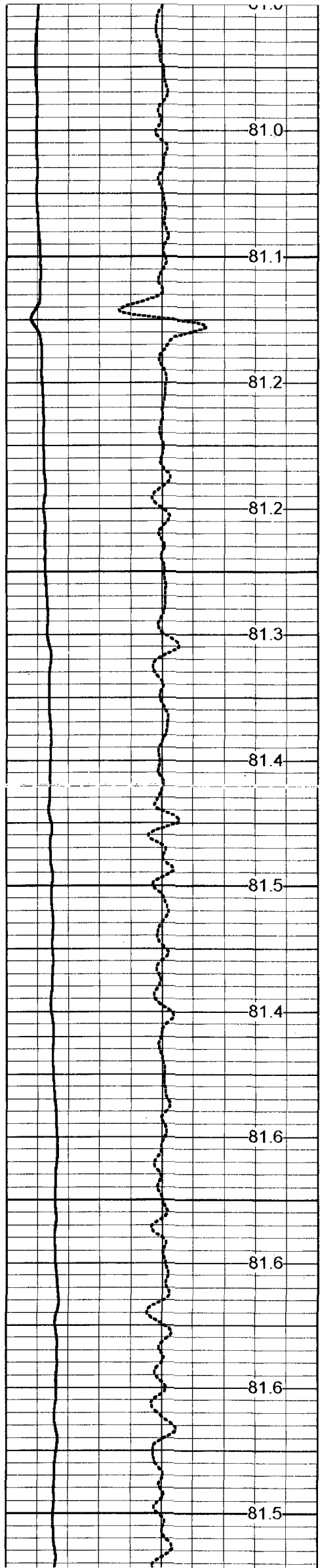




STATIC DOWN

Database File: pgasr2.db
 Dataset Pathname: run2/SFRT
 Presentation Format: frtpg2.prs
 Dataset Creation: Mon Nov 12 18:23:27 2001
 Charted by: Depth in Feet scaled 1:240



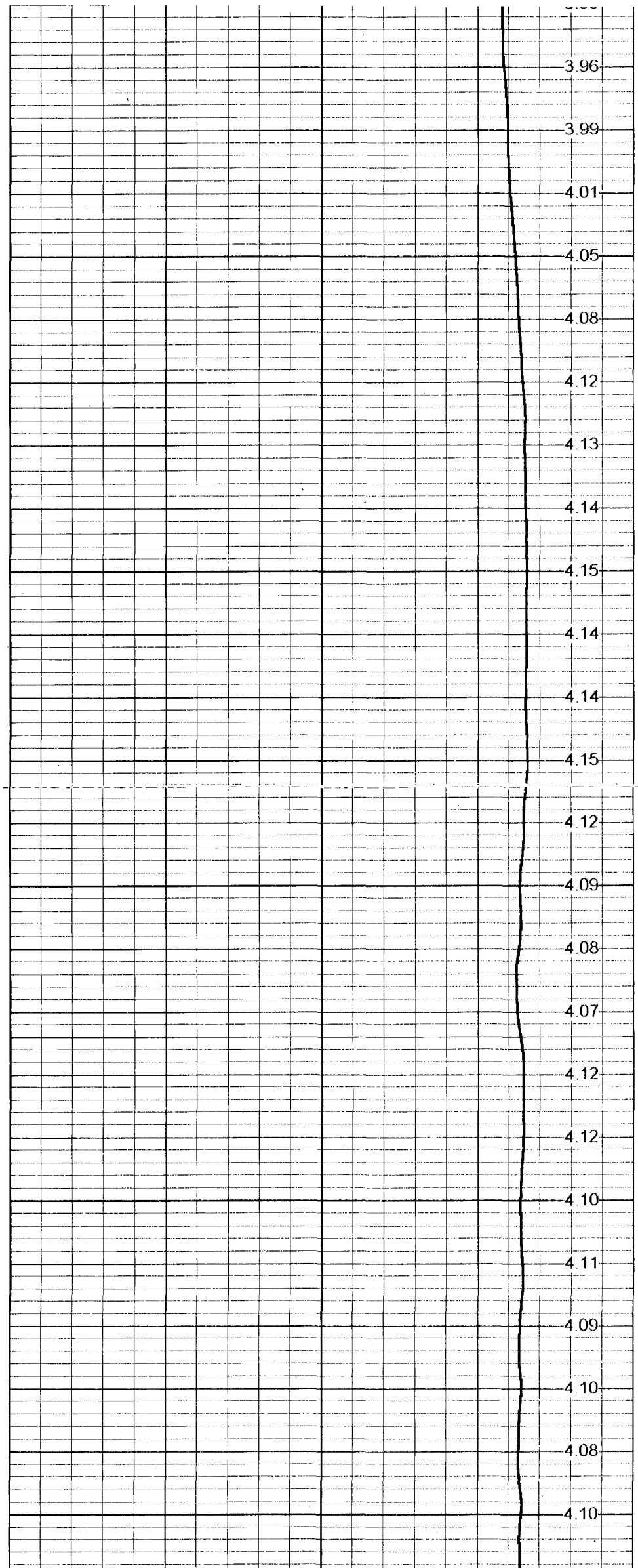


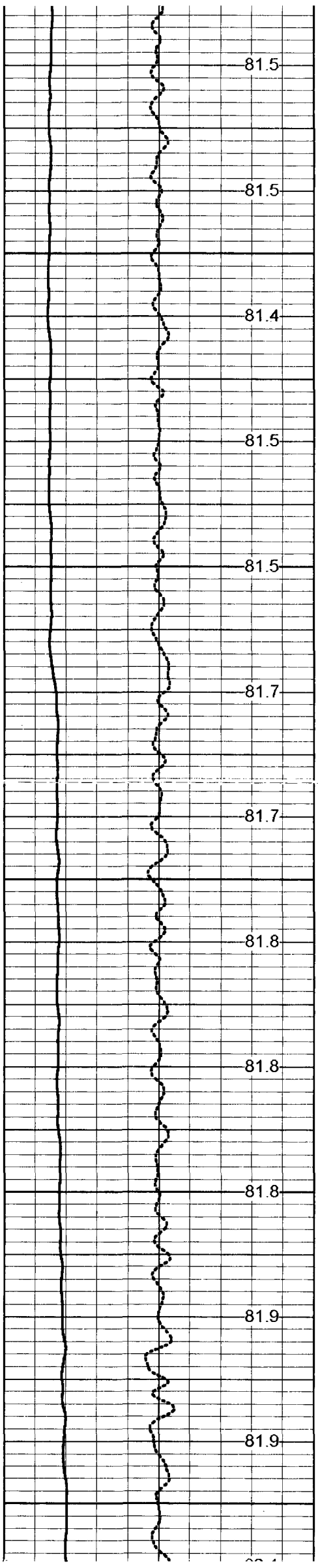
200

300

<- CSG ->

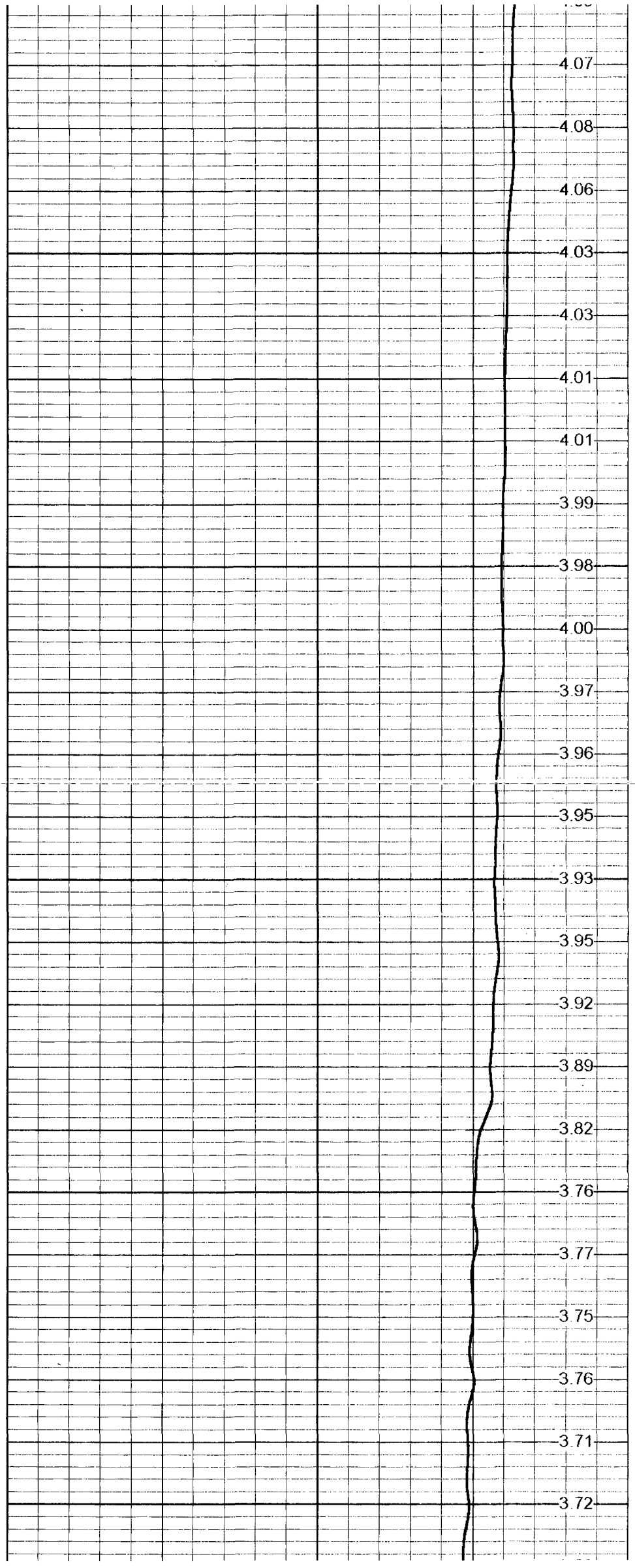
400

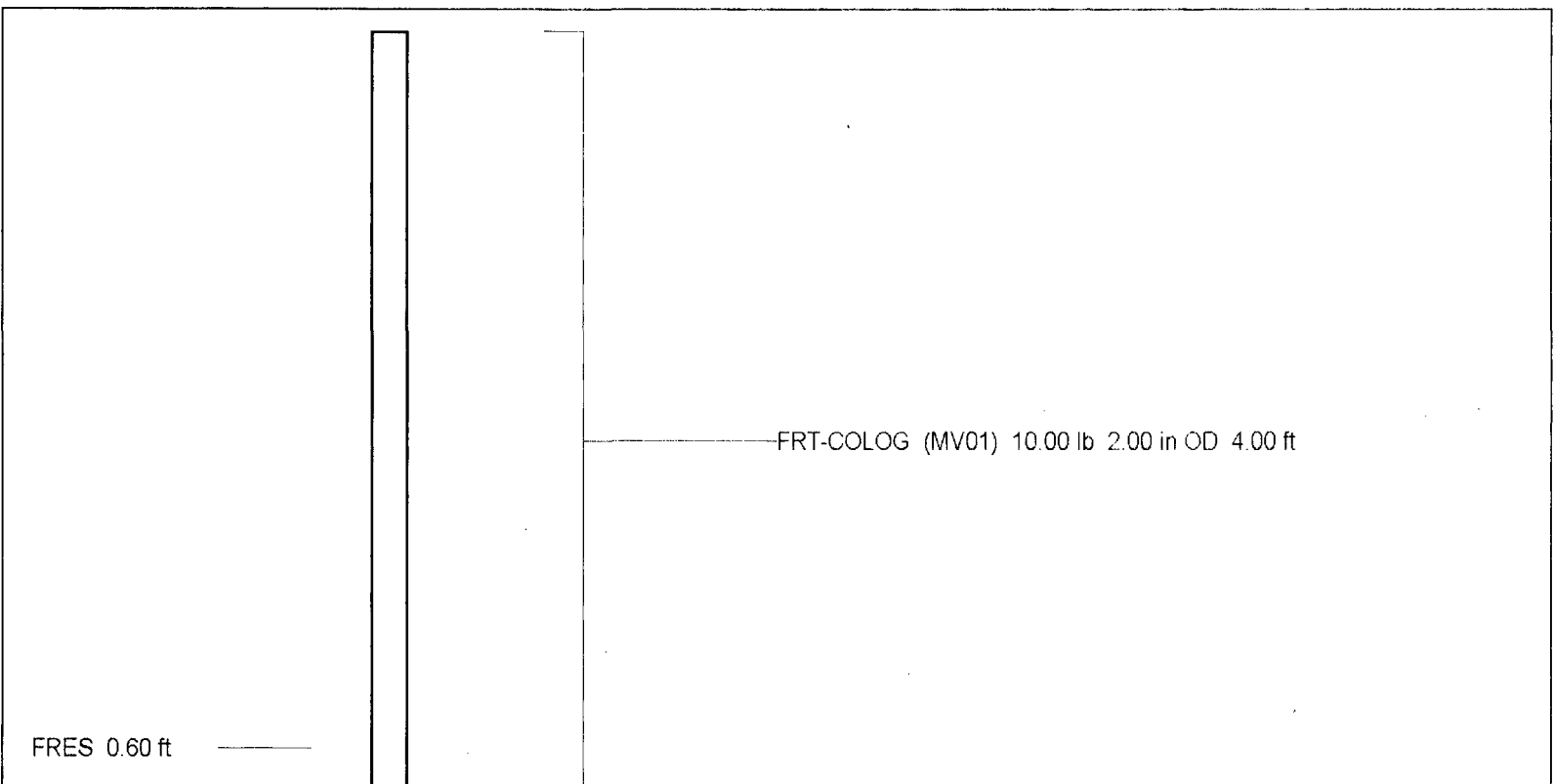
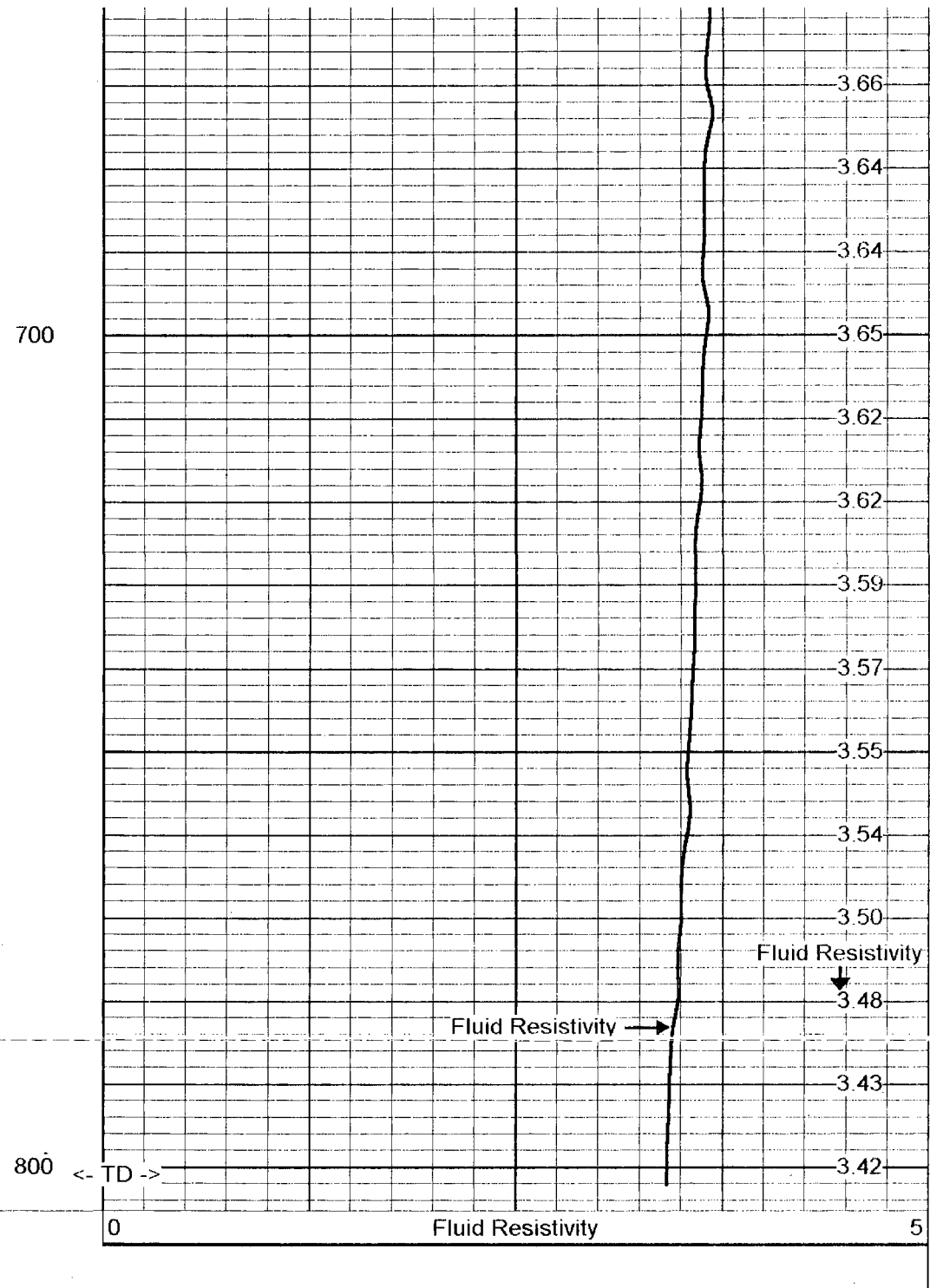
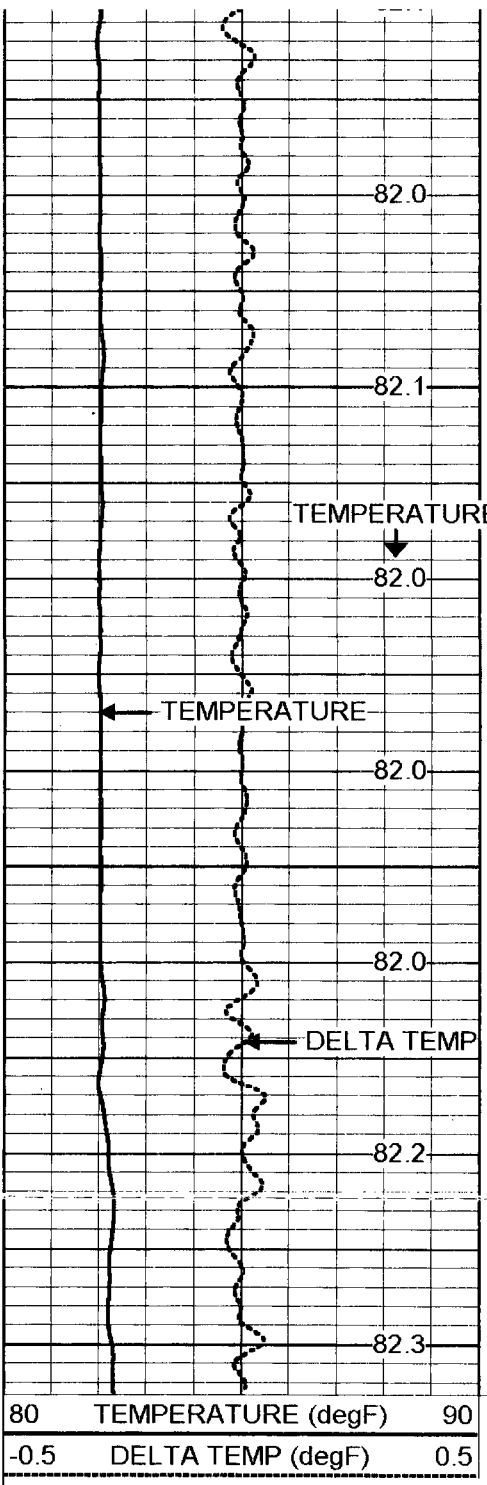




500

600





TEMP 0.10 ft



TEMP-COLOG (MV01FRT) 10.00 lb 2.00 in OD 0.10 ft

Dataset:	run2/pass1
Total Length:	4.10 ft
Total Weight:	20.00 lb
O.D.	2.00 in