



FLUID RESISTIVITY TEMPERATURE LOG

Company		Diversified Drilling Corporation	
Well		ASR No. 2	
Field		Punta Gorda	
County		Charlotte	
State/Prv		Florida	
Location		City of Punta Gorda Water Treatment Plant	
Permanent Datum		G.L.	Elevation
Log Measured From		G.L.	K B
Drilling Measured From		G.L.	D.F.
			G.L.
Date	8-FEB-2002		
Run Number	FIVE		
Depth Driller	998'		
Depth Logger	998'		
Bottom Logged Interval	998'		
Top Log Interval	745'		
Open Hole Size	15"		
Type Fluid	WATER		
Density / Viscosity	NANA		
Max. Recorded Temp.	degF		
Estimated Cement Top	SURFACE		
Time Well Ready	10:00 2/8/02		
Time Logger on Bottom	10:00 2/8/02		
Equipment Number	MVGS-1		
Location	Ft. Myers		
Recorded By	S. Miller		
Witnessed By	P. D'Amo (MMWH)		B Balmer (DDC)
Borehole Record		Tubing Record	
Run Number	Bit	From	To
ONE	7.875"	120'	351'
TWO	7.875"	345'	800'
THREE	25"	345'	785'
Casing Record	Size	Wgt/Ft	Top
Surface String	32"	0.375" WT	SURFACE
Prot. String	26"	0.375" WT	SURFACE
Production String	17.4" PVC	15.25" ID	SURFACE
Liner			780'
Invoice No.	2002035	P.O. #. 13830	Job No.: 6022
* FINAL PRINT *			

<<< Fold Here >>>

All interpretations are opinions based on inferences from electrical or other measurements and we cannot and do not guarantee the accuracy or correctness of any interpretation, and we shall not, except in the case of gross or willful negligence on our part, be liable or responsible for any loss, costs, damages, or expenses incurred or sustained by anyone resulting from any interpretation made by any of our officers, agents or employees. These interpretations are also subject to our general terms and conditions set out in our current Price Schedule.

Comments

A STATIC (since 14:30, 2/7/02) DOWN and a DYNAMIC DOWN pass were performed.
Rw=3.247 ohm-m @ 84.5 degF (DYNAMIC). Q=714 gpm.

FLUID RESISTIVITY CALIBRATION REPORT

(Performed: 12-JAN-01 17:30)

OHM-M	CPS
2.575	2950.14
3.404	3185.45
4.829	2565.98

TEMPERATURE CALIBRATION REPORT

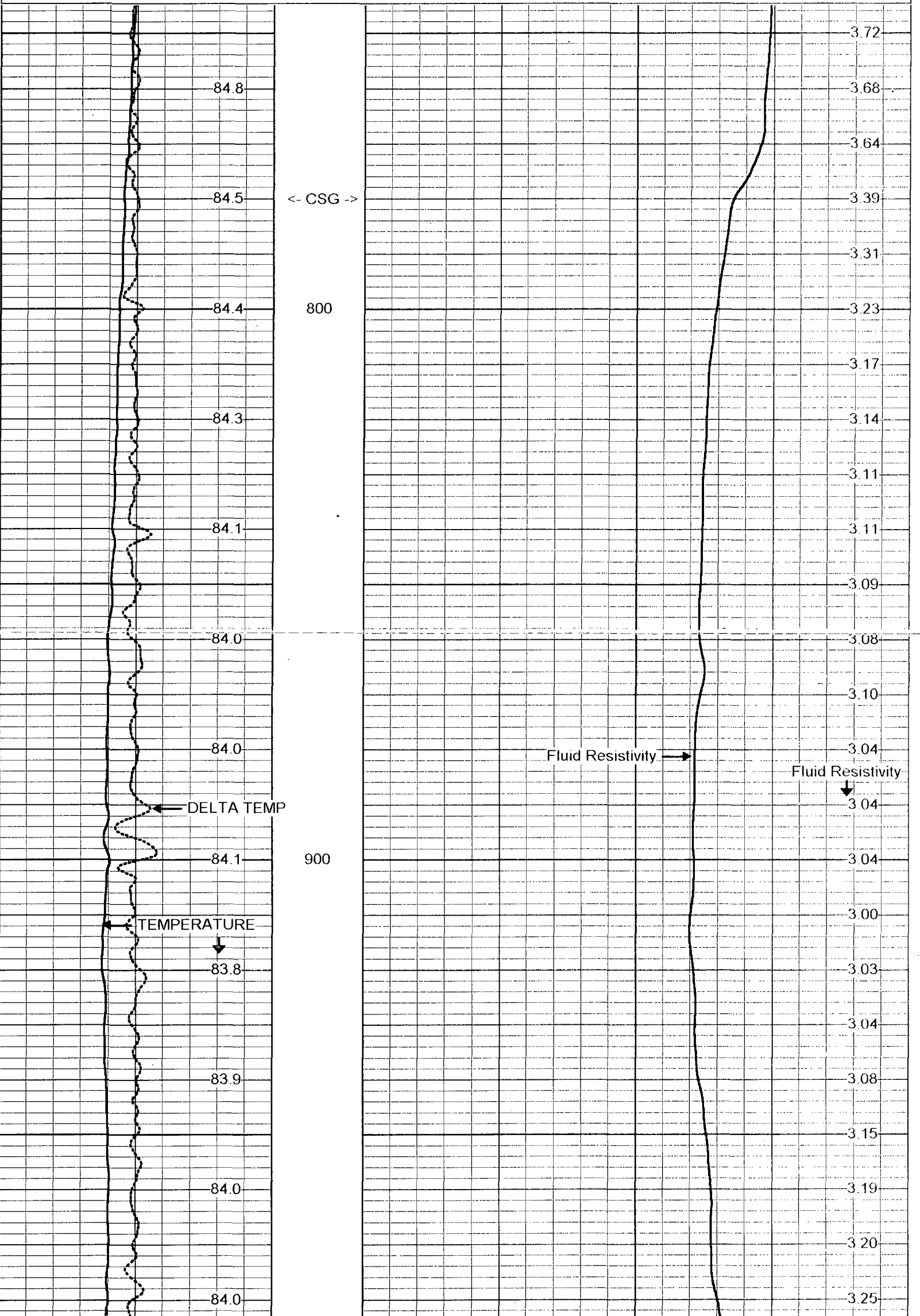
(Performed: 12-JAN-01 17:45)

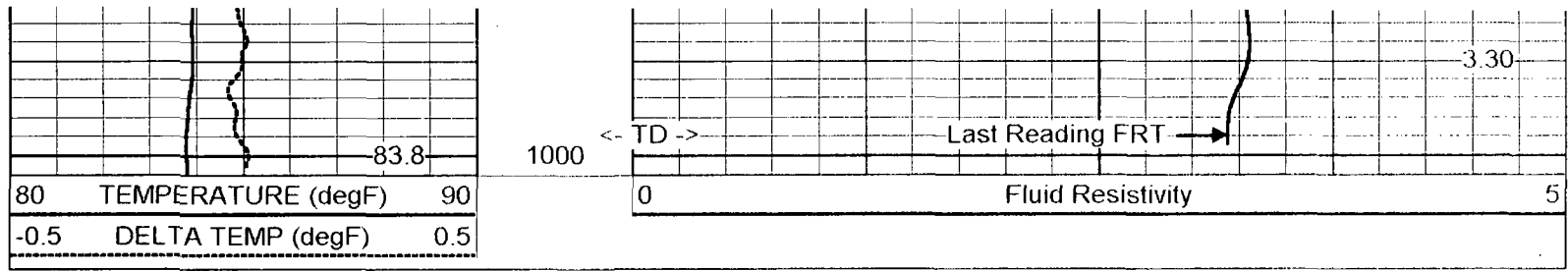
DEG-F	CPS
39.0	2515.12
105.6	5795.18



DYNAMIC FRT DOWN

Database File: pgasr2.db
 Dataset Pathname: run5/DFRT
 Presentation Format: frtpg2.prs
 Dataset Creation: Fri Feb 08 19:12:05 2002
 Charted by: Depth in Feet scaled 1:240





STATIC FRT DOWN

Database File: pgasr2.db
 Dataset Pathname: run5/SFRT
 Presentation Format: frtpg2.prs
 Dataset Creation: Fri Feb 08 19:12:54 2002
 Charted by: Depth in Feet scaled 1:240

