

Schlumberger

TEMPERATURE LOG

| | | | | | | | |
|------------------------|--|-------------------------|--|-------------------|--|-------------------------|--|
| COUNTY | | LEE | | COMPANY | | DRILLERS INC. | |
| FIELD | | N. FT. MYERS | | WELL | | N. FT. MYERS UTILITY IW | |
| LOCATION | | N. FT. MYERS UTILITY IW | | COMPANY | | DRILLERS INC. | |
| PERMANENT DATUM | | PAD LEVEL | | Elev. | | Elev. K.B. | |
| LOG MEASURED FROM | | PAD LEVEL | | above Perm. Datum | | D.F. | |
| DRILLING MEASURED FROM | | PAD LEVEL | | | | G.L. | |
| DATE | | 19-NOV-87 | | | | | |
| RUN NO. | | 5 | | | | | |
| DEPTH DRILLER | | 2340.0 F | | | | | |
| DEPTH LOGGER (80HL) | | 2279.0 F | | | | | |
| BITM. LOG INTERVAL | | 2279.0 F | | | | | |
| TOP LOG INTERVAL | | 40.0 F | | | | | |
| CASING-DRILLER | | 12.75 @ 2340.0 F | | 20 @ 1880.0 F | | | |
| CASING-LOGGER | | | | | | | |
| BIT SIZE | | 24 | | 30 | | | |
| TYPE FLUID IN HOLE | | FRESH WATER | | | | | |
| DENS. | | VISC. | | | | | |
| PH | | FID. LOSS | | | | | |
| SOURCE OF SAMPLE | | | | | | | |
| Rm @ Meas. Temp. | | | | | | | |
| Rm1 @ Meas. Temp. | | | | | | | |
| Rm2 @ Meas. Temp. | | | | | | | |
| SOURCE: Rm1 | | Rm2 | | | | | |
| Rm @ BHT | | | | | | | |
| CIRCULATION ENDED | | | | | | | |
| LOGGER ON BOTTOM | | 1300 | | | | | |
| MAX. REC. TEMP. | | | | | | | |
| EQUIP. | | 8193 | | FT MYERS | | | |
| RECORDED BY | | BUCHTEL | | | | | |
| WITNESSED BY | | PITT FRATARCANGELI | | | | | |

NOV 23 1987
 RECEIVED
 D.F.B. SW. FLA. DISTRICT

Other Services:
 CAL. VOL.
 HRT

FOLD HERE

The well name, location and borehole reference data were furnished by the customer.

All interpretations are opinions based on inferences from electrical or other measurements and we cannot, and do not guarantee the accuracy or correctness of any interpretations, and we shall not, except in the case of gross or willful negligence on our part, be liable or responsible for any loss, costs, damages or expenses incurred or sustained by anyone resulting from any interpretations made by any of our officers, agents or employees. These interpretations are also subject to Clause 4 of our General Terms and Conditions as set out in our current Price Schedule.

| | |
|----------------------|-------------|
| Run No. | 5 |
| Service Order No. | |
| Drilling Fluid Level | |
| Salinity | |
| Rm1 @ BHT | ⊗ |
| Rm2 @ BHT | ⊗ |
| Logging Speed | 3600.0 F/HR |
| Equipment Data | |
| Tool Number 1 | HTTB |
| Tool Number 2 | HTM 35 |
| Tool Number 3 | |
| Tool Number 4 | |
| Tool Number 5 | |
| Tool Number 6 | |
| Tool Number 7 | |
| Tool Number 8 | |
| Tool Number 9 | |
| Tool Number 10 | |
| Tool Number 11 | |
| Tool Number 12 | |

REMARKS:

THANK YOU FOR USING SCHLUMBERGER!!!

PARAMETERS

NAME VALUE UNIT
 BS 24.0000 IN

NAME VALUE UNIT
 BHS OPEN

SENSOR MEASURE POINT TO TOOL ZERO

TEMP 1.3 FEET
 CVEL 0.0 FEET
 EXP 0.0 FEET

CCL 6.3 FEET
 TENS 6.3 FEET

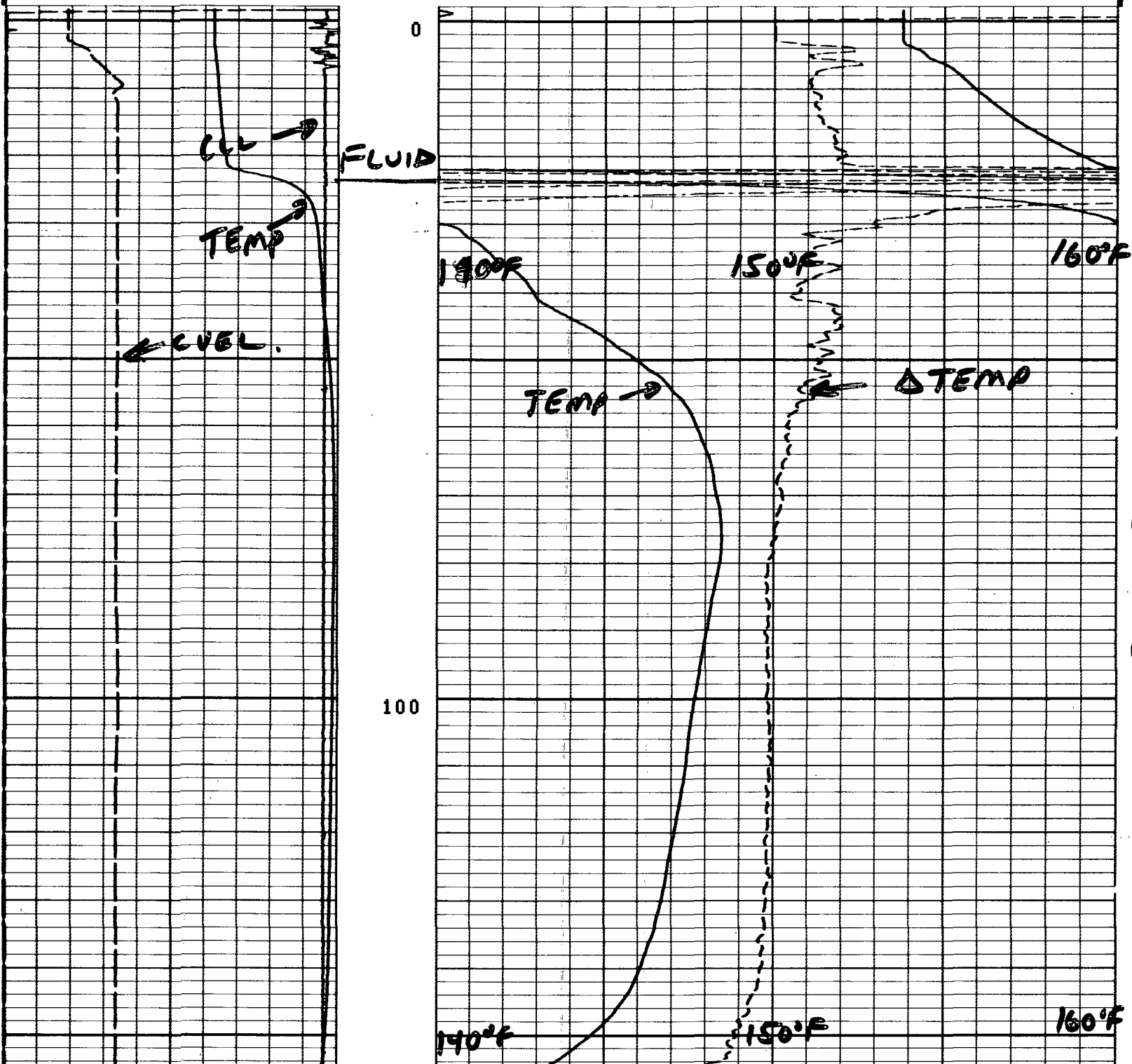
| | | | |
|--------|------------|--------|------------|
| 0.0 | -200.0 | -1.000 | 1.0000 |
| | CVEL(F/MN) | | DTEM(DF/F) |
| 0.0 | 200.00 | 80.000 | 100.00 |
| | CVEL(F/MN) | | TEMP(DEGF) |
| -19.00 | 1.0000 | | |
| | CCL | | |
| 0.0 | 150.00 | | |
| | TEMP(DEGF) | | |

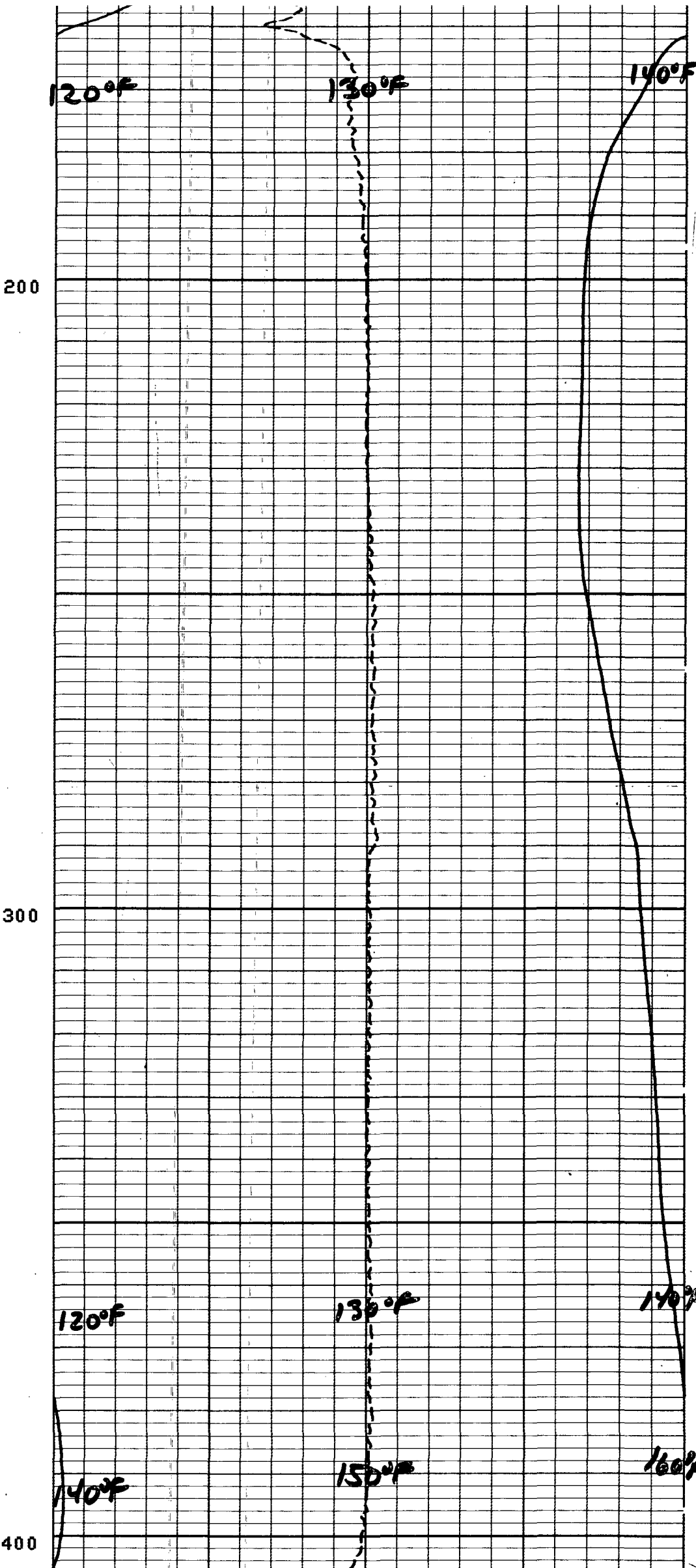
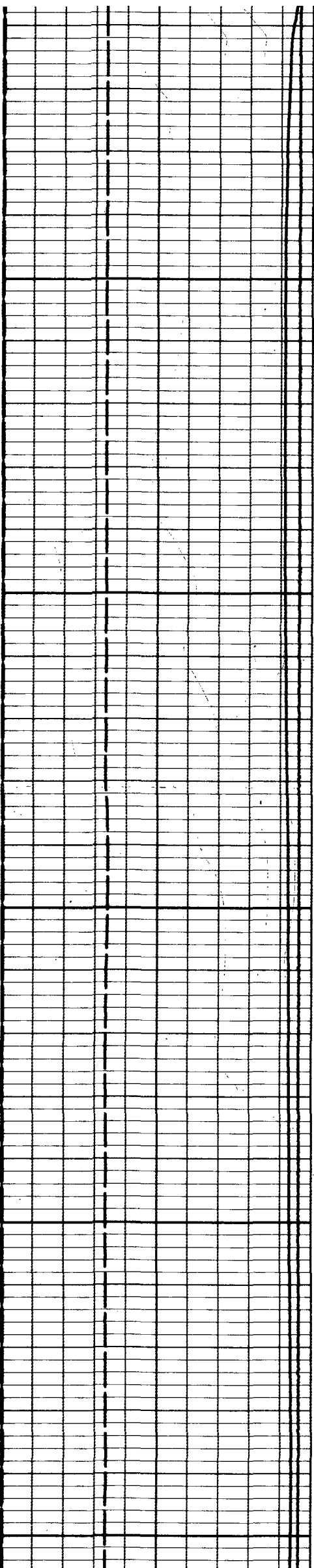
CP 27.772

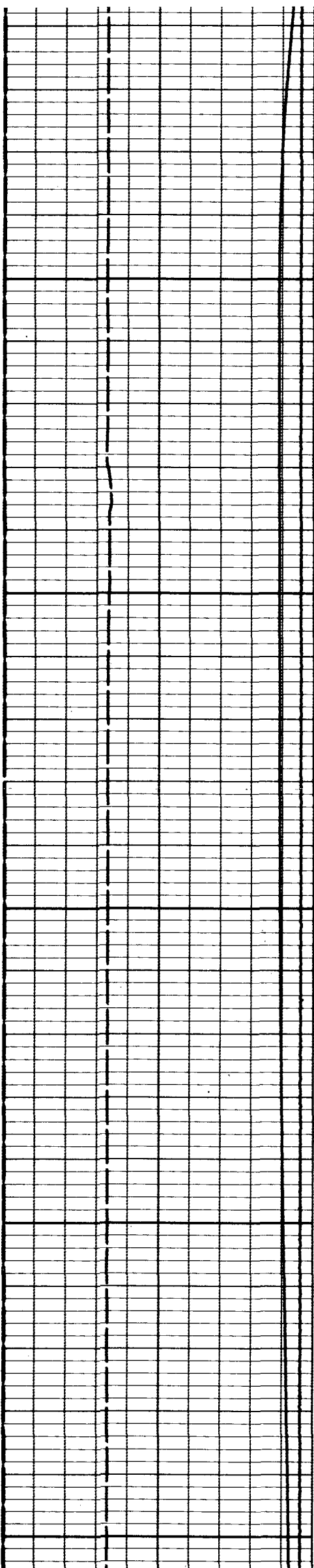
FILE

1

19-NOV-87 13:09







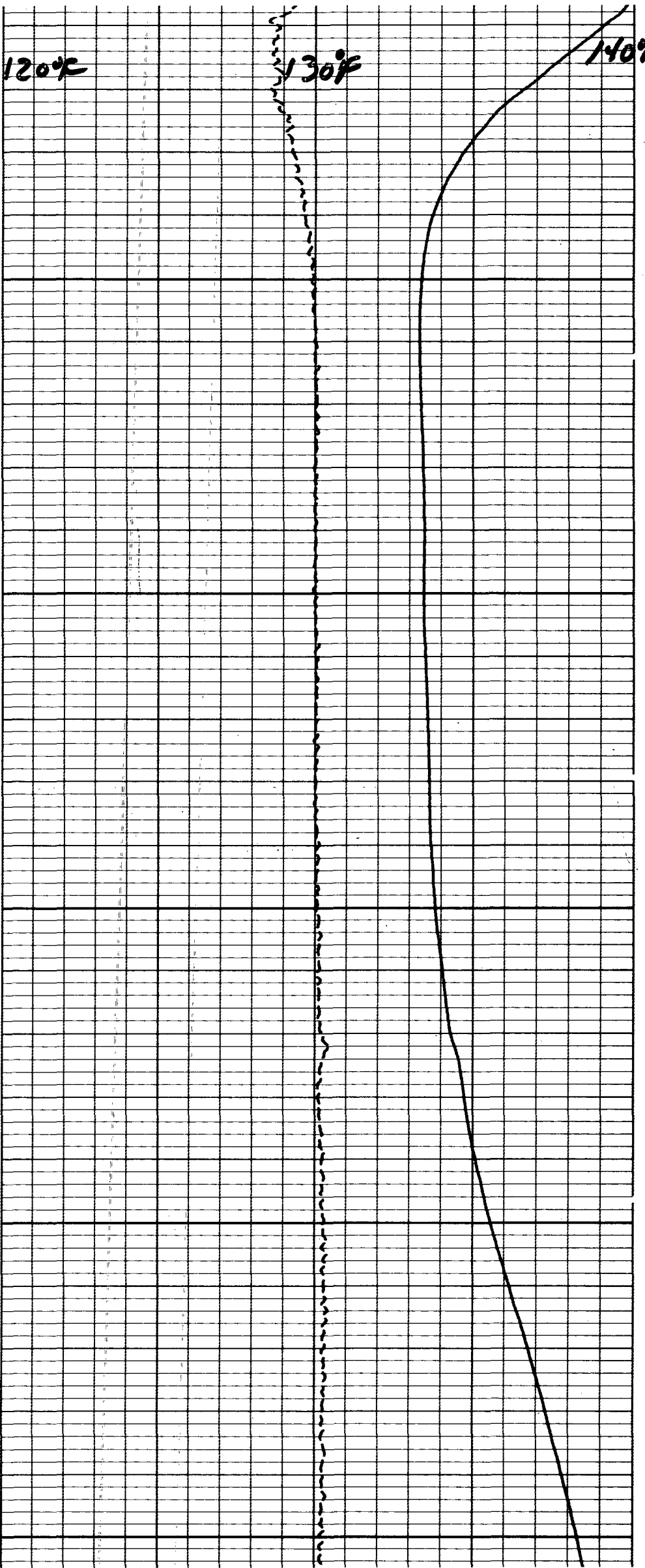
120°C

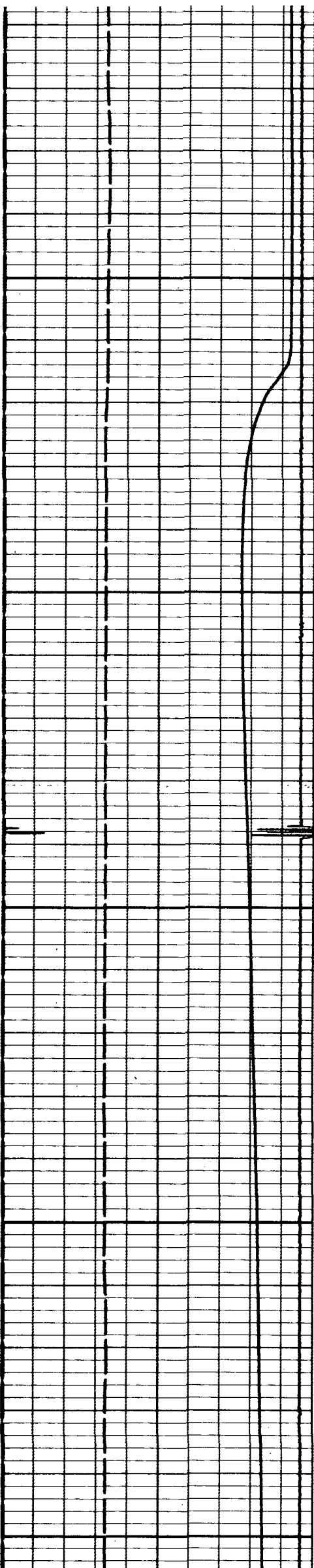
130°F

140°F

500

600





700

120°F

130°F

140°F

100°F

110°F

120°F

800

100°F

110°F

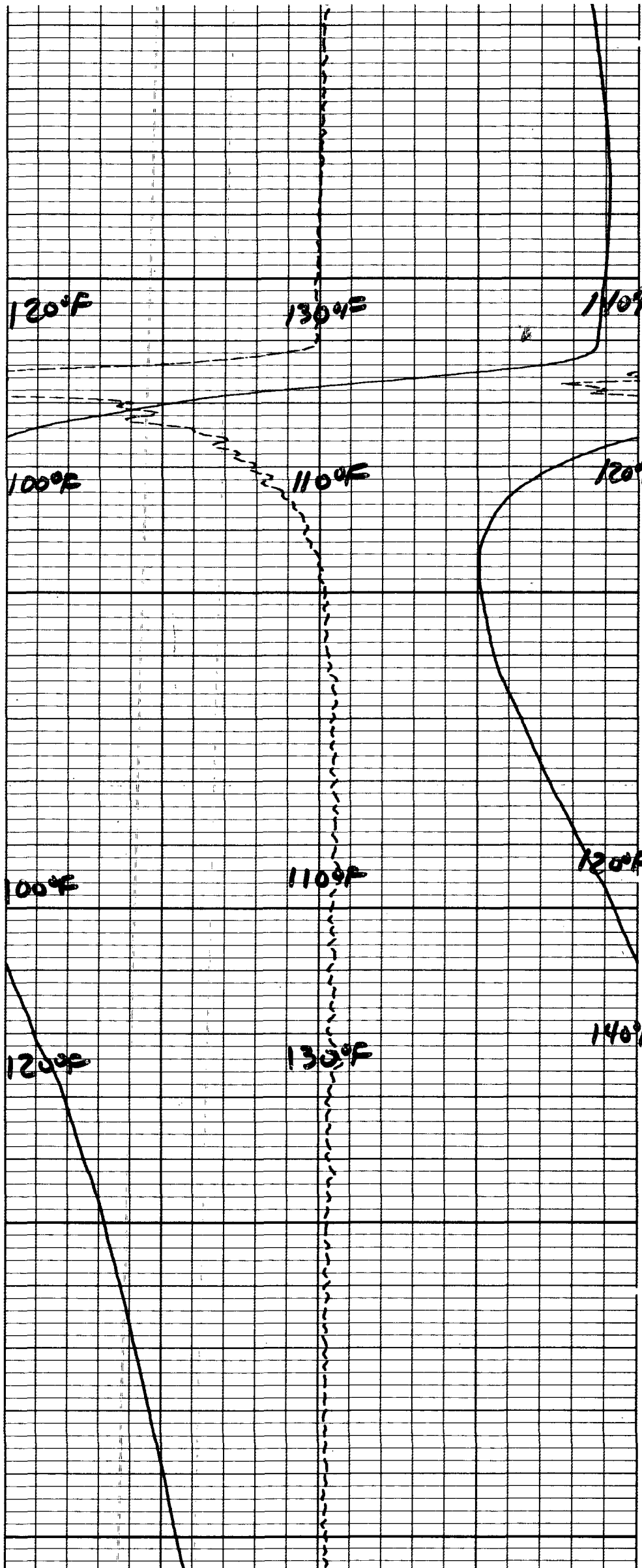
120°F

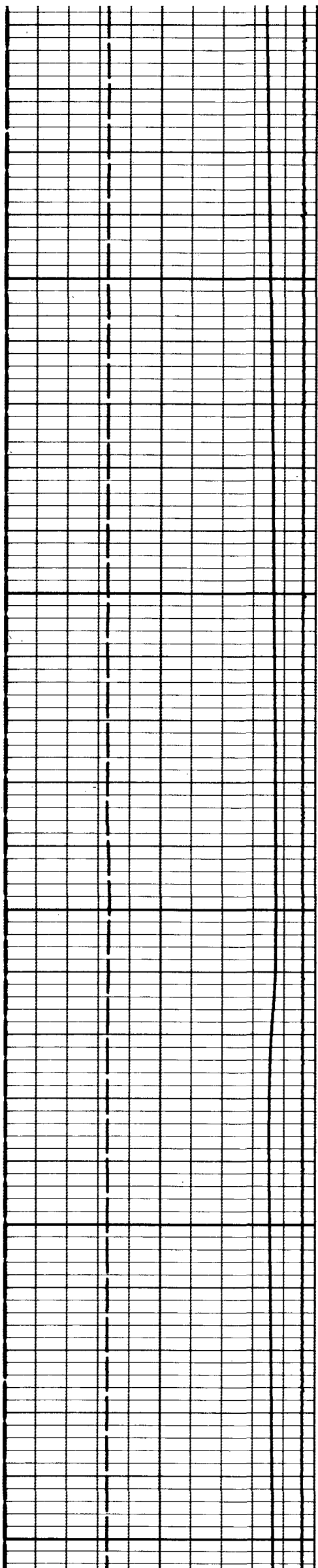
120°F

130°F

140°F

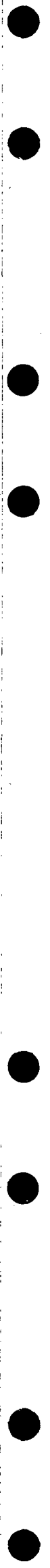
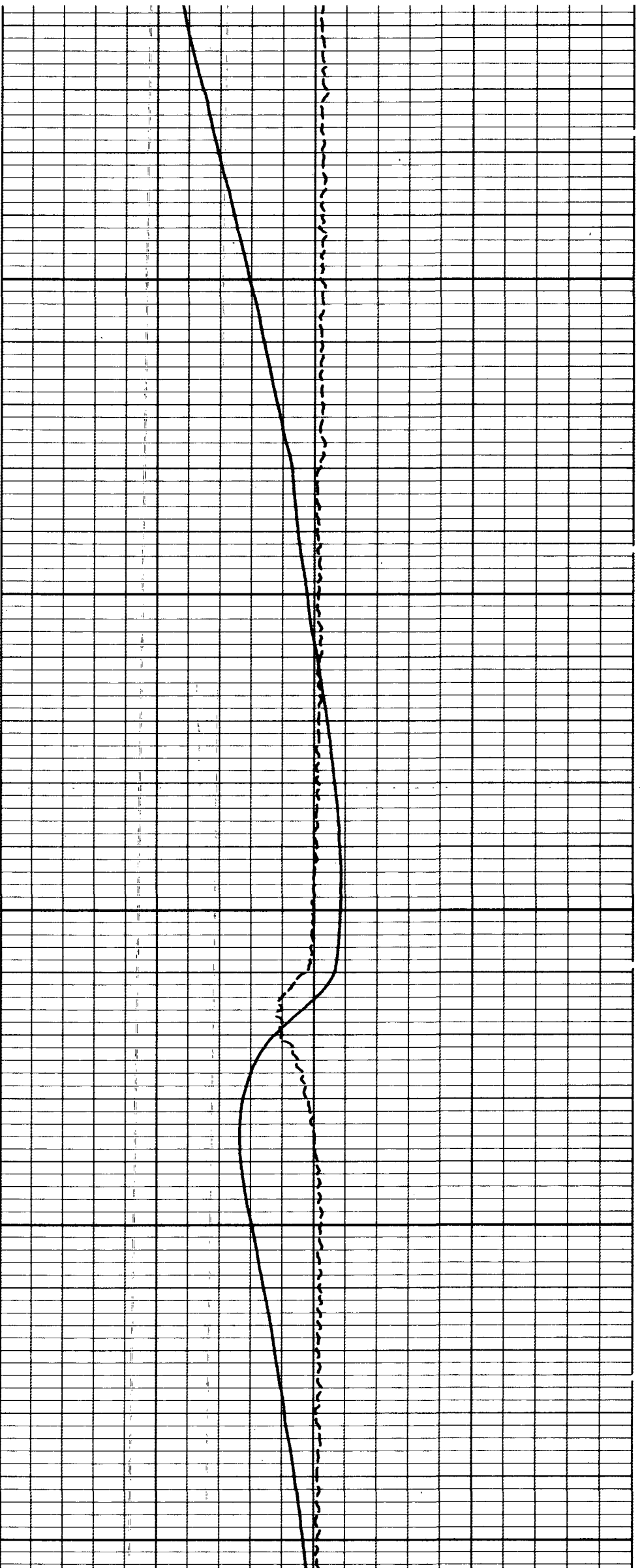
900





1000

1100



1200

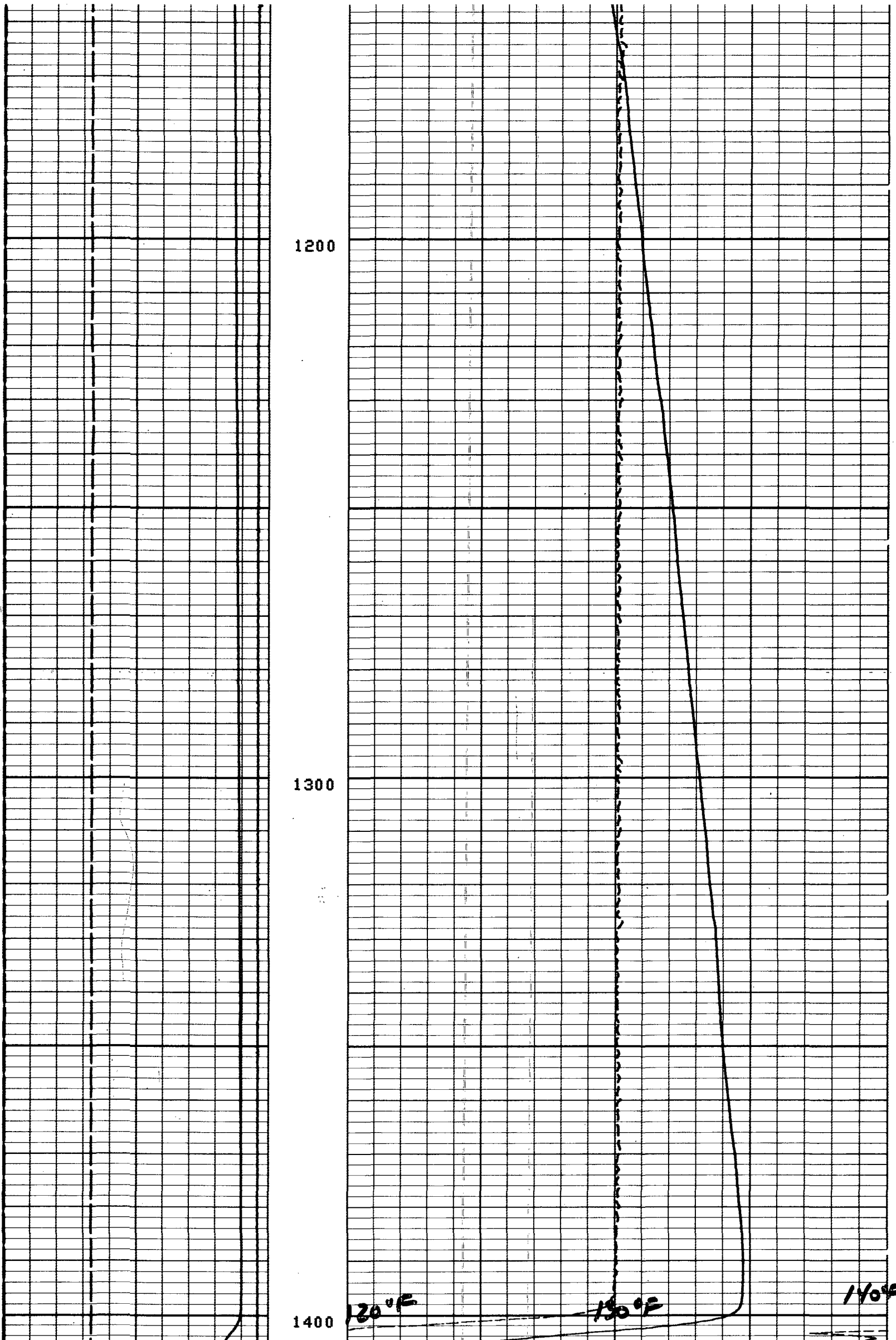
1300

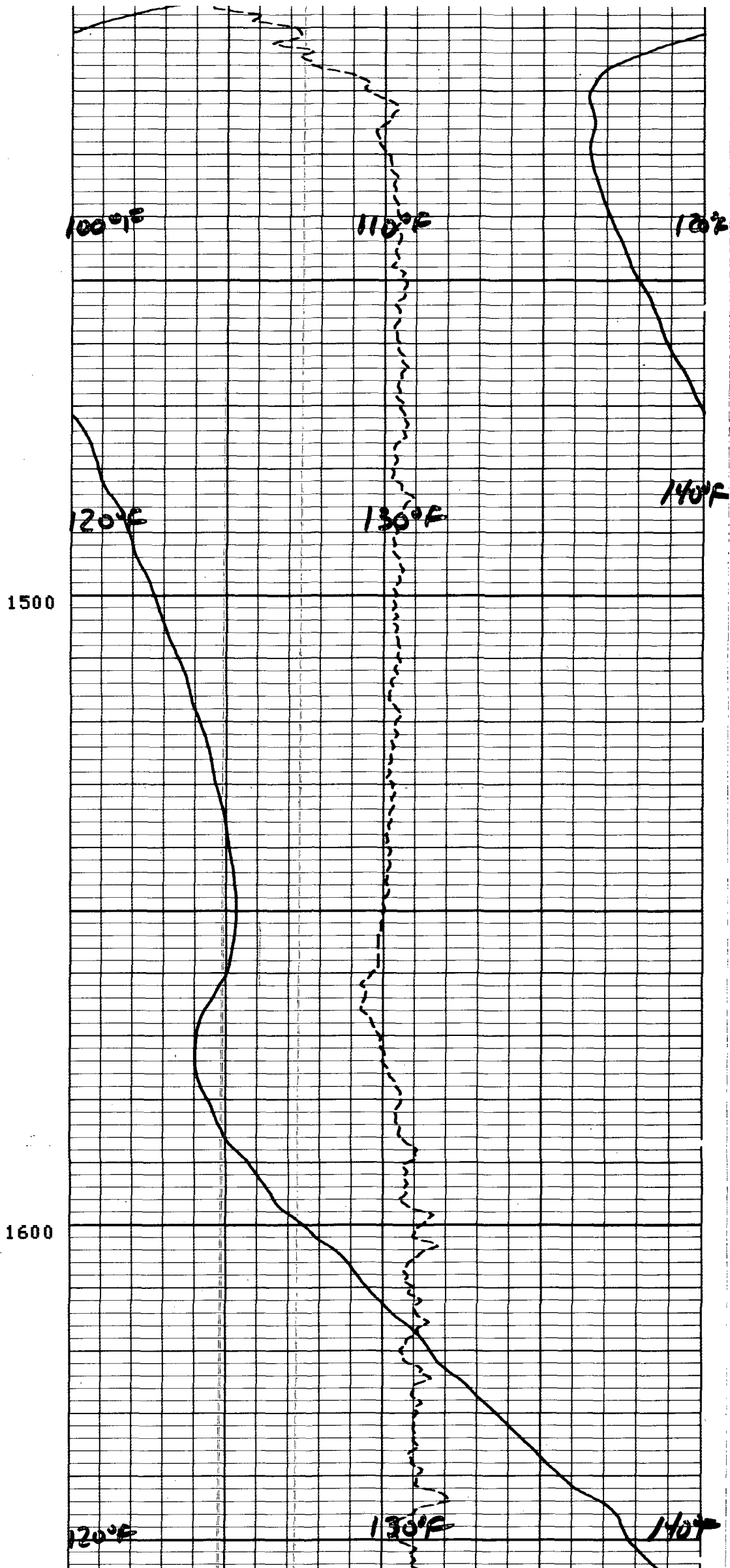
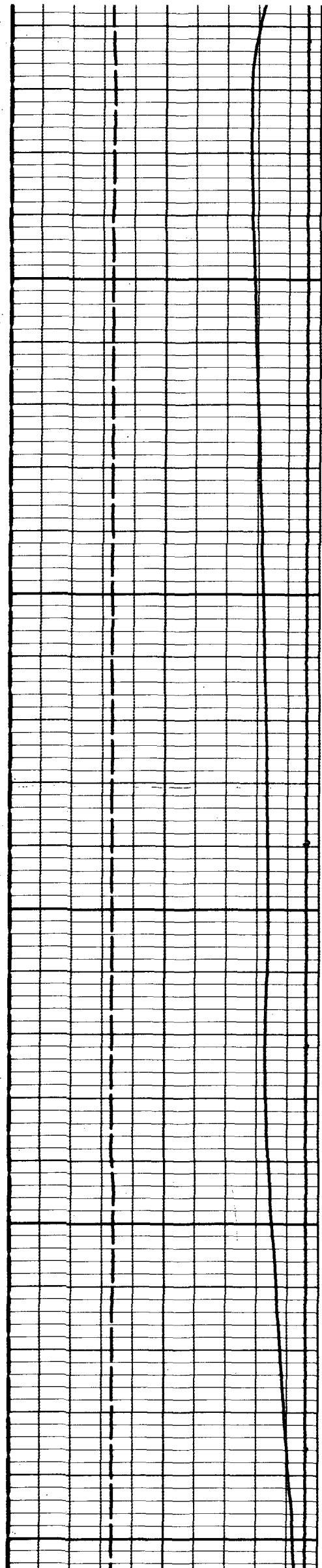
1400

120°F

130°F

140°F





1700

140°F

150°F

160°F

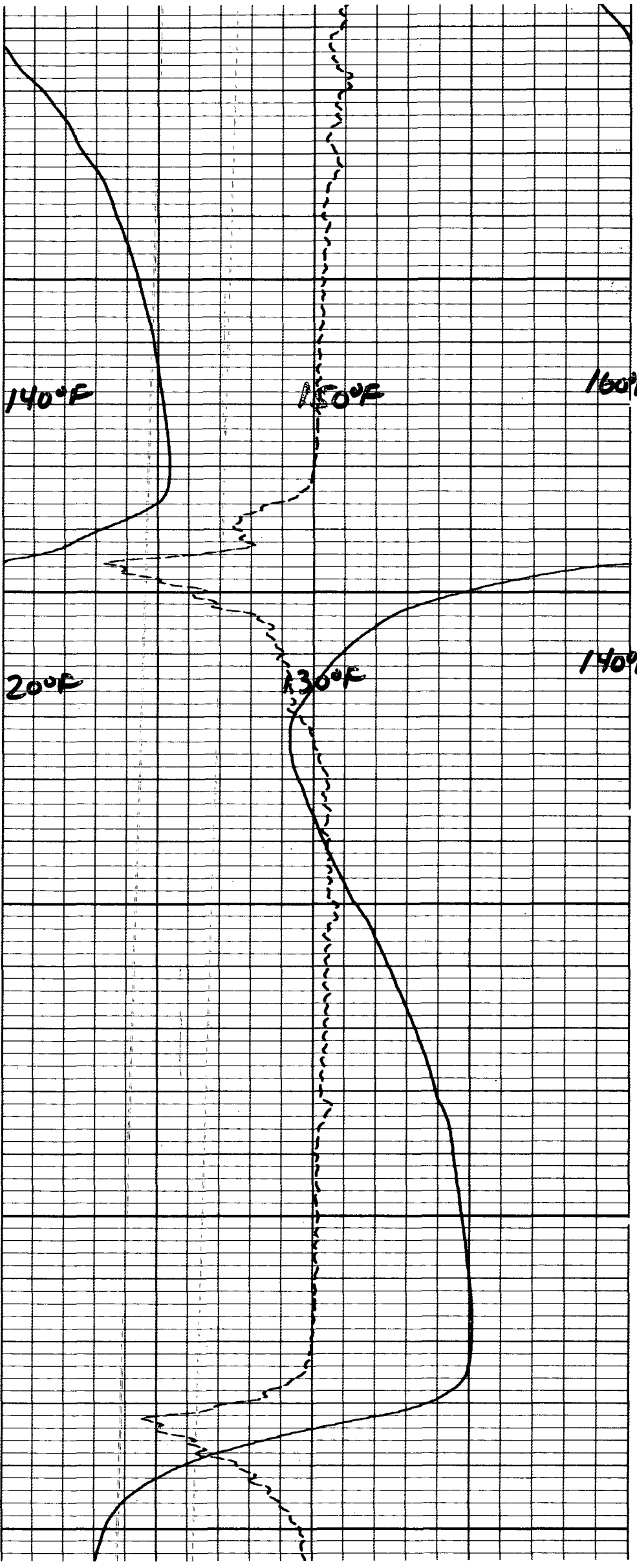
120°F

130°F

140°F

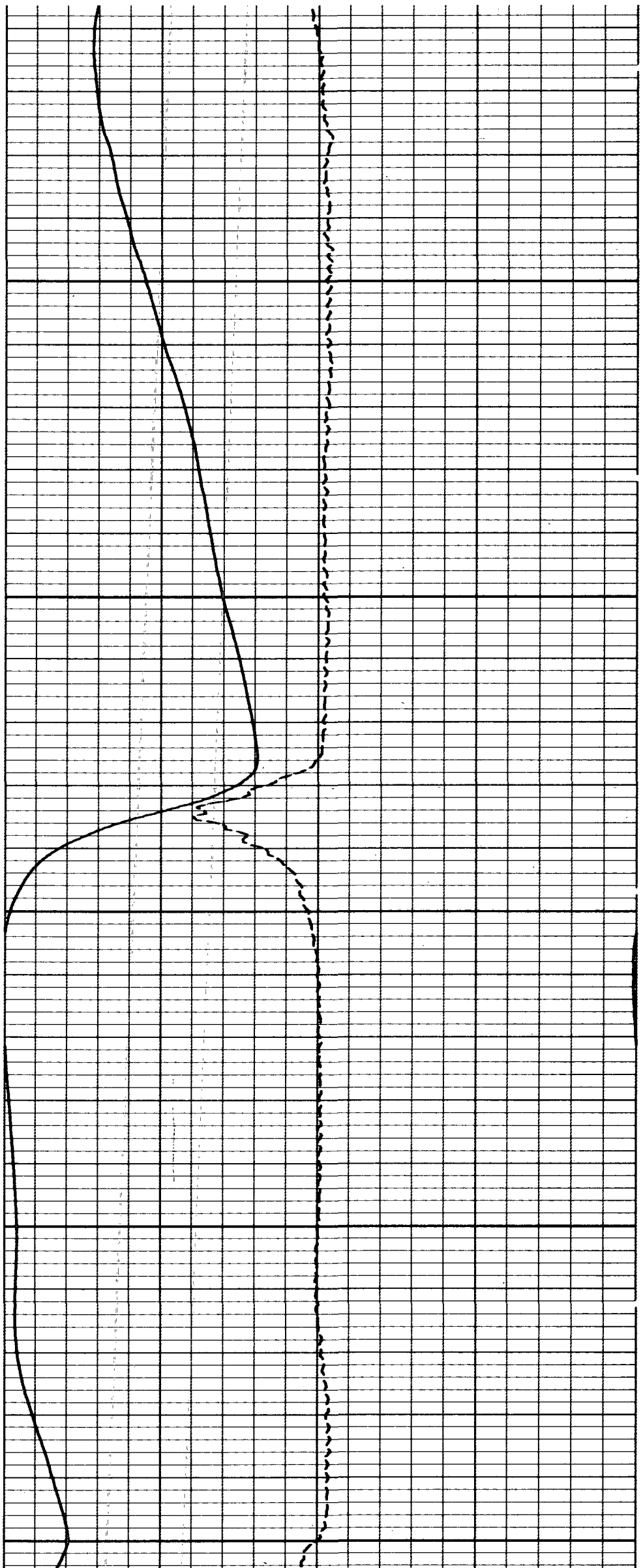
1800

1900





2000



2100

2200

CVEL
CCL

TEMP

FR
TD

120°F

TEMP

130°F

ΔTEMP

140°F

CP 27.772

FILE

1

19-NOV-87 13:44

| | | | |
|------------|--------|--------|------------|
| 0.0 | -200.0 | -1.000 | 1.0000 |
| CVEL(F/MN) | | | DTEM(DF/F) |
| 0.0 | 200.00 | 80.000 | 100.00 |
| CVEL(F/MN) | | | TEMP(DEGF) |
| -19.00 | 1.0000 | | |
| CCL | | | |
| 0.0 | 150.00 | | |
| TEMP(DEGF) | | | |

BEFORE SURVEY CALIBRATION SUMMARY

PERFORMED: 19-NOV-87 12:55
PROGRAM FILE: HTS (VERSION: 27.772 85/08/07)

HTTA ELECTRONICS CALIBRATION SUMMARY

| | MEASURED | | CALIBRATED | | UNITS |
|------|----------|-------|------------|-------|-------|
| | ZERO | PLUS | ZERO | PLUS | |
| TEMP | 38.3 | 231.6 | 32.0 | 212.0 | DEGF |

CP 27.772

FILE

0

19-NOV-87 12:55