

Schlumberger

TEMPERATURE LOG

COMPANY DRILLERS INC.

WELL N. FT. MYERS UTILITY IW #1

FIELD N. FT. MYERS

COUNTY LEE STATE FLORIDA

Other Services:
MRT
CBL-VOL

Permanent Datum PAD LEVEL Elev. above Perm. Datum
Log Measured From PAD LEVEL
Drilling Measured From PAD LEVEL

Date 08-AUG-87
Run No. 1
Depth Driller 1096.0 F
Depth Logger (Sohl.) 1076.0 F
Btm. Log Interval 1074.0 F
Top Log Interval 0.0 F
Casing-Driller 24 @ 1096.0 F @ @
Casing-Logger @ @ @
Bit Size 30
Type Fluid in Hole FRESH WATER
Dens. Visc. @ @ @
PH Fld. Loss @ @ @
Source of Sample NONE @ @ @
Rm @ Meas. Temp. @ @ @
Rmf @ Meas. Temp. @ @ @
Rmo @ Meas. Temp. @ @ @
Source: Rmf/Rmo @ @ @
Rm @ BHT @ @ @
Circulation Ended @ @ @
Logger on Bottom 1800
Max. Rec. Temp. @ @ @
Equip. Location FT MYERS
Recorded By BUCHEL
Witnessed By PITT-CAPE-FRATARCANGELU

COMPANY N. FT. MYERS UTILITY IW #1

FOLD HERE The well name, location and borehole reference data were furnished by the customer.

All interpretations are opinions based on inferences from electrical or other measurements and we cannot, and do not guarantee the accuracy or correctness of any interpretations, and we shall not, except in the case of gross or willful negligence on our part, be liable or responsible for any loss, costs, damages or expenses incurred or sustained by anyone resulting from any interpretations made by any of our officers, agents or employees. These interpretations are also subject to Clause 4 of our General Terms and Conditions as set out in our current Price Schedule.

Run No.	1
Service Order No.	313442
Drilling Fluid Level	60.0 F
Salinity	50.0 PPM
Rmf @ BHT	@ @
Rmo @ BHT	@ @
Logging Speed	2500.0 F/HR
Equipment Data	
Tool Number 1	ATT B
Tool Number 2	PIC B
Tool Number 3	CAL U
Tool Number 4	MTSC
Tool Number 5	
Tool Number 6	
Tool Number 7	
Tool Number 8	
Tool Number 9	
Tool Number 10	
Tool Number 11	
Tool Number 12	

REMARKS:
THANK YOU FOR USING SCHLUMBERGER!!!

PARAMETERS

NAME	VALUE	UNIT
WMUD	8.00000	LB/G
CDAT		
PTHR	10.0000	F/MN
TIRA	.500000	
FDSH	0.0	G/C3
TCSH	0.0	IN
BHS	CASE	

NAME	VALUE	UNIT
SGSN	0000A-00011	
FCHD	CSID	
NTHR	-10.0000	F/MN
VPCF	.830000	
QIDP	FLOW	
BS	30.0000	IN

SENSOR MEASURE POINT TO TOOL ZERO

DTEM	2.5	FEET	MP	1.1	FEET
TEMP	2.5	FEET	CCL	19.2	FEET
CVEL	0.0	FEET	TENS	19.2	FEET
EXT	0.0	FEET	EXP3	0.0	FEET
EXP2	0.0	FEET	EXP1	0.0	FEET
GR	10.3	FEET			

0.0	GR (GAPI)	100.00	60.000	TEMP(DEGF)	80.000
0.0	CVEL(F/MN)	-200.0			
0.0	CVEL(F/MN)	200.00			
-19.00	CCL	1.0000			
0.0	TEMP(DEGF)	150.00			

CP 30.22

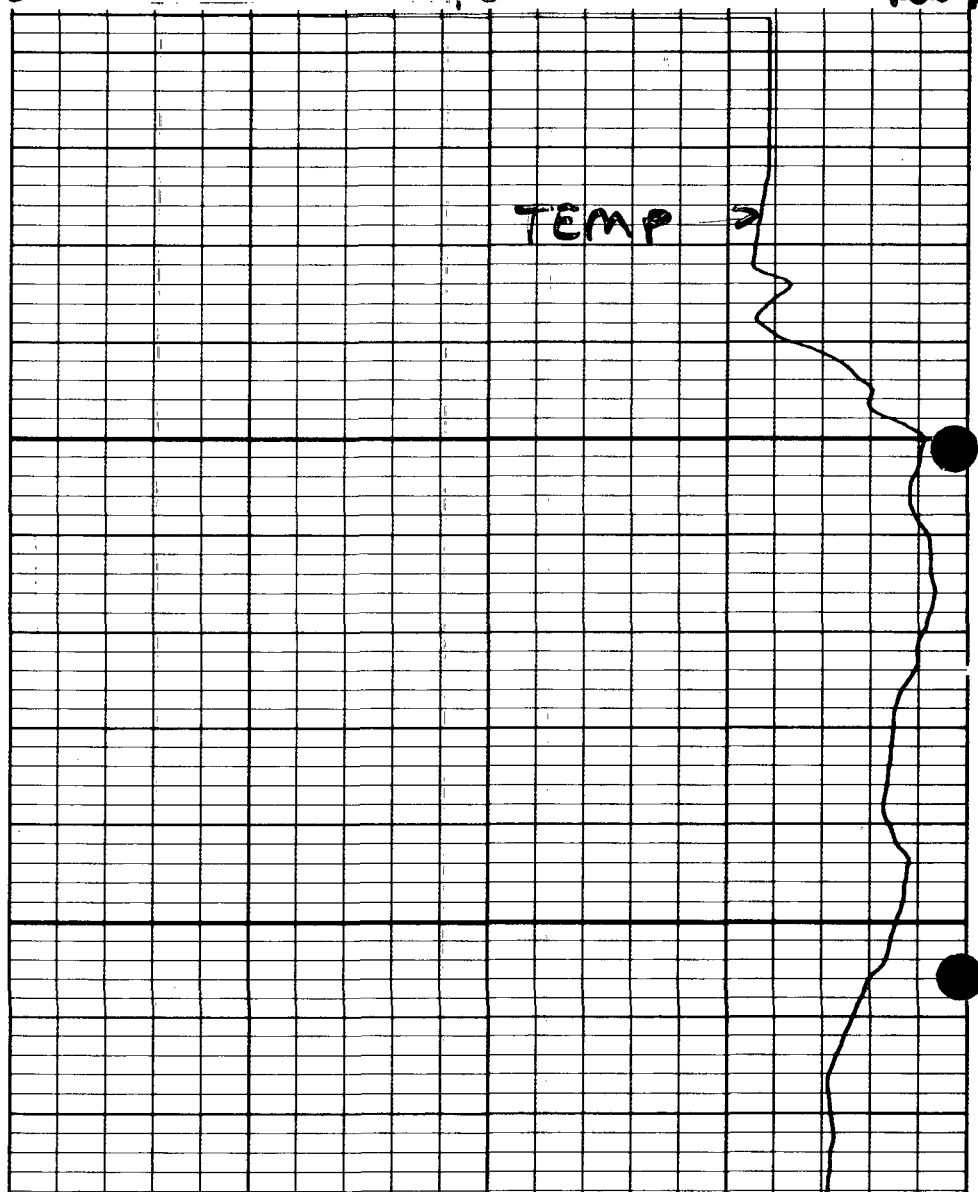
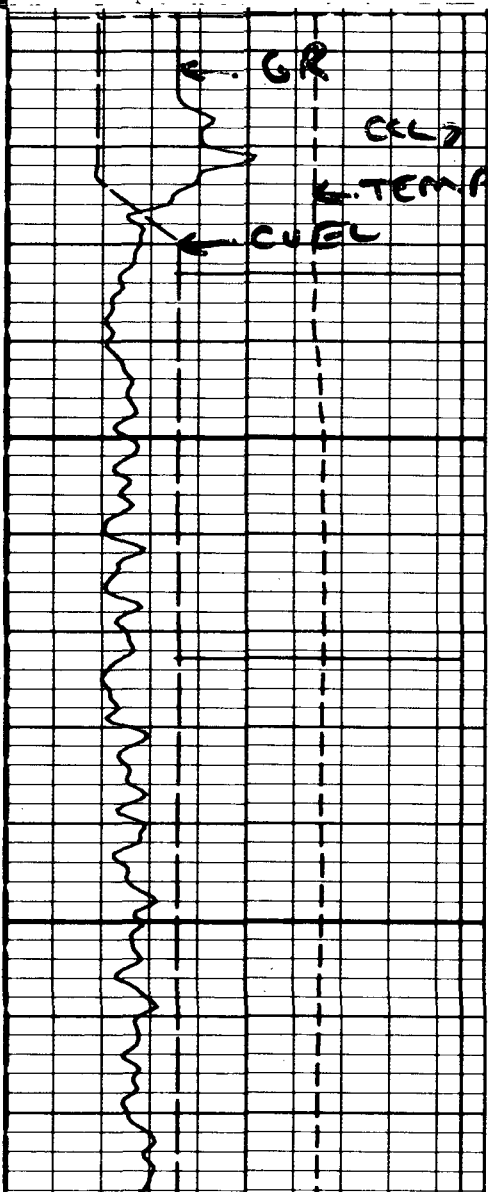
FILE 3

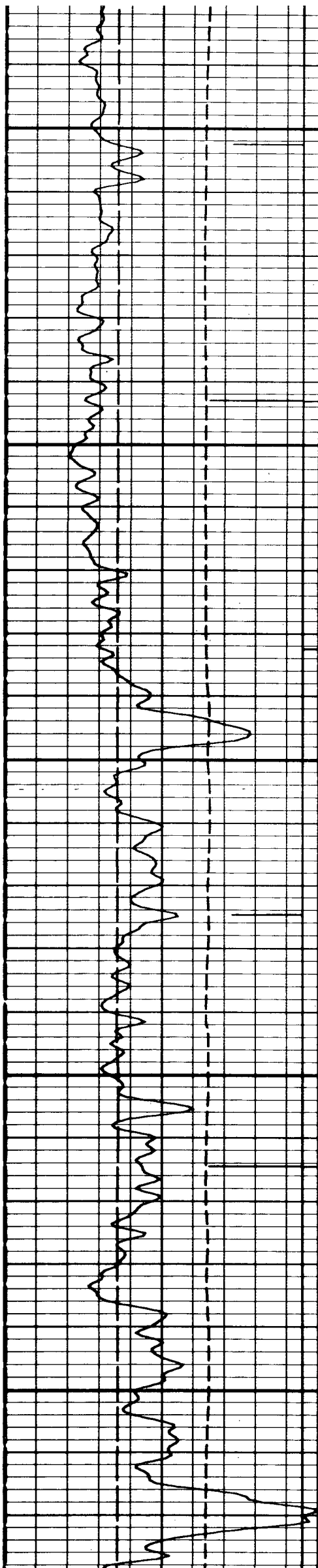
06-AUG-87 18:19

5"/100 80°F

90°F

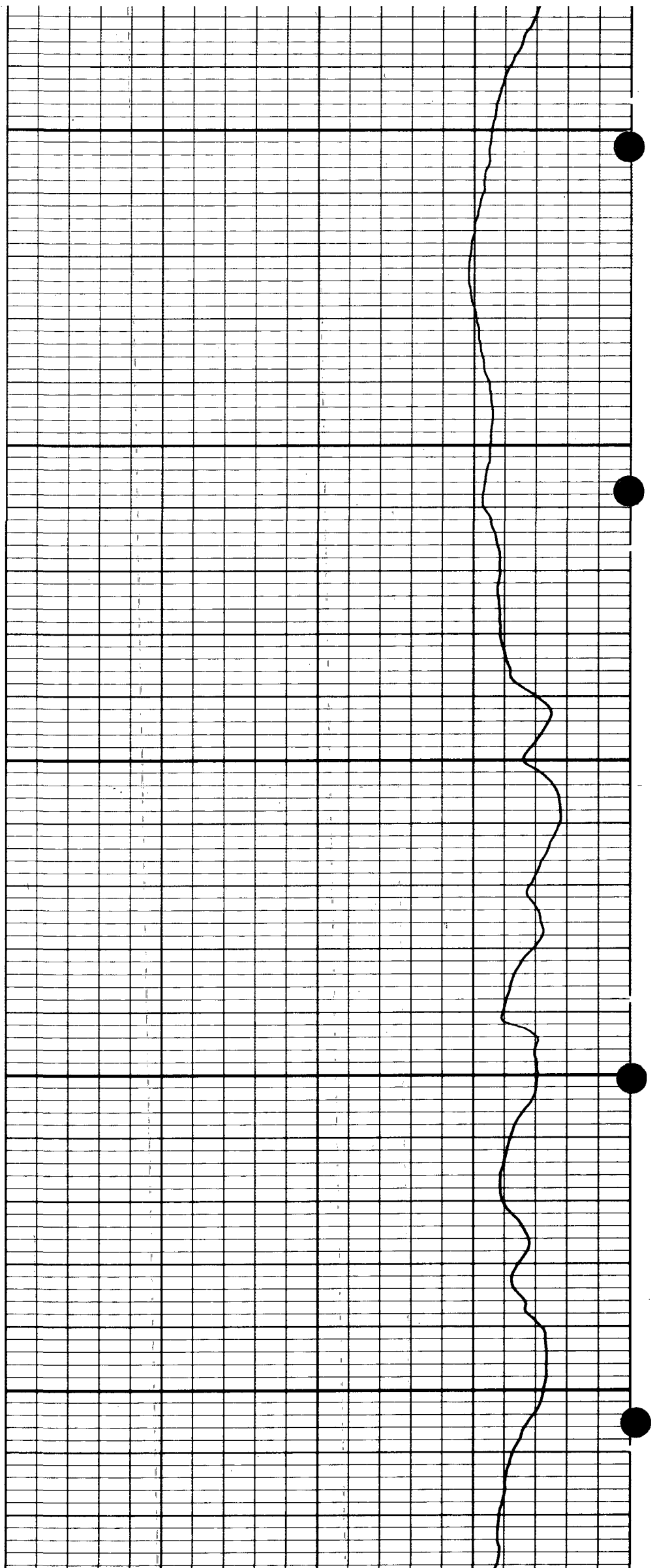
100°F

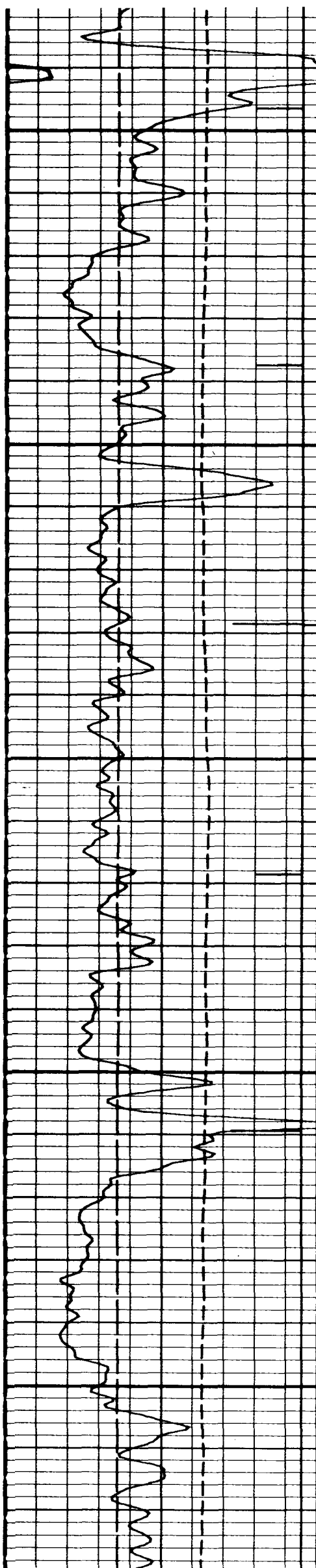




200

300

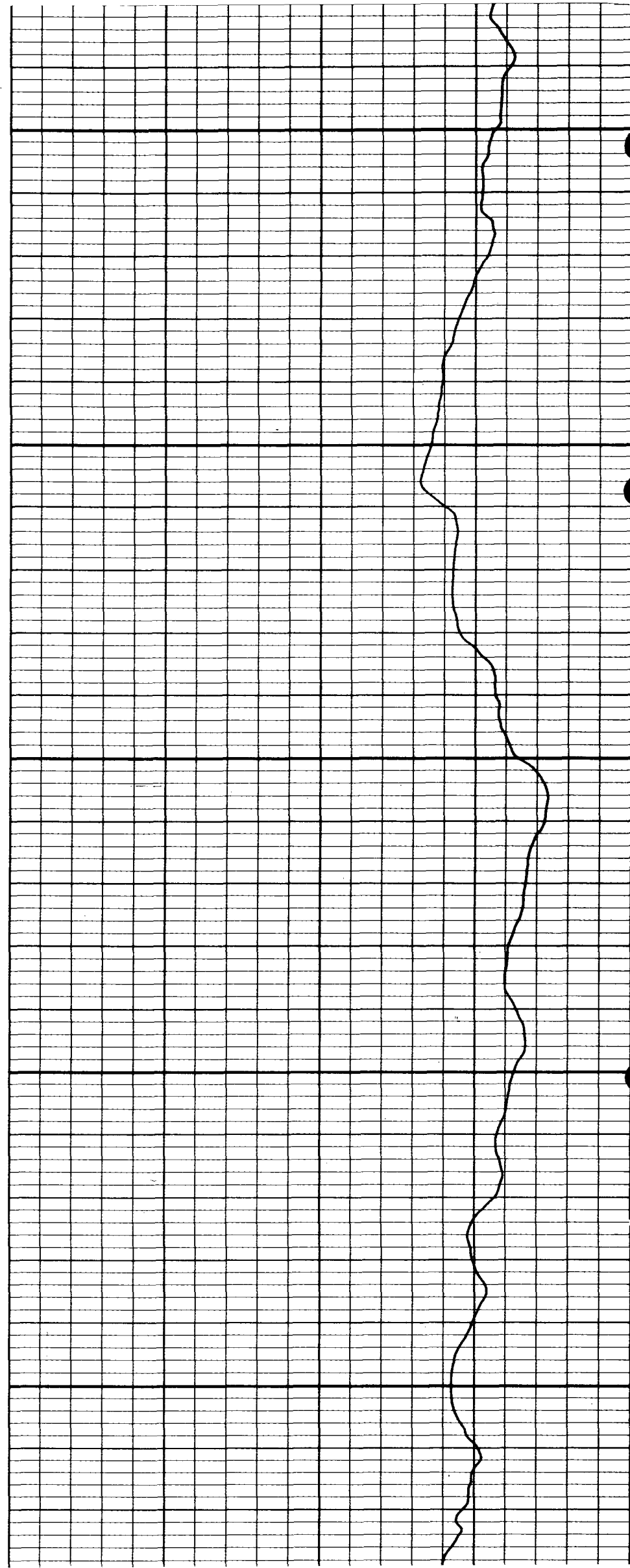


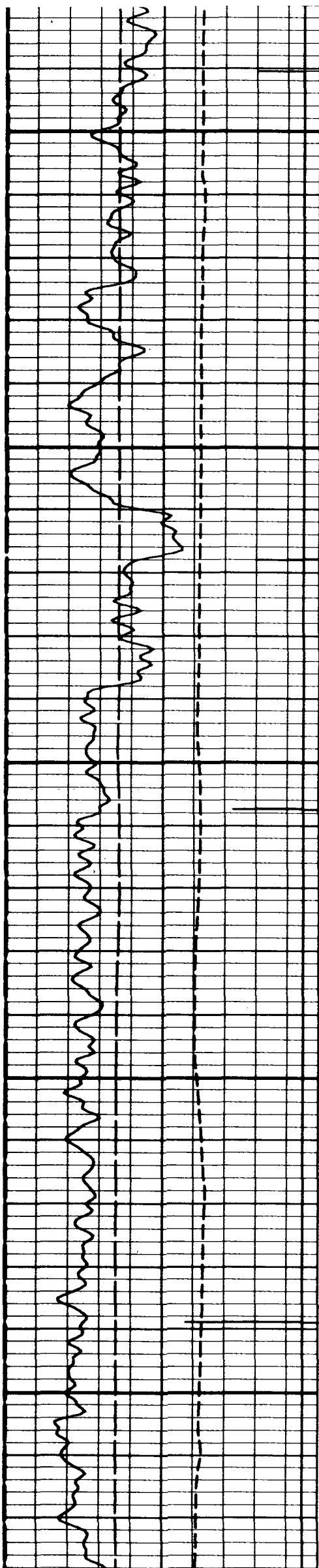


400

500

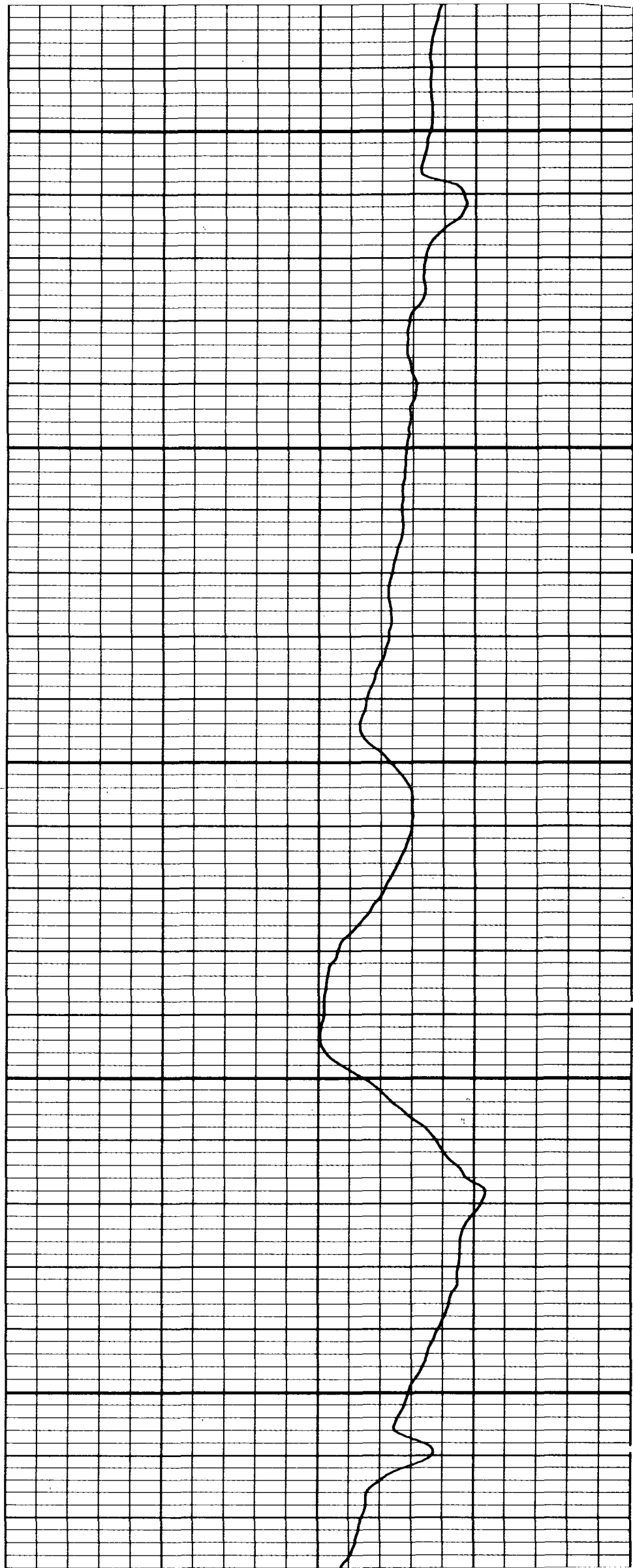
600

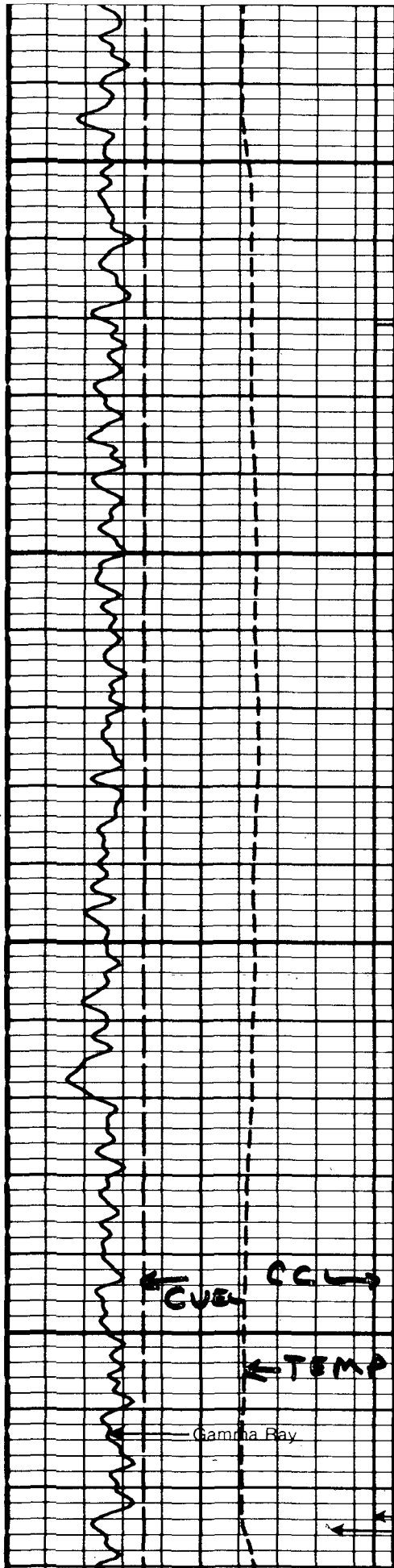




700

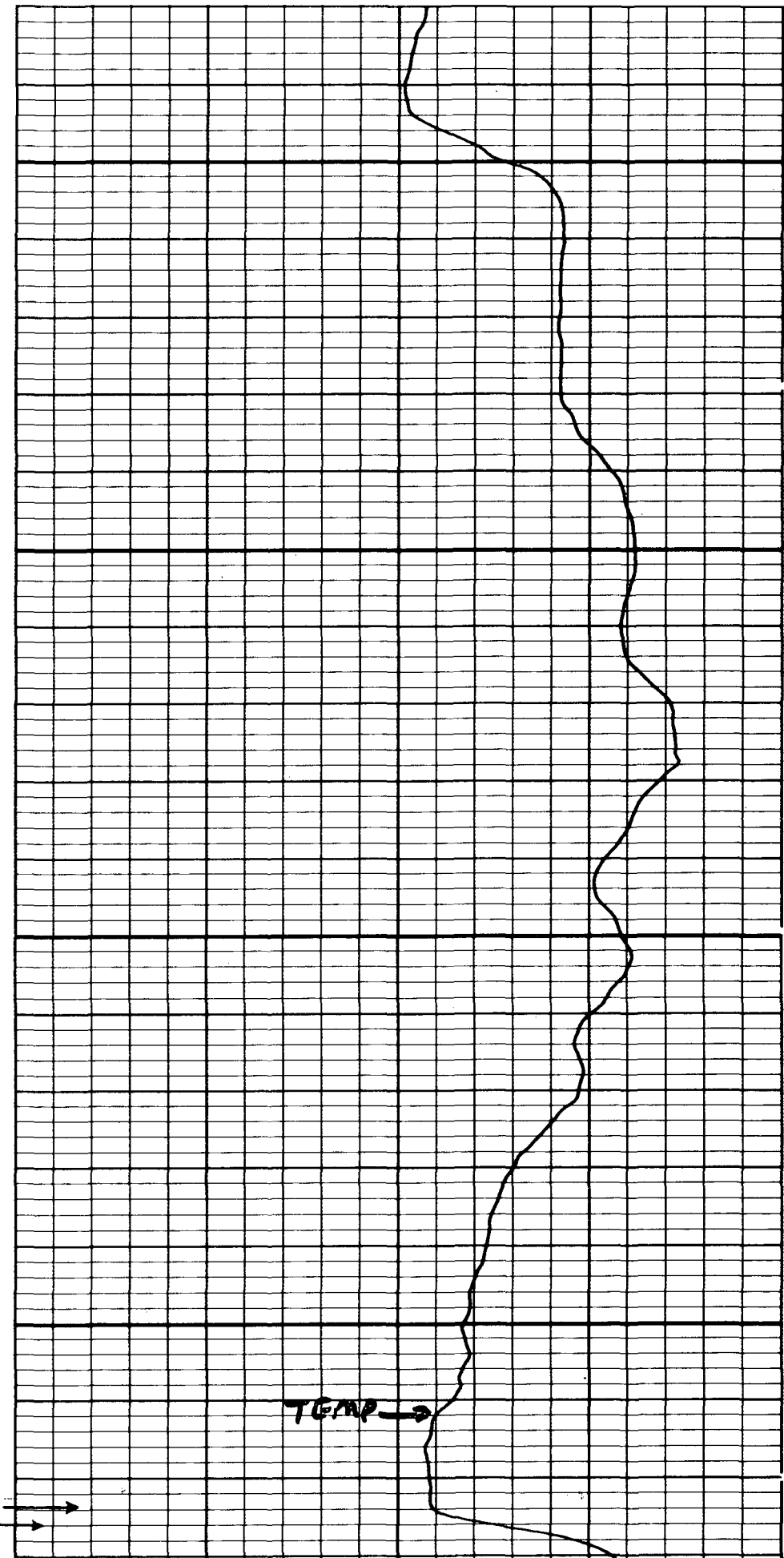
800





900

1000



CVEL

TEMP

Gamma Ray

TEMP

TD FR

5" / 100' 80°F

90%

100%

CP 30.22

FILE 3

06-AUG-87 18:34

0.0	100.00
GR (GAPI)	
0.0	-200.0
CVEL (F/MN)	
0.0	200.00
CVEL (F/MN)	

60.000	80.000
TEMP (DEGF)	

CCL

0.0

150.00

TEMP(DEGF)

DATA ACQUIRED LOGGING DOWN