



**YOUNGQUIST
BROTHERS, Inc**

GEOPHYSICAL LOGGING DIVISION

**HIGH RESOLUTION
TEMPERATURE
LOG**

Company NORTH FT. MYERS UTILITY
Well IW-1
Field W.W.T.P.
County LEE
State FLORIDA

Company NORTH FT. MYERS UTILITY
Well IW-1
Field W.W.T.P.
County LEE
State FLORIDA

Location	Permanent Datum	GROUND LEVEL	Elevation	Other Services RTS VIDEO
	Log Measured From	GROUND LEVEL		
	Drilling Measured From	GROUND LEVEL		

Date	8-NOV-2007
Run Number	MIT 2007
Depth Driller	2600'
Depth Logger	2498'
Bottom Logged Interval	2498'
Top Log Interval	SURFACE
Open Hole Size	12"
Type Fluid	WATER
Density / Viscosity	NA
Max. Recorded Temp.	94 F.
Estimated Cement Top	NA
Time Well Ready	0800
Time Logger on Bottom	0830
Equipment Number	103
Location	FT. MYERS
Recorded By	CATHEY
Witnessed By	L. HOWARD

	Borehole Record		Run No.	Borehole Record		To
	Bit	From		Bit	From	
Casing Record						
Surface String		12"				Bottom 2340'
Prod. String						
Production String						
Liner						

<<< Fold Here >>>

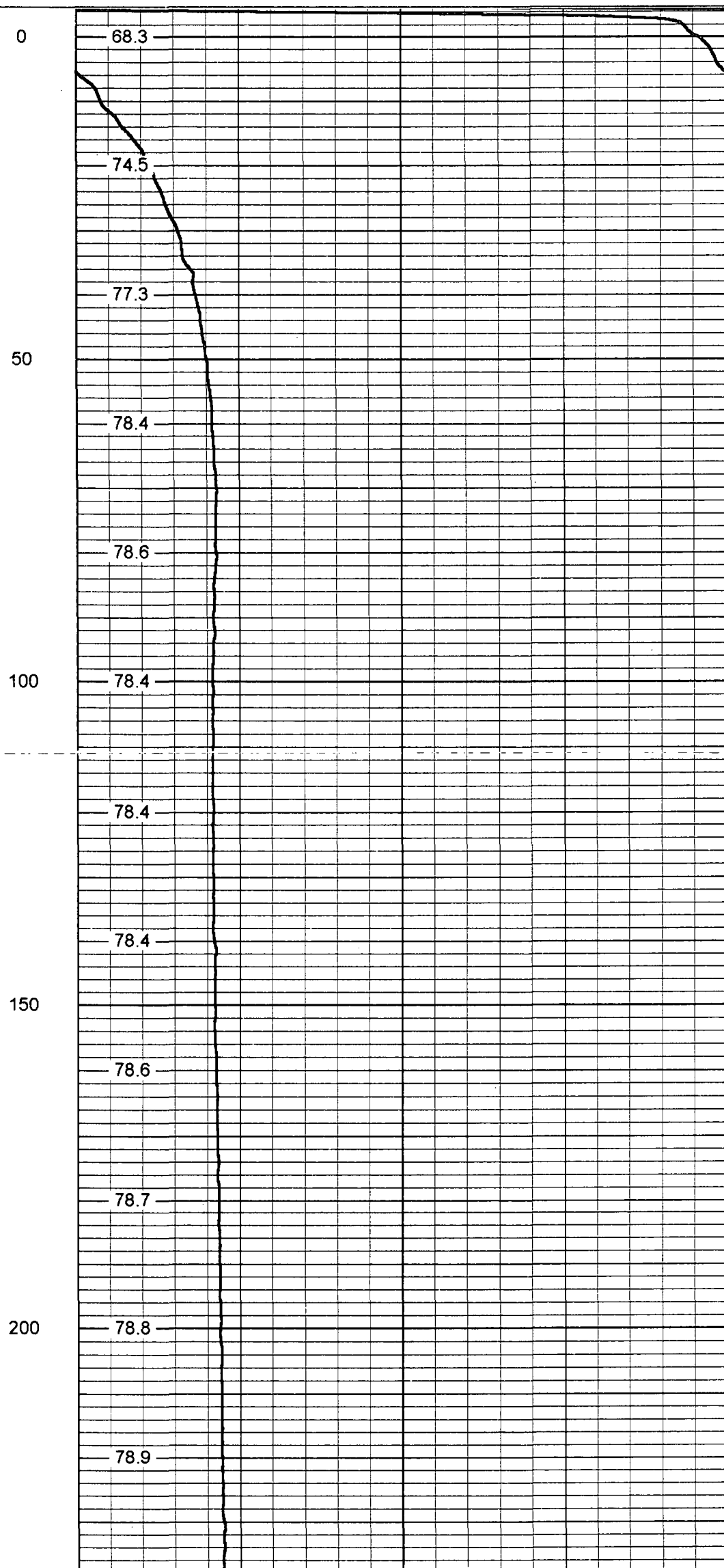
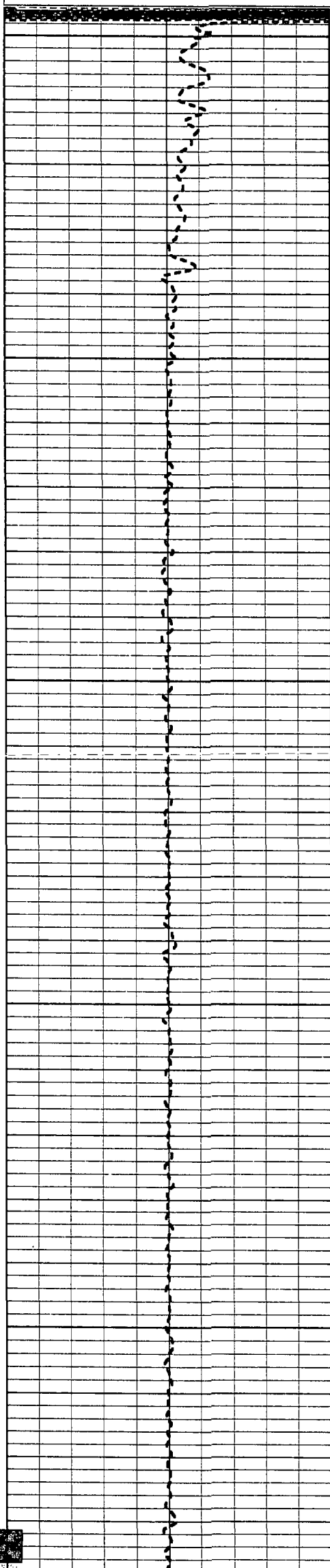
All interpretations are opinions based on inferences from electrical or other measurements and we cannot and do not guarantee the accuracy or correctness of any interpretation, and we shall not, except in the case of gross or willful negligence on our part, be liable or responsible for any loss, costs, damages, or expenses incurred or sustained by anyone resulting from any interpretation made by any of our officers, agents or employees. These interpretations are also subject to our general terms and conditions set out in our current Price Schedule.

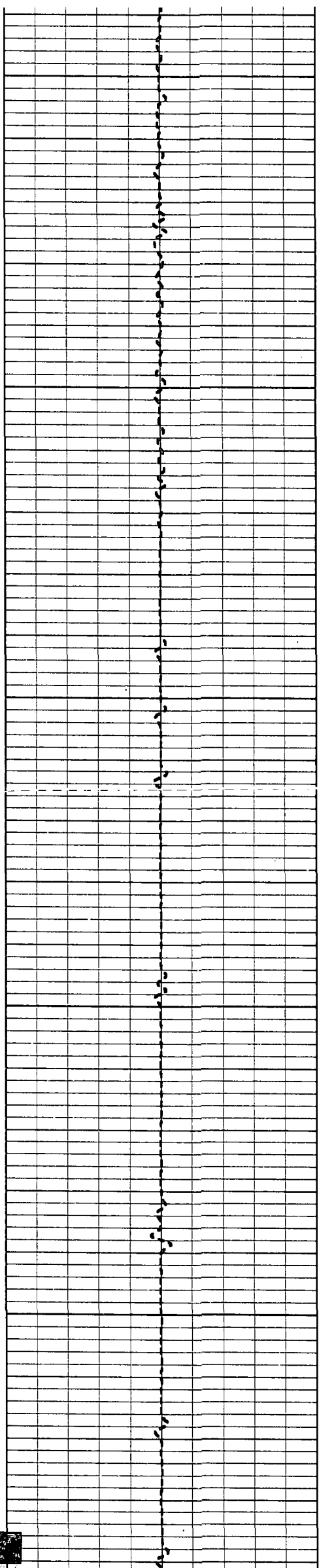
Comments



TEMPERATURE

Database File: nfmumit.db
 Dataset Pathname: pass1
 Presentation Format: temp
 Dataset Creation: Thu Nov 08 08:05:13 2007 by Log 6.2_B4
 Charted by: Depth in Feet scaled 1:240





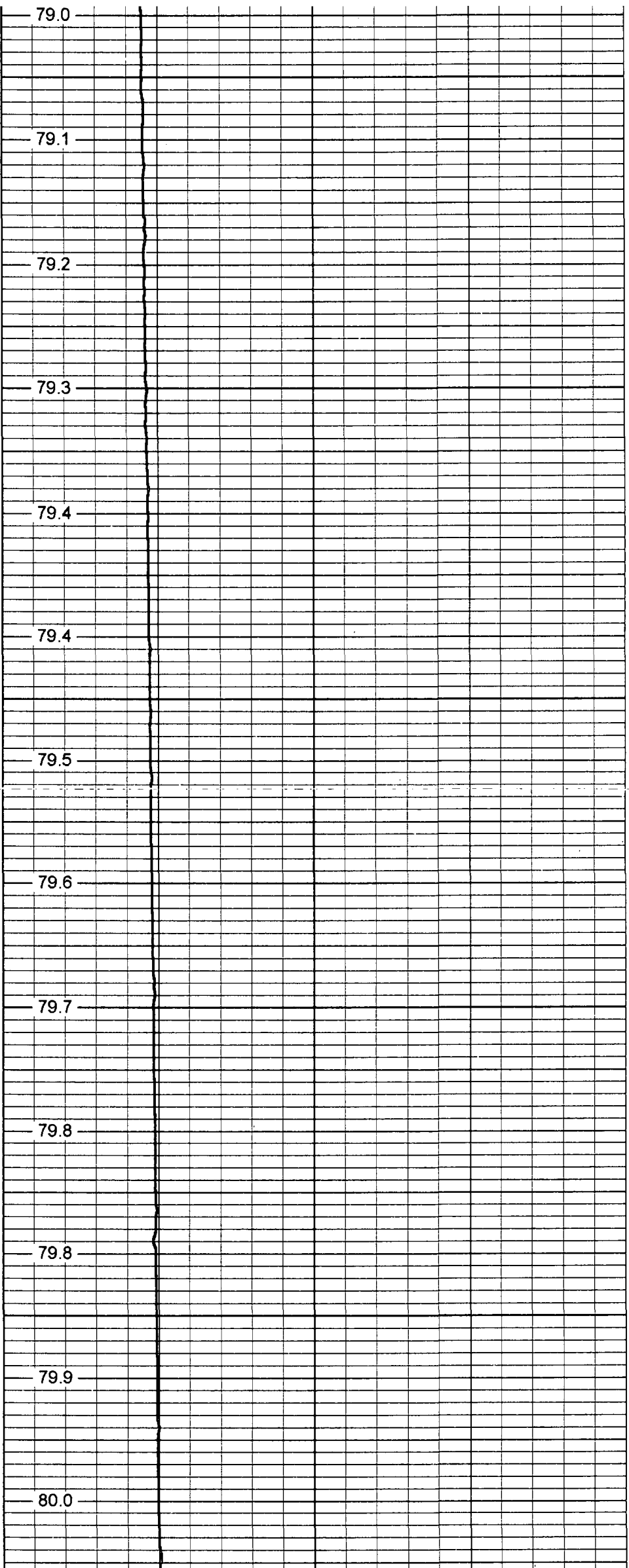
250

300

350

400

450



79.0

79.1

79.2

79.3

79.4

79.4

79.5

79.6

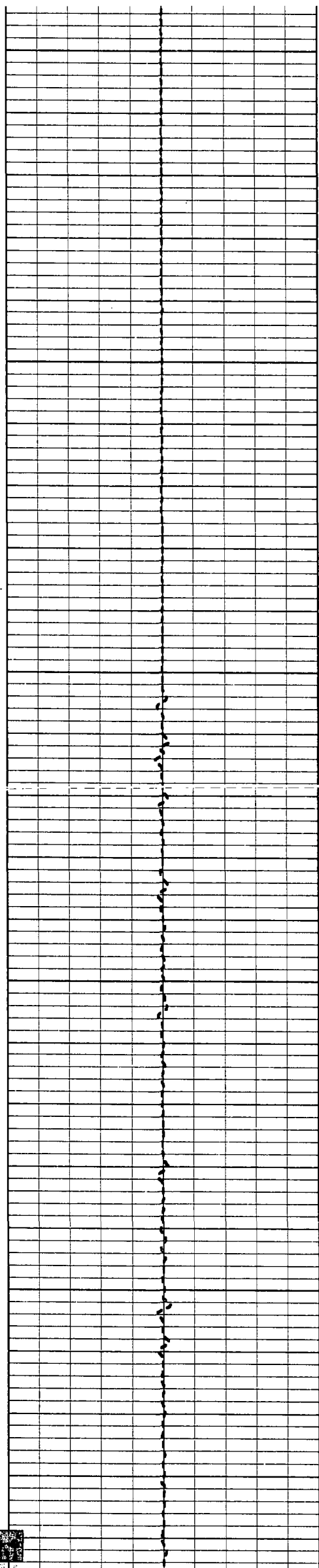
79.7

79.8

79.8

79.9

80.0



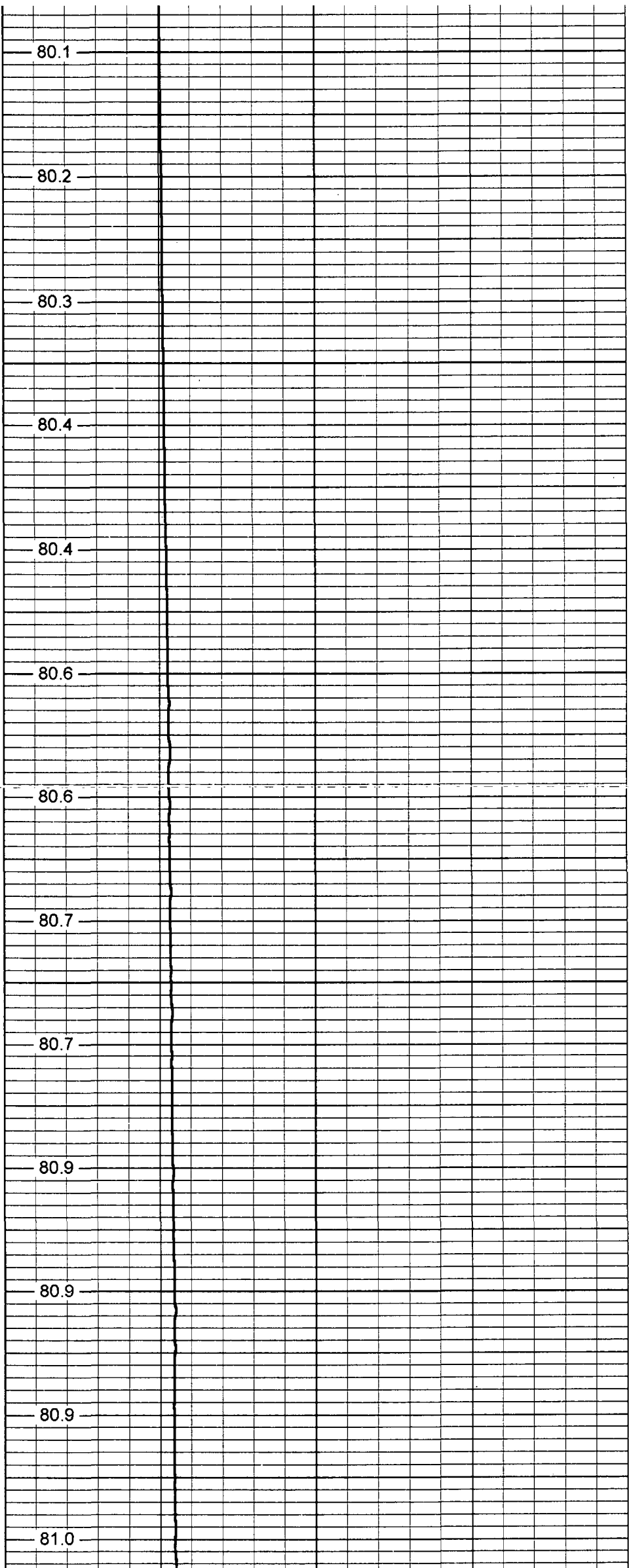
500

550

600

650

700



80.1

80.2

80.3

80.4

80.4

80.6

80.6

80.7

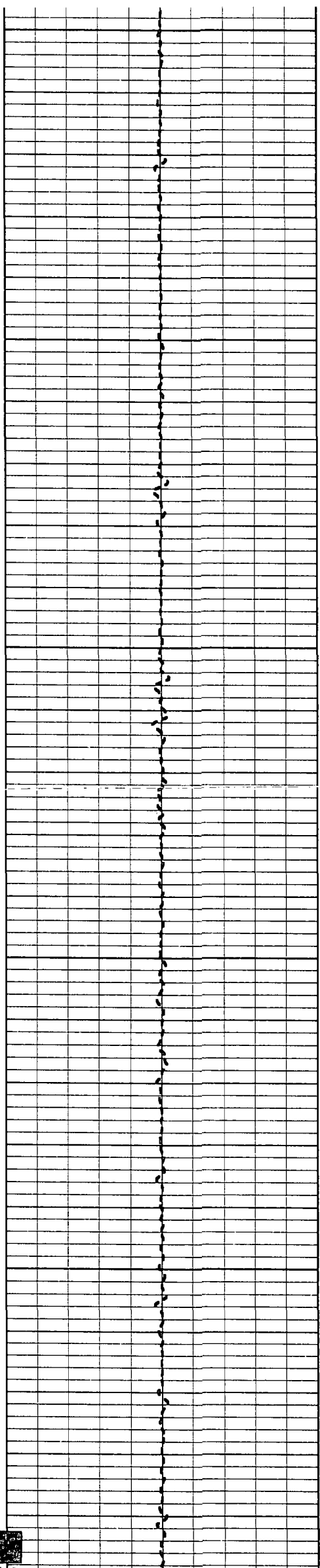
80.7

80.9

80.9

80.9

81.0



750

81.1

81.1

800

81.2

81.3

81.3

850

81.3

81.5

900

81.5

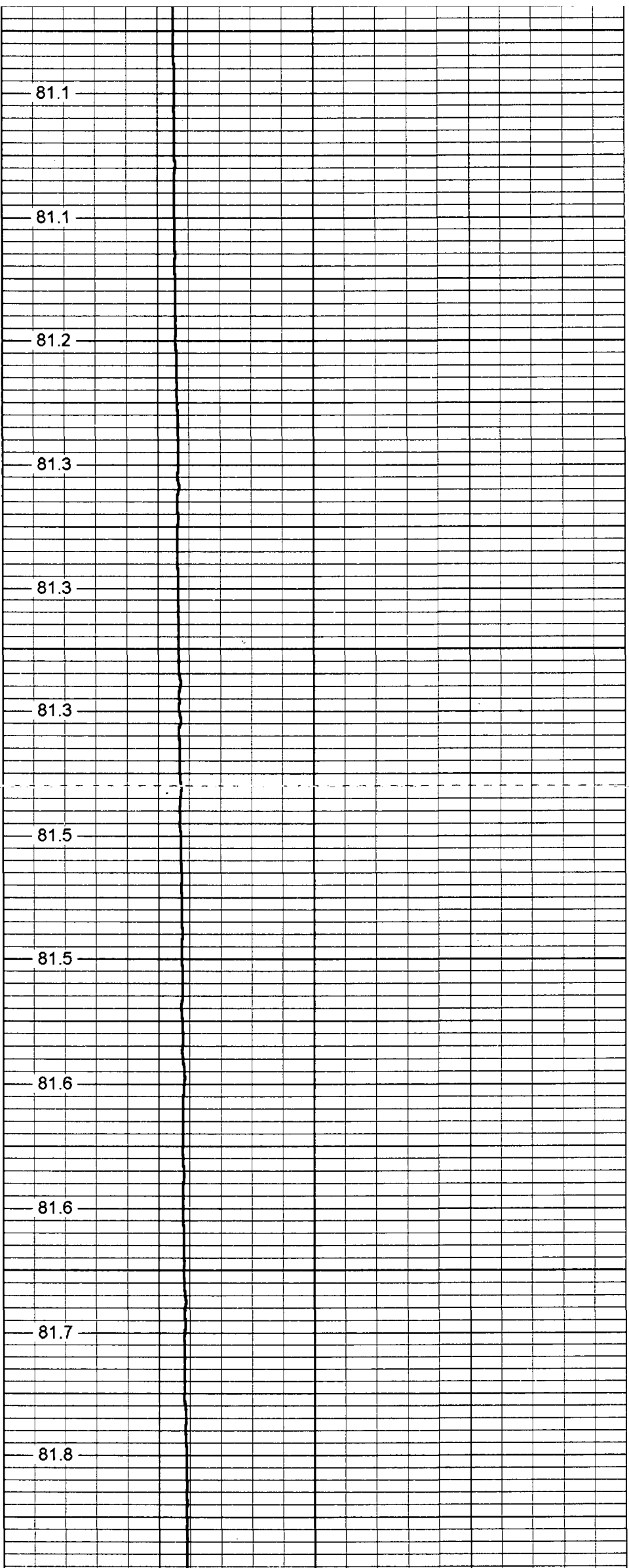
81.6

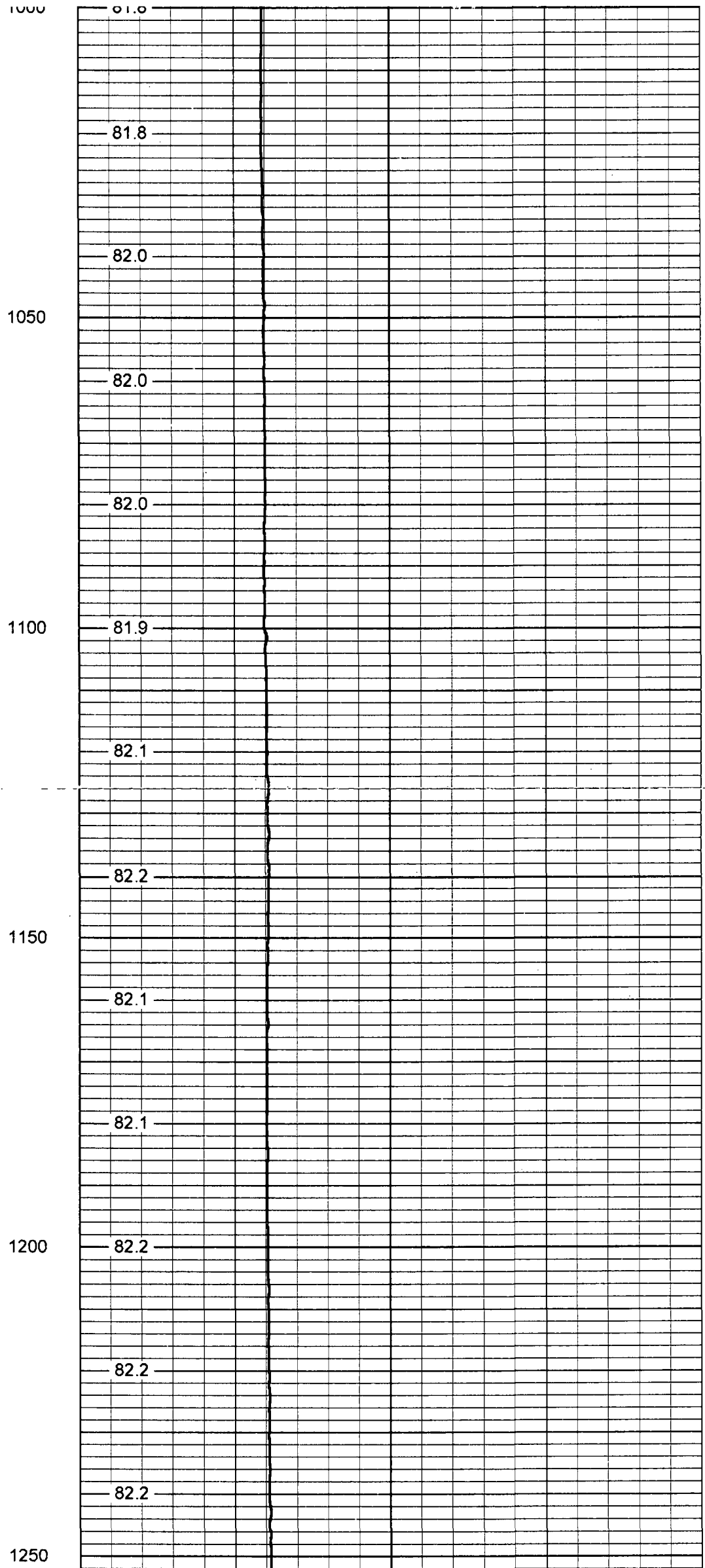
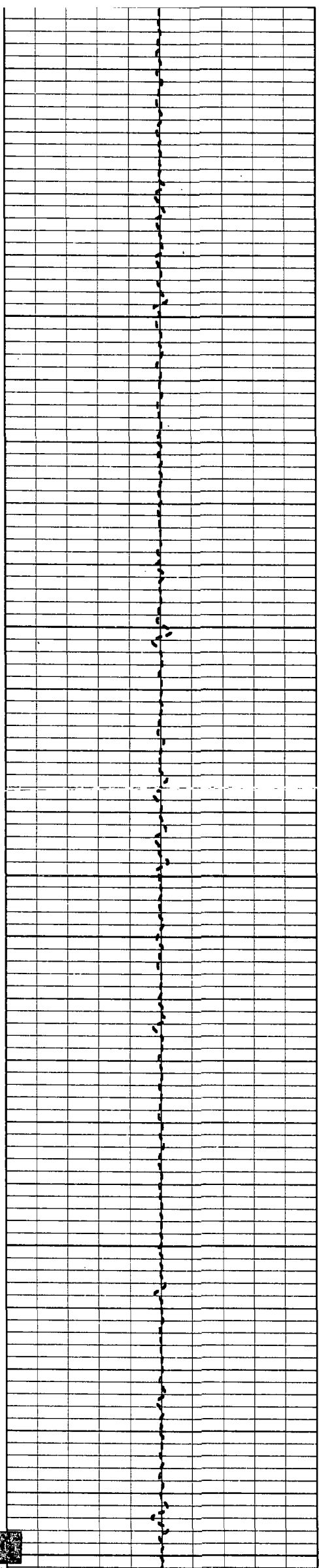
81.6

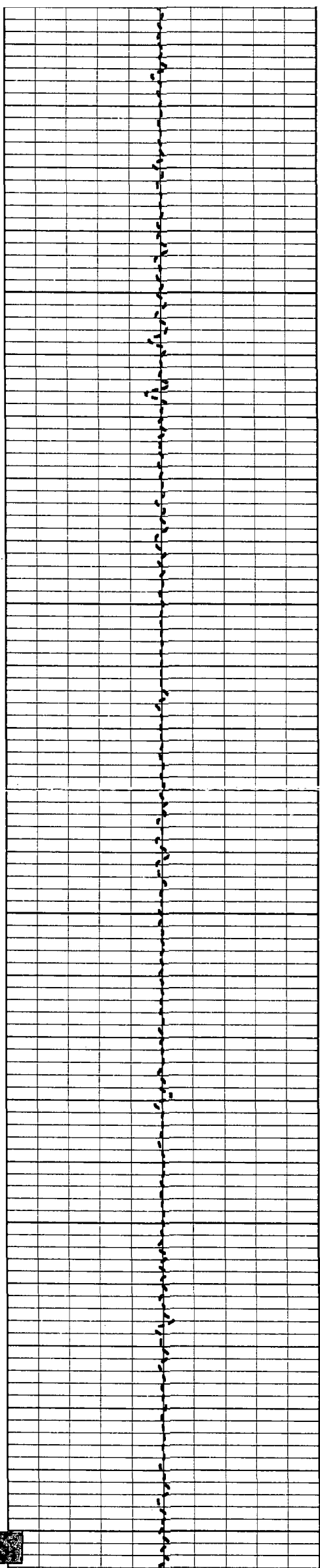
950

81.7

81.8







1300

1350

1400

1450

1500

82.3

82.3

82.4

82.5

82.6

82.6

82.7

82.6

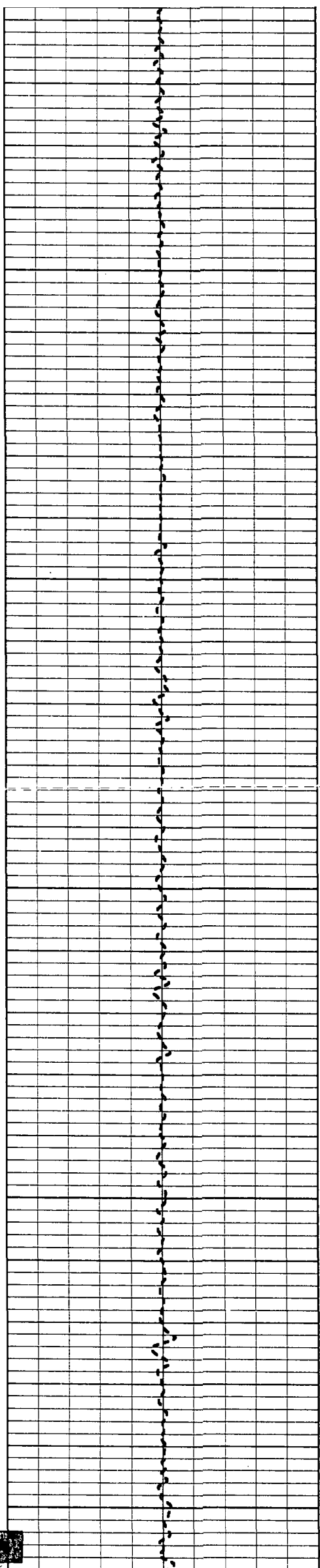
82.7

82.7

82.8

82.9

83.0



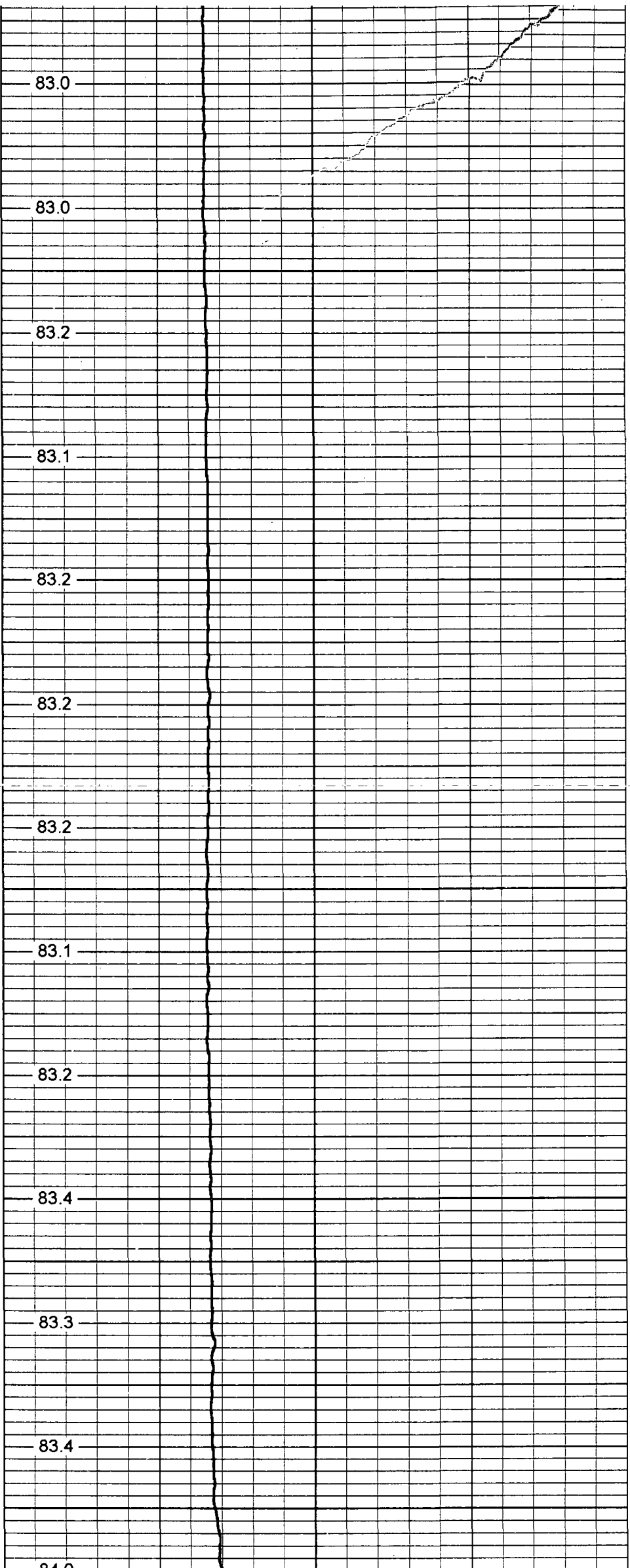
1550

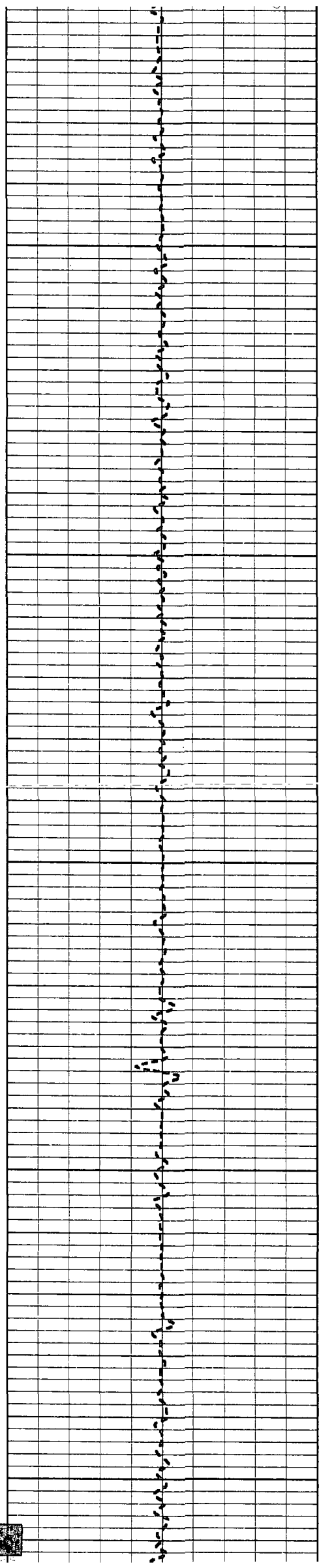
1600

1650

1700

1750





1800

1850

1900

1950

2000

83.4

83.3

83.4

83.4

83.5

83.5

83.7

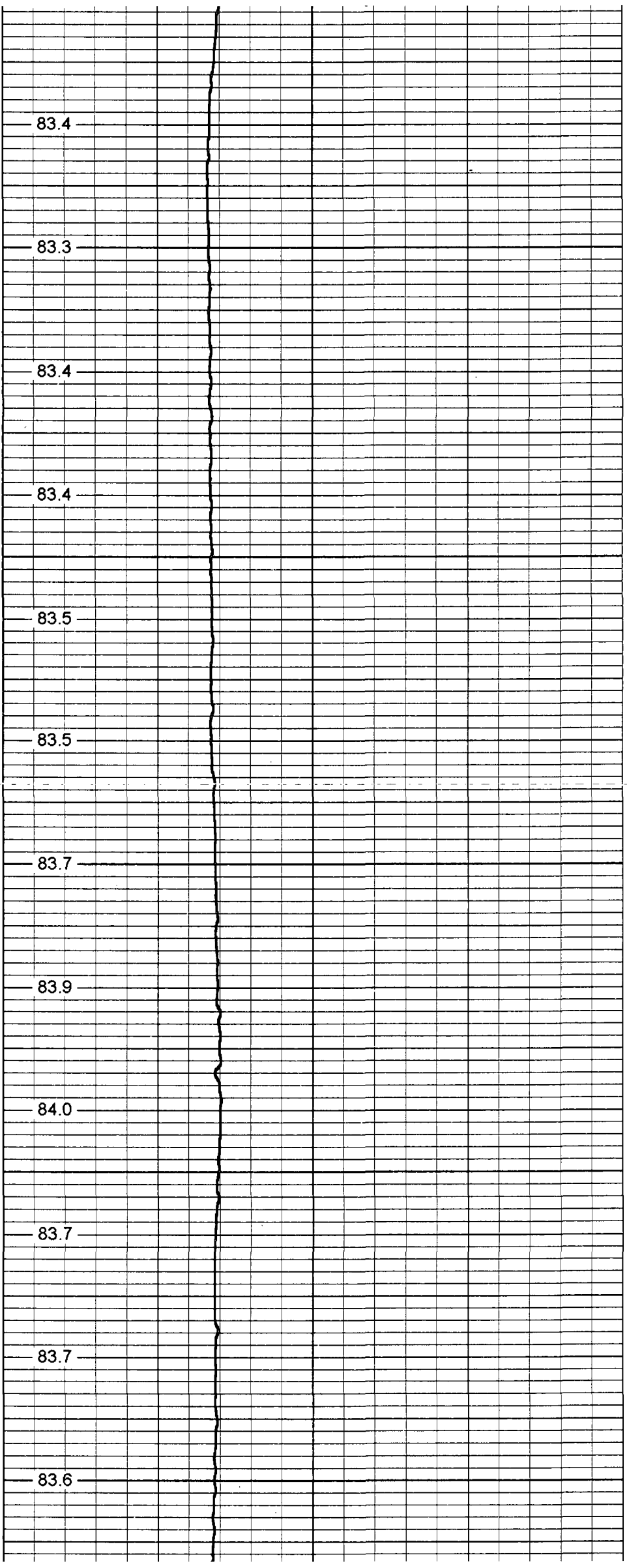
83.9

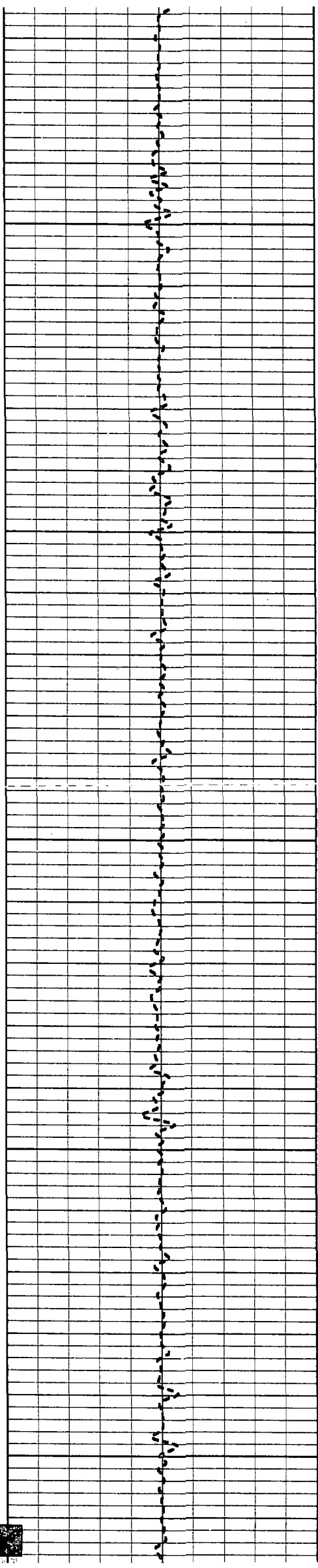
84.0

83.7

83.7

83.6





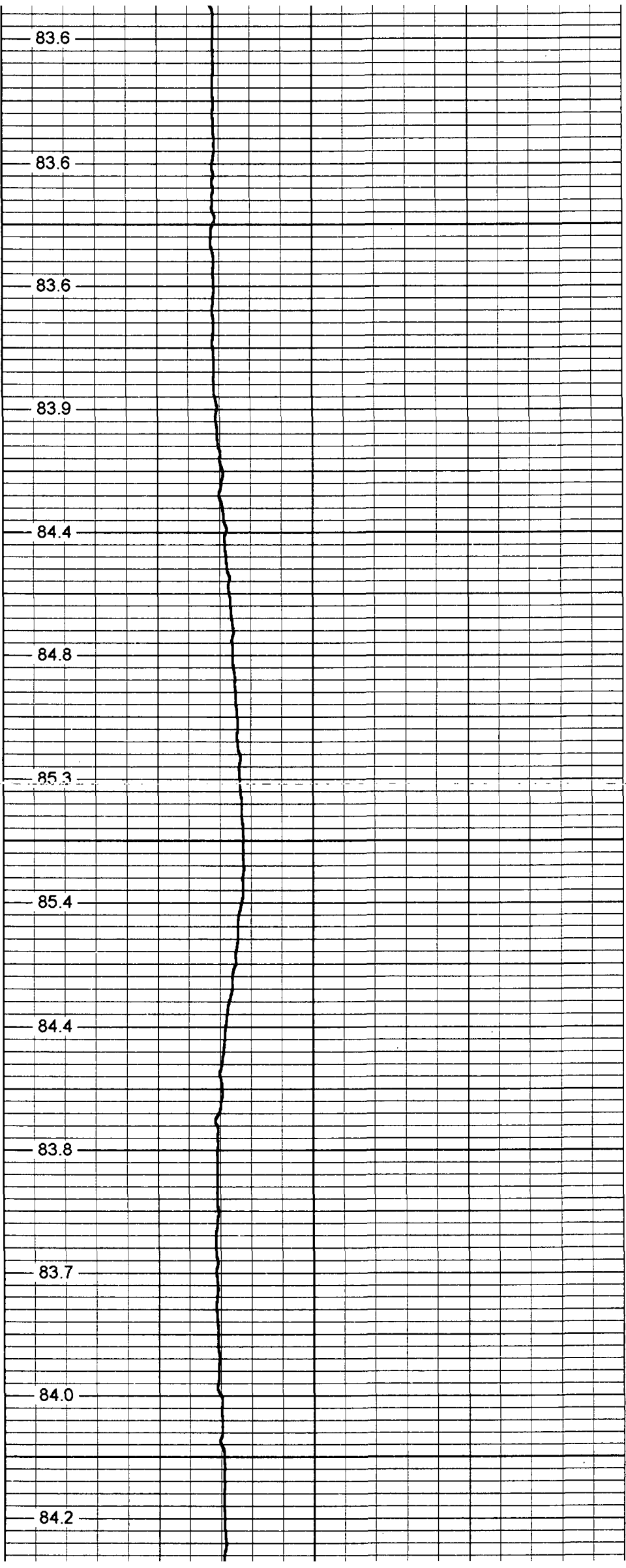
2050

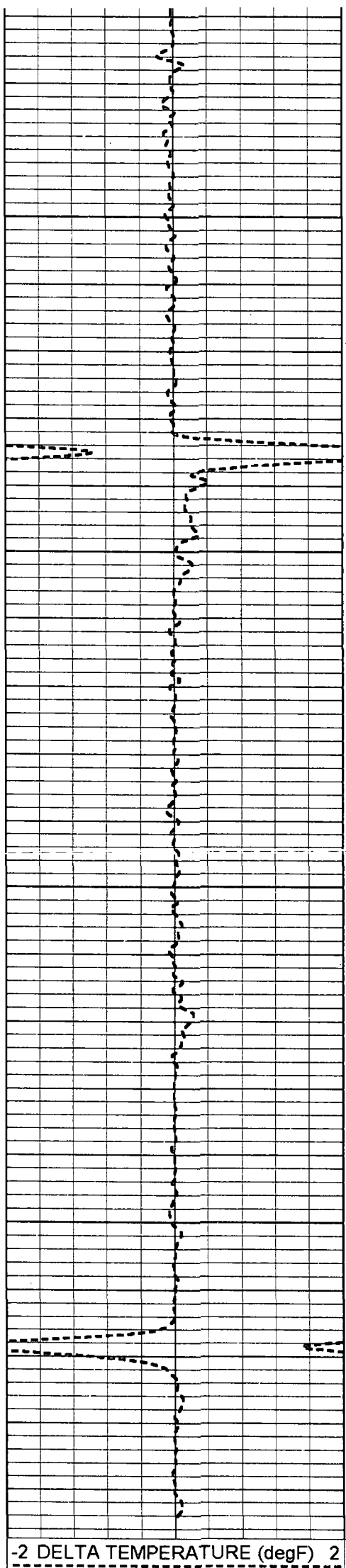
2100

2150

2200

2250





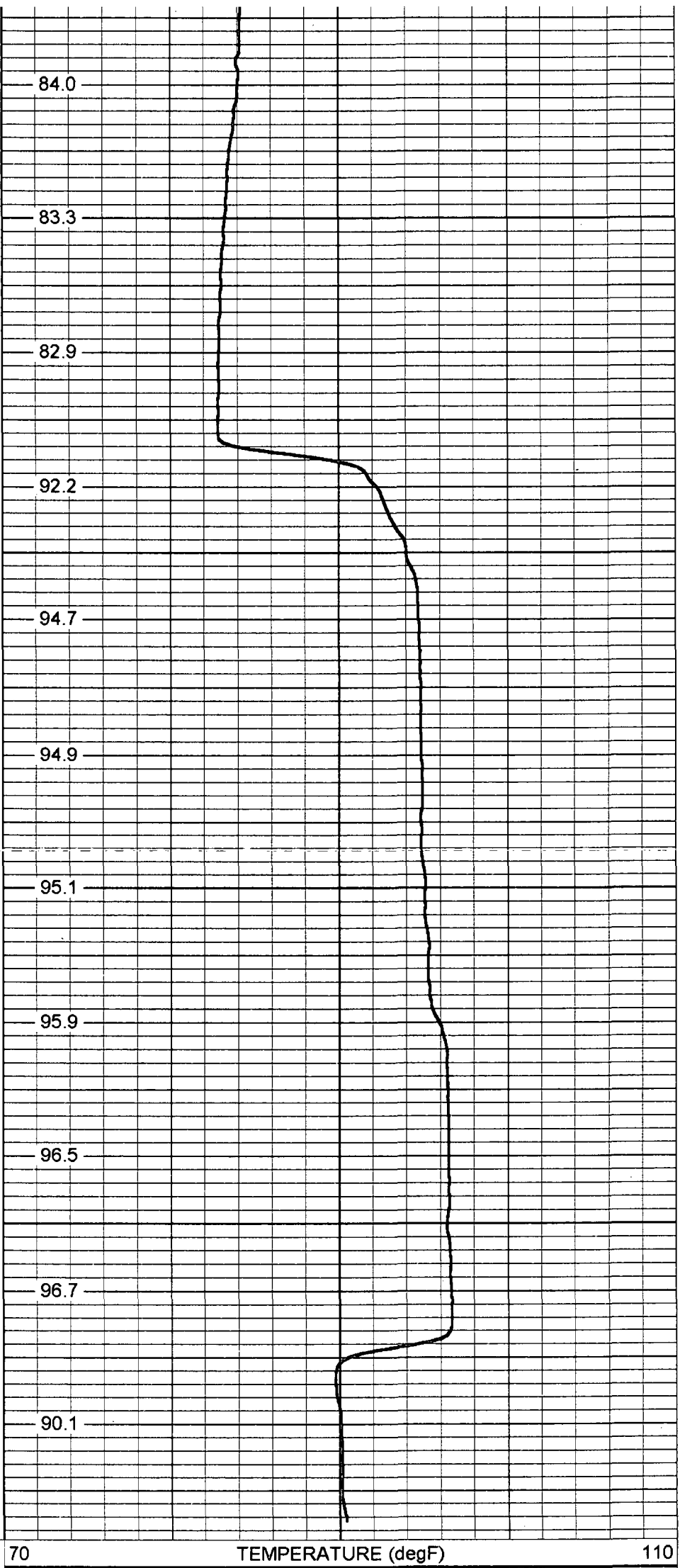
2300

2350

2400

2450

-2 DELTA TEMPERATURE (degF) 2



84.0

83.3

82.9

92.2

94.7

94.9

95.1

95.9

96.5

96.7

90.1

70

TEMPERATURE (degF)

110

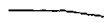
Serial Number:
Tool Model:
Performed:

952
RTS
Tue Feb 27 11:22:50 2007

Point #	Reading		Reference	
1	420	cps	42	degF
2	830.3	cps	83	degF
3	1470.5	cps	147	degF

TEMP-RTS (952)
70.00 lb 1.69 in OD 25.50 ft

TEMP 0.10 ft



Dataset:	run1/pass1
Total Length:	25.50 ft
Total Weight:	70.00 lb
O.D.	1.69 in

