



YOUNGQUIST BROTHERS, Inc
GEOPHYSICAL LOGGING DIVISION

FLUID CONDUCTIVITY TEMPERATURE
SOUTHERN LOGGING

2009 JUN 31 P 4: 14

Company CITY OF MARCO ISLAND
Well IW-2
Field MARCO ISLAND FIELD
County COLLIER
State FL

Company CITY OF MARCO ISLAND
Well IW-2
Field MARCO ISLAND FIELD
County COLLIER
State FL

Location: API #:

Other Services SEE COMMENTS

SEC TWP RGE Elevation

Permanent Datum Log Measured From Elevation
Drilling Measured From

Date	30-AUG-2008		
Run Number	FIVE		
Depth Driller	2600'		
Depth Logger	2600'		
Bottom Logged Interval	2600'		
Top Log Interval	CASING		
Open Hole Size	12.25"		
Type Fluid	WATER		
Density / Viscosity	NA		
Max. Recorded Temp.	93 F		
Estimated Cement Top	NA		
Time Well Ready	1900		
Time Logger on Bottom	2000		
Equipment Number	103		
Location	FT. MYERS		
Recorded By	CATHEY		
Witnessed By	D. LEGGIT		
Borehole Record		Borehole Record	
Run Number	Bit	From	To
ONE	58.5"	CASING	403'
TWO	12.25"	CASING	910'
THREE	46.5"	CASING	903'
FOUR	12.25"	CASING	2600'
Casing Record	Size	Wd/Ft	Bottom
Surface String	48"	.375 W.T.	399'
Prot. String	35"	.375 W.T.	900'
Production String			
Liner			

<<< Fold Here >>>

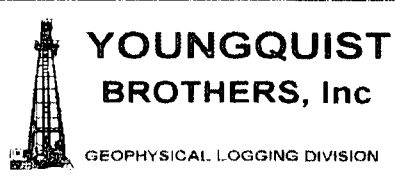
All interpretations are opinions based on inferences from electrical or other measurements and we cannot and do not guarantee the accuracy or correctness of any interpretation, and we shall not, except in the case of gross or willful negligence on our part, be liable or responsible for any loss, costs, damages, or expenses incurred or sustained by anyone resulting from any interpretation made by any of our officers, agents or employees. These interpretations are also subject to our general terms and conditions set out in our current Price Schedule.

Comments

OTHER SERVICES:

X-Y CALIPER GAMMA RAY
BOREHOLE COMPENSATED SONIC
DUAL INDUCTION
FLOWMETER

DYNAMIC FLOWRATE = 185 GPM

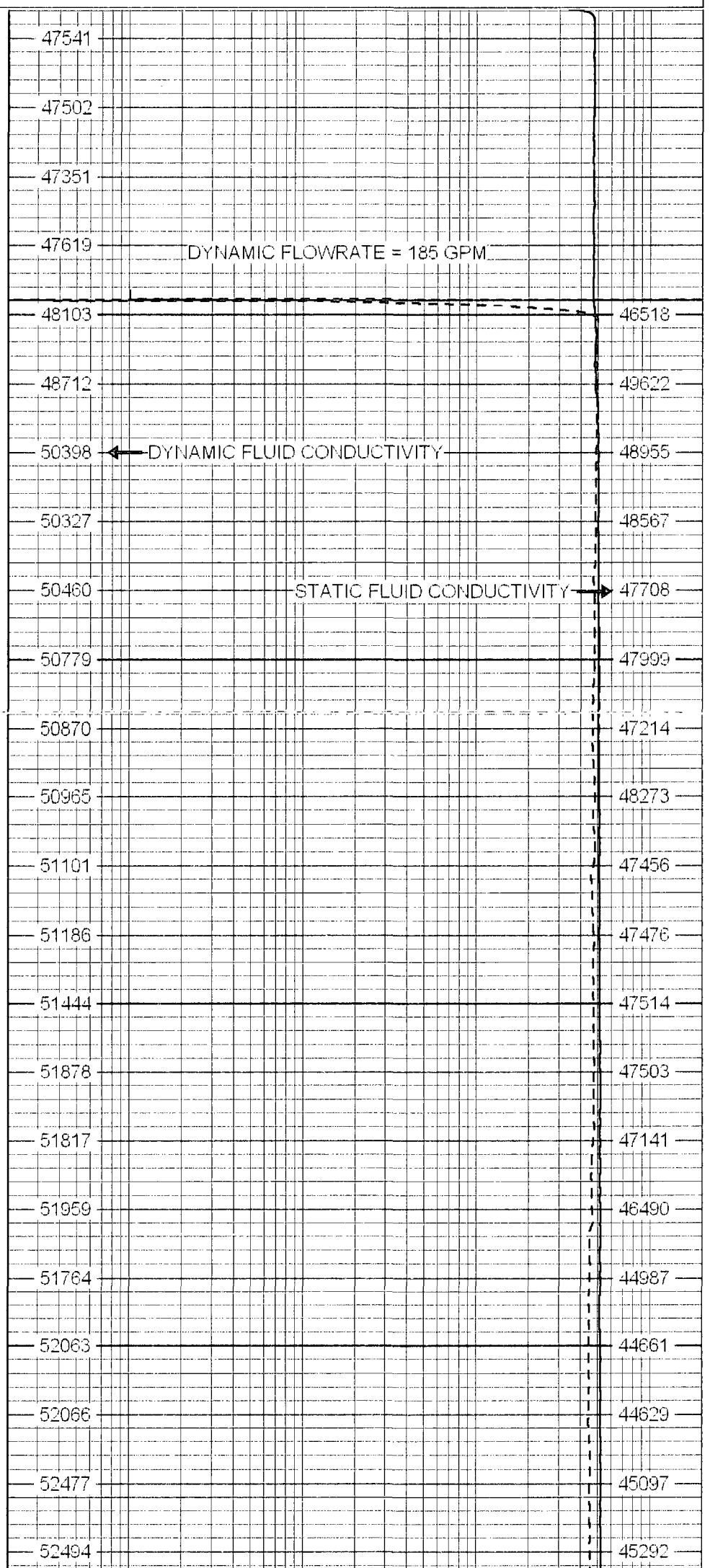
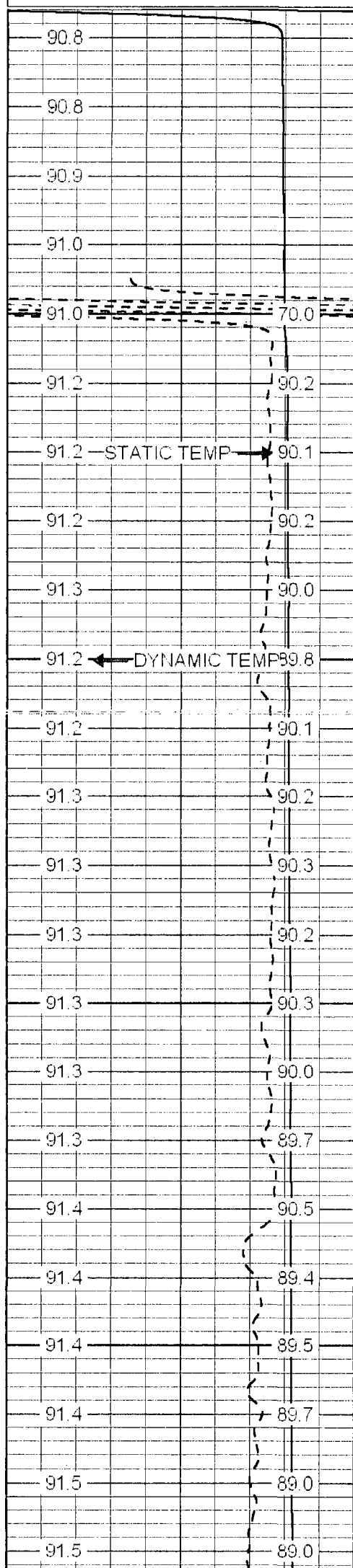


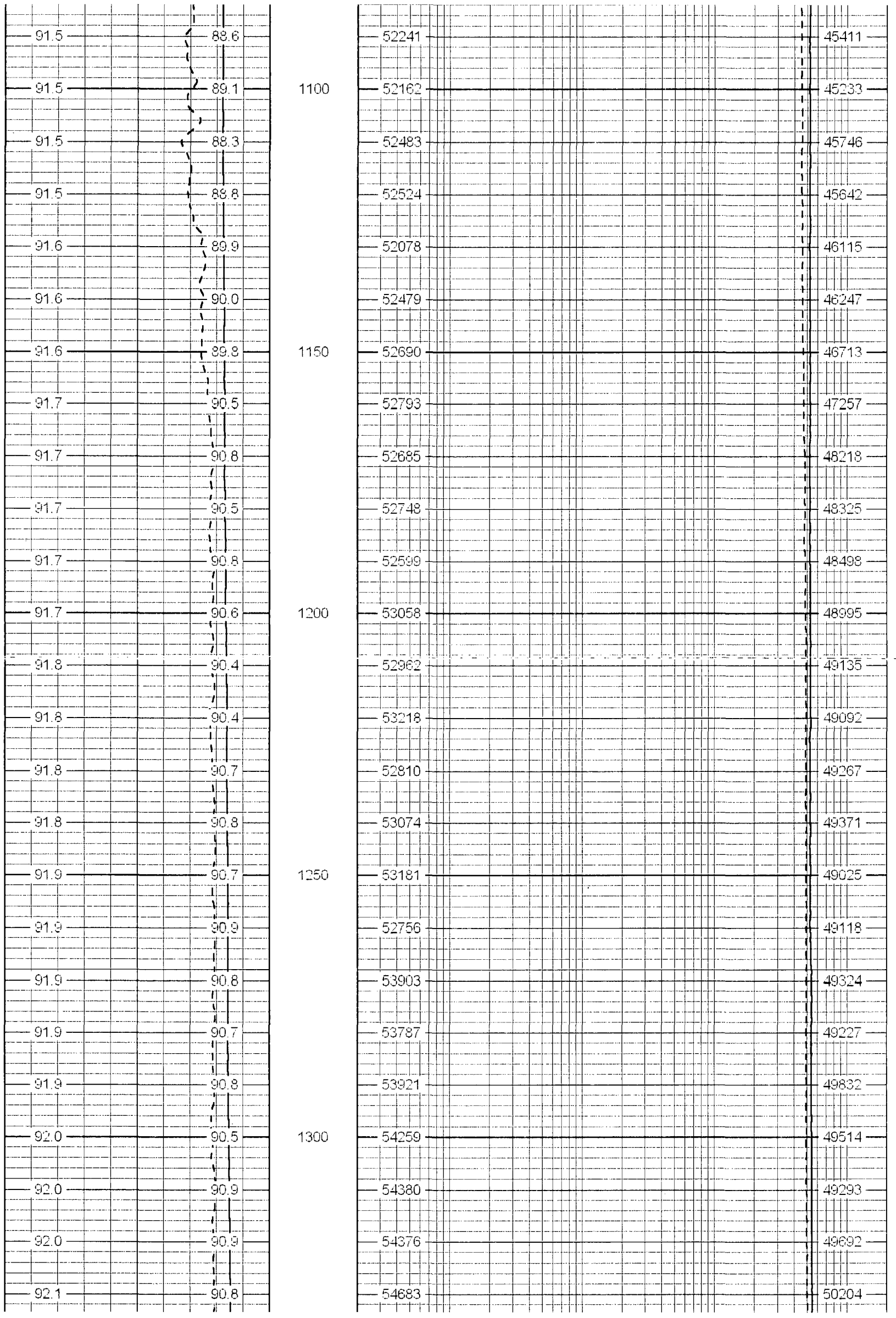
MERGED FCT

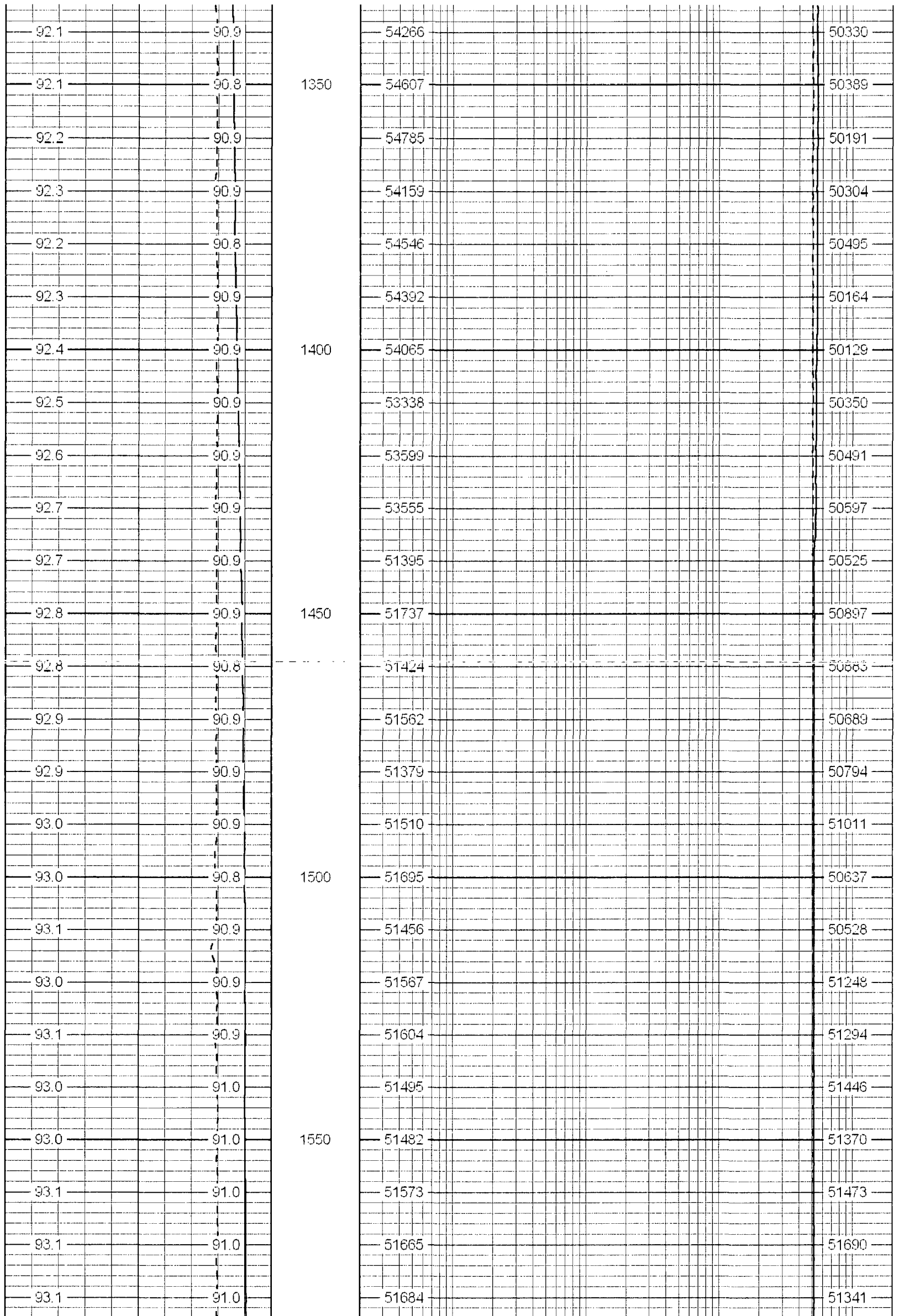
Database File: marcois.db
Dataset Pathname: run5/pass12
Presentation Format: frt_mg
Dataset Creation: Sun Aug 31 02:04:46 2008 by Log 6.2_B4
Charted by: Depth in Feet scaled 1:240

DYNAMIC TEMP (degF) 75
 STATIC TEMP (degF) 95

DYNAMIC FLUID CONDUCTIVITY (uS) 20
 STATIC FLUID CONDUCTIVITY (uS) 200000







93.2	91.0
93.2	91.0
93.2	91.0
93.2	91.0
93.3	91.0
93.2	91.0
93.3	91.0
93.3	91.0
93.3	91.0
93.3	91.0
93.3	91.0
93.3	91.0
93.3	91.0
93.3	91.0
93.3	91.0
93.2	91.0
93.2	91.0
93.2	91.1
93.2	91.0
93.2	91.0
93.2	91.0
93.2	91.0
93.2	91.0
93.2	91.0
93.2	91.0
93.2	91.0
93.2	91.0

1600

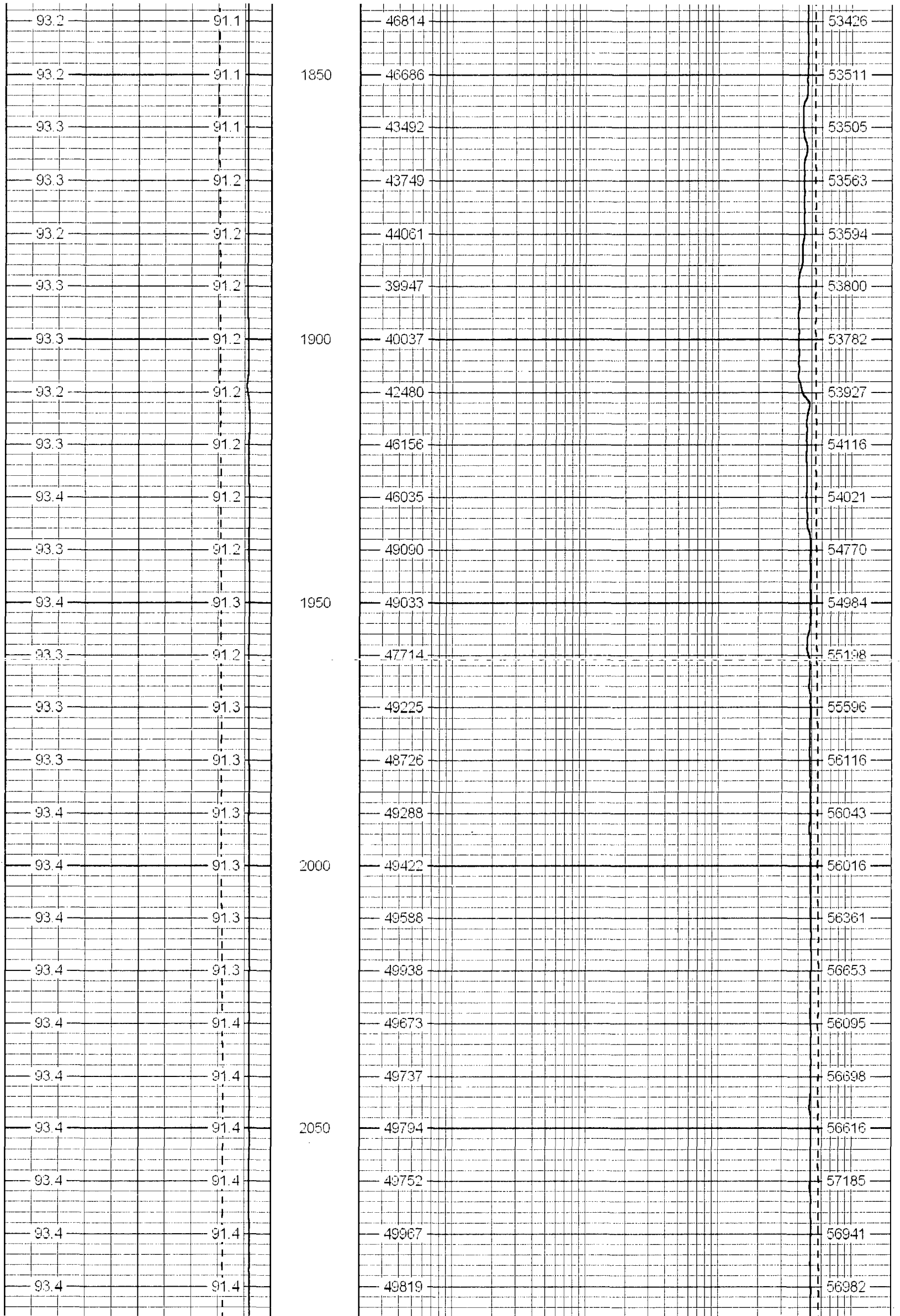
1650

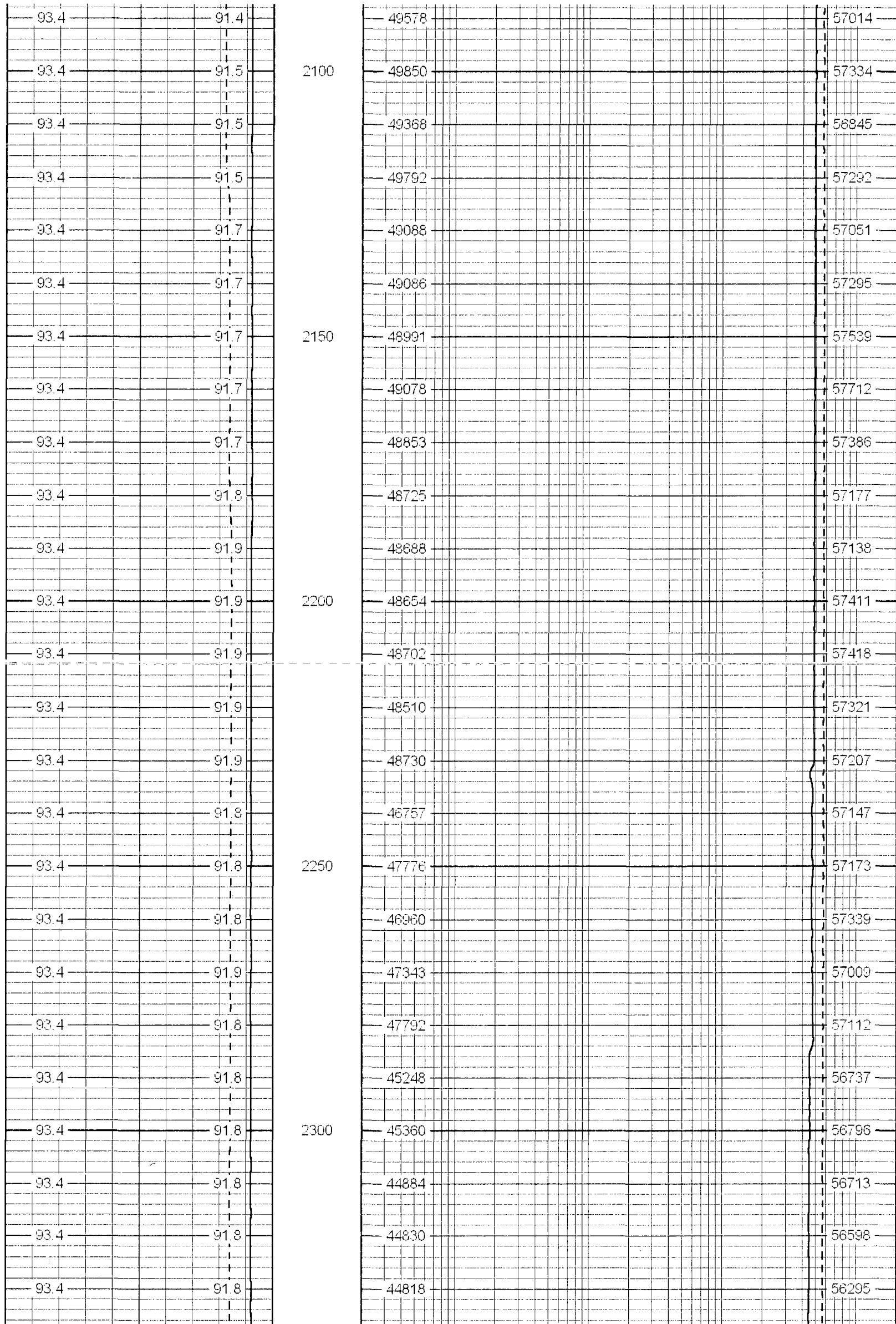
1700

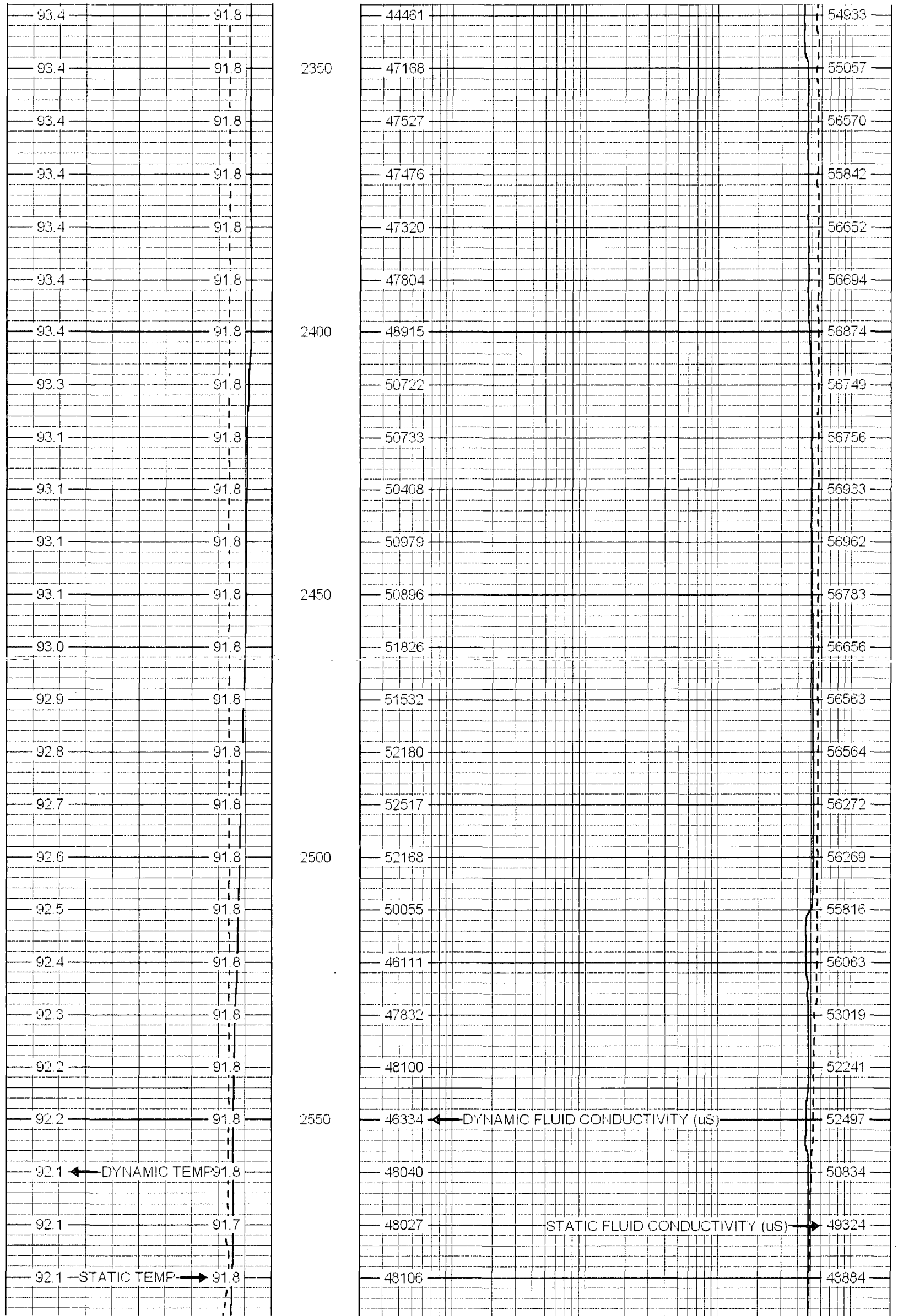
1750

1800

51641	51650
51578	51804
51634	51746
51504	52023
51506	52015
51698	52146
51330	52272
51065	52415
50427	52103
50123	52101
49763	52801
49123	52539
48789	52967
48567	53063
47063	52963
47688	53290
47668	53548
47424	53357
47876	53247
47553	53020
47816	53252
47505	53304
47579	53325
46993	53515
47199	53488







92.0			91.4	2600	47657				48046
75	DYNAMIC TEMP (degF)			95	20	DYNAMIC FLUID CONDUCTIVITY (uS)			200000
75	STATIC TEMP (degF)			95	20	STATIC FLUID CONDUCTIVITY (uS)			200000
DYNAMIC TEM (degF)				STATIC TEMP (degF)				FLUID CONDU	

Calibration Report

Database File: marcois.db
 Dataset Pathname: run5/pass1
 Dataset Creation: Sat Aug 30 19:36:12 2008 by Log 6.2_B4

Temperature Calibration Report

Serial Number: 31
 Tool Model: SONDEX
 Performed: Mon Jun 09 10:53:33 2008

Point #	Reading		Reference	
1	152.99	cps	39	degF
2	330.989	cps	82	degF
3	688.237	cps	157	degF
4		cps		degF
5		cps		degF
6		cps		degF
7		cps		degF
8		cps		degF
9		cps		degF
10		cps		degF

Sensor	Offset (ft)	Schematic	Description	Len (ft)	OD (in)	Wt (lb)
TEMP	0.70		TEMP-SONDEX (31)	1.20	1.63	10.00
FRES	0.50		FRT-SONDEX (31)	0.60	1.69	10.00

Dataset: marcois.db: field/well/run5/pass1
 Total Length: 1.80 ft
 Total Weight: 20.00 lb
 O.D. 1.69 in